

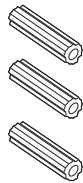
Password PIR Siren Alarm Model No: CHM0156

This product is an infrared password alarm, with the function of visitor alert and anti-theft alarm. It is designed for indoor use only.

It is very important to install and operate this product according to the following instructions.

PICTURES FOR ACCESSORIES:

- 1) Infrared Alarm 2) Wall Plugs 3) Screws 4) Rotatable Bracket 5) Instruction Manual

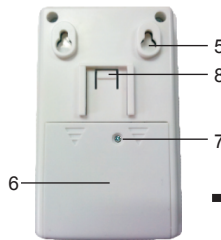


NAMES FOR PARTS

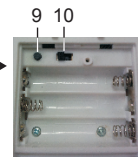
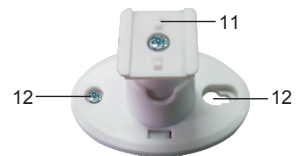
Infrared Alarm front side



Infrared Alarm back side



Infrared Alarm back side



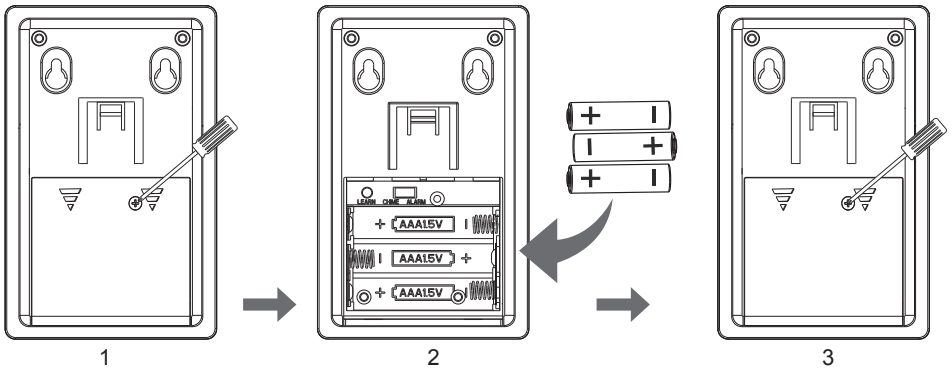
- | | |
|--------------------------------------|--|
| (1) PIR Sensor Head | (2) Speaker |
| (3) Indicator Light | (4) Password Buttons |
| (5) Hanging Holes for Infrared Alarm | (6) Battery Cover |
| (7) Fixing Screw for Battery Cover | (8) Hanging Hook |
| (9) Learn Button | (10) Slide Switch(Chime on the left, Alarm on the right) |
| (11) Rotatable Bracket Head | (12) Hanging Holes for Bracket |

NOTES BEFORE INSTALLATION

1) Before installation and operation, you will require a drill, a cross-headed screwdriver, 3×AAA 1.5V batteries. All of these are not supplied with this alarm.

INSTALLING/REPLACING BATTERIES

1. Screw off the screw on the back side of the unit by using small cross-head screwdriver, and then remove the back cover.
2. Install 3×AAA batteries according to the “+” and “-” markings. The indicator light will flash when correctly installed.
3. Replace the back cover and tighten the screw.
4. Do not mix battery types. For the best ongoing performance, we recommend using only fresh, high quality, alkaline batteries.



OPERATING GUIDE

There are two modes, door bell mode and alarm mode.

Door bell mode operation:

Open the battery cover, and move the Slide Switch to CHIME. After installing the batteries, the indicator light will be flashing and enter into the Doorbell Mode. Within the PIR detection range, it will sound with ding-dong when detecting any motion.

Alarm mode operation:

Pressing Learn Button, the unit will quickly and continuously give out four beeps. Move the Slide Switch to ALARM position on the right, then input four-digit password by pressing the password buttons. After inputting the four-digit password, the unit will give out four beeps to confirm your operation. Then, input the four-digit password again, the unit will give out two beeps, indicating the alarm has been set. At the same time, the indicator light will be flashing. (If the password is not correct, the indicator light will not flash.) The user must exit the detection zone within 45 seconds. After 45 seconds, the unit will give out a single beep, indicating the system is armed. If a motion is detected, it will activate the alarm, and the siren will sound after 30 seconds. If the user inputs the password, the unit will stop sounding, and come out of alert detecting status.

HOW DOES IT WORK?

The PIR Motion Alarm contains a passive infrared (PIR) sensor, which detects moving heat created by any other noticeably hot object moving at sufficient speed. Then it will give out chime or alarm sound to alert you to presence in the area. At the same time, the indicator light flashes.

Technical Specifications

Voltage: 3*AAA 1.5V Alkaline batteries

PIR detection approximately 120 degree up to 5 metres

Mode: Doorbell Mode; Alarm Mode

Standby current: $\leq 50\text{mA}$

The Alarm Mode

Protection password: 4 digits

Password setting limits: 15s

Alarm volume: 85dB(A)

Working current $\leq 250\text{ mA}$

Exit time from the spot: approximately 40s

Disarming & arming time: 30s

Alarm ring time: 30s

The Doorbell Mode

Ring time: 2s

Doorbell volume 85dB(A)

Working current $\leq 250\text{mA}$

WALL MOUNT

To mount the unit on the wall, you will require a drill and cross-headed screwdriver.

IMPORTANT

Before you drill any hole in the wall, please make sure there are not cables or pipes that you may accidentally damage. Additionally you have to make sure the mounting position for the Alarm is within the required operating / detecting range and at correct height. (You should test them to see if they work.)

Avoid positioning, above heat sources (e.g. radiator) or in damp areas such as a kitchen or bathroom.

Non-Aimable

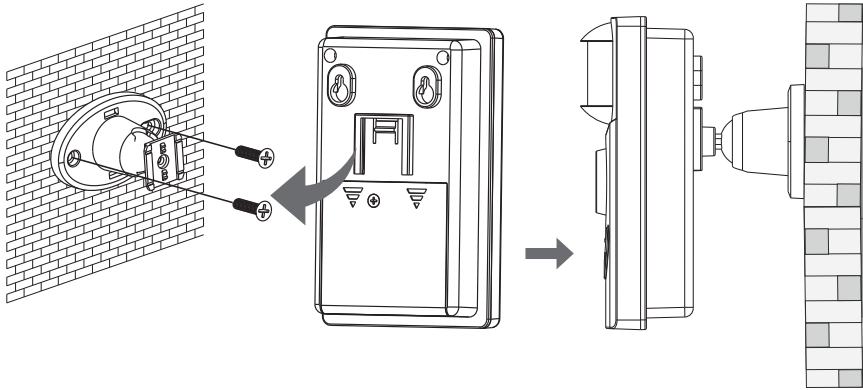
Fix the 2x screws to a solid wall at 35mm centres, leaving screwhead protruding slightly. Slot hanging holes of alarm to the screw heads

Aimable

Firmly fix the rotatable bracket to a solid wall surface using the screws supplied. Then click the alarm unit to the bracket. Sensor can now be aimed.

Note

With either mounting method, the alarm unit should be secure as vibration motion may activate the alarm.



USER HINTS

If the Alarm does not sound, please check the following:

- a) Flat batteries in Alarms - change the batteries.
- b) Wrong battery polarity in Alarms - reinsert the batteries,
- c) Unit is out of range-Operate the Alarm within the operation/detection range.

TIPS & TRICKS:

The PIR motion alarm is not infallible. In particular...

1. The sensor can't detect anything which is the same temperature as their backgrounds.
2. Any moving heat source can trigger the PIR motion alarm. For example, a moving shadow on a sunny day may trigger the alarm, or the sun coming out from behind clouds. False triggers should be rare, but will occasionally occur.
3. Animals or any other large heat source can trigger the sensor, so avoid busy pathways or sidewalks. Therefore, try to aim the alarm towards an evenly lit and heated view with a minimum of shifting lighting or moving objects. Ideally, the alarm should only see the moving object(s), person(s) you want to detect.

IMPORTANT: PLEASE KEEP THESE INSTRUCTIONS FOR FUTURE REFERENCE WHEN REPLACING BATTERIES



Distributed by: Simx Limited
Ph: +64 9 259 1660 | Technical Support Ph: +64 9 259 1662
Email: sales@simx.co.nz | www.simx.co.nz
Simx reserves the right to alter technical specifications without prior warning

PUB1335 Iss01 05/15