

Pool Fence Only

Plot Date: 13 May 2019 16:27

© 2019. The copyright of this document is the property of Glass Vice Limited and shall not be reproduced, copied, loaned or disposed of directly, or indirectly, nor used for any purpose other than that for which it is specifically furnished without prior consent.

All dimensions in millimetres



# Vertical Battens

## 1300mm High Face Fixed into Timber

Section - Face Fix 190 Double Joist 1.3M Pool Fence with 65x17mm Battens

Date: 10 April 2019

Scale: 1 : 10

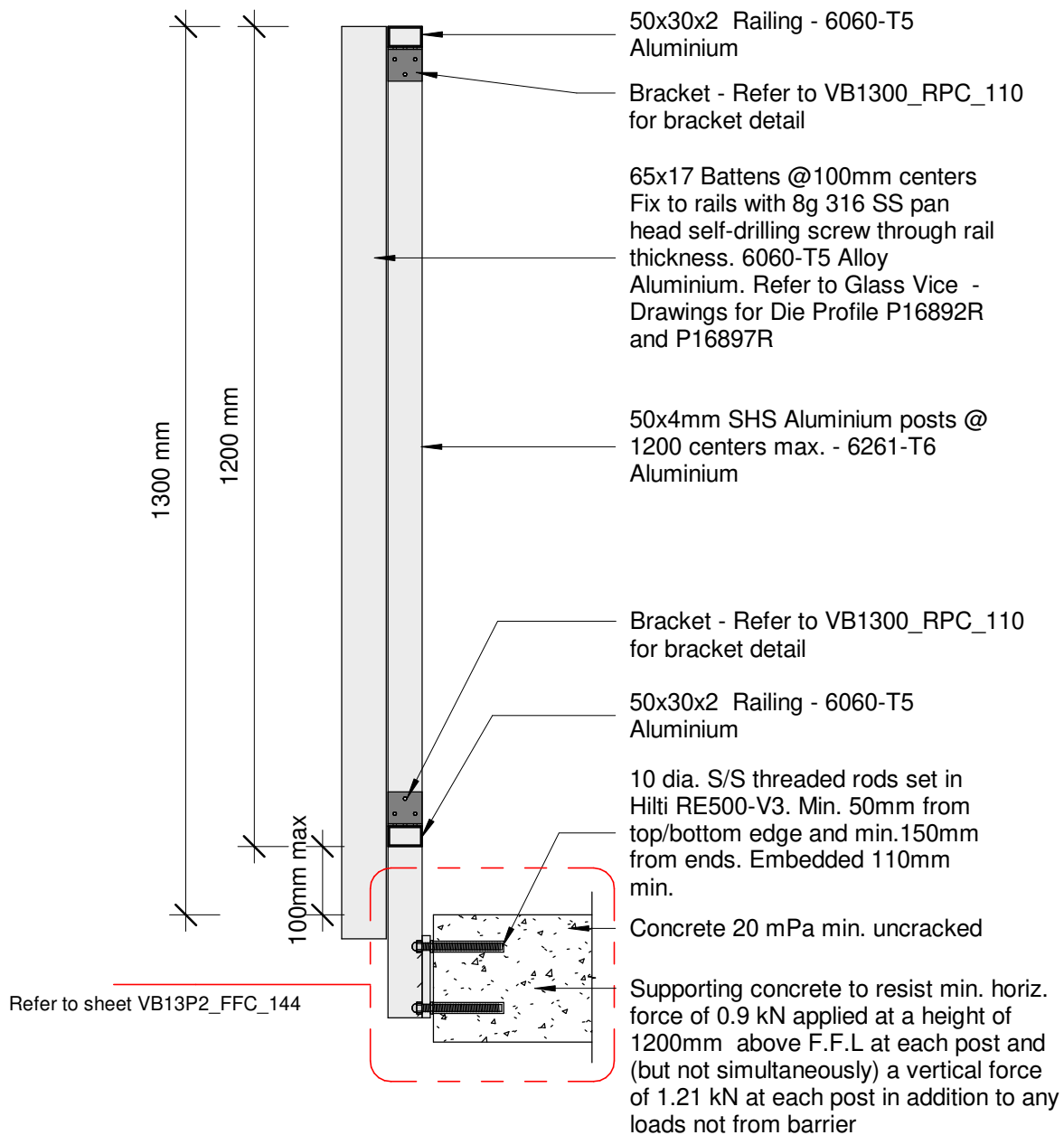
Issue 01

www.glassvice.com

Phone +64 9 414 6565

info@glassvice.com

VB13P2\_145



Pool Fence Only

Plot Date: 13 May 2019 16:27

© 2019. The copyright of this document is the property of Glass Vice Limited and shall not be reproduced, copied, loaned or disposed of directly, or indirectly, nor used for any purpose other than that for which it is specifically furnished without prior consent.

All dimensions in millimetres



## Vertical Battens

1300mm High Face Fixed into Concrete

Section - Face Fix Concrete 1.3M Pool Fence with 65x17mm Battens

Date: 10 April 2019

Scale: 1 : 10

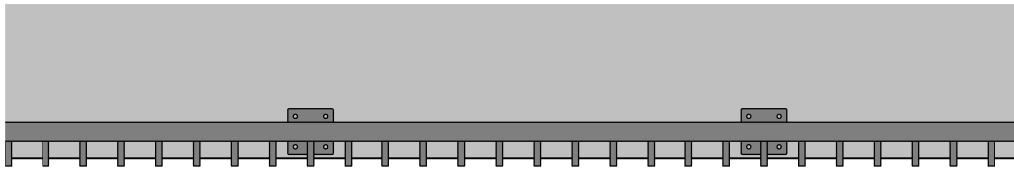
Issue 01

www.glassvice.com

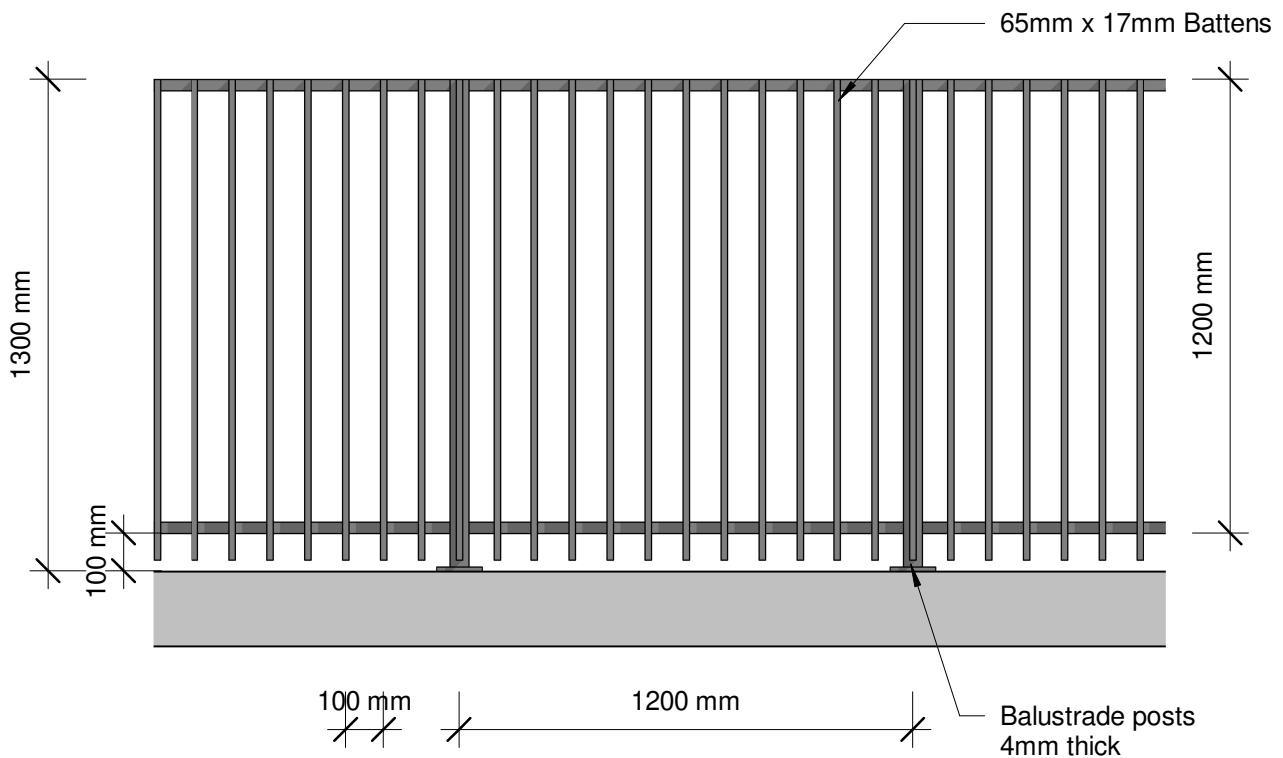
Phone +64 9 414 6565

info@glassvice.com

VB13P2\_146



Plan



Elevation

Not suitable where fall height is 1M or more

Pool Fence Only

Plot Date: 13 May 2019 16:27

© 2019. The copyright of this document is the property of Glass Vice Limited and shall not be reproduced, copied, loaned or disposed of directly, or indirectly, nor used for any purpose other than that for which it is specifically furnished without prior consent.

All dimensions in millimetres



# Vertical Battens 1300mm High Top Fixed

Elevation - Top Fix 1.3M Pool Fence Only - 65x17mm Battens

Date: 10 April 2019

Scale: 1 : 20

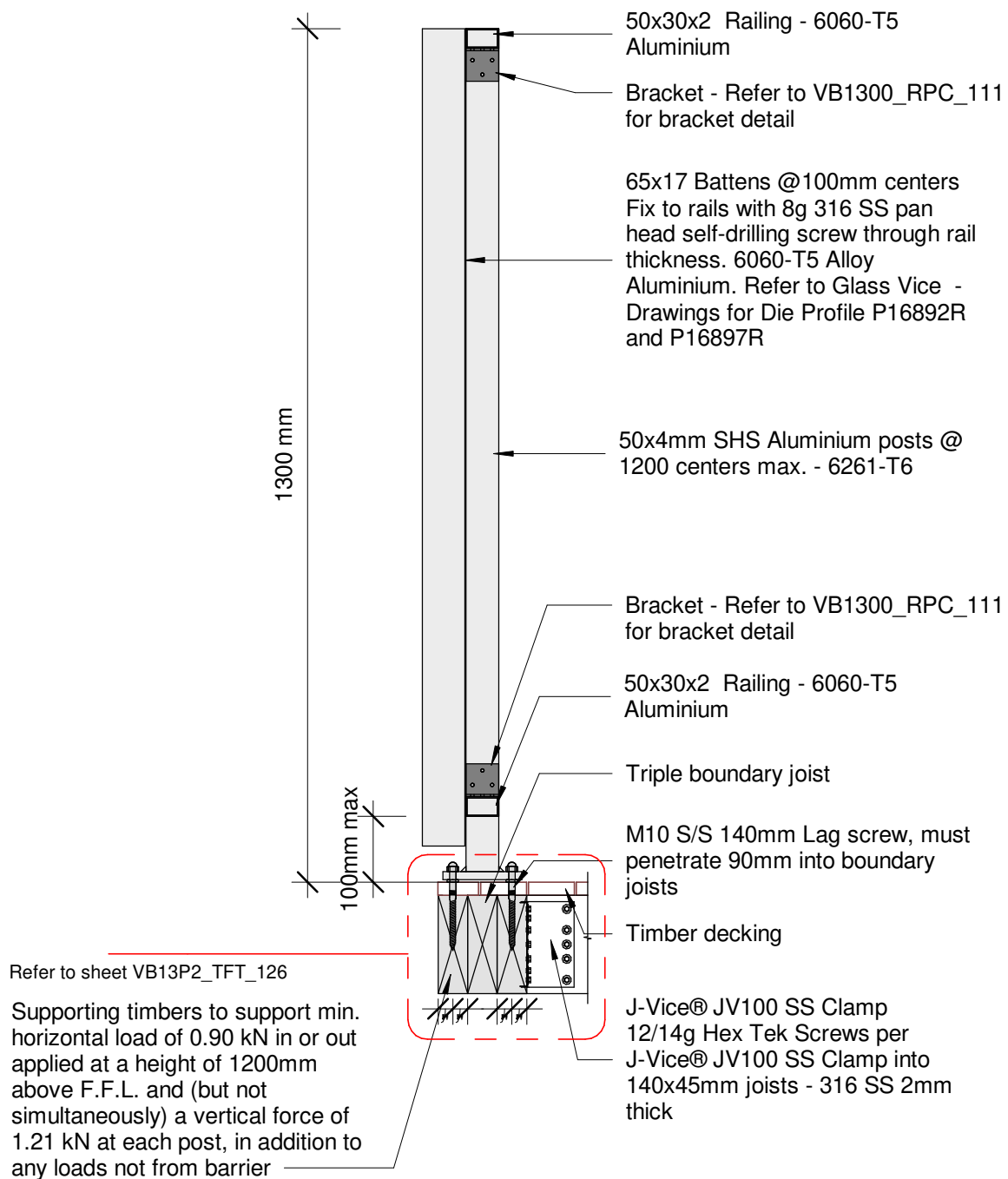
Issue 01

www.glassvice.com

Phone +64 9 414 6565

info@glassvice.com

VB13P2\_320



Pool Fence Only

Plot Date: 13 May 2019 16:27

© 2019. The copyright of this document is the property of Glass Vice Limited and shall not be reproduced, copied, loaned or disposed of directly, or indirectly, nor used for any purpose other than that for which it is specifically furnished without prior consent.

All dimensions in millimetres



## Vertical Battens

1300mm High Face Fixed into Timber

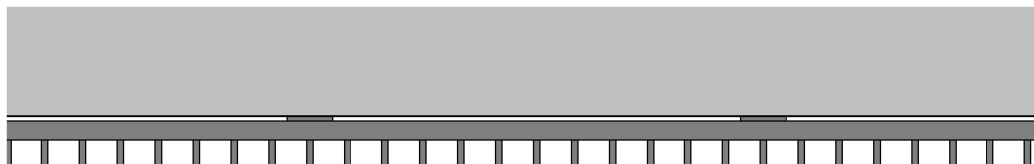
Section - Top Fix 140 Triple Joist Pool Fence with 65x17mm Battens

Date: 10 April 2019  
Scale: 1 : 10

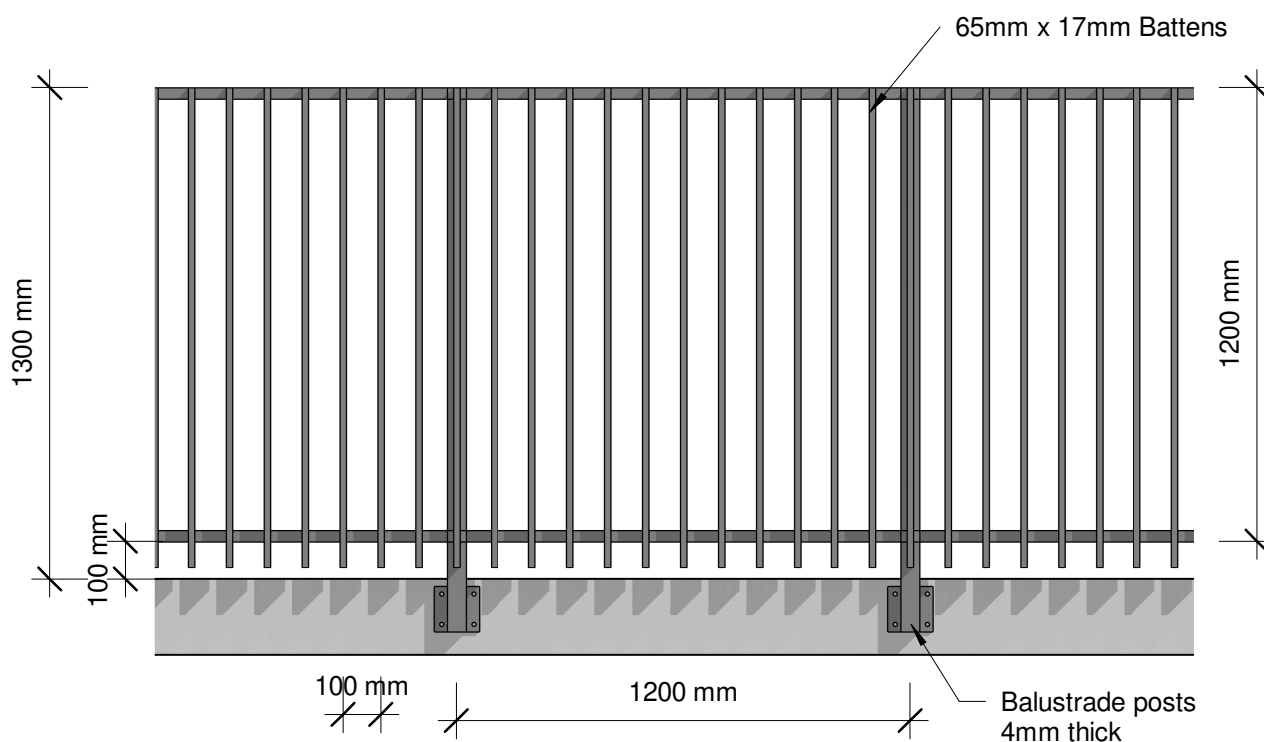
Issue 01

www.glassvice.com  
Phone +64 9 414 6565  
info@glassvice.com

VB13P2\_330



Plan



Elevation

Pool Fence Only

Plot Date: 13 May 2019 16:27

© 2019. The copyright of this document is the property of Glass Vice Limited and shall not be reproduced, copied, loaned or disposed of directly, or indirectly, nor used for any purpose other than that for which it is specifically furnished without prior consent.

All dimensions in millimetres



# Vertical Battens

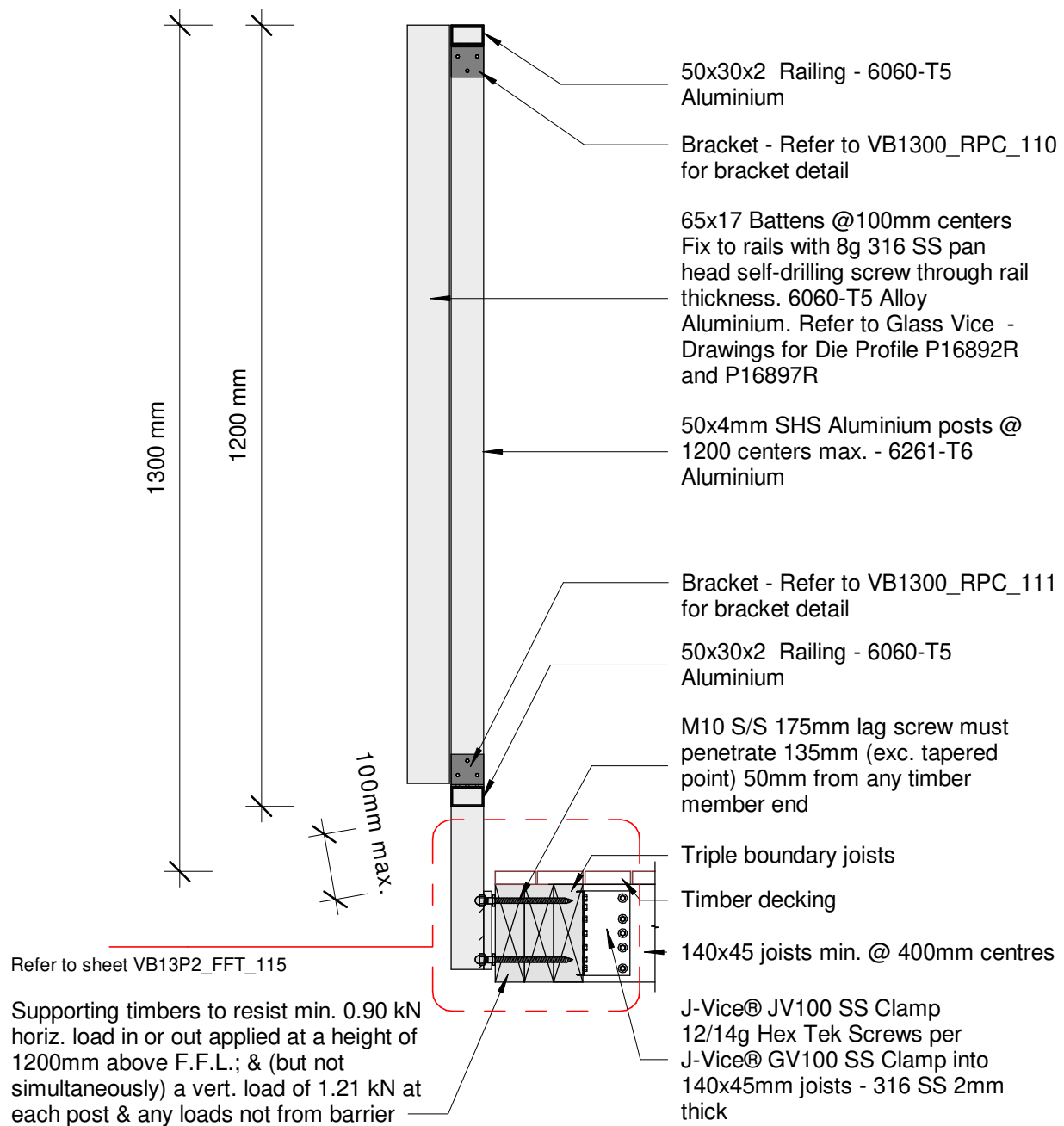
## 1300mm High Top Fixed

Elevation - Face Fix 1.3M Pool Fence with 65x17mm Battens

Date: 10 April 2019  
Scale: 1 : 20  
Issue 01

www.glassvice.com  
Phone +64 9 414 6565  
info@glassvice.com

VB13P2\_340



Pool Fence Only

Plot Date: 13 May 2019 16:27

© 2019. The copyright of this document is the property of Glass Vice Limited and shall not be reproduced, copied, loaned or disposed of directly, or indirectly, nor used for any purpose other than that for which it is specifically furnished without prior consent.

All dimensions in millimetres



# Vertical Battens 1300mm High Top Fixed into Timber

Section - Face Fix 140 Triple Joist 1.3M Pool Fence with 65x17mm Battens

Date: 10 April 2019

Scale: 1 : 10

Issue 01

www.glassvice.com

Phone +64 9 414 6565

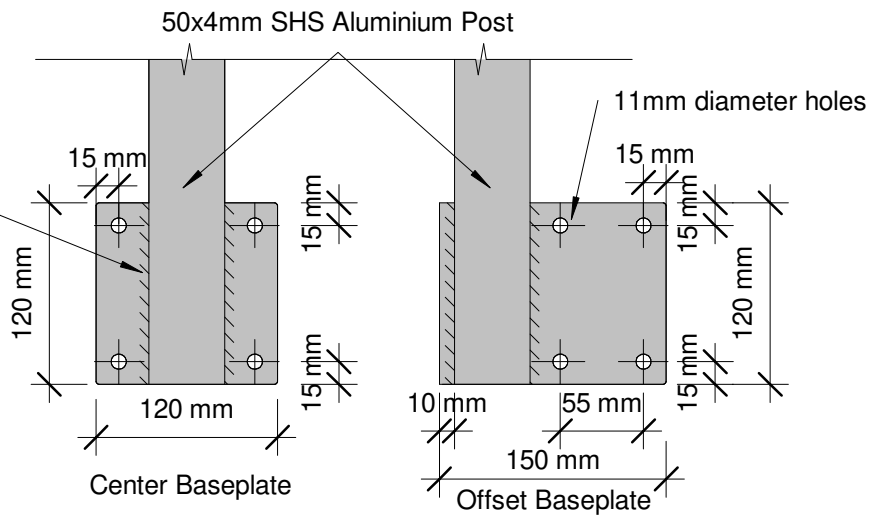
info@glassvice.com

VB13P2\_350

12mm Baseplate - 5083-H321,  
H116 Alloy Aluminium 120mm long  
6mm fillet weld (leg size, equal)  
each side of post with 5356 alloy

**Note:**

Supporting concrete to resist min. horiz.  
force of 0.90 kN applied at a height of  
1200mm above F.F.L at each post and  
(but not simultaneously) a vertical force  
of 1.21 kN at each post in addition to any  
loads not from barrier



50x4mm SHS Aluminium posts @  
1200 centers max. - 6261-T6  
Aluminium

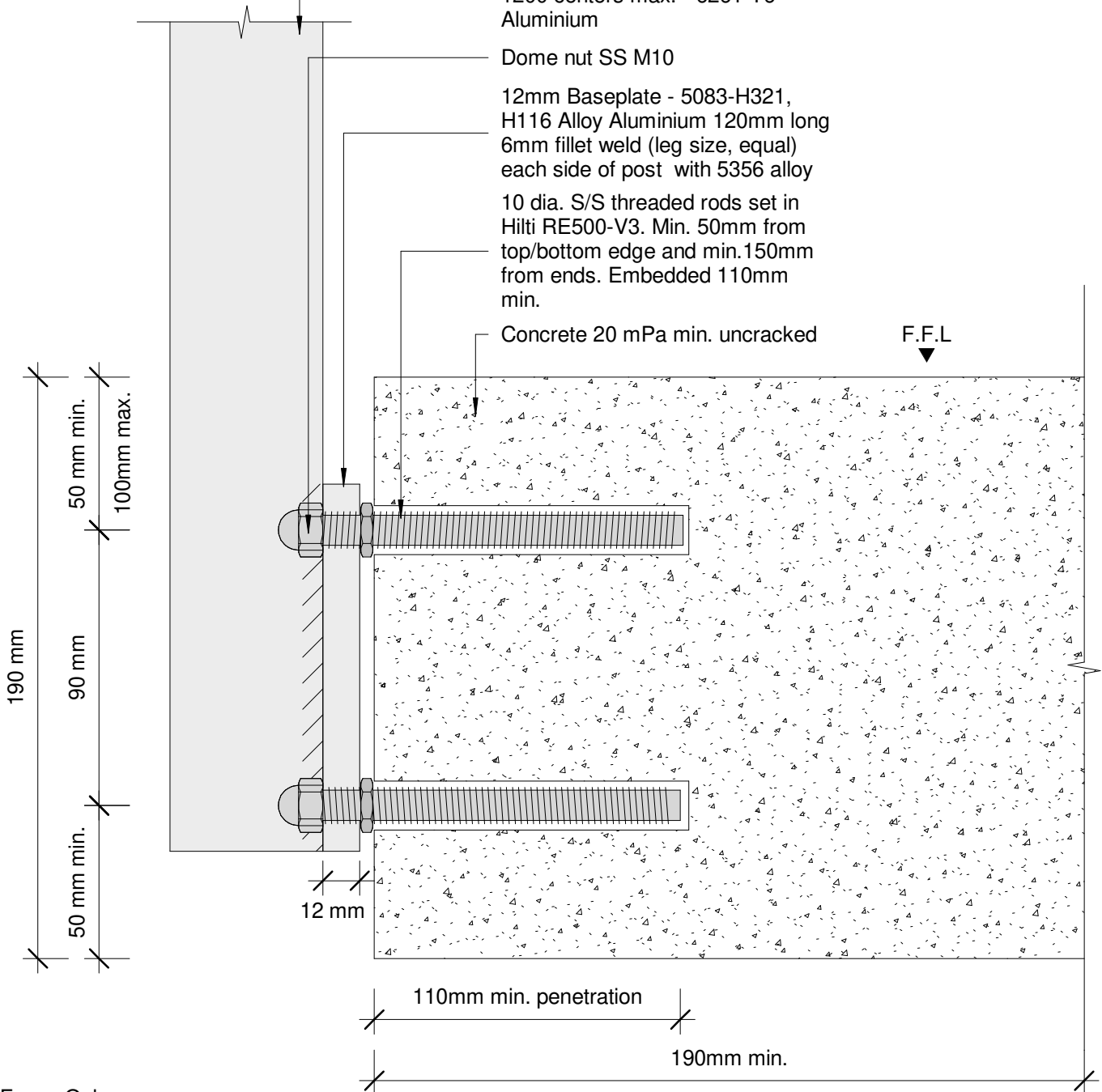
Dome nut SS M10

12mm Baseplate - 5083-H321,  
H116 Alloy Aluminium 120mm long  
6mm fillet weld (leg size, equal)  
each side of post with 5356 alloy

10 dia. S/S threaded rods set in  
Hilti RE500-V3. Min. 50mm from  
top/bottom edge and min. 150mm  
from ends. Embedded 110mm  
min.

Concrete 20 mPa min. uncracked

F.F.L



Pool Fence Only

Plot Date: 13 May 2019 16:27

© 2019. The copyright of this document is the property of Glass Vice Limited and shall not be reproduced, copied, loaned or disposed of directly, or indirectly, nor used for any purpose other than that for which it is specifically furnished without prior consent.

All dimensions in millimetres



## Vertical Battens

1300mm High Face Fixed into Concrete

Detail - Face Fix Concrete 1.3M Pool Fence with 65x17mm Battens

Date: 10 April 2019

Scale: As indicated

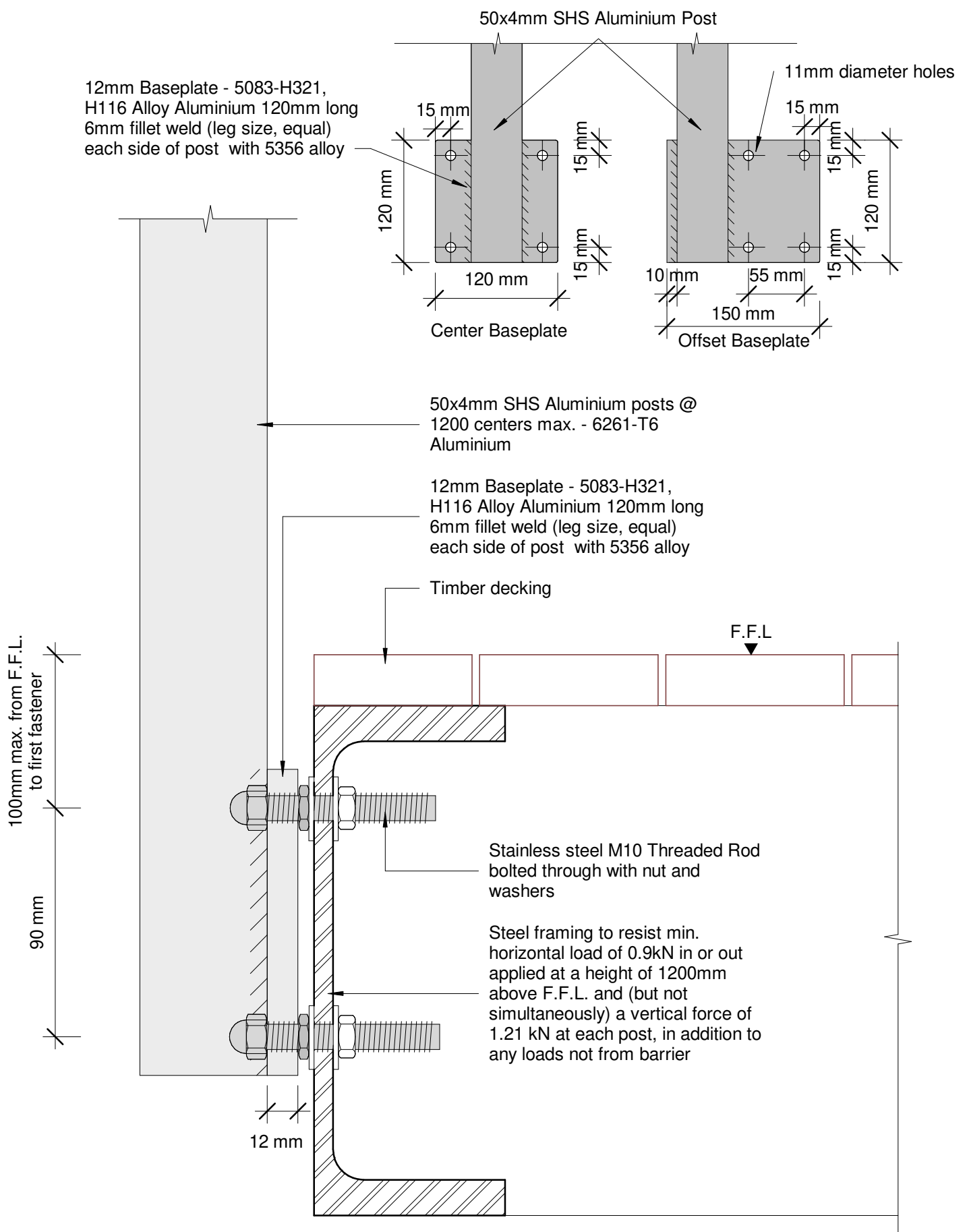
Issue 01

www.glassvice.com

Phone +64 9 414 6565

info@glassvice.com

VB13P2\_FFC\_144



Pool Fence Only

Plot Date: 13 May 2019 16:27

© 2019. The copyright of this document is the property of Glass Vice Limited and shall not be reproduced, copied, loaned or disposed of directly, or indirectly, nor used for any purpose other than that for which it is specifically furnished without prior consent.

All dimensions in millimetres



## Vertical Battens

1300mm High Face Fixed into Steel Beam

Detail - Face Fix Steel Beam 1.3M Pool Fence with 65x17mm Battens

Date: 10 April 2019  
Scale: As indicated

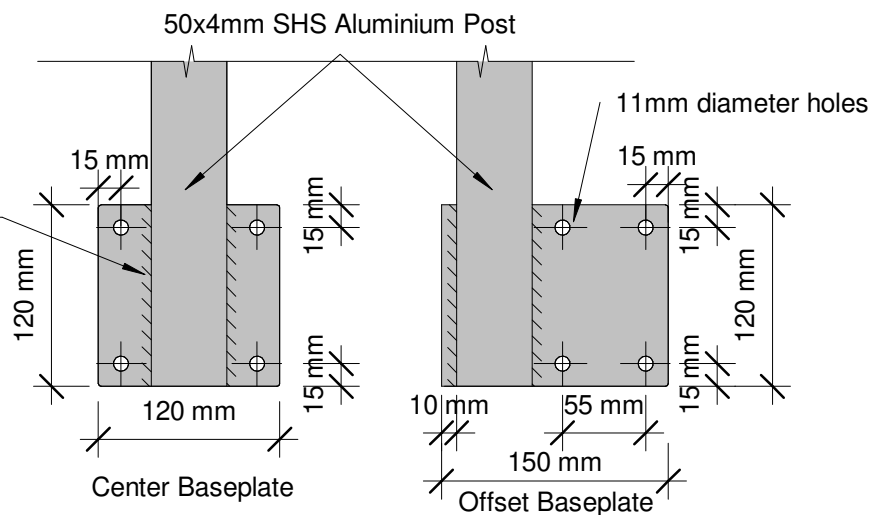
www.glassvice.com  
Phone +64 9 414 6565  
info@glassvice.com

Issue 01

VB13P2\_FFS\_115



12mm Baseplate - 5083-H321,  
H116 Alloy Aluminium 120mm long  
6mm fillet weld (leg size, equal)  
each side of post with 5356 alloy



50x4mm SHS Aluminium posts @  
1200 centers max. - 6261-T6  
Aluminium

Dome nut SS M10

12mm Baseplate - 5083-H321,  
H116 Alloy Aluminium 120mm long  
6mm fillet weld (leg size, equal)  
each side of post with 5356 alloy

M10 S/S 140mm lag screw must  
penetrate 90mm (exc. tapered  
point) 50mm from any timber  
member end

Timber decking

Triple boundary joist

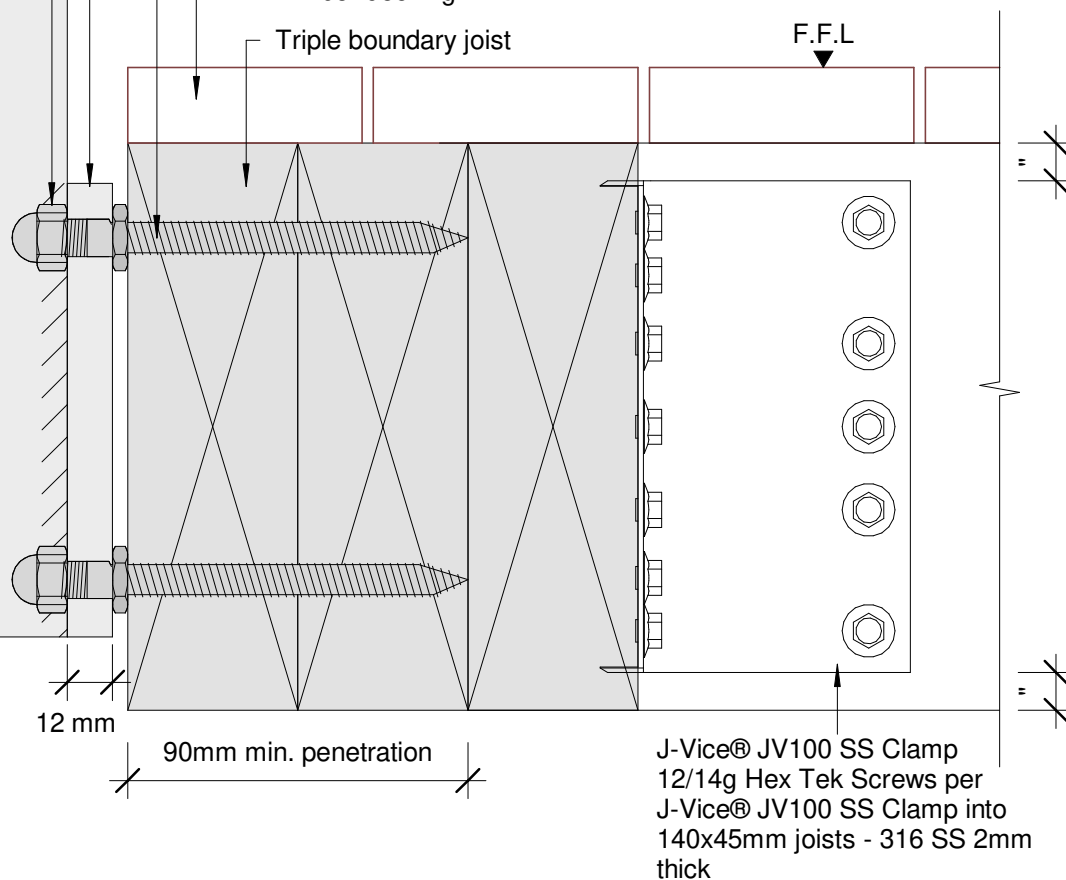
F.F.L

100mm max from F.F.L.  
to first fastener

25mm min.

90 mm

25mm min.



Pool Fence Only

Plot Date: 13 May 2019 16:27

© 2019. The copyright of this document is the property of Glass Vice Limited and shall not be reproduced, copied, loaned or disposed of directly, or indirectly, nor used for any purpose other than that for which it is specifically furnished without prior consent.

All dimensions in millimetres



## Vertical Battens

1300mm High Face Fixed into Timber

Detail - Face Fix 140 Triple Joist 1.3M Pool Fence with 65x17mm Battens

Date: 10 April 2019

Scale: As indicated

Issue 01

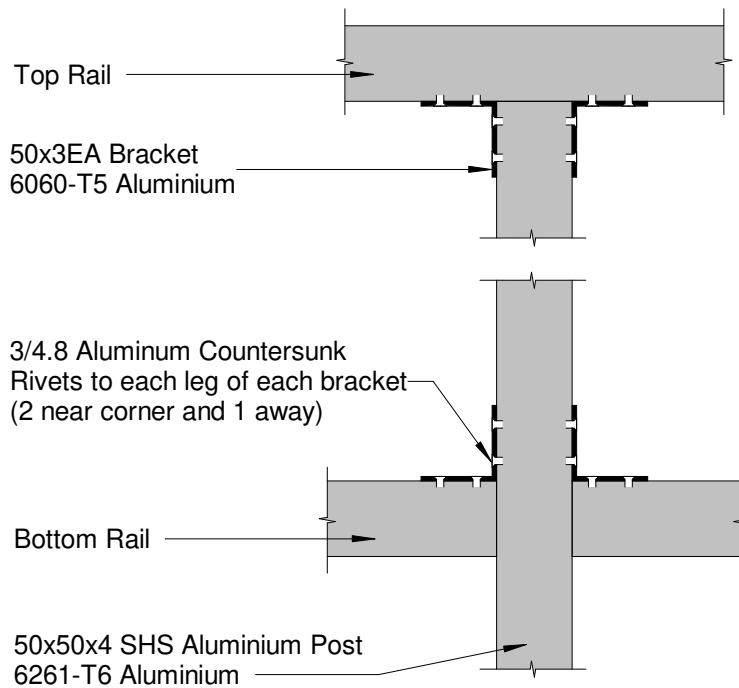
www.glassvice.com

Phone +64 9 414 6565

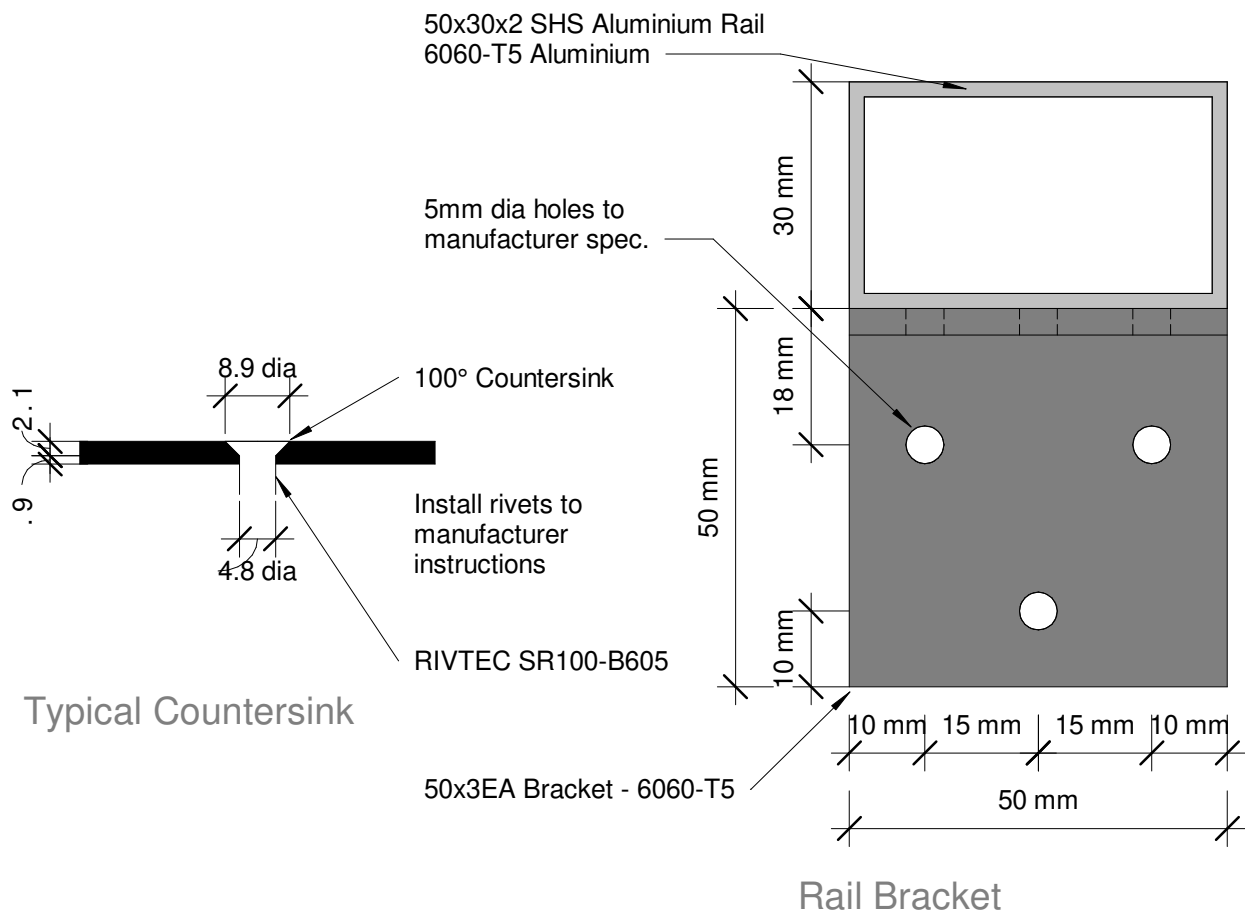
info@glassvice.com

VB13P2\_FFT\_115





## Rail - Post Connection



Plot Date: 13 May 2019 16:27

© 2019. The copyright of this document is the property of Glass Vice Limited and shall not be reproduced, copied, loaned or disposed of directly, or indirectly, nor used for any purpose other than that for which it is specifically furnished without prior consent.

All dimensions in millimetres

GLASS  
VICE

## Vertical Battens

Top/Side Fix 1300 Pool Fence - 65x17 Battens

Detail - Rail - Post Connection

Date: 10 April 2019

Scale: As indicated

Issue 01

www.glassvice.com

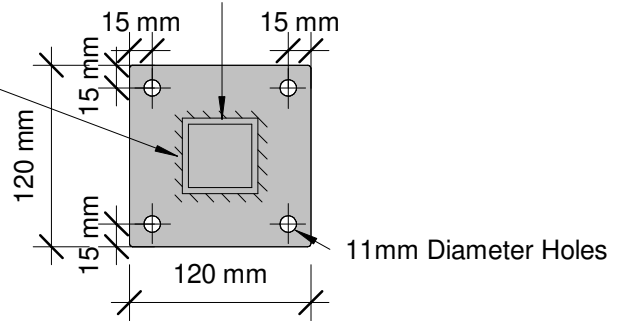
Phone +64 9 414 6565

info@glassvice.com

VB13P2\_RPC\_111

12mm Plate - 5083, H321, H116  
Alloy Aluminium. 8mm F.W.A.R.  
5356 Filler Alloy weld

50x50x4mm SHS Aluminium Post



Note:  
Supporting concrete to  
resist min. horiz. force of  
0.9 kN applied at a height of  
1200mm above F.F.L at  
each post and (but not  
simultaneously) a vertical  
force of 1.21 kN at each  
post in addition to any loads  
not from barrier

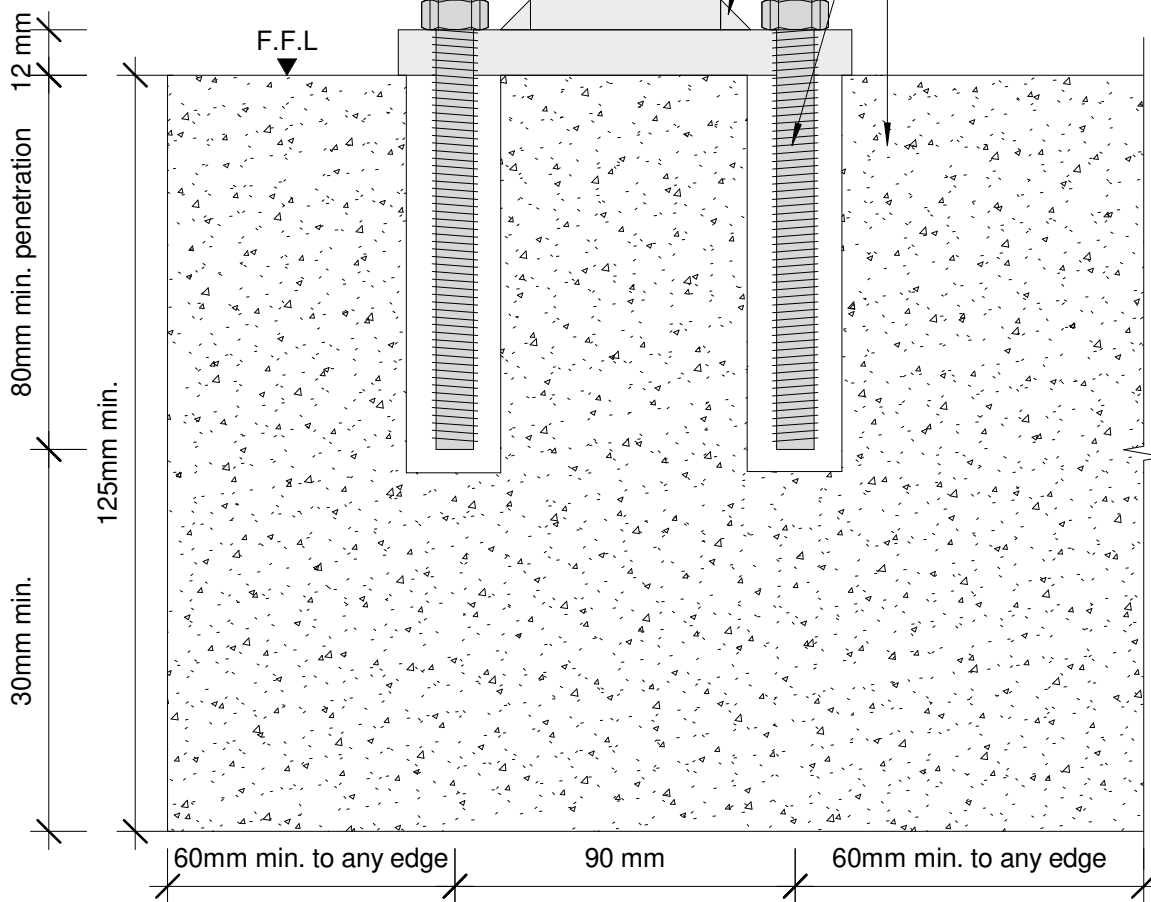
50x4mm SHS Aluminium posts @  
1200 centers max. - 6261-T6

12mm Plate - 5083, H321, H116  
Alloy Aluminium. 8mm F.W.A.R.  
5356 Filler Alloy weld

Dome nut

10 dia. S/S Threaded Rods set in  
Hilti RE500

Concrete 20 mPa min. uncracked



Pool Fence Only

Plot Date: 13 May 2019 16:27

© 2019. The copyright of this document is the property of Glass Vice Limited and shall not be reproduced, copied, loaned or disposed of directly, or indirectly, nor used for any purpose other than that for which it is specifically furnished without prior consent.

All dimensions in millimetres



# Vertical Battens

## 1300mm High Top Fix into Concrete

Detail - Top Fix Concrete 1.3M Pool Fence with 65x17mm Battens

Date: 10 April 2019

Scale: As indicated

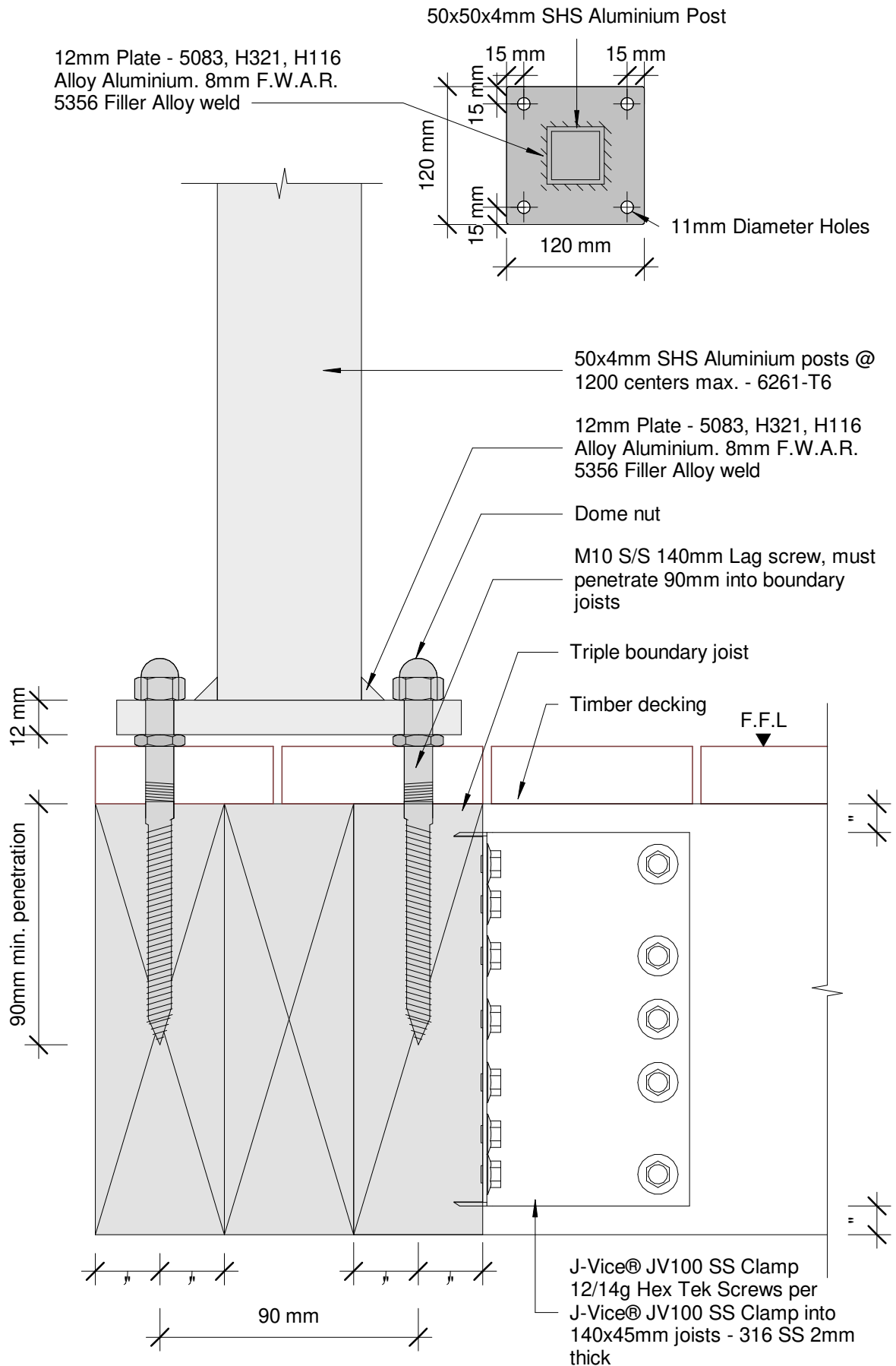
Issue 01

www.glassvice.com

Phone +64 9 414 6565

info@glassvice.com

VB13P2\_TFC\_252



Pool Fence Only

Plot Date: 13 May 2019 16:27

© 2019. The copyright of this document is the property of Glass Vice Limited and shall not be reproduced, copied, loaned or disposed of directly, or indirectly, nor used for any purpose other than that for which it is specifically furnished without prior consent.

All dimensions in millimetres



# Vertical Battens

## 1300mm High top Fix into Timber

Detail - Top Fix 140 Triple Joist 1.3M Pool Fence with 65x17mm Battens

Date: 10 April 2019  
Scale: As indicated  
Issue 01

www.glassvice.com  
Phone +64 9 414 6565  
info@glassvice.com

VB13P2\_TFT\_126