



# QWICKBUILD®

MODULAR FRAMING AND SUPPORT SYSTEM  
/// DECKING + TILES + TURF

QwickBuild is an external flooring system that provides strong, durable, stable structures to support decking boards, tiles, turf or a combination of these surfaces. QwickBuild is designed for installations over waterproof membranes, concrete or natural ground scenarios.

/// **OUTDURE®**

# QWICKBUILD®

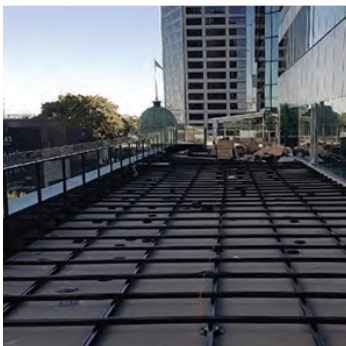
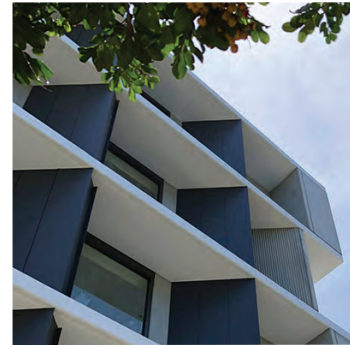
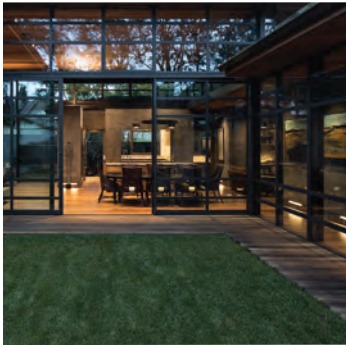


## MODULAR SUB-STRUCTURE SYSTEM FOR RESIDENTIAL & COMMERCIAL SPACES

QwickBuild is the only system that provides a low height, level and stable solution for supporting decking, tiles, turf or a combination. Designed as a low risk, floating floor system for installations over waterproof membranes. QwickBuild is also ideal as a sub-frame over concrete, pavers or natural ground.

The complete proprietary system comprises of a comprehensive range of patented profiles and accessories for all residential and commercial scenarios. Designed for durability, the frames with a load capacity of up to 5kN point load are manufactured from structural aluminium, making them extremely light-weight. Accessories include access and ventilation grilles, adjustable height pedestals, brackets and QwickClip hidden fastenings.

The long-span frames result in fewer footings, significantly reducing installation time on site, therefore making QwickBuild a cost-effective solution. The system also enables the construction of deck structures with flush internal and external floor levels that are of complexity, including: stairs, seats, screens and curves. Particularly effective for rooftop spaces and apartment balconies due to the low height capabilities.



# SYSTEM COMPONENTS

The QwickBuild system consists of all proprietary components designed for maximum durability.

## FRAMEWORK

Comprehensive range of patented joists and bearers available in commercial and residential profiles.

Made from lightweight 6063-T6 structural aluminium with marine-grade anodized / powder coated / electrophoresis 304 stainless steel.

## ACCESSORIES

Complete range including patented fasteners, brackets and screws 304 stainless steel / polypropylene

## QWICKGRATES

138x23x2800mm  
6063-T6 structural aluminium  
Silver / Black Finish

The grilles sit level with the surface materials on top of the framework. A solution for critical ventilation and access underneath the structure.

## TURF BASEBOARDS

Install onto joists to structurally support synthetic turf.

6063-T6 structural aluminium  
Silver / Black Finish

## DECK JACKS

Range of self-leveling pedestals for low height applications.

*Pictured are recent QwickBuild projects.  
For more inspiration and casestudies:*

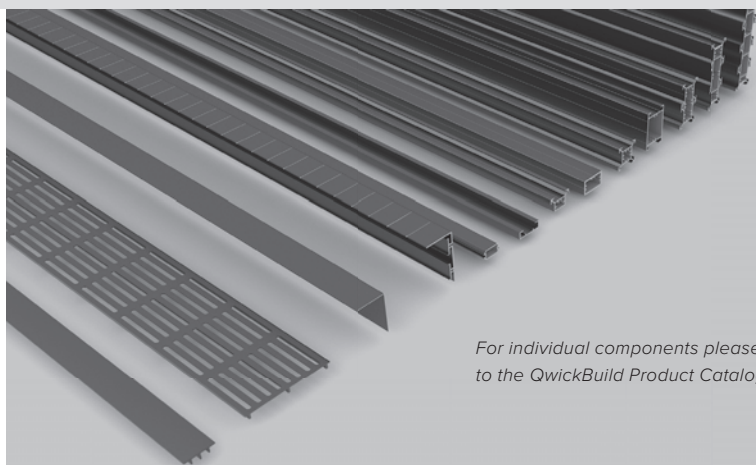


[outdure.com/projects](https://www.outdure.com/projects)  
[@outdureliving](https://www.instagram.com/outdureliving)



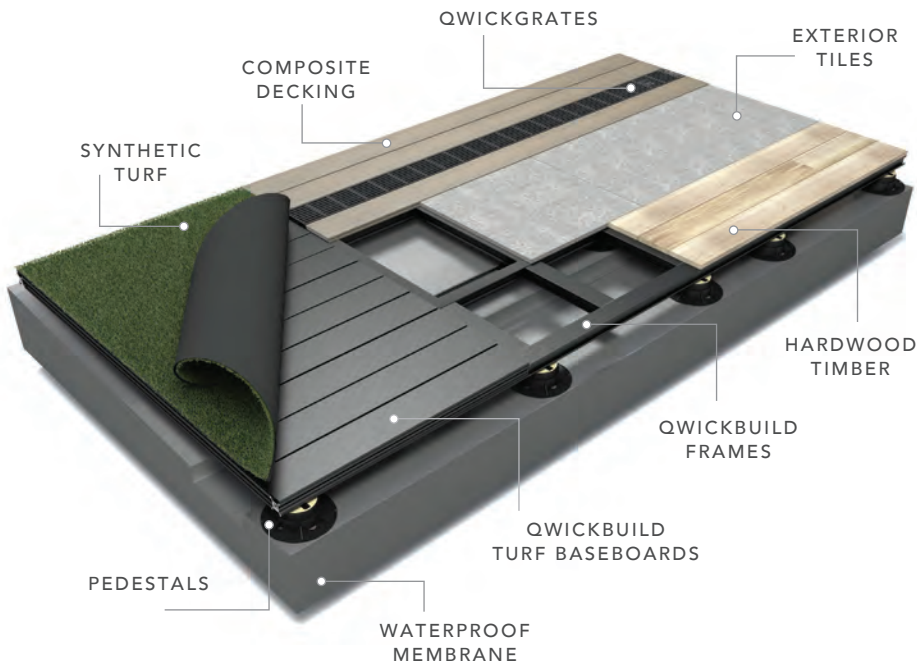
## KEY BENEFITS

- Compliant, low-risk solution: The framework is designed to 'float' on a waterproof membrane without penetrating it
- Durable and light-weight: Made from moisture-resistant materials
- Versatile: Can design with infinite configurations to accommodate various heights and engineering requirements
- Multi-surface integration: Select from Outdure's range of decking, structural exterior tiles, turf or preferred surfaces
- Low-height, long-span capabilities
- Engineered solution: Residential and commercial applications  
Load capacity of up to 5kN point load and 5kPa UDL
- One complete system: For the structure, surfaces and fastenings reducing the number of trades required on a project
- Cost-effective: Fast to install with interlocking components
- Stable and level: A substantial reduction in the number of deck jack pedestals or posts required
- Access solution: Add QwickGrates as a convenient solution for critical ventilation and access to drains and services under the surface
- Enables flush levels: Between interior and exterior floor surfaces
- Easy supply/install options:
  - Loose components / Off The Shelf (OTS)
  - Kit-set / Cut To Size (CTS)
  - Made To Adjust - Prefabricated Frames (MTA)
  - Made To Measure - Pre-fabricated Modular Frames (MTM)



*For individual components please refer to the QwickBuild Product Catalogue*

# QWICKBUILD®



## SURFACE RANGES

### RESORTDECK

Premium capped composite  
With UltraShield technology

### CASADECK

Recycled composite  
For relaxed outdoor living

### MINERAL TILES

Structural porcelain tiles  
Modern and easy care

### STONE INSPIRE

Structural porcelain tiles  
Classic style and durability

### ULTRAPLUSH TURF

Durable synthetic turf  
Soft, strong and easy care

## INSTALL PRODUCTS

### QWICKBUILD

Structural support system  
For decking, tiles and turf

### DECKJACKS

Height-adjustable pods  
Pedestal solution for tiles

### QWICKCLIP RANGE

Patented hidden fasteners for  
deck/ tile /turf installations

### QWICKGRATES

Stylish solution for ventilation  
and membrane access

### QWICKSCREEN

Vertical/horizontal designs  
for privacy and shade

### QWICKMIX

Structural polymer  
concrete alternative

Please note: Outdure International Ltd prides itself on constant product development and improvement. From time to time, Outdure's products and services will change to reflect such development. Accordingly, photos, drawings, and product dimensions may not always be accurately represented in brochure material or on our website. In addition material, colours and textures on our brochures and website are representations only. Printing and computer screens only show an approximation. Where possible, customers should choose colours from actual samples available by request from [www.outdure.com](http://www.outdure.com) or at your local Outdure office or an authorised reseller. Colour tones, shades and surface textures may vary within a product range and or between manufacturing batches. Before purchasing any product you should check with your Outdure representative as to the current design, dimension and exact colour of any product. Outdure endeavor to supply materials as per the defined dimensions but acceptable tolerances of 1-2mm difference can occasionally happen. © 2018 Outdure International Ltd. All Rights Reserved.

AUS **1800 722 465**  
NZ **0800 77 88 77**  
UK **01254 825 594**  
HK **3018 4830**  
USA **1800 986 9204**



[outdure.com](http://outdure.com)  
[@outdureliving](https://www.instagram.com/outdureliving)

