

Ulti Roll Entry

COMPACT SPEED DOOR FOR INTERIOR SPACES



The Ulti Roll Entry is a compact high-speed door, that is low maintenance, customisable, simple to use, and designed to replace traditional pedestrian hinged and sliding doors.

Space Saving

The ultra compact design of the Ulti Roll Entry with integrated motor and control panel, and small head and side frames, uses significantly less floor area and wall space making it a smart choice for narrow spaces, hallways, or doorways where traditional hinged and sliding doors have been used in the past

Low Maintenance

Auto-refeed slots allow the door to continue operating even if impacted, meaning less maintenance, less downtime, and reduced costs. Integrated motor and controls also helps avoid dust build-up, thus further reducing the maintenance and increasing the long-term durability of the door. The Brushless DC Motor also reduces wear and corrosion and has excellent durability.

Ideal for use in

- Offices
- Hallways
- Sanitary Facilities
- Hospital & Welfare Facilities
- Cafes & Restaurants
- Restrooms

Quiet

A Brushless DC motor ensures that the Ulti Roll Entry is a very quiet operating door, perfect for the low-noise environments required for office applications and hallways.

Easy Activation

With a simple, one-touch control button, the Ulti Roll Entry is easy and convenient to use. In addition, an optional contactless activation can be applied helping to eliminate the transfer of bacteria on traditional door handles for ultimate hygienic and sanitary operation.

Customisable

With custom printing, the Ulti Roll Entry is customisable to suit your needs from designating areas within your facility, to promoting your brand. Should you need to relocate the door or change the curtain design, it is also simple to move the whole unit or simply replace the curtain for reduced downtime and costs.



STANDARD COMPLIANCE

Wind Loading	Not Tested	Safe Openings	Yes
Pressure Differential	Up to 5Pa		

TECHNICAL SPECIFICATIONS

Application	Internal only
Standard Size	2000mm H x 1000mm W
Minimum Size	600mm H x 600mm W
Maximum Size	2200mm H x 1200mm W
Opening Speed	1.3m/s - variable
Closing Speed	0.65m/s - variable
Operating Temperature	-15°C to +40°C

STRUCTURE

Material	Colour-finished Steel Head Frame Colour-finished Aluminium A60635 Side Frames
Colour	RAL1013

SPACE REQUIREMENTS

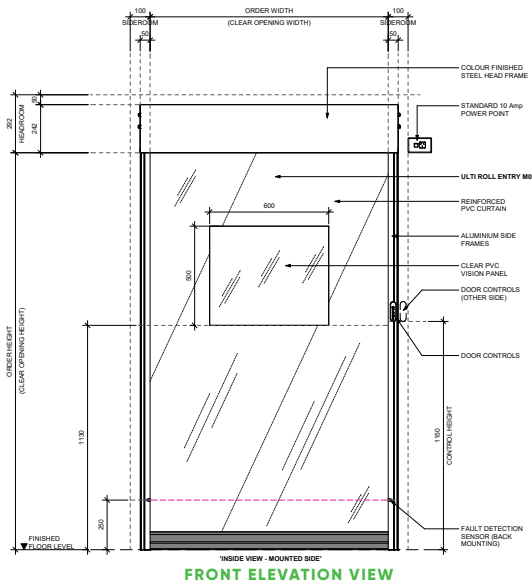
minimum clearances

Headroom	292mm
Sideroom	100mm (motor side), 100mm (non-motor side)

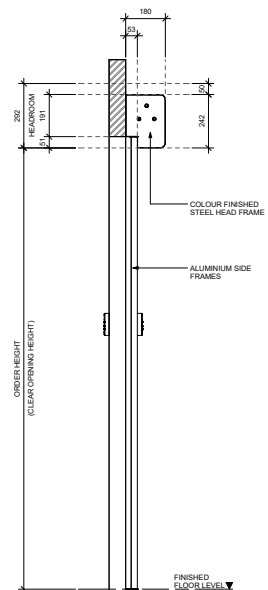
CURTAIN

Material	Reinforced PVC
Colour	Semi-Transparent Clear
Bottom Edge	RAL 9005
Vision Panels	Standard Vision Panel

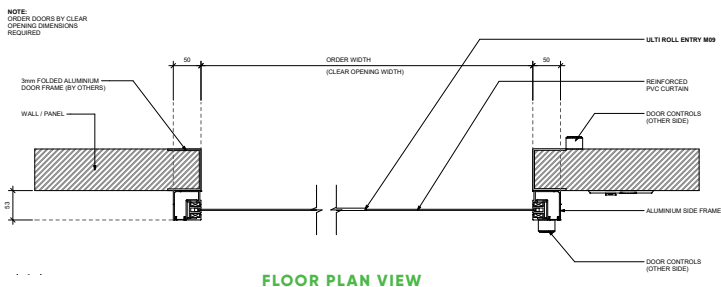
DIMENSIONS



FRONT ELEVATION VIEW



SIDE ELEVATION VIEW



FLOOR PLAN VIEW

MOTORISATION

Motor	24V 90W BLDC Motor
Motor Position	Internal
Control Panel	Internal
Power Supply	240V; Single Phase; 10Amp Rated adjacent to head unit installed to right hand side
Full Load Amperage	5.5 Amp

ACTIVATIONS

Manual	Push button on leg frame Manual Push button
--------	--

SAFETY

Standard Inclusions	1 Set of Infrared Photocell Safety Beams
Emergency Egress	Manual Break-Out

STANDARD INCLUSIONS

Auto Refeed Slot	
Patented Sliding System with High Density Polyethylene Guides	
Perimeter Seal System	
Variable Speed Control	
7m Power Cable and Plug	
Performance Rated to 1 Million Cycles	

WARRANTY

12 Months or 100,000 Cycles	
*Std Warranty terms and conditions apply	

OPTIONAL FEATURES

Activations	Touchless Switch, Eagle Radar
Mounting Options	LH Power Supply
Curtain Design	Full Width Vision Sector Full Vision Curtain Custom Curtain Printing
Emergency Egress	UPS Battery Backup (Single Phase)
Other Features	UVC Lamp - Built Into Head Frame Interlocking Relay