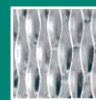
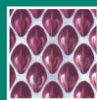


Specialists in Metal Finishes

Dynamic metal finishes suitable for:

Architecture • Elevators • Machinery • Engineering • Refrigeration • Transport



Product catalogue for the metal finishes manufactured by the Rimex Metals Group including Patterned, Bead Blasted and Polished finishes, ColourTex® coloured stainless steel and the Impressions™ and MetalArt™ range of custom designed finishes.

ARCHITECTURE



ELEVATORS



MACHINERY



ENGINEERING



REFRIGERATION



TRANSPORT



GROUP STATEMENT

The Rimex Metals Group has been producing surface finishes on stainless steel and other metals since 1959. With comprehensive manufacturing facilities in the UK, the U.S.A., Australia and South Africa; stocking and distribution companies in Germany, France and Spain; and a global network of agents and distributors, Rimex is capable of delivering to anywhere in the world an extensive selection of exciting and dynamic finishes on a range of metals that include:

- ◆ **Textured patterns** produced by a unique cold rolling process to create 3-dimensional patterns on all types of metal.
- ◆ The **ColourTex®** range of coloured stainless steel.
- ◆ The **Granex™** finishes which is Rimex's bead blasted product range.
- ◆ **MetalArt™** finishes which represent state of the art surface finishing technology enabling standard and custom designs to be etched, bead blasted or coloured into stainless steel and other architectural metals.
- ◆ Rimex **Super Mirror** which is highly polished stainless steel.
- ◆ The **Impressions™** finishes which are custom designs of different shapes, sizes and spacing that can be rolled into all types of metal.
- ◆ **Rigitube™** which is a patterned tube product.

With such a large selection of surface finishes, Rimex has established itself as the leader in the field of superior surface technology on metals.

Customer service and satisfaction is our priority and combined with an extensive and continued investment programme the Rimex Metals Group intends to retain its position at the forefront of metal finishing technology.

NOTE:

1. **Sample Statement:** Samples supplied by Rimex are for promotional purposes only and are not to be used as control materials for goods supplied. If control samples are required for a specific order Rimex needs to be notified in advance.
2. **Product Images Statement:** Product images are not to scale. They are scaled to give the best visual representation of the product.
3. **Promotional Advice and Materials Statement:** All data, images, drawings, descriptions and other information furnished by Rimex including verbal information, in or on its website, catalogues, brochures, CD's, pamphlets, price lists, documents or any other promotional media are intended to be as accurate as possible but are given for general information only and are not binding on Rimex in respect of a particular order. All information, unless stated otherwise, is subject to reasonable variations. Rimex does not accept responsibility for errors or information which is found to be misleading. Before using products supplied or manufactured by Rimex, the customer should satisfy itself of their suitability for any required purpose.
4. **Protective Tape Statement:** Unless ordered to the contrary all material is coated with standard commercial protective tape. No warranty is provided by Rimex as to the suitability of coating used. A copy of appropriate data sheets are available upon request. If a warranty is required the customer should deal direct with a protective tape supplier and notify Rimex of the coating to be used. The use of non-standard protective tape might be an additional cost to previously quoted prices. Protective tape should be removed as soon as practical and should not be exposed to direct sunlight and temperatures that might cause delamination of adhesive on the coating. The customer is always advised to seek information from the coating manufacturer. Rimex cannot provide information or warranties in respect of protective tape.



PRODUCT BENEFITS

PATTERNED FINISHES

AESTHETICS

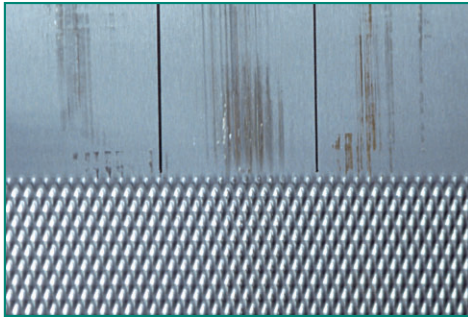
The Patterned Finishes provide a large selection of random and symmetrical designs that are modern and attractive in appearance.

OIL CANNING

Oil canning can be reduced by using the Patterned Finishes to provide improved optical flatness making the product ideal for cladding systems.

DURABILITY

The presence of a Patterned Finish will hide scratches, dents and other impact damage unlike plain flat and polished metals which too readily reveal the lightest of impact. The Patterned Finishes from Rimex are tried and tested, having been used for over 40 years because of their anti-vandal and durable properties.



Test sample illustrating the scratch resistance properties of Rimex's Patterned Finishes as compared to a satin polished finish.

LONG TERM COST SAVINGS

As a direct consequence of the strength and durability benefits provided by the Patterned Finishes, long term cost savings are provided in maintenance and replacement of applications such as elevators, columns, doors, etc.

LOW FRICTION SERVICES

The patterning process provides a reduced contact area so reducing friction problems common in food, drink and photographic machinery. This can significantly speed up production flow.

HEAT INSULATION AND DISSIPATION

The appliance industry uses the Patterned Finishes because they provide heat insulation and dissipation advantages.

WEIGHT SAVING

The patterning process increases the strength and rigidity of metal enabling lighter gauges to be used with consequent cost and weight savings.

REFLECTIVE SURFACES

The Patterned Finishes are used in the lighting industry to break up glare.

COLOURTEX® FINISHES

VIBRANT APPEARANCE

The ColourTex® Product is unique in colour and the perspective that it provides. Unlike painted or other coloured metal products that can be flat in appearance, ColourTex® is reflective, lively and makes a dynamic material for construction projects, retail and catering applications and miscellaneous product use.

COLOURFAST

ColourTex® is colourfast up to 200°C / 392°F.

ADDITIONAL CORROSION RESISTANCE

The ColourTex® process provides an additional layer of protection to stainless steel that improves resistance to corrosive elements on exterior applications on buildings.

SIGNS

The ColourTex® Finishes are ideal for signs where the colours are lively, vibrant and will not tarnish.



GRANEX™ FINISHES

APPEARANCE

Granex™ is a matt finish that is ideal for subtle design applications.

Granex™ is a high quality non-reflective and non-directional finish.

NON-REFLECTIVITY

Granex™ is supplied in various coarsenesses of finish which provide different levels of reflectivity.

CONSISTENT BEAD BLAST FINISH ON SHEET MATERIAL

Rimex is expert at raw material selection and the provision of finishes on metals. Most bead blast manufacturers are not used to manufacturing sheet bead blast product and selecting suitable raw material. As a consequence the consistency of finish can be poor. Rimex has this expertise with the result that Granex™ is a reliably consistent finish.

RAW MATERIAL MANAGEMENT

With all the finishes manufactured by Rimex, raw material selection is crucial to the standard and quality of the final product that is supplied. Rimex is expert in material handling having been in the metal finishing industry since 1959.

METALART™ FINISHES

RANGE OF SELECTION

Rimex has over 50 standard MetalArt™ Finishes to select from plus:

CUSTOM DESIGNS

The flexibility of the MetalArt™ Finishes mean that unique designs are easily and affordably created.

COMBINATION FINISHES

The in-house manufacturing capabilities of Rimex means that multiple and combination finishes can be utilised to create designs on metal that are truly unique.

IMPRESSIONS™ FINISHES

INDIVIDUAL DESIGN CONCEPTS

Create your own Impressions™ finish with flexible design options on the size of character, the layout and finishes that can be used.



The facade at the Wales Millennium Centre, Cardiff, UK in Bronze ColourTex® 6WL finish.

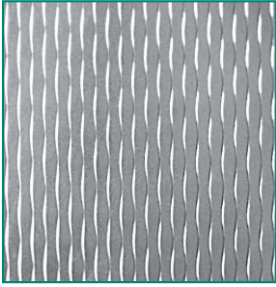
PATTERNED FINISHES

The Patterned Finishes are manufactured by cold rolling various metals in sheet and coil format. The patterned product is then levelled and processed for flatness.

NOTE:

Standard manufacturing parameters are stated throughout this product catalogue. Please enquire for non-standard requirements as these may be possible.

The pattern definition can fall outside normal definition and registration requirements for gauges thicker than 1.5mm. Pattern definition will change with thicker gauges and can differ to samples. Pattern definition can also vary with different batch materials and with separate orders.

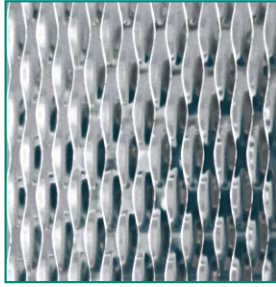


2WL

Width:
1,000mm and 1,250mm STANDARD

Gauge (Stainless Steel):
0.4mm MIN 1.0mm MAX

Gauge (Aluminium):
0.4mm MIN 1.2mm MAX

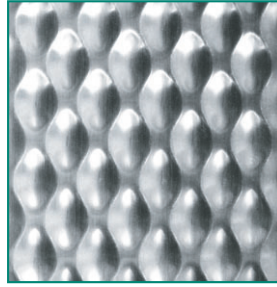


5WL

Width:
1,000mm and 1,250mm STD, 1,500mm ON REQUEST

Gauge (Stainless Steel):
0.3mm MIN 2.0mm MAX

Gauge (Aluminium):
0.4mm MIN 2.5mm MAX

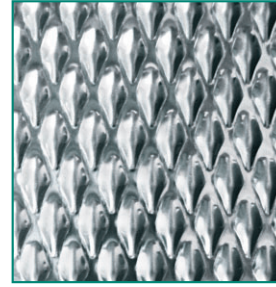


6WL

Width:
1,000mm and 1,250mm STANDARD

Gauge (Stainless Steel):
0.1mm MIN 3.0mm MAX

Gauge (Aluminium):
0.4mm MIN 3.0mm MAX

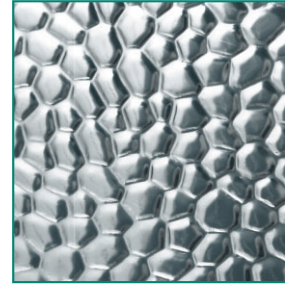


7GM®

Width:
1,000mm and 1,250mm STANDARD* SEE BELOW

Gauge (Stainless Steel):
0.4mm MIN 2.0mm MAX

Gauge (Aluminium):
0.4mm MIN 2.5mm MAX

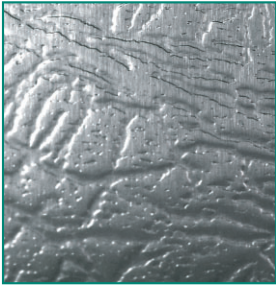


8HP

Width:
1,000mm STANDARD

Gauge (Steel):
0.4mm MIN 1.0mm MAX

Gauge (Aluminium):
0.4mm MIN 1.2mm MAX

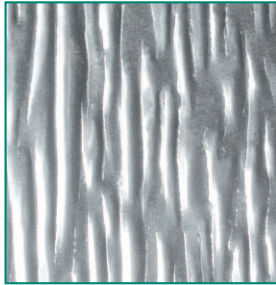


9EH

Width:
1,000mm and 1,250mm STD, 1,500mm ON REQUEST

Gauge (Stainless Steel):
0.4mm MIN 2.0mm MAX

Gauge (Aluminium):
0.4mm MIN 2.0mm MAX



10WG

Width:
1,000mm and 1,250mm STANDARD

Gauge (Stainless Steel):
0.4mm MIN 1.5mm MAX

Gauge (Aluminium):
0.4mm MIN 2.0mm MAX

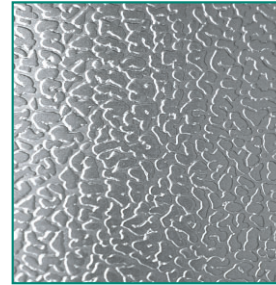


11PS

Width:
1,000mm and 1,250mm STANDARD

Gauge (Stainless Steel):
0.4mm MIN 1.5mm MAX

Gauge (Aluminium):
0.4mm MIN 1.5mm MAX



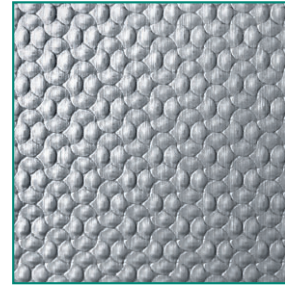
12LG

(Stainless Steel only)

Width:
1,250mm STANDARD

Gauge (Stainless Steel):
0.8mm, 1.2mm, 1.5mm STANDARD

OTHER GAUGES BY APPLICATION.

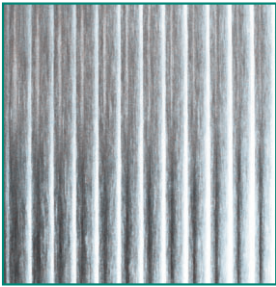


13SD

Width:
1,000mm and 1,250mm STANDARD

Gauge (Stainless Steel):
0.4mm MIN 1.0mm MAX

Gauge (Aluminium):
0.4mm MIN 1.0mm MAX

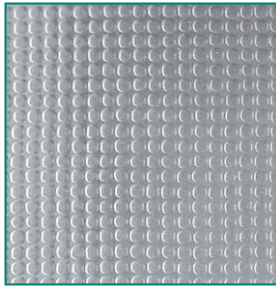


Cambridge

Width:
1,000mm and 1,250mm STANDARD

Gauge (Stainless Steel):
0.4mm MIN 2.0mm MAX

Gauge (Aluminium):
0.4mm MIN 1.5mm MAX



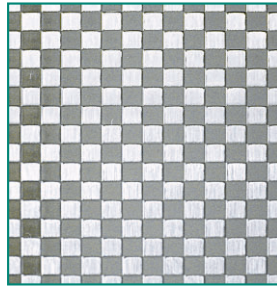
Canvas

(Stainless Steel only)

Width:
1,250mm STANDARD

Gauge (Stainless Steel):
0.8mm, 1.5mm STANDARD

OTHER GAUGES BY APPLICATION.



Checks

(Stainless Steel only)

Width:
1,250mm STANDARD

Gauge (Stainless Steel):
0.8mm, 1.2mm, 1.5mm STANDARD

OTHER GAUGES BY APPLICATION.



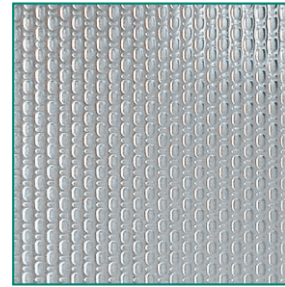
Iceflower

(Stainless Steel only)

Width:
1,250mm STANDARD

Gauge (Stainless Steel):
0.8mm, 1.2mm, 1.5mm STANDARD

OTHER GAUGES BY APPLICATION.



Linen

(Stainless Steel only)

Width:
1,250mm STANDARD

Gauge (Stainless Steel):
0.8mm, 1.2mm, 1.5mm STANDARD

OTHER GAUGES BY APPLICATION.

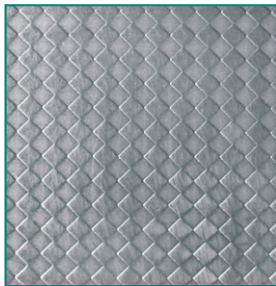


Quilted

Width:
1,000mm and 1,250mm STANDARD

Gauge (Stainless Steel):
0.4mm MIN 0.8mm MAX

Gauge (Aluminium):
0.4mm MIN 1.2mm MAX



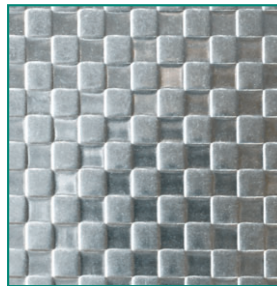
Rhomboids

(Stainless Steel only)

Width:
1,250mm STANDARD

Gauge (Stainless Steel):
0.8mm, 1.2mm, 1.5mm STANDARD

OTHER GAUGES BY APPLICATION.



Squares

(Stainless Steel only)

Width:
1,250mm STANDARD

Gauge (Stainless Steel):
0.8mm, 1.2mm, 1.5mm STANDARD

OTHER GAUGES BY APPLICATION.



TreadTex®

Width:
1,000mm and 1,250mm STD, 1,500mm ON REQUEST

Gauge (Stainless Steel):
0.4mm MIN 3.0mm MAX

Gauge (Aluminium):
0.4mm MIN 4.0mm MAX

FORMS OF SUPPLY

METALS

Stainless steel: all grades including 304 / 1.4301 • 316 / 1.4401 • 430 / 1.4016

Aluminium: all grades including 1,000, 3,000 and 5,000 series.

Brass, Bronze, Copper, Carbon steels, Galvanised steels, Mild steels and Titanium.

OTHER METALS AVAILABLE UPON REQUEST.

FINISHES

Stainless steel: 2B, bright annealed, bead blasted [see Granex® Finishes], coloured stainless steel [see ColourTex® Finishes] and various polish options [see Other Polished Finishes].

Aluminium: mill, satin, brushed and polished finishes.

LENGTHS

Standard lengths are 2,000mm, 2,500mm and 3,000mm. NON-STANDARD LENGTHS ARE AVAILABLE UPON REQUEST.

WIDTHS

Standard widths are 1,000mm and 1,250mm.

INDIVIDUAL PATTERN PARAMETERS ARE AS STATED BELOW THE PRODUCT IMAGES. NON-STANDARD SLIT WIDTH REQUIREMENTS ARE AVAILABLE UPON REQUEST.

*PLEASE CHECK GAUGE AND WIDTH COMPATIBILITY BEFORE SPECIFYING OR ORDERING THE 7GM® PRODUCT.

COLOURTEX® FINISHES

The ColourTex® can be combined with the substrate finishes of mirror or satin polishes, Granex™ bead blast or with Rimex's other product lines of Patterned or MetalArt™ finishes.

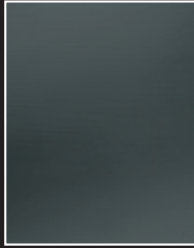
ColourTex® is a sheet product available on stainless steel only. The colours produced under the ColourTex® process are; black, blue, bronze, champagne, gold, green and red.

NOTE:

The nature of coloured stainless steel is that the colour and/or tone may vary in different lighting conditions, between batches of stainless steel and production runs. It is often necessary to agree control samples prior to manufacture.

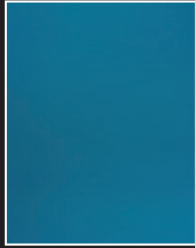
On larger orders it is advisable to agree control samples to define an agreeable colour range prior to the placing of an order. Unless control samples are agreed Rimex is not responsible for differences in tone and appearance of the ColourTex® product.

Due to the nature of the manufacturing process all ColourTex® products will be supplied with holes approximately 5mm in diameter that run down the length of one side of each sheet every 1,000mm.



Mirror Black

Width:
1,000mm and 1,250mm STD
Gauge:
0.6mm MIN 2.0mm MAX



Mirror Blue

Width:
1,000mm and 1,250mm STD
Gauge:
0.6mm MIN 2.0mm MAX



Mirror Bronze

Width:
1,000mm and 1,250mm STD
Gauge:
0.6mm MIN 2.0mm MAX



Mirror Champagne

Width:
1,000mm and 1,250mm STD
Gauge:
0.6mm MIN 2.0mm MAX



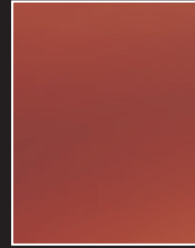
Mirror Gold

Width:
1,000mm and 1,250mm STD
Gauge:
0.6mm MIN 2.0mm MAX



Mirror Green

Width:
1,000mm and 1,250mm STD
Gauge:
0.6mm MIN 2.0mm MAX



Mirror Red

Width:
1,000mm and 1,250mm STD
Gauge:
0.6mm MIN 2.0mm MAX



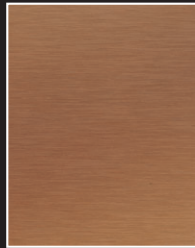
Satin Black **Satin Charcoal**

Width:
1,000mm and 1,250mm STD
Gauge:
0.6mm MIN 2.0mm MAX



Satin Electro-Blue

Width:
1,000mm and 1,250mm STD
Gauge:
0.6mm MIN 2.0mm MAX



Satin Electro-Bronze

Width:
1,000mm and 1,250mm STD
Gauge:
0.6mm MIN 2.0mm MAX



Satin Electro-Champagne

Width:
1,000mm and 1,250mm STD
Gauge:
0.6mm MIN 2.0mm MAX



Satin Electro-Gold

Width:
1,000mm and 1,250mm STD
Gauge:
0.6mm MIN 2.0mm MAX



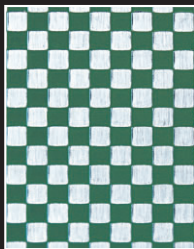
Satin Electro-Green

Width:
1,000mm and 1,250mm STD
Gauge:
0.6mm MIN 2.0mm MAX



Satin Electro-Red

Width:
1,000mm and 1,250mm STD
Gauge:
0.6mm MIN 2.0mm MAX



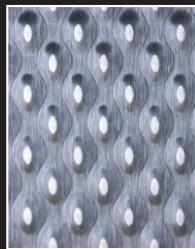
ColourTex Checks

Width:
1,250mm STANDARD
Gauge:
0.8mm, 1.2mm, 1.5mm STD
OTHER GAUGES BY APPLICATION.



Leathergrain

Width:
1,250mm STANDARD
Gauge:
0.8mm, 1.2mm, 1.5mm STD
OTHER GAUGES BY APPLICATION.



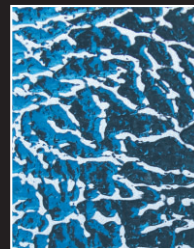
Pagoda

Width:
1,000mm and 1,250mm STD
Gauge:
0.5mm MIN 1.5mm MAX



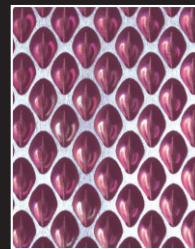
Paladin

Width:
1,000mm and 1,250mm STD
Gauge:
0.5mm MIN 1.0mm MAX



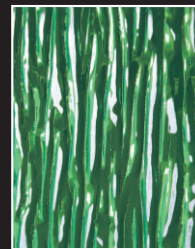
Pampas

Width:
1,000mm and 1,250mm STD
Gauge:
0.5mm MIN 1.5mm MAX



Pearl

Width:
1,000mm and 1,250mm STD
Gauge:
0.5mm MIN 1.5mm MAX



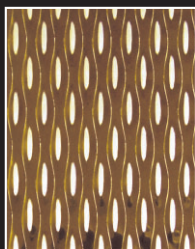
Pegasus

Width:
1,000mm and 1,250mm STD
Gauge:
0.5mm MIN 1.5mm MAX



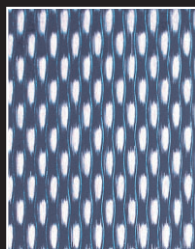
Pinstripe

Width:
1,000mm and 1,250mm STD
Gauge:
0.5mm MIN 1.5mm MAX



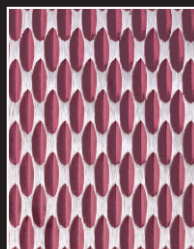
Pippin

Width:
1,000mm and 1,250mm STD
Gauge:
0.5mm MIN 1.5mm MAX



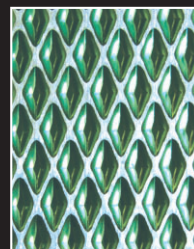
Poppy

Width:
1,000mm and 1,250mm STD
Gauge:
0.5mm MIN 0.8mm MAX



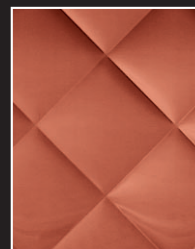
Prism

Width:
1,000mm and 1,250mm STD
Gauge:
0.5mm MIN 1.5mm MAX



Pyramid

Width:
1,000mm and 1,250mm STD*
Gauge:
0.5mm MIN 1.5mm MAX



Quilted

Width:
1,000mm and 1,250mm STD
Gauge:
0.5mm MIN 0.8mm MAX

FORMS OF SUPPLY

METALS
Stainless steel: all grades including 304/1.4301 • 316/1.4401 • 430/1.4016

FINISHES
Stainless steel: mirror, satin and vibration polishes [see Other Polished Finishes], bead blasted [see Granex™ Finishes] and patterned coloured stainless steel [see ColourTex™ Finishes] and combined with custom etched designs [see MetalArt™ Finishes].

LENGTHS
Standard lengths are 2,000mm, 2,500mm and 3,000mm and the maximum length is 3,100mm.

NON-STANDARD LENGTHS ARE AVAILABLE UPON REQUEST.

WIDTHS
Standard widths are 1,000mm and 1,250mm.

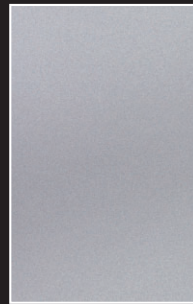
INDIVIDUAL PATTERN PARAMETERS ARE AS STATED BELOW THE PRODUCT IMAGES. NON-STANDARD SLIT WIDTH REQUIREMENTS ARE AVAILABLE UPON REQUEST.
*PLEASE CHECK GAUGE AND WIDTH COMPATIBILITY BEFORE SPECIFYING OR ORDERING THE PYRAMID PRODUCT.

BEAD BLASTED/GRANEX™ FINISHES

The Granex™ Finishes involve the controlled bead blasting of sheet and coil stainless steel and other metals with various media to produce a range of matt finishes in different coarsenesses.

Most bead blast providerspeen components rather than sheet material.

By comparison because Rimex has extensive expertise in sheet raw material selection and handling alongside its abilities in metal finishing, the Granex™ finishes produced by Rimex are more reliably consistent and are of a superior quality to those offered by other producers.



Granex™ MIA

Width: 1,000mm,
1,250mm and 1,500mm STD
Gauge (Stainless Steel):
0.8mm - 5.0mm+



Granex™ CIA

Width: 1,000mm,
1,250mm and 1,500mm STD
Gauge (Stainless Steel):
0.8mm - 5.0mm+

FORMS OF SUPPLY

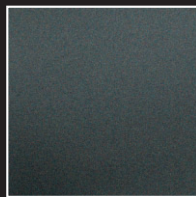
METALS
Stainless steel: all grades including 304/1.4301 • 316/1.4401 • 430/1.4016
OTHER METALS MANUFACTURED UPON REQUEST.

FINISHES
Stainless steel: 2B, bright annealed, patterned finishes, coloured stainless steel [see ColourTex™ Finishes].

LENGTHS
Standard lengths are 2,000mm and 2,500mm.
NON-STANDARD LENGTHS ARE AVAILABLE UPON REQUEST.

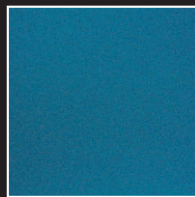
WIDTHS
Standard widths are 1,000mm, 1,250mm and 1,500mm.
NON-STANDARD LENGTHS ARE AVAILABLE UPON REQUEST.

NOTE:
Thicker gauges are available but the consistency of the visual appearance of raw material tends to deteriorate over 2.0mm and this can effect the appearance of the Granex™ Finishes with thicker gauges.
The Granex™ product can be supplied with minor defects which are present in the raw material. This is the nature of the finish.



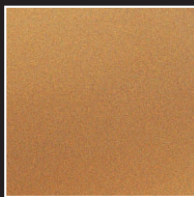
Granex™ Black

Width: 1,000mm,
1,250mm and 1,500mm STD
Gauge (Stainless Steel):
0.8mm MIN 1.5mm MAX



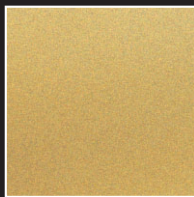
Granex™ Blue

Width: 1,000mm,
1,250mm and 1,500mm STD
Gauge (Stainless Steel):
0.8mm MIN 1.5mm MAX



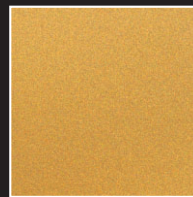
Granex™ Bronze

Width: 1,000mm,
1,250mm and 1,500mm STD
Gauge (Stainless Steel):
0.8mm MIN 1.5mm MAX



Granex™ Champagne

Width: 1,000mm,
1,250mm and 1,500mm STD
Gauge (Stainless Steel):
0.8mm MIN 1.5mm MAX



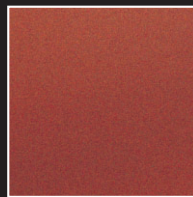
Granex™ Gold

Width: 1,000mm,
1,250mm and 1,500mm STD
Gauge (Stainless Steel):
0.8mm MIN 1.5mm MAX



Granex™ Green

Width: 1,000mm,
1,250mm and 1,500mm STD
Gauge (Stainless Steel):
0.8mm MIN 1.5mm MAX



Granex™ Red

Width: 1,000mm,
1,250mm and 1,500mm STD
Gauge (Stainless Steel):
0.8mm MIN 1.5mm MAX

METALART™ FINISHES

The MetalArt™ Finishes is a collective description of the effects that can be produced on stainless steel and other metals by different processes that include controlled etching, the ColourTex® or bead blasting processes, colour stripping or any of the other processes manufactured by Rimex.

Unique and custom designs are easily produced by transferring your computer generated artwork onto stainless steel and other metals.

NOTE:
For full details of the MetalArt™ range, please visit the MetalArt™ section on our website: www.rimexmetals.com

MA001 Lattice	MA002 Snake Skin	MA003 Hydra	MA004 Plasma	MA005 Speckle	MA006 Stripe	MA008 Beehive	MA009 Locklink	MA011 Maze	MA012 Tracks	MA015 Mirage	MA016 Frost
										FORMS OF SUPPLY	
MA018 Trelis	MA019 Scorpion	MA020 Network	MA021 Cubix	MA022 Squares	MA026 Kubo	MA028 Quadro	MA030 Oasis	MA031 Flecks	MA033 Gems	METALS Stainless steel: all grades including 304/1.4301 • 316/1.4401 OTHER ARCHITECTURAL METALS SUCH AS BRASS AND BRONZES ARE POSSIBLE.	
										FINISHES Bead blasted, etched, polishes including brush, satin and mirror polishes, utilisation of the ColourTex™ process, colour stripping; all of these can be used in combination together. PLEASE ASK FOR FURTHER DETAILS.	
MA034 Opal	MA035 Images	MA036 Neurona	MA039 Celtic	MA040 Tylex	MA050 Crowns	MA056 Noveau	MA071 Hori. Stripe	MA280 Bubbles	MA044 Paint Splatter	LENGTHS Standard lengths are 2,000mm and 2,500mm. LONGER LENGTHS ARE AVAILABLE UPON REQUEST.	
										WIDTHS Standard widths are 1,000mm and 1,250mm.	
										GAUGES 0.8mm to 1.5mm as standard.	

CUSTOM METALART™ FINISHES

Some illustrations of custom MetalArt™ Finishes.

These can be simple or complex designs utilising several finishing techniques including etching, the ColourTex® or bead blasting processes, colour stripping or any of the other processes manufactured by Rimex.



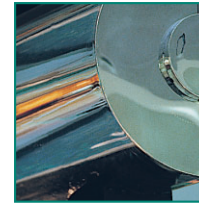
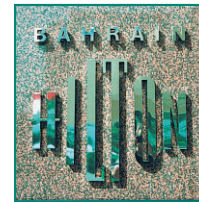
SUPER MIRROR



Rimex's Super Mirror is as near a perfect polish that can be produced on stainless steel. Super Mirror is blemish free and has perfect reflective quality.

The reflectivity of Super Mirror creates light and space and is easily fabricated. Unlike glass mirror, Super Mirror can be used in food preparation, ceiling and high pedestrian areas because it will not shatter.

Rimex's Super Mirror is of a higher quality than No.7 and No.8 mirror polishes.



FORMS OF SUPPLY

METALS
Stainless Steel: all grades including 304 / 1.4301 • 316 / 1.4401

LENGTHS
2,440mm and 3,050mm.
OTHER SIZES SUPPLIED BY SPECIAL ARRANGEMENT AND SUBJECT TO MINIMUM QUANTITIES.
NO.7 MIRROR POLISHED STAINLESS STEEL ALSO AVAILABLE UPON REQUEST.

WIDTHS
1,220mm.

GAUGES
0.8mm, 1.0mm, 1.2mm, 1.5mm and 2.0mm.

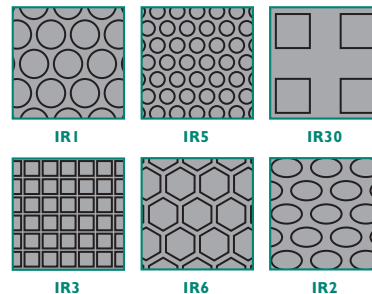
IMPRESSIONS™ FINISHES

The Impressions™ Finishes allow large definition patterns to be formed and rolled into stainless steel, aluminium and other metals. The Impressions™ technology allows custom rolled designs to be created.

Options to consider include:

- ◆ The shape of the character impression.
- ◆ The position and layout of the impression.
- ◆ The metal to be used.
- ◆ The finish or finishes to be used which could be from the Patterned, ColourTex®, Granex™, MetalArt™, Super Mirror finishes or a brushed, satin or other polish.

A selection of some of the Impressions™ Finishes are illustrated.



FORMS OF SUPPLY

METALS
Stainless Steel, aluminium, brass and bronzes.
OTHER METALS UPON REQUEST.

FINISHES
Select from 2B, BA, bead blasted, etched, brush, satin and mirror polishes and utilisation of the ColourTex™ process.
PLEASE ASK FOR FURTHER DETAILS.

LENGTHS
Standard lengths are 2,000mm, 2,500mm and 3,000mm.
LONGER LENGTHS ARE AVAILABLE UPON REQUEST.

WIDTHS
Standard widths are 1,000mm and 1,250mm.

GAUGES
0.5mm - 0.8mm as standard.
OTHER GAUGES UPON REQUEST.

OTHER POLISHED FINISHES

Rimex manufactures the full range of polished finishes and combined with its raw material expertise can offer a high quality product and service. All metals including stainless steel and aluminium can be polished.

Polished finishes manufactured by Rimex are:

Belt polishes:

- ◆ Silicon 120 to 320 Grit.
- ◆ Aloxide 40 to 180 Grit.
- ◆ Rimex operates a 2,000mm wide belt-polishing machine for wide material requirements.
- ◆ Diagonal and horizontal polishing is also available.

Brush polishes:

- ◆ Brush polish.
- ◆ Hairline polish.

Mirror Finishes:

- ◆ No.7 polish.
- ◆ See above for Super Mirror.

Custom polishes:

- ◆ Angel Hair / Vibration Polish which is a random and delicate brush polish.
- ◆ Engine Turn / Circle Polishing.
- ◆ Combination or blended polishes are also possible. Please ask for further information.
- ◆ Multi-Directional polishes. Please ask for further information.



Multi-Directional polish - Basketweave Finish.

RIGITUBE™



RigiTube® is a patterned tube product that provides grip, durability and aesthetics that plain unpatterned tubing fails to offer.

Approved by disabled associations as a safety fitting because of its properties in providing grip to transit, engineering and architectural applications RigiTube® has practical benefits beyond aesthetics.

Durable and readily fabricated, RigiTube® can be used in all environments for foot and hand rail purposes. The use of a pattern will also hide and deflect scratches and dents.



FORMS OF SUPPLY

METALS
Stainless Steel: all grades including 304 / 1.4301 • 316 / 1.4401 • 430 / 1.4016

DIAMETERS
30mm and 35mm.

LENGTHS
3,000mm and 6,000mm.
REQUIREMENTS OUTSIDE THESE FORMS OF SUPPLY BY SPECIAL ARRANGEMENT.

GAUGES
1.2mm and 1.5mm.

PATTERNS
6WL, 7GM™ and 7GM™ reverse are sold as standard.
OTHER PATTERNS ARE AVAILABLE ON REQUEST AND MAY BE SUBJECT TO MINIMUM QUANTITY REQUIREMENTS.

Rimex Metals Group:

Website: www.rimexmetals.com

Rimex Metals (Australia) Pty Ltd

6 Warringah Close
Somersby
NSW 2250
Australia

Tel: +61 (2)4340 5599
Fax: +61 (2)4340 5525
Email: sales@rimexmetals.co.au

Rimex Metal (France) Sarl

10 Rue d'Alsace
95110 Sannois
France

Tel: +33 (1)39 82 38 55
Fax: +33 (1)39 82 49 31
Email: rimexfrance@aol.com

Rimex Metals (Deutschland) GmbH

Schießwiesen 4
73650 Winterbach
Germany

Tel: +49 (0)7181 7096 0
Fax: +49 (0)7181 7096 10
Email: info@rimex_metals.de

Rimex Metals (South Africa) Pty Ltd

372 Kruger Road
Styrdom Park Ext 20
PO Box 1255
Randburg 2125
South Africa

Tel: +27 (11)793 3695/8
Fax: +27 (11)792 2872
Email: rimex@mweb.co.za

Rimex España

Apartado de Corveos 515
28850 Torrejón de Ardoz
Madrid
Spain

Tel: +34 (91)677 98 27
Fax: +34 (91)677 98 51
Email: sales@rimexmetals.com

Rimex Metals (USA) Inc

2850 Woodbridge Avenue
Edison
New Jersey 08837
USA

Tel: +1 (732)549 3800
Fax: +1 (732)549 6435
Email: sales@rimexusa.com

Rimex is also represented in many other countries not listed above. For further details please contact your local Rimex office.



Rimex Metals (UK) Ltd

Aden Road
Ponders End
Enfield
Middlesex
EN3 7SU
United Kingdom

Information Hotline:

Tel: +44 (0)20 8804 0633
Fax: +44 (0)20 8804 7275
Email: sales@rimexmetals.com
Website: www.rimexmetals.com

Specialists in Metal Finishes

NZ AGENT:

Tata Steel International (Australasia) Ltd
7 Bruce Roderick Drive
East Tamaki
Auckland 2013
New Zealand

Tel: +64 9 271 1780
Fax: +64 9 271 1970
Email: architecture@tatasteelnz.com
Website: www.tatasteelnz.com

With manufacturing and supply throughout the world



DISCLAIMER

All assistance and advice given by the Rimex Metals Group and its affiliated companies, on its website including all downloaded information and drawings, in its literature and sales promotion material, by its personnel, agents or representatives is provided in good faith. Such assistance is not intended to form part of any contract, or to be a guarantee or warranty of any Rimex product or design to be fit for any purpose and no liability can be accepted for errors contained in such advice, drawings or information. You are advised to check all information provided by the Rimex Metals Group and its affiliated companies with other sources. Written and drawn specifications, test results and all information received from Rimex are intended as suggestions only; their accuracy cannot be guaranteed in any way.