

ROCKCOTE

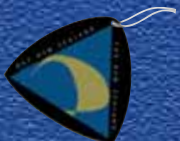
s y s t e m s

INTEGRA AAC CAVITY PLUS PLASTER CLADDING SYSTEM

Cavity based AAC
concrete
panel cladding
system

www.rockcote.co.nz

0800 50 70 40



September
2010

ROCKCOTE

INTEGRA

AAC MASONRY PANEL

WHAT IS THE.....

Rockcote **INTEGRA** AAC Panel CAVITY PLUS Render System?

A cavity based Plaster Cladding System applied over Lightweight AAC concrete panels.

Modern architectural trends place tremendous demands on the building envelope. Rockcote **INTEGRA** AAC Panel CAVITY PLUS System offers the flexibility to meet these demands in a cost effective manner; combining a wide variety of textures with the extensive palette of the Resene Total Colour System.

Proven Technology

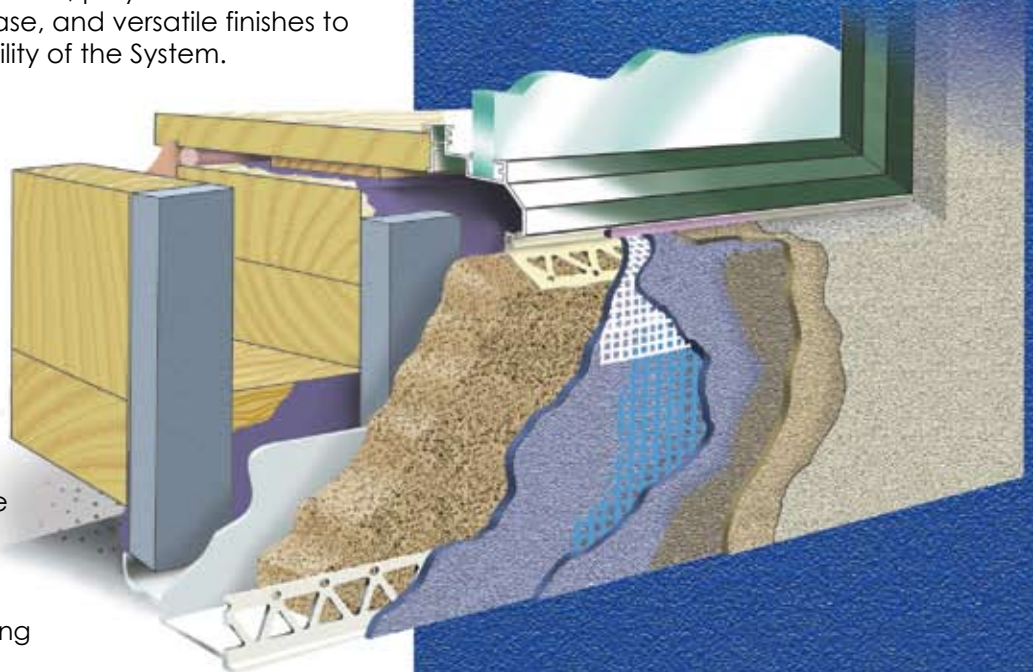
The Rockcote **INTEGRA** AAC Panel CAVITY PLUS System incorporates the time-honoured system of drained, vented cavities to create a DRYZONE in the building fabric, combined with the latest polymer modified render technology to create a robust wall structure. Our composite exterior Plaster Cladding System is made up of mechanically fixed **INTEGRA** AAC Panel over 20 or 40mm cavity battens; fibreglass reinforced, polymer modified renders; weather protected base, and versatile finishes to ensure the integrity and durability of the System.

Attractive and Durable

This System carries our written 15 year Product Performance Warranty and a 5 year Workmanship Warranty from your Registered Plasterer(s). Rockcote **INTEGRA** AAC Panel CAVITY PLUS System incorporates uPVC base mouldings, window jamb and sill flashings for extra security from water penetration, creating beautiful and durable exteriors you can trust.

System Features:

- Lightweight concrete cladding
- Impact resistance
- Drained and vented cavity
- Hand Plastered
- Registered Plasterer Installation
- Rockcote OnSite Assistance
- MyHome Maintenance guide
- uPVC Flashings
- Resene Total Colour System
- BRANZ Appraised.



**Solutions in
Plaster**

ROCKCOTE

©

s y s t e m s

Resene

Group Company



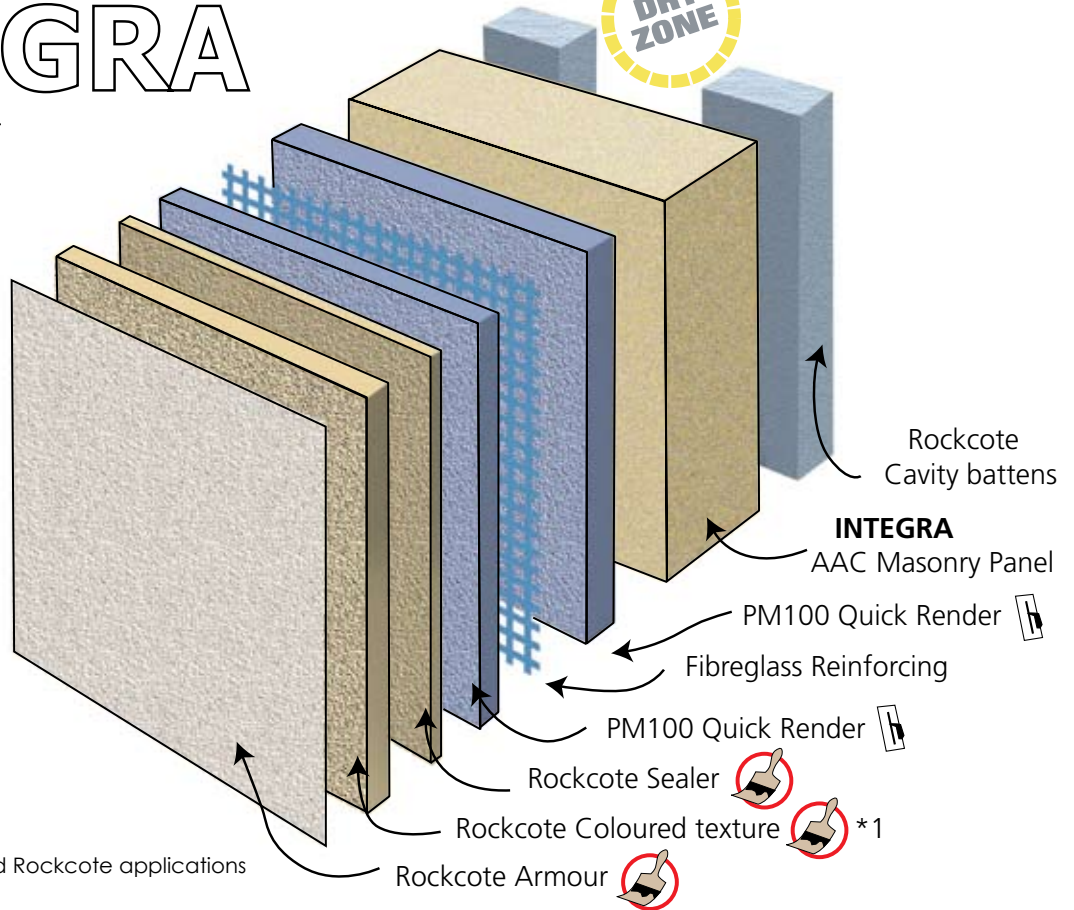
BRANZ Appraised
Appraisal No. 681 [2010]

ROCKCOTE INTEGRA

AAC MASONRY PANEL



*1 Rockcote uncoloured Mineral (sand & cement) texture finishes are available upon request. Rockcote Specifications require that mineral texture finishes are painted with a Rockcote Systems approved 3 coat paint system.



Indicates Hand Plastered Rockcote applications
 Indicates pre-coloured Rockcote applications

Integra Cavity **EPS Cavity** **Insulated Masonry** **Masonry Block** **Monotek** **LifeRock** **Brick** **ICF (Polystyrene Blocks)** **Tilt Panel** **Milano interior**

Insulated		○	○				○		
Impact Resistance	●			○		○		○	
Acoustic	●			○		○		○	
Resene Colours	●	○	○		○	○	○	○	○
BRANZ	●	○			○				
Fire Tests	●	○	○	○	○	○	○	○	○
FPB	●	○	○	○	○	○	○	○	○
Full Render System	●	○	○	○	○	○	○	○	
Substrate supplied	●	○	○						
Acrylic Texture	●	○	○	○	○	○	○	○	
Mineral Texture	●	○	○			○	○	○	○
Cavity System	●				○				
GreenSite	●	○	○	○	○	○	○	○	
Masonry Construction			○	○			○	○	
Window Reveals	●	○	○	○			○	○	



0800 50 70 40
 www.rockcote.co.nz
 help@rockcote.co.nz

Rockcote Integra Cavity Plus Render System Specification

1. General

1.1 Rockcote Render System Information

Substrate : Timber Frame - 50mm Integra Panel on a 20mm cavity
Coating System : Standard Render (6-8mm Meshed)
Finish : Rockcote Acrylic Based Texture - Classico Swirl

1.2. Description

This specification deals with Rockcote Integra Cavity Plus Render System applied over a 50mm Integra Panel substrate. The system incorporates the installation of a 20mm drainage cavity and pre-coloured acrylic texture finish.

1.3. Properties

Integra Panels have the following material properties:

- Dry Density: 520kg/m³
- Compressive strength : 4mPa
- Modulus of Elasticity, E: 1800MPa
- Thermal Conductivity: 0.12 W/(mk)
- Thermal Resistivity, R: 0.29m²K/W
- Substrate Thickness: 50mm Integra panel
- Total thickness: 55 mm (min/average) coatings and substrate
- Weight: 32 kg/m² coatings and substrate, considered a Medium weight cladding in terms of NZS3604
- Windzone: All wind zones of 3604

2. Building Code Compliance

If the project has a building consent then the following clauses apply.

2.1. Durability

The work covered by this part of the specification has been designed and constructed to achieve a minimum durability of 15 years.

2.2. On Going Maintenance Instructions

Provide ongoing maintenance instructions required to meet the performance requirements of the NZBC B2 Durability.

2.3. Substrate

The substrate for this Rockcote RenderSpec™ has had all the appropriate inspections carried out by a BCA representative and that it complies with the NZBC requirements. If the substrate is existing, all tests and checks have been carried out by a BCA representative or Independent assessor and that the substrate is found to be sound and stable.

3. Documents

3.1. Abbreviations

The following abbreviations are used throughout this work section:

- PPCS Proprietary Plaster Cladding System
- LRV Light Reflectance Value
- MSDS Material safety data sheet(s)
- BCA Building Control Authority
- NZBC New Zealand Building Code
- NZS New Zealand Standards
- AS/NZ Australia New Zealand Standard
- WANZ Windows Association of New Zealand

3.2. Documents Referred to

- NZS 3603 Timber structures standard
- NZS 3604 Timber framed buildings
- NZBC B2 Durability
- NZBC E2/AS1 External moisture
- AS/NZS 1170.2 Structural design actions - Wind actions
- NZS 3602 Timber and wood-based products for use in building
- NZBC E3/AS1 Internal moisture, 1.0 Prevention of fungal growth
- BRANZ Bulletin 353 Ground clearances
- BRANZ Bulletin 418 Weathertightness do's and don'ts
- BRANZ Bulletin 439 Condensation risk in walls
- WANZ WIS

3.3. Manufacturers Documents

- Rockcote Technical Resources September 2009
- Rockcote Systems Project Guide

- Resene: Total Colour System
- Rockcote TradeSpec Version 3

Copies of the above literature are available at;

Rockcote Systems
Web: www.rockcote.co.nz
Telephone: 0800 50 70 40
Resene Paints
Web: www.resene.co.nz
Telephone: 0800 RESENE (0800 737 363)

3.4. No Substitutions

Substitutions are not permitted to any specified Rockcote Systems wall cladding system. Materials and execution to Rockcote Systems specification except where varied by this specification and supported by architectural detailing.

3.5. Qualifications

Use only PPCS registered plasterers licensed to apply the Rockcote Systems exterior render systems.

4. Documentation

4.1. Finish Sample

Submit one 300 mm x 300 mm sample of the selected texture finish and colour for approval. Obtain signature of acceptance on sample and return to the Registered Plasterer.

4.2. Maintenance Instructions

Provide Rockcote Systems Maintenance Guide on or before practical completion of the contract for issuing to the building owner. Rockcote Systems Maintenance Guide to be provided on request.

4.3. Producer Statement

If the project has a building consent then a producer statement shall be compiled by the Registered Plasterer in the form as required by the BCA.

4.4. Health and Safety

Refer to the requirements of the Health and Safety in Employment Act and OSH: Guidelines for the provision of facilities and general safety in the construction industry. Supply protective clothing and equipment. Inform employees and others on site of the hazards and put into place procedures for dealing with emergencies. Obtain from Rockcote Systems the MSDS for each product. Keep sheets on site and comply with the required safety procedures.

4.5. Warranty

Warrant this system under normal environmental and use conditions against failure. Rockcote Systems system warranty.
Materials: 15 years by Rockcote Systems - Materials
Execution: 5 years by Registered Plasterer - Workmanship

4.6. Performance

Accept responsibility for the structural and weather-tight performance of the cladding installation.

4.7. OnSite Assistance

Allow to inspect the whole of the work at each stage. Determine a programme for onsite assistance including notification when each part and stage of the work is ready for inspection prior to the work commencing. Permit representatives of Rockcote Systems to inspect the work in progress and to take samples of their products from site if requested refer Rockcote Systems Project Guide.

5. Components

5.1 Rockcote MultiStop - bedding compound

- Polymer-modified, cement based dry plaster mix. Supplied in 15kg bags.

5.2 Fasteners

- AS3566 Class 4 - Hot-dip galvanised

5.3 Battens

- 40mm x 22mm VH Grade Polystyrene Battens - AS 1366 Part 3 Class H (with fire retardant).

5.4 Integra Panel

- Length : 2200mm
- Width : 600mm
- Thickness : 50mm
- Weight : 33kg

5.5 Reinforcing Mesh

- Rockcote brand - alkali resistant - red (160gsm), weave (mesh) size 5 mm x 4 mm
- Rockcote brand - alkali resistant - blue (170gsm), weave (mesh) size 8 mm x 9 mm

- Rockcote Sticky Mesh - Soft Mesh 150mm Wide

5.6 Rockcote PM100 Quick Render

- Polymer-modified cement-based dry plaster mix. Supplied in 20 kg bags

5.7 Rockcote Render Prime or Resene Limelock

- Rockcote Render Prime - Water based acrylic polymer dispersion tinted (optional) to the colour of Rockcote finishing coats. Supplied in 15 litre pails.
- Resene Limelock - Water based acrylic polymer dispersion. Supplied in 10 litre pails.

5.8 Rockcote Acrylic Texture

- 100% acrylic, high-build texture coating. Supplied in 15 Litre pails

5.9 Resene X200 or Rockcote Armour

- Resene X200 - Acrylic reinforced waterproof membrane. Supplied in 4 and 10 litre pails. Tinted to the selected colour.
- Rockcote Armour - Acrylic-based protective finish. Supplied in 4 and 15 litre pails. Tinted to the selected colour.

5.10 PVC Flashings and Accessories

- Rockcote Standard Corner Flashing
- Rockcote Control Joint - vertical
- Rockcote Control Joint - horizontal
- Rockcote Head Soakers
- Protecto EIFS Flashing Tape
- Rockcote Starter Strip
- Rockcote EdgeSeal Flashing

5.11 Head Flashings

- Supplied by the builder for both recessed and face-fixed timber, aluminium. PVC joinery.
- For all environments - powder coated aluminium or PVC.

5.12 Sealant

- Silaflex MS or equivalent BRANZ Appraised Sealant
- Sealant must comply with WANZ requirements for adhesion to powder coated aluminium

5.13 UPVC Flashing Primer

- Rockcote MultiStop Bedding Compound mixed with diluted acrylbond resin. MultiStop Bedding Compound supplied in 15 kg bags.

6. Installation

6.1. General

- Check Building wraps/underlays and flashing tapes - Refer to Rockcote TradeSpec™ document 1.1
- Design Information - Refer to Rockcote TradeSpec™ document 1.2
- Check Joinery - Refer to Rockcote TradeSpec™ document 1.3
- Check Timber Framing - Refer to Rockcote TradeSpec™ document 2.1
- Control Joints - Refer to Rockcote TradeSpec™ document 1.4
- Maintenance - Refer to Rockcote TradeSpec™ document 1.7

6.2. Substrates

- Cavity and Batten installation - Refer to Rockcote TradeSpec™ document 2.5
- Fastening Integra Panels - to timber frame - Refer to Rockcote TradeSpec™ 2.7
- Rockcote MultiStop Substrate Patching - Refer to Rockcote TradeSpec™ document 4.10
- Check and Prepare Integra Panels - Refer to Rockcote TradeSpec™ 2.11

6.3. Flashings & Accessories

- Rockcote Flashings - Refer to Rockcote TradeSpec™ document 3.1
- Builder Supplied Flashings - Refer to Rockcote TradeSpec™ document 3.2
- Sealants - Refer to Rockcote TradeSpec™ document 3.4
- Adhesives- Refer to Rockcote TradeSpec™ document 3.5
- Expanding Foams - Refer to Rockcote TradeSpec™ document 3.6
- Butyl Based Flashing Tapes - Refer to Rockcote TradeSpec™ document 3.9
- Polystyrene feature moulding installation - Refer to Rockcote TradeSpec™ document 3.10 (optional)

6.4. Applying Plaster

- General Render Information - Refer to Rockcote TradeSpec™ document 4.1
- Base Coat - Refer to Rockcote TradeSpec™ document 4.2
- Mesh Installation - Refer to Rockcote TradeSpec™ document 4.3
- Levelling Coat - Refer to Rockcote TradeSpec™ document 4.4

6.5. Sealing & Finishing

- General Finish Coat Information- Refer to Rockcote TradeSpec™ document 5.1
- Sealer Application - Refer to Rockcote TradeSpec™ document 5.3
- Acrylic Texture Application - Refer to Rockcote TradeSpec™ document 5.5
- Rockcote Armour Application - Refer to Rockcote TradeSpec™ document 5.7

or

- 2 x coats Resene X200 Application - Refer to Rockcote TradeSpec™ 5.8
- Cleaning Up - Refer to Rockcote TradeSpec™ document 5.10

7. Cleaning

Remove debris, unused materials and elements from the site relating to the plaster system application. Replace damaged, cracked or marked elements. Leave the whole of this work to the required standard.

8. Final Onsite Assistance

Final Onsite Assistance by Rockcote Systems Registered plasterer and Rockcote project assessor of the entire finished cladding to take place immediately after completion of the wall cladding work and any defects or subsequent damage made good immediately.

Important:

This specification must be read in conjunction with the Rockcote Systems technical drawings.

No alteration to the Rockcote RenderSpec[™] is permitted.

This Rockcote RenderSpec[™] must be read in conjunction with Rockcote TradeSpec[™] documents version 3

Rockcote Integra Cavity Plus Render System Specification

1. General

1.1 Rockcote Render System Information

Substrate : Timber Frame - 50mm Integra Panel on a 20mm cavity
Coating System : Standard Render (6-8mm Meshed)
Finish : Rockcote Mineral Based Texture - Traditionale

1.2. Description

This specification deals with Rockcote Integra Cavity Plus Render System applied over a 50mm Integra Panel substrate. The system incorporates the installation of a 20mm drainage cavity and a Mineral/Cement Base Traditional Finish (Sponge Finish).

1.3. Properties

Integra Panels have the following material properties:

- Dry Density: 520kg/m³
- Compressive strength : 4mPa
- Modulus of Elasticity, E: 1800MPa
- Thermal Conductivity: 0.12 W/(mk)
- Thermal Resistivity, R: 0.29m²K/W
- Substrate Thickness: 50mm Integra panel
- Total thickness: 55 mm (min/average) coatings and substrate
- Weight: 32 kg/m² coatings and substrate, considered a Medium weight cladding in terms of NZBC3604
- Windzone: All wind zones of 3604
- Fire rating: 4 hours (100mm thick panel)

2. Building Code Compliance

If the project has a building consent then the following clauses apply.

2.1. Durability

The work covered by this part of the specification has been designed and constructed to achieve a minimum durability of 15 years.

2.2. On Going Maintenance Instructions

Provide ongoing maintenance instructions required to meet the performance requirements of the NZBC B2 Durability.

2.3. Substrate

The substrate for this Rockcote RenderSpec™ has had all the appropriate inspections carried out by a BCA representative and that it complies with the NZBC requirements. If the substrate is existing, all tests and checks have been carried out by a BCA representative or Independent assessor and that the substrate is found to be sound and stable.

3. Documents

3.1. Abbreviations

The following abbreviations are used throughout this work section:

- PPCS Proprietary Plaster Cladding System
- LRV Light Reflectance Value
- MSDS Material safety data sheet(s)
- BCA Building Control Authority
- NZBC New Zealand Building Code
- NZS New Zealand Standards
- AS/NZ Australia New Zealand Standard
- WANZ Windows Association of New Zealand

3.2. Documents Referred to

- NZS 3603 Timber structures standard
- NZS 3604 Timber framed buildings
- NZBC B2 Durability
- NZBC E2/AS1 External moisture
- AS/NZS 1170.2 Structural design actions - Wind actions
- NZS 3602 Timber and wood-based products for use in building
- NZBC E3/AS1 Internal moisture, 1.0 Prevention of fungal growth
- BRANZ Bulletin 353 Ground clearances
- BRANZ Bulletin 418 Weathertightness do's and don'ts
- BRANZ Bulletin 439 Condensation risk in walls
- WANZ WIS

3.3. Manufacturers Documents

- Rockcote Technical Resources September 2009

- Rockcote Systems Project Guide
- Resene: Total Colour System
- Rockcote TradeSpec Version 3

Copies of the above literature are available at:

Rockcote Systems
Web: www.rockcote.co.nz
Telephone: 0800 50 70 40
Resene Paints
Web: www.resene.co.nz
Telephone: 0800 RESENE (0800 737 363)

3.4. No Substitutions

Substitutions are not permitted to any specified Rockcote Systems wall cladding system. Materials and execution to Rockcote Systems specification except where varied by this specification and supported by architectural detailing.

3.5. Qualifications

Use only PPCS registered plasterers licensed to apply the Rockcote Systems exterior render systems.

4. Documentation

4.1. Finish Sample

Submit one 300 mm x 300 mm sample of the selected texture finish and colour for approval. Obtain signature of acceptance on sample and return to the Registered Plasterer.

4.2. Maintenance Instructions

Provide Rockcote Systems Maintenance Guide on or before practical completion of the contract for issuing to the building owner. Rockcote Systems Maintenance Guide to be provided on request.

4.3. Producer Statement

If the project has a building consent then a producer statement shall be compiled by the Registered Plasterer in the form as required by the BCA.

4.4. Health and Safety

Refer to the requirements of the Health and Safety in Employment Act and OSH: Guidelines for the provision of facilities and general safety in the construction industry. Supply protective clothing and equipment. Inform employees and others on site of the hazards and put into place procedures for dealing with emergencies. Obtain from Rockcote Systems the MSDS for each product. Keep sheets on site and comply with the required safety procedures.

4.5. Warranty

Warrant this system under normal environmental and use conditions against failure. Rockcote Systems system warranty.
Materials: 15 years by Rockcote Systems - Materials
Execution: 5 years by Registered Plasterer - Workmanship

4.6. Performance

Accept responsibility for the structural and weather-tight performance of the cladding installation.

4.7. OnSite Assistance

Allow to inspect the whole of the work at each stage. Determine a programme for onsite assistance including notification when each part and stage of the work is ready for inspection prior to the work commencing. Permit representatives of Rockcote Systems to inspect the work in progress and to take samples of their products from site if requested refer Rockcote Systems Project Guide.

5. Components

5.1 Rockcote MultiStop - bedding compound

- Polymer-modified, cement based dry plaster mix. Supplied in 15kg bags.

5.2 Fasteners

- AS3566 Class 4 - Hot-dip galvanised

5.3 Battens

- 40mm x 22mm VH Grade Polystyrene Battens - AS 1366 Part 3 Class H (with fire retardant).

5.4 Integra Panel

- Length : 2200mm
- Width : 600mm
- Thickness : 50mm
- Weight : 33kg

5.5 Reinforcing Mesh

- Rockcote brand - alkali resistant - red (160gsm), weave (mesh) size 5 mm x 4 mm

- Rockcote brand - alkali resistant - blue (170gsm), weave (mesh) size 8 mm x 9 mm
- Rockcote Sticky Mesh - Soft Mesh 150mm Wide

5.6 Rockcote PM100 Quick Render

- Polymer-modified cement-based dry plaster mix. Supplied in 20 kg bags

5.7 Rockcote Mineral Texture

- Polymer-modified cement-based dry plaster mix. Supplied in 20 kg bags

5.8 Rockcote Render Prime or Resene Limelock

- Rockcote Render Prime - Water based acrylic polymer dispersion tinted (optional) to the colour of Rockcote finishing coats. Supplied in 15 litre pails.
- Resene Limelock - Water based acrylic polymer dispersion. Supplied in 10 litre pails.

5.9 Resene X200 or Rockcote Armour

- Resene X200 - Acrylic reinforced waterproof membrane. Supplied in 4 and 10 litre pails. Tinted to the selected colour.
- Rockcote Armour - Acrylic-based protective finish. Supplied in 4 and 15 litre pails. Tinted to the selected colour.

5.10 PVC Flashings and Accessories

- Rockcote Standard Corner Flashing
- Rockcote Control Joint - vertical
- Rockcote Control Joint - horizontal
- Rockcote Head Soakers
- Protecto EIFS Flashing Tape
- Rockcote Starter Strip
- Rockcote EdgeSeal Flashing

5.11 Head Flashings

- Supplied by the builder for both recessed and face-fixed timber, aluminium. PVC joinery.
- For all environments - powder coated aluminium or PVC.

5.12 Sealant

- Silaflex MS or equivalent BRANZ Appraised Sealant
- Sealant must comply with WANZ requirements for adhesion to powder coated aluminium

5.13 UPVC Flashing Primer

- Rockcote MultiStop Bedding Compound mixed with diluted acrylbond resin. MultiStop Bedding Compound supplied in 15 kg bags.

6. Installation

6.1. General

- Check Building wraps/underlays and flashing tapes - Refer to Rockcote TradeSpec™ document 1.1
- Design Information - Refer to Rockcote TradeSpec™ document 1.2
- Check Joinery - Refer to Rockcote TradeSpec™ document 1.3
- Check Timber Framing - Refer to Rockcote TradeSpec™ document 2.1
- Control Joints - Refer to Rockcote TradeSpec™ document 1.4
- Maintenance - Refer to Rockcote TradeSpec™ document 1.7

6.2. Substrates

- Cavity and Batten installation - Refer to Rockcote TradeSpec™ document 2.5
- Fastening Integra Panels - to timber frame - Refer to Rockcote TradeSpec™ 2.7
- Rockcote MultiStop Substrate Patching - Refer to Rockcote TradeSpec™ document 4.10
- Check and Prepare Integra Panels - Refer to Rockcote TradeSpec™ 2.11

6.3. Flashings & Accessories

- Rockcote Flashings - Refer to Rockcote TradeSpec™ document 3.1
- Builder Supplied Flashings - Refer to Rockcote TradeSpec™ document 3.2
- Sealants - Refer to Rockcote TradeSpec™ document 3.4
- Adhesives- Refer to Rockcote TradeSpec™ document 3.5
- Expanding Foams - Refer to Rockcote TradeSpec™ document 3.6
- Butyl Based Flashing Tapes - Refer to Rockcote TradeSpec™ document 3.9
- Polystyrene feature moulding installation - Refer to Rockcote TradeSpec™ document 3.10 (optional)

6.4. Applying Plaster

- General Render Information - Refer to Rockcote TradeSpec™ document 4.1
- Base Coat - Refer to Rockcote TradeSpec™ document 4.2
- Mesh Installation - Refer to Rockcote TradeSpec™ document 4.3
- Levelling Coat - Refer to Rockcote TradeSpec™ document 4.4

6.5. Sealing & Finishing

- General Finish Coat Information- Refer to Rockcote TradeSpec™ document 5.1
- Mineral Texture Application - Refer to Rockcote TradeSpec™ document 5.6
- Sealer Application - Refer to Rockcote TradeSpec™ document 5.3
- 2 x coats Rockcote Armour Application - Refer to Rockcote TradeSpec™ document 5.7

or

- 2 x coats Resene X200 Application - Refer to Rockcote TradeSpec™ 5.8
- Cleaning Up - Refer to Rockcote TradeSpec™ document 5.10

7. Cleaning

Remove debris, unused materials and elements from the site relating to the plaster system application. Replace damaged, cracked or marked elements. Leave the whole of this work to the required standard.

8. Final Onsite Assistance

Final Onsite Assistance by Rockcote Systems Registered plasterer and Rockcote project assessor of the entire finished cladding to take place immediately after completion of the wall cladding work and any defects or subsequent damage made good immediately.

Important:

This specification must be read in conjunction with the Rockcote Systems technical drawings.

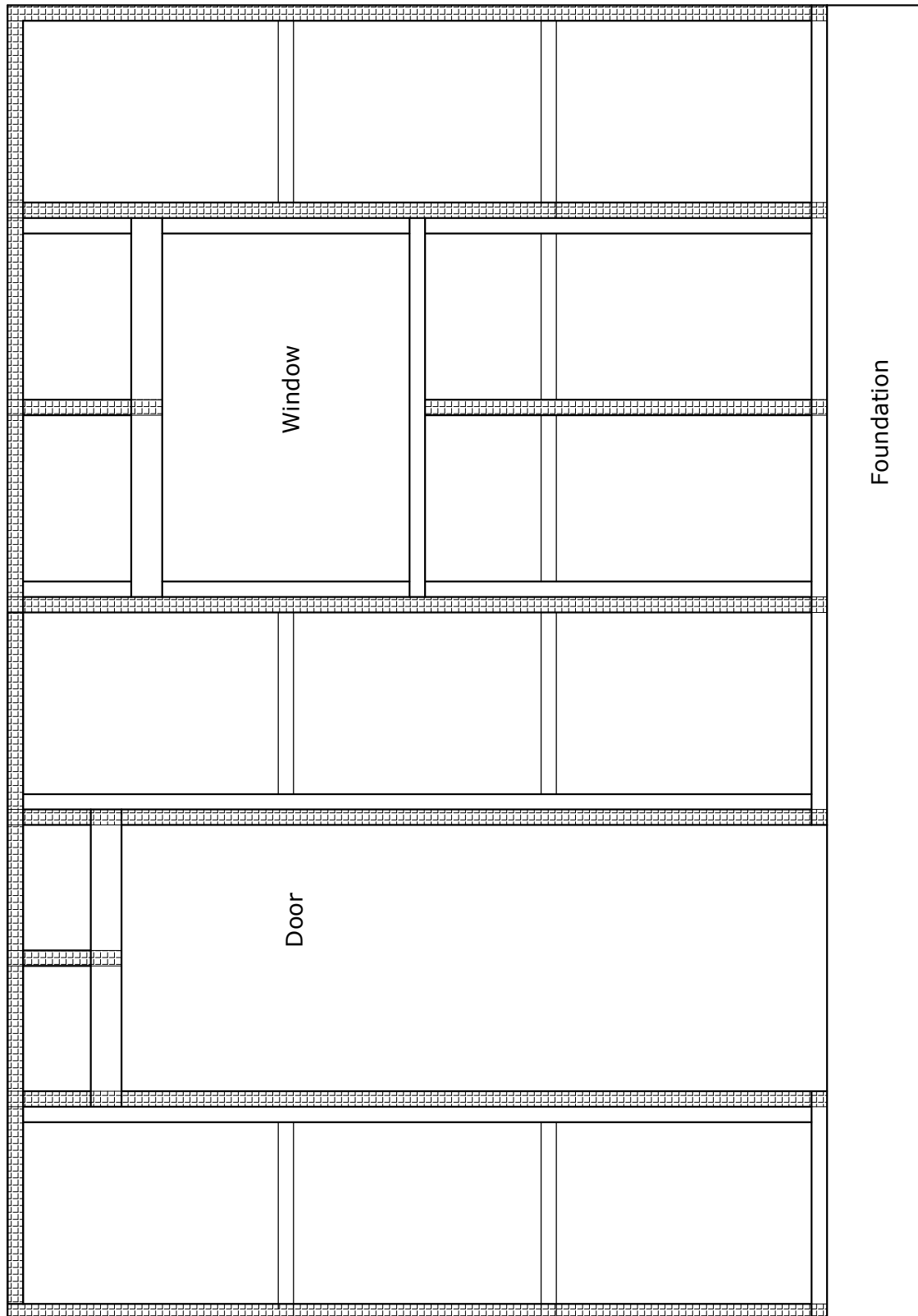
No alteration to the Rockcote RenderSpec[™] is permitted.

This Rockcote RenderSpec[™] must be read in conjunction with Rockcote TradeSpec[™] documents version 3

Integra Cavity Plus Plaster Cladding System Technical Drawings

Sheet #	Drawing Description
01	Batten Layout (600mm Studs)
02	Foundation
02	Recessed Foundation – Option 1
03	External Corner
04	Internal Corner
05	Window Sill
06	Window Jamb
07	Window Head
08	Soffit
09	Roof Apron
10	Vertical Control Joint
11	Horizontal Control Joint
13	Metal Parapet Capping

Further details are available on our website www.rockcote.co.nz



Rockcote TradeSpec™ and Rockcote RenderSpec™ are Registered Trademarks, both Documents are available on the Rockcote Website

ROCKCOTE
systems
A Resene Group Company

CONFIDENTIALITY: No part of this publication may be reproduced or transmitted other than the intended use by Rockcote Resene Ltd without written consent from the author.

System
Integra Cavity Plus Render System

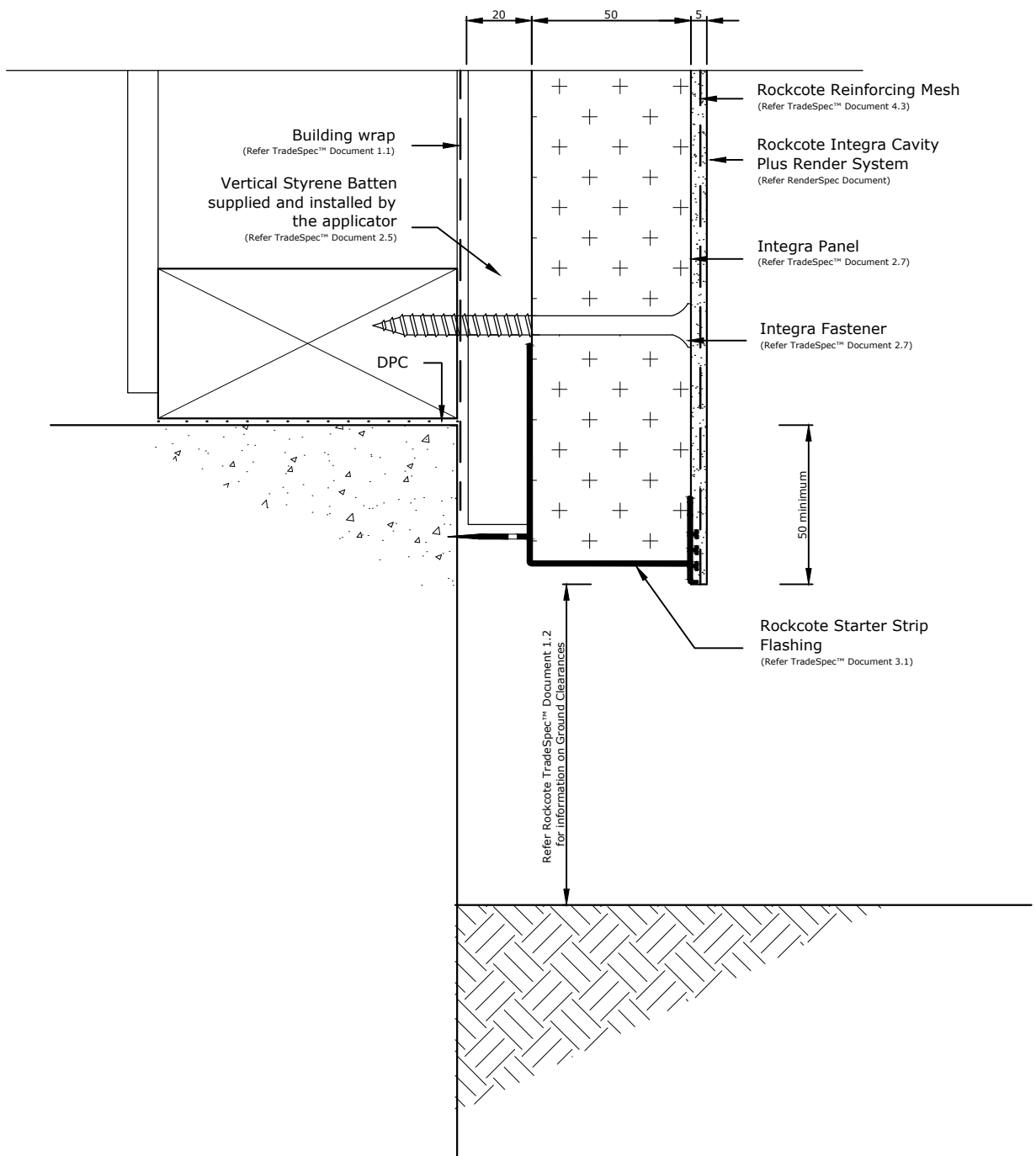
Substrate
Integra Panel

Drawing Name
Batten Layout (600mm Centres)

Scale
1 : 2 @ A4

Date
15 September 2010

Sheet
01



Refer Rockcote TradeSpec™ Document 1.2 for information on Ground Clearances

Rockcote TradeSpec™ and Rockcote RenderSpec™ are Registered Trademarks, both Documents are available on the Rockcote Website

ROCKCOTE
systems
A Bunnings Group Company

System
Integra Cavity Plus Render System

Scale
1 : 2 @ A4

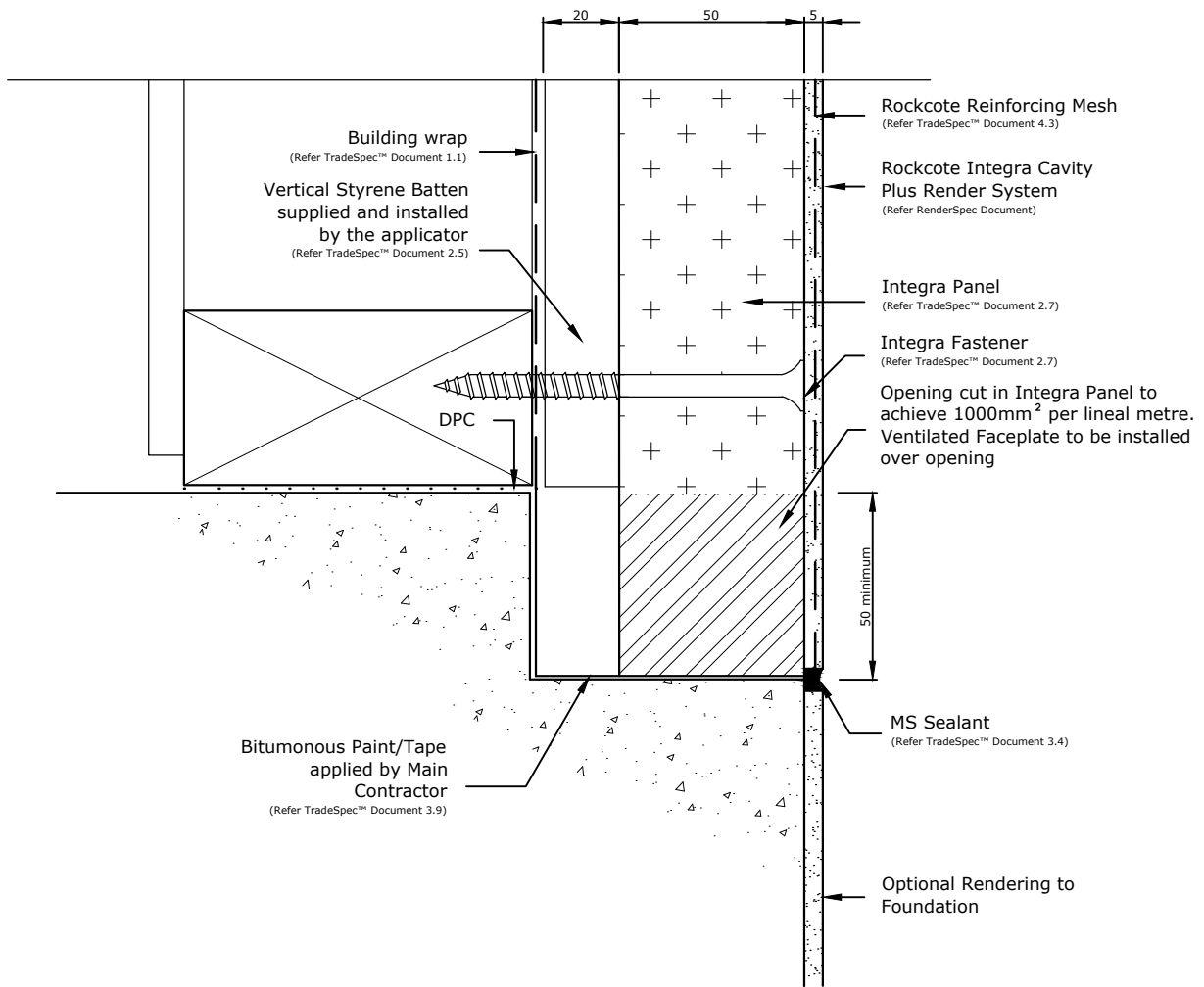
Substrate
Integra Panel

Date
14 September 2010

Drawing Name
Foundation

Sheet
02

CONFIDENTIALITY: No part of this publication may be reproduced or transmitted other than the intended use by Rockcote Resene Ltd without written consent from the author.



Refer Rockcote TradeSpec™ Document 1.2 for information on Ground Clearances

Rockcote TradeSpec™ and Rockcote RenderSpec™ are Registered Trademarks, both Documents are available on the Rockcote Website



CONFIDENTIALITY: No part of this publication may be reproduced or transmitted other than the intended use by Rockcote Resene Ltd without written consent from the author.

System
Integra Cavity Plus Render System

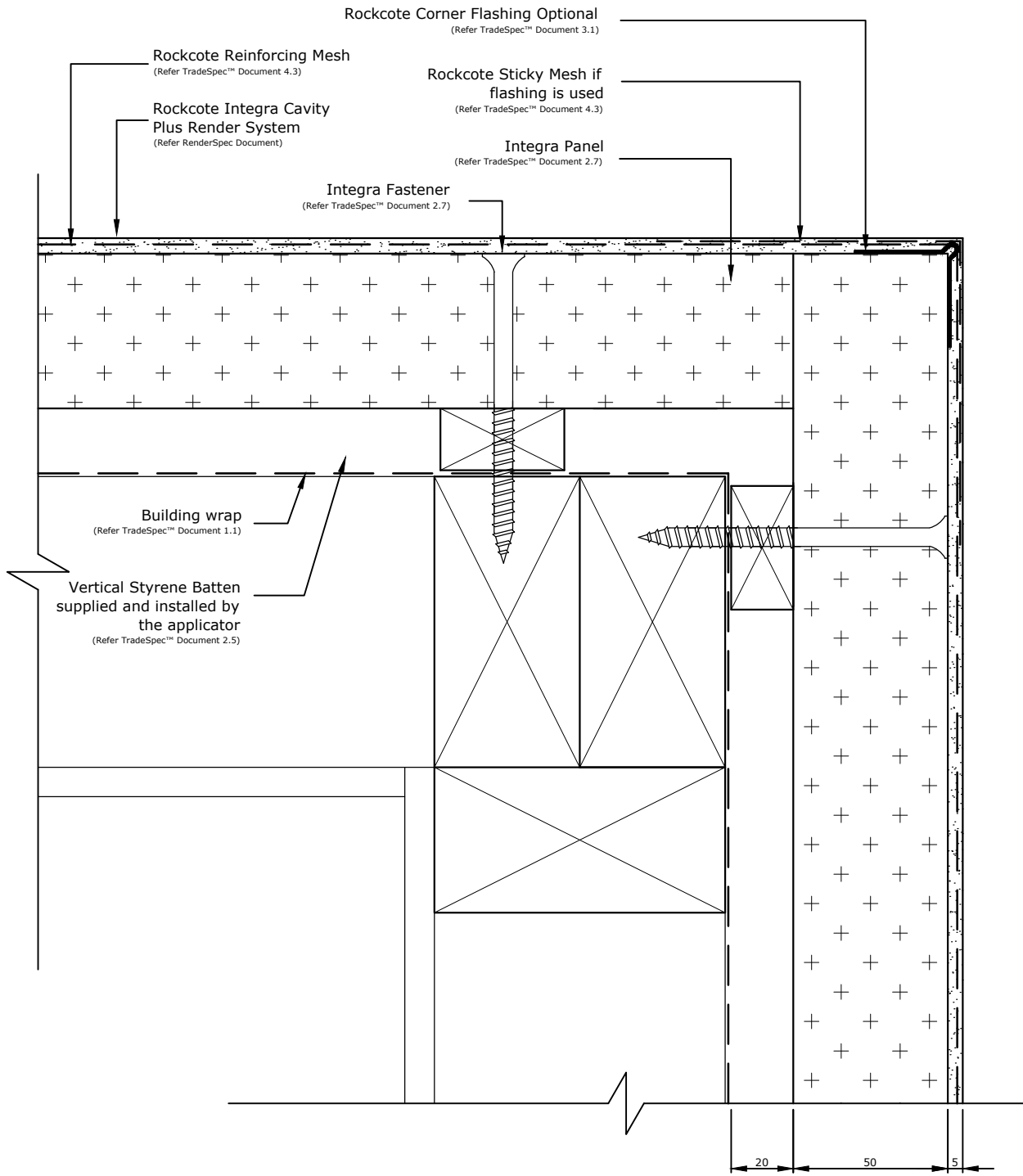
Substrate
Integra Panel

Drawing Name
Recessed Foundation - Option 1

Scale
1 : 2 @ A4

Date
14 September 2010

Sheet
02



Rockcote TradeSpec™ and Rockcote RenderSpec™ are Registered Trademarks, both Documents are available on the Rockcote Website



CONFIDENTIALITY: No part of this publication may be reproduced or transmitted other than the intended use by Rockcote Resene Ltd without written consent from the author.

System
Integra Cavity Plus Render System

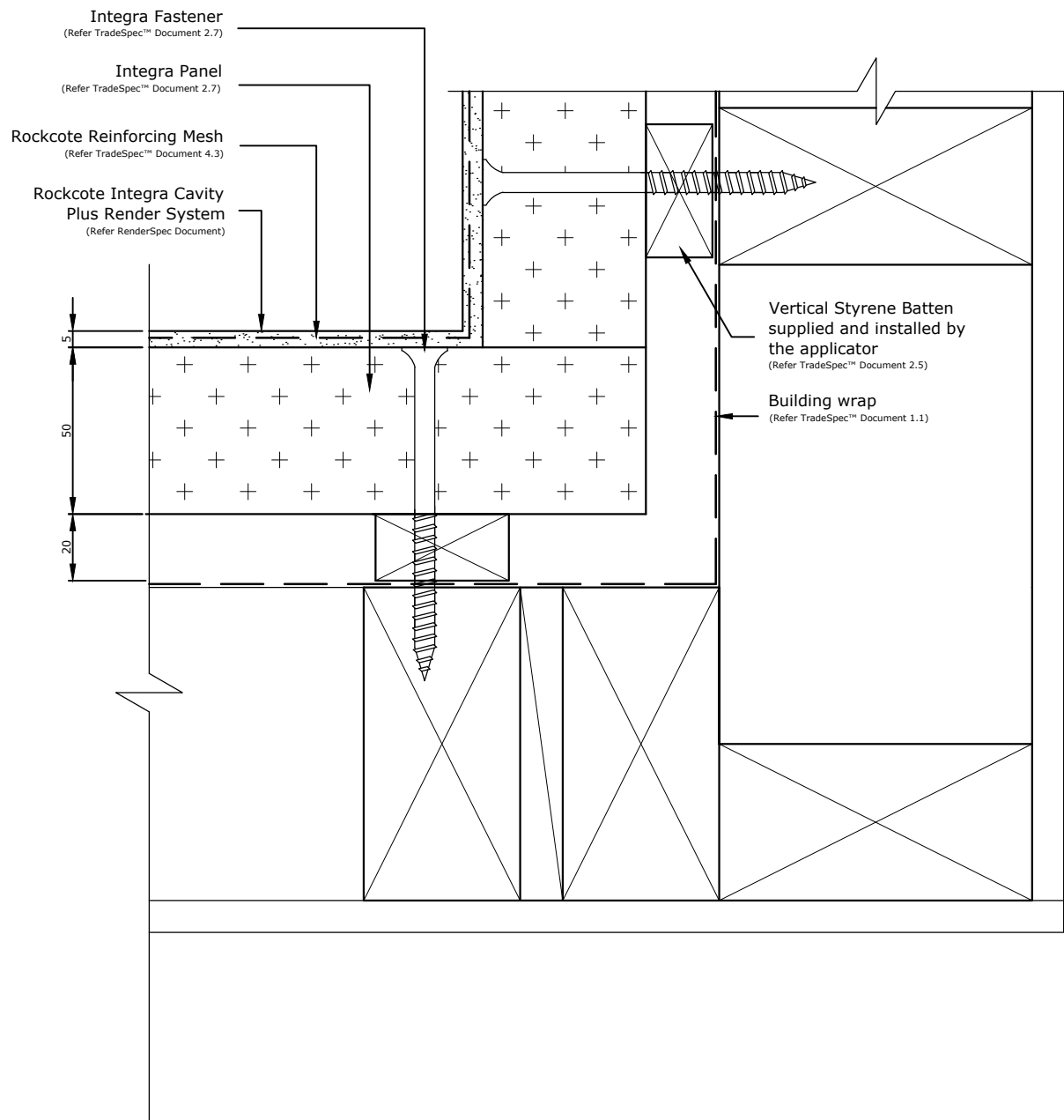
Substrate
Integra Panel

Drawing Name
External Corner

Scale
1 : 2 @ A4

Date
14 September 2010

Sheet
03



Mesh to be wrapped continuously around the internal corner, if there is a break in the mesh then an additional layer of Rockcote Sticky Mesh must be used

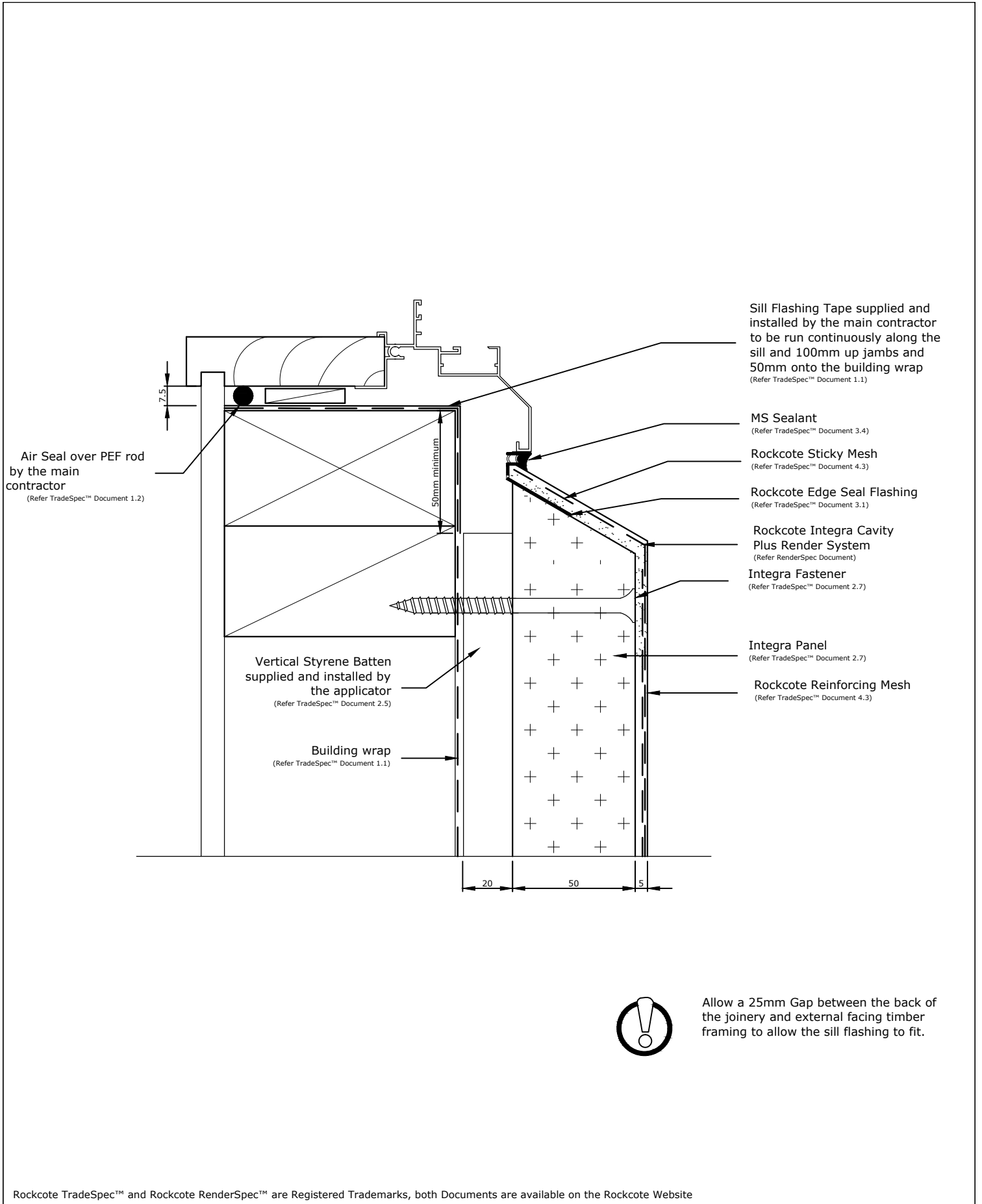
Rockcote TradeSpec™ and Rockcote RenderSpec™ are Registered Trademarks, both Documents are available on the Rockcote Website

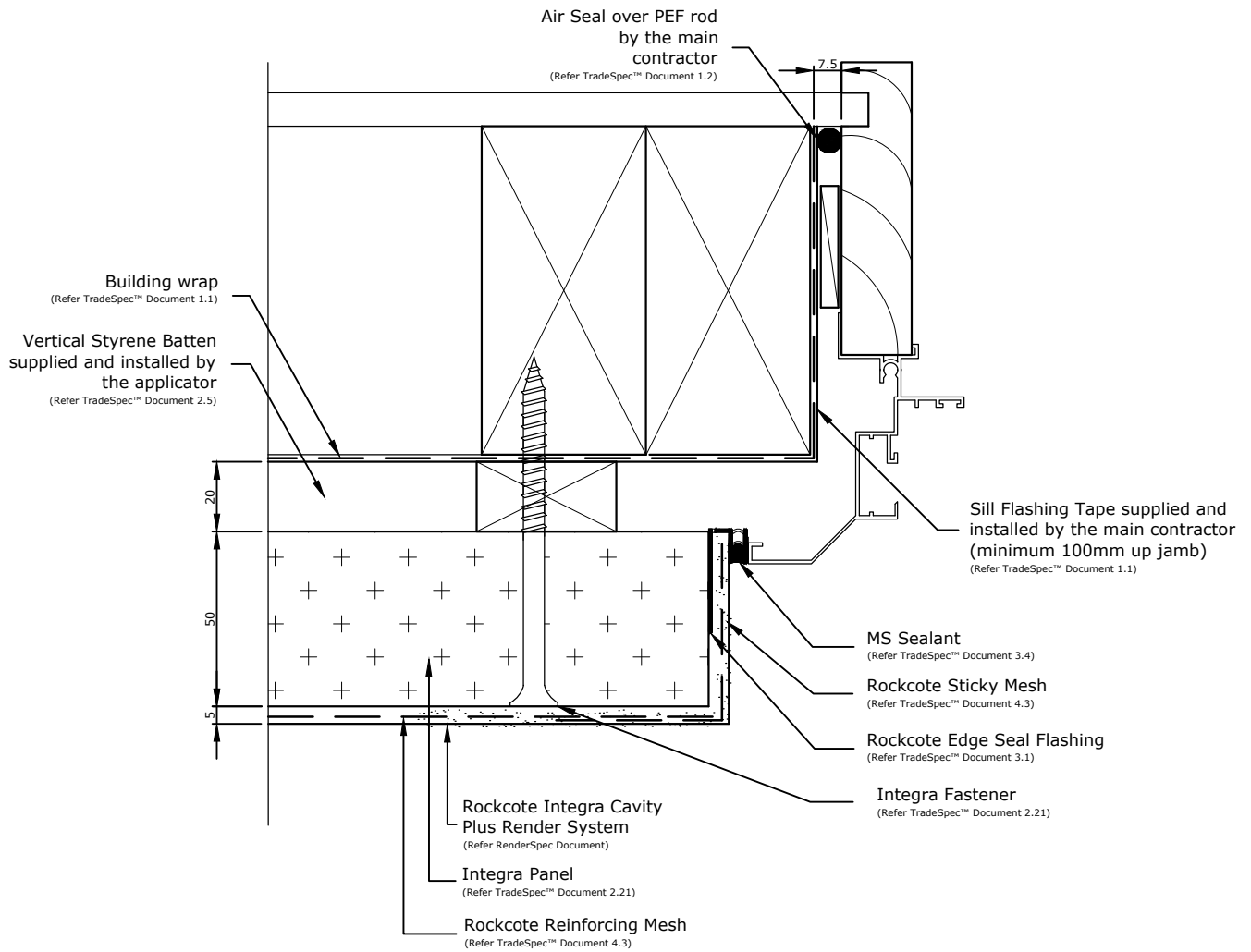


CONFIDENTIALITY: No part of this publication may be reproduced or transmitted other than the intended use by Rockcote Resene Ltd without written consent from the author.

System
Integra Cavity Plus Render System
 Substrate
Integra Panel
 Drawing Name
Internal Corner

Scale
1 : 2 @ A4
 Date
14 September 2010
 Sheet
04





Allow a 25mm Gap between the back of the joinery and external facing timber framing to allow the jamb flashing to fit.

Rockcote TradeSpec™ and Rockcote RenderSpec™ are Registered Trademarks, both Documents are available on the Rockcote Website

ROCKCOTE
systems
A Bunnings Group Company

CONFIDENTIALITY: No part of this publication may be reproduced or transmitted other than the intended use by Rockcote Resene Ltd without written consent from the author.

System
Integra Cavity Plus Render System

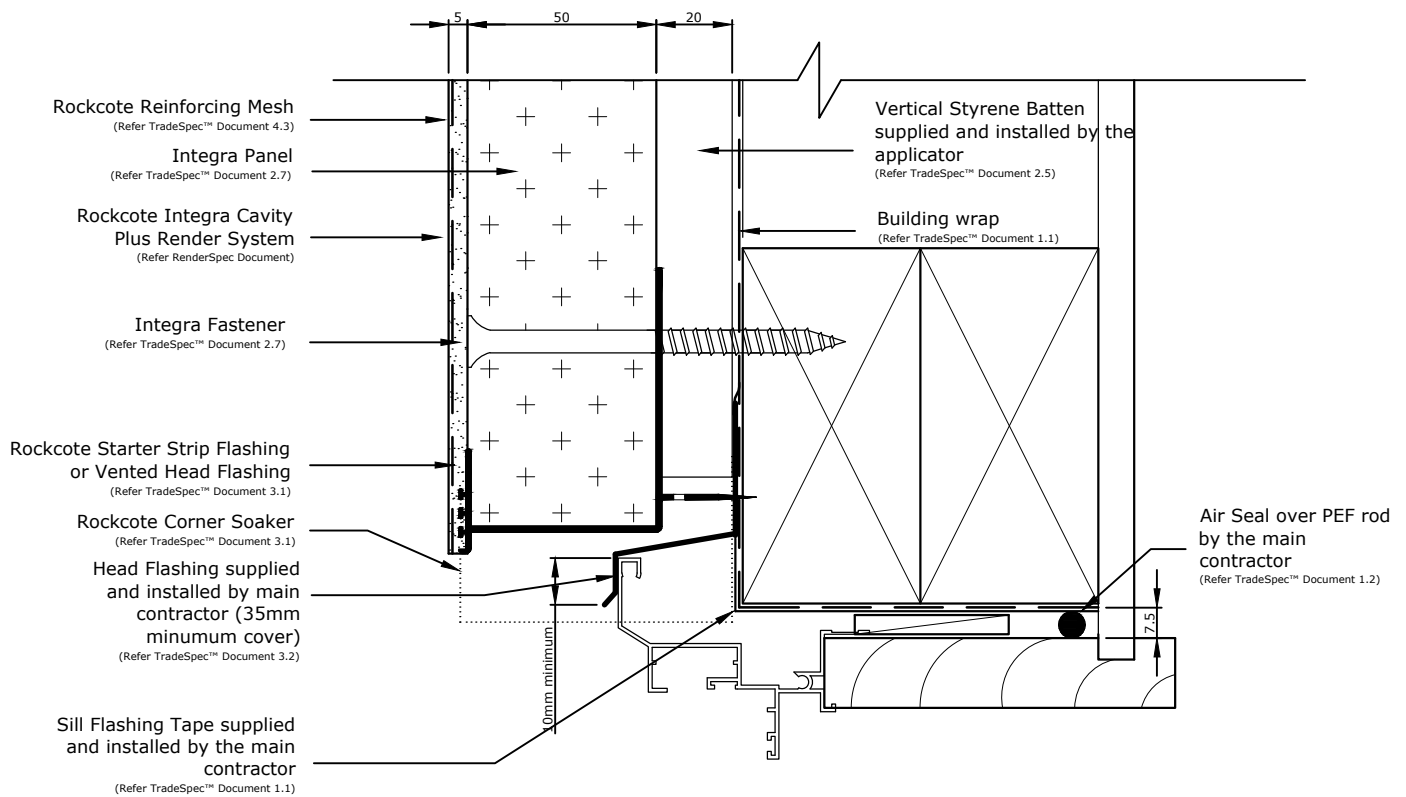
Substrate
Integra Panel

Drawing Name
Window Jamb

Scale
1 : 2 @ A4

Date
14 September 2010

Sheet
06



5mm clearance must be maintained between the starter strip and the head flashing

Head flashing must be taped to the Building Wrap by the main contractor/window installer

Head Flashing to have a minimum 15° fall

Rockcote TradeSpec™ and Rockcote RenderSpec™ are Registered Trademarks, both Documents are available on the Rockcote Website

ROCKCOTE
systems
A Resene Group Company

System
Integra Cavity Plus Render System

Scale
1 : 2 @ A4

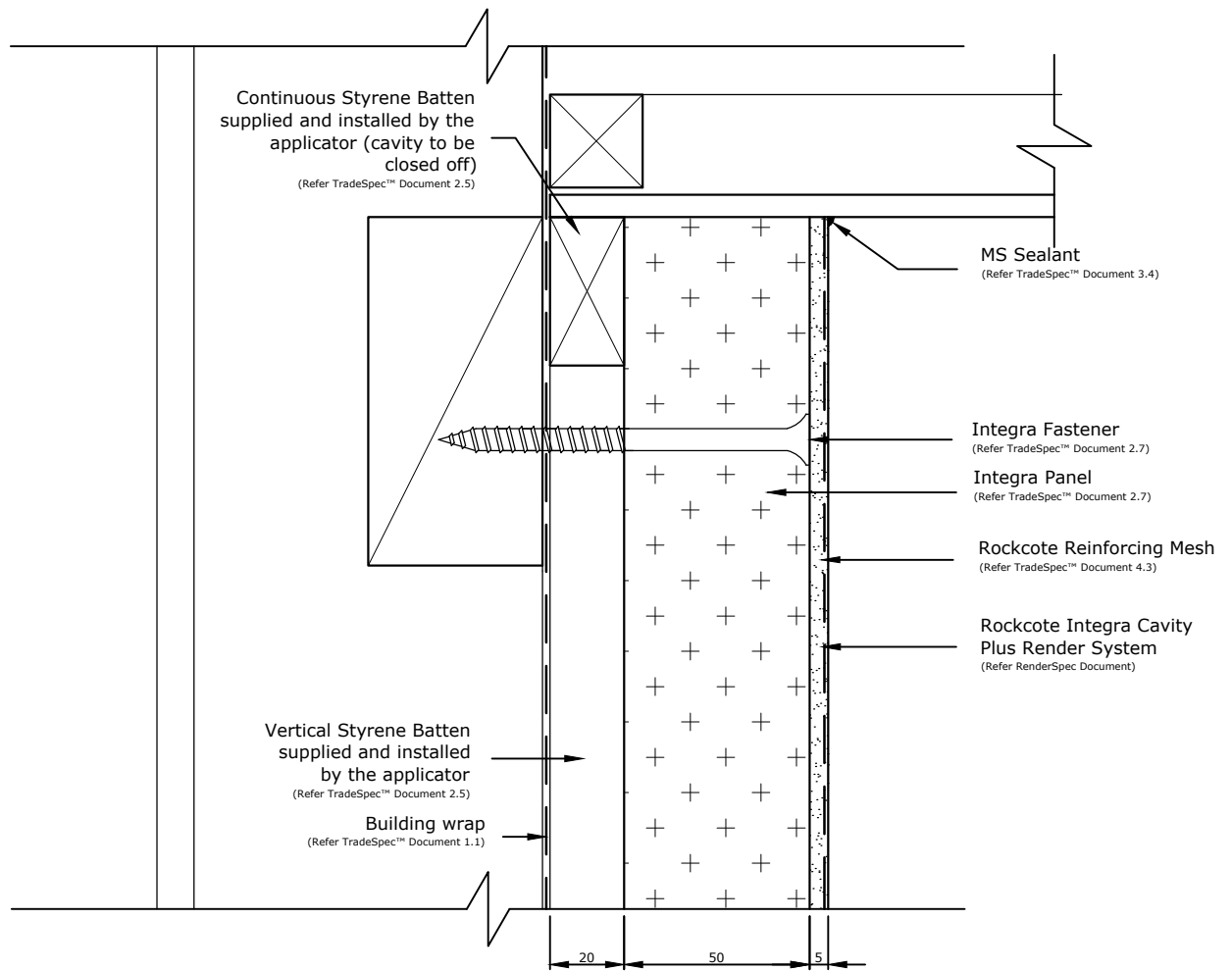
Substrate
Integra Panel

Date
14 September 2010

Drawing Name
Window Head - Option 1

Sheet
07

CONFIDENTIALITY: No part of this publication may be reproduced or transmitted other than the intended use by Rockcote Resene Ltd without written consent from the author.



Rockcote TradeSpec™ and Rockcote RenderSpec™ are Registered Trademarks, both Documents are available on the Rockcote Website



CONFIDENTIALITY: No part of this publication may be reproduced or transmitted other than the intended use by Rockcote Resene Ltd without written consent from the author.

System
Integra Cavity Plus Render System

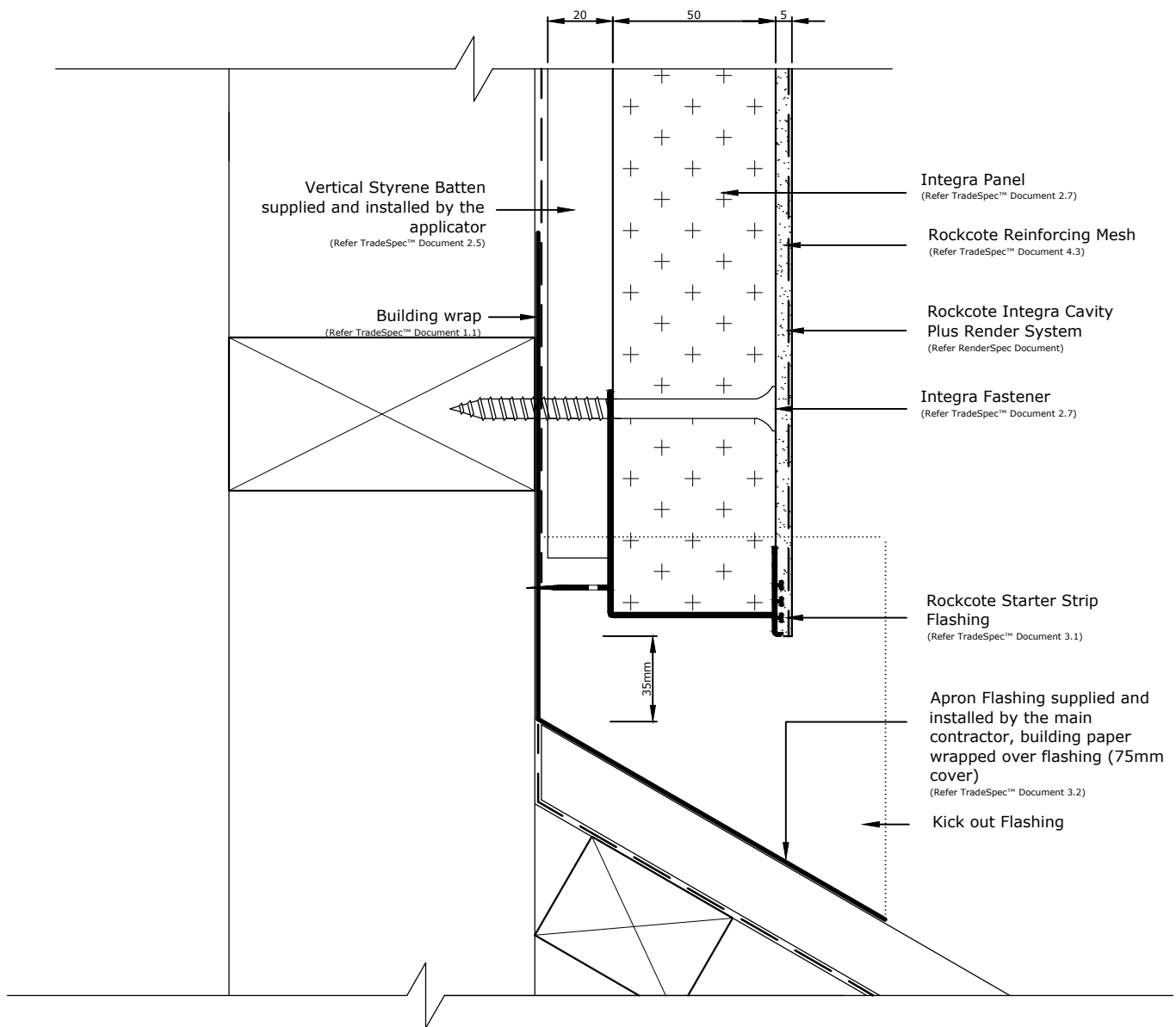
Substrate
Integra Panel

Drawing Name
Soffit

Scale
1 : 2 @ A4

Date
14 September 2010

Sheet
08



Vertical Styrene Batten
supplied and installed by the
applicator
(Refer TradeSpec™ Document 2.5)

Building wrap
(Refer TradeSpec™ Document 1.1)

Integra Panel
(Refer TradeSpec™ Document 2.7)

Rockcote Reinforcing Mesh
(Refer TradeSpec™ Document 4.3)

Rockcote Integra Cavity
Plus Render System
(Refer RenderSpec Document)

Integra Fastener
(Refer TradeSpec™ Document 2.7)

Rockcote Starter Strip
Flashing
(Refer TradeSpec™ Document 3.1)

Apron Flashing supplied and
installed by the main
contractor, building paper
wrapped over flashing (75mm
cover)
(Refer TradeSpec™ Document 3.2)

Kick out Flashing



Refer Rockcote TradeSpec™
Document 1.2 for information on Roof
Clearances

Metal flashing must be taped to the
Building Wrap or covered with a
second layer of wrap by the main
contractor/window installer

Rockcote TradeSpec™ and Rockcote RenderSpec™ are Registered Trademarks, both Documents are available on the Rockcote Website



System
Integra Cavity Plus Render System

Scale
1 : 2 @ A4

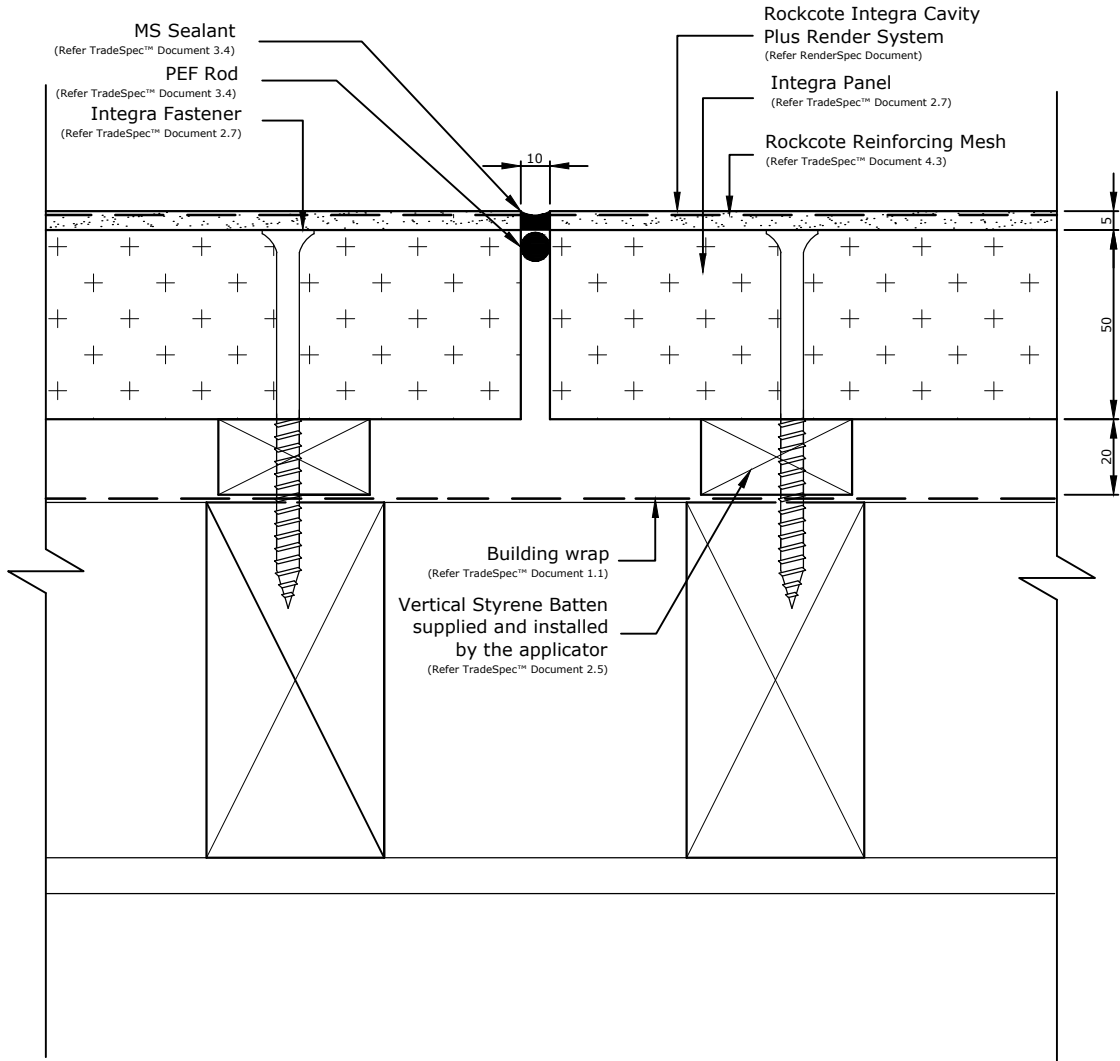
Substrate
Integra Panel

Date
14 September 2010

Drawing Name
Roof Apron

Sheet
09

CONFIDENTIALITY: No part of this publication may be reproduced or transmitted other than the intended use by Rockcote Resene Ltd without written consent from the author.



All Control Joint spacings and setouts are the responsibility of the Designer, for suggested locations refer to Rockcote TradeSpec™ Document 1.4

Rockcote TradeSpec™ and Rockcote RenderSpec™ are Registered Trademarks, both Documents are available on the Rockcote Website

ROCKCOTE
systems
A Resene Group Company

System
Integra Cavity Plus Render System

Scale
1 : 2 @ A4

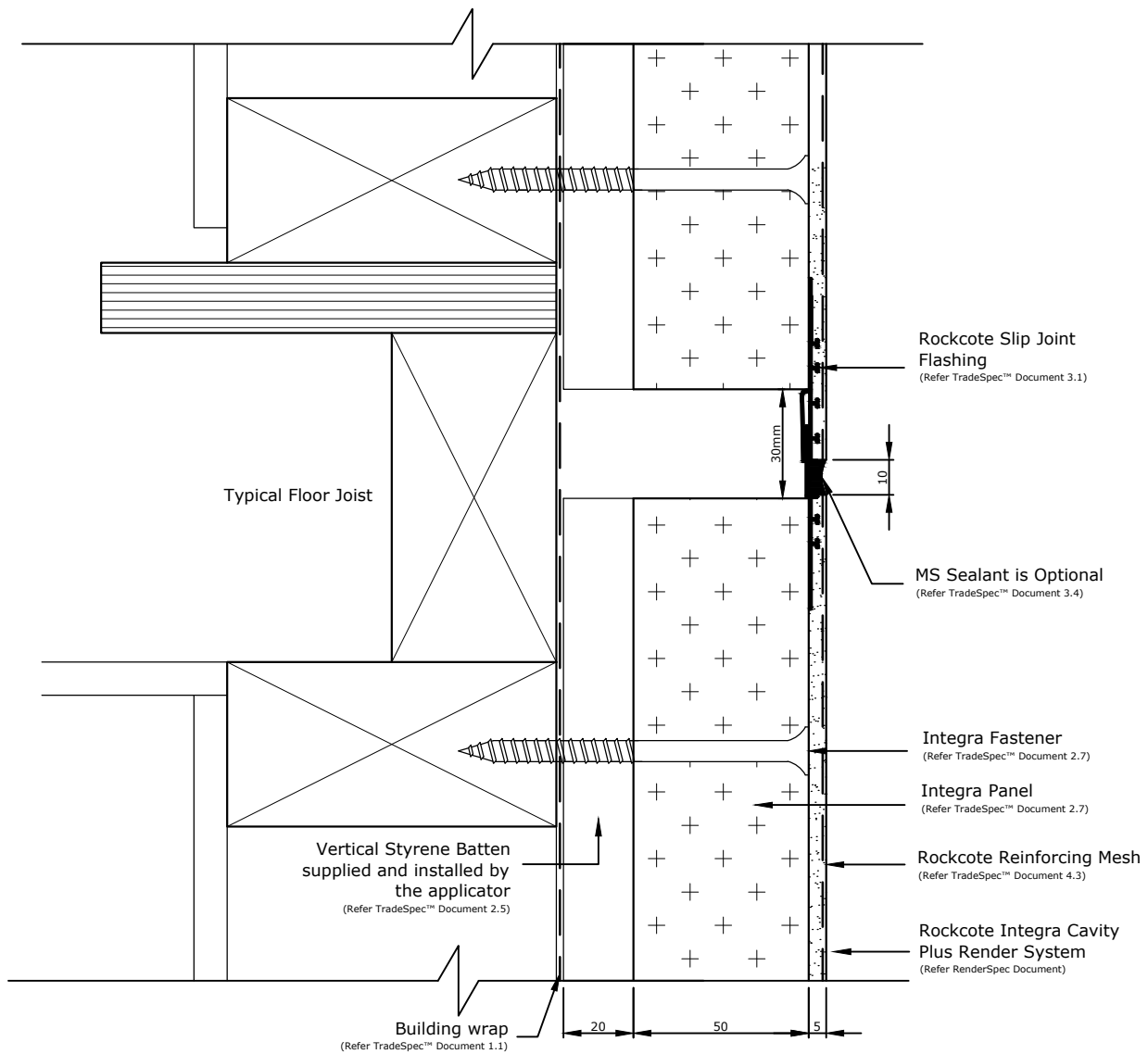
Substrate
Integra Panel

Date
14 September 2010

Drawing Name
Vertical Control Joint - Option 1

Sheet
10

CONFIDENTIALITY: No part of this publication may be reproduced or transmitted other than the intended use by Rockcote Resene Ltd without written consent from the author.



All Control Joint spacings and setouts are the responsibility of the Designer, for suggested locations refer to Rockcote TradeSpec™ Document 1.4

Please note that there should be no fixings into the floor joists, the substrate should be left floating over this point.

Rockcote TradeSpec™ and Rockcote RenderSpec™ are Registered Trademarks, both Documents are available on the Rockcote Website

ROCKCOTE
systems
A Resene Group Company

CONFIDENTIALITY: No part of this publication may be reproduced or transmitted other than the intended use by Rockcote Resene Ltd without written consent from the author.

System
Integra Cavity Plus Render System

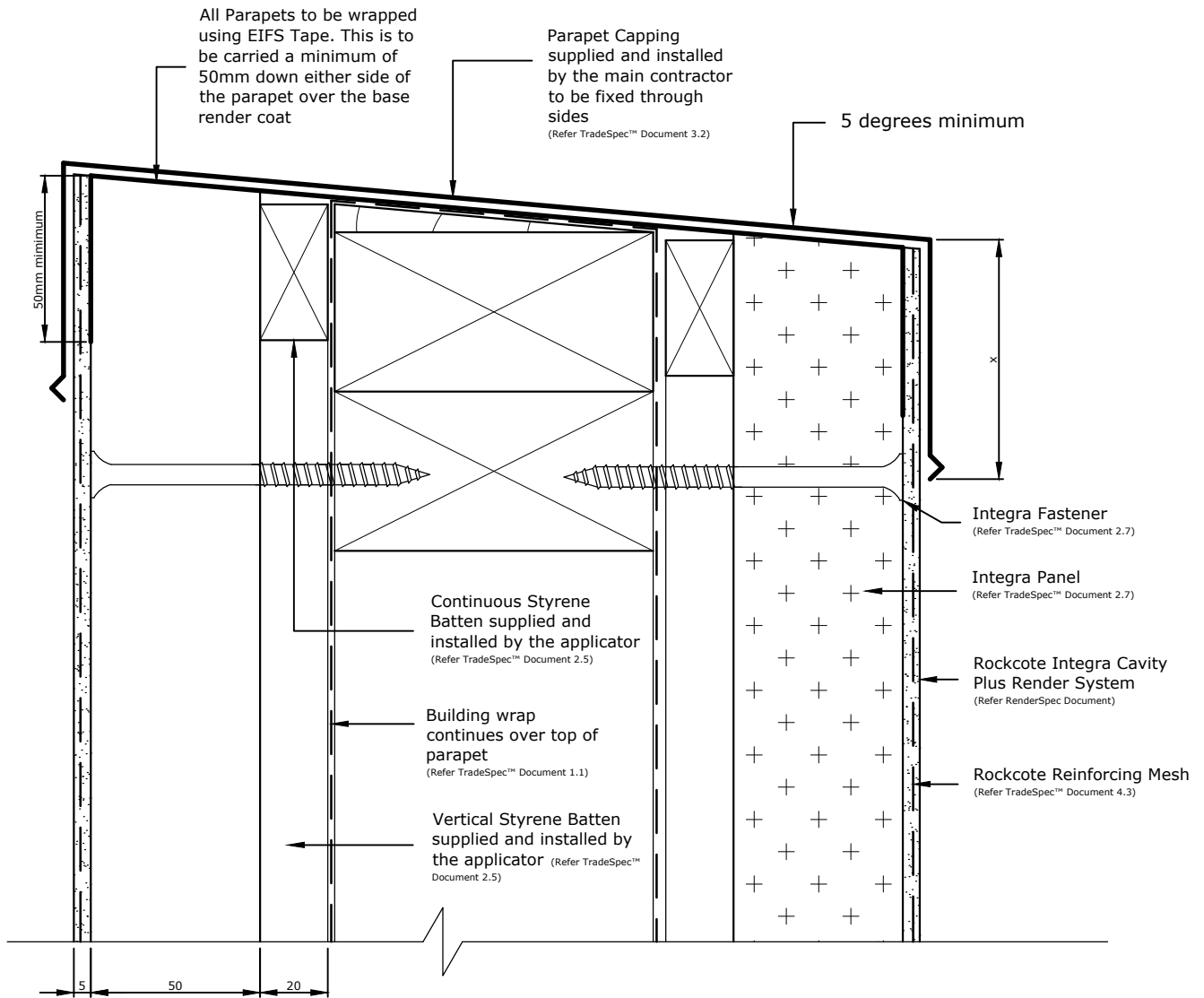
Substrate
Integra Panel

Drawing Name
Control Joint - Horizontal

Scale
1 : 2 @ A4

Date
14 September 2010

Sheet
11



Parapet capping (shown as x) Refer to NZBC E2/AS1 Table 7, 50mm in Low, Medium, High wind zones. 70mm in Very High wind zones.

Rockcote TradeSpec™ and Rockcote RenderSpec™ are Registered Trademarks, both Documents are available on the Rockcote Website

ROCKCOTE
systems
A Resene Group Company

CONFIDENTIALITY: No part of this publication may be reproduced or transmitted other than the intended use by Rockcote Resene Ltd without written consent from the author.

System
Integra Cavity Plus Render System

Substrate
Integra Panel

Drawing Name
Metal Parapet Capping

Scale
1 : 2 @ A4

Date
14 September 2010

Sheet
13

ROCKCOTE

s y s t e m s

Rockcote Resene Ltd

Head Office

PO Box 8313,

77 Wrights Road Christchurch

Telephone: 03 338 6328

Fax: 03 338 6819

New Zealand

Auckland

Telephone 09 259 2732

Fax 09 259 2713

Wellington

Telephone 04 567 3576

Fax 04 567 3578

The Rockcote network is New Zealand wide from Keri Keri in the North to Invercargill in the south. Call our Onsite Assist 0800 50 70 40 for your nearest consultant or visit our web site:

<http://www.rockcote.co.nz>

ROCKCOTE

Onsite Assist
0800 50 70 40

We offer our expertise not only to assist applicators but designers and home owners alike.

MyHomeTM
maintenance guide

Offers home owners advice on how to get the very best life and continued good looks from their Rockcote plaster cladding system.

A Resene Group Company.