

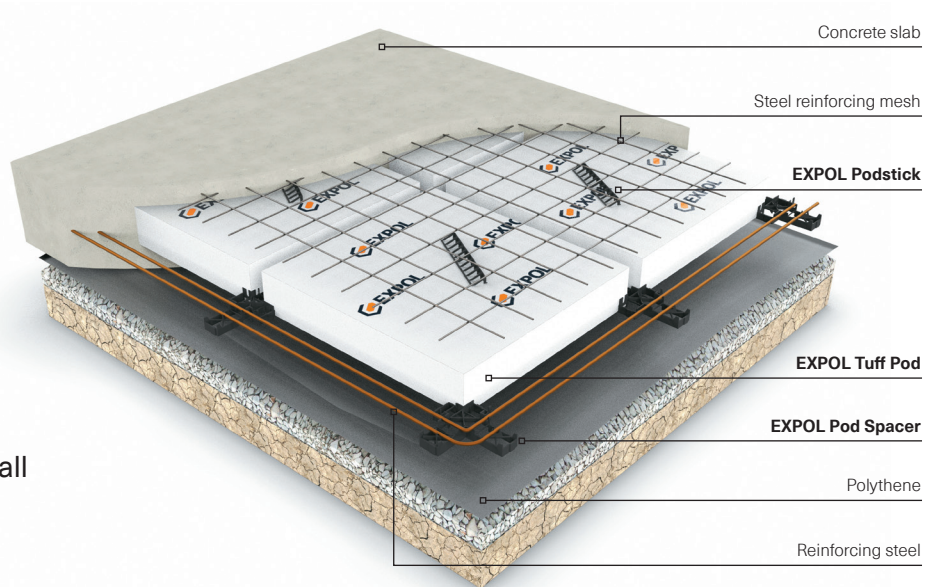
**SOLID INSULATION AND LIGHTWEIGHT
POLYSTYRENE CONSTRUCTION SOLUTIONS**



POD FLOOR SYSTEMS

EXPOL manufactures a variety of polystyrene **Tuff Pods** which contain recycled material and are suitable for all raft / floating floor slab systems throughout New Zealand.

EXPOL Tuff Pods are a component used to create 100mm concrete ribs throughout the floor, providing additional strength and superior insulating qualities.



THE PRODUCTS

EXPOL Tuff Pods are manufactured from standard Expanded Polystyrene material. Tuff pods are shaped moulded and incorporate a waffle design.

To suit the many different pod floor systems, EXPOL supplies a variety of sizes to suit the specific design and contains recycled content. EXPOL Tuff Pod off cuts can be recycled.

SYSTEM COMPONENTS

EXPOL supplies spacers to align the Tuff Pods, and PODSTICKS for mesh support.

EXPOL's range of available components is listed below:

EXPOL 100mm Spacer

Only suitable for 220mm PODS for internal ribs.



EXPOL 300mm Spacer

Only suitable for 220mm PODS for slab edge beam and thickenings.



EXPOL PODSTICK

Used as an alternative to Mesh / Bar Chairs. Provides more support for steel mesh over polystyrene.

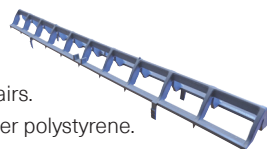
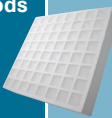
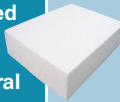


Table 7.1

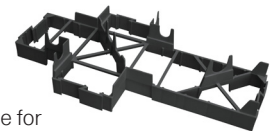
PRODUCT OPTIONS & SIZES

	Length (mm)	Width (mm)	Thickness (mm)
Expol Tuff Pods Moulded 	1100	1100	220
	1100	1100	300
Solid Pods made from Recycled Material - Non Structural 	1200	1200	200
	1200	1200	300
	1800	1200	200

UNIMAX Spacer

The spacer sits on the ground between the pods and is suitable for use with any size Tuff Pod. The spacer cleverly clips together to form any size spacing required.

EXPOL Unimax spacers can be used in conjunction with any other spacer type.



EXPOL Centre Spacer

Used internally and externally throughout the Pod floor.



EXPOL Clip on Spacer

This spacer clips onto the centre spacer for edge beams and internal thickenings.



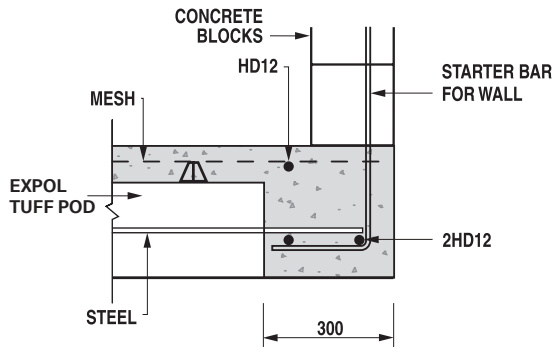


Fig 7.4 **Brick Veneer**

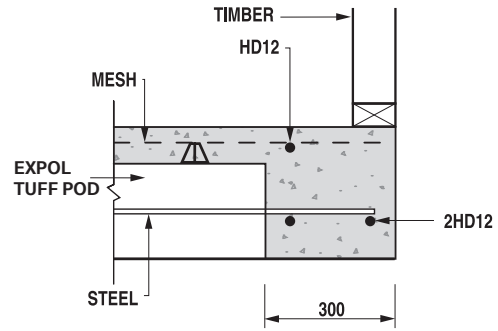


Fig 7.5 **300mm Rib**

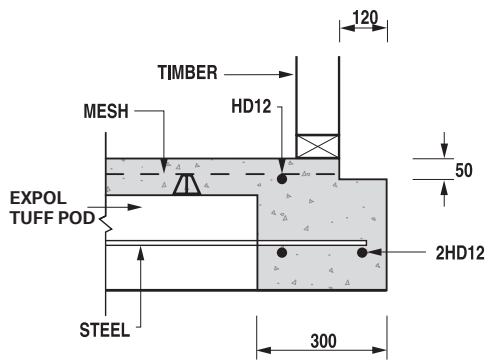
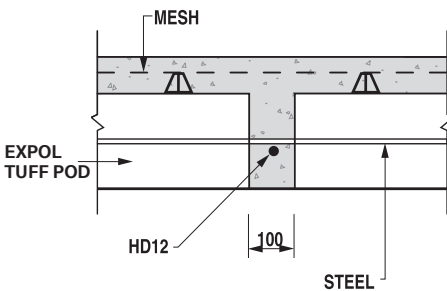
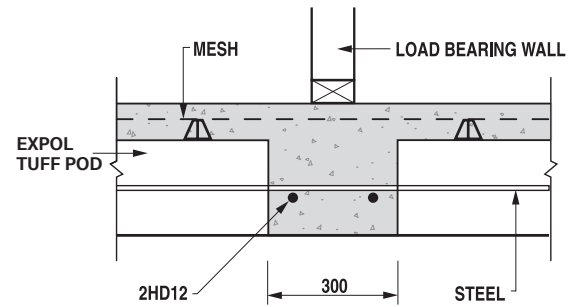


Fig 7.6 **100mm Rib**



FURTHER INFORMATION

Scan the code to access the EXPOL Concrete Floor Solutions Guide



For further, detailed information on all products refer page 38 & 39 or contact EXPOL 0800 86 33 73.

For Expanded Polystyrene Densities and Colour Coding refer page 39.

MANUFACTURING STANDARD

All products and grades of Expanded Polystyrene supplied by EXPOL for pod floors comply with manufacturing standard AS 1366 Part 3 1992.

Contact EXPOL
T: 0800 86 33 73

Sales
E: sales@expol.co.nz

Quotes / Technical
E: tech@expol.co.nz

EXPOL Product Training
www.expolexpert.co.nz

EXPOL and the Environment
www.expolearth.co.nz

EXPOL
www.EXPOL.co.nz

