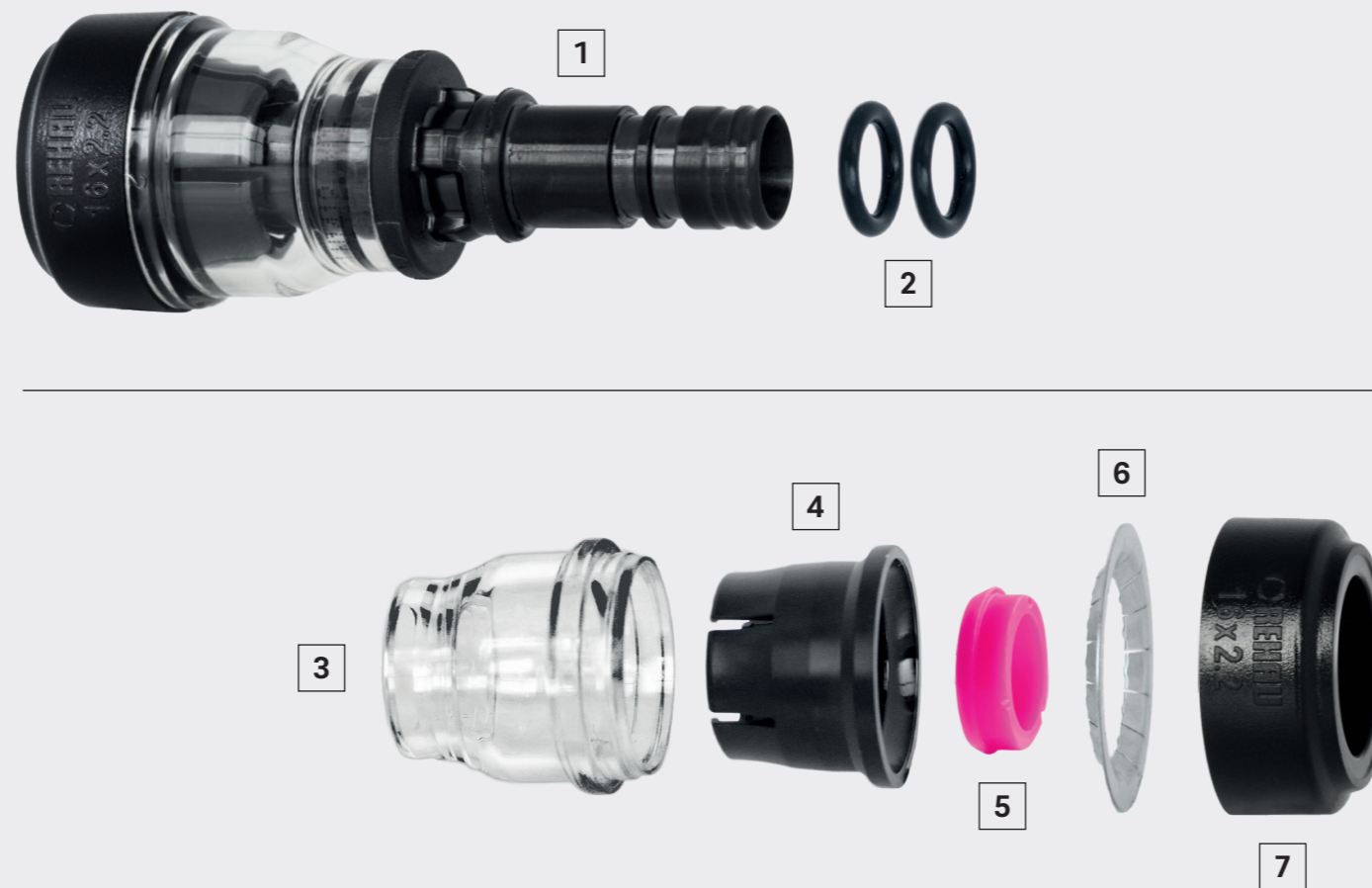


PUSH
PUSH
PUSH
PUSH
PUSH
PUSH

Fitting Components

PINC
Push In Connect



1. Fitting body

Made of temperature and chemical resistant engineered polymer, respectively REHAU's signature highly dezincification resistant brass.

2. Seal rings

2x EPDM seal rings for extra security and enhanced leak tightness.

3. Clear housing

Glass fibre reinforced transparent Grilamid. See what's going on inside from all directions.

4. Inner collet

Tough thermo-plastic polymer that provides both stability and strength to the fitting.

5. Guide ring

Dual functionality and the heart of the design - ensures smooth pipe insertion and provides visual confirmation of completed connection.

6. Grab ring

Stainless Steel toothed ring capable of holding up to 2.5 tonnes pull-out force.

7. End cap

Glass fibre reinforced black Grilamid. Securely holds all components in place.

REHAU Ltd

12 Allens Road, East Tamaki, Auckland 2013, New Zealand
Tel: +64 9 272 2264 | Fax: +64 9 272 2265
Email: sales.nz@rehau.com
www.rehau.co.nz

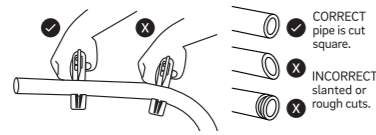


PUSH
PUSH
PUSH
PUSH
PUSH
PUSH

How to make a PINC™ connection

Step 1

- Cut the pipe square using REHAU approved pipe cutters only.
- If the pipe was cut improperly, re-cut the pipe to ensure a square and burr-free cut.



Step 2

Ensure the pipe end is straight and pipe end and fitting are free from any foreign material (e.g. lubricant, adhesive or tape).



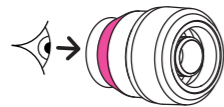
Step 3

Push the pipe into the PINC™ fitting until it stops, and at the same time, listen for the audible "CLICK".



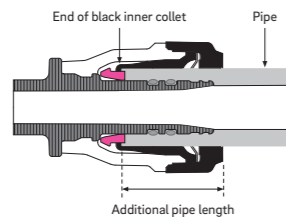
Step 4

- Verify that the pink guide ring is fully visible.
- In case the pink guide ring is not visible, complete pipe insertion. Note - avoid further pipe insertion when the system is already under water pressure. De-pressurise the system before completing pipe insertion.



Insertion depth

- When the pipe is fully inserted, the pipe end roughly aligns with the end of the black inner collet.
- The end of the black inner collet can therefore be used as a guidance for estimating the required cut length for the pipe.



Installation temperature

- Minimum installation temperature is -5 °C.
- Maximum installation temperature is +50 °C.

Handy tips

- Always pressure test system on completion and before covering the pipe or fittings as per AS/NZS 3500.
- Cover fitting ends from falling dust and debris, particularly when working (ie drilling timber) overhead.
- If the pipe is difficult to insert or does not engage, do not force the pipe. Remove and check for obstructions.
- Perform jointing only on a straight pipe section, not on a pipe bend or with pipe inserted at an angle. Avoid excessive bending stress on the connection.

Reusing jointing components

REHAU PINC™ fittings shall not be reused or detached and must be disposed.

Safety information

- Only use RAUTITAN PE-Xa pipes SDR 7.4 (platinum, red, green, lilac) and no other pipe.
- Protect RAUTITAN pipes and PINC™ fittings from contact with alcohol (e.g. Isopropanol, Ethanol, Methylated Spirits), acetic acid, grease and oil, petrolatum, primers, solvents, glues/adhesives, paint and lacquer and other harmful substances.

PINC Straight Coupling

REHAU Article Code	Size
442922 - 001	PINC NO.1 COUPLING 16-16
442923 - 001	PINC NO.1 COUPLING 20-20
442924 - 001	PINC NO.1 COUPLING 20-16

PINC Elbow 90

REHAU Article Code	Size
442925 - 001	PINC NO.12 ELBOW 90°16-16
442926 - 001	PINC NO.12 ELBOW 90°20-20

PINC Tee Piece

REHAU Article Code	Size
442917 - 001	PINC NO.24 T-PIECE 16-16-16
442918 - 001	PINC NO.24 T-PIECE 20-20-20
442919 - 001	PINC NO.25 T-PIECE 20-16-20
442920 - 001	PINC NO.26 T-PIECE 20-20-16
442921 - 001	PINC NO.27 T-PIECE 20-16-16

PINC Straight Connector Female

REHAU Article Code	Size
442932 - 001	PINC NO.2 STR CONN FI16-RP 1/2"
442933 - 001	PINC NO.2 STR CONN FI20-RP 3/4"

PINC Straight Connector Male

REHAU Article Code	Size
442928 - 001	PINC NO.3 STR CONN MI16-R 1/2"
442929 - 001	PINC NO.3 STR CONN MI16-R 3/4"
442930 - 001	PINC NO.3 STR CONN MI20-R 1/2"
442931 - 001	PINC NO.3 STR CONN MI20-R 3/4"

PINC Elbow Male Thread

REHAU Article Code	Size
442934 - 001	PINC NO.13 ELBOW MI16 - R 1/2"
442935 - 001	PINC NO.13 ELBOW MI20 - R 1/2"
442936 - 001	PINC NO.13 ELBOW MI20 - R 3/4"

PINC Elbow Female Thread

REHAU Article Code	Size
442937 - 001	PINC NO.14 ELBOW FI16 - RP 1/2"
442938 - 001	PINC NO.14 ELBOW FI20 - RP 1/2"
442939 - 001	PINC NO.14 ELBOW FI20 - RP 3/4"

PINC Elbow Female Wingback

REHAU Article Code	Size
442945 - 001	PINC NO.15 BP ELB FI16-RP 1/2"
442946 - 001	PINC NO.15 BP ELB FI16-RP 3/4"
442947 - 001	PINC NO.15 BP ELB FI20-RP 1/2"
442948 - 001	PINC NO.15 BP ELB FI20-RP 3/4"

PINC Elbow Female Top Wingback

REHAU Article Code	Size
442949 - 001	PINC NO.15 BP EWB FI16-RP 1/2"
442950 - 001	PINC NO.15 BP EWB FI20-RP 1/2"
442951 - 001	PINC NO.15 BP EWB FI20-RP 3/4"

PINC Elbow Male Parallel Thread

REHAU Article Code	Size
442942 - 001	PINC NO.19 BP ELB MI16-G1/2" 65
442943 - 001	PINC NO.19 BP ELB MI16-G1/2" 90
442944 - 001	PINC NO.19 BP ELB MI20-G1/2" 95

PINC Hose Plate

REHAU Article Code	Size
442958 - 001	PINC HOSE PLATE 16 - Rp 1/2"

PINC Stopper

REHAU Article Code	Size
442940 - 001	PINC NO.61 STOPPER 16
442941 - 001	PINC NO.61 STOPPER 20

PINC Straight Tap Connector With Gasket

REHAU Article Code	Size
442959 - 001	PINC NO.62 S TAP WGASK16-G1/2"
442960 - 001	PINC NO.62 S TAP WGASK20-G3/4"

Integrated gasket seal, flat

PINC Straight Tap Connector

REHAU Article Code	Size
442954 - 001	PINC NO.62 S TAP CONN16-G 1/2"
442955 - 001	PINC NO.62 S TAP CONN20-G 3/4"

Integrated flexible seal, tapered

PINC Bent Tap Connector

REHAU Article Code	Size
442952 - 001	PINC NO.63 B TAP CONN16-G 1/2"
442953 - 001	PINC NO.63 B TAP CONN20-G 3/4"

Integrated flexible seal, tapered

PINC Tee Piece Wingback

REHAU Article Code	Size
442927 - 001	PINC NO.30 T-PIECE 16-RP1/2"-16

PINC Transition Straight Coupling

REHAU Article Code	Size
431936 - 001	PINC NO.1 TRS COUPLING16-25RT
431937 - 001	PINC NO.1 TRS COUPLING 20-25RT

Transition to RAUTITAN compression sleeve system

PINC Transition Tee Piece

REHAU Article Code	Size
431935 - 001	PINC TRAN T-PIECE 25RT-20-25RT

Transition to RAUTITAN compression sleeve system

PINC Union Connector NZ

REHAU Article Code	Size
442956 - 001	PINC UNION CONN 16-DN15 NZ
442957 - 001	PINC UNION CONN 20-DN20 NZ

Transition to NZ Copper pipe - NZS 3501

Same pipe, faster installation



RAUTITAN Platinum for Drinking Water

REHAU Article Code	Size	mtrs/Coil	mtrs/Length	Package/Coil (mtrs)
132300 - 005	16x2.2	-	5	100
132310 - 005	20x2.8	-	5	100
132300 - 100	16x2.2	100	-	100
132310 - 100	20x2.8	100	-	100

RAUTITAN Red for Hot Drinking Water

REHAU Article Code	Size	mtrs/Coil	mtrs/Length	Package/Coil (mtrs)
132520 - 005	16x2.2	-	5	100
132530 - 005	20x2.8	-	5	100
132520 - 100	16x2.2	100	-	100
132530 - 100	20x2.8	100	-	100

RAUTITAN Lilac for Recycled Water

REHAU Article Code	Size	mtrs/Coil	mtrs/Length	Package/Coil (mtrs)
122200 - 050	16x2.2	50	-	50
122210 - 050	20x2.8	50	-	50

RAUTITAN Green for Rainwater

REHAU Article Code	Size	mtrs/Coil	mtrs/Length	Package/Coil (mtrs)
104200 - 050	16x2.2	50	-	50
104210 - 050	20x2.8	50	-	50

Suitable pipe cutters for PINC™ system:



Pipe cutter 16/20 (stabil) 247474-001



Pipe cutter 25 137495-001



Pipe cutter 40 138062-001

Scan the QR code and read all instructions provided before installing PINC™

If you have trouble accessing the instructions contact REHAU for clarification and advise.

reha.com/qr/fab2ee2155

