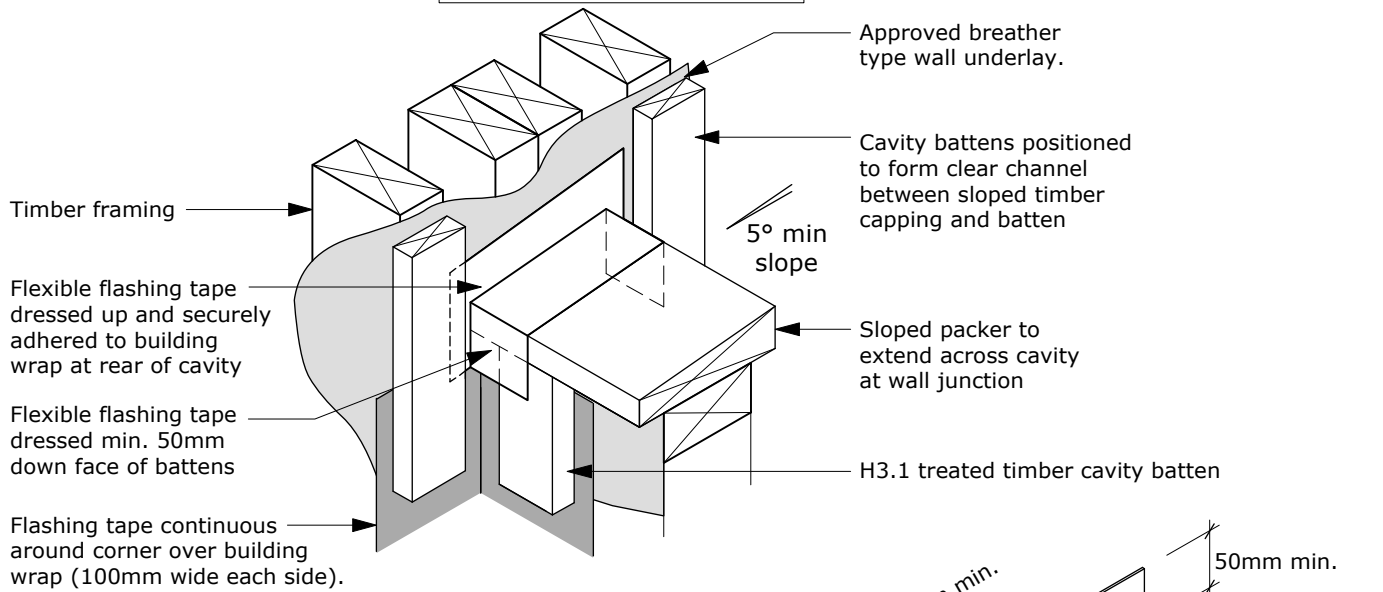


# BGC

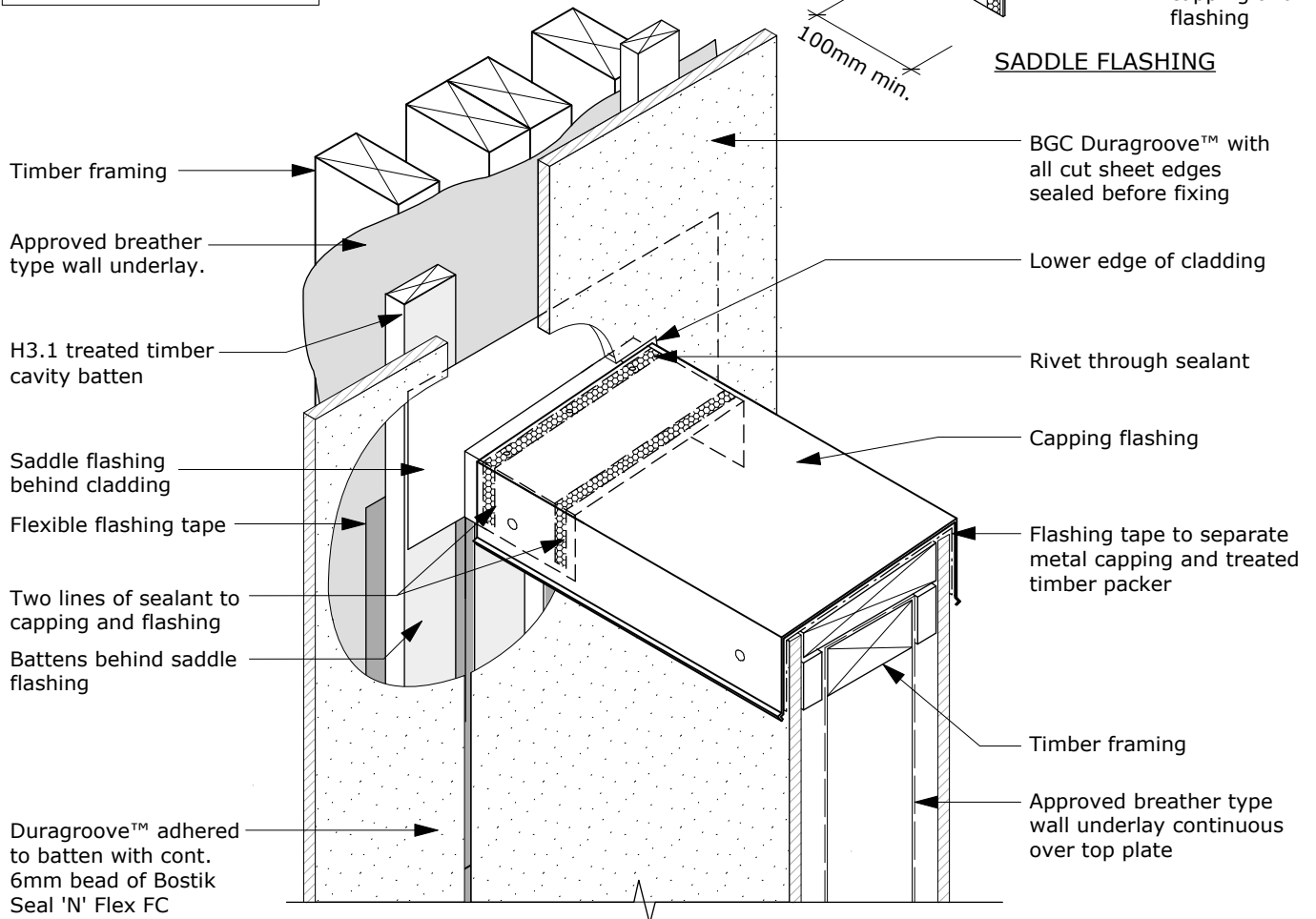
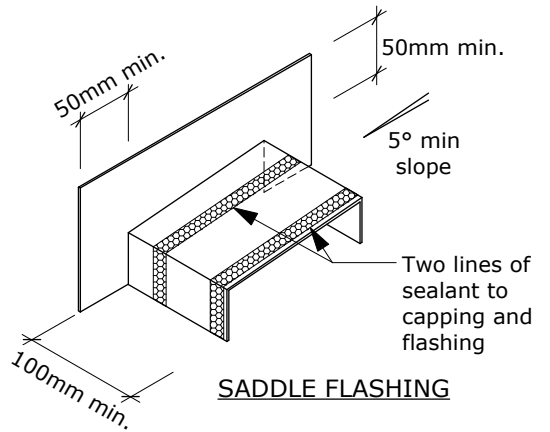
# Fibre Cement



### FLEXIBLE FLASHING INSTALLATION

#### Cavity Batten Note:

Refer to cavity batten layout for batten sizes, types, spacings & fixings.



PROFILE **BGC Duragroove™**

DATE Nov 2011

DETAIL **Balustrade to Wall Junction**

SCALE NTS

DETAIL NO. **D 29**