

Bevelback Weatherboards

COMMERCIAL HORIZONTAL CLADDING

DETAIL LIST

00 / 23	COVER SHEET
01 / 23	PARAPET AND BALUSTRADE CAPPING
02 / 23	SOFFIT
03 / 23	FLUSH WINDOW HEAD
04 / 23	FLUSH WINDOW SILL
05 / 23	FLUSH WINDOW JAMB
06 / 23	RECESSED WINDOW HEAD
07 / 23	RECESSED WINDOW SILL
08 / 23	RECESSED WINDOW JAMB
09 / 23	BUTT WINDOW HEAD
10 / 23	BUTT WINDOW SILL
11 / 23	BUTT WINDOW JAMB
12 / 23	METERBOX HEAD
13 / 23	METERBOX SILL
14 / 23	METERBOX JAMB
15 / 23	INTERNAL CORNER
16 / 23	EXTERNAL CORNER
17 / 23	INTERNAL CORNER BOX TYPE
18 / 23	EXTERNAL CORNER BOX TYPE
19 / 23	SOAKER FLASHING
20 / 23	VERTICAL BUTT JOINT
21 / 23	BOTTOM OF CLADDING (FLUSH)
22 / 23	BOTTOM OF CLADDING (RECESSED)
23 / 23	3D WINDOW FLASHINGS

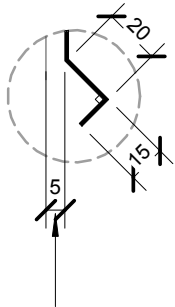
ACCEPTABLE SOLUTION AS PER E2/ASI

SITUATION 1	SITUATION 2	SITUATION 3
1. LOW, MEDIUM, HIGH WIND ZONES, WHERE ROOF PITCH $\geq 10^\circ$	1. ALL ROOF PITCHES IN VERY HIGH WIND ZONE 2. LOW, MEDIUM, HIGH WIND ZONES WHERE ROOF PITCH $\leq 10^\circ$	1. FOR ALL ROOF PITCHES IN EXTRA HIGH WIND ZONES
Z MIN. 50mm	MIN. 70mm	MIN. 90mm

ALTERNATIVE SOLUTION AS PER MRM CODE OF PRACTICE

CATEGORY A	CATEGORY B
1. NORMAL EXPOSURE 2. ROOF PITCH $>10^\circ$	1. EXPOSED (HIGHER RISK) & WIND LOAD EXCEEDS 1.5 kPa. 2. ROOF PITCH $<10^\circ$
Z MIN. 50mm (VERTICALLY DOWN FACE - SMOOTH) MIN. 75mm (VERTICALLY DOWN FACE - PROFILED)	MIN. 75mm (VERTICALLY DOWN FACE - SMOOTH) MIN. 100mm (VERTICALLY DOWN FACE - PROFILED)

PERMEABLE WALL UNDERLAY TO PROVIDE SEPARATION OF METAL CAPPING AND CLADDING WITH TIMBER, SHOWN DASHED



BIRDS BEAK EDGE FOR DECK SIDE OF CAPPING

PRE-FINISHED POP RIVET BEDDED IN SILICONE OR PRE-FINISHED 8g WAFER-TEK SCREW

METALCRAFT MSS PURLIN BY ENGINEER

METALCRAFT BEVELBACK WEATHERBOARD CLADDING

20MM CAVITY

MIN. 5.00°

PRE-FINISHED PARAPET CAP FLASHING NO FIXINGS ON TOP OF FLASHING

CONTINUOUS H3.1 TIMBER PACKING

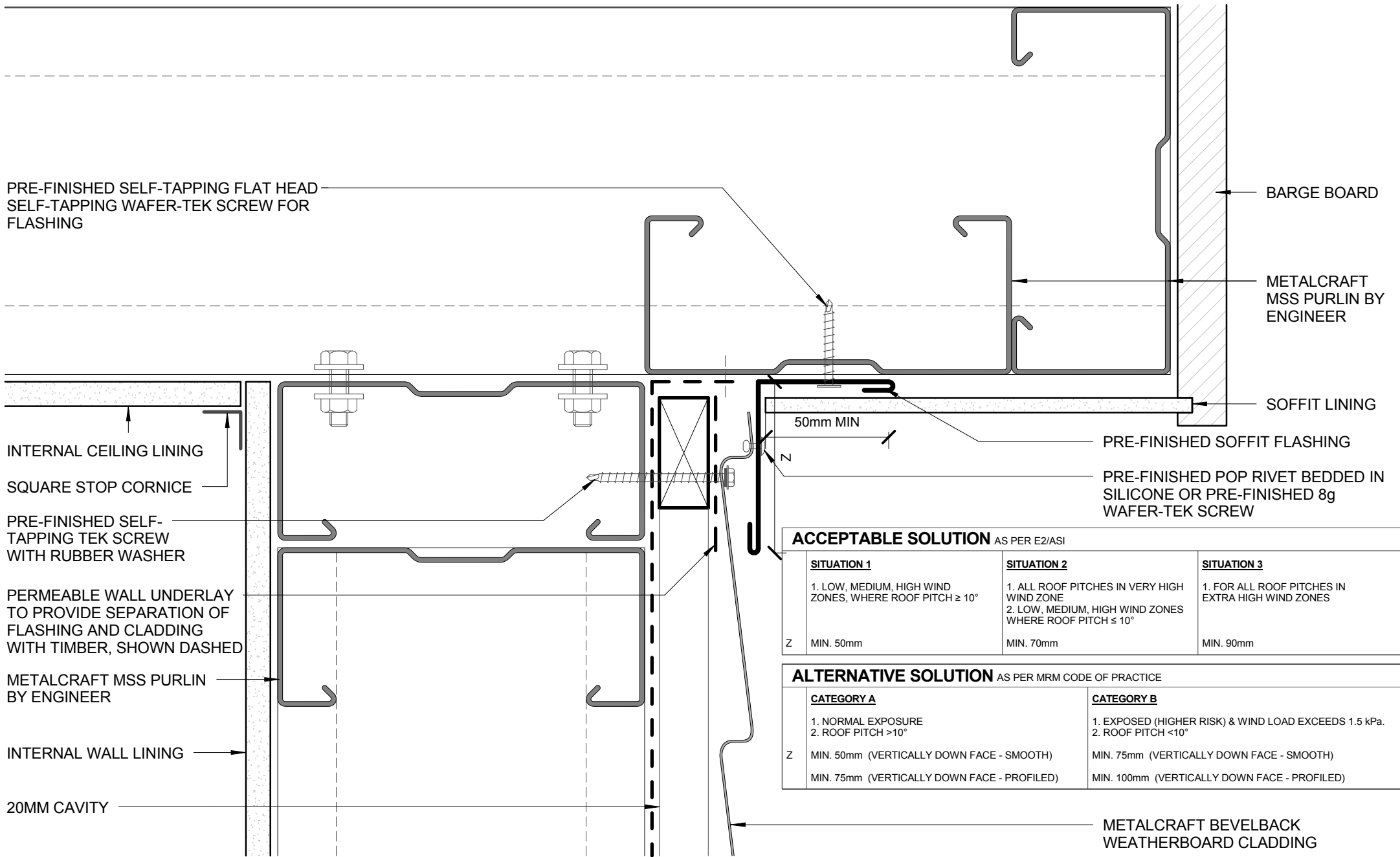
25 CLEARANCE

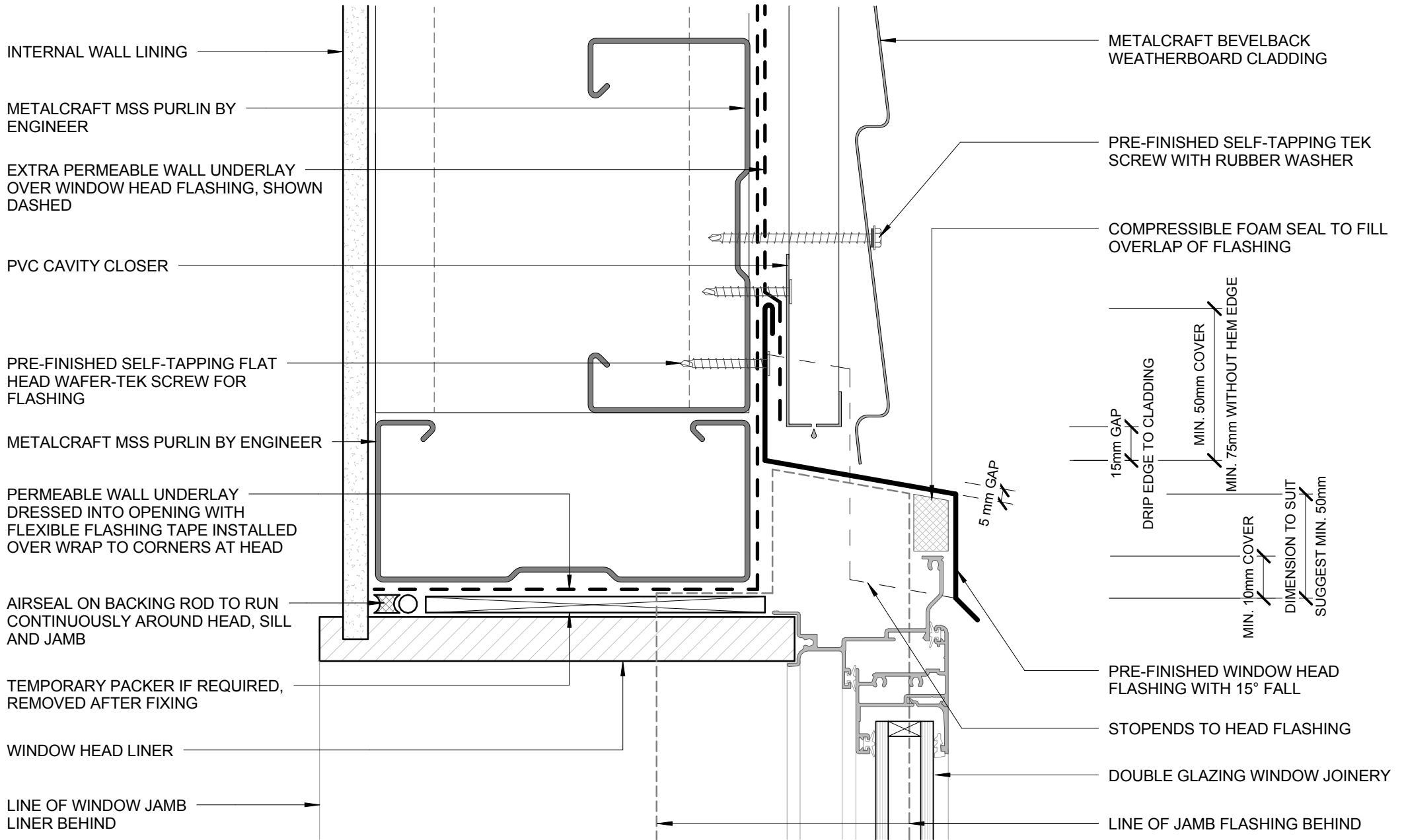
PRE-FINISHED SELF-TAPPING TEK SCREW WITH RUBBER WASHER.

PERMEABLE WALL UNDERLAY TO PROVIDE SEPARATION OF FLASHING AND CLADDING WITH TIMBER, SHOWN DASHED

PERMEABLE WALL UNDERLAY, SHOWN DASHED

PARAPET AND BALUSTRADE CAPPING
COMMERCIAL HORIZONTAL CLADDING





INTERNAL WALL LINING

METALCRAFT MSS PURLIN BY ENGINEER

EXTRA PERMEABLE WALL UNDERLAY OVER WINDOW HEAD FLASHING, SHOWN DASHED

PVC CAVITY CLOSER

PRE-FINISHED SELF-TAPPING FLAT HEAD WAFER-TEK SCREW FOR FLASHING

METALCRAFT MSS PURLIN BY ENGINEER

PERMEABLE WALL UNDERLAY DRESSED INTO OPENING WITH FLEXIBLE FLASHING TAPE INSTALLED OVER WRAP TO CORNERS AT HEAD

AIRSEAL ON BACKING ROD TO RUN CONTINUOUSLY AROUND HEAD, SILL AND JAMB

TEMPORARY PACKER IF REQUIRED, REMOVED AFTER FIXING

WINDOW HEAD LINER

LINE OF WINDOW JAMB LINER BEHIND

METALCRAFT BEVELBACK WEATHERBOARD CLADDING

PRE-FINISHED SELF-TAPPING TEK SCREW WITH RUBBER WASHER

COMPRESSIBLE FOAM SEAL TO FILL OVERLAP OF FLASHING

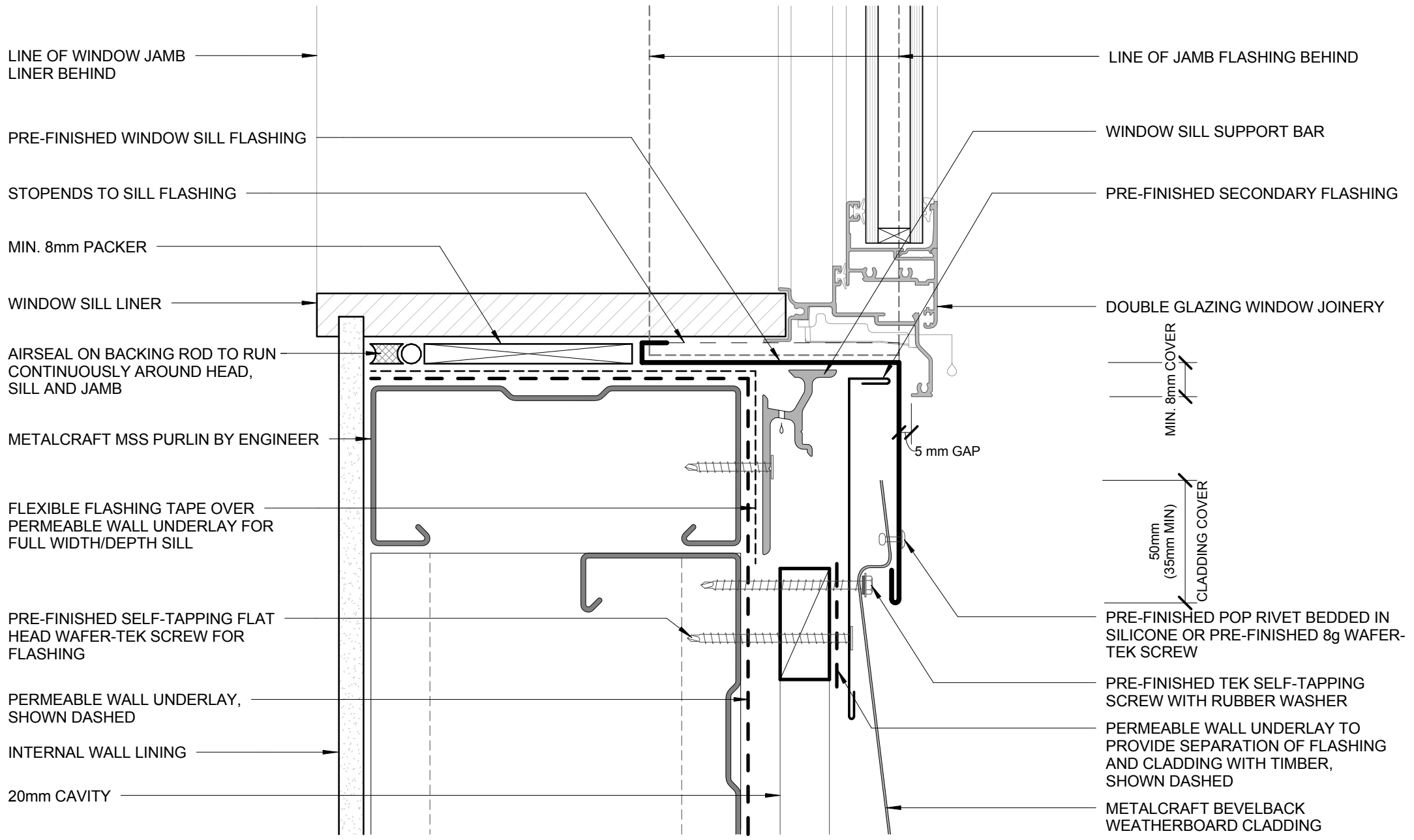
15mm GAP
 DRIP EDGE TO CLADDING
 MIN. 50mm COVER
 MIN. 75mm WITHOUT HEM EDGE
 5mm GAP
 MIN. 10mm COVER
 DIMENSION TO SUIT
 SUGGEST MIN. 50mm

PRE-FINISHED WINDOW HEAD FLASHING WITH 15° FALL

STOPENDS TO HEAD FLASHING

DOUBLE GLAZING WINDOW JOINERY

LINE OF JAMB FLASHING BEHIND



LINE OF WINDOW JAMB LINER BEHIND

PRE-FINISHED WINDOW SILL FLASHING

STOPENDS TO SILL FLASHING

MIN. 8mm PACKER

WINDOW SILL LINER

AIRSEAL ON BACKING ROD TO RUN CONTINUOUSLY AROUND HEAD, SILL AND JAMB

METALCRAFT MSS PURLIN BY ENGINEER

FLEXIBLE FLASHING TAPE OVER PERMEABLE WALL UNDERLAY FOR FULL WIDTH/DEPTH SILL

PRE-FINISHED SELF-TAPPING FLAT HEAD WAFER-TEK SCREW FOR FLASHING

PERMEABLE WALL UNDERLAY, SHOWN DASHED

INTERNAL WALL LINING

20mm CAVITY

LINE OF JAMB FLASHING BEHIND

WINDOW SILL SUPPORT BAR

PRE-FINISHED SECONDARY FLASHING

DOUBLE GLAZING WINDOW JOINERY

MIN. 8mm COVER

5 mm GAP

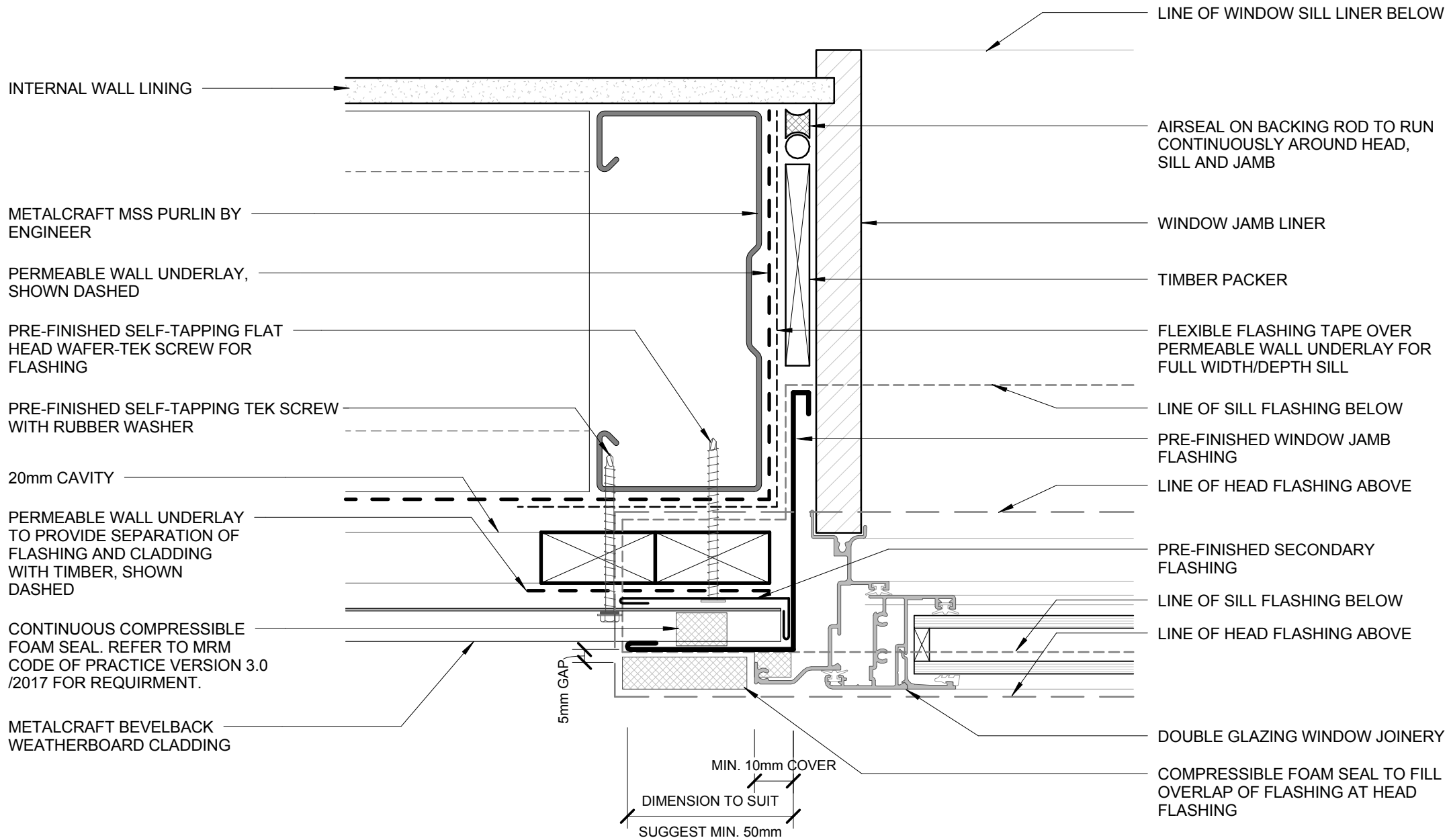
50mm (35mm MIN) CLADDING COVER

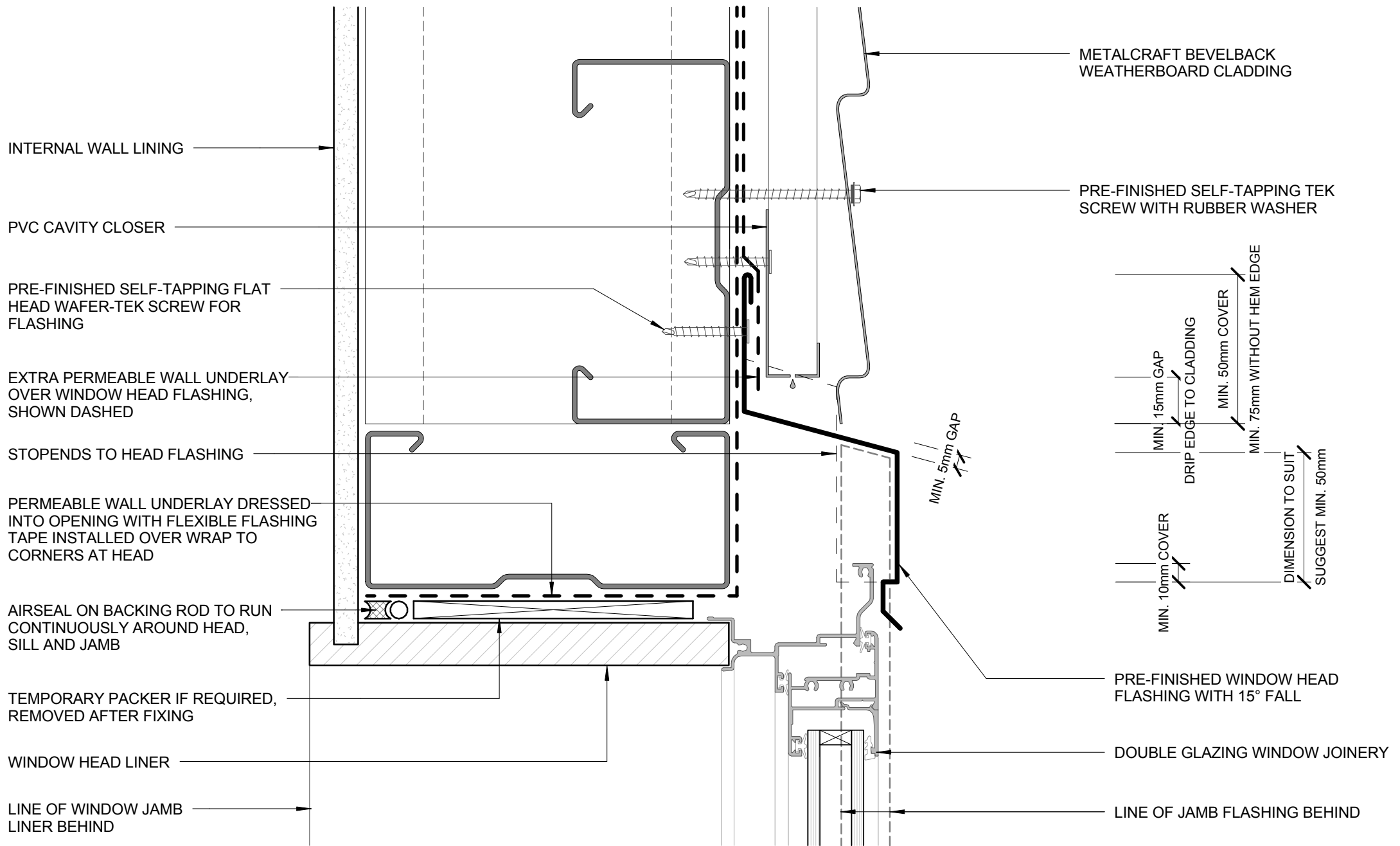
PRE-FINISHED POP RIVET BEDDED IN SILICONE OR PRE-FINISHED 8g WAFER-TEK SCREW

PRE-FINISHED TEK SELF-TAPPING SCREW WITH RUBBER WASHER

PERMEABLE WALL UNDERLAY TO PROVIDE SEPARATION OF FLASHING AND CLADDING WITH TIMBER, SHOWN DASHED

METALCRAFT BEVELBACK WEATHERBOARD CLADDING





INTERNAL WALL LINING

PVC CAVITY CLOSER

PRE-FINISHED SELF-TAPPING FLAT HEAD WAFER-TEK SCREW FOR FLASHING

EXTRA PERMEABLE WALL UNDERLAY OVER WINDOW HEAD FLASHING, SHOWN DASHED

STOP ENDS TO HEAD FLASHING

PERMEABLE WALL UNDERLAY DRESSED INTO OPENING WITH FLEXIBLE FLASHING TAPE INSTALLED OVER WRAP TO CORNERS AT HEAD

AIRSEAL ON BACKING ROD TO RUN CONTINUOUSLY AROUND HEAD, SILL AND JAMB

TEMPORARY PACKER IF REQUIRED, REMOVED AFTER FIXING

WINDOW HEAD LINER

LINE OF WINDOW JAMB LINER BEHIND

METALCRAFT BEVELBACK WEATHERBOARD CLADDING

PRE-FINISHED SELF-TAPPING TEK SCREW WITH RUBBER WASHER

MIN. 5mm GAP

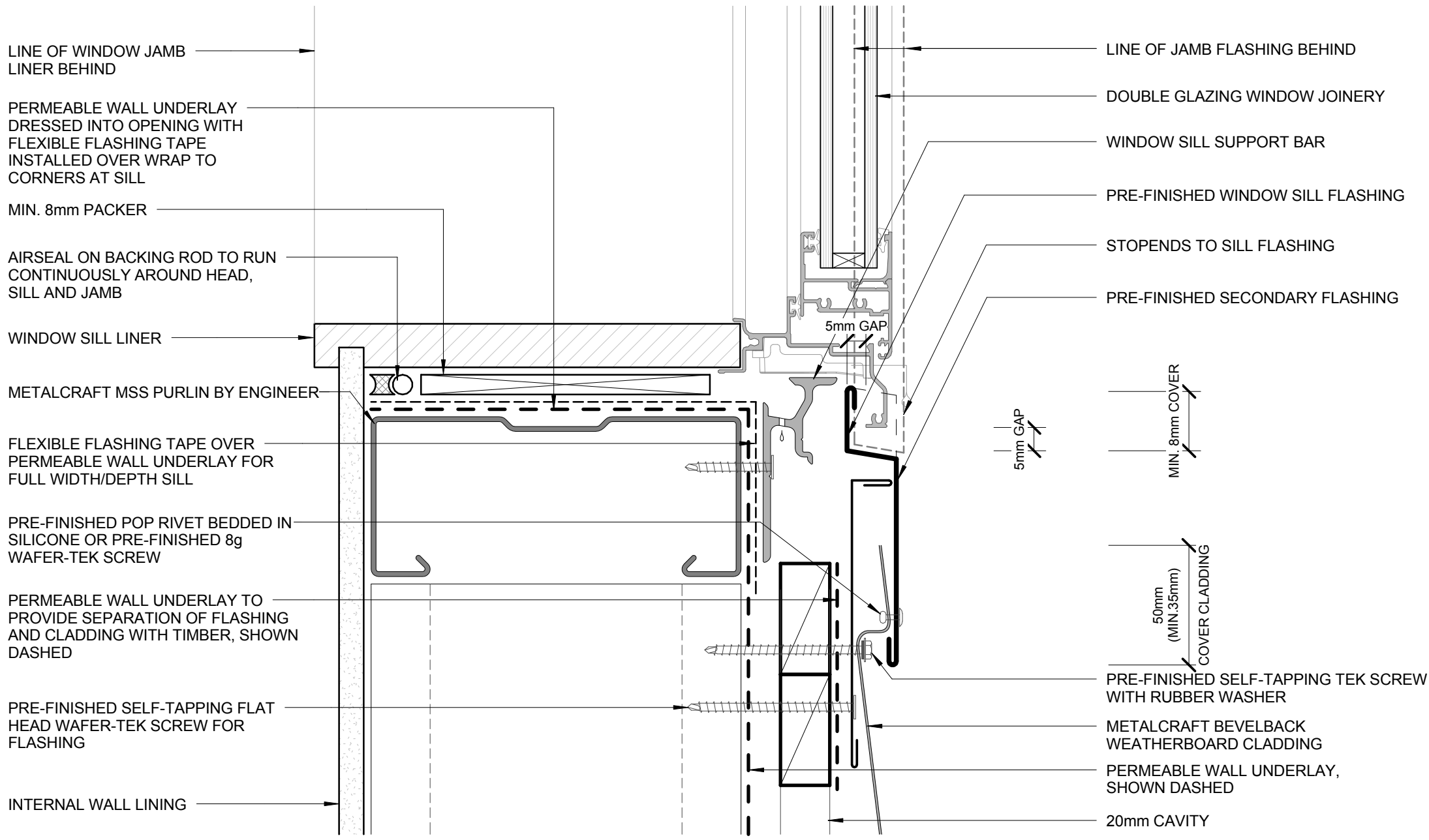
MIN. 15mm GAP
 DRIP EDGE TO CLADDING
 MIN. 50mm COVER
 MIN. 75mm WITHOUT HEM EDGE
 MIN. 10mm COVER
 DIMENSION TO SUIT
 SUGGEST MIN. 50mm

PRE-FINISHED WINDOW HEAD FLASHING WITH 15° FALL

DOUBLE GLAZING WINDOW JOINERY

LINE OF JAMB FLASHING BEHIND

RECESSED WINDOW HEAD
COMMERCIAL HORIZONTAL CLADDING



LINE OF WINDOW JAMB LINER BEHIND

PERMEABLE WALL UNDERLAY DRESSED INTO OPENING WITH FLEXIBLE FLASHING TAPE INSTALLED OVER WRAP TO CORNERS AT SILL

MIN. 8mm PACKER

AIRSEAL ON BACKING ROD TO RUN CONTINUOUSLY AROUND HEAD, SILL AND JAMB

WINDOW SILL LINER

METALCRAFT MSS PURLIN BY ENGINEER

FLEXIBLE FLASHING TAPE OVER PERMEABLE WALL UNDERLAY FOR FULL WIDTH/DEPTH SILL

PRE-FINISHED POP RIVET BEDDED IN SILICONE OR PRE-FINISHED 8g WAFER-TEK SCREW

PERMEABLE WALL UNDERLAY TO PROVIDE SEPARATION OF FLASHING AND CLADDING WITH TIMBER, SHOWN DASHED

PRE-FINISHED SELF-TAPPING FLAT HEAD WAFER-TEK SCREW FOR FLASHING

INTERNAL WALL LINING

LINE OF JAMB FLASHING BEHIND

DOUBLE GLAZING WINDOW JOINERY

WINDOW SILL SUPPORT BAR

PRE-FINISHED WINDOW SILL FLASHING

STOPENDS TO SILL FLASHING

PRE-FINISHED SECONDARY FLASHING

5mm GAP

5mm GAP

MIN. 8mm COVER

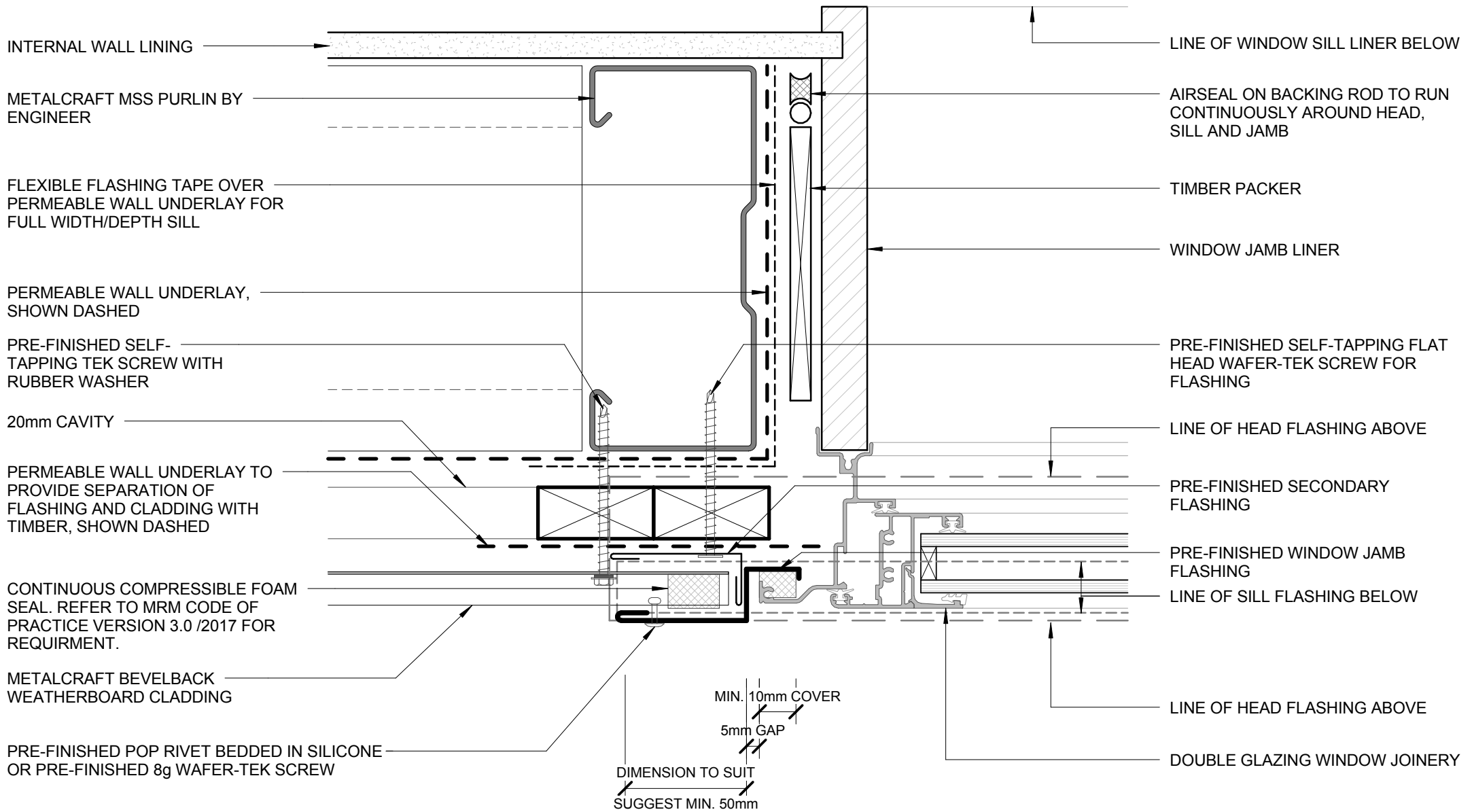
50mm (MIN. 35mm) COVER CLADDING

PRE-FINISHED SELF-TAPPING TEK SCREW WITH RUBBER WASHER

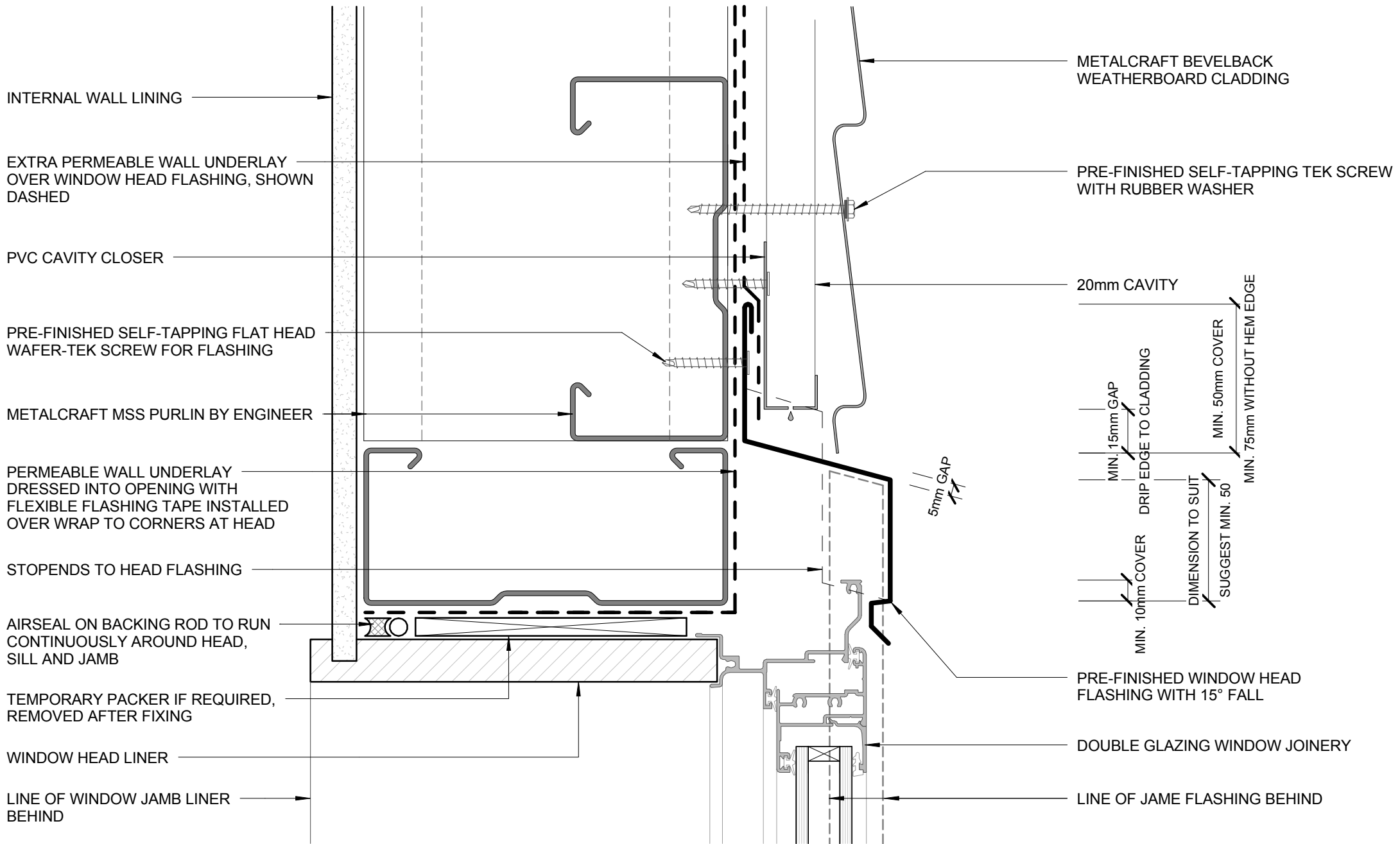
METALCRAFT BEVELBACK WEATHERBOARD CLADDING

PERMEABLE WALL UNDERLAY, SHOWN DASHED

20mm CAVITY



RECESSED WINDOW JAMB
COMMERCIAL HORIZONTAL CLADDING



INTERNAL WALL LINING

EXTRA PERMEABLE WALL UNDERLAY OVER WINDOW HEAD FLASHING, SHOWN DASHED

PVC CAVITY CLOSER

PRE-FINISHED SELF-TAPPING FLAT HEAD WAFER-TEK SCREW FOR FLASHING

METALCRAFT MSS PURLIN BY ENGINEER

PERMEABLE WALL UNDERLAY DRESSED INTO OPENING WITH FLEXIBLE FLASHING TAPE INSTALLED OVER WRAP TO CORNERS AT HEAD

STOPENDS TO HEAD FLASHING

AIRSEAL ON BACKING ROD TO RUN CONTINUOUSLY AROUND HEAD, SILL AND JAMB

TEMPORARY PACKER IF REQUIRED, REMOVED AFTER FIXING

WINDOW HEAD LINER

LINE OF WINDOW JAMB LINER BEHIND

METALCRAFT BEVELBACK WEATHERBOARD CLADDING

PRE-FINISHED SELF-TAPPING TEK SCREW WITH RUBBER WASHER

20mm CAVITY

MIN. 15mm GAP

MIN. 10mm COVER

DRIP EDGE TO CLADDING

DIMENSION TO SUIT SUGGEST MIN. 50

MIN. 50mm COVER

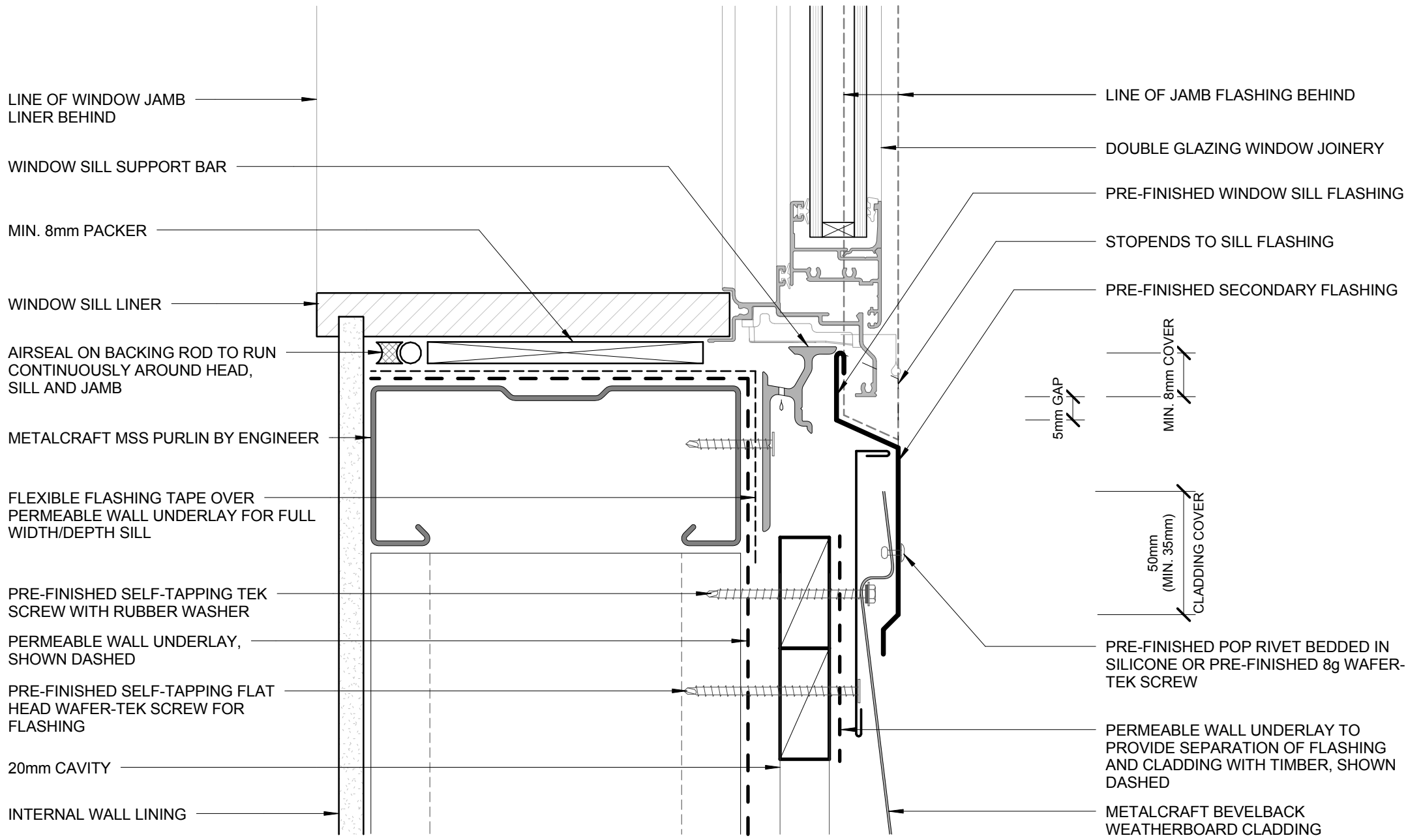
MIN. 75mm WITHOUT HEM EDGE

5mm GAP

PRE-FINISHED WINDOW HEAD FLASHING WITH 15° FALL

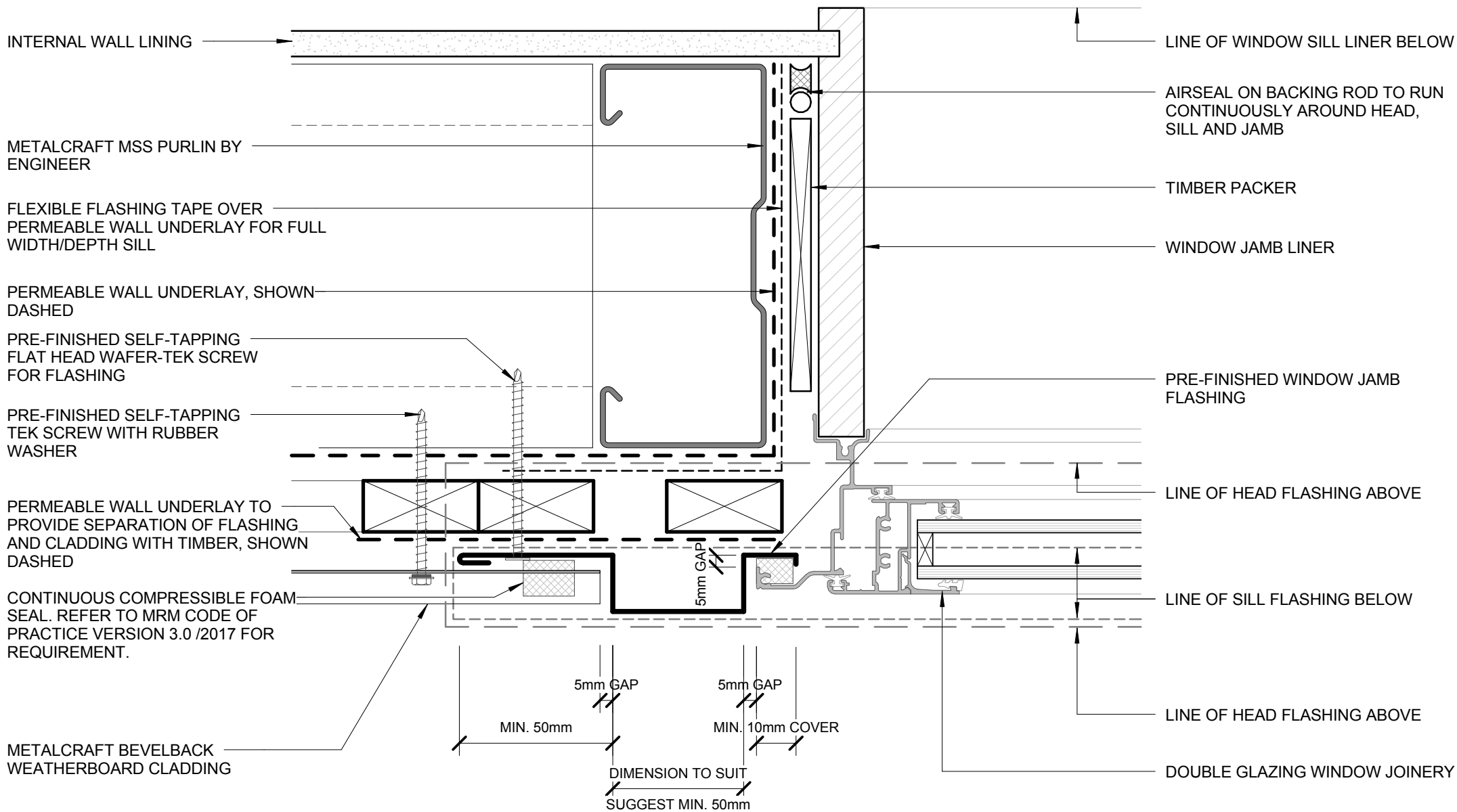
DOUBLE GLAZING WINDOW JOINERY

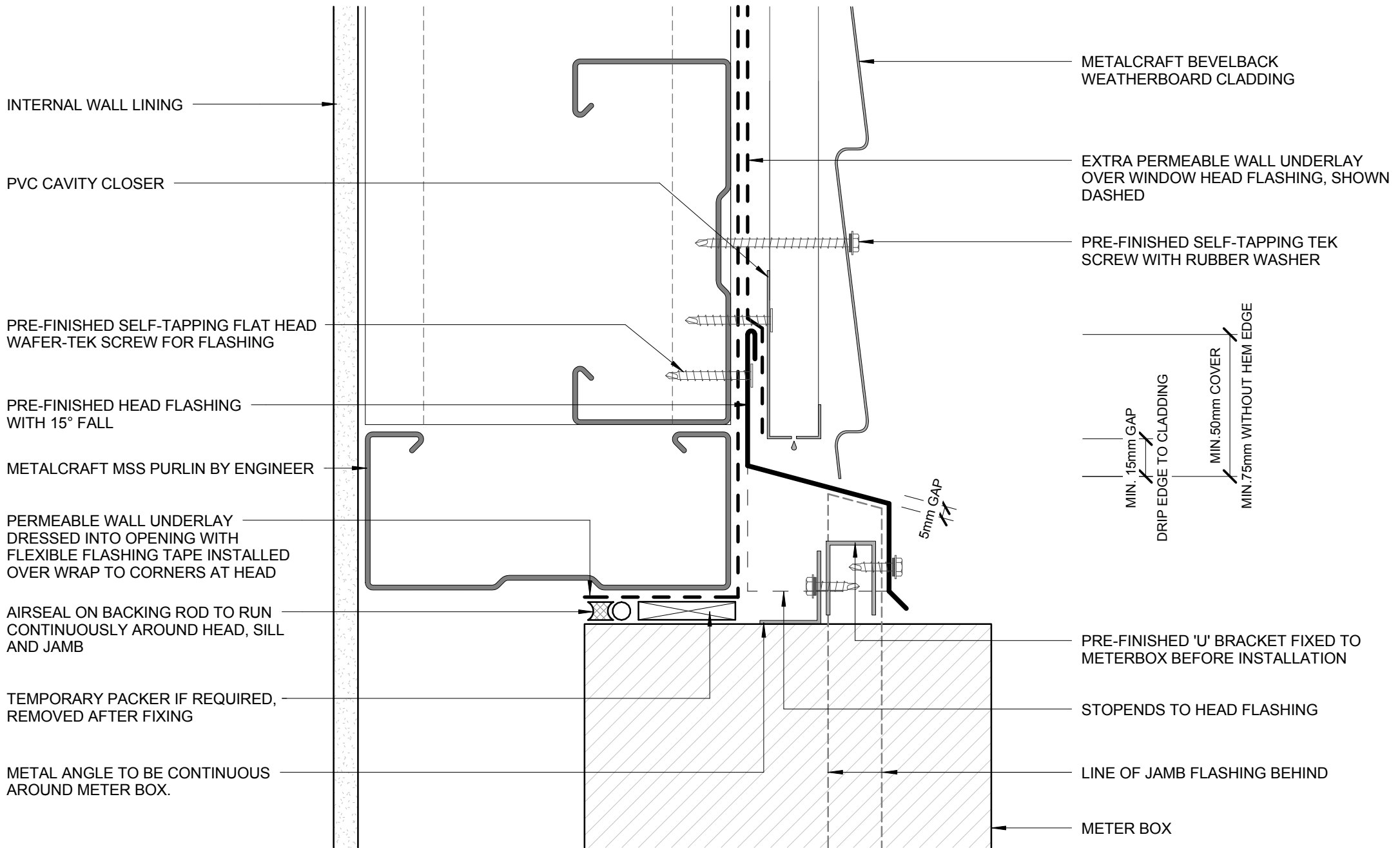
LINE OF JAMB FLASHING BEHIND



BUTT WINDOW SILL

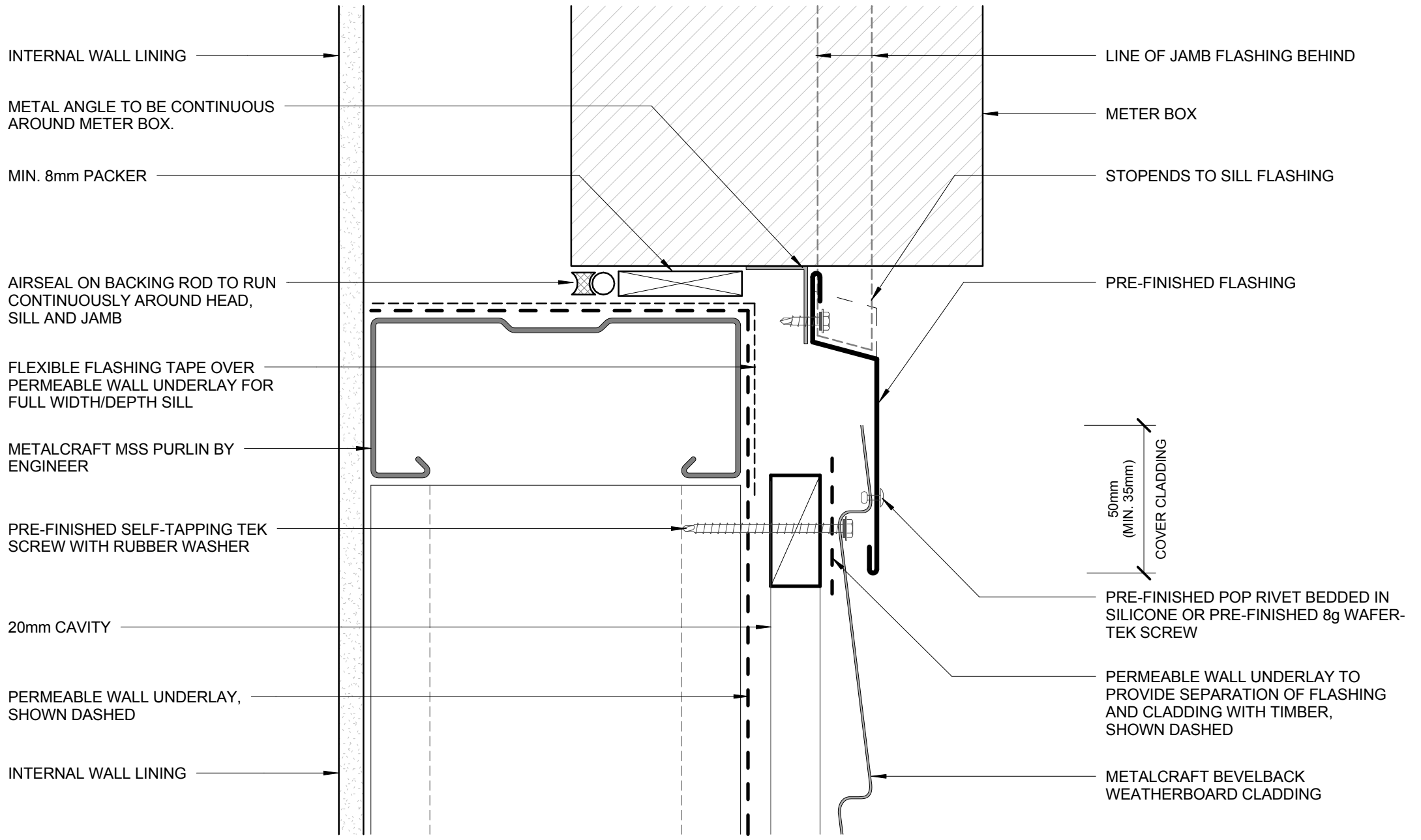
COMMERCIAL HORIZONTAL CLADDING





METERBOX HEAD

COMMERCIAL HORIZONTAL CLADDING



INTERNAL WALL LINING

METAL ANGLE TO BE CONTINUOUS AROUND METER BOX.

MIN. 8mm PACKER

AIRSEAL ON BACKING ROD TO RUN CONTINUOUSLY AROUND HEAD, SILL AND JAMB

FLEXIBLE FLASHING TAPE OVER PERMEABLE WALL UNDERLAY FOR FULL WIDTH/DEPTH SILL

METALCRAFT MSS PURLIN BY ENGINEER

PRE-FINISHED SELF-TAPPING TEK SCREW WITH RUBBER WASHER

20mm CAVITY

PERMEABLE WALL UNDERLAY, SHOWN DASHED

INTERNAL WALL LINING

LINE OF JAMB FLASHING BEHIND

METER BOX

STOPENDS TO SILL FLASHING

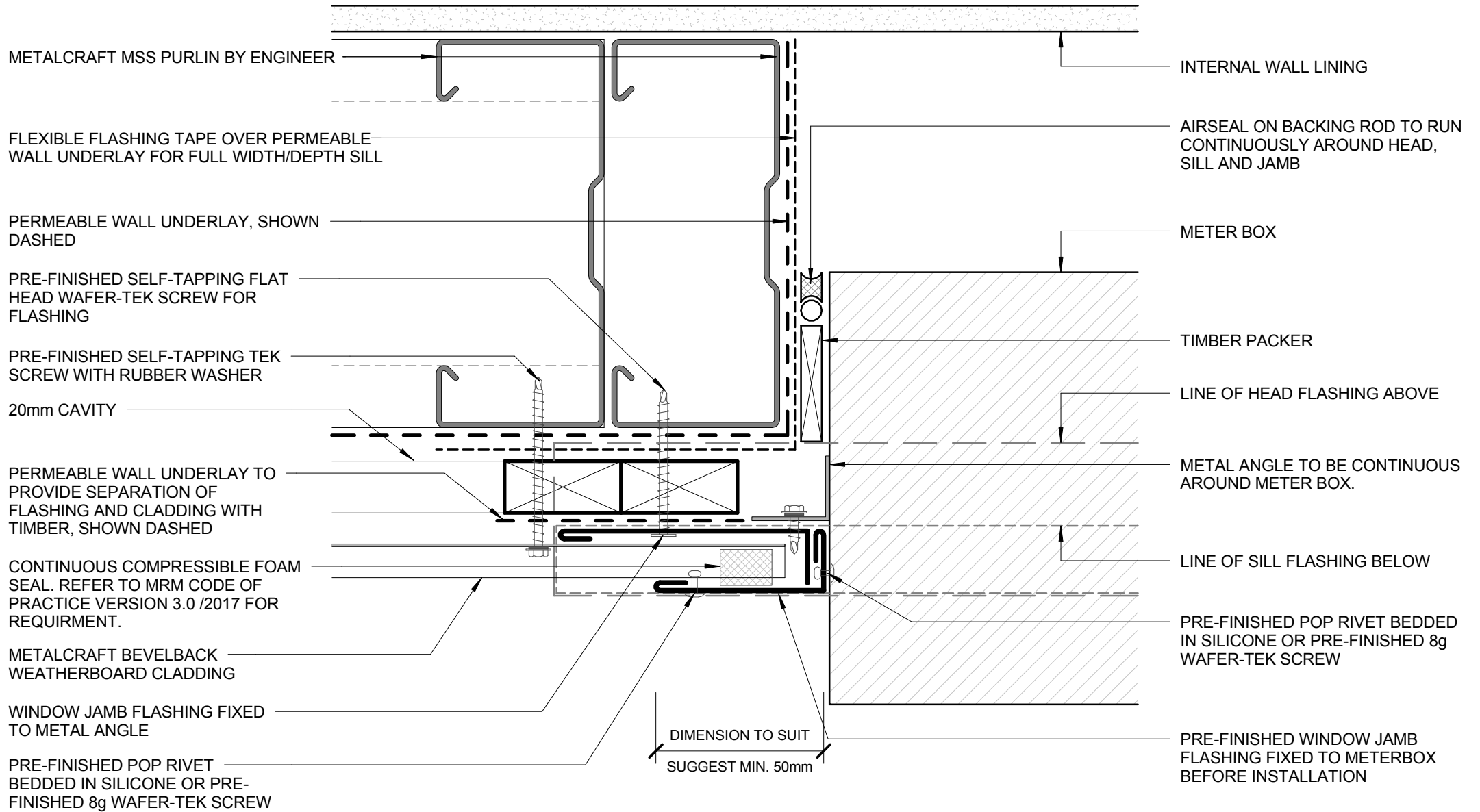
PRE-FINISHED FLASHING

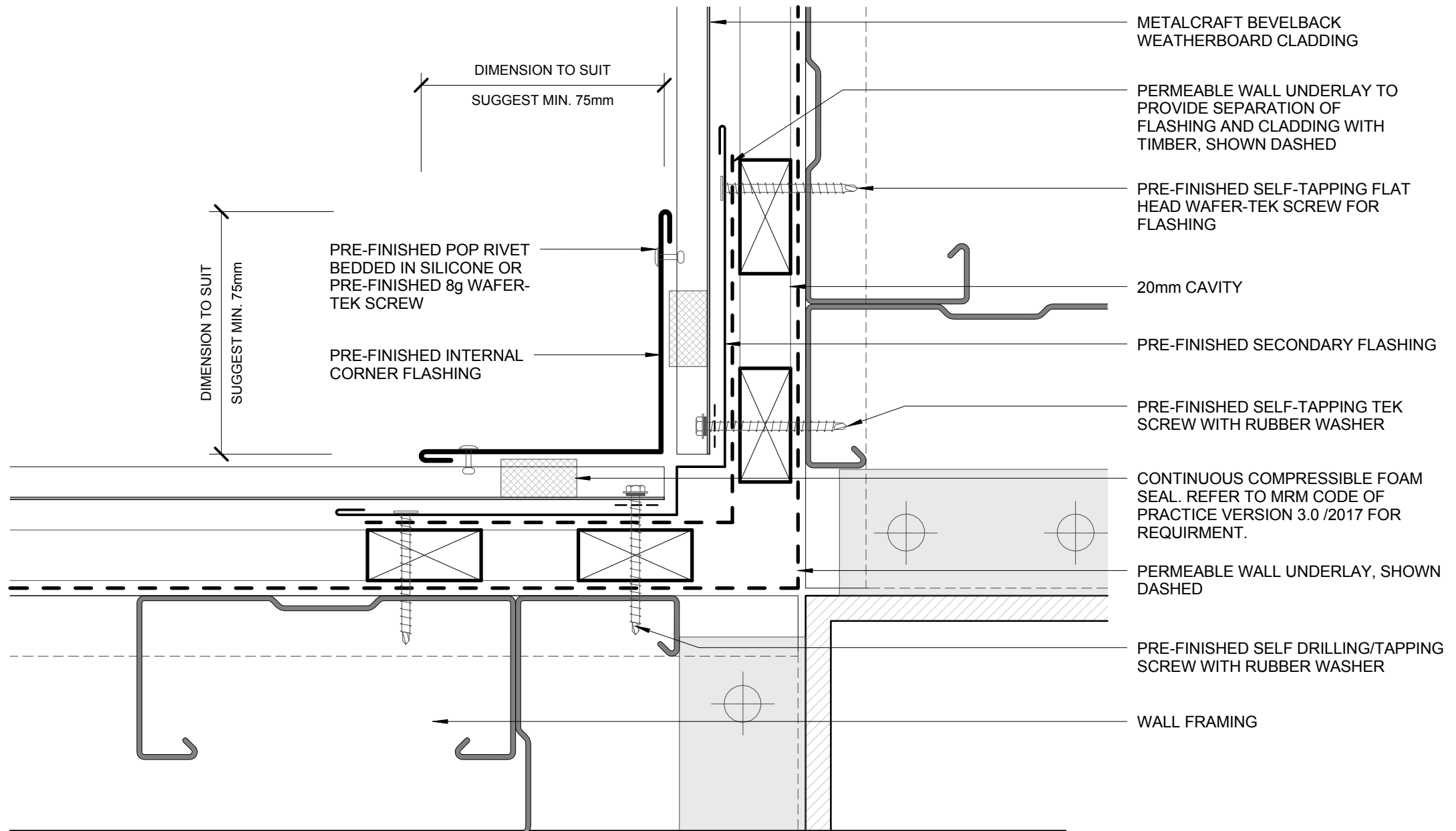
50mm (MIN. 35mm)
COVER CLADDING

PRE-FINISHED POP RIVET BEDDED IN SILICONE OR PRE-FINISHED 8g WAFER-TEK SCREW

PERMEABLE WALL UNDERLAY TO PROVIDE SEPARATION OF FLASHING AND CLADDING WITH TIMBER, SHOWN DASHED

METALCRAFT BEVELBACK WEATHERBOARD CLADDING





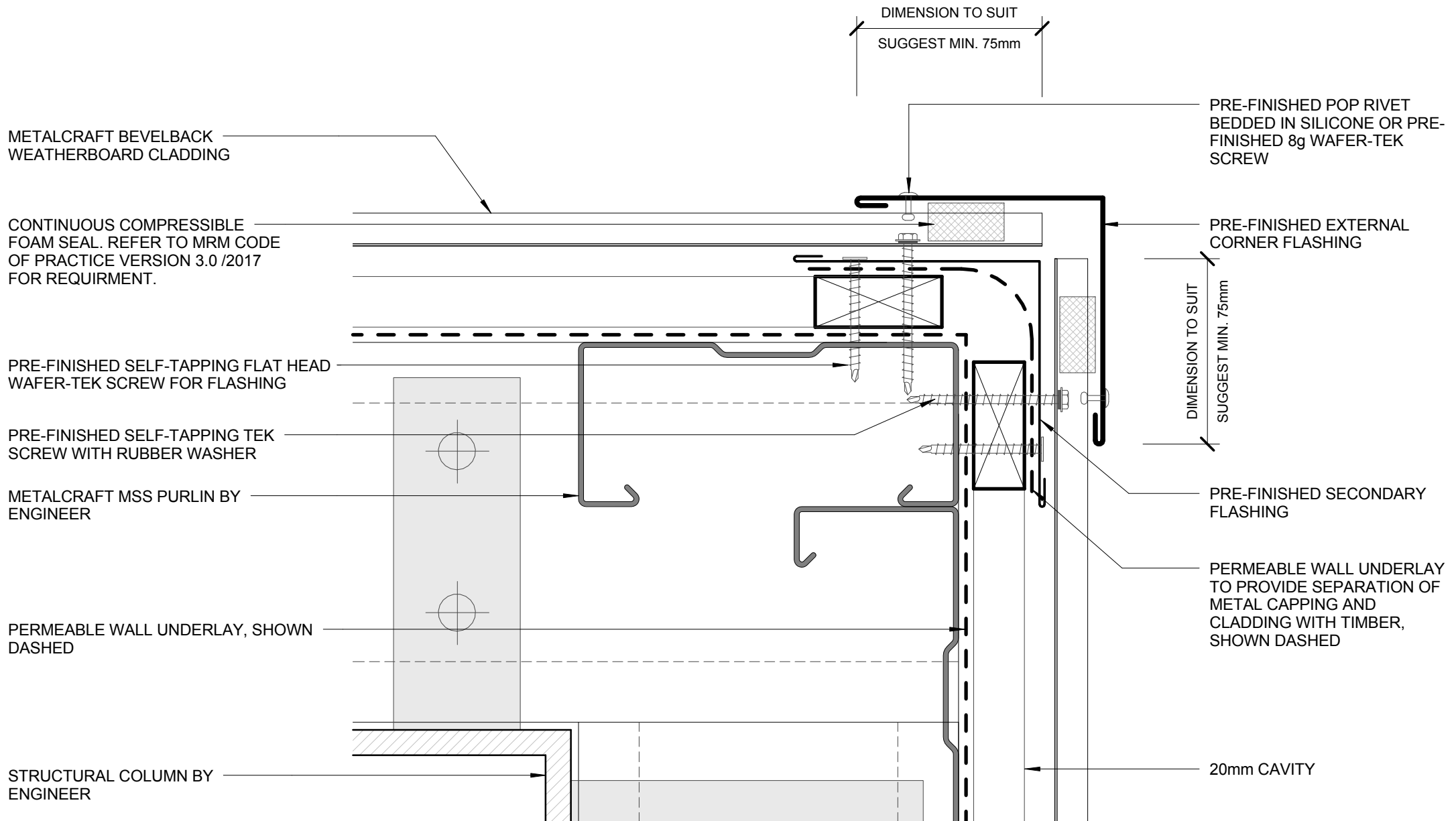
- METALCRAFT BEVELBACK WEATHERBOARD CLADDING
- PERMEABLE WALL UNDERLAY TO PROVIDE SEPARATION OF FLASHING AND CLADDING WITH TIMBER, SHOWN DASHED
- PRE-FINISHED SELF-TAPPING FLAT HEAD WAFER-TEK SCREW FOR FLASHING
- 20mm CAVITY
- PRE-FINISHED SECONDARY FLASHING
- PRE-FINISHED SELF-TAPPING TEK SCREW WITH RUBBER WASHER
- CONTINUOUS COMPRESSIBLE FOAM SEAL. REFER TO MRM CODE OF PRACTICE VERSION 3.0 /2017 FOR REQUIREMENT.
- PERMEABLE WALL UNDERLAY, SHOWN DASHED
- PRE-FINISHED SELF DRILLING/TAPPING SCREW WITH RUBBER WASHER
- WALL FRAMING

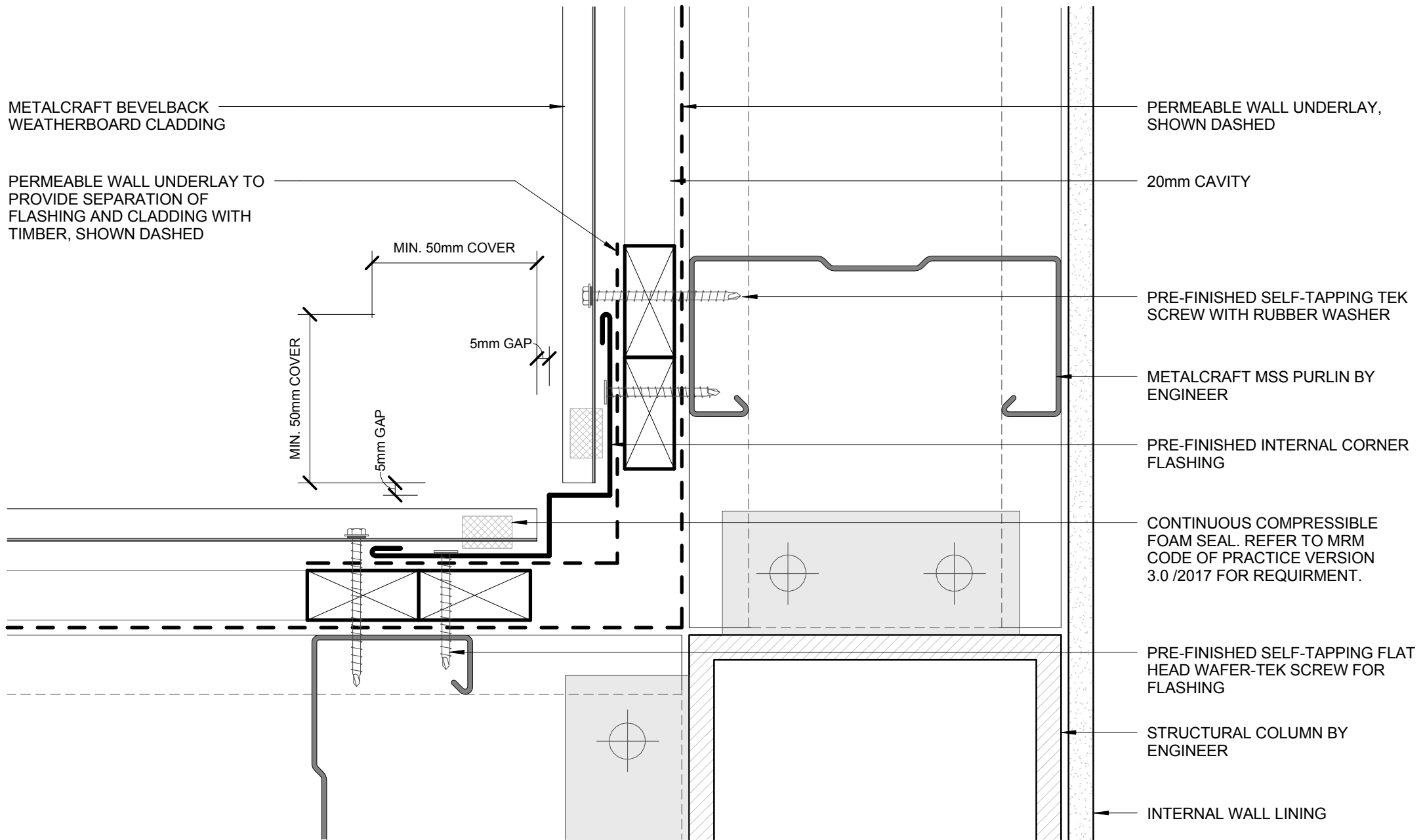
- PRE-FINISHED POP RIVET BEDDED IN SILICONE OR PRE-FINISHED 8g WAFER-TEK SCREW
- PRE-FINISHED INTERNAL CORNER FLASHING

DIMENSION TO SUIT
SUGGEST MIN. 75mm

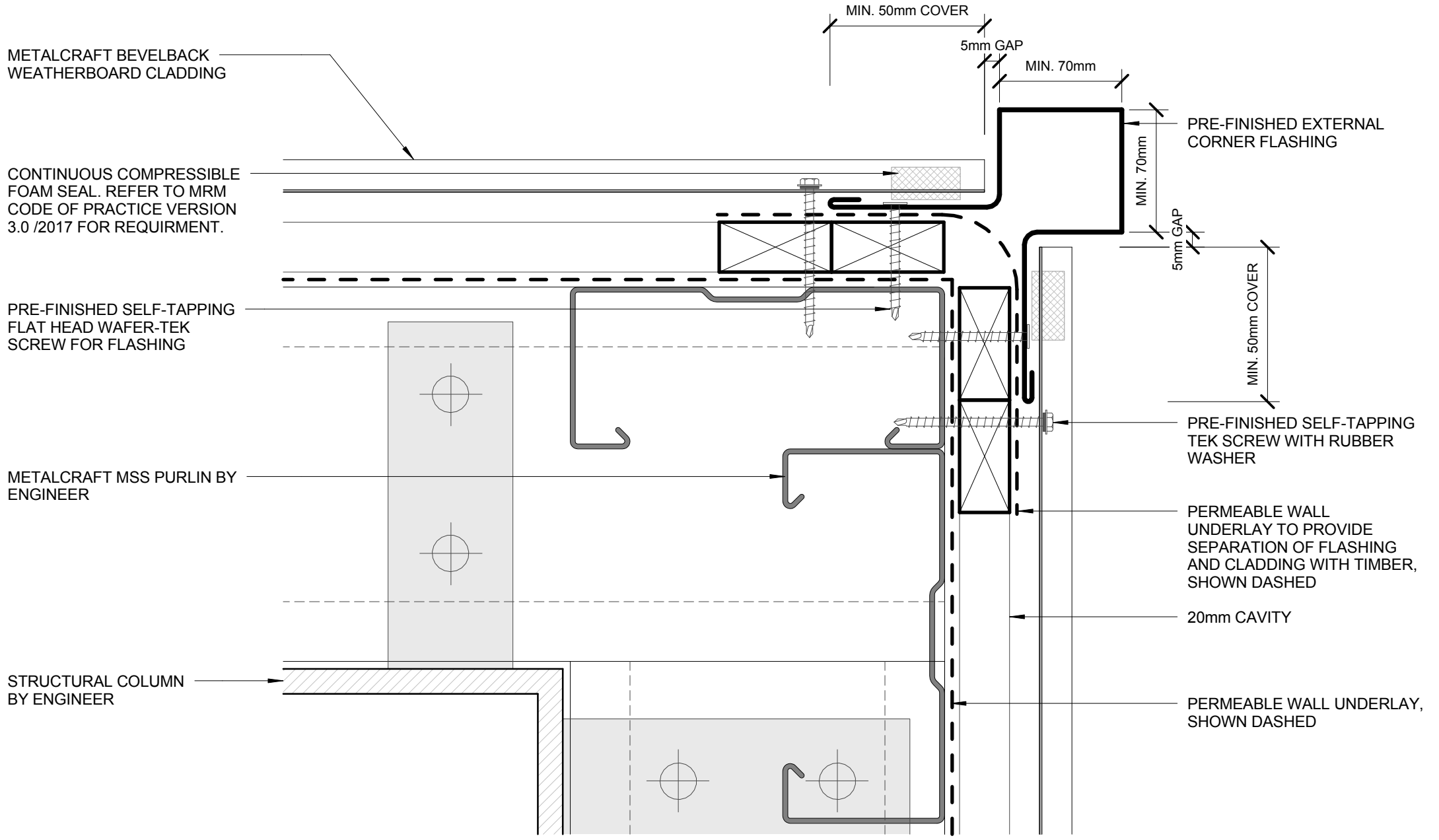
DIMENSION TO SUIT
SUGGEST MIN. 75mm

INTERNAL CORNER
COMMERCIAL HORIZONTAL CLADDING





INTERNAL CORNER BOX TYPE
COMMERCIAL HORIZONTAL CLADDING



METALCRAFT BEVELBACK WEATHERBOARD CLADDING

CONTINUOUS COMPRESSIBLE FOAM SEAL. REFER TO MRM CODE OF PRACTICE VERSION 3.0 /2017 FOR REQUIRMENT.

PRE-FINISHED SELF-TAPPING FLAT HEAD WAFER-TEK SCREW FOR FLASHING

METALCRAFT MSS PURLIN BY ENGINEER

STRUCTURAL COLUMN BY ENGINEER

MIN. 50mm COVER

5mm GAP

MIN. 70mm

MIN. 70mm

5mm GAP

MIN. 50mm COVER

PRE-FINISHED EXTERNAL CORNER FLASHING

PRE-FINISHED SELF-TAPPING TEK SCREW WITH RUBBER WASHER

PERMEABLE WALL UNDERLAY TO PROVIDE SEPARATION OF FLASHING AND CLADDING WITH TIMBER, SHOWN DASHED

20mm CAVITY

PERMEABLE WALL UNDERLAY, SHOWN DASHED

PRE-FINISHED SOAKER FLASHING BELOW WINDOW JAMBS

SOAKER FLASHING ONLY REQUIRED TO LINE UP WITH WINDOW JAMB ABOVE. REFER TO MRM CODE OF PRACTICE VERSION 3.0 /2017 FOR REQUIRMENT.

METALCRAFT BEVELBACK WEATHERBOARD CLADDING

80

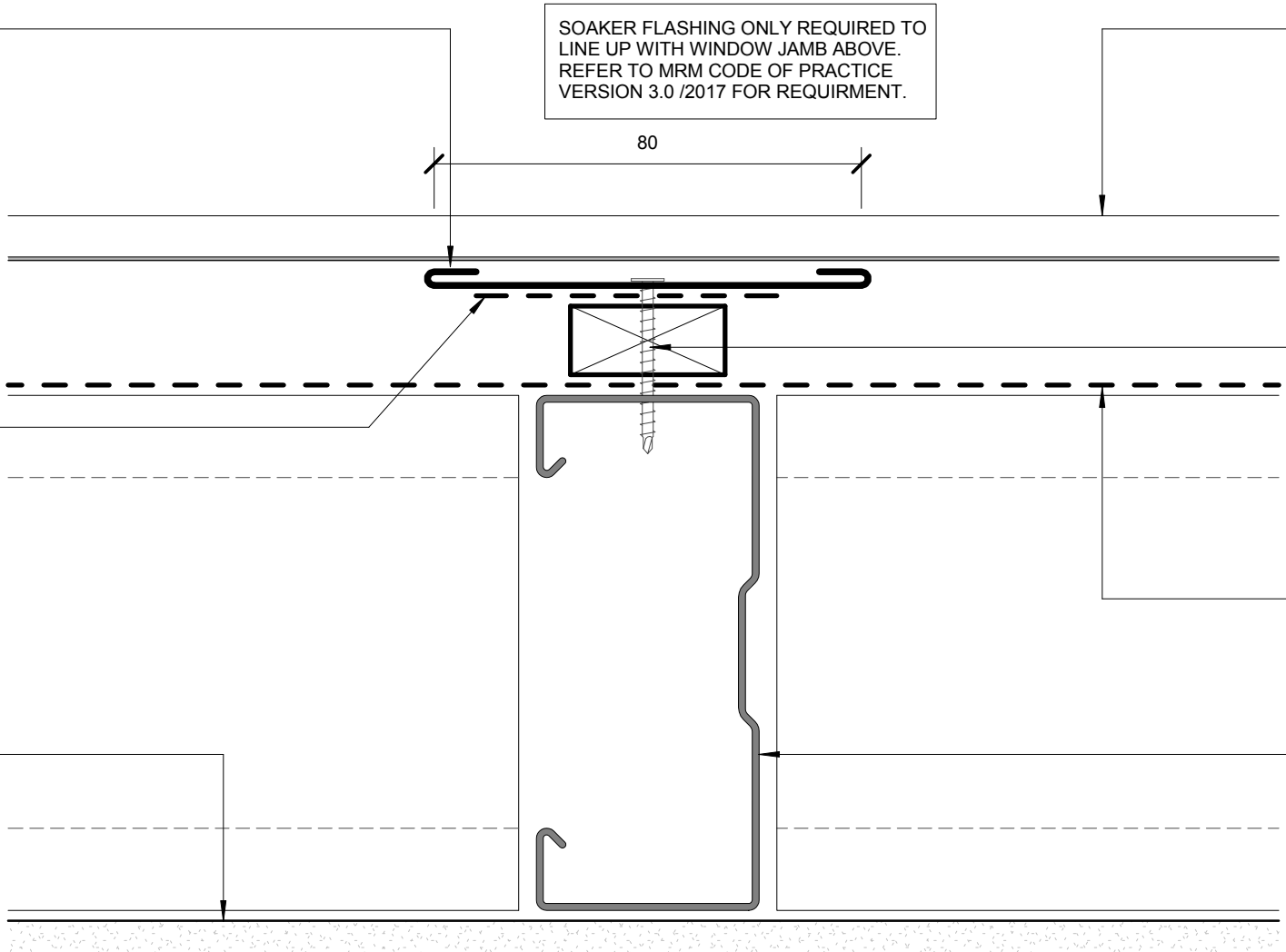
PERMEABLE WALL UNDERLAY TO PROVIDE SEPARATION OF FLASHING AND CLADDING WITH TIMBER, SHOWN DASHED

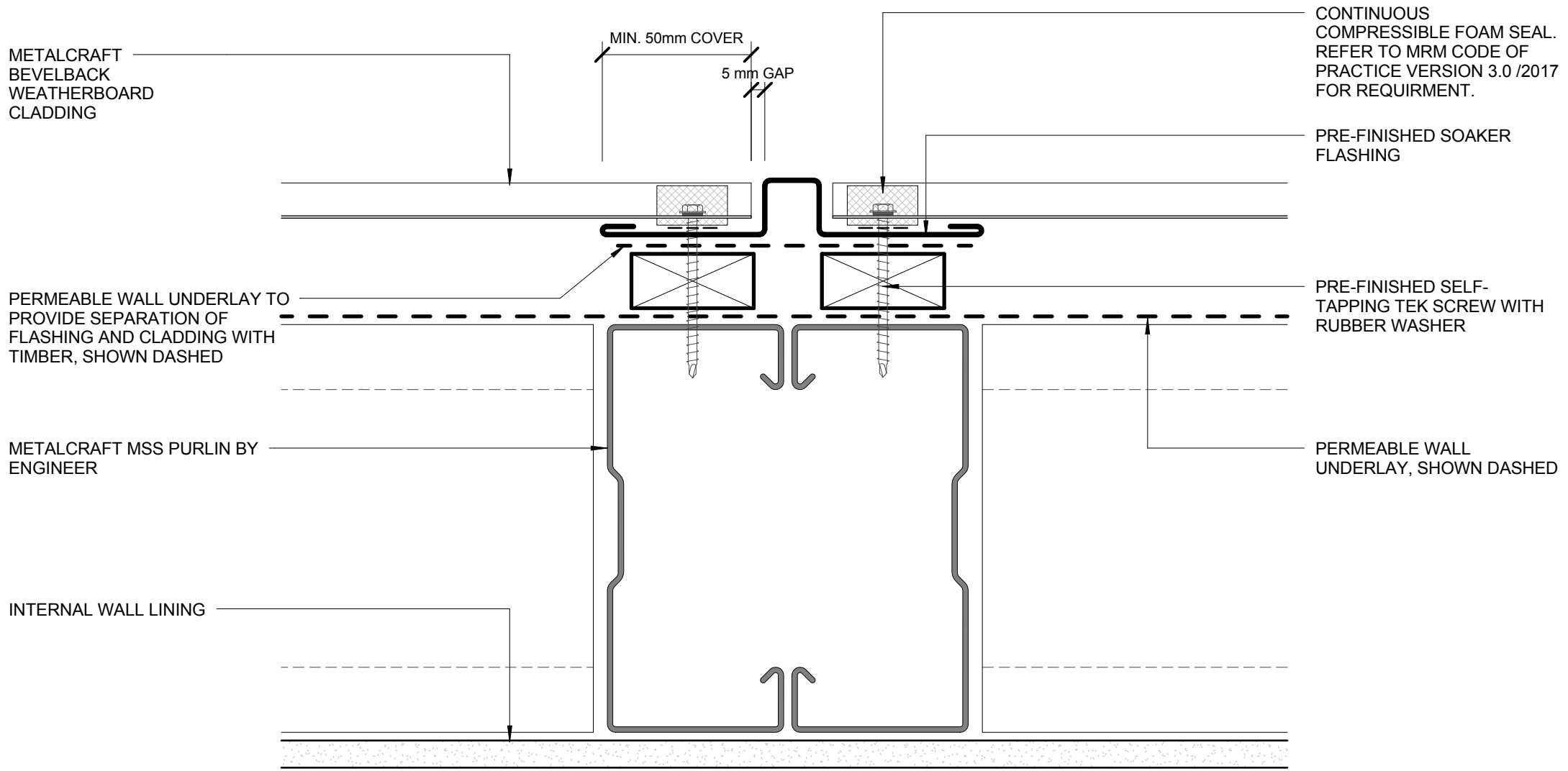
PRE-FINISHED SELF-TAPPING FLAT HEAD WAFER-TEK SCREW FOR FLASHING

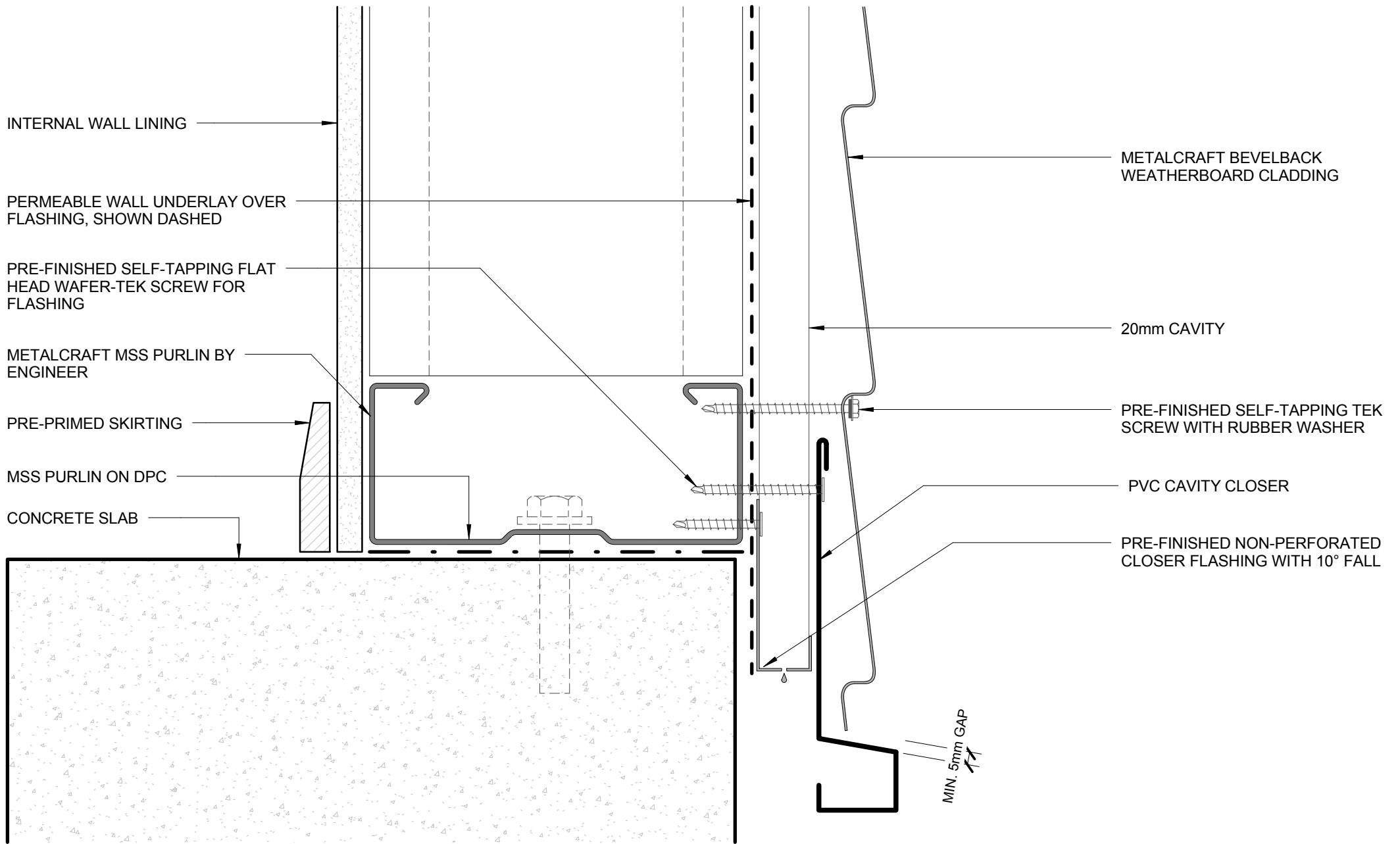
PERMEABLE WALL UNDERLAY, SHOWN DASHED

INTERNAL WALL LINING

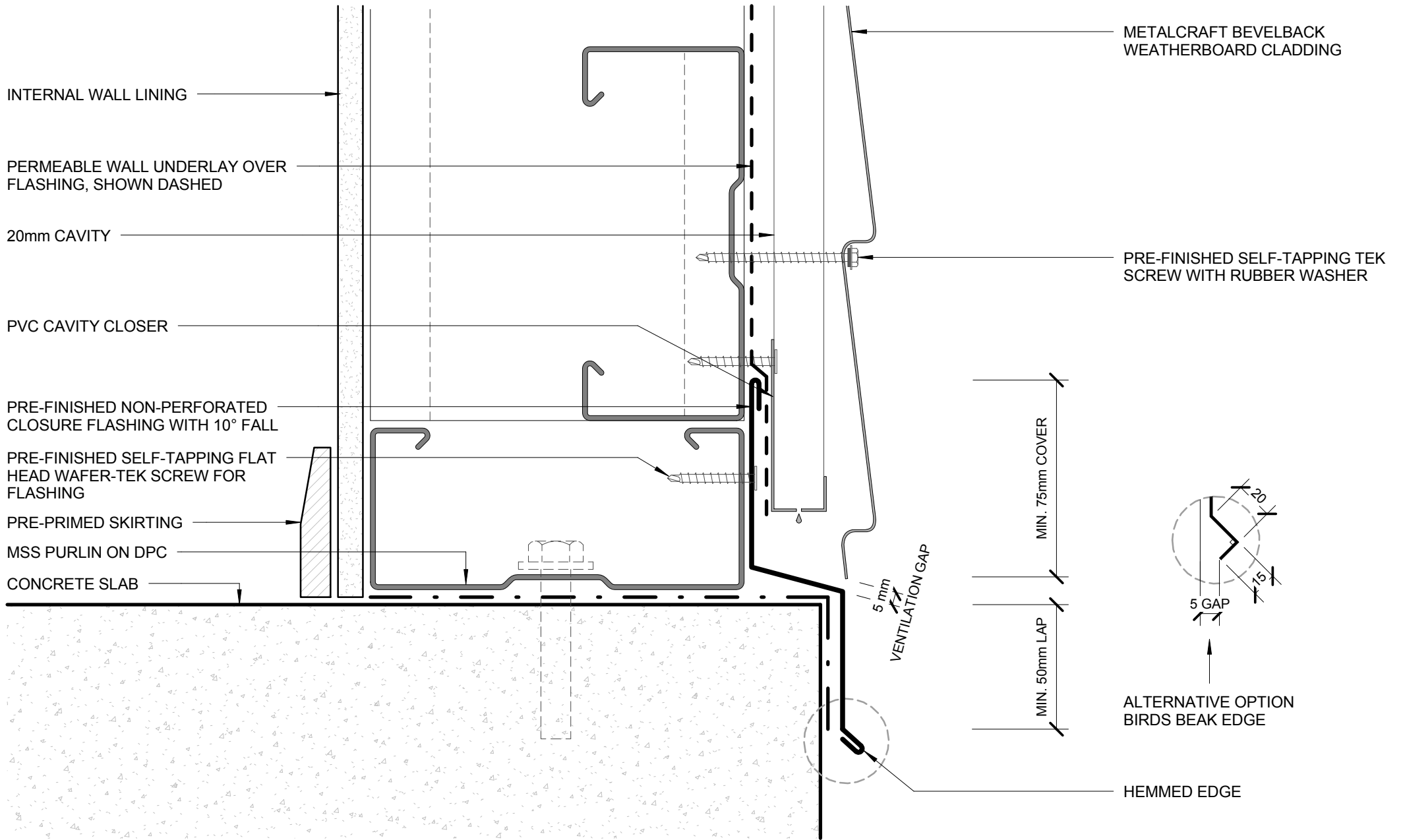
METALCRAFT MSS PURLIN BY ENGINEER







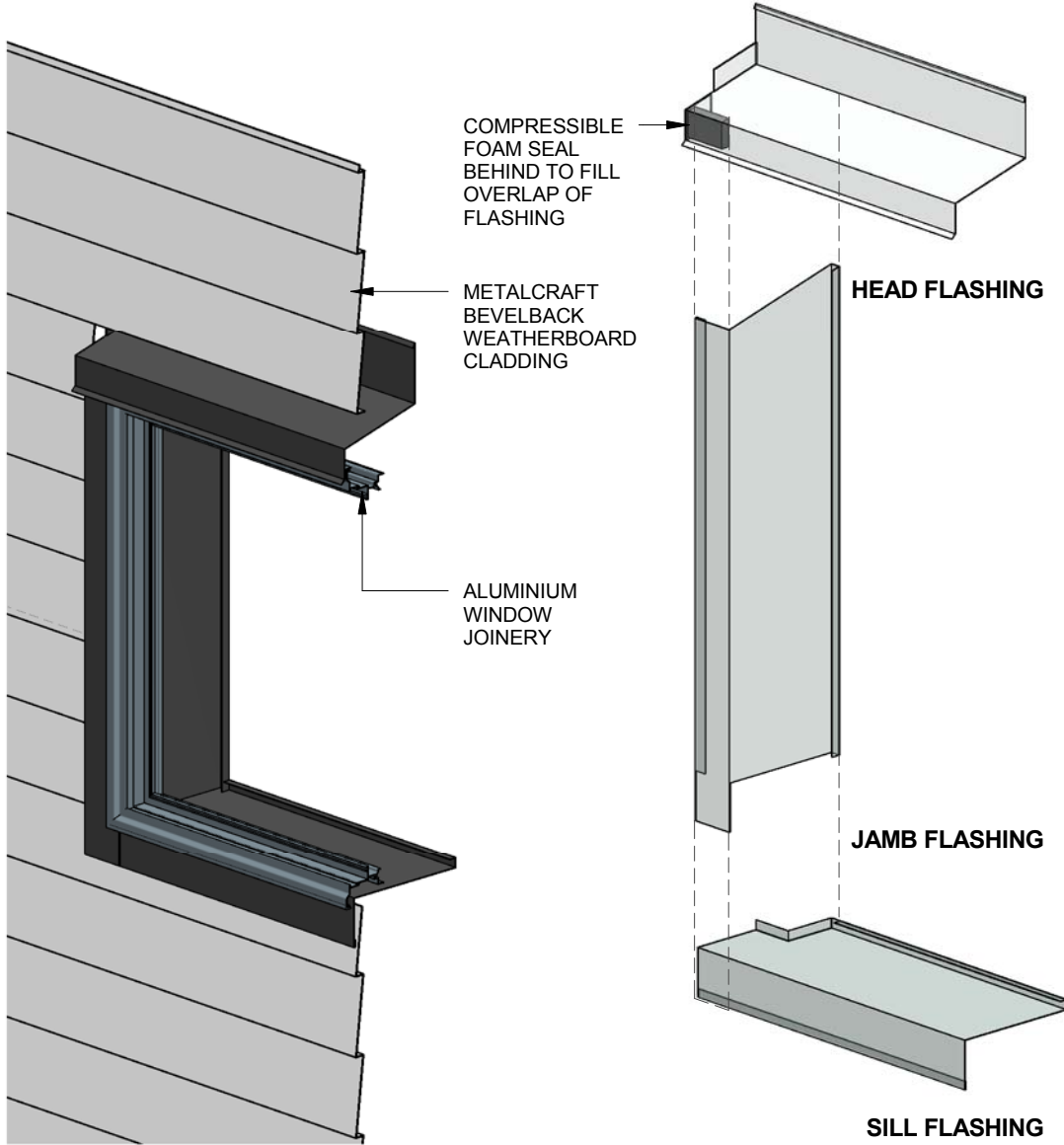
BOTTOM OF CLADDING (FLUSH)
COMMERCIAL HORIZONTAL CLADDING



BOTTOM OF CLADDING (RECESSED)

COMMERCIAL HORIZONTAL CLADDING

FLUSH WINDOW FLASHINGS



RECESSED WINDOW FLASHINGS

