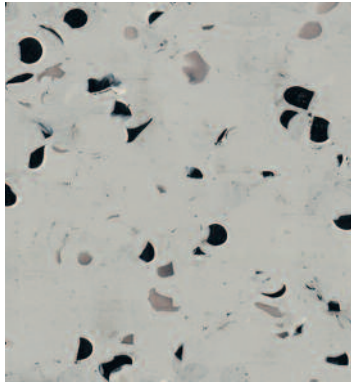


OHMEGA EC

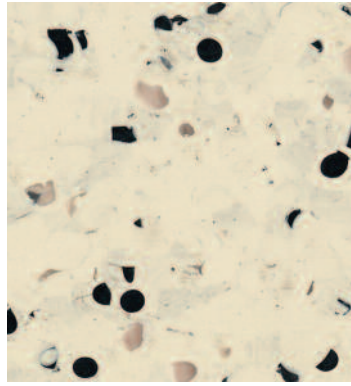


Thunderstorm 6002

w/r 6002

LRV 46.3

NCS S 2500-N

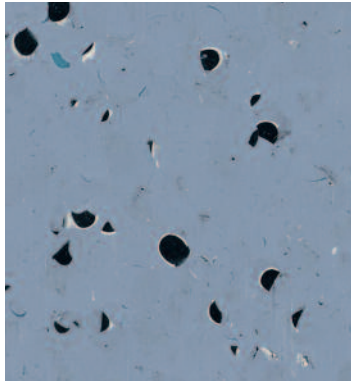


Warm Haze 6003

w/r 6003

LRV 65.4

NCS S 1005-Y30R

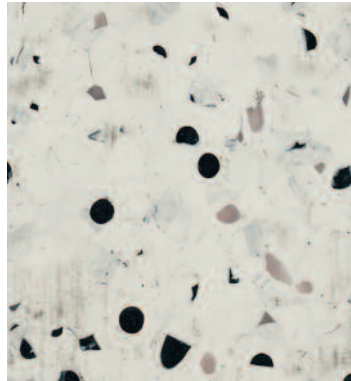


Tempest 6004

w/r 6004

LRV 33.1

NCS S 3020-R80B

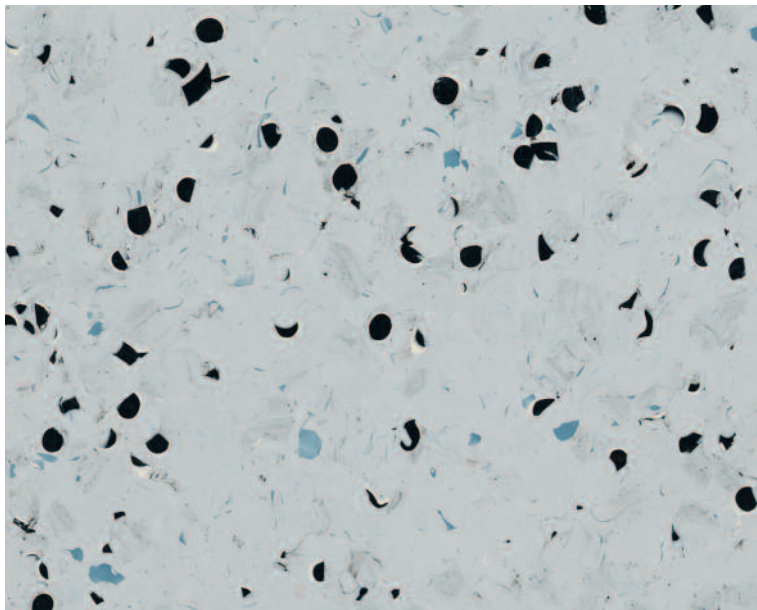


Frosty Glen 6005

w/r 9834

LRV 65.3

NCS S 1500-N



Morning Dew 6006

w/r 6006

LRV 52.5

NCS S 2005-R70B

The closest perceived NCS - Natural Colour System references are quoted for your convenience.
For more information see www.ncscolour.com
Light Reflectance Values (LRV) - all colours are tested in accordance with BS8300:2009.

POLYFLOR EC



Black/Grey 8990

NCS S 7502-B

w/r 8640

LRV 8.4

CONDUCTIVE ROF



Black 5980

w/r 8640

CI/SfB (43) Tn6

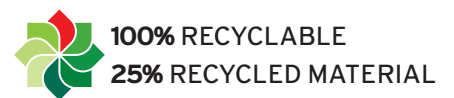


POLYFLOR

ESD

**OHMEGA EC
POLYFLOR EC
CONDUCTIVE ROF**

Hardwearing homogeneous contract sheet and tile floorcoverings with electrostatic conductive properties, engineered for ESD protection



†Refer to the BRE Green Guide for more details (www.thegreenguide.org.uk).

