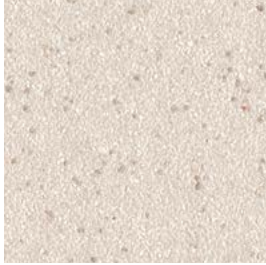


**BAREFOOT & SHOD, WET & DRY.**

SAFETY FLOORING



**Chalk Dune 5766 ▲** w/r 5766  
NCS S 1502-Y50R LRV 60.2



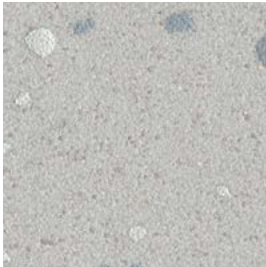
**Lunar Shell 5772 ▲** w/r 5772  
NCS S 1502-Y LRV 64.1



**Barley Cove 5761 ▲** w/r 5212  
NCS S 3005-Y50R LRV 46.8



**Truffle Shore 5762 ▲** w/r 5762  
NCS S 5005-Y50R LRV 24.3



**Sea Spray 5763 ▲** w/r 5202  
NCS S 3000-N LRV 49.3



**Sea Mist 5768** w/r 5205  
NCS S 2010-B LRV 46.0



**Calm Azure 5770** w/r 5206  
NCS S 2030-R90B LRV 30.9



**Deep Lagoon 5771** w/r 5207  
NCS S 6010-R90B LRV 11.6

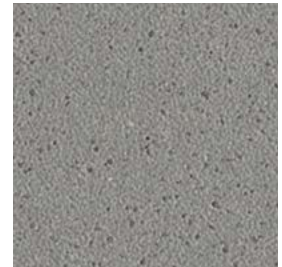


HSE Compliant  
**50+**  
Pendulum Wet Test

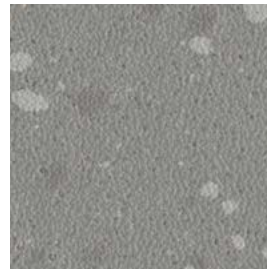
**Sustainable Slip Resistance**  
throughout product's guaranteed life



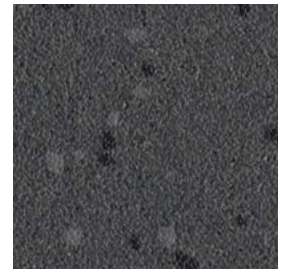
**Cool Pebble 5767** w/r 2090  
NCS S 3000-N LRV 45.9



**Slate Haze 5773** w/r 5764  
NCS S 5000-N LRV 20.0



**Coastal Flint 5764 ▲** w/r 5764  
NCS S 4500-N LRV 26.0



**Granite Sky 5765 ▲** w/r 4490  
NCS S 7502-B LRV 10.3

w/r = weld rod NCS = Natural Colour System LRV = Light Reflectance Value

▲ = These colours contain a tonal chipped decoration



Refer to BRE Global ratings on  
[www.greenbooklive.com](http://www.greenbooklive.com)



**100% RECYCLABLE**  
CONTAINS RECYCLED MATERIAL

