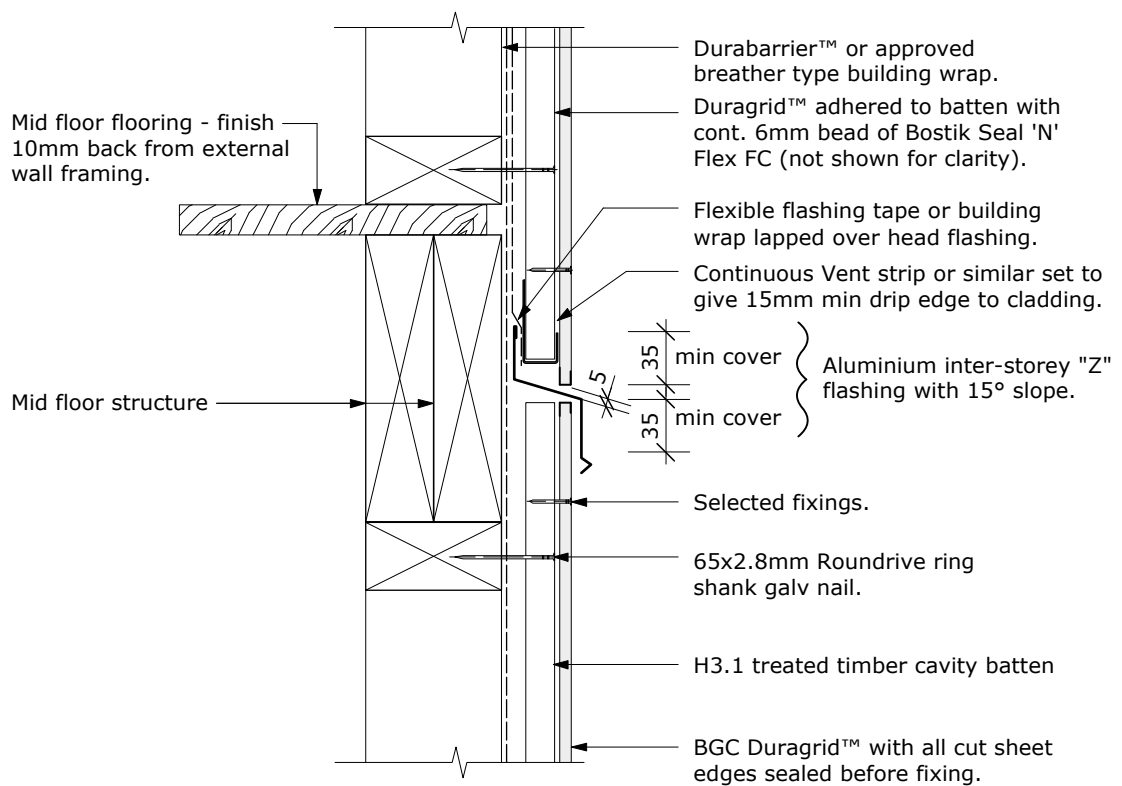


Cavity Batten Note:

Refer to cavity batten layout for batten sizes, types, spacings & fixings.



Note: Drained joints must be used to limit cavities to maximum 2 storeys or 7m in height in accordance with NZBC acceptable solution E2/AS1 Paragraph 9.1.9.4

PROFILE **BGC Duragrid™**

DATE Nov 2011

DETAIL **Cavity Drain Express Joint at Floor Joist**

SCALE 1:5 @ A4

DETAIL NO. **D 19**