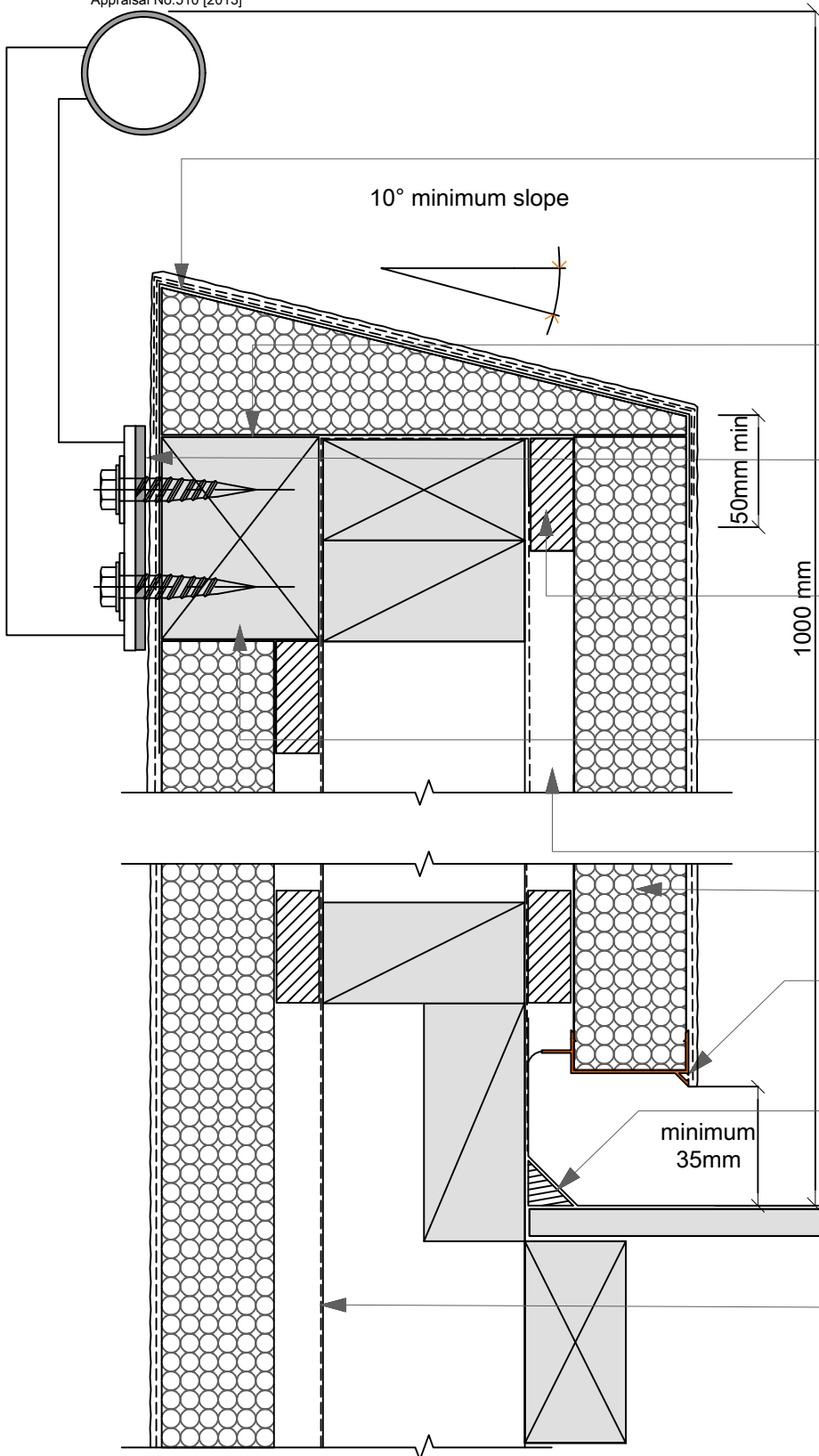


BRANZ Appraised
Appraisal No.510 [2013]



two layers of fibreglass mesh over surface of Protecto EIFS tape. Extend down each side minimum distance of 50mm.

timber block must be covered with a Protecto EIFS tape membrane patch covering EPS by a minimum of 50mm

3mm thick EPDM gasket between plaster and bracket

discontinuous horizontal 45mm x 20mm ventilated EPS battens on 15° slope and no longer than 100mm as required for fixing

dressed H3.1 fixing blocks must be placed at the front or back of wall by builder, not the top

20mm cavity

50mm EPS or 75mm Neopor® EPS

CAVITECLAD proprietary punched bead base

waterproof membrane to extend minimum 200mm up any vertical face and minimum 150mm behind cladding system

approved breather type building wrap to wrap over top of wall installed by others

note: if parapet wall top is wider than 300mm - it must have a minimum slope of 30°

13A

Wall: Balustrade Rail Fixing

SCALE: 1:3

CAVITECLAD