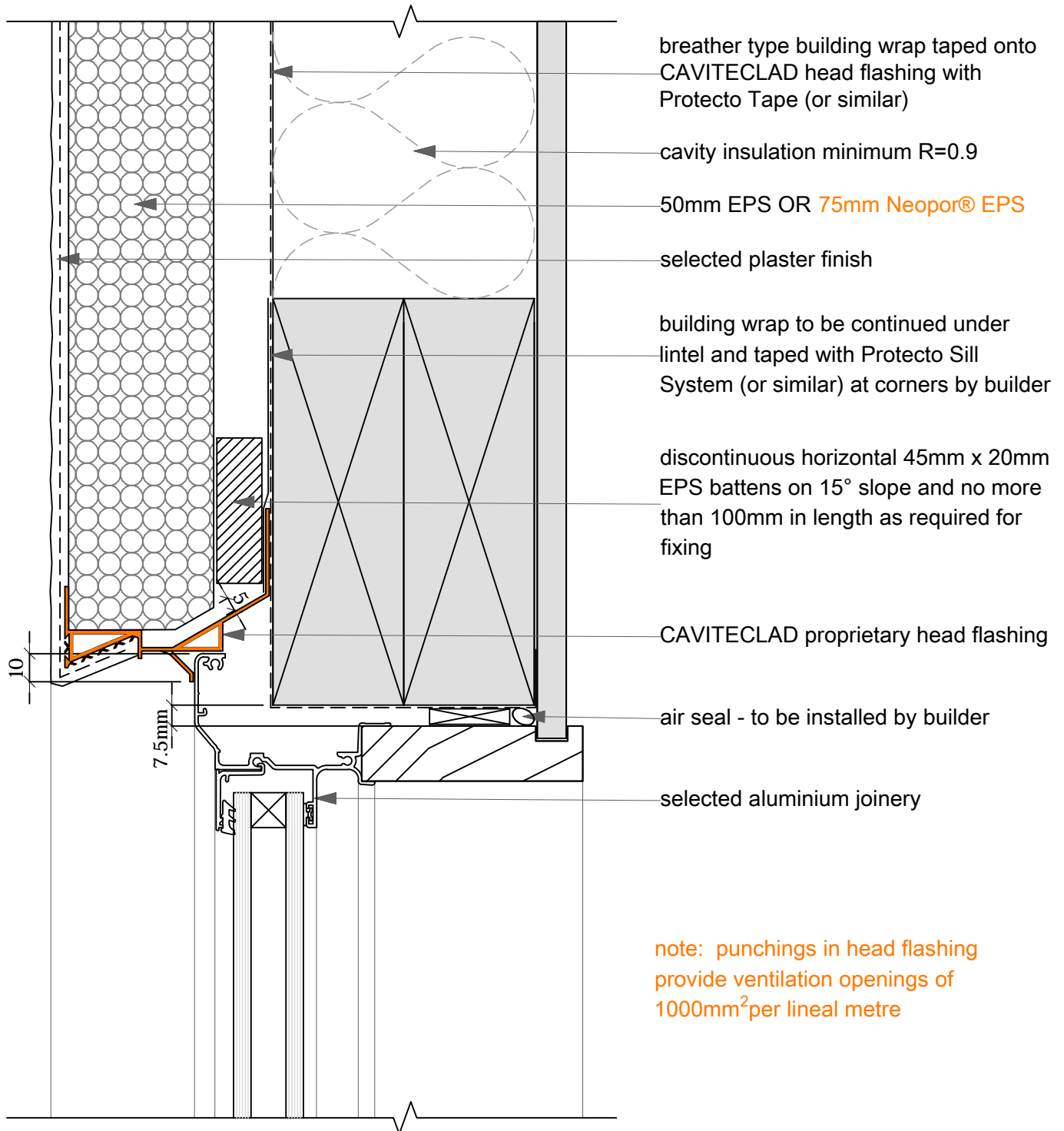


BRANZ Appraised
Appraisal No.510 [2013]



breather type building wrap taped onto
CAVITECLAD head flashing with
Protecto Tape (or similar)

cavity insulation minimum R=0.9

50mm EPS OR 75mm Neopor® EPS

selected plaster finish

building wrap to be continued under
intel and taped with Protecto Sill
System (or similar) at corners by builder

discontinuous horizontal 45mm x 20mm
EPS battens on 15° slope and no more
than 100mm in length as required for
fixing

CAVITECLAD proprietary head flashing

air seal - to be installed by builder

selected aluminium joinery

note: punchings in head flashing
provide ventilation openings of
1000mm² per lineal metre

01A
SCALE: 1:2

Window Head:
CAVITECLAD