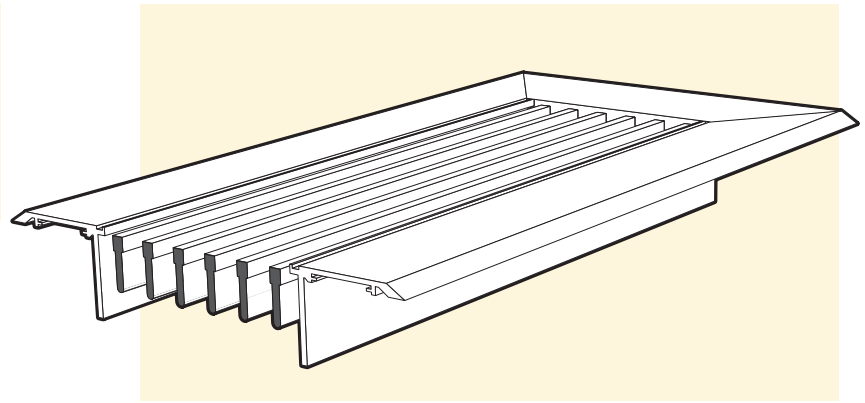
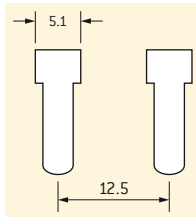


# LDH – Selection Data

Model: **LDH-1200/LDHF-1200**

0° deflection  
12.5mm spacing  
5.1mm louver



## Dimensions

D	A	Number of Bars
Listed Size	Opening	
50.0	21.0	2
62.5	33.5	3
75.0	46.0	4
87.5	58.5	5
100.0	71.0	6
125.0	96.0	8
150.0	121.0	10

The same basic design as Model LD-1200 Linear Diffusers except that the Standard fixed, bar-type louvers are heavier 5.1mm x 16mm as compared to 3.2mm x 16mm.

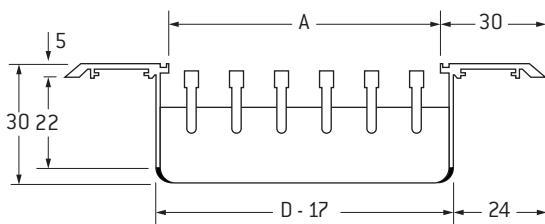
## Floor Application

Where required for floor use, specify LDHF-1200 to signify heavier construction.

LDHF-1200 grilles have double mullions and frame style 4 solid surround.

Continuous traffic maximum width 200mm.

Occasional traffic maximum width 300mm.



Size & Area m <sup>2</sup> /m	Total Pressure	3	6	10	16	23	31	40	51	63
50mm	Flow m <sup>3</sup> /s/m	0.028	0.042	0.056	0.070	0.084	0.098	0.111	0.126	0.140
	NC	-	-	-	18	23	28	32	35	38
0.015	Throw, Sill or Floor	0.3-0.3	1.2-1.2	2.1-2.1	2.7-3.0	3.0-4.0	4.0-4.9	4.3-5.5	4.6-6.1	5.2-6.4
	Side Wall	0.9-2.1	1.5-3.7	2.1-4.9	2.7-6.1	3.0-7.0	3.9-7.9	4.3-8.5	4.6-9.2	5.2-10.0
62.5mm	Flow m <sup>3</sup> /s/m	0.040	0.062	0.082	0.102	0.122	0.143	0.164	0.184	0.205
	NC	-	-	-	20	25	30	34	37	40
0.021	Throw, Sill or Floor	0.6-0.6	1.8-1.8	2.4-2.7	3.4-4.0	4.0-4.9	4.6-5.8	5.5-6.7	6.4-7.0	6.7-7.3
	Side Wall	1.2-2.7	1.8-3.7	2.4-5.2	3.4-6.7	4.0-7.6	4.6-8.5	5.5-9.8	6.4-11.0	6.7-11.9
75mm	Flow m <sup>3</sup> /s/m	0.054	0.082	0.109	0.136	0.164	0.191	0.219	0.245	0.273
	NC	-	-	-	21	26	31	35	38	41
0.029	Throw, Sill or Floor	0.6-0.6	2.1-2.1	3.0-3.4	3.7-4.6	4.6-5.5	5.5-6.4	6.1-7.3	7.3-7.6	7.9-8.2
	Side Wall	1.5-3.0	2.1-4.6	3.0-5.8	3.7-7.0	4.6-8.2	5.5-9.5	6.1-10.4	7.3-11.9	7.9-12.8
87.5mm	Flow m <sup>3</sup> /s/m	0.068	0.102	0.136	0.171	0.205	0.239	0.273	0.307	0.341
	NC	-	-	16	22	27	32	36	39	42
0.035	Throw, Sill or Floor	0.9-0.9	2.4-2.4	3.7-3.7	4.6-4.9	5.5-6.1	6.1-6.7	7.0-7.6	7.6-8.2	8.8-8.8
	Side Wall	1.5-3.0	2.7-4.9	3.7-6.1	4.6-7.6	5.5-8.5	6.1-9.8	7.0-11.0	7.6-12.2	8.8-13.4
100mm	Flow m <sup>3</sup> /s/m	0.082	0.124	0.164	0.206	0.248	0.288	0.330	0.370	0.403
	NC	-	-	17	23	28	33	37	40	43
0.041	Throw, Sill or Floor	0.9-0.9	2.7-2.7	4.0-4.0	4.9-5.2	6.1-6.4	6.7-7.3	7.3-7.9	8.5-8.5	9.5-9.5
	Side Wall	1.8-3.4	3.0-5.2	4.0-6.4	4.9-7.9	6.1-9.2	6.7-10.4	7.3-11.3	8.5-12.8	9.5-14.0
125mm	Flow m <sup>3</sup> /s/m	0.110	0.164	0.220	0.274	0.329	0.384	0.439	0.493	0.549
	NC	-	-	18	24	29	34	38	41	44
0.055	Throw, Sill or Floor	1.2-1.2	3.0-3.0	4.6-4.6	5.5-5.5	6.7-7.0	7.6-7.6	8.2-8.5	9.2-9.2	10.4-10.4
	Side Wall	2.4-4.0	3.4-5.5	4.6-7.0	5.5-8.2	6.7-9.8	7.6-11.3	8.2-12.2	9.2-13.4	10.4-14.6
150mm	Flow m <sup>3</sup> /s/m	0.138	0.206	0.276	0.344	0.412	0.481	0.550	0.629	0.689
	NC	-	-	19	25	30	35	39	42	45
0.069	Throw, Sill or Floor	1.5-1.5	3.0-3.0	4.6-4.6	5.8-5.8	7.0-7.0	7.6-7.6	8.8-8.8	9.5-9.5	11.0-11.0
	Side Wall	2.7-4.3	4.0-6.1	4.9-7.3	6.1-8.8	7.3-10.4	8.5-11.9	9.2-12.5	10.4-14.0	11.6-15.3

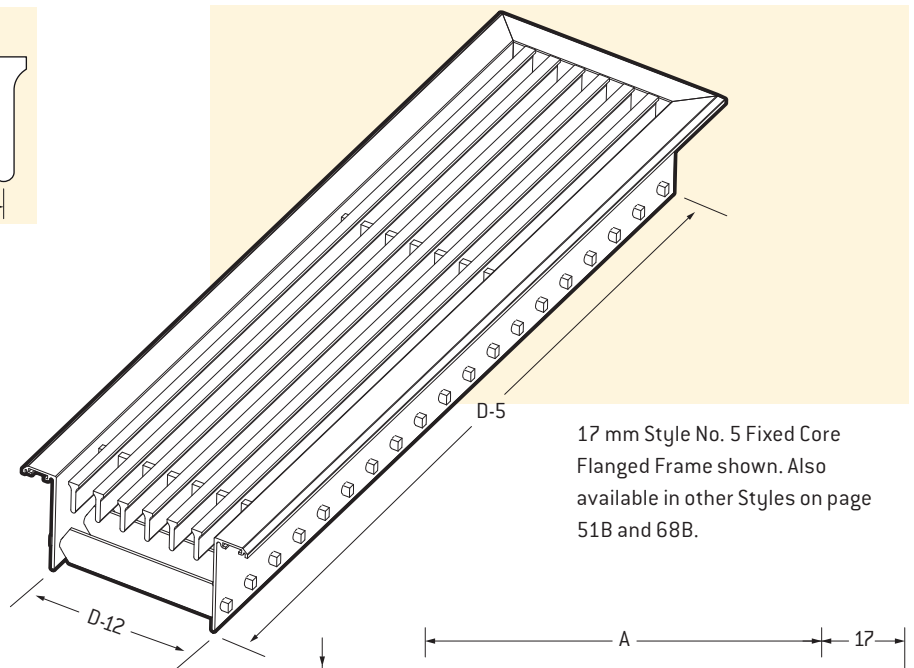
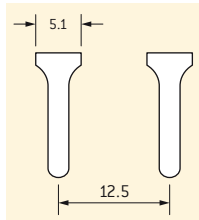
## Guide Product Weights

Model	Approximate Weight in Kg per metre x 150mm
LDH-1200	2.6
LDHF-1200	3.4

**Note:** Refer page 51B, Frame Style 4, for LDHF Surround.

**Model: LDH-1200SD**

- 0° deflection - front blades
- 0° - 45° deflection - rear blades
- 12.5mm spacing
- 5.1mm louver



17 mm Style No. 5 Fixed Core Flanged Frame shown. Also available in other Styles on page 51B and 68B.

**Dimensions**

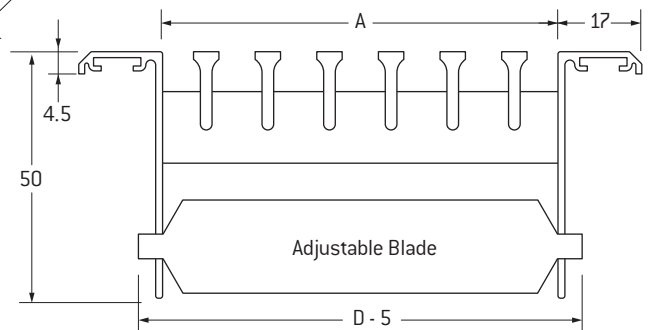
D	A	Number of Bars
Listed Size	Opening	
50	30	2
75	55	4
100	80	6
125	105	8
150	130	10
200	180	14
250	230	18
300	280	22
350	330	26

The same basic design as Model LD-1200SD Linear Bar Grille except that the standard fixed bar type louvers are heavier 5.1mm x 16mm as compared to 3.2mm x 16mm.

The LDSD is available in any desired length and can also be supplied with alternative frame types including the PMF system.

When used with the PMF System, see notes on page 68B.

**Not suitable for floor applications.**



Size	Total Pressure Pa	0°	3	6	10	16	23	31	40	51	63
		22.5°	5	8	14	21	30	36	59	75	99
		45°	5	9	15	23	33	45	72	91	117
50 mm	Flow m <sup>3</sup> /s/m	0.028	0.042	0.056	0.070	0.084	0.098	0.111	0.126	0.140	
	NC	-	-	-	18	23	28	32	35	38	
	Throw, m	0.9-2.1	1.5-3.7	2.1-4.9	2.7-6.1	3.0-7.0	3.9-7.9	4.3-8.5	4.6-9.2	5.2-10.0	
100 mm	Flow m <sup>3</sup> /s/m	0.082	0.124	0.164	0.206	0.248	0.288	0.330	0.370	0.403	
	NC	-	-	17	23	28	33	37	40	43	
	Throw, m	1.8-3.4	3.0-5.2	4.0-6.4	4.9-7.9	6.1-9.2	6.7-10.4	7.3-11.3	8.5-12.8	9.5-14.0	
150 mm	Flow m <sup>3</sup> /s/m	0.138	0.206	0.276	0.344	0.412	0.481	0.55	0.629	0.689	
	NC	-	-	19	25	30	35	39	42	45	
	Throw, m	2.7-4.3	4.0-6.1	4.9-7.3	6.1-8.8	7.3-10.4	8.5-11.9	9.2-12.5	10.4-14.0	11.6-15.3	
200 mm	Flow m <sup>3</sup> /s/m	0.164	0.248	0.328	0.412	0.496	0.576	0.660	0.740	0.806	
	NC	-	-	20	26	31	35	40	43	46	
	Throw, m	3.3-4.9	5.2-7.3	5.5-7.9	7.3-10.0	8.5-11.6	10.3-13.1	11.2-13.9	12.8-15.8	14.0-16.7	
250 mm	Flow m <sup>3</sup> /s/m	0.221	0.338	0.445	0.552	0.669	0.774	0.882	0.998	1.092	
	NC	-	-	20	26	31	35	40	43	46	
	Throw, m	3.9-5.5	6.4-7.7	6.6-8.5	7.1-11.2	9.7-12.8	12.1-14.3	13.2-15.3	15.2-17.6	16.4-18.1	
300 mm	Flow m <sup>3</sup> /s/m	0.276	0.412	0.552	0.688	0.824	0.962	1.100	1.258	1.378	
	NC	-	19	22	26	32	36	40	43	47	
	Throw, m	4.5-6.1	7.6-8.5	8.2-9.1	9.7-12.4	10.9-14.0	13.9-15.5	15.2-16.7	17.6-19.4	18.8-20.7	
350 mm	Flow m <sup>3</sup> /s/m	0.302	0.454	0.604	0.756	0.908	1.058	1.210	1.370	1.496	
	NC	-	19	22	27	32	36	41	43	47	
	Throw, m	5.1-6.7	8.8-9.3	9.3-9.7	10.9-13.6	12.1-15.2	15.7-16.7	17.2-18.1	20.0-21.2	21.2-22.5	

**Note**

1. For deflection settings of 22.5 and 45 degrees, increase the stated sound levels by 1 and 7 NC respectively.
2. For deflection settings of 22.5 and 45 degrees, decrease the stated throws to 80% and 50% respectively. Refer to page 202E.

Guide Product Weights	
Model	Approximate Weight in Kg per metre x 150mm
LDH-1200SD	3.2