

RHEEM 610 SERIES

SUITED TO INTEGRATION
WITH ALMOST ANY SYSTEM



LARGER
ANODE

50 mm
HIGH FLOW
CONNECTION

NO
PRESSURE
DROP



The work-horse storage system that keeps on working, in a wider range of water quality environments.

Flexible

Compatible with CFWH, Raypak, solar preheat and heat pump storage or as additional storage for a Rheem gas or electric hot water system.

Highly durable in poor water quality areas

Manufactured with commercial grade vitreous enamel and larger anode.

Stable pressure

No coils means there's virtually no pressure drop.

More key features

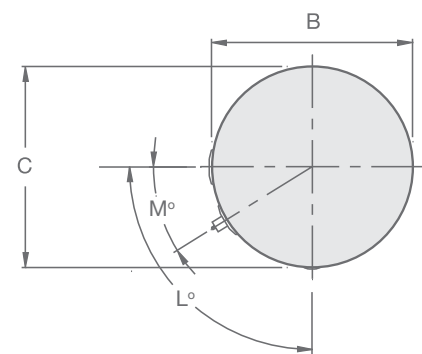
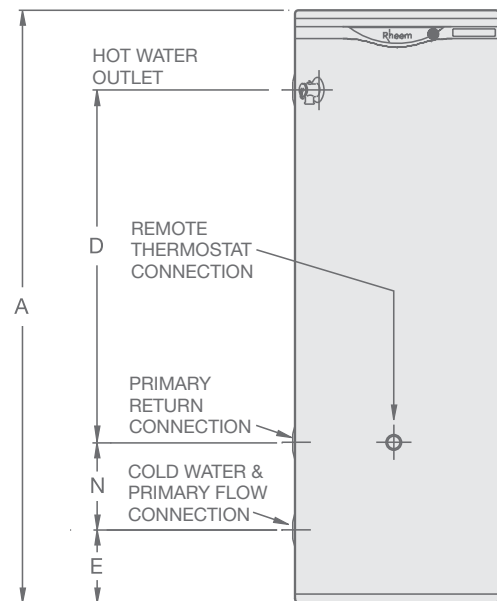
- Suitable for up to 82° C for sanitising applications
- Range of sizes
- 50mm high flow water connections
- Ease of fitment and replacement



Rheem 610 Series warranty: 5 years on cylinder, 1 year on parts & labour

TECHNICAL DATA

DIMENSIONS AND TECHNICAL DATA TABLE				
Model number			A610340	A610430
			vitreous enamel	
Storage capacity	Litres		325	410
Dimensions	A	mm	1640	1840
	B	mm	640	685
	C	mm	640	685
	D	mm	1008	1210
	E	mm	115	108
	F	mm	-	-
	G	mm	-	-
	H	mm	-	-
	J	mm	290	273
	P	mm	-	-
Q	mm	-	-	
K	degrees	-	-	
L	degrees	90°	84°	
M	degrees	32°	30°	
N	mm	290	273	
Weight Empty	kg		96	117
Inlet/Outlet Connections (BSPF)			RP2	RP2
T&PR Valve Connection (BSPF)			RP $\frac{3}{4}$	RP $\frac{3}{4}$
Vent Connection (BSPF)			-	-
Drain Connection (BSPF)			-	-
Remote Thermostat Connection (1 x thermowell supplied)			RP $\frac{1}{2}$	RP $\frac{1}{2}$
T&PR Valve Setting	kPa		1000	1000
Expansion Control Valve (ECV)* Setting	kPa		850	850
Maximum Water Supply Pressure				
without ECV* fitted	kPa		800	800
with ECV* fitted	kPa		680	680
Maximum Stored Water Temperature	°C		82	82
Manifold – Min. Centre to Centre	mm		890	935
Maintenance Rate	kWH/day		3.1	4.3



*Expansion control valve (ECV) not supplied with the water heater.