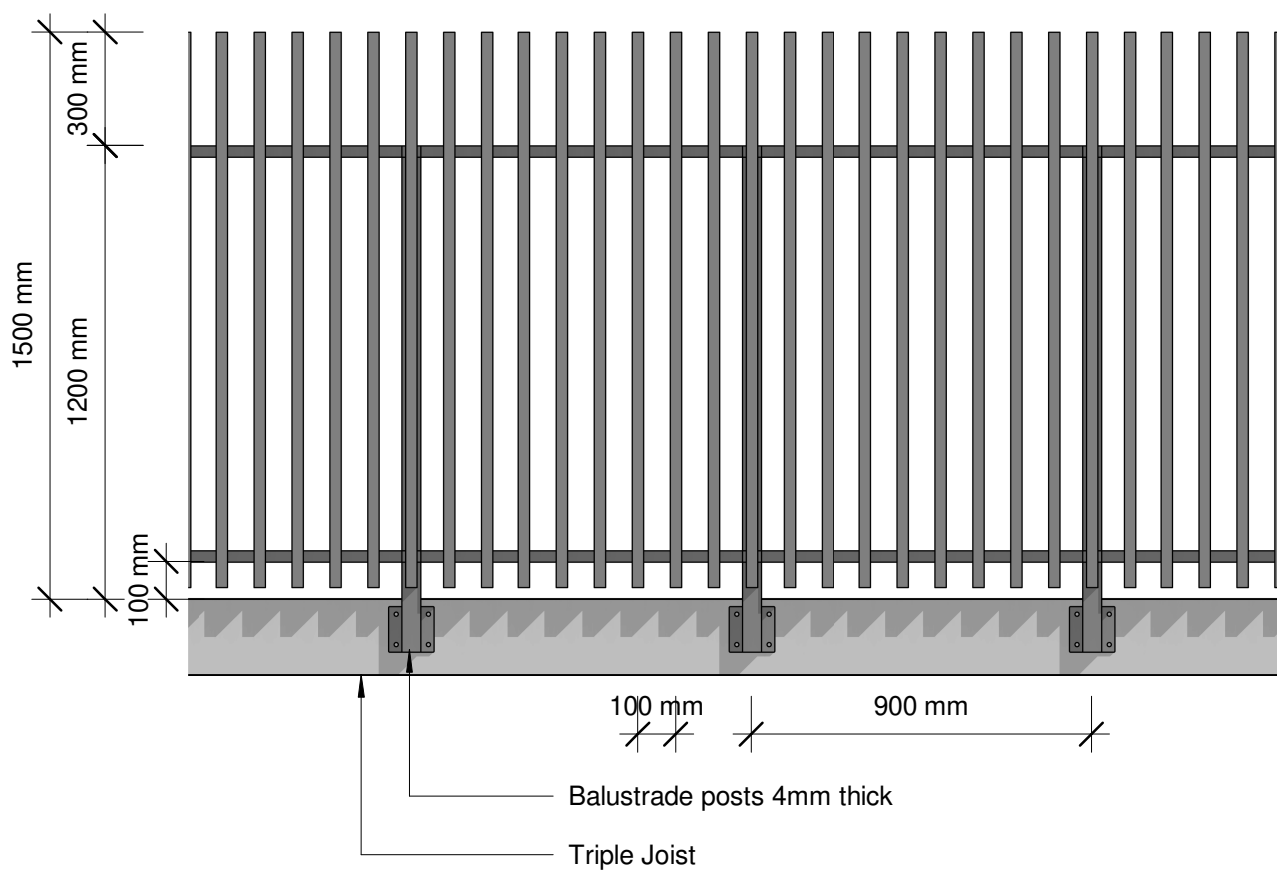


Plan



Elevation

Plot Date: 02 May 2019 11:37

© 2019. The copyright of this document is the property of Glass Vice Limited and shall not be reproduced, copied, loaned or disposed of directly, or indirectly, nor used for any purpose other than that for which it is specifically furnished without prior consent.

All dimensions in millimetres

GLASS
VICE

Vertical Battens

1500mm High Face Fixed

Elevation - Face Fix 1.5M Balustrade Vertical Batten

Date: 10 April 2019

Scale: 1 : 20

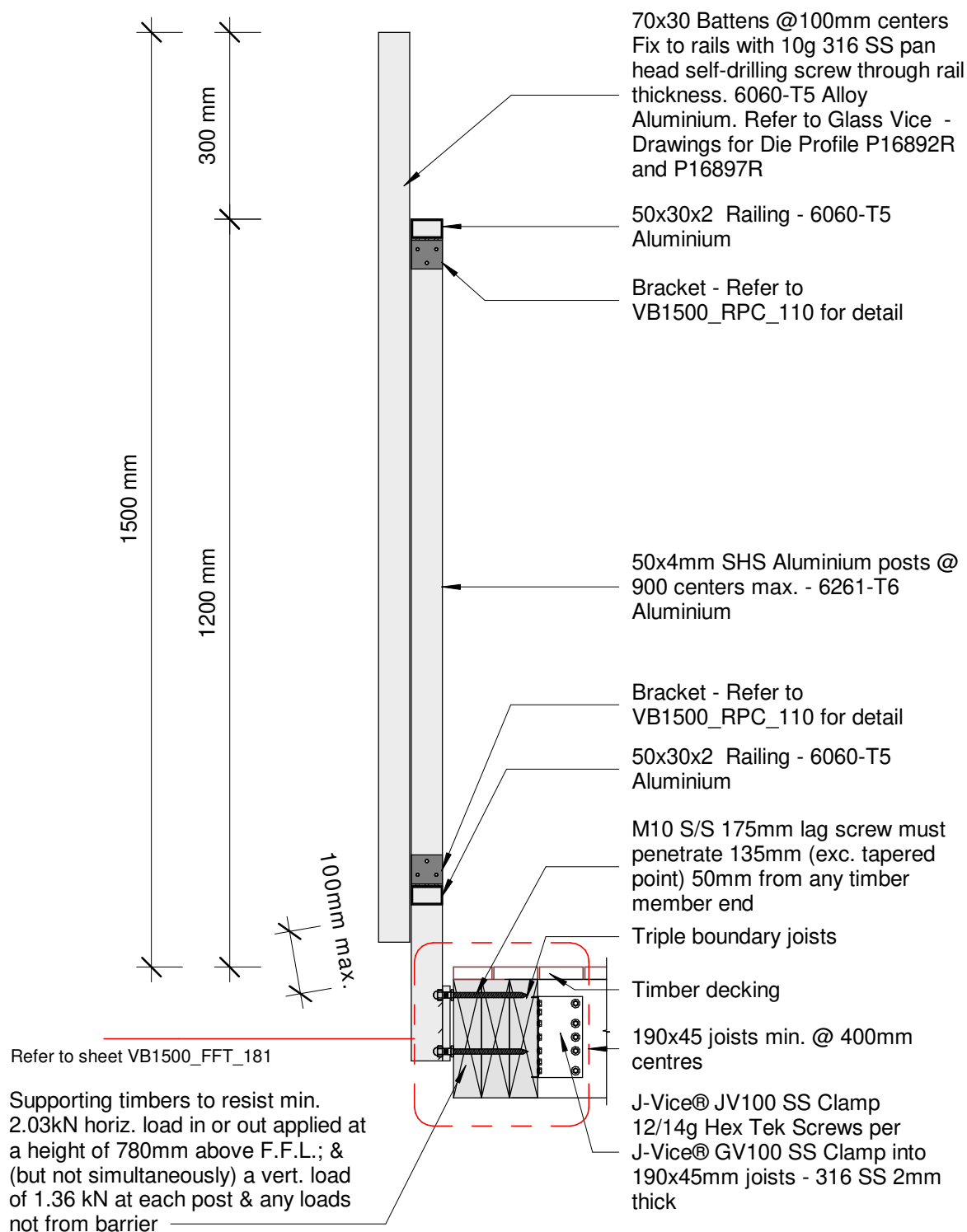
Issue 01

www.glassvice.com

Phone +64 9 414 6565

info@glassvice.com

VB1500_110



Plot Date: 02 May 2019 11:37

© 2019. The copyright of this document is the property of Glass Vice Limited and shall not be reproduced, copied, loaned or disposed of directly, or indirectly, nor used for any purpose other than that for which it is specifically furnished without prior consent.

All dimensions in millimetres

GLASS
VICE®

Vertical Battens

1500mm High Face Fixed into Timber

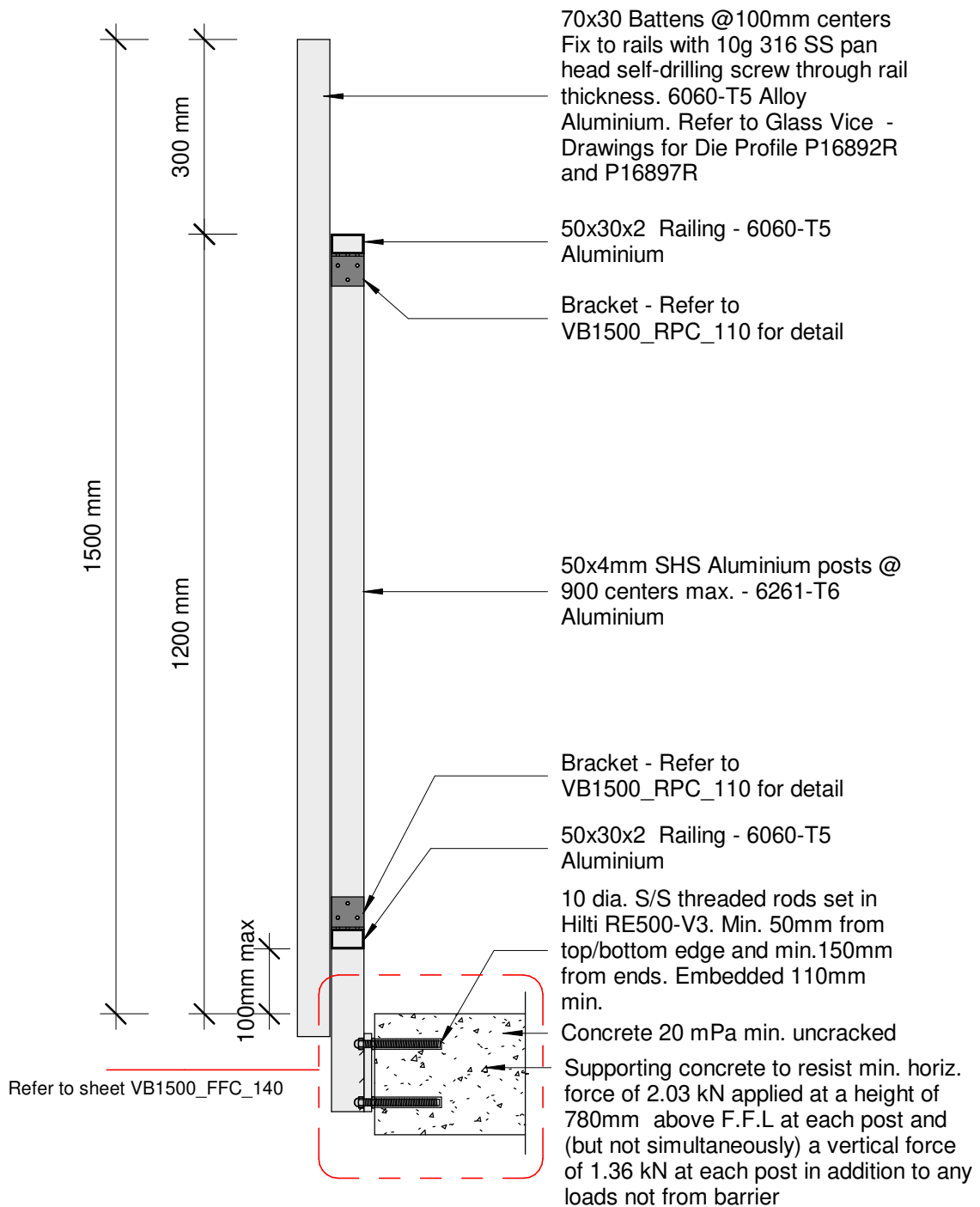
Section - Face Fix 190 Triple Joist 1.5M Residential Barrier

Date: 10 April 2019
Scale: 1 : 10

Issue 01

www.glassvice.com
Phone +64 9 414 6565
info@glassvice.com

VB1500_130



Plot Date: 02 May 2019 11:37

© 2019. The copyright of this document is the property of Glass Vice Limited and shall not be reproduced, copied, loaned or disposed of directly, or indirectly, nor used for any purpose other than that for which it is specifically furnished without prior consent.

All dimensions in millimetres



Vertical Battens

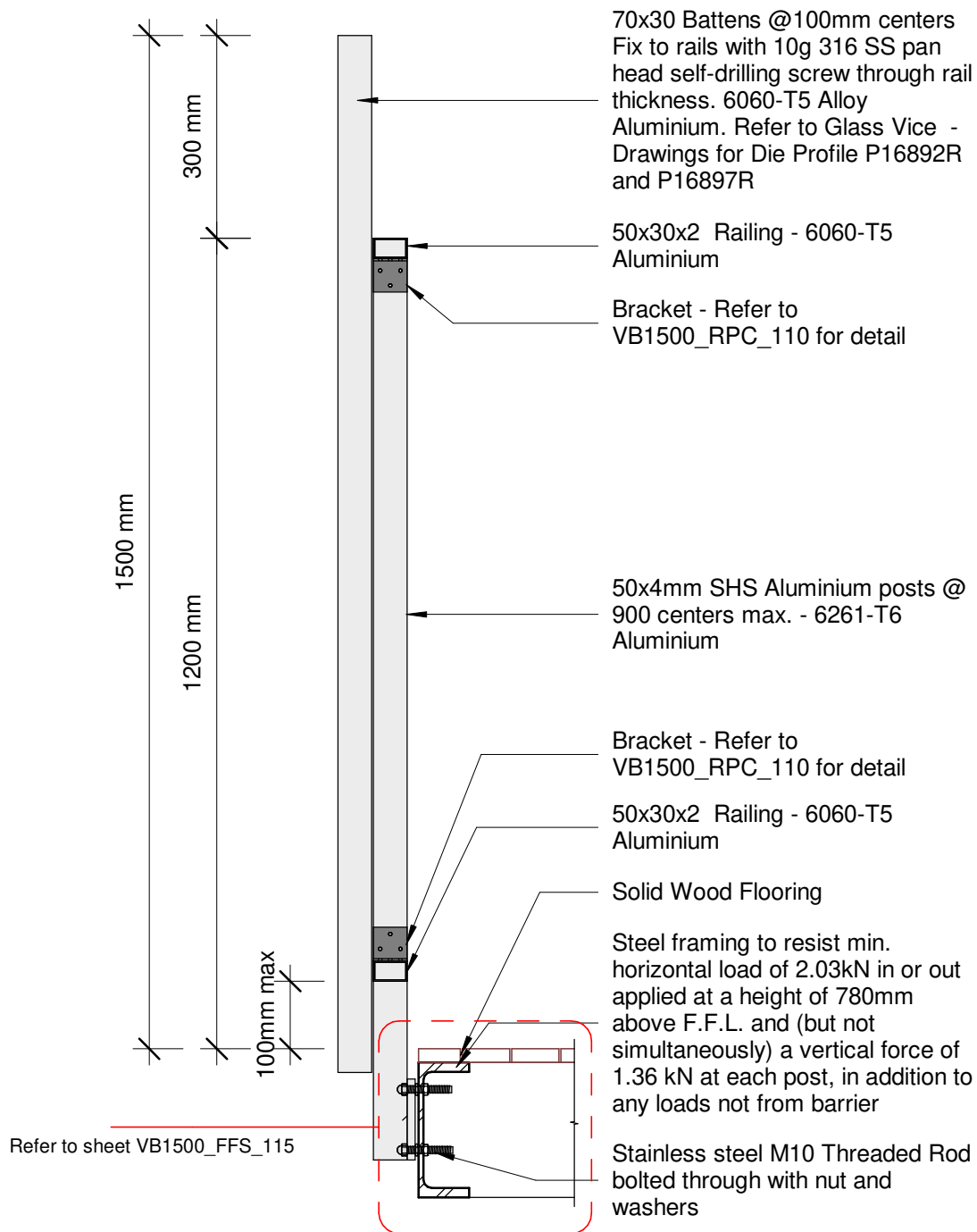
1500mm High Face Fix into Concrete

Section - Face Fix Concrete 1.5M Residential Barrier

Date: 10 April 2019
Scale: 1 : 10
Issue 01

www.glassvice.com
Phone +64 9 414 6565
info@glassvice.com

VB1500_131



Plot Date: 02 May 2019 11:37

© 2019. The copyright of this document is the property of Glass Vice Limited and shall not be reproduced, copied, loaned or disposed of directly, or indirectly, nor used for any purpose other than that for which it is specifically furnished without prior consent.

All dimensions in millimetres



Vertical Battens

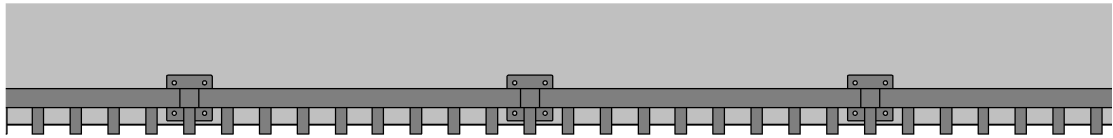
1500mm High Face Fixed into Steel Beam

Section - Face Fix Steel Beam 1.5M Residential Barrier

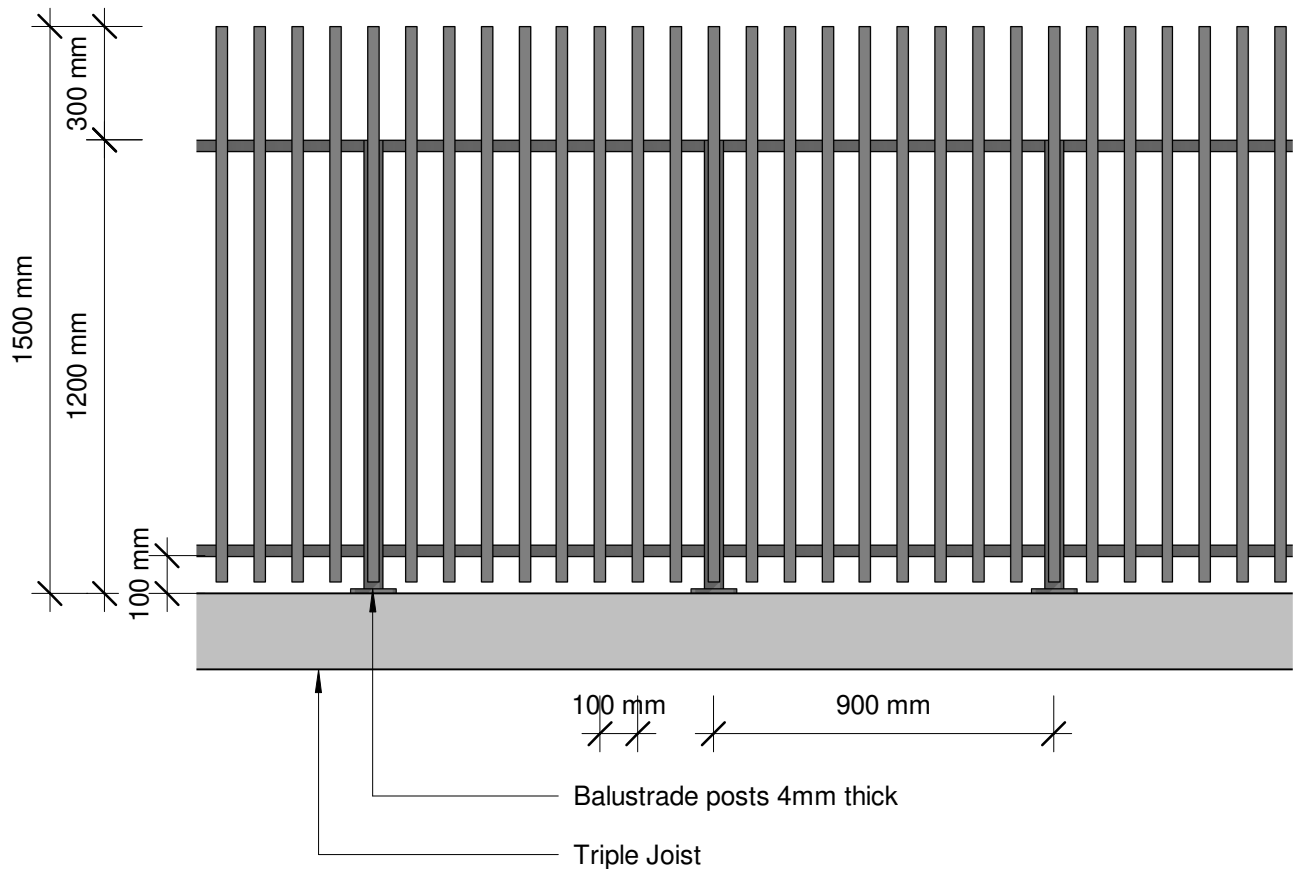
Date: 10 April 2019
Scale: 1 : 10
Issue 01

www.glassvice.com
Phone +64 9 414 6565
info@glassvice.com

VB1500_132



Plan



Elevation

Plot Date: 02 May 2019 11:37

© 2019. The copyright of this document is the property of Glass Vice Limited and shall not be reproduced, copied, loaned or disposed of directly, or indirectly, nor used for any purpose other than that for which it is specifically furnished without prior consent.

All dimensions in millimetres



Vertical Battens

1500mm High Top Fixed

Elevation - Top Fix 1.5M Residential Barrier

Date: 10 April 2019

Scale: 1 : 20

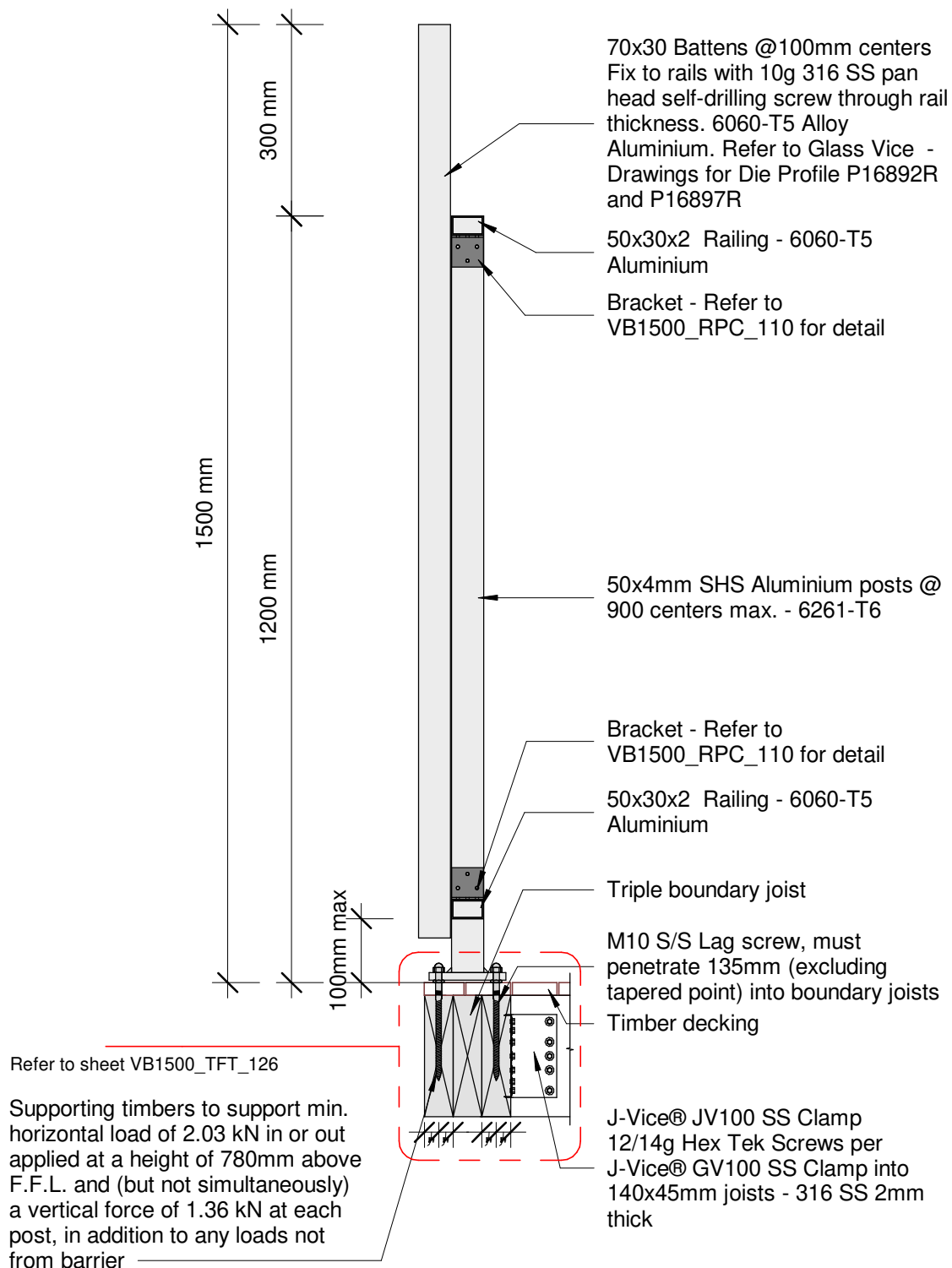
Issue 01

www.glassvice.com

Phone +64 9 414 6565

info@glassvice.com

VB1500_210



Plot Date: 02 May 2019 11:37

© 2019. The copyright of this document is the property of Glass Vice Limited and shall not be reproduced, copied, loaned or disposed of directly, or indirectly, nor used for any purpose other than that for which it is specifically furnished without prior consent.

All dimensions in millimetres



Vertical Battens

1500mm High Top Fixed into Timber

Section - Top Fix 190 Triple Joist 1.5M Residential Barrier

Date: 10 April 2019

Scale: 1 : 10

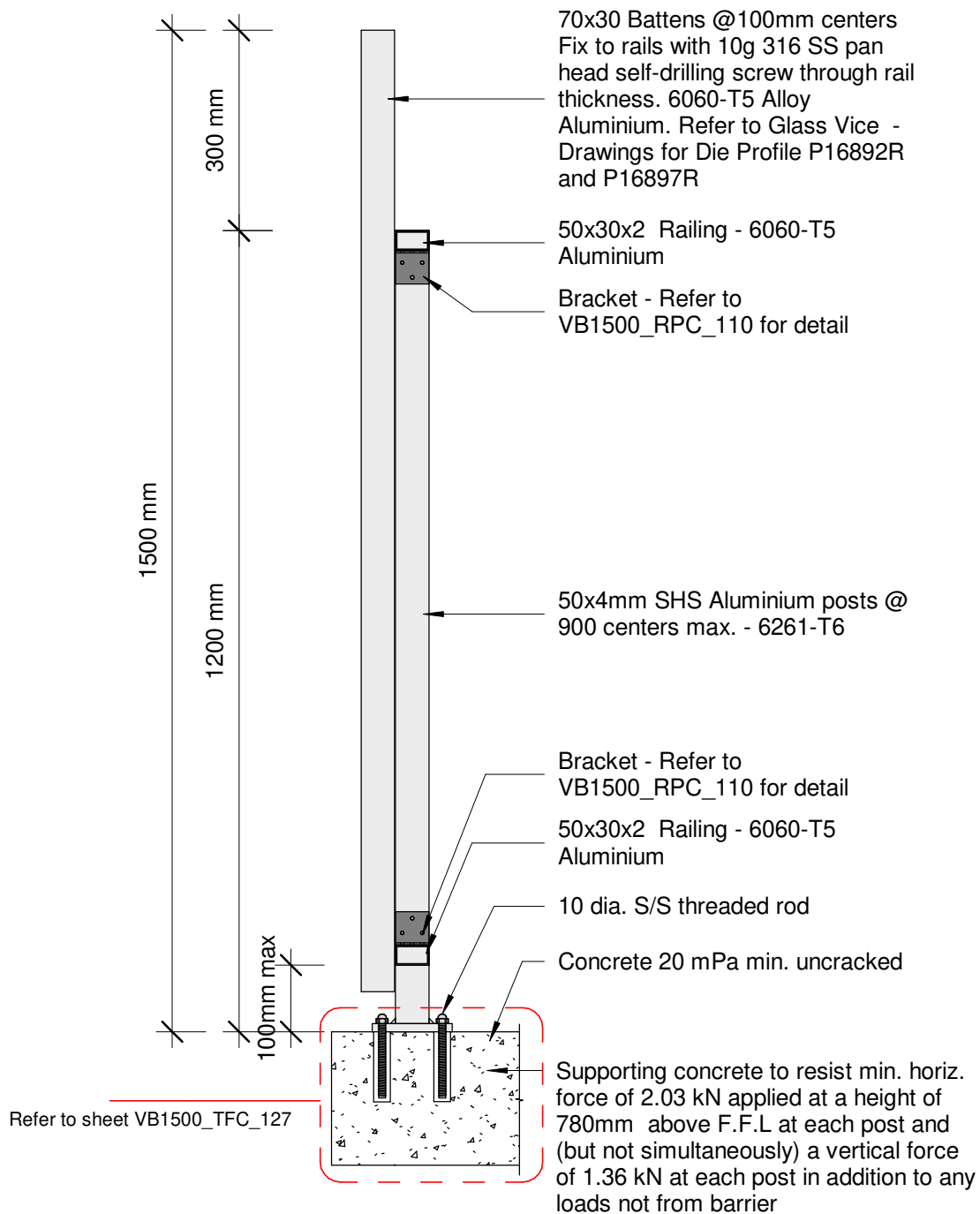
Issue 01

www.glassvice.com

Phone +64 9 414 6565

info@glassvice.com

VB1500_220



Plot Date: 02 May 2019 11:37

© 2019. The copyright of this document is the property of Glass Vice Limited and shall not be reproduced, copied, loaned or disposed of directly, or indirectly, nor used for any purpose other than that for which it is specifically furnished without prior consent.

All dimensions in millimetres



Vertical Battens

1500mm High Top Fixed into Concrete

Section - Top Fix Concrete 1.5M Residential Barrier

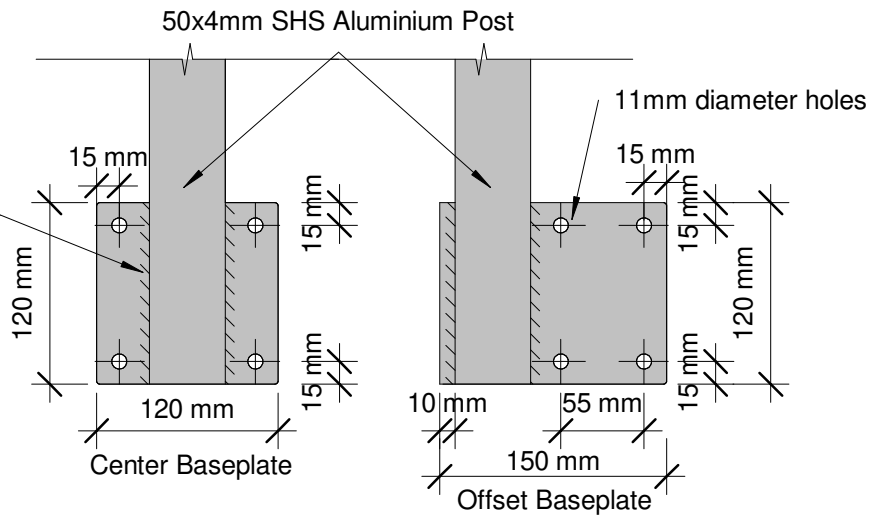
Date: 10 April 2019
Scale: 1 : 10
Issue 01

www.glassvice.com
Phone +64 9 414 6565
info@glassvice.com

VB1500_230

12mm Baseplate - 5083-H321,
H116 Alloy Aluminium 120mm long
8mm fillet weld (leg size, equal)
each side of post with 5356 alloy

Note:
Supporting concrete to resist min. horiz.
force of 2.03 kN applied at a height of
780mm above F.F.L at each post and
(but not simultaneously) a vertical force
of 1.36 kN at each post in addition to any
loads not from barrier



50x4mm SHS Aluminium posts @
900 centers max. - 6261-T6
Aluminium

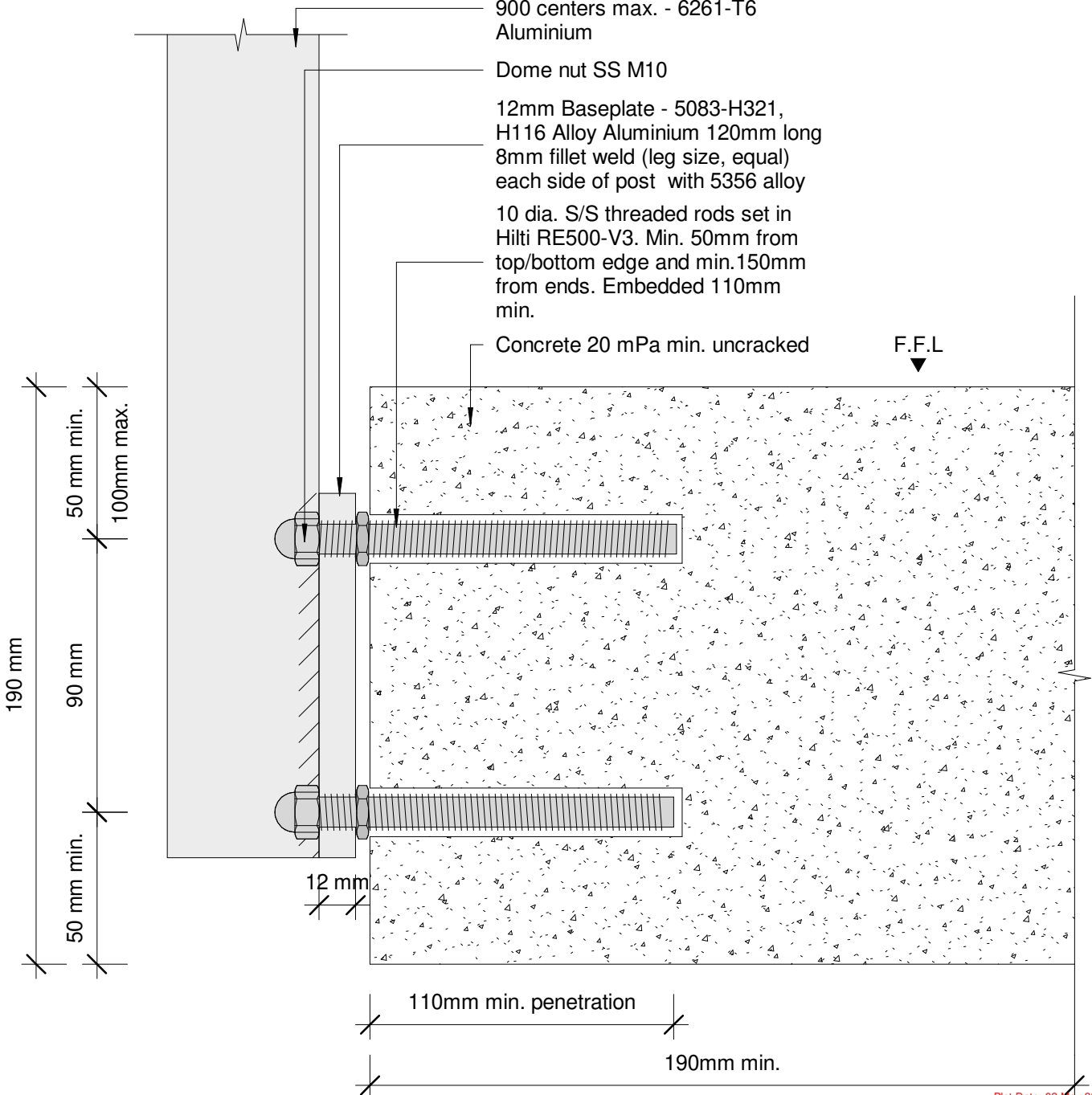
Dome nut SS M10

12mm Baseplate - 5083-H321,
H116 Alloy Aluminium 120mm long
8mm fillet weld (leg size, equal)
each side of post with 5356 alloy

10 dia. S/S threaded rods set in
Hilti RE500-V3. Min. 50mm from
top/bottom edge and min. 150mm
from ends. Embedded 110mm
min.

Concrete 20 mPa min. uncracked

F.F.L



Plot Date: 02 May 2019 11:37

© 2019. The copyright of this document is the property of Glass Vice Limited and shall not be reproduced, copied, loaned or disposed of directly, or indirectly, nor used for any purpose other than that for which it is specifically furnished without prior consent.

All dimensions in millimetres

GLASS
VICE

Vertical Battens

1500mm High Face Fixed into Concrete

Detail - Face Fix Concrete 1.5M Residential Barrier

Date: 10 April 2019

Scale: As indicated

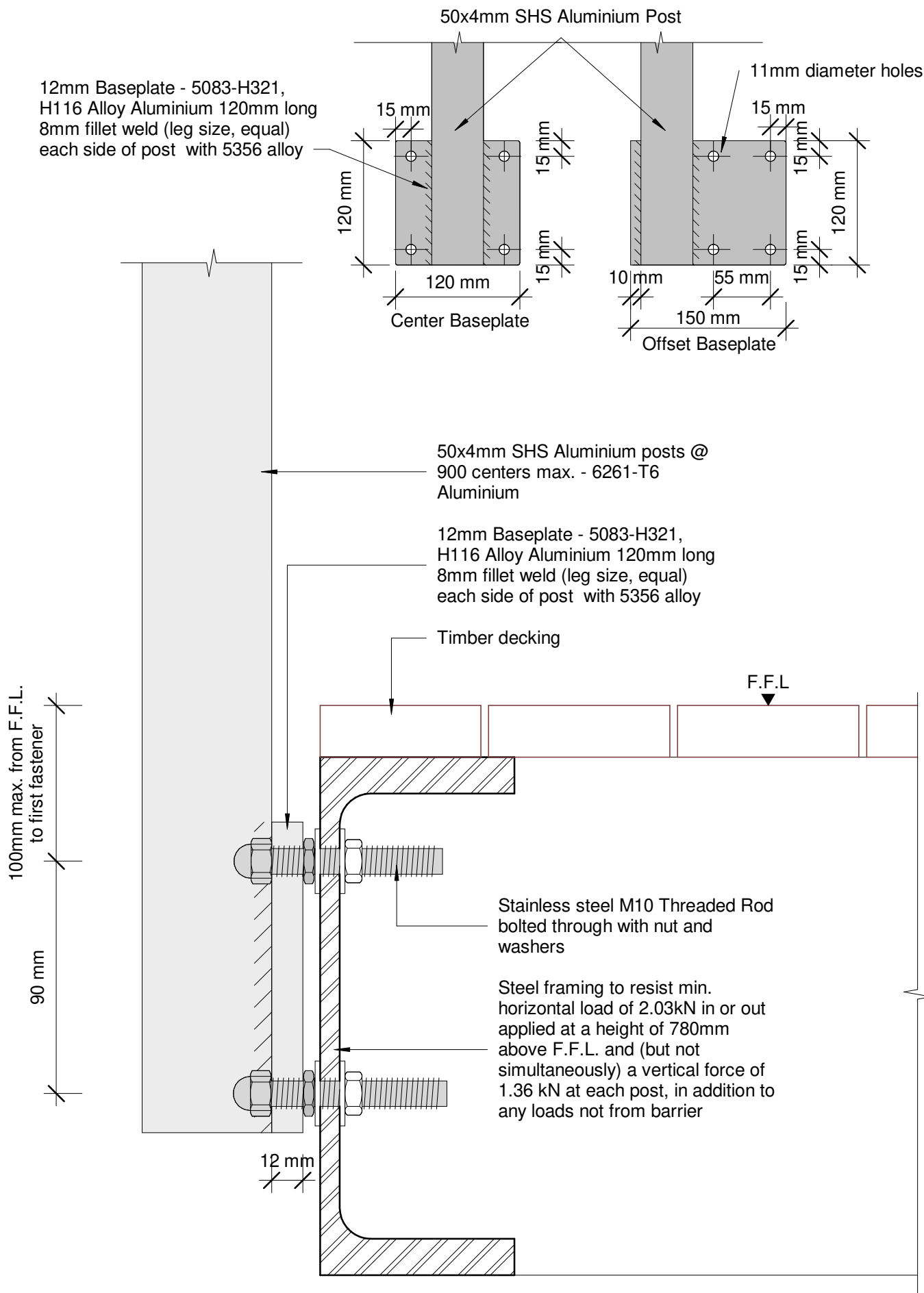
Issue 01

www.glassvice.com

Phone +64 9 414 6565

info@glassvice.com

VB1500_FFC_140



Plot Date: 02 May 2019 11:37

© 2019. The copyright of this document is the property of Glass Vice Limited and shall not be reproduced, copied, loaned or disposed of directly, or indirectly, nor used for any purpose other than that for which it is specifically furnished without prior consent.

All dimensions in millimetres

GLASS
VICE

Vertical Battens

1500mm High Face Fixed into Steel Beam

Detail - Face Fix Steel Beam 1.5M Residential Barrier

Date: 10 April 2019
Scale: As indicated
Issue 01

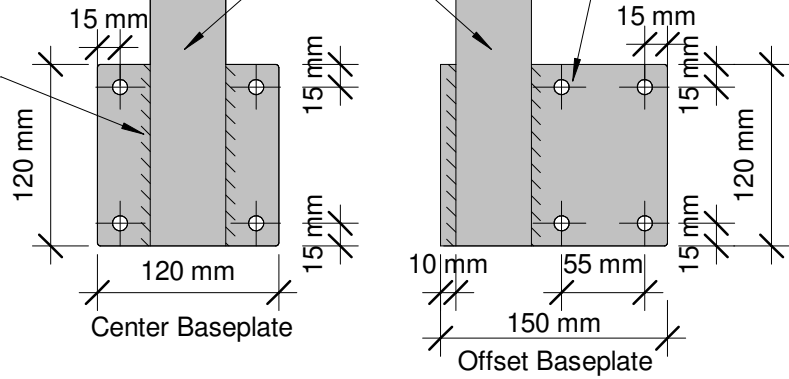
www.glassvice.com
Phone +64 9 414 6565
info@glassvice.com

VB1500_FFS_115

12mm Baseplate - 5083-H321,
H116 Alloy Aluminium 120mm long
8mm fillet weld (leg size, equal)
each side of post with 5356 alloy

50x4mm SHS Aluminium Post

11mm diameter holes



50x4mm SHS Aluminium posts @
900 centers max. - 6261-T6
Aluminium

Dome nut SS M10

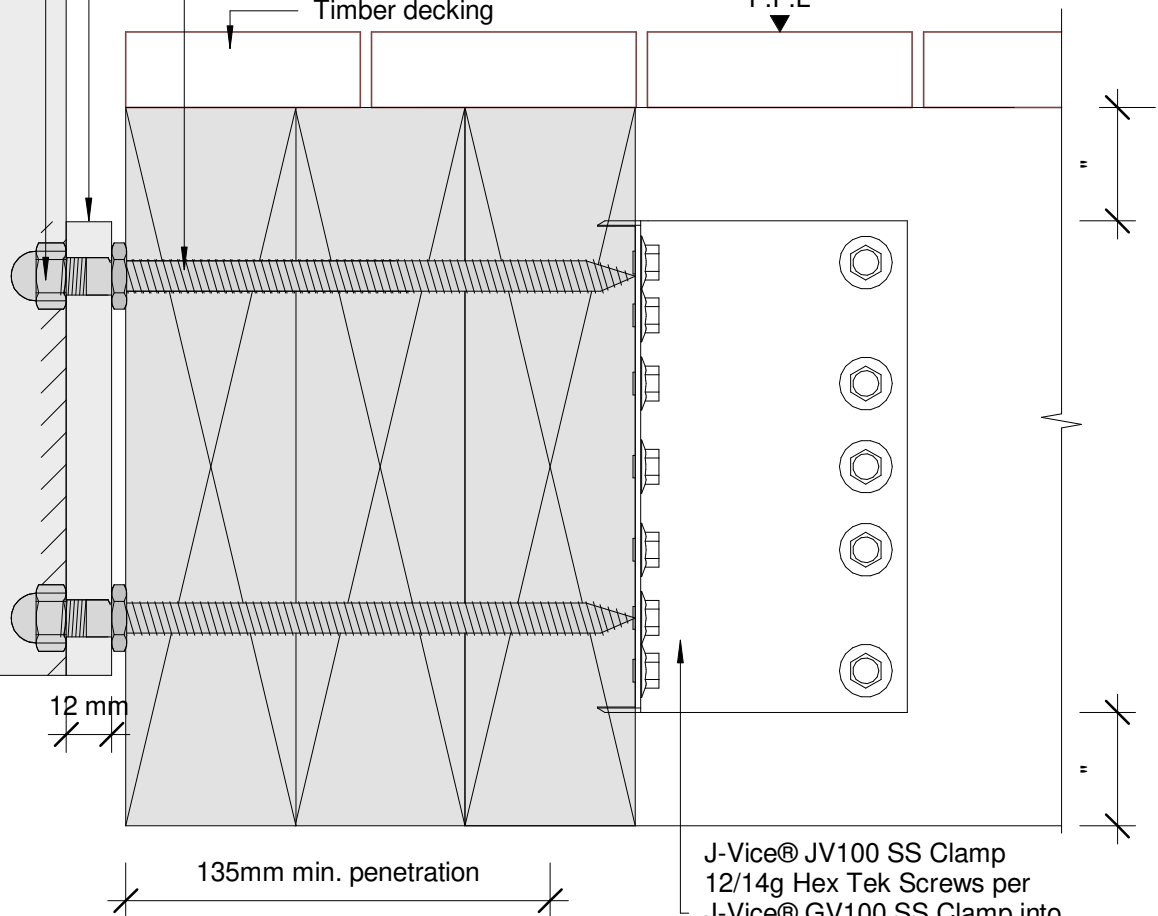
12mm Baseplate - 5083-H321,
H116 Alloy Aluminium 120mm long
8mm fillet weld (leg size, equal)
each side of post with 5356 alloy

M10 S/S 175mm lag screw must
penetrate 135mm (exc. tapered
point) 50mm from any timber
member end

100mm max. from F.F.L.
to first fastener
25mm min.

Timber decking

F.F.L.



J-Vice® JV100 SS Clamp
12/14g Hex Tek Screws per
J-Vice® GV100 SS Clamp into
190x45mm joists - 316 SS 2mm
thick

Plot Date: 02 May 2019 11:37

© 2019. The copyright of this document is the property of Glass Vice Limited and shall not be reproduced, copied, loaned or disposed of directly, or indirectly, nor used for any purpose other than that for which it is specifically furnished without prior consent.

All dimensions in millimetres

GLASS
VICE®

Vertical Battens

1500mm High Face Fixed into Timber

Detail - Face Fix 190 Triple Joist 1.5M Residential Barrier

Date: 10 April 2019

Scale: As indicated

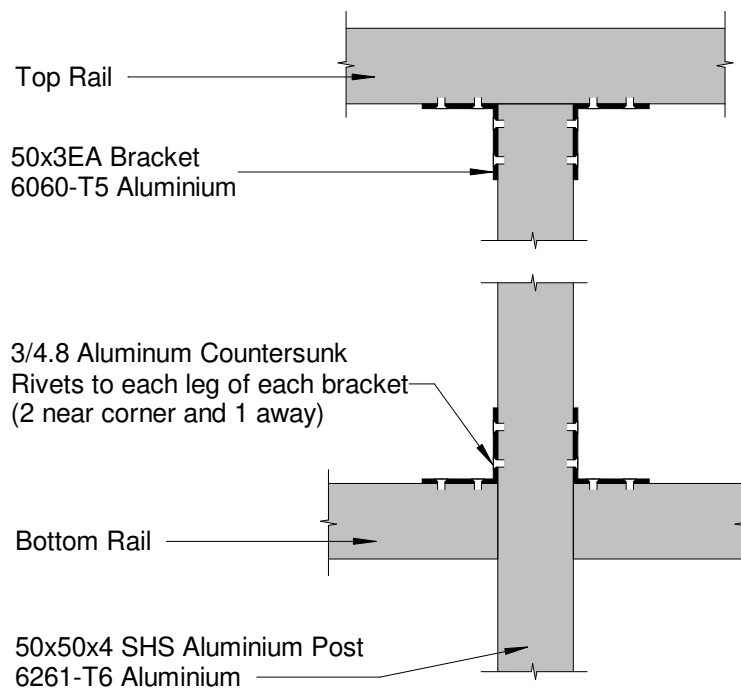
Issue 01

www.glassvice.com

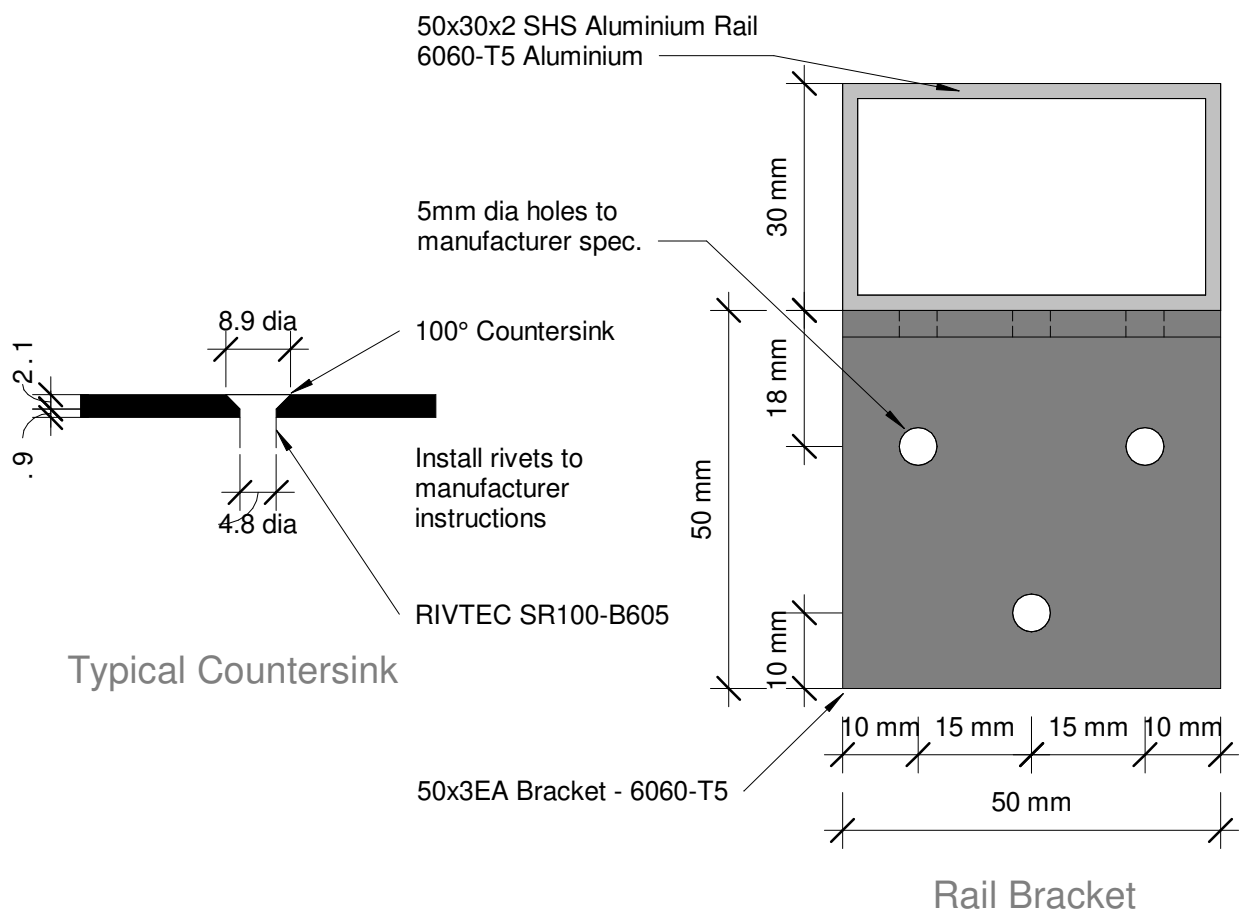
Phone +64 9 414 6565

info@glassvice.com

VB1500_FFT_181



Rail - Post Connection



Plot Date: 02 May 2019 11:37

© 2019. The copyright of this document is the property of Glass Vice Limited and shall not be reproduced, copied, loaned or disposed of directly, or indirectly, nor used for any purpose other than that for which it is specifically furnished without prior consent.

All dimensions in millimetres



Vertical Battens
Top/Side Fix 1500mm
Detail - Rail - Post Connection

Date: 10 April 2019
Scale: As indicated
Issue 01

www.glassvice.com
Phone +64 9 414 6565
info@glassvice.com

VB1500_RPC_110

