

METALCRAFT GUTTERS

PURPOSE

Metalcraft Roofing supplies Metalcraft Gutters for use as guttering and spouting as part of a roof water drainage system.

EXPLANATION

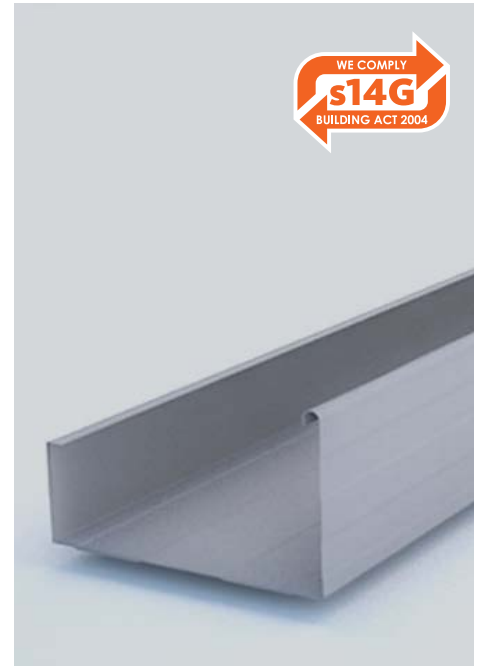
Metalcraft Gutters are fabricated from pre-coated steel supplied by NZ Steel. The protective coatings are designed to withstand NZ's exposure zones. Design and installation information is supplied by Metalcraft Roofing.

Metalcraft Gutters are available in the following gutter profiles (nominal sizes). The cross-sectional areas for each profile are shown in brackets:

- 115 mm box gutter (6000 mm²)
- 125 mm box gutter (8435 mm²)
- 175 mm box gutter (19250 mm²)
- 300 mm box gutter (27000 mm²)
- Quadline gutter (5550 mm²)
- Squareline gutter (6090 mm²)
- Colonial Quad gutter (5550 mm²)
- Half Round gutter (5650 mm²)
- Quarter Round gutter (4880 mm²).

They are manufactured from the following NZ Steel branded products:

- Zinalume®
- Colorsteel® Endura®
- Colorsteel® Maxx®.



SCOPE AND LIMITATIONS OF USE

Scope	Limitations
Location	
In any wind zone or calculated design load.	➤ Purlin fixings must be in accordance with NZS 3604:2011, Table 10.10 and 10.11.
In all exposure zones defined in NZS 3604:2011.	➤ In exposure Zone D only Colorsteel® Endura® or Colorsteel® Maxx® may be used. ➤ For use in microclimatic considerations (as defined in paragraph 4.2.4) refer to Metalcraft Roofing for technical advice.
On buildings any proximity to a relevant boundary. In alpine zones.	➤ Eaves within 650mm of the relevant boundary must be fully fire rated. ➤ In areas where there is snow loading, gutters must be fitted with snow straps at a maximum of 600mm centres. ➤ In alpine areas, internal gutters must, have snowguards to allow snow melt to drain away.
Building	
In conjunction with a primary structure and roof cladding system that complies with the NZ Building Code or where the designer has established that the existing structure is suitable for the intended building work.	
In conjunction with downpipes sized in accordance with E1/AS1 (paragraph 4.0) or E2/AS1 (Table 5).	

NZ STEEL ASSURANCE

As the manufacturer of the steel, from which Metalcraft Gutters are fabricated, NZ Steel provides assurance that the steel:

- has been manufactured in accordance with AS 1397:2001
- is coated in accordance with AS/NZS 2728:2013 or galvanised in accordance with AS/NZS 2312.2:2014.

NZ Steel has established an Environmental Management System certified to ISO 14001.

For more information on the specific exposure zones and environmental impacts of the product refer to www.colorsteel.co.nz.



PERFORMANCE CLAIMS

If designed, installed and maintained in accordance with all Metalcraft Roofing requirements, the Metalcraft Gutters will comply with or contribute to compliance with the following performance claims:

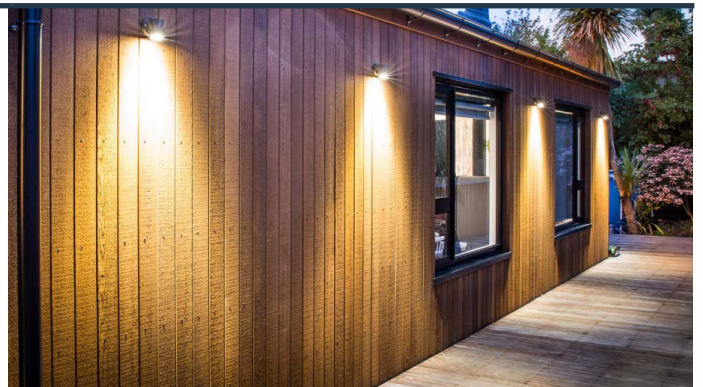
NZ Building Code clauses	BASIS OF COMPLIANCE ¹	
	Compliance statement	Demonstrated by
B1 Structure B1.3.1, B1.3.2 B1.3.3 (a, b, c, j)	ACCEPTABLE SOLUTION B1/AS1	› Manufactured in accordance with AS/NZS 1397:2011.
B2 Durability B2.3.1 (a)	ACCEPTABLE SOLUTION B2/AS1	› Coated in accordance with AS/NZS 2728:2013 (cited in E2/AS1).
C3 Fire Affecting Areas Beyond the Fire Source C3.4 (a) C3.7 (a)	ACCEPTABLE SOLUTION C/AS1 C/AS2 1 st edition June 2019	› Steel is non-combustible (refer paragraph 5.8 C/AS2 1st edition June 2019). › Tested to ISO 5660 BRANZ (FH 6102-TT, dated 3/1/2017) (Material Group I-S). › BRANZ is accredited to perform ISO5660 test.
E1 Surface Water E1.3.3 (a)	ACCEPTABLE SOLUTION E1/AS1	› Materials, size and configuration in accordance with E1/AS1 section 5. › NZ Metal Roof Manufacturer's (NZMRM): Code of Practice (v3.0).
E2 External Moisture E2.3.1 E2.3.2 E2.3.7 (a, b, c)	ACCEPTABLE SOLUTIONS E2/AS1	› Materials, size and configuration as specified in para 4.1, and E2/AS1, Fig 15, Cross sectional area of external gutter. › NZ Metal Roof Manufacturer's (NZMRM): Code of Practice (v3.0).
F2 Hazardous Building Materials F2.3.1	ALTERNATIVE SOLUTION	› Coating systems are inert once dry. › Colorsteel® safety data sheets.

1. The Compliance Statement is the pass holder's statement that they have met their obligations under s14G(2) of the Building Act 2004.

Other Performance Statements	BASIS OF STATEMENT	
	Performance statement	Demonstrated by
Metalcraft Gutters will not contaminate potable water.	AS/NZS 4020:2005	› Claimed by NZ Steel. › BRANZ statement refer: http://www.level.org.nz/water/water-supply/mains-or-rainwater/harvesting-rainwater/ .

SOURCES OF INFORMATION

- › AS/NZS 3604:2011. *Timber framed buildings*.
- › AS/NZS 1397:2001. *Steel sheet and strip - Hot-dip zinc coated or aluminium/zinc coated*.
- › BRANZ <http://www.level.org.nz/water/water-supply/mains-or-rainwater/harvesting-rainwater/>
- › NZ Metal Roof Manufacturer's (NZMRM): *Code of Practice (v3.0)*.
- › NZ Steel Technical Bulletin (August 2016). *Fire Testing of Coated Steel Product*. NZ Steel Fire Bulletin (August 2016)



VERSION: **DATE:**

Note: Uncontrolled in printed format.

NAME: Frances Charles

POSITION: National Sales & Marketing Mgr

Signed on behalf of Metalcraft Roofing:

By signing this pass™ the signatory confirms that, in respect of the subject of this pass™, the company has met their s14G obligations under the Building Act 2004.



For more information visit www.metalcraftgroup.co.nz.