

EXPOL THERMASLAB EDGE (XPS) – TECHNICAL DATA SHEET

1.0 - Product Overview

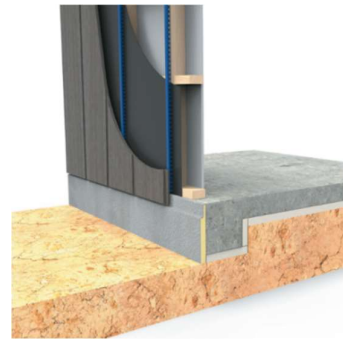
EXPOL ThermaSlab Edge (Extruded Polystyrene / XPS) is rigid and provides optimal insulation for high and low temperatures.

Ideally suited for residential and commercial applications, **EXPOL ThermaSlab Edge** is a cost effective, easy to install insulation solution that achieves R-values that meet building regulations.

EXPOL ThermaSlab Edge displays excellent strength and water resistance when used as slab insulation. A thin, lightweight insulation board, **EXPOL ThermaSlab Edge** is easy to handle and quick to install. It is preferred by specifiers because of its durability and superior thermal insulation properties, that will last the life of the building.

EXPOL ThermaSlab Edge is available in various heights and can be used in all types of concrete slabs, as a retro fit solution.

EXPOL ThermaSlab Edge is available both uncoated and coated with a water-based, water-proof resin.



2.0 - Installation

2.1 There are no special requirements for PPE when handling or installing XPS. It is an inert, non-toxic material.

2.2 When transporting, storing or installing, ensure the XPS is not exposed to:

- Petroleum based solvents, or
- Fire, or
- Sustained direct sunlight.

For any further technical information please contact us.

P: +64 9 634 3449 **F:** +64 9 634 0756 **T:** 0800 86 33 73 **E:** tech@expol.co.nz **W:** www.expol.co.nz

EXPOL THERMASLAB EDGE (XPS) – TECHNICAL DATA SHEET

- 2.3 PVC sheathed electrical cables should not be allowed direct contact with XPS.
 - 2.4 XPS is compatible with all common construction products.
 - 2.5 For detailed installation instructions please visit www.expol.co.nz
-

3.0 - Maintenance

- 3.1 No maintenance required
-

4.0 - Warranty

We believe we manufacture and supply the highest quality UnderFloor, EPS and XPS Foam Insulation products and that is why we stand behind them with some of the best warranties in the industry.

- 4.1 We provide a 15-year warranty on our XPS Foam Insulation Products – for full warranty details visit www.expol.co.nz/expol-xps-warranty/
-

5.0 - Compliance with the New Zealand Building Code

XPS, when installed and maintained in accordance with the requirements outlined in this technical data sheet, will meet or contribute to meeting the following provisions of the New Zealand Building Code:

- 5.1 Clause B2 Durability, performance B2.3.1 (a), B2.3.1(b)
- 5.2 Clause E3 Internal moisture performance E3.3.1
- 5.3 Clause F2 Hazardous building materials performance F2.3.1(a)

EXPOL XPS is not subject to a warning or ban under the Building Act 2004.

6.0 - Quality Assurance

- 6.1 BRANZ, H1 Energy efficiency performance H1.3.1(a), H1.3.2(e)

For any further technical information please contact us.

P: [+64 9 634 3449](tel:+6496343449) F: [+64 9 634 0756](tel:+6496340756) T: [0800 86 33 73](tel:0800863373) E: tech@expol.co.nz W: www.expol.co.nz

EXPOL THERMASLAB EDGE (XPS) – TECHNICAL DATA SHEET

7.0 - Technical Data

| Properties | Test / Method / Standard | Test Results |
|-----------------------------|---|--------------|
| Material | Uncoated - Extruded Polystyrene. Coated - Extruded Polystyrene with a water-based, waterproof resin coating. | |
| Density | 30 kg / m ³ | |
| Sheet Size | 2500 mm x 300 mm 2500 mm x 400 mm | |
| Thickness / Product R Value | 30mm | R 1.0 |

For any further technical information please contact us.

P: [+64 9 634 3449](tel:+6496343449) F: [+64 9 634 0756](tel:+6496340756) T: [0800 86 33 73](tel:0800863373) E: tech@expol.co.nz W: www.expol.co.nz