

AWP WALL VERTICAL - DRAWING LIST

KS1000 AWP Vertical Std Q3 2015			
DATE	TITLE	DRG_REF	REVISION
22.12.15	AWP WALL VERTICAL - DRAWING LIST	AWP_VS_00	-
22.12.15	KS1000 AWP WALL PROFILE: MICRO-RIB & MINI-MICRO	AWP_VS_01	-
22.12.15	KS1000 AWP WALL PROFILE: EUROBOX & WAVE	AWP_VS_02	-
22.12.15	KS1000 AWP WALL PROFILE: PLANK	AWP_VS_03	-
22.12.15	WALL VERTICAL FIXINGS	AWP_VS_04	-
22.12.15	WALL VERTICAL SHEETING RAILS	AWP_VS_05	-
22.12.15	WALL VERTICAL - AWP BASE DETAIL	AWP_VS_06	-
22.12.15	WALL VERTICAL - EXTERNAL CORNER	AWP_VS_07	-
22.12.15	WALL VERTICAL - INTERNAL CORNER	AWP_VS_08	-
22.12.15	WALL VERTICAL ABUTMENT TO CONCRETE	AWP_VS_09	-
22.12.15	WALL VERTICAL - ABUTMENT TO CONCRETE	AWP_VS_10	-
22.12.15	WALL VERTICAL - EAVES GUTTER	AWP_VS_11	-
22.12.15	WALL VERTICAL - OVERHANGING EAVES GUTTER	AWP_VS_12	-
30.08.16	WALL VERTICAL - BOUNDARY GUTTER	AWP_VS_13	1
30.08.16	WALL VERTICAL - VERGE_1	AWP_VS_14	1
30.08.16	WALL VERTICAL - VERGE_2	AWP_VS_15	1
22.12.15	WALL VERTICAL - SKILLION DETAIL	AWP_VS_16	-
30.08.16	WALL VERTICAL TO HORIZONTAL STACK JOINT DETAIL	AWP_VS_17	1
30.08.16	WALL VERTICAL STACK JOINT DETAIL. VERTICAL DEFLECTION HEAD	AWP_VS_17A	1
30.08.16	WALL VERTICAL TO VERTICAL STACK JOINT DETAIL	AWP_VS_17b	1
29.11.16	WALL VERTICAL TO VERTICAL DEFLECTION STACK JOINT DETAIL	AWP_VS_17c	1
22.12.15	KS1000 AWP WALL VERTICAL - WINDOW DETAIL	AWP_VS_20	-
22.12.15	KS1000 AWP WALL VERTICAL - OVER HEAD DOOR DETAIL	AWP_VS_21	-
22.12.15	WALL VERTICAL LOUVRE DETAIL (VERT SECTION)	AWP_VS_22	-
22.12.15	WALL VERTICAL LOUVRE DETAIL (HORIZ. SECTIONS)	AWP_VS_23	-
22.12.15	WALL VERTICAL - PENETRATION DETAIL	AWP_VS_24	-

SYSTEM KS1000 AWP WALL VERTICAL_STD Q3 2015			
DESCRIPTION AWP WALL VERTICAL - DRAWING LIST			
APPROVED BY JS	DATE 22.12.15	REVISION -	
DRG REF: AWP_VS_00	SCALE 1	SHEET 1 of 1	PAPER SIZE A4

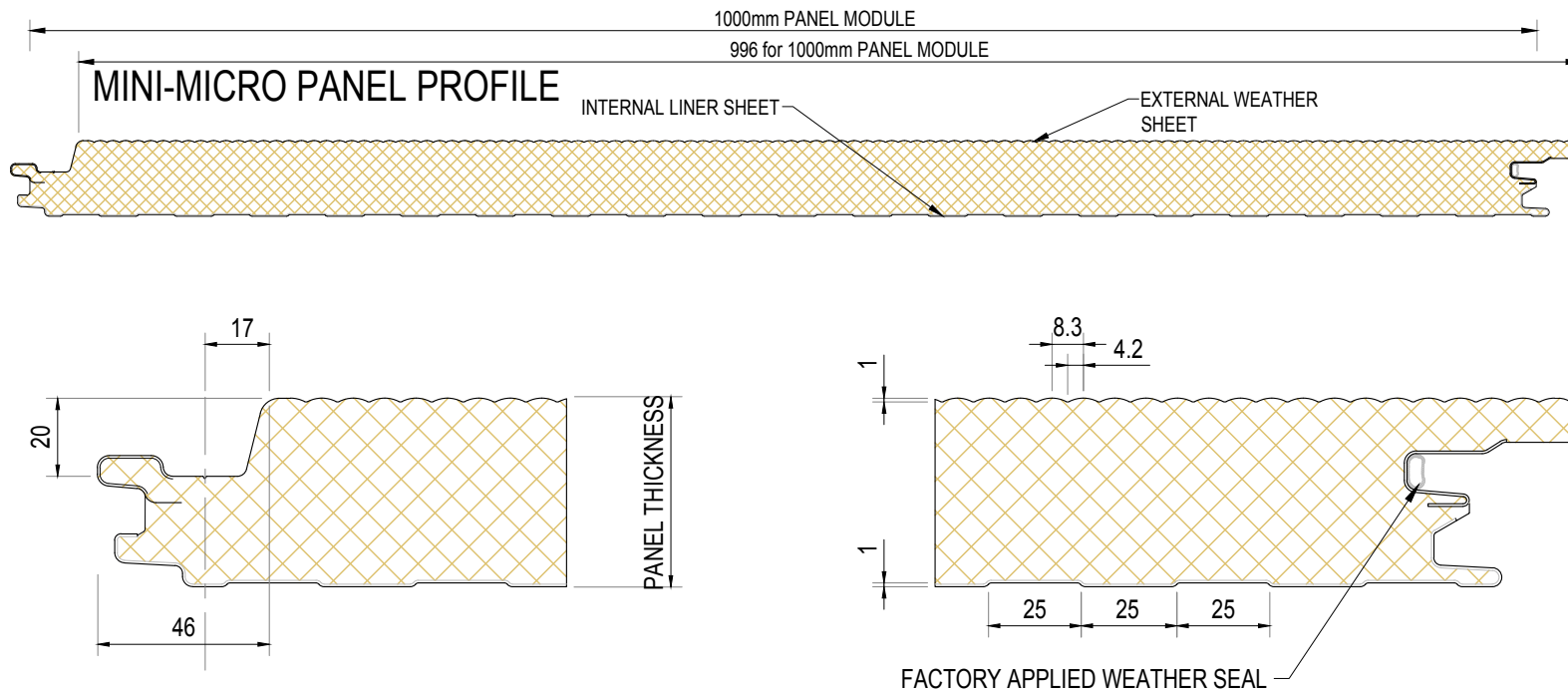
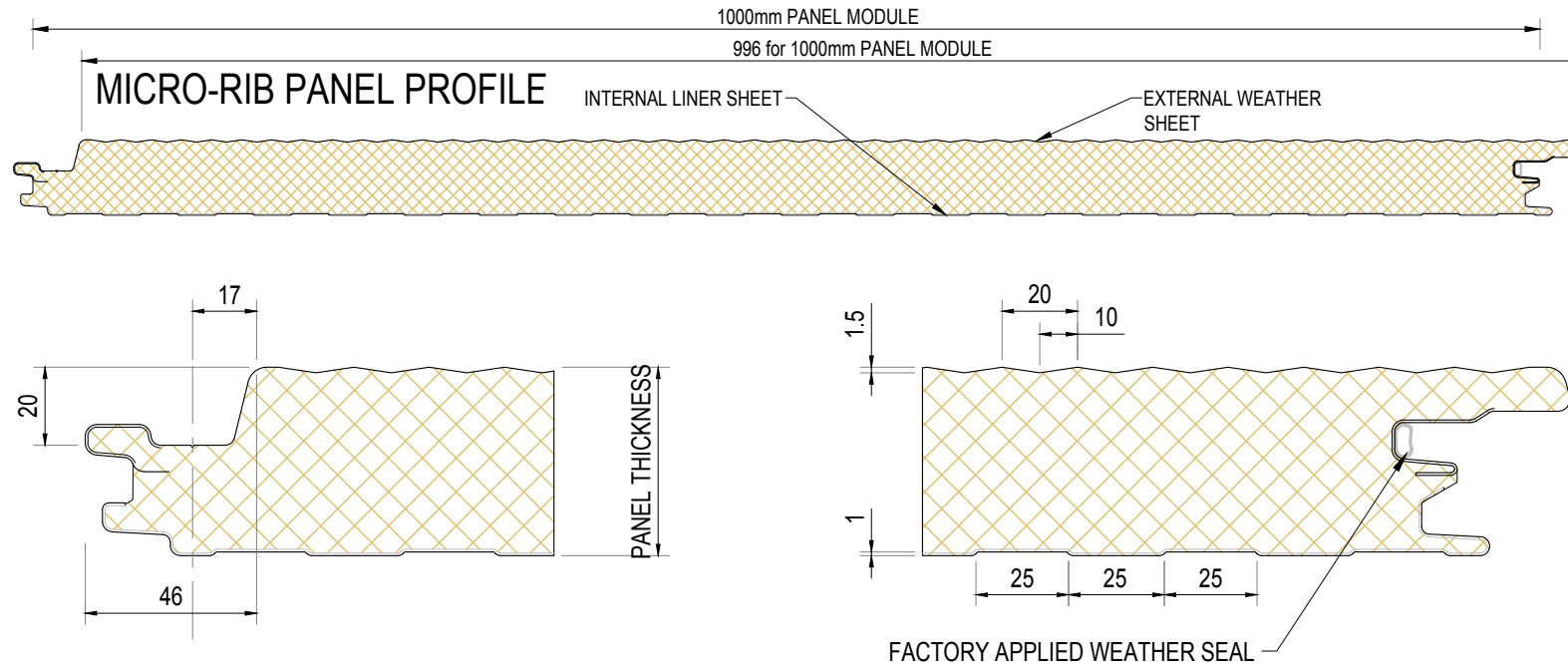
This document remains the property of Kingspan Ltd under copyright laws. Licence is granted to use this document and its contents in connection with Kingspan Ltd products only.
©Kingspan Ltd

DO NOT SCALE. IF IN DOUBT ASK

New Zealand: Kingspan Ltd
97 Montreal St
Christchurch
Tel: +64 (3) 260 5530
Fax: +64 (3) 260 5539
Freephone: 0800 121280
email: info@kingspanpanels.co.nz
www.kingspanpanels.co.nz


Kingspan.
Insulated Panels

KS1000 AWP WALL PROFILE: MICRO-RIB & MINI-MICRO



AVAILABLE PANEL THICKNESSES	NOTE: ABOVE DIMENSIONS ARE NOMINAL. ACTUAL DIMENSIONS WILL VARY DUE TO MANUFACTURING TOLERANCES. PRECISE DIMENSIONS MUST ALWAYS BE MEASURED FROM ACTUAL SAMPLES ALL DIMENSIONS IN MILLIMETRES.
INSULATION CORE	
50	
80	
100	
140	

SYSTEM KS1000 AWP WALL VERTICAL_STD Q3 2015			
DESCRIPTION KS1000 AWP WALL PROFILE: MICRO-RIB & MINI-MICRO			
APPROVED BY JS	DATE 22.12.15	REVISION -	
DRG REF: AWP_VS_01	SCALE 1:5	SHEET 1 of 1	PAPER SIZE A4

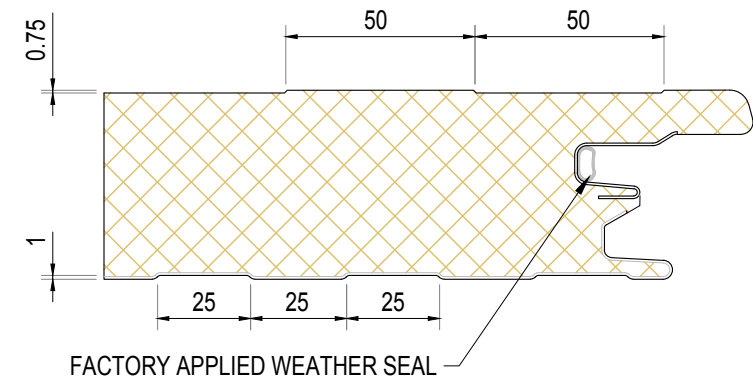
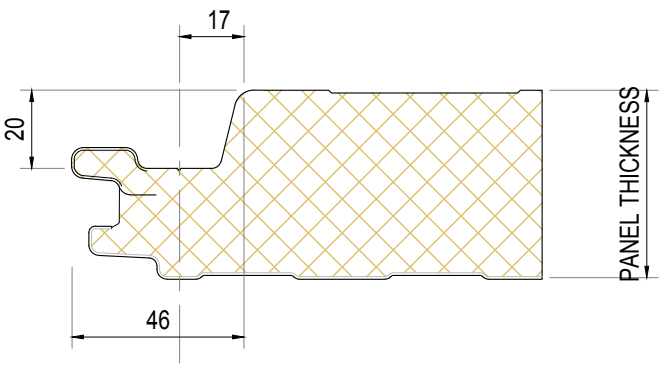
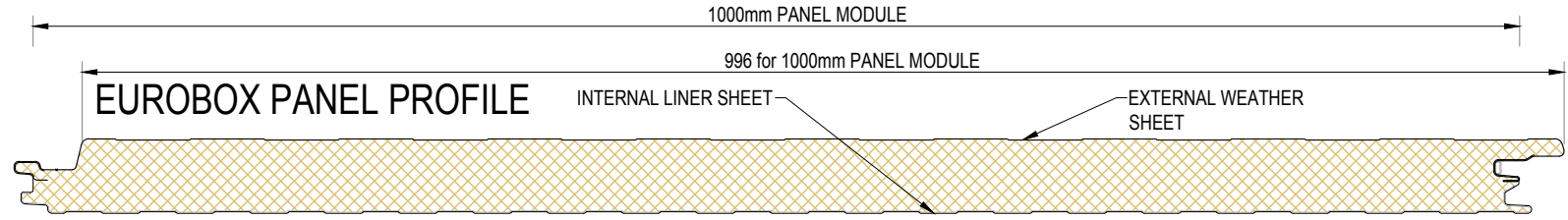
This document remains the property of Kingspan Ltd under copyright laws. Licence is granted to use this document and its contents in connection with Kingspan Ltd products only.
©Kingspan Ltd

DO NOT SCALE. IF IN DOUBT ASK

New Zealand: Kingspan Ltd
97 Montreal St
Christchurch
Tel: +64 (3) 260 5530
Fax: +64 (3) 260 5539
Freephone: 0800 121280
email: info@kingspanpanels.co.nz
www.kingspanpanels.co.nz

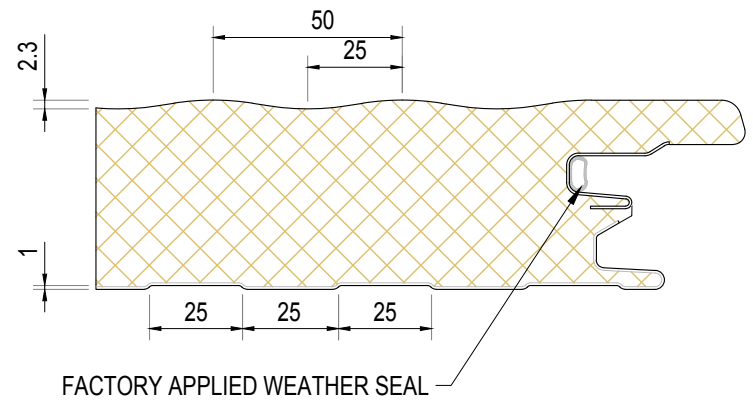
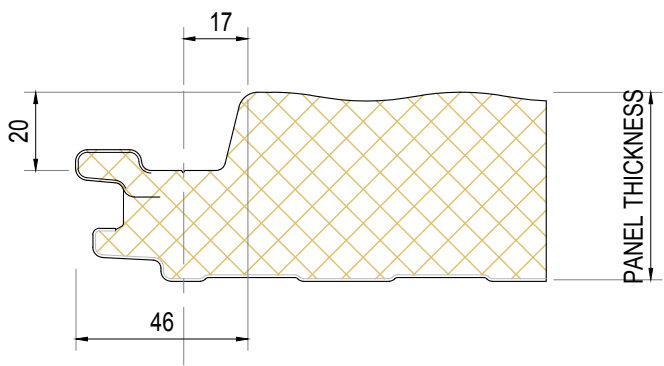
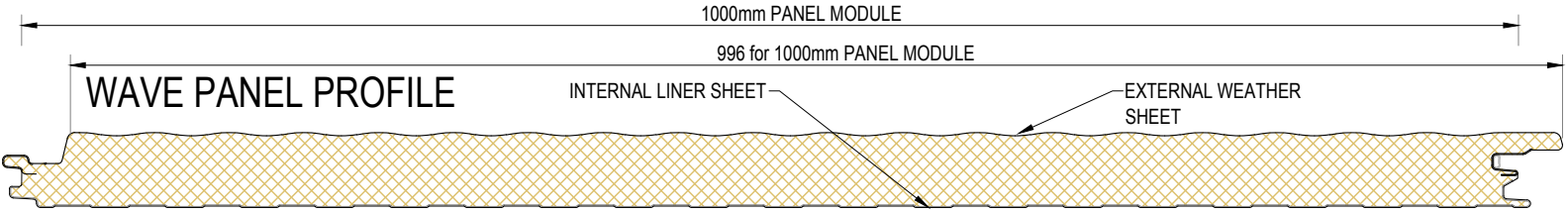
KS1000 AWP WALL PROFILE: EUROBOX & WAVE

G:\Technical\current\Drawings\current 2015\01\AWP Wall Vertical\KS1000 AWP Wall Vertical_Std Q3 2015.dwg, AWP_VS_02, 8/12/2015, 4:00:51 a.m.



AVAILABLE PANEL THICKNESSES	
INSULATION CORE	
	50
	80
	100
	140

NOTE: ABOVE DIMENSIONS ARE NOMINAL, ACTUAL DIMENSIONS WILL VARY DUE TO MANUFACTURING TOLERANCES. PRECISE DIMENSIONS MUST ALWAYS BE MEASURED FROM ACTUAL SAMPLES ALL DIMENSIONS IN MILLIMETRES.



SYSTEM			
KS1000 AWP WALL VERTICAL_STD Q3 2015			
DESCRIPTION			
KS1000 AWP WALL PROFILE: EUROBOX & WAVE			
APPROVED BY	DATE	REVISION	
JS	22.12.15	-	
DRG REF:	SCALE	SHEET	PAPER SIZE
AWP_VS_02	1:5	1 of 1	A4

This document remains the property of Kingspan Ltd under copyright laws. Licence is granted to use this document and its contents in connection with Kingspan Ltd products only.
©Kingspan Ltd

DO NOT SCALE. IF IN DOUBT ASK

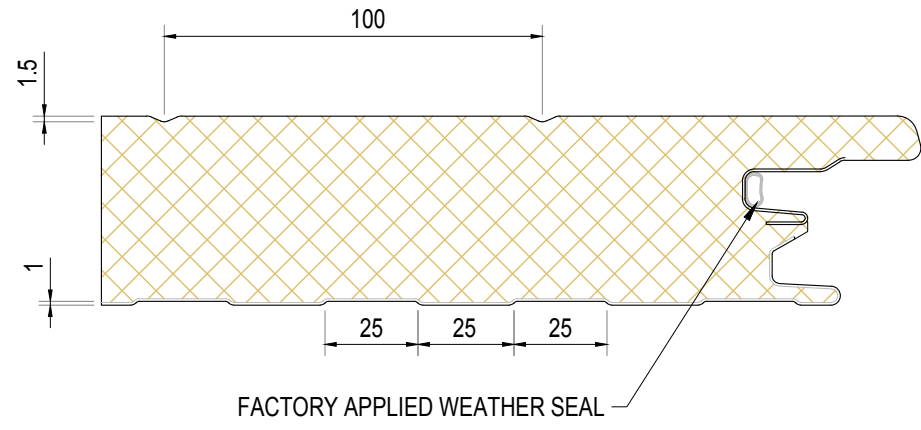
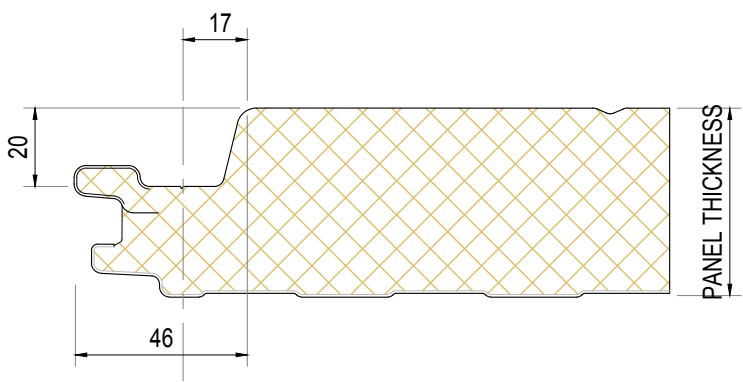
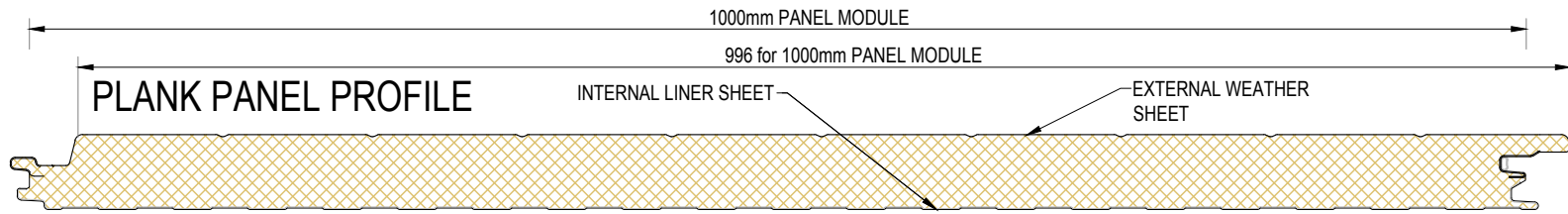
New Zealand: Kingspan Ltd
97 Montreal St
Christchurch
Tel: +64 (3) 260 5530
Fax: +64 (3) 260 5539
Freephone: 0800 121280
email: info@kingspanpanels.co.nz
www.kingspanpanels.co.nz

KS1000 AWP WALL PROFILE: PLANK

G:\Technical\current\Drawings\current 2015\01\AWP Wall Vertical\KS1000 AWP Wall Vertical_Std_Q3 2015.dwg_AWP_VS_03_8122016_10:29:52 a.m.

AVAILABLE PANEL THICKNESSES
50
80
100
140

NOTE: ABOVE DIMENSIONS ARE NOMINAL, ACTUAL DIMENSIONS WILL VARY DUE TO MANUFACTURING TOLERANCES. PRECISE DIMENSIONS MUST ALWAYS BE MEASURED FROM ACTUAL SAMPLES ALL DIMENSIONS IN MILLIMETRES.



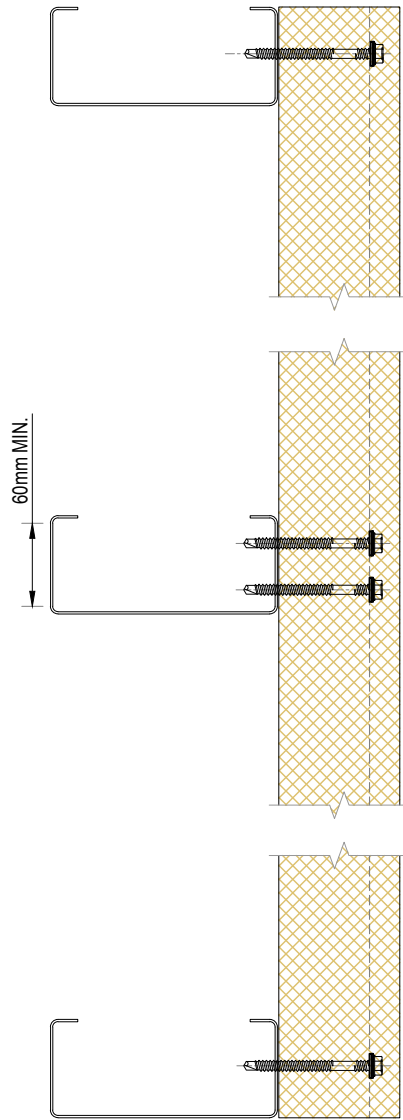
SYSTEM KS1000 AWP WALL VERTICAL_STD Q3 2015			
DESCRIPTION KS1000 AWP WALL PROFILE: PLANK			
APPROVED BY JS	DATE 22.12.15	REVISION -	
DRG REF: AWP_VS_03	SCALE 1:5	SHEET 1 of 1	PAPER SIZE A4

This document remains the property of Kingspan Ltd under copyright laws. Licence is granted to use this document and its contents in connection with Kingspan Ltd products only.
©Kingspan Ltd

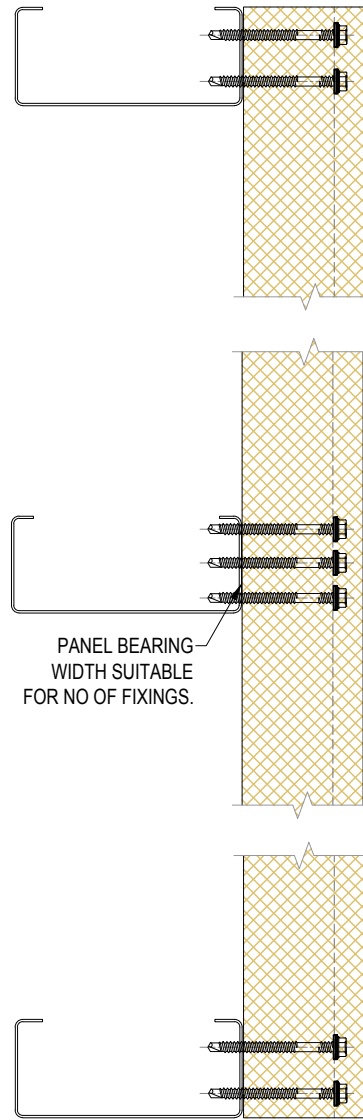
DO NOT SCALE. IF IN DOUBT ASK

New Zealand: Kingspan Ltd
97 Montreal St
Christchurch
Tel: +64 (3) 260 5530
Fax: +64 (3) 260 5539
Freephone: 0800 121280
email: info@kingspanpanels.co.nz
www.kingspanpanels.co.nz

WALL VERTICAL FIXINGS

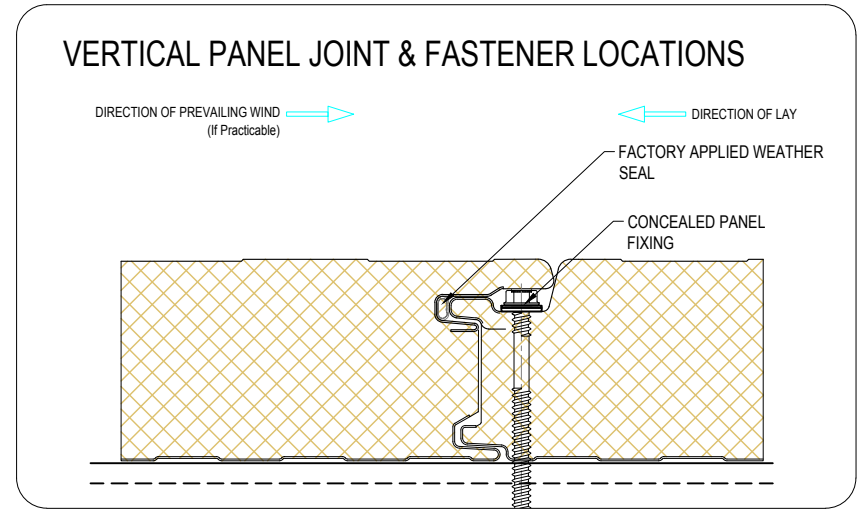


RECOMMENDED FASTENER LOCATIONS:
PATTERN A (STANDARD PRESSURE ZONE)



PATTERN B (HIGH PRESSURE ZONE)

NOTE: THE NUMBER OF FASTENERS
AND LOCATIONS DEPEND ON THE
ACTUAL DESIGN SUCTION LOAD



SYSTEM KS1000 AWP WALL VERTICAL_STD Q3 2015			
DESCRIPTION WALL VERTICAL FIXINGS			
APPROVED BY JS	DATE 22.12.15	REVISION -	
DRG REF: AWP_VS_04	SCALE 1:5	SHEET 1 of 1	PAPER SIZE A4

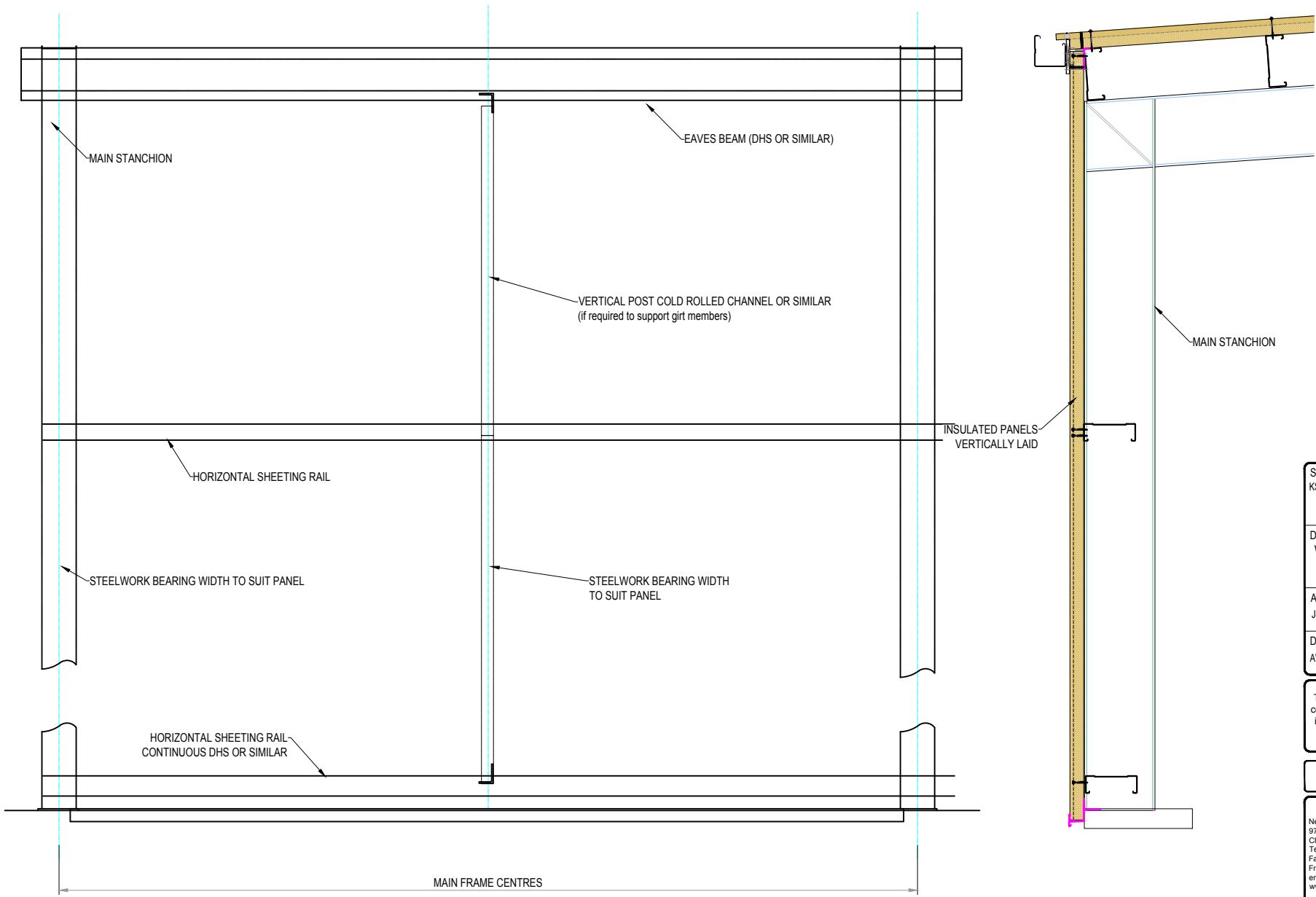
This document remains the property of Kingspan Ltd under copyright laws. Licence is granted to use this document and its contents in connection with Kingspan Ltd products only.
©Kingspan Ltd

DO NOT SCALE. IF IN DOUBT ASK

New Zealand: Kingspan Ltd
97 Montreal St
Christchurch
Tel: +64 (3) 260 5530
Fax: +64 (3) 260 5539
Freephone: 0800 121280
email: info@kingspanpanels.co.nz
www.kingspanpanels.co.nz

WALL VERTICAL SHEETING RAILS

G:\Technical\current\Drawings\current\2015\Q1\AWP Wall Vertical\KS1000 AWP Wall Vertical_Std Q3 2015.dwg, AWP_VS_05_8/12/2015 10:29:53 a.m.



SYSTEM KS1000 AWP WALL VERTICAL_STD Q3 2015			
DESCRIPTION WALL VERTICAL SHEETING RAILS			
APPROVED BY JS	DATE 22.12.15	REVISION -	
DRG REF: AWP_VS_05	SCALE NTS	SHEET 1 of 1	PAPER SIZE A4

This document remains the property of Kingspan Ltd under copyright laws. Licence is granted to use this document and its contents in connection with Kingspan Ltd products only.
©Kingspan Ltd

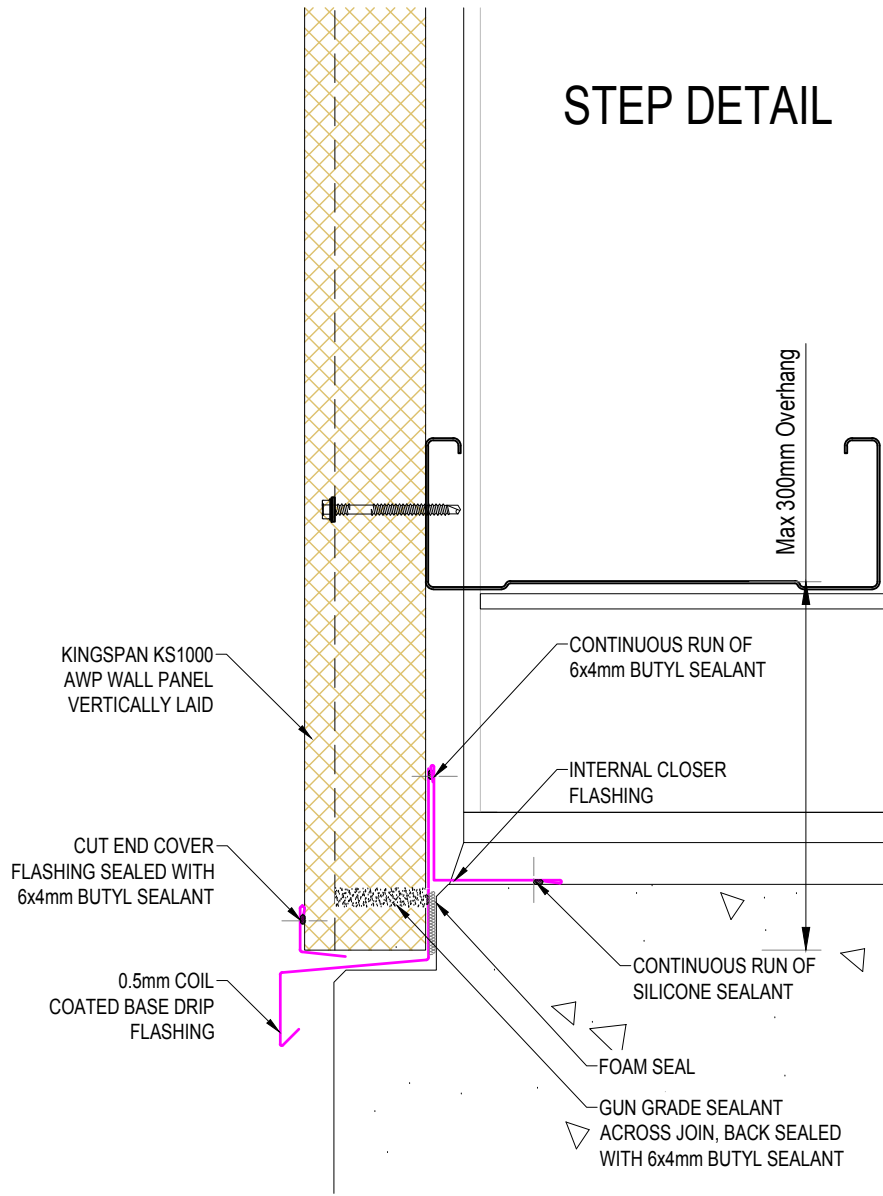
DO NOT SCALE. IF IN DOUBT ASK

New Zealand: Kingspan Ltd
97 Montreal St
Christchurch
Tel: +64 (3) 260 5530
Fax: +64 (3) 260 5539
Freephone: 0800 121280
email: info@kingspanpanels.co.nz
www.kingspanpanels.co.nz

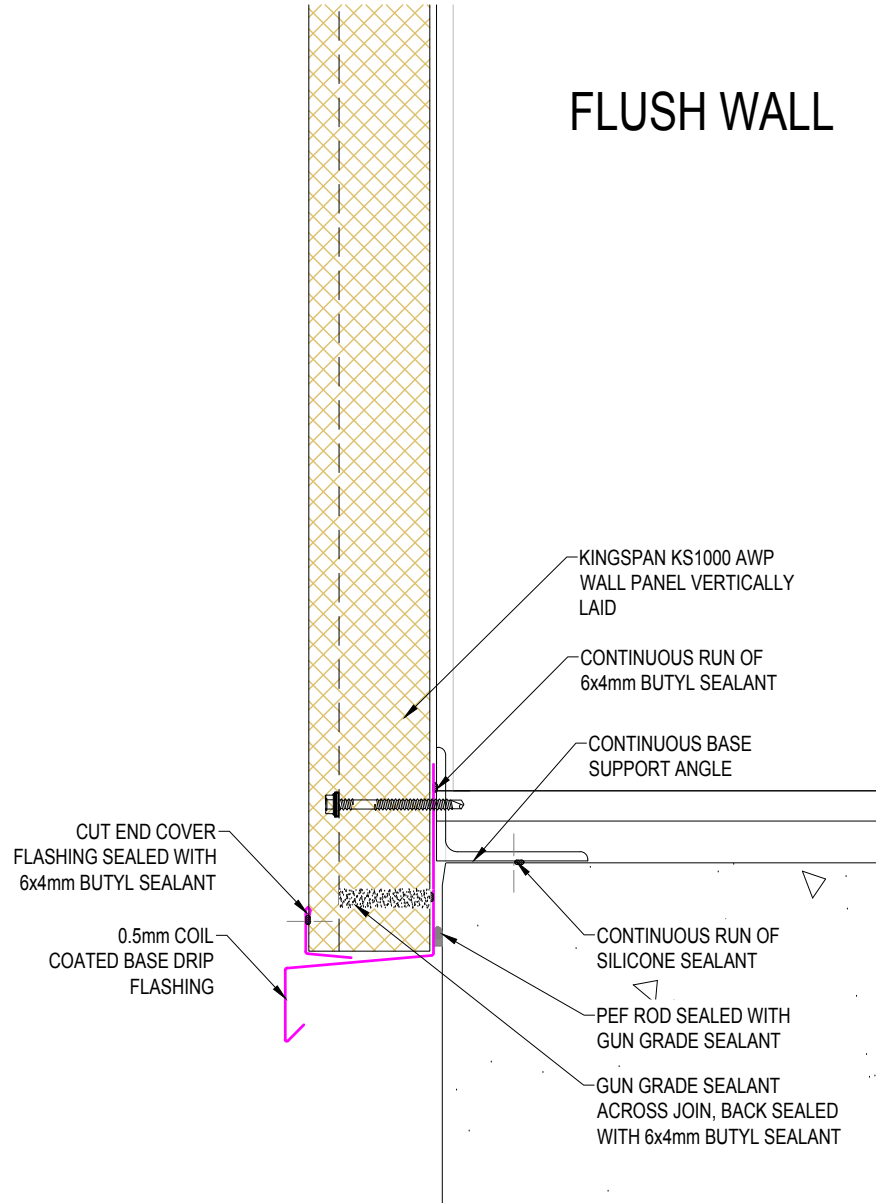


WALL VERTICAL - AWP BASE DETAIL

STEP DETAIL



FLUSH WALL

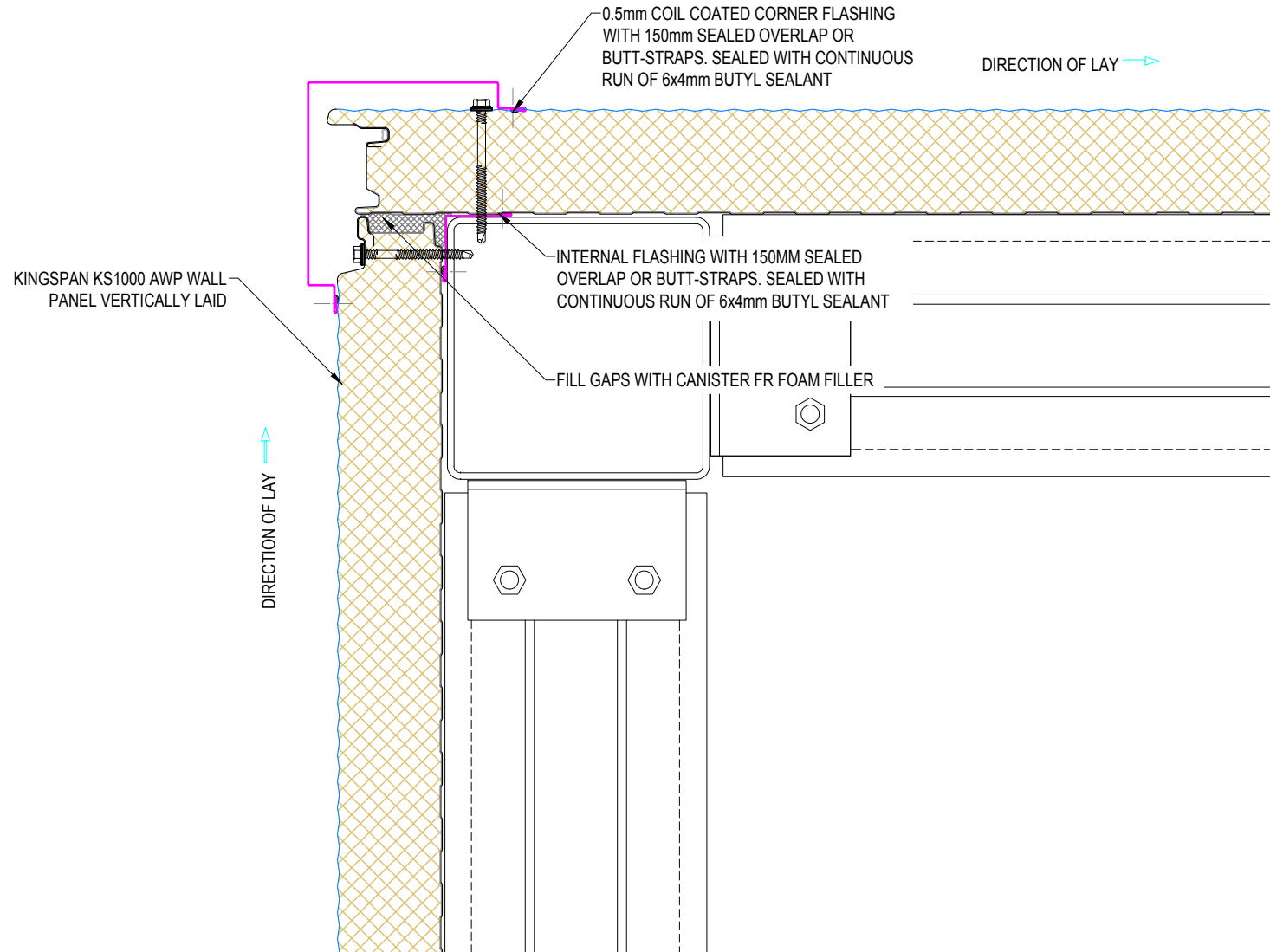


SYSTEM KS1000 AWP WALL VERTICAL_STD Q3 2015			
DESCRIPTION WALL VERTICAL - AWP BASE DETAIL			
APPROVED BY JS	DATE 22.12.15	REVISION -	
DRG REF: AWP_VS_06	SCALE 1:5	SHEET 1 of 1	PAPER SIZE A4
This document remains the property of Kingspan Ltd under copyright laws. Licence is granted to use this document and its contents in connection with Kingspan Ltd products only. ©Kingspan Ltd			

DO NOT SCALE. IF IN DOUBT ASK

New Zealand: Kingspan Ltd
97 Montreal St
Christchurch
Tel: +64 (3) 260 5530
Fax: +64 (3) 260 5539
Freephone: 0800 121280
email: info@kingspanpanels.co.nz
www.kingspanpanels.co.nz

WALL VERTICAL - EXTERNAL CORNER



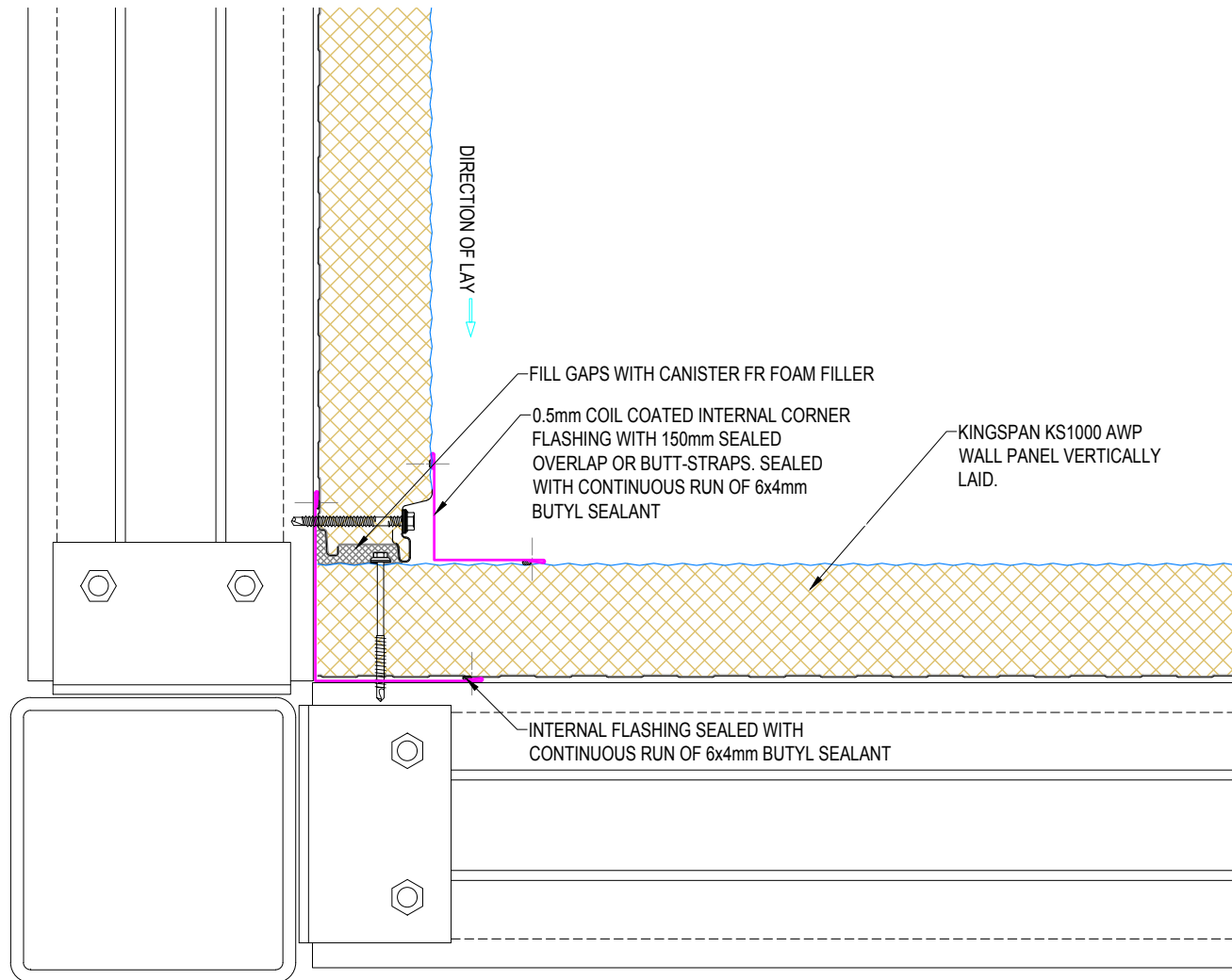
SYSTEM KS1000 AWP WALL VERTICAL_STD Q3 2015			
DESCRIPTION WALL VERTICAL - EXTERNAL CORNER			
APPROVED BY JS	DATE 22.12.15	REVISION -	
DRG REF: AWP_VS_07	SCALE 1:5	SHEET 1 of 1	PAPER SIZE A4

This document remains the property of Kingspan Ltd under copyright laws. Licence is granted to use this document and its contents in connection with Kingspan Ltd products only.
©Kingspan Ltd

DO NOT SCALE. IF IN DOUBT ASK

New Zealand: Kingspan Ltd
97 Montreal St
Christchurch
Tel: +64 (3) 260 5530
Fax: +64 (3) 260 5539
Freephone: 0800 121280
email: info@kingspanpanels.co.nz
www.kingspanpanels.co.nz

WALL VERTICAL - INTERNAL CORNER



SYSTEM KS1000 AWP WALL VERTICAL_STD Q3 2015			
DESCRIPTION WALL VERTICAL - INTERNAL CORNER			
APPROVED BY JS	DATE 22.12.15	REVISION -	
DRG REF: AWP_VS_08	SCALE 1:5	SHEET 1 of 1	PAPER SIZE A4

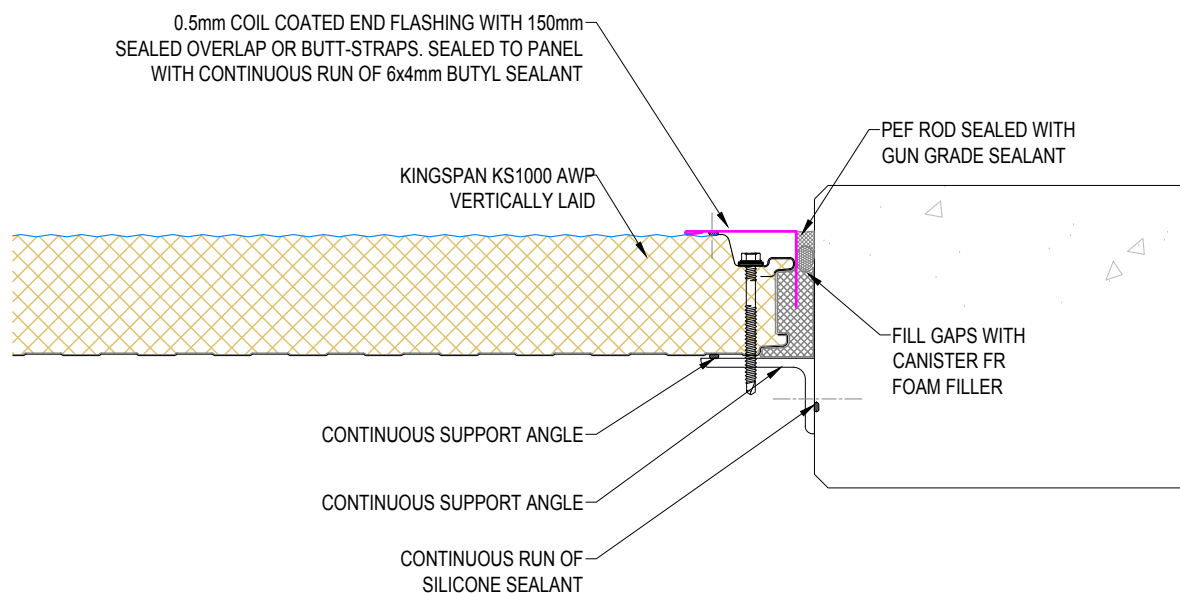
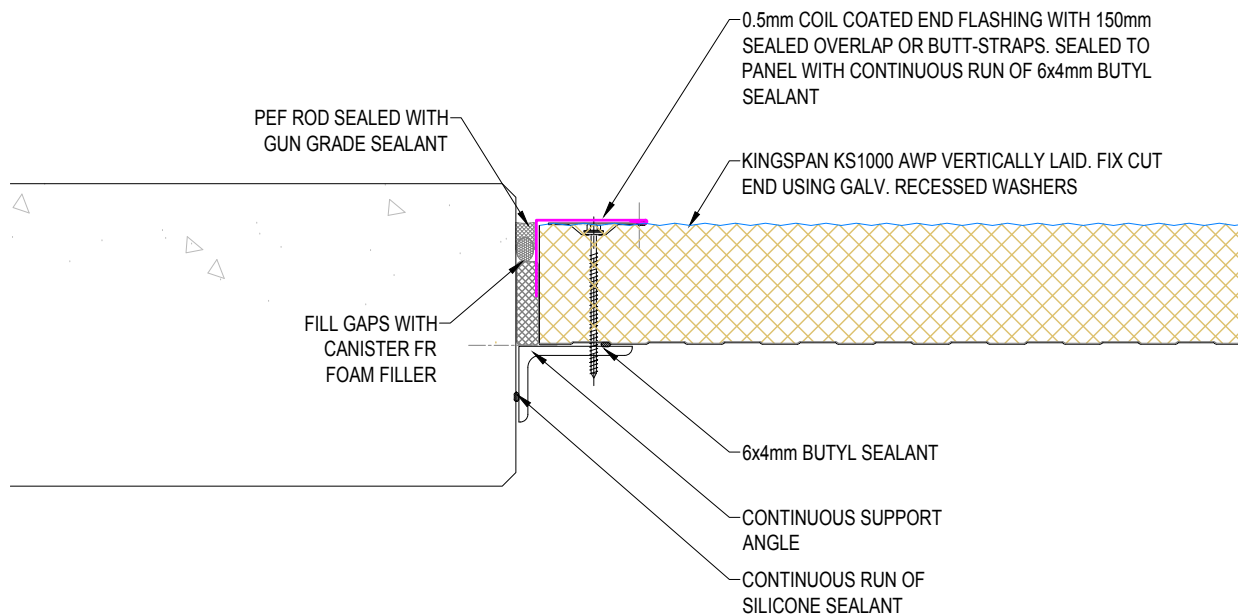
This document remains the property of Kingspan Ltd under copyright laws. Licence is granted to use this document and its contents in connection with Kingspan Ltd products only.
©Kingspan Ltd

DO NOT SCALE. IF IN DOUBT ASK

New Zealand: Kingspan Ltd
97 Montreal St
Christchurch
Tel: +64 (3) 260 5530
Fax: +64 (3) 260 5539
Freephone: 0800 121280
email: info@kingspanpanels.co.nz
www.kingspanpanels.co.nz



WALL VERTICAL ABUTMENT TO CONCRETE



SYSTEM KS1000 AWP WALL VERTICAL_STD Q3 2015			
DESCRIPTION WALL VERTICAL ABUTMENT TO CONCRETE			
APPROVED BY JS	DATE 22.12.15	REVISION -	
DRG REF: AWP_VS_09	SCALE 1:5	SHEET 1 of 1	PAPER SIZE A4

This document remains the property of Kingspan Ltd under copyright laws. Licence is granted to use this document and its contents in connection with Kingspan Ltd products only.
©Kingspan Ltd

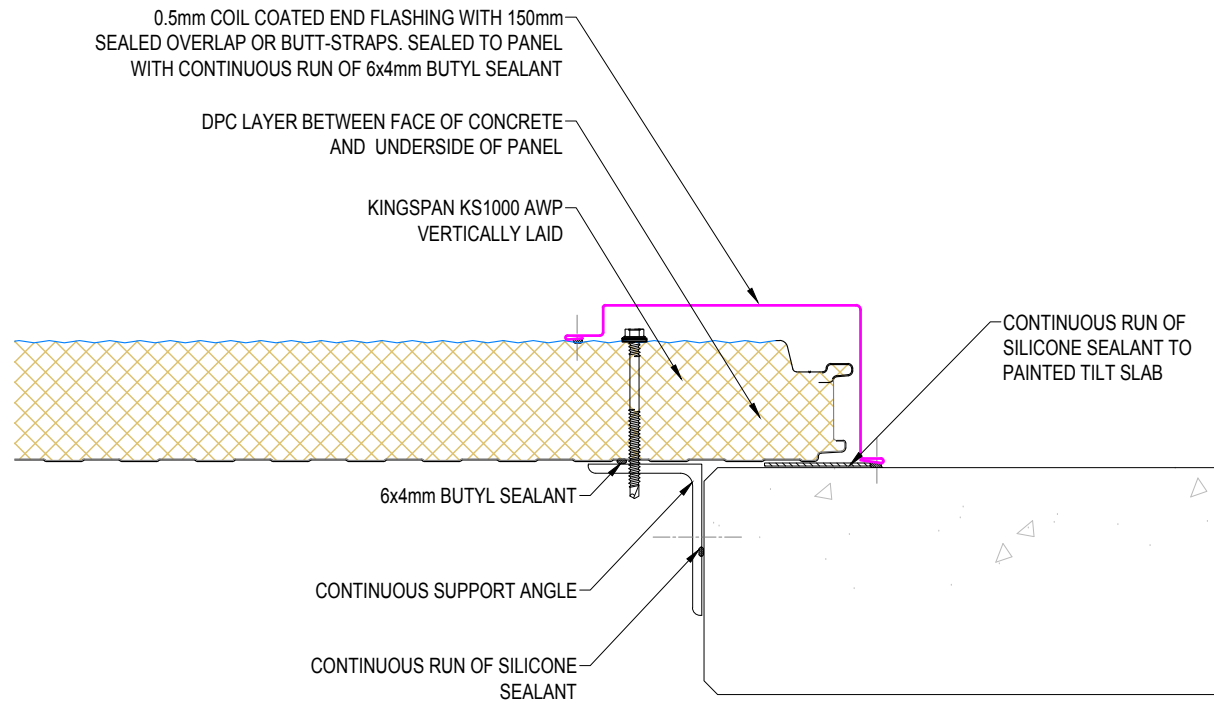
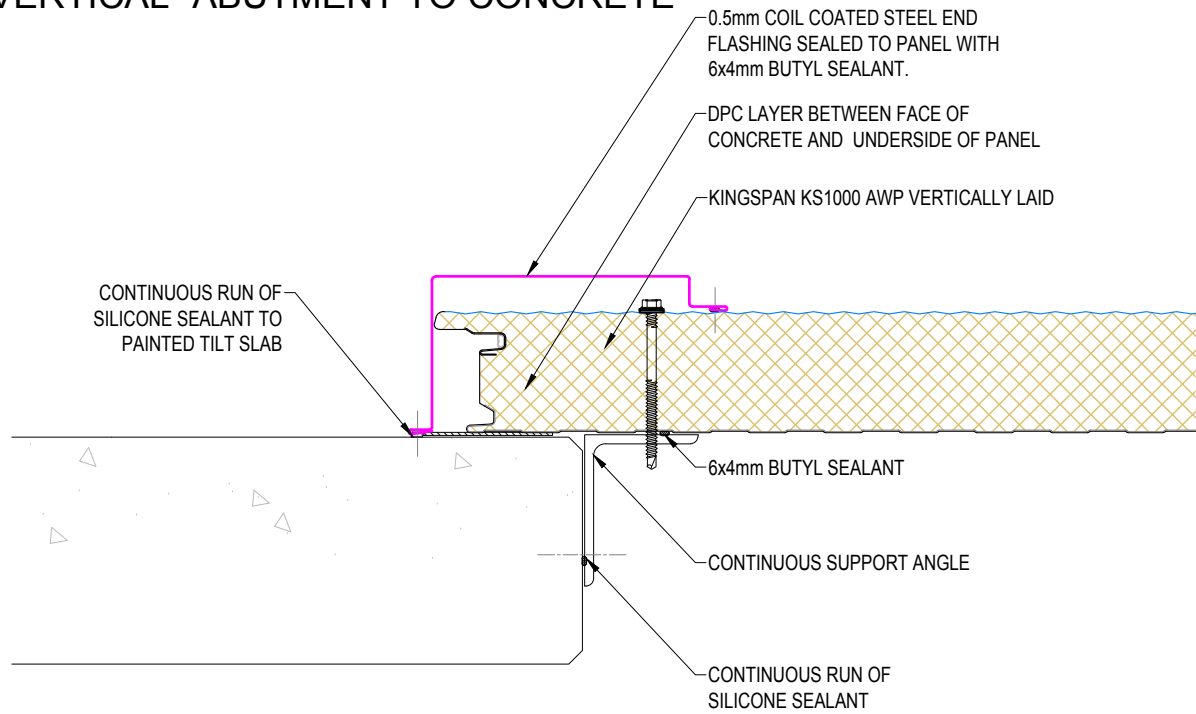
DO NOT SCALE. IF IN DOUBT ASK

New Zealand: Kingspan Ltd
97 Montreal St
Christchurch
Tel: +64 (3) 260 5530
Fax: +64 (3) 260 5539
Freephone: 0800 121280
email: info@kingspanpanels.co.nz
www.kingspanpanels.co.nz



WALL VERTICAL- ABUTMENT TO CONCRETE

G:\Technical\current\Drawings\current 2015\01\AWP Wall Vertical\KS1000 AWP Wall Vertical_Std Q3 2015.dwg, AWP_VS_10, 8/12/2016 10:29:55 a.m.



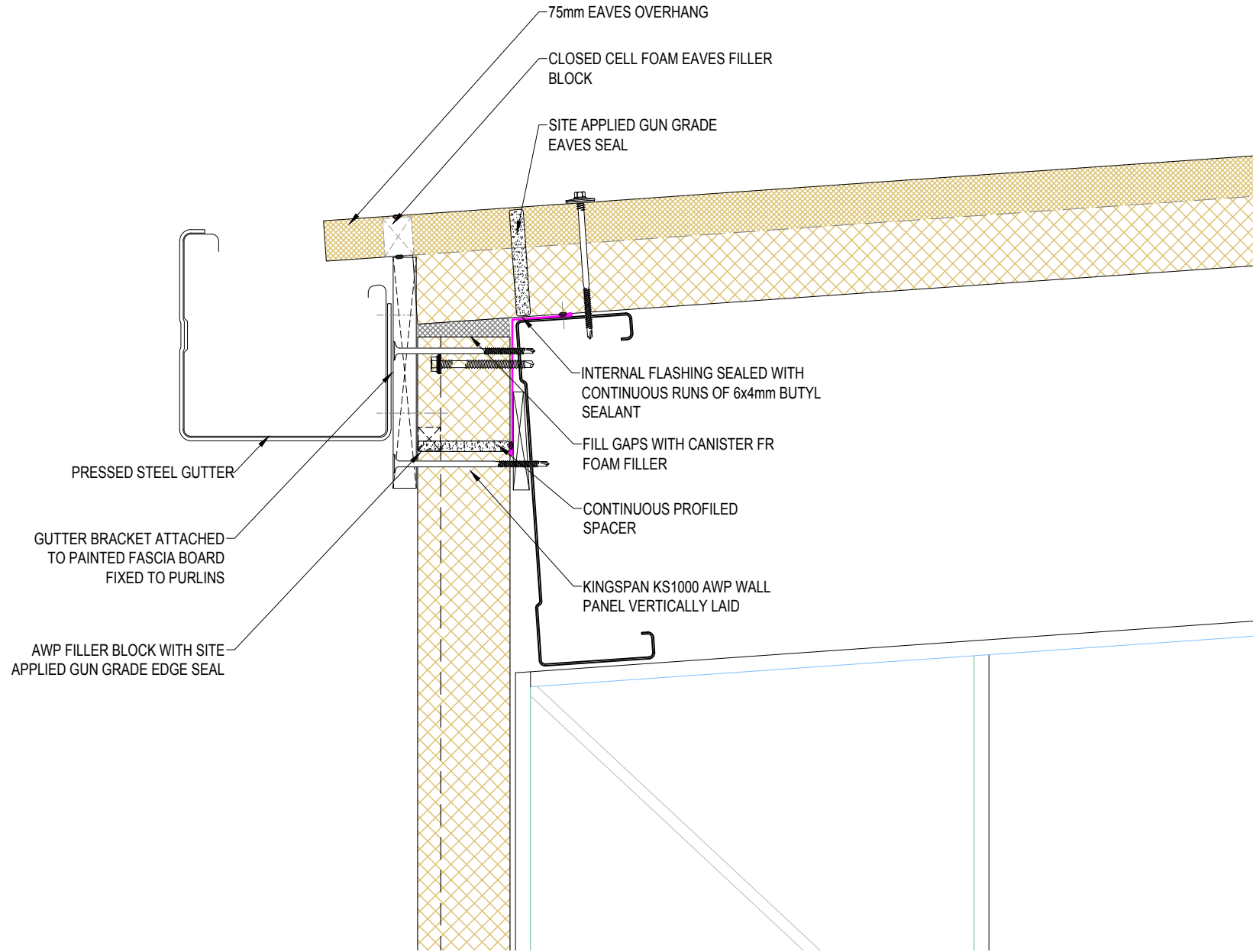
SYSTEM KS1000 AWP WALL VERTICAL_STD Q3 2015			
DESCRIPTION WALL VERTICAL- ABUTMENT TO CONCRETE			
APPROVED BY JS	DATE 22.12.15	REVISION -	
DRG REF: AWP_VS_10	SCALE 1:5	SHEET 1 of 1	PAPER SIZE A4

This document remains the property of Kingspan Ltd under copyright laws. Licence is granted to use this document and its contents in connection with Kingspan Ltd products only.
©Kingspan Ltd

DO NOT SCALE. IF IN DOUBT ASK

New Zealand: Kingspan Ltd
97 Montreal St
Christchurch
Tel: +64 (3) 260 5530
Fax: +64 (3) 260 5539
Freephone: 0800 121280
email: info@kingspanpanels.co.nz
www.kingspanpanels.co.nz

WALL VERTICAL - EAVES GUTTER



SYSTEM KS1000 AWP WALL VERTICAL_STD Q3 2015			
DESCRIPTION WALL VERTICAL - EAVES GUTTER			
APPROVED BY JS	DATE 22.12.15	REVISION -	
DRG REF: AWP_VS_11	SCALE 1:5	SHEET 1 of 1	PAPER SIZE A4

This document remains the property of Kingspan Ltd under copyright laws. Licence is granted to use this document and its contents in connection with Kingspan Ltd products only.
©Kingspan Ltd

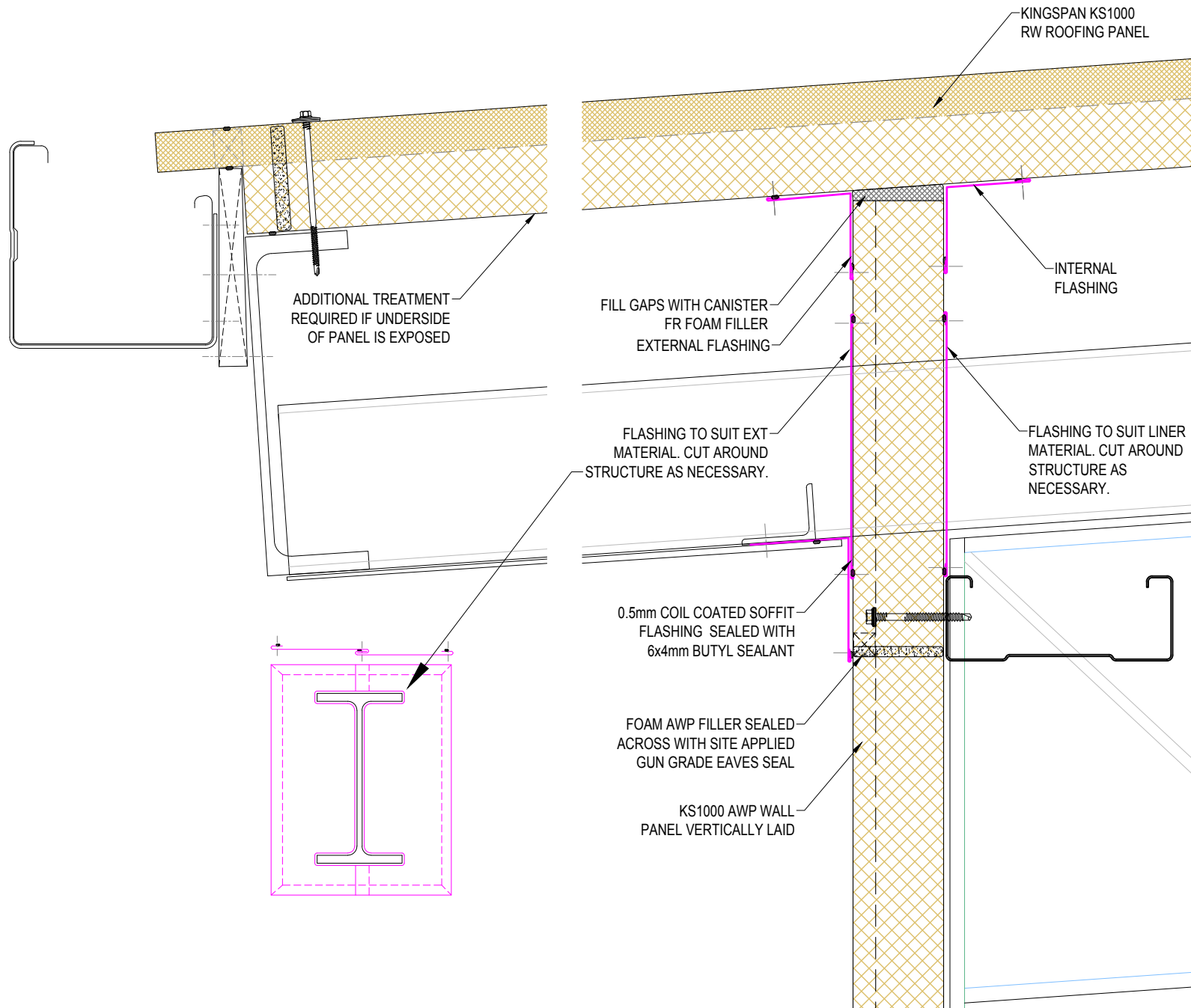
DO NOT SCALE. IF IN DOUBT ASK

New Zealand: Kingspan Ltd
97 Montreal St
Christchurch
Tel: +64 (3) 260 5530
Fax: +64 (3) 260 5539
Freephone: 0800 121280
email: info@kingspanpanels.co.nz
www.kingspanpanels.co.nz



G:\Technical\current\Drawings\current 2015\Q1\AWP Wall Vertical\KS1000 AWP Wall Vertical_Std Q3 2015.dwg, AWP_VS_11, 8/12/2015 10:29:55 a.m.

WALL VERTICAL - OVERHANGING EAVES GUTTER

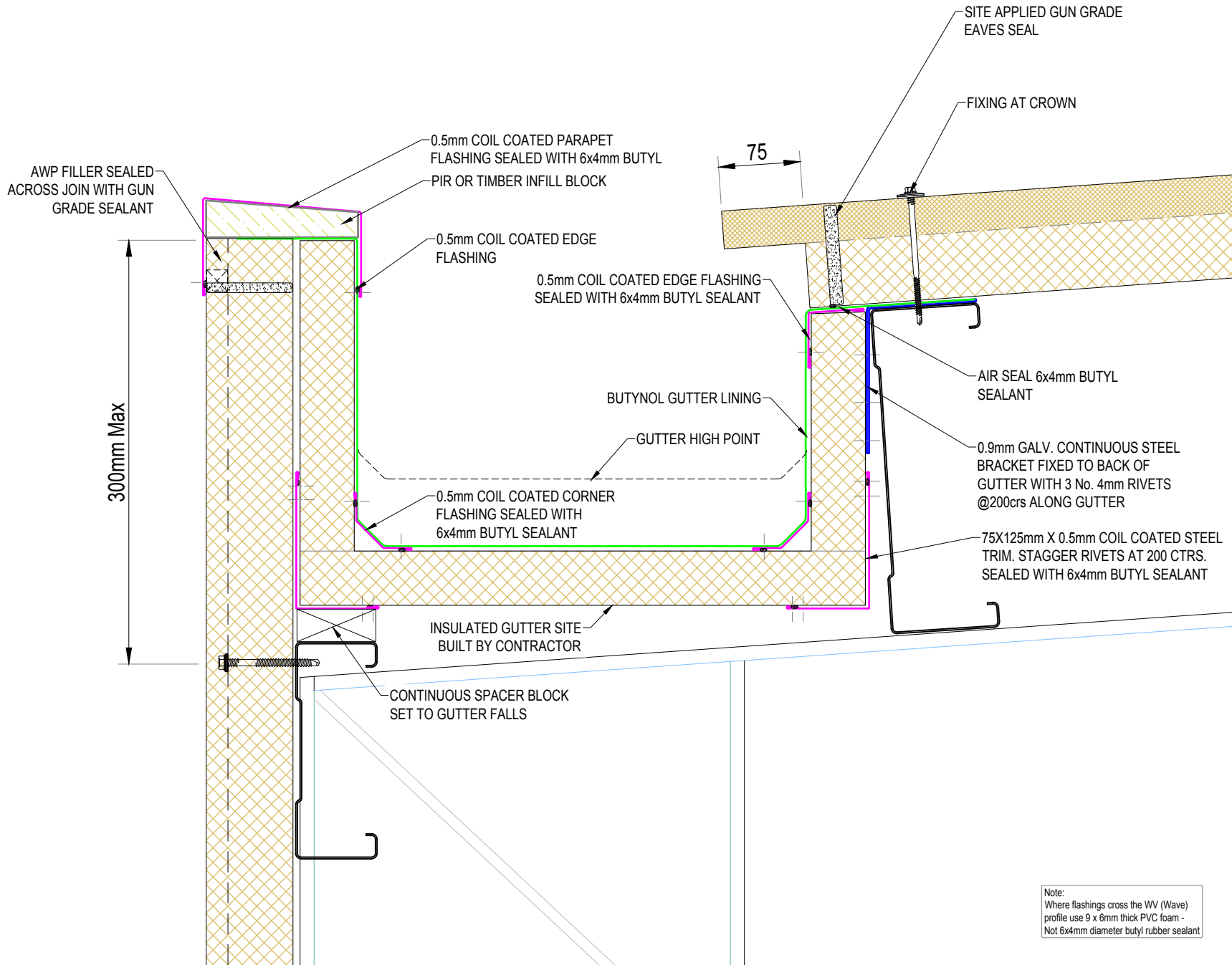


SYSTEM KS1000 AWP WALL VERTICAL_STD Q3 2015			
DESCRIPTION WALL VERTICAL - OVERHANGING EAVES GUTTER			
APPROVED BY JS	DATE 22.12.15	REVISION -	
DRG REF: AWP_VS_12	SCALE 1:5	SHEET 1 of 1	PAPER SIZE A4
This document remains the property of Kingspan Ltd under copyright laws. Licence is granted to use this document and its contents in connection with Kingspan Ltd products only. ©Kingspan Ltd			

DO NOT SCALE. IF IN DOUBT ASK

New Zealand: Kingspan Ltd
97 Montreal St
Christchurch
Tel: +64 (3) 260 5530
Fax: +64 (3) 260 5539
Freephone: 0800 121280
email: info@kingspanpanels.co.nz
www.kingspanpanels.co.nz

WALL VERTICAL - BOUNDARY GUTTER



SYSTEM KS1000 AWP WALL VERTICAL_STD Q3 2015			
DESCRIPTION WALL VERTICAL - BOUNDARY GUTTER			
APPROVED BY JS	DATE 30.08.16	REVISION 1	
DRG REF: AWP_VS_13	SCALE 1:5	SHEET 1 of 1	PAPER SIZE A4

This document remains the property of Kingspan Ltd under copyright laws. Licence is granted to use this document and its contents in connection with Kingspan Ltd products only.
©Kingspan Ltd

DO NOT SCALE. IF IN DOUBT ASK

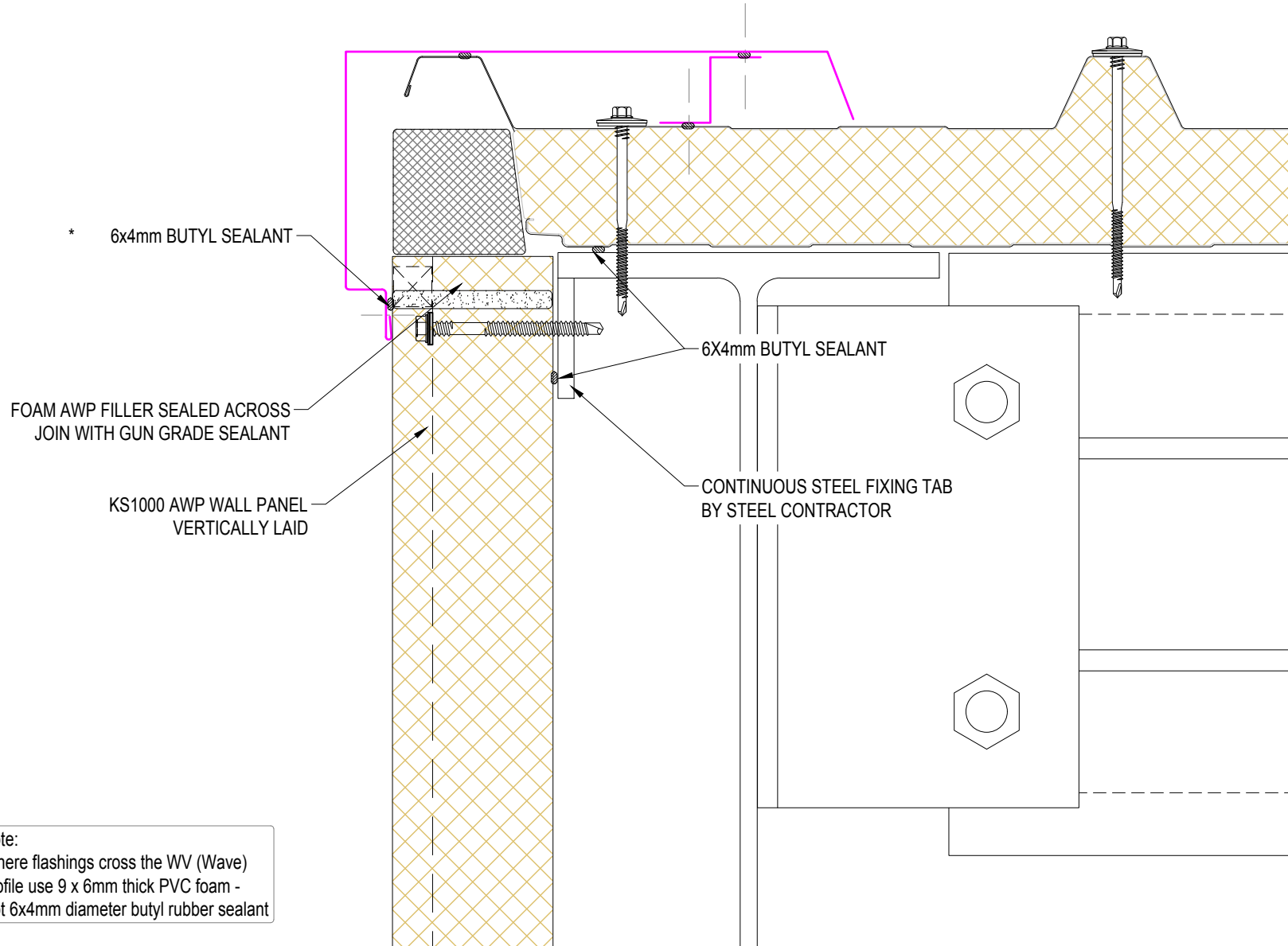
New Zealand: Kingspan Ltd
97 Montreal St
Christchurch
Tel: +64 (3) 260 5530
Fax: +64 (3) 260 5539
Freephone: 0800 121280
email: info@kingspanpanels.co.nz
www.kingspanpanels.co.nz

Note:
Where flashings cross the WV (Wave) profile use 9 x 6mm thick PVC foam -
Not 6x4mm diameter butyl rubber sealant

G:\Technical\current\Drawings\current 2015\01\AWP Wall Vertical\KS1000 AWP Wall Vertical_Std Q3 2015.dwg, AWP_VS_13, 8/12/2016 10:29:56 a.m.

WALL VERTICAL - VERGE_1

DIRECTION
OF LAY
→



Note:
Where flashings cross the WV (Wave) profile use 9 x 6mm thick PVC foam - Not 6x4mm diameter butyl rubber sealant

SYSTEM KS1000 AWP WALL VERTICAL_STD Q3 2015			
DESCRIPTION WALL VERTICAL - VERGE_1			
APPROVED BY JS	DATE 30.08.16	REVISION 1	
DRG REF: AWP_VS_14	SCALE 1:3	SHEET 1 of 1	PAPER SIZE A4

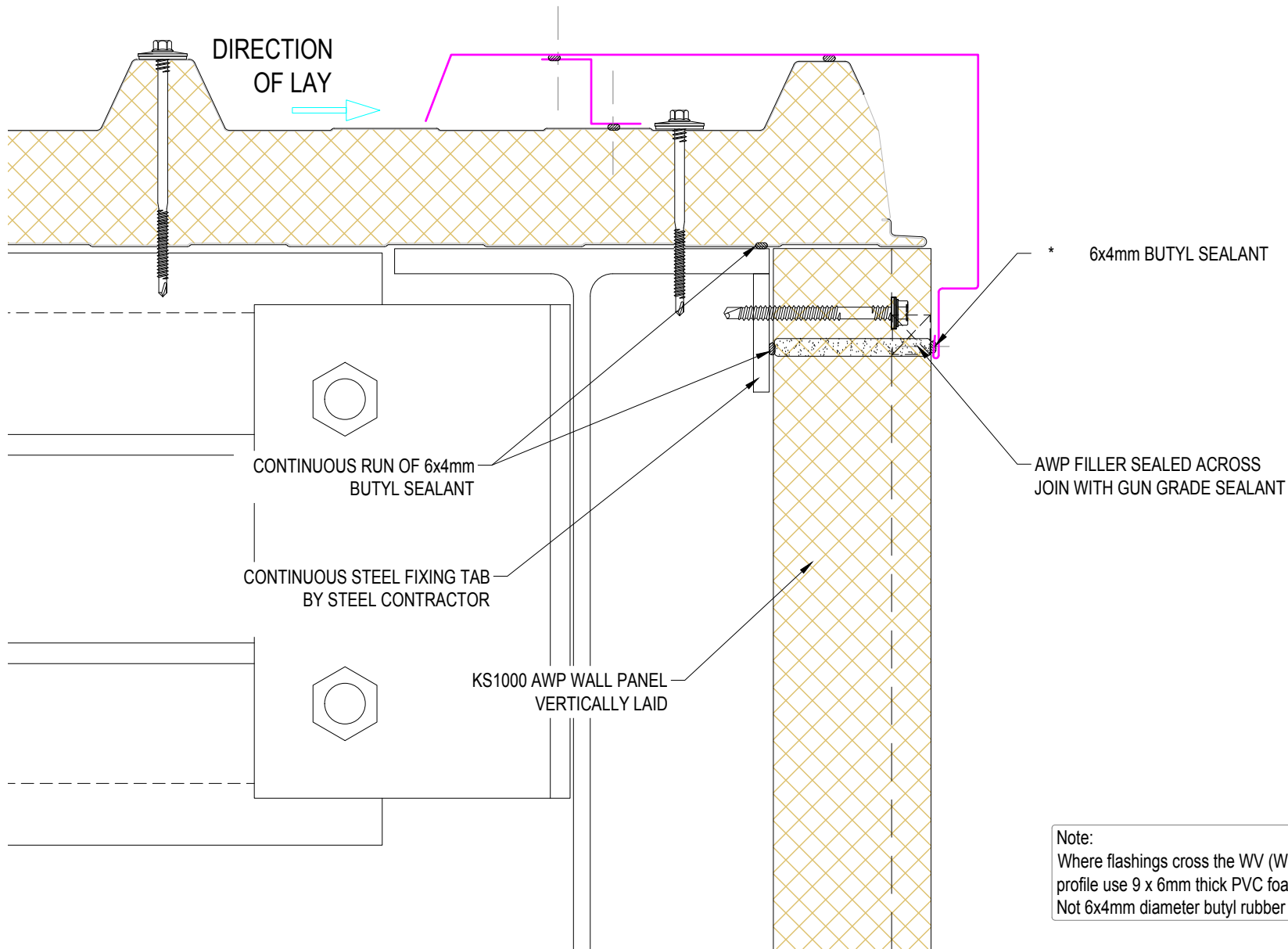
This document remains the property of Kingspan Ltd under copyright laws. Licence is granted to use this document and its contents in connection with Kingspan Ltd products only.
©Kingspan Ltd

DO NOT SCALE. IF IN DOUBT ASK

New Zealand: Kingspan Ltd
97 Montreal St
Christchurch
Tel: +64 (3) 260 5530
Fax: +64 (3) 260 5539
Freephone: 0800 121280
email: info@kingspanpanels.co.nz
www.kingspanpanels.co.nz

Kingspan.
Insulated Panels

WALL VERTICAL - VERGE_2



Note:
 Where flashings cross the WV (Wave) profile use 9 x 6mm thick PVC foam - Not 6x4mm diameter butyl rubber sealant

SYSTEM KS1000 AWP WALL VERTICAL_STD Q3 2015			
DESCRIPTION WALL VERTICAL - VERGE_2			
APPROVED BY JS	DATE 30.08.16	REVISION 1	
DRG REF: AWP_VS_15	SCALE 1:3	SHEET 1 of 1	PAPER SIZE A4

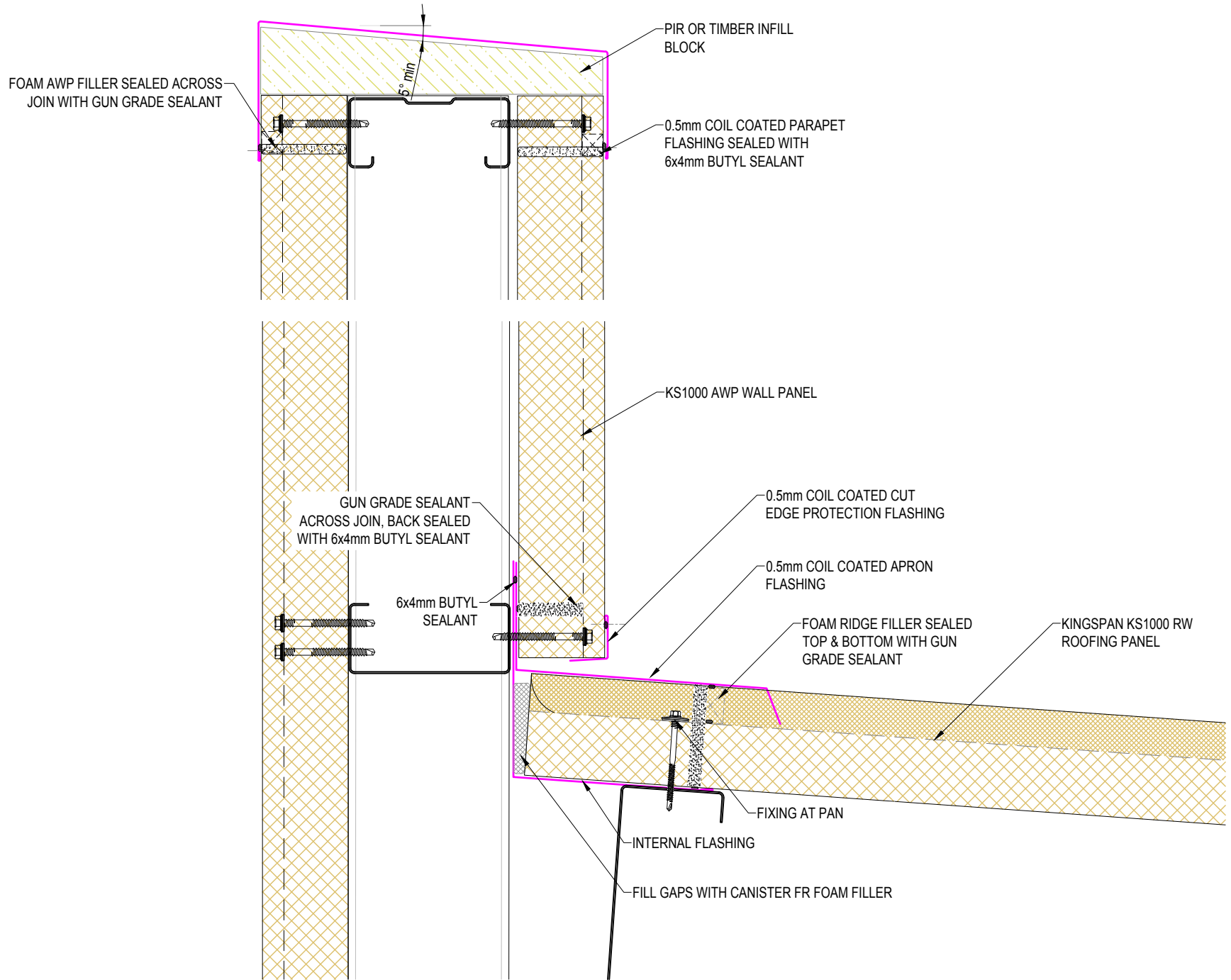
This document remains the property of Kingspan Ltd under copyright laws. Licence is granted to use this document and its contents in connection with Kingspan Ltd products only.
 ©Kingspan Ltd

DO NOT SCALE. IF IN DOUBT ASK

New Zealand: Kingspan Ltd
 97 Montreal St
 Christchurch
 Tel: +64 (3) 260 5530
 Fax: +64 (3) 260 5539
 Freephone: 0800 121280
 email: info@kingspanpanels.co.nz
 www.kingspanpanels.co.nz

G:\Technical\current\Drawings\current 2015\Q1\AWP Wall Vertical\KS1000 AWP Wall Vertical_Std Q3 2015.dwg, AWP_VS_15, 8/12/2016 10:29:57 a.m.

WALL VERTICAL - SKILLION DETAIL



SYSTEM KS1000 AWP WALL VERTICAL_STD Q3 2015			
DESCRIPTION WALL VERTICAL - SKILLION DETAIL			
APPROVED BY JS	DATE 22.12.15	REVISION -	
DRG REF: AWP_VS_16	SCALE 1:5	SHEET 1 of 1	PAPER SIZE A4

This document remains the property of Kingspan Ltd under copyright laws. Licence is granted to use this document and its contents in connection with Kingspan Ltd products only.
©Kingspan Ltd

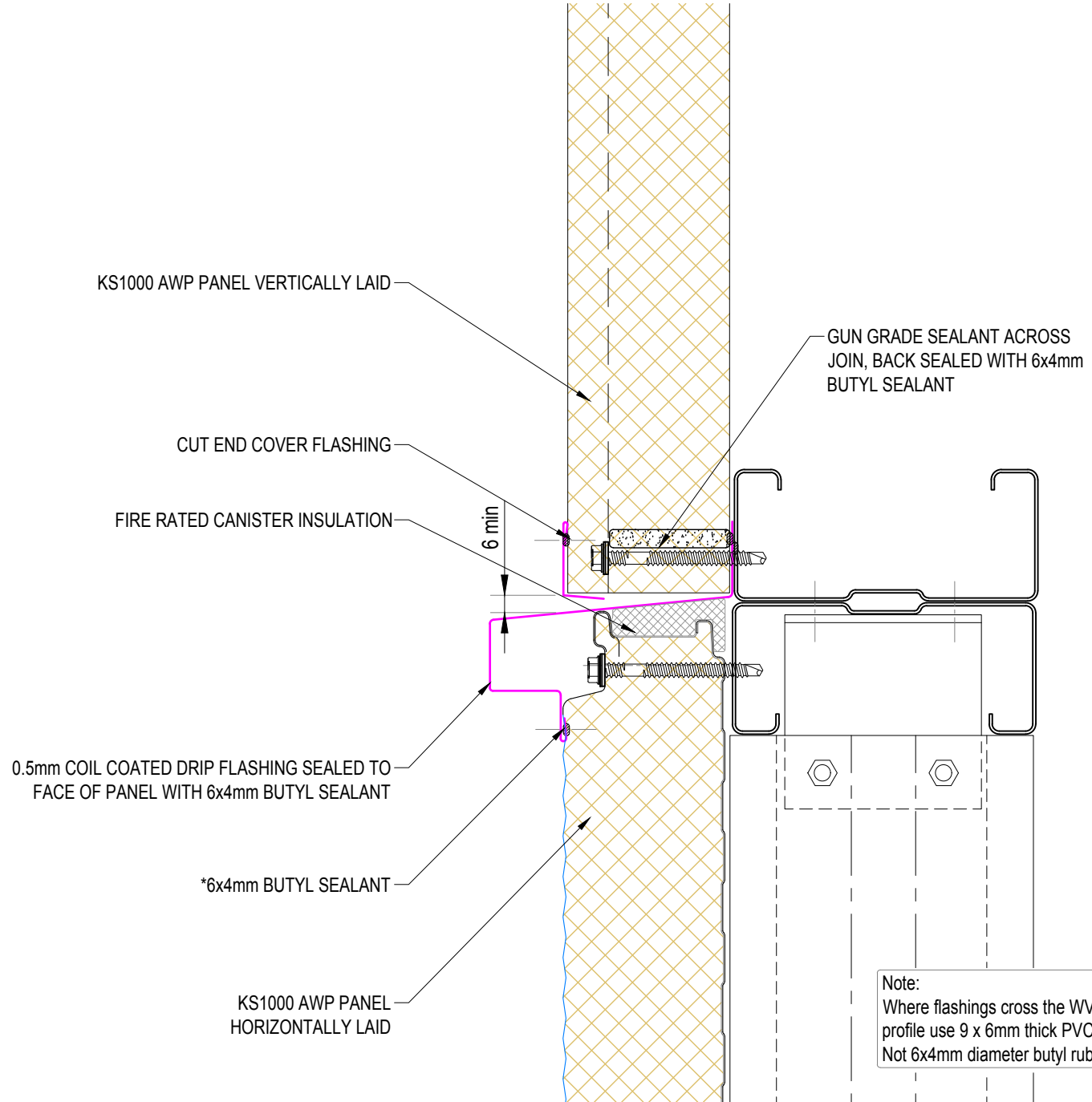
DO NOT SCALE. IF IN DOUBT ASK

New Zealand: Kingspan Ltd
97 Montreal St
Christchurch
Tel: +64 (3) 260 5530
Fax: +64 (3) 260 5539
Freephone: 0800 121280
email: info@kingspanpanels.co.nz
www.kingspanpanels.co.nz

G:\Technical\current\Drawings\current 2015\Q1\AWP Wall Vertical\KS1000 AWP Wall Vertical_Std Q3 2015.dwg, AWP_VS_16, 8/12/2015 10:29:56 a.m.

G:\Technical\current\Drawings\current 2015\01\AWP Wall Vertical\KS1000 AWP Wall Vertical_Std Q3 2015.dwg, AWP_VS_17, 8/12/2016 10:29:56 a.m.

WALL VERTICAL TO HORIZONTAL STACK JOINT DETAIL



Note:
 Where flashings cross the WV (Wave) profile use 9 x 6mm thick PVC foam -
 Not 6x4mm diameter butyl rubber sealant

SYSTEM KS1000 AWP WALL VERTICAL_STD Q3 2015			
DESCRIPTION WALL VERTICAL TO HORIZONTAL STACK JOINT DETAIL			
APPROVED BY JS	DATE 30.08.16	REVISION 1	
DRG REF: AWP_VS_17	SCALE 1:3	SHEET 1 of 1	PAPER SIZE A4

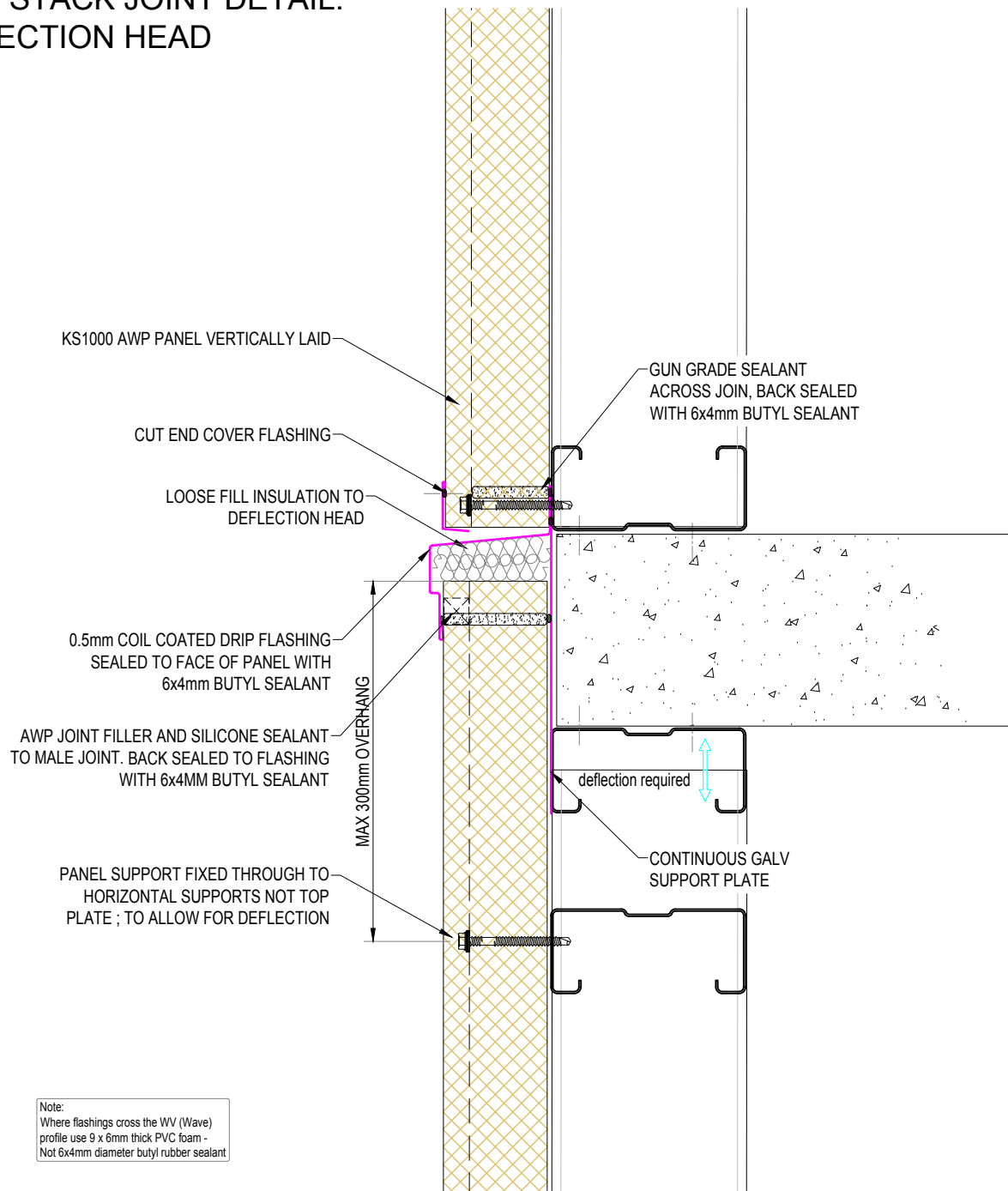
This document remains the property of Kingspan Ltd under copyright laws. Licence is granted to use this document and its contents in connection with Kingspan Ltd products only.
 ©Kingspan Ltd

DO NOT SCALE. IF IN DOUBT ASK

New Zealand: Kingspan Ltd
 97 Montreal St
 Christchurch
 Tel: +64 (3) 260 5530
 Fax: +64 (3) 260 5539
 Freephone: 0800 121280
 email: info@kingspanpanels.co.nz
 www.kingspanpanels.co.nz



WALL VERTICAL STACK JOINT DETAIL. VERTICAL DEFLECTION HEAD



Note:
Where flashings cross the WV (Wave)
profile use 9 x 6mm thick PVC foam -
Not 6x4mm diameter butyl rubber sealant

SYSTEM KS1000 AWP WALL VERTICAL_STD Q3 2015			
DESCRIPTION WALL VERTICAL STACK JOINT DETAIL. VERTICAL DEFLECTION HEAD			
APPROVED BY JS	DATE 30.08.16	REVISION 1	
DRG REF: AWP_VS_17A	SCALE 1:5	SHEET 1 of 1	PAPER SIZE A4

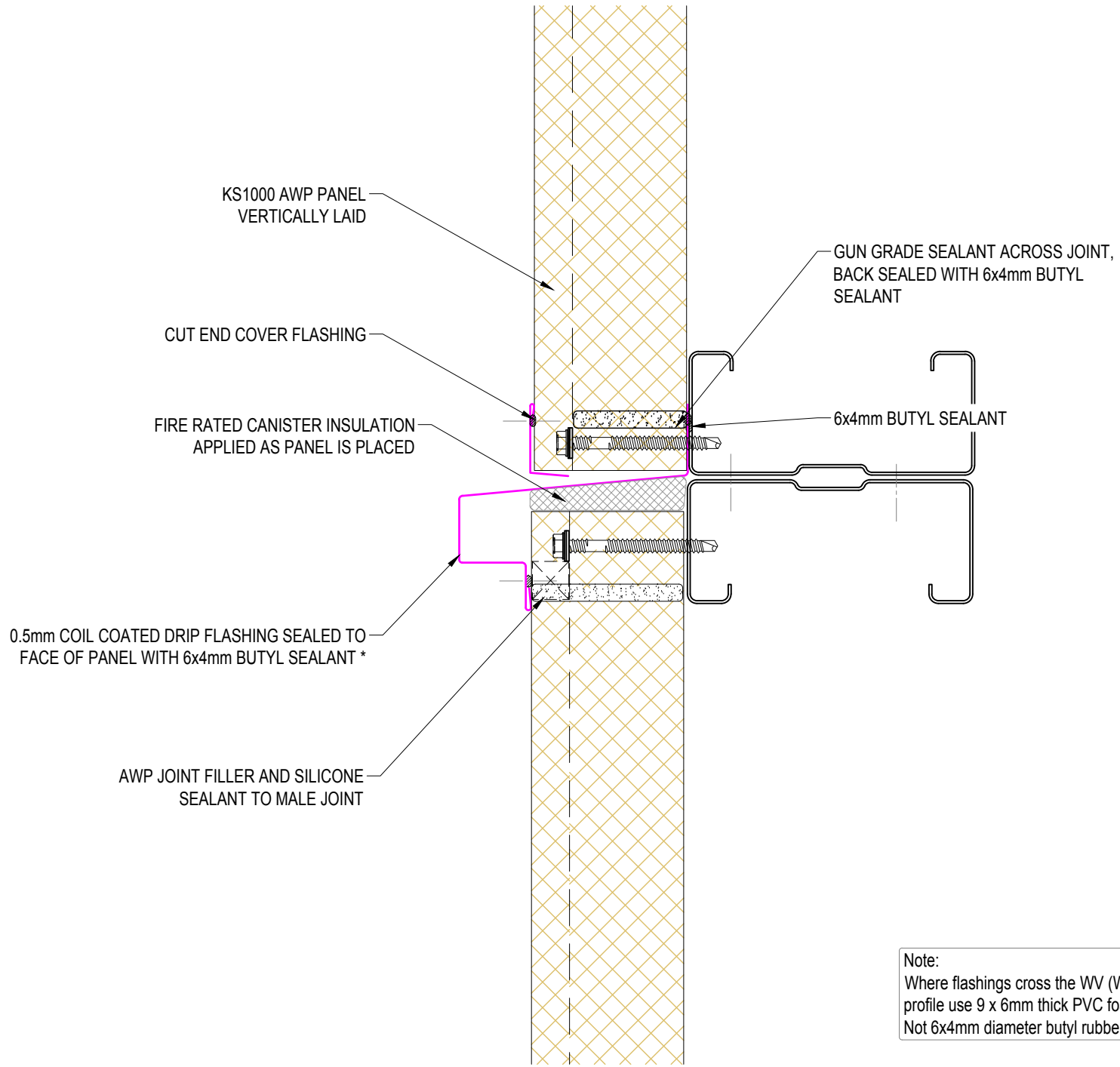
This document remains the property of Kingspan Ltd under copyright laws. Licence is granted to use this document and its contents in connection with Kingspan Ltd products only.
©Kingspan Ltd

DO NOT SCALE. IF IN DOUBT ASK

New Zealand: Kingspan Ltd
97 Montreal St
Christchurch
Tel: +64 (3) 260 5530
Fax: +64 (3) 260 5539
Freephone: 0800 121280
email: info@kingspanpanels.co.nz
www.kingspanpanels.co.nz

G:\Technical\current\Drawings\current.2013 Q1\AWP Wall Vertical\KS1000 AWP Wall Vertical STD Q3 2015.dwg, AWP_VS_17A, 8/12/2016 10:29:39 a.m.

WALL VERTICAL TO VERTICAL STACK JOINT DETAIL



Note:
 Where flashings cross the WV (Wave) profile use 9 x 6mm thick PVC foam -
 Not 6x4mm diameter butyl rubber sealant

SYSTEM KS1000 AWP WALL VERTICAL_STD Q3 2015			
DESCRIPTION WALL VERTICAL TO VERTICAL STACK JOINT DETAIL			
APPROVED BY JS	DATE 30.08.16	REVISION 1	
DRG REF: AWP_VS_17b	SCALE 1:3	SHEET 1 of 1	PAPER SIZE A4

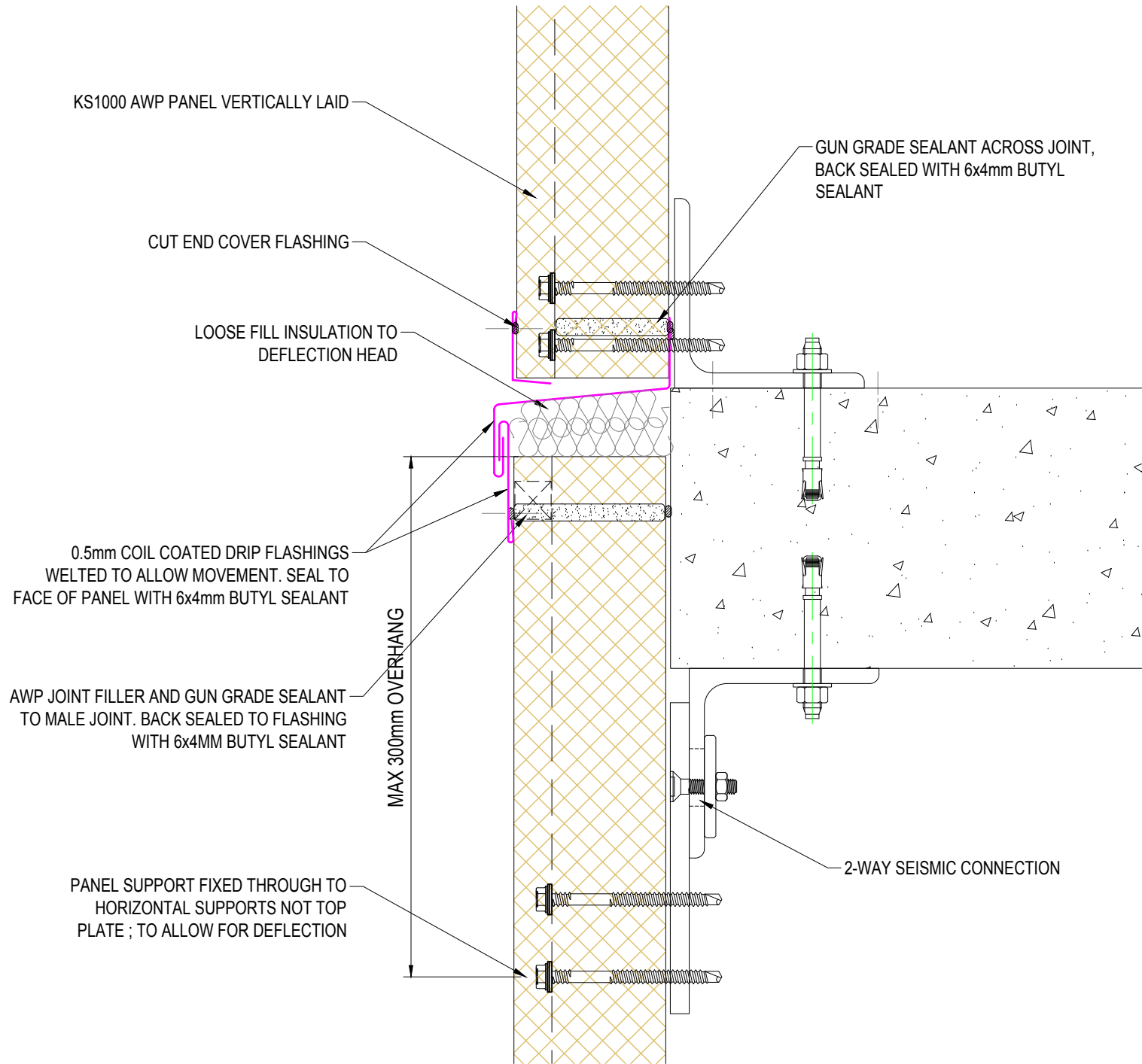
This document remains the property of Kingspan Ltd under copyright laws. Licence is granted to use this document and its contents in connection with Kingspan Ltd products only.
 ©Kingspan Ltd

DO NOT SCALE. IF IN DOUBT ASK

New Zealand: Kingspan Ltd
 97 Montreal St
 Christchurch
 Tel: +64 (3) 260 5530
 Fax: +64 (3) 260 5539
 Freephone: 0800 121280
 email: info@kingspanpanels.co.nz
 www.kingspanpanels.co.nz

G:\Technical\current\Drawings\current.2013 Q1\AWP Wall Vertical\KS1000 AWP Wall Vertical STD Q3 2015.dwg, AWP_VS_17b, 8/12/2016 10:29:39 a.m.

WALL VERTICAL TO VERTICAL DEFLECTION STACK JOINT DETAIL



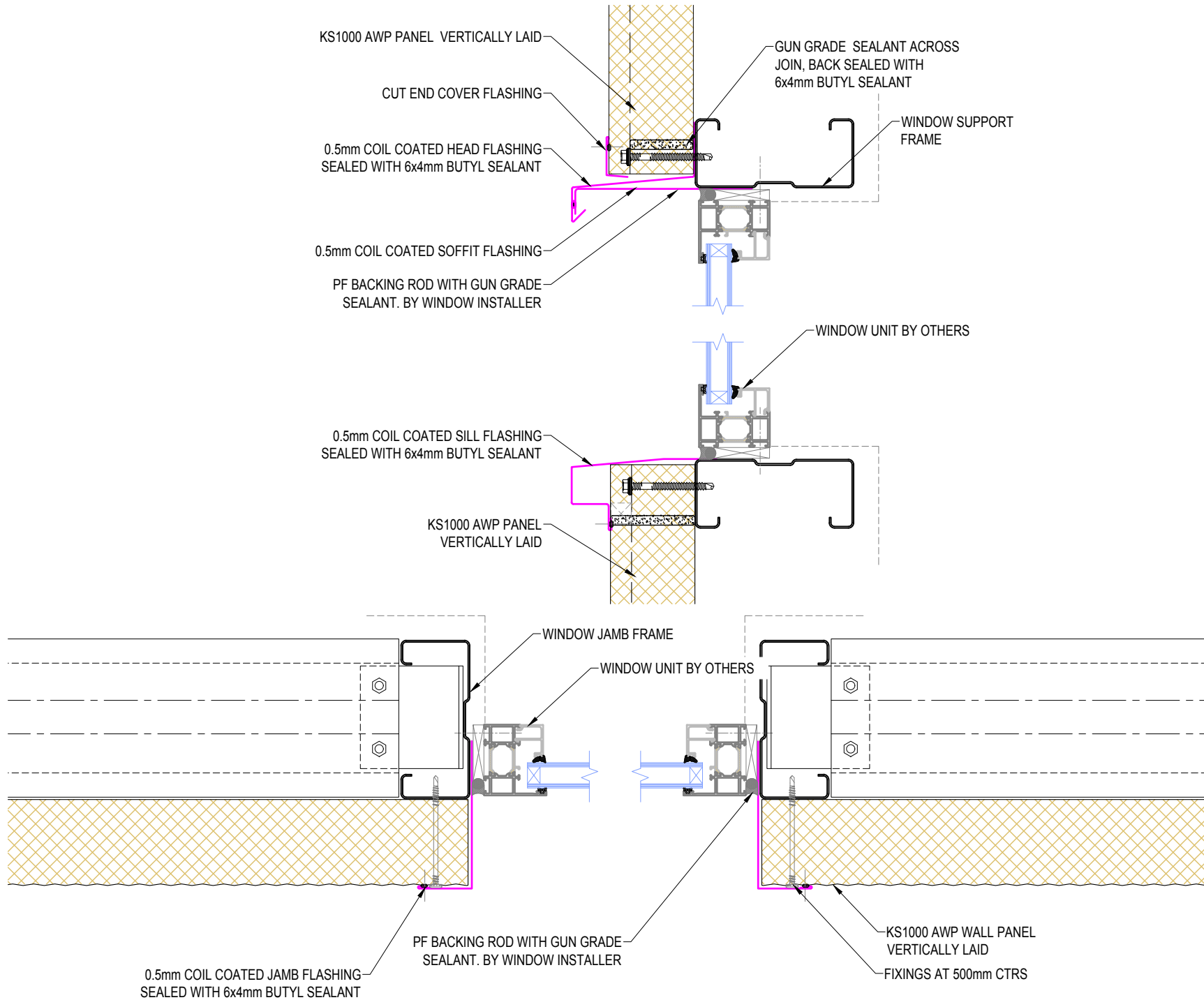
SYSTEM KS1000 AWP WALL VERTICAL_STD Q3 2015			
DESCRIPTION WALL VERTICAL TO VERTICAL DEFLECTION STACK JOINT DETAIL			
APPROVED BY JS	DATE 29.11.16	REVISION 1	
DRG REF: AWP_VS_17c	SCALE 1:3	SHEET 1 of 1	PAPER SIZE A4

This document remains the property of Kingspan Ltd under copyright laws. Licence is granted to use this document and its contents in connection with Kingspan Ltd products only.
©Kingspan Ltd

DO NOT SCALE. IF IN DOUBT ASK

New Zealand: Kingspan Ltd
97 Montreal St
Christchurch
Tel: +64 (3) 260 5530
Fax: +64 (3) 260 5539
Freephone: 0800 121280
email: info@kingspanpanels.co.nz
www.kingspanpanels.co.nz

KS1000 AWP WALL VERTICAL - WINDOW DETAIL



SYSTEM KS1000 AWP WALL VERTICAL_STD Q3 2015			
DESCRIPTION KS1000 AWP WALL VERTICAL - WINDOW DETAIL			
APPROVED BY JS	DATE 22.12.15	REVISION -	
DRG REF: AWP_VS_20	SCALE 1:5	SHEET 1 of 1	PAPER SIZE A4

This document remains the property of Kingspan Ltd under copyright laws. Licence is granted to use this document and its contents in connection with Kingspan Ltd products only.
©Kingspan Ltd

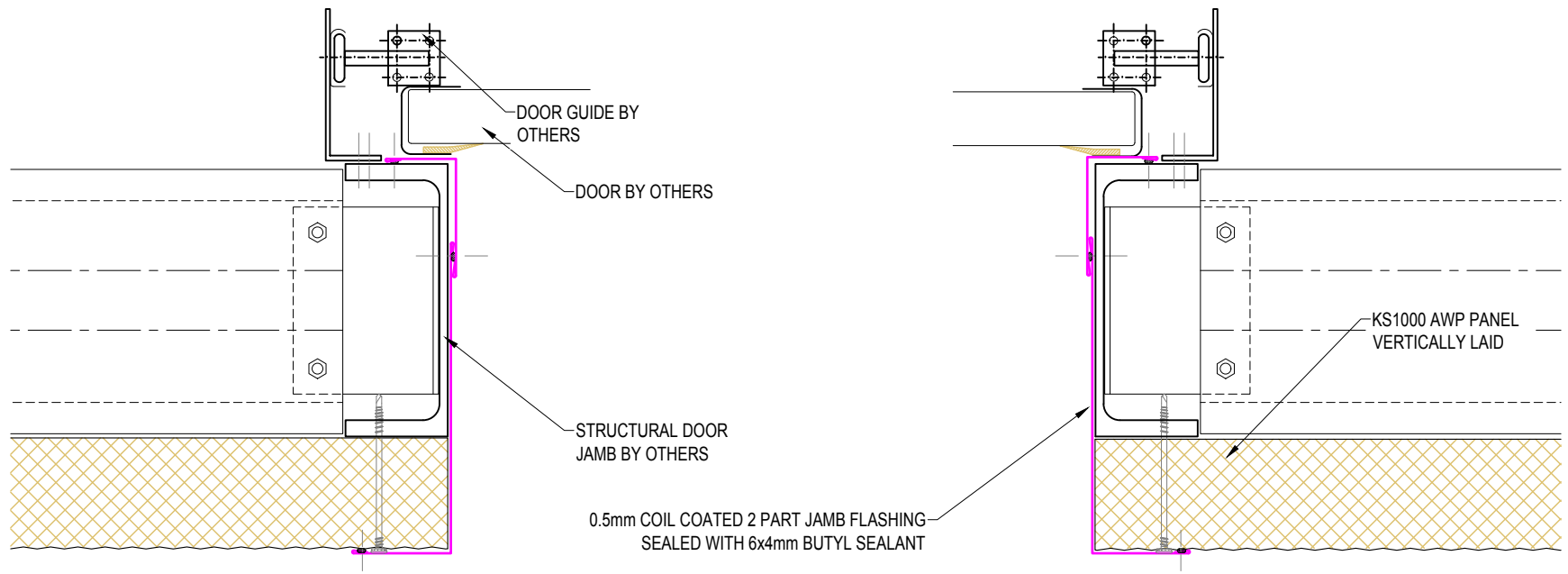
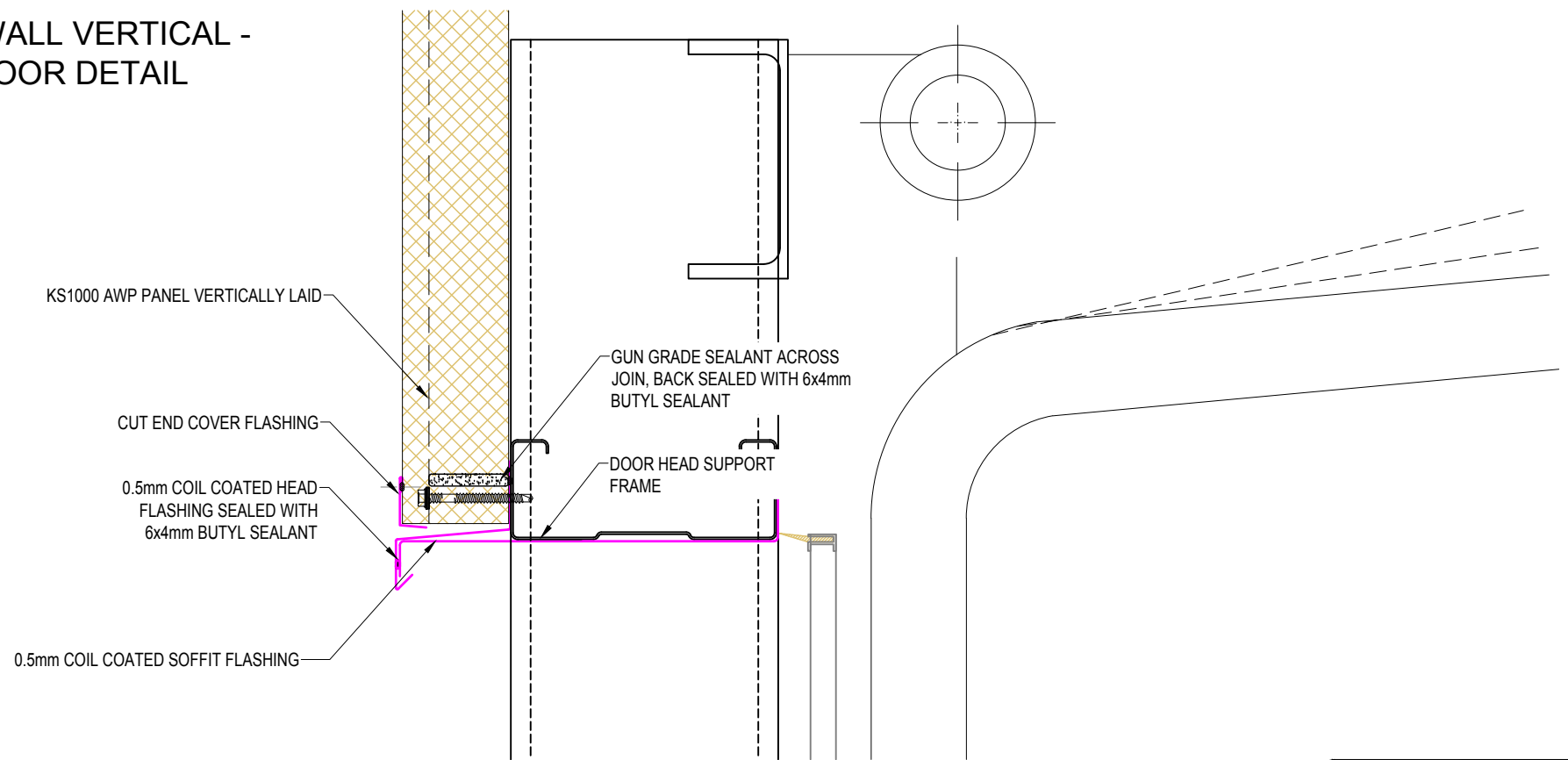
DO NOT SCALE. IF IN DOUBT ASK

New Zealand: Kingspan Ltd
97 Montreal St
Christchurch
Tel: +64 (3) 260 5530
Fax: +64 (3) 260 5539
Freephone: 0800 121280
email: info@kingspanpanels.co.nz
www.kingspanpanels.co.nz

G:\Technical\current\Drawings\current 2015\Q1\AWP Wall Vertical\KS1000 AWP Wall Vertical_Std Q3 2015.dwg, AWP_VS_20, 8/12/2015 10:30:00 a.m.

KS1000 AWP WALL VERTICAL - OVER HEAD DOOR DETAIL

G:\Technical\current\Drawings\current 2015\01\AWP Wall Vertical\KS1000 AWP Wall Vertical_Std_Q3 2015.dwg, AWP_VS_21, 8/12/2015 10:30:01 a.m.



SYSTEM KS1000 AWP WALL VERTICAL_STD Q3 2015			
DESCRIPTION KS1000 AWP WALL VERTICAL - OVER HEAD DOOR DETAIL			
APPROVED BY JS	DATE 22.12.15	REVISION -	
DRG REF: AWP_VS_21	SCALE 1:5	SHEET 1 of 1	PAPER SIZE A4
This document remains the property of Kingspan Ltd under copyright laws. Licence is granted to use this document and its contents in connection with Kingspan Ltd products only. ©Kingspan Ltd			

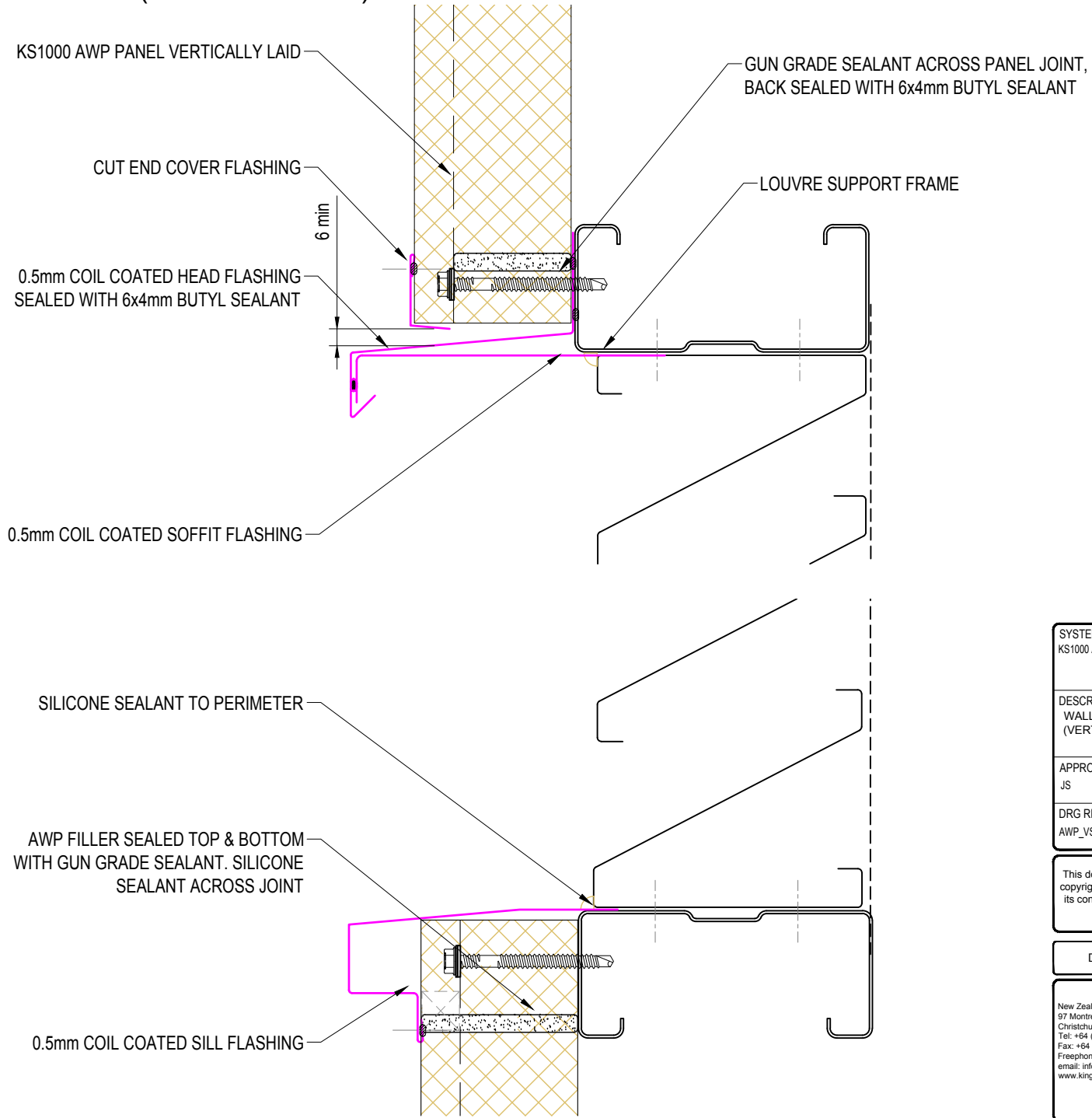
DO NOT SCALE. IF IN DOUBT ASK


New Zealand: Kingspan Ltd
 97 Montreal St
 Christchurch
 Tel: +64 (3) 260 5530
 Fax: +64 (3) 260 5539
 Freephone: 0800 121280
 email: info@kingspanpanels.co.nz
 www.kingspanpanels.co.nz



G:\Technical\current\Drawings\current 2015\01\AWP Wall Vertical\KS1000 AWP Wall Vertical_Std_Q3 2015.dwg, AWP_VS_22, 8/12/2015 10:30:01 a.m.

WALL VERTICAL LOUVRE DETAIL (VERT SECTION)

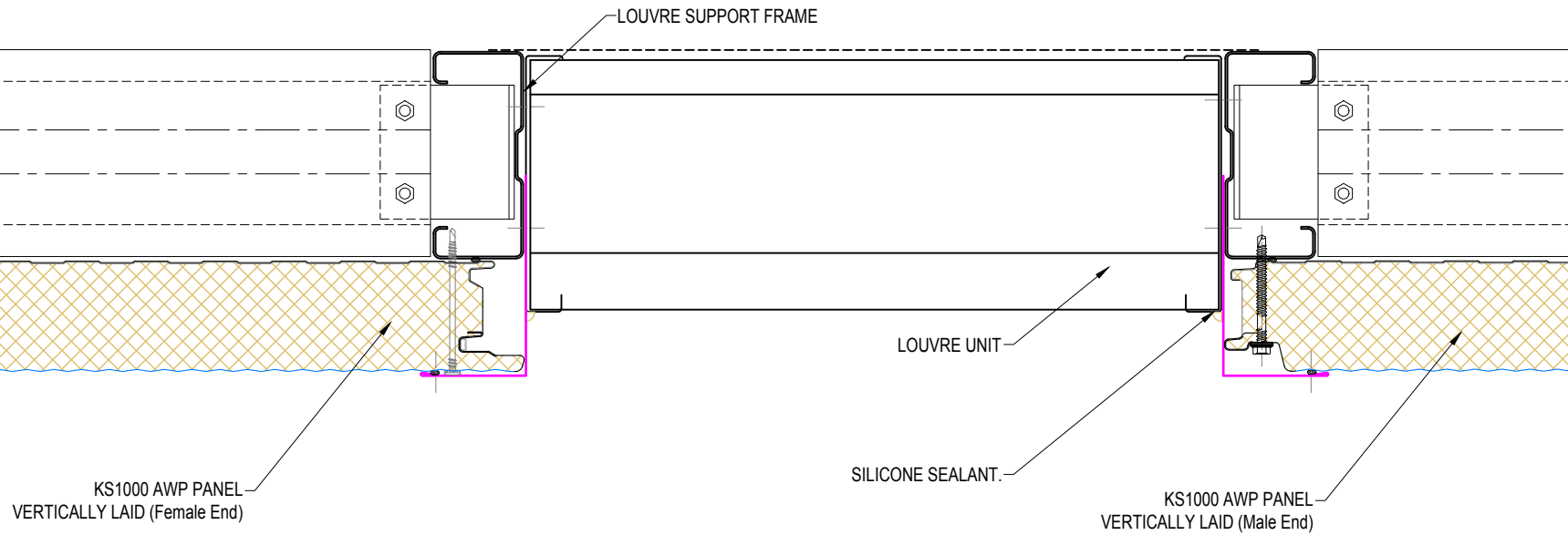


SYSTEM			
KS1000 AWP WALL VERTICAL_STD Q3 2015			
DESCRIPTION			
WALL VERTICAL LOUVRE DETAIL (VERT SECTION)			
APPROVED BY	DATE	REVISION	
JS	22.12.15	-	
DRG REF:	SCALE	SHEET	PAPER SIZE
AWP_VS_22	1:3	1 of 1	A4
This document remains the property of Kingspan Ltd under copyright laws. Licence is granted to use this document and its contents in connection with Kingspan Ltd products only. ©Kingspan Ltd			
DO NOT SCALE. IF IN DOUBT ASK			
New Zealand: Kingspan Ltd 97 Montreal St Christchurch Tel: +64 (3) 260 5530 Fax: +64 (3) 260 5539 Freephone: 0800 121280 email: info@kingspanpanels.co.nz www.kingspanpanels.co.nz			

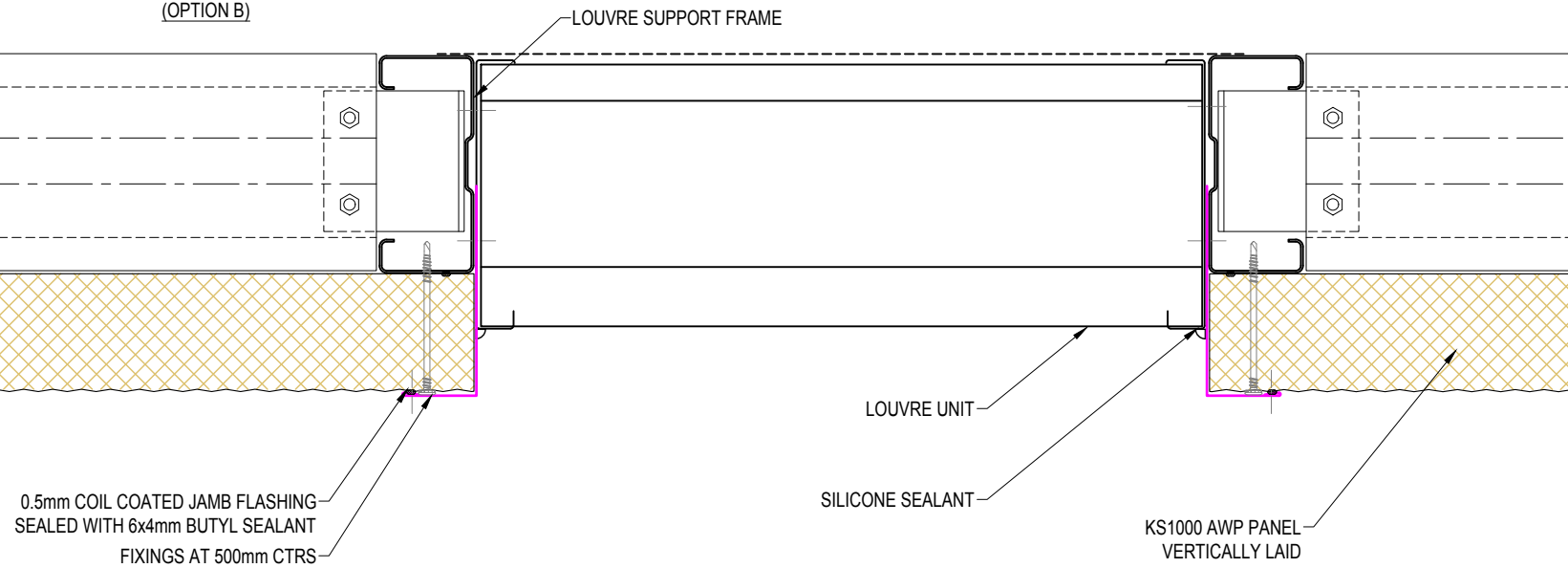
G:\Technical\current\Drawings\current 2015\01\AWP\Wall Vertical\KS1000 AWP Wall Vertical_Std Q3 2015.dwg, AWP_VS_23, 8/12/2015 10:30:02 a.m.

WALL VERTICAL LOUVRE DETAIL (HORIZ. SECTIONS)

(OPTION A)



(OPTION B)



SYSTEM KS1000 AWP WALL VERTICAL_STD Q3 2015			
DESCRIPTION WALL VERTICAL LOUVRE DETAIL (HORIZ. SECTIONS)			
APPROVED BY JS	DATE 22.12.15	REVISION -	
DRG REF: AWP_VS_23	SCALE 1:3	SHEET 1 of 1	PAPER SIZE A4

This document remains the property of Kingspan Ltd under copyright laws. Licence is granted to use this document and its contents in connection with Kingspan Ltd products only.
©Kingspan Ltd

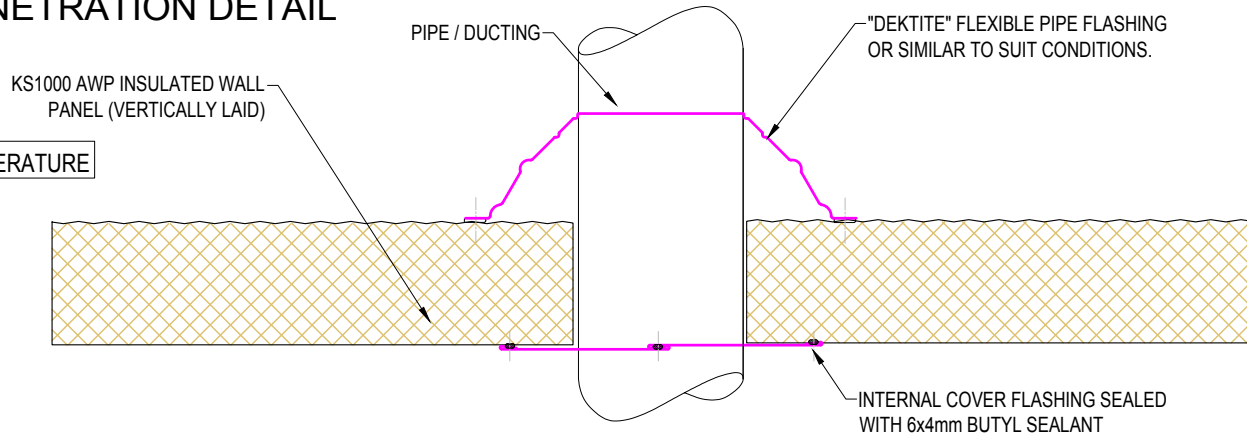
DO NOT SCALE. IF IN DOUBT ASK

New Zealand: Kingspan Ltd
97 Montreal St
Christchurch
Tel: +64 (3) 260 5530
Fax: +64 (3) 260 5539
Freephone: 0800 121280
email: info@kingspanpanels.co.nz
www.kingspanpanels.co.nz

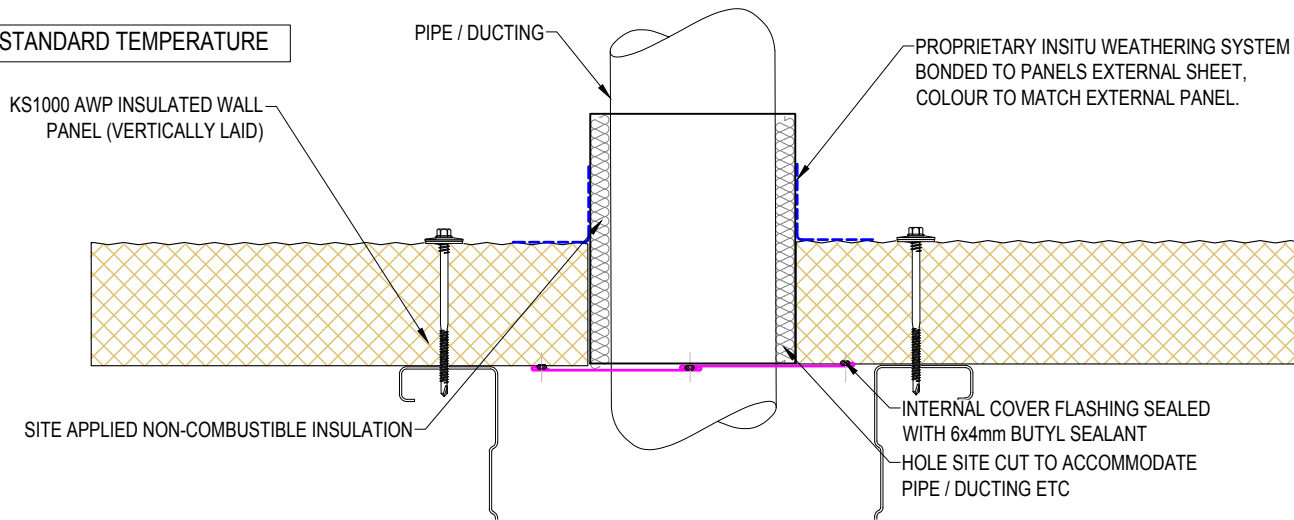


WALL VERTICAL - PENETRATION DETAIL

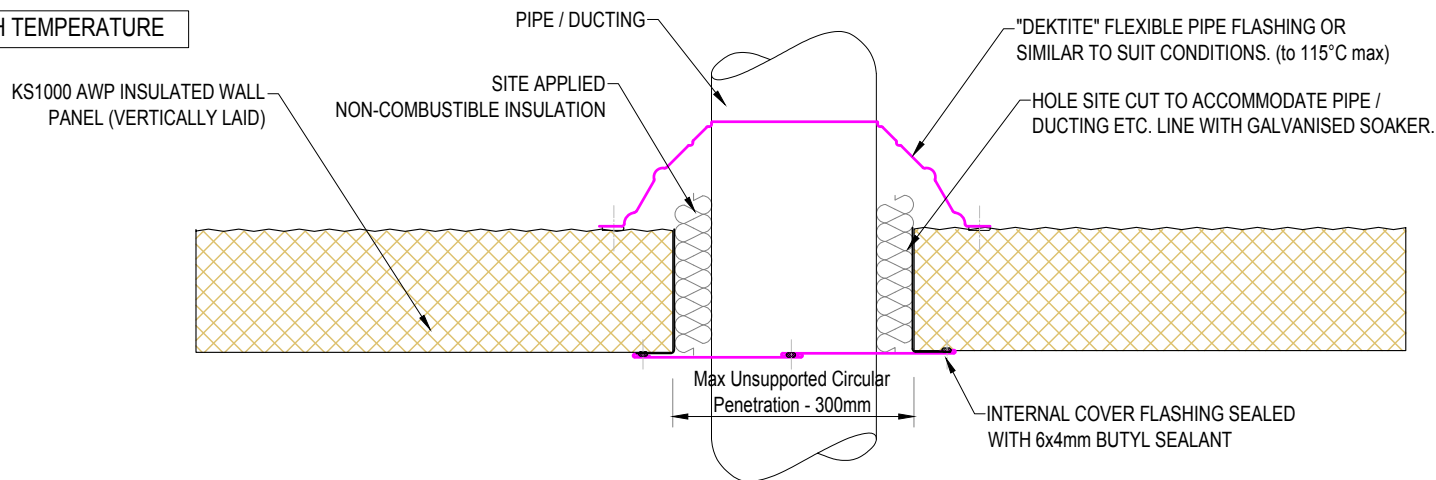
STANDARD TEMPERATURE



ALTERNATIVE STANDARD TEMPERATURE



HIGH TEMPERATURE



NOTE: MAXIMUM CIRCULAR HOLE SIZE TO BE 300MM. PENETRATIONS GREATER WILL REQUIRE ADDITIONAL SUPPORTING STEEL.

FLEXIBLE PIPE FLASHING PROVIDES A COMPLETELY WEATHERPROOF SOLUTION FOR PIPE OPENINGS THROUGH A WALL. THEY CAN BE MOULDED BY HAND TO SUIT THE SHEET PROFILE, BEDDED IN WEATHER SEALANT & FIXED TO THE WALL SHEET.

SYSTEM KS1000 AWP WALL VERTICAL_STD Q3 2015			
DESCRIPTION WALL VERTICAL - PENETRATION DETAIL			
APPROVED BY JS	DATE 22.12.15	REVISION -	
DRG REF: AWP_VS_24	SCALE 1:5	SHEET 1 of 1	PAPER SIZE A4
This document remains the property of Kingspan Ltd under copyright laws. Licence is granted to use this document and its contents in connection with Kingspan Ltd products only. ©Kingspan Ltd			

DO NOT SCALE. IF IN DOUBT ASK

New Zealand: Kingspan Ltd
97 Montreal St
Christchurch
Tel: +64 (3) 260 5530
Fax: +64 (3) 260 5539
Freephone: 0800 121280
email: info@kingspanpanels.co.nz
www.kingspanpanels.co.nz