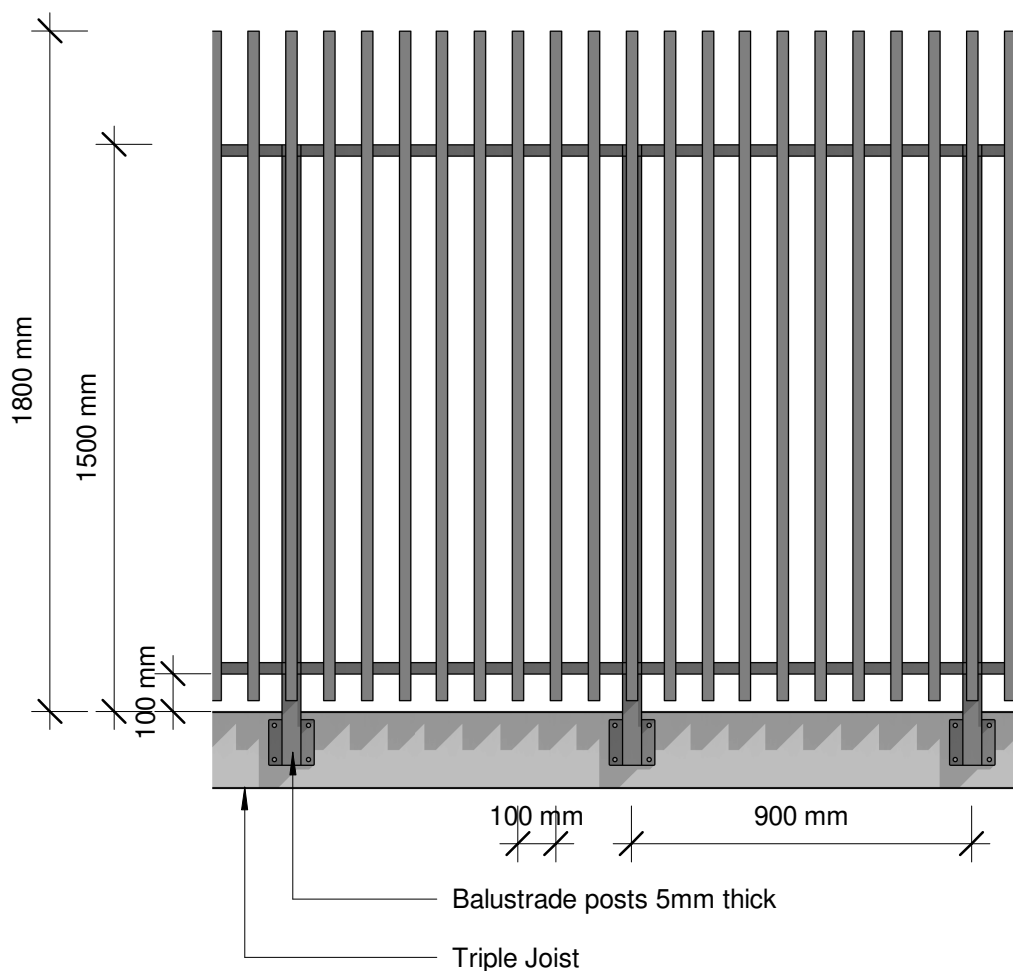


Plan



Elevation

Plot Date: 02 May 2019 11:37

© 2019. The copyright of this document is the property of Glass Vice Limited and shall not be reproduced, copied, loaned or disposed of directly, or indirectly, nor used for any purpose other than that for which it is specifically furnished without prior consent.

All dimensions in millimetres



Vertical Battens

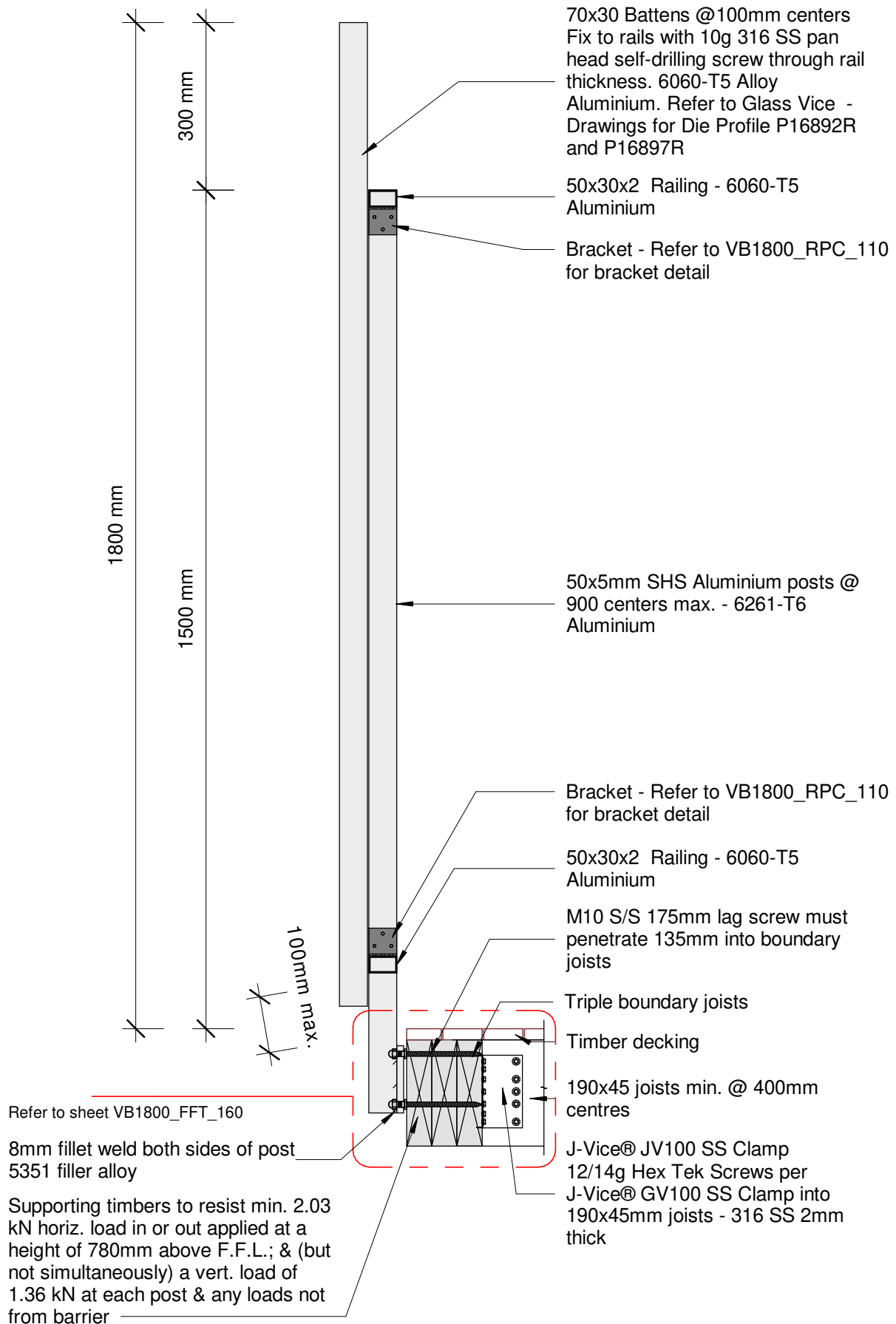
1800mm High Face Fixed

Elevation - Face Fix 1.8M Residential Barrier

Date: 10 April 2019
Scale: 1 : 20
Issue 01

www.glassvice.com
Phone +64 9 414 6565
info@glassvice.com

VB1800_110



Plot Date: 02 May 2019 11:37

© 2019. The copyright of this document is the property of Glass Vice Limited and shall not be reproduced, copied, loaned or disposed of directly, or indirectly, nor used for any purpose other than that for which it is specifically furnished without prior consent.

All dimensions in millimetres



Vertical Battens

1800mm High Face Fixed into Timber

Section - Face Fix 190 Triple Joist 1.8M Residential Barrier

Date: 10 April 2019

Scale: 1 : 10

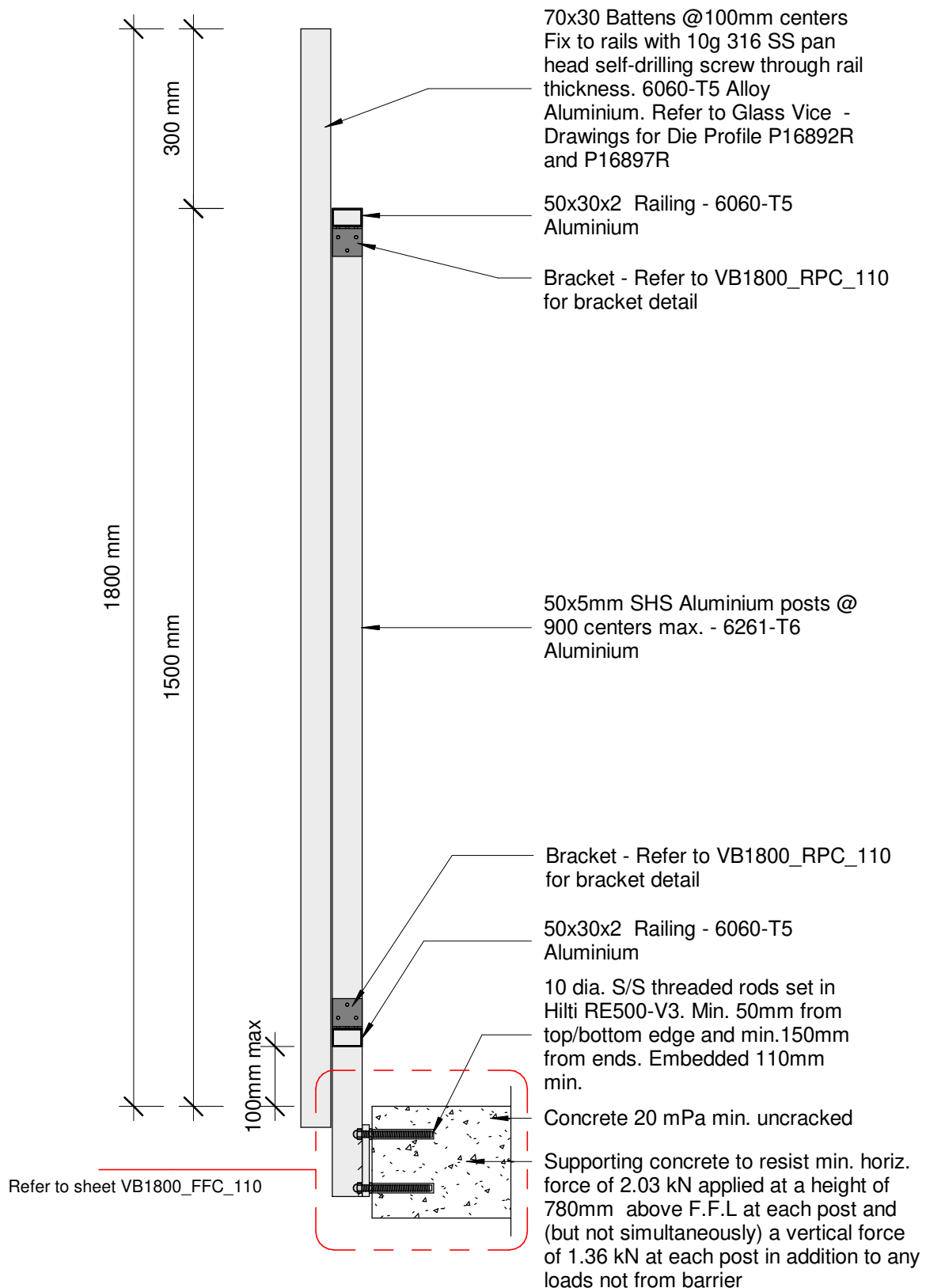
Issue 01

www.glassvice.com

Phone +64 9 414 6565

info@glassvice.com

VB1800_120



Plot Date: 02 May 2019 11:37

© 2019. The copyright of this document is the property of Glass Vice Limited and shall not be reproduced, copied, loaned or disposed of directly, or indirectly, nor used for any purpose other than that for which it is specifically furnished without prior consent.

All dimensions in millimetres

**GLASS
VICE**

Vertical Battens

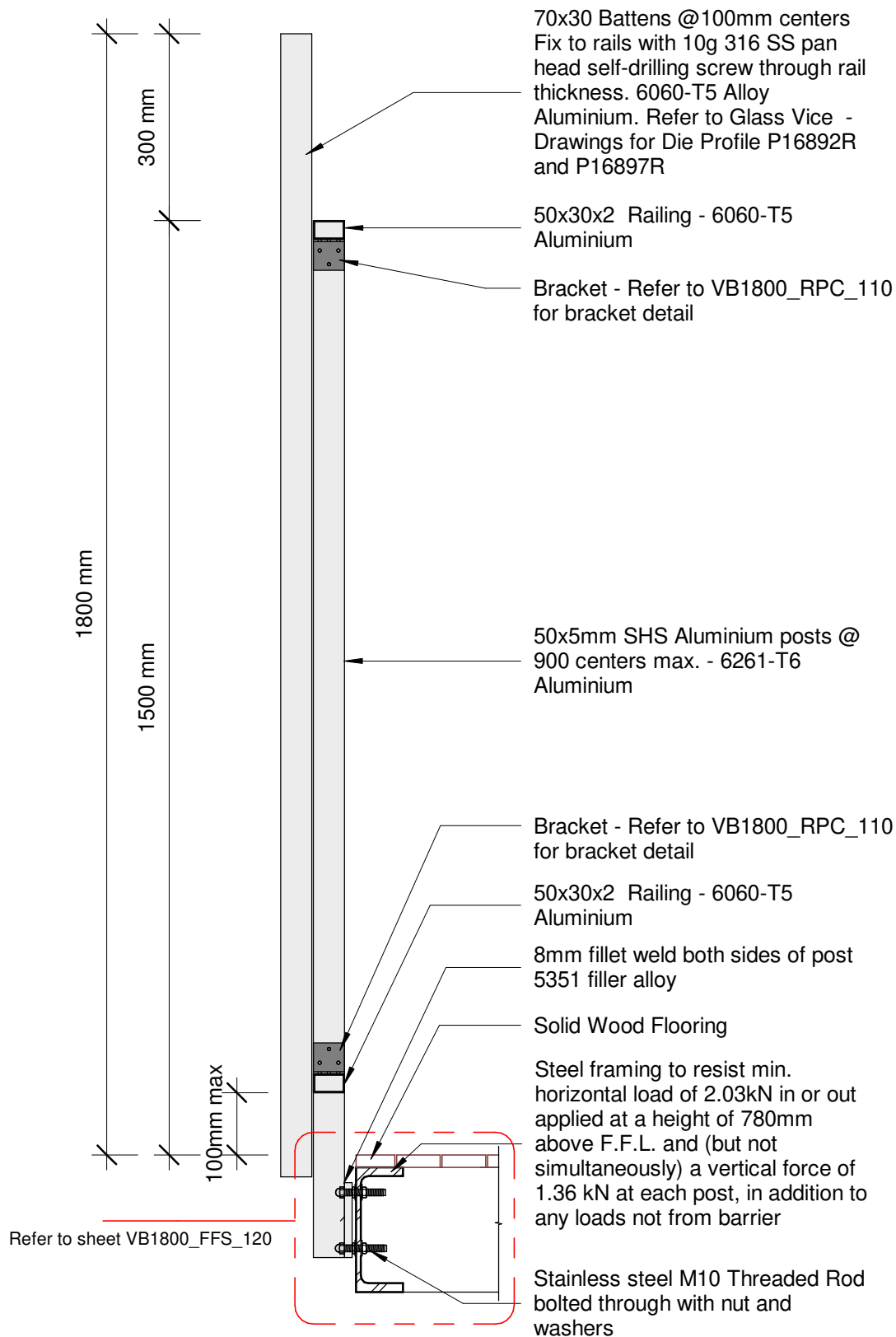
1800mm High Face Fixed into Concrete

Section - Face Fix Concrete 1.8M Residential Barrier

Date: 10 April 2019
Scale: 1 : 10
Issue 01

www.glassvice.com
Phone +64 9 414 6565
info@glassvice.com

VB1800_130



Plot Date: 02 May 2019 11:37

© 2019. The copyright of this document is the property of Glass Vice Limited and shall not be reproduced, copied, loaned or disposed of directly, or indirectly, nor used for any purpose other than that for which it is specifically furnished without prior consent.

All dimensions in millimetres

GLASS
VICE

Vertical Battens

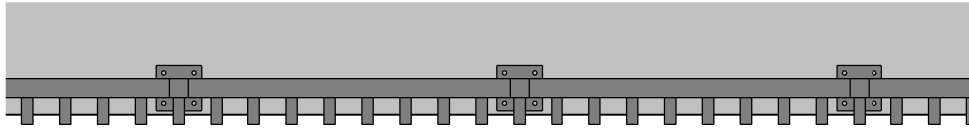
1800mm High Face Fixed into Steel Beam

Section - Face Fix Steel Beam 1.8M Residential Barrier

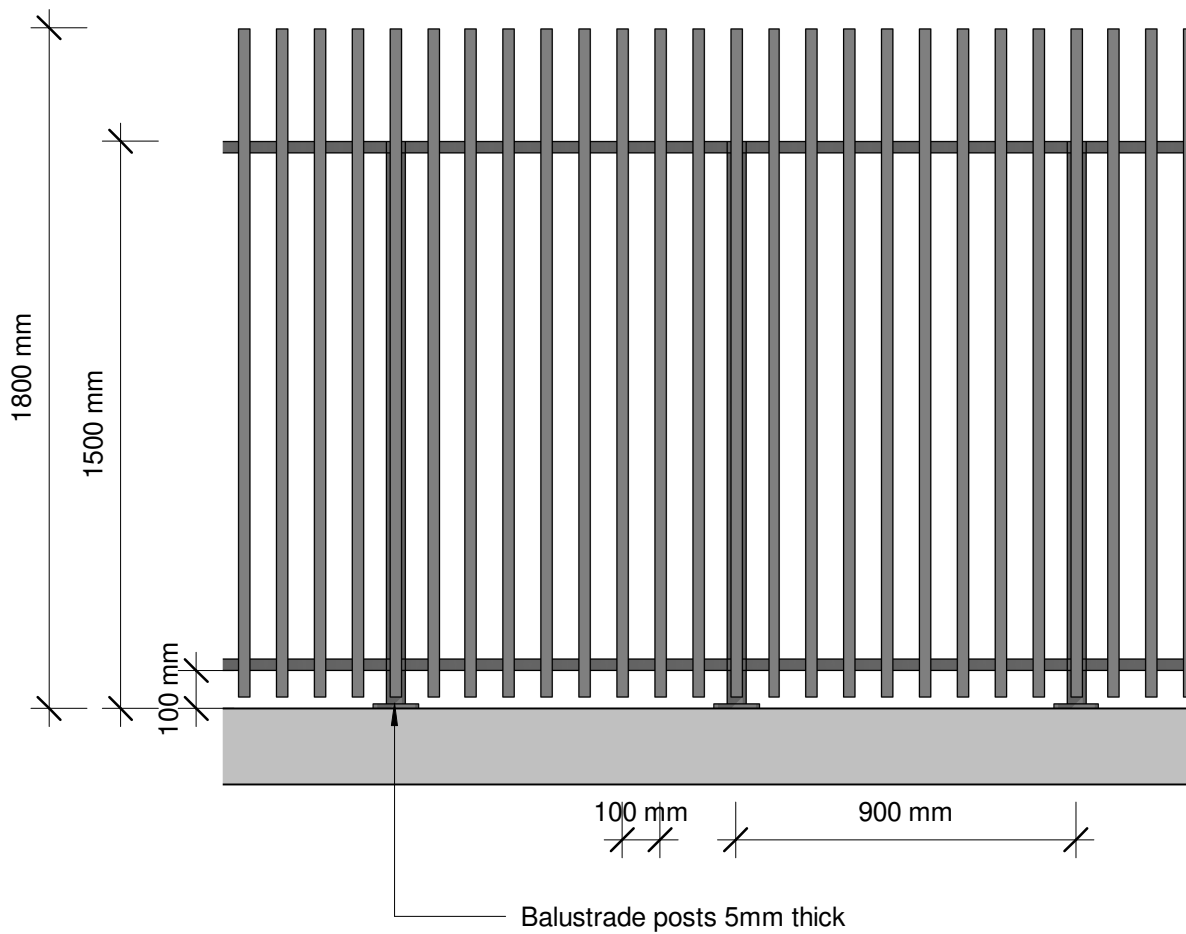
Date: 10 April 2019
Scale: 1 : 10
Issue 01

www.glassvice.com
Phone +64 9 414 6565
info@glassvice.com

VB1800_140



Plan



Elevation

Plot Date: 02 May 2019 11:37

© 2019. The copyright of this document is the property of Glass Vice Limited and shall not be reproduced, copied, loaned or disposed of directly, or indirectly, nor used for any purpose other than that for which it is specifically furnished without prior consent.

All dimensions in millimetres

**GLASS
VICE**

Vertical Battens

1800mm High Top Fixed

Elevation - Top Fix 1.8M Residential Barrier

Date: 10 April 2019

Scale: 1 : 20

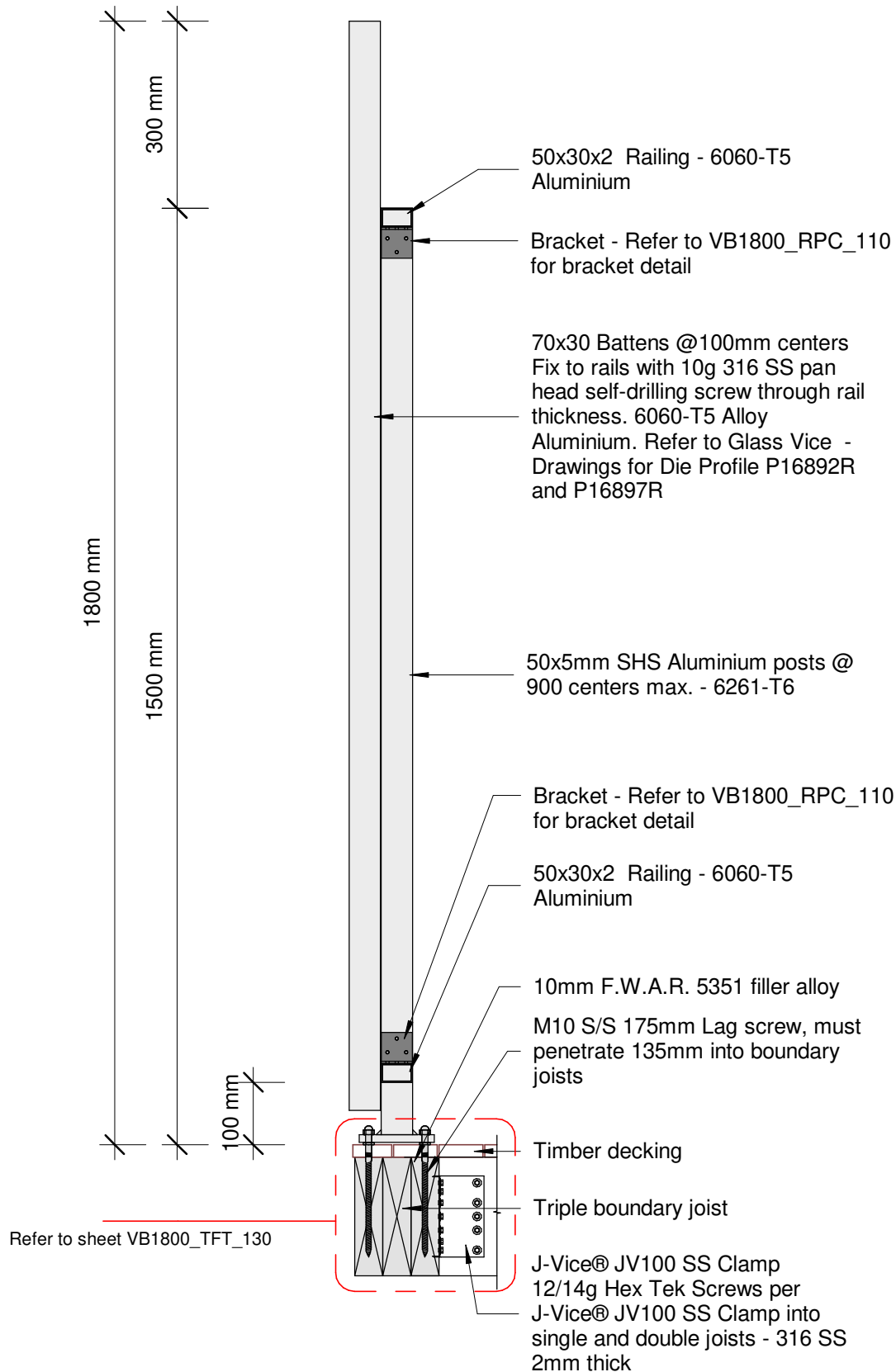
Issue 01

www.glassvice.com

Phone +64 9 414 6565

info@glassvice.com

VB1800_210



Plot Date: 02 May 2019 11:37

© 2019. The copyright of this document is the property of Glass Vice Limited and shall not be reproduced, copied, loaned or disposed of directly, or indirectly, nor used for any purpose other than that for which it is specifically furnished without prior consent.

All dimensions in millimetres



Vertical Battens

1800mm High Top Fixed into Timber

Section - Top Fix 190 Triple Joist 1.8M Residential Barrier

Date: 10 April 2019
Scale: 1 : 10

Issue 01

www.glassvice.com
Phone +64 9 414 6565
info@glassvice.com

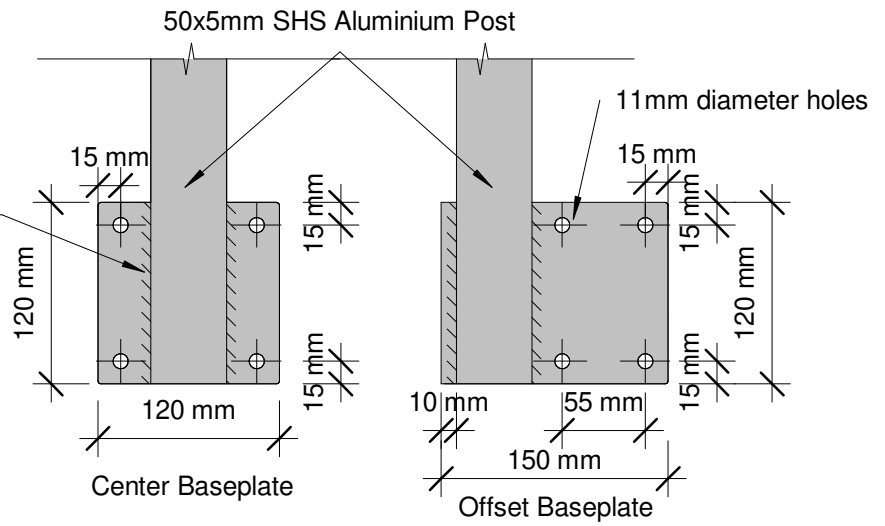
VB1800_220



12mm Baseplate - 5083-H321, H116 Alloy Aluminium 120mm long 8mm fillet weld (leg size, equal) each side of post with 5356 alloy

Note:

Supporting concrete to resist min. horiz. force of 2.03 kN applied at a height of 780mm above F.F.L at each post and (but not simultaneously) a vertical force of 1.36 kN at each post in addition to any loads not from barrier



50x5mm SHS Aluminium posts @ 900 centers max. - 6261-T6 Aluminium

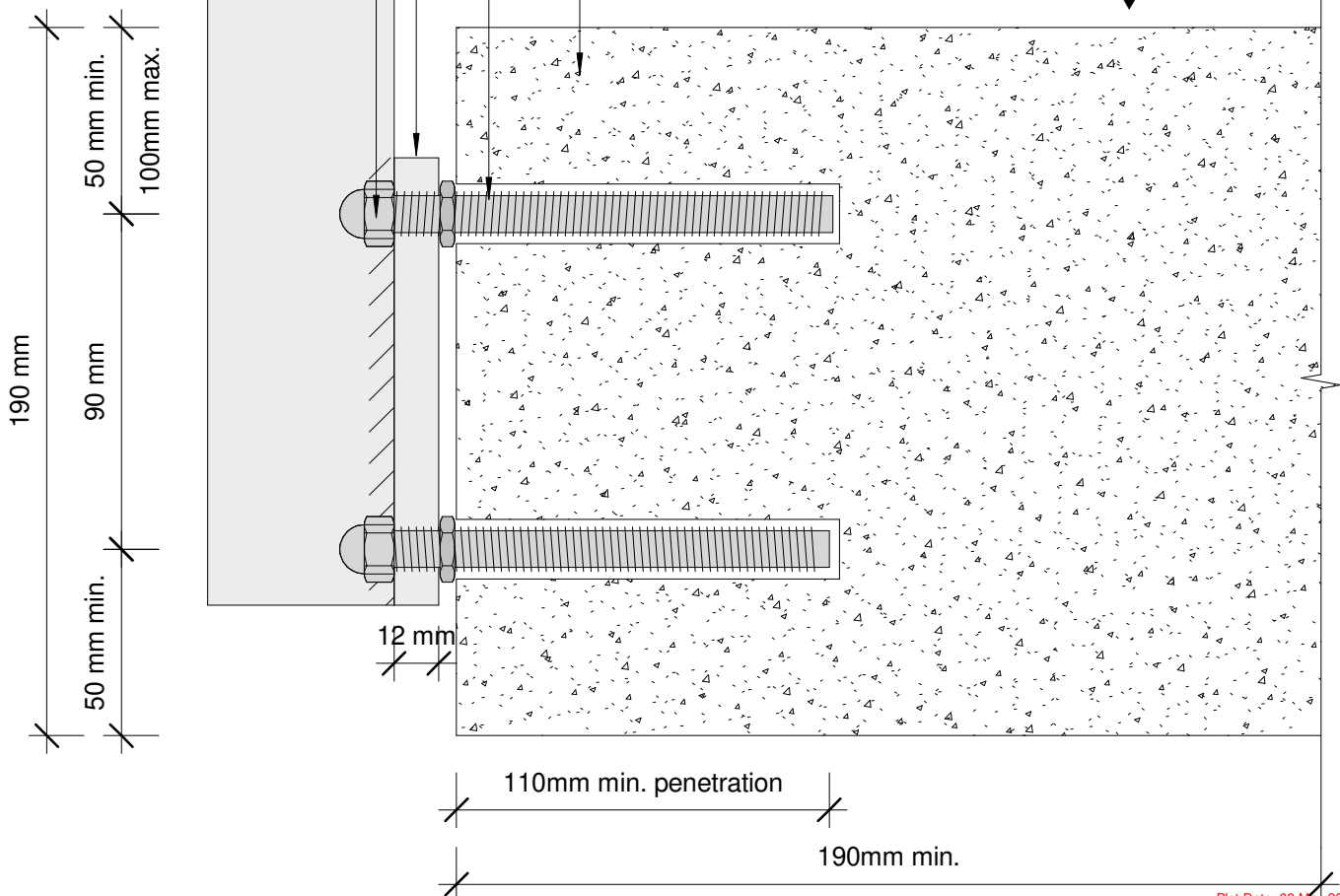
Dome nut SS M10

12mm Baseplate - 5083-H321, H116 Alloy Aluminium 120mm long 8mm fillet weld (leg size, equal) each side of post with 5356 alloy

10 dia. S/S threaded rods set in Hilti RE500-V3. Min. 50mm from top/bottom edge and min. 150mm from ends. Embedded 90mm min.

Concrete 20 mPa min. uncracked

F.F.L



Plot Date: 02 May 2019 11:37

© 2019. The copyright of this document is the property of Glass Vice Limited and shall not be reproduced, copied, loaned or disposed of directly, or indirectly, nor used for any purpose other than that for which it is specifically furnished without prior consent.

All dimensions in millimetres

**GLASS
VICE**

Vertical Battens

1800mm High Face Fixed into Concrete

Detail - Face Fix Concrete 1.8M Residential Barrier

Date: 10 April 2019

Scale: As indicated

Issue 01

www.glassvice.com

Phone +64 9 414 6565

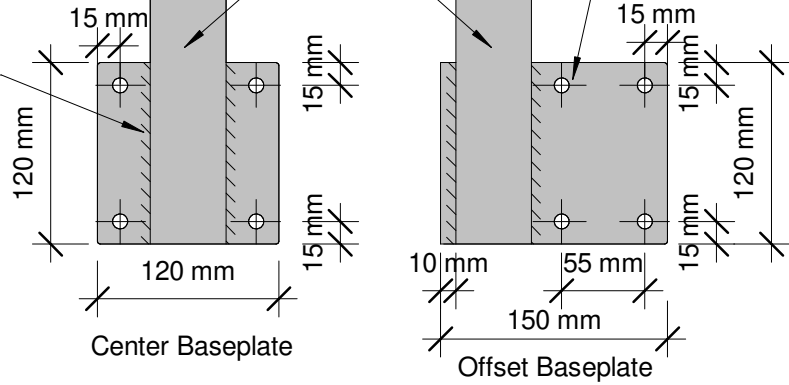
info@glassvice.com

VB1800_FFC_110

12mm Baseplate - 5083-H321,
H116 Alloy Aluminium 120mm long
8mm fillet weld (leg size, equal)
each side of post with 5356 alloy

50x5mm SHS Aluminium Post

11mm diameter holes



50x5mm SHS Aluminium posts @
900 centers max. - 6261-T6
Aluminium

Dome nut SS M10

12mm Baseplate - 5083-H321, H116 Alloy
Aluminium 120mm long 8mm fillet weld (leg size,
equal) each side of post with 5356 alloy

M10 S/S 175mm lag screw must
penetrate 135mm into boundary
joists. 50mm from any timber
member end

Timber decking

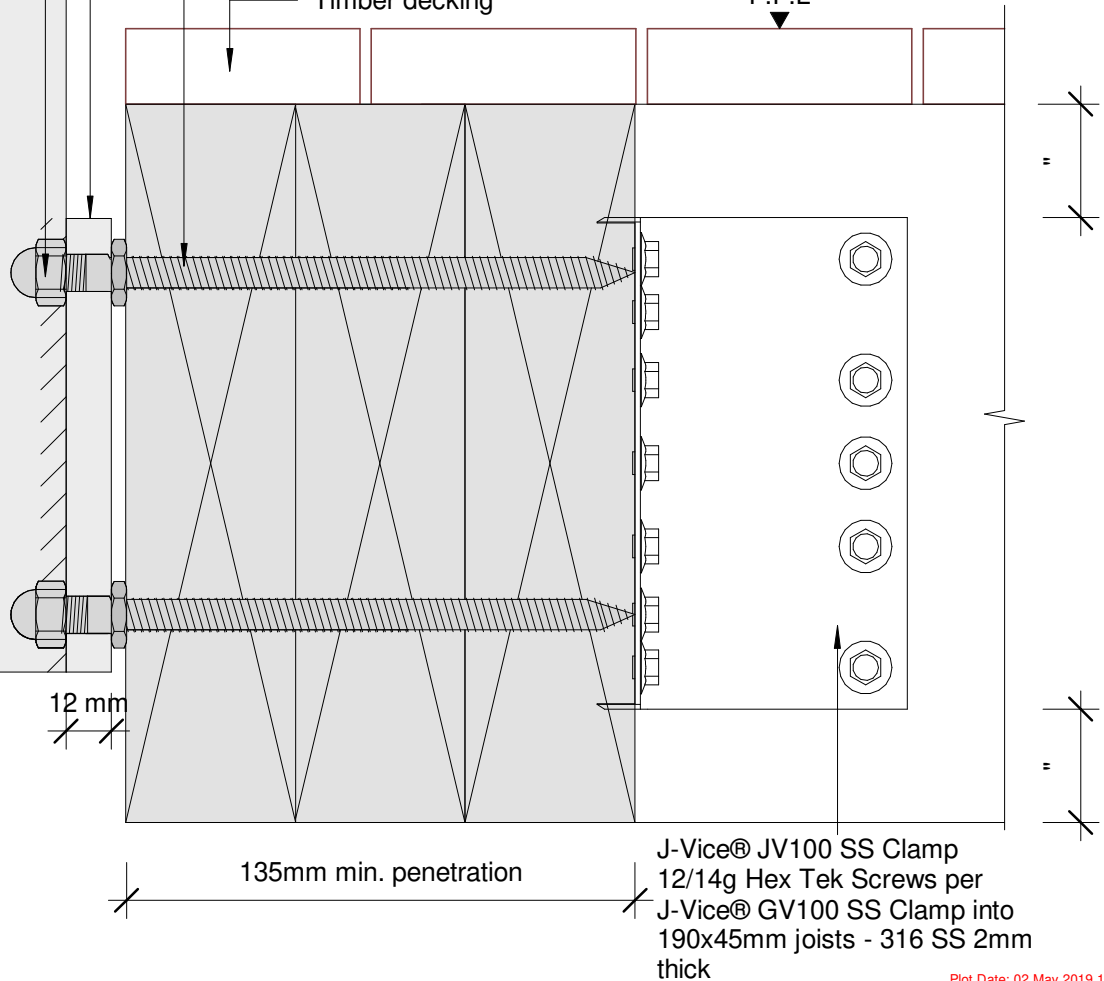
F.F.L

100mm max. from F.F.L.
to first fastener

25mm min.

90 mm

25mm min.



Plot Date: 02 May 2019 11:37

© 2019. The copyright of this document is the property of Glass Vice Limited and shall not be reproduced, copied, loaned or disposed of directly, or indirectly, nor used for any purpose other than that for which it is specifically furnished without prior consent.

All dimensions in millimetres

GLASS
VICE®

Vertical Battens

1800mm High Face Fixed into Timber

Detail - Face Fix 190 Triple Joist 1.8M Residential Barrier

Date: 10 April 2019

Scale: As indicated

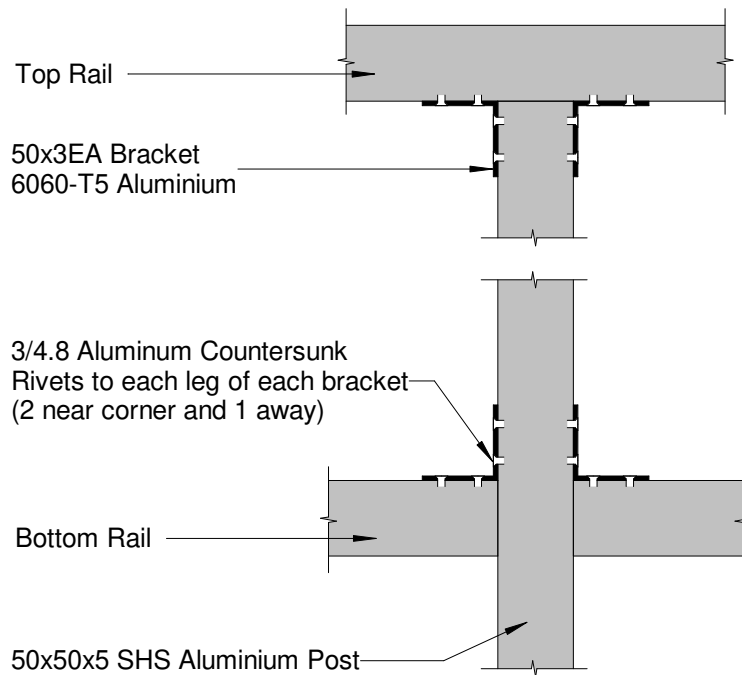
Issue 01

www.glassvice.com

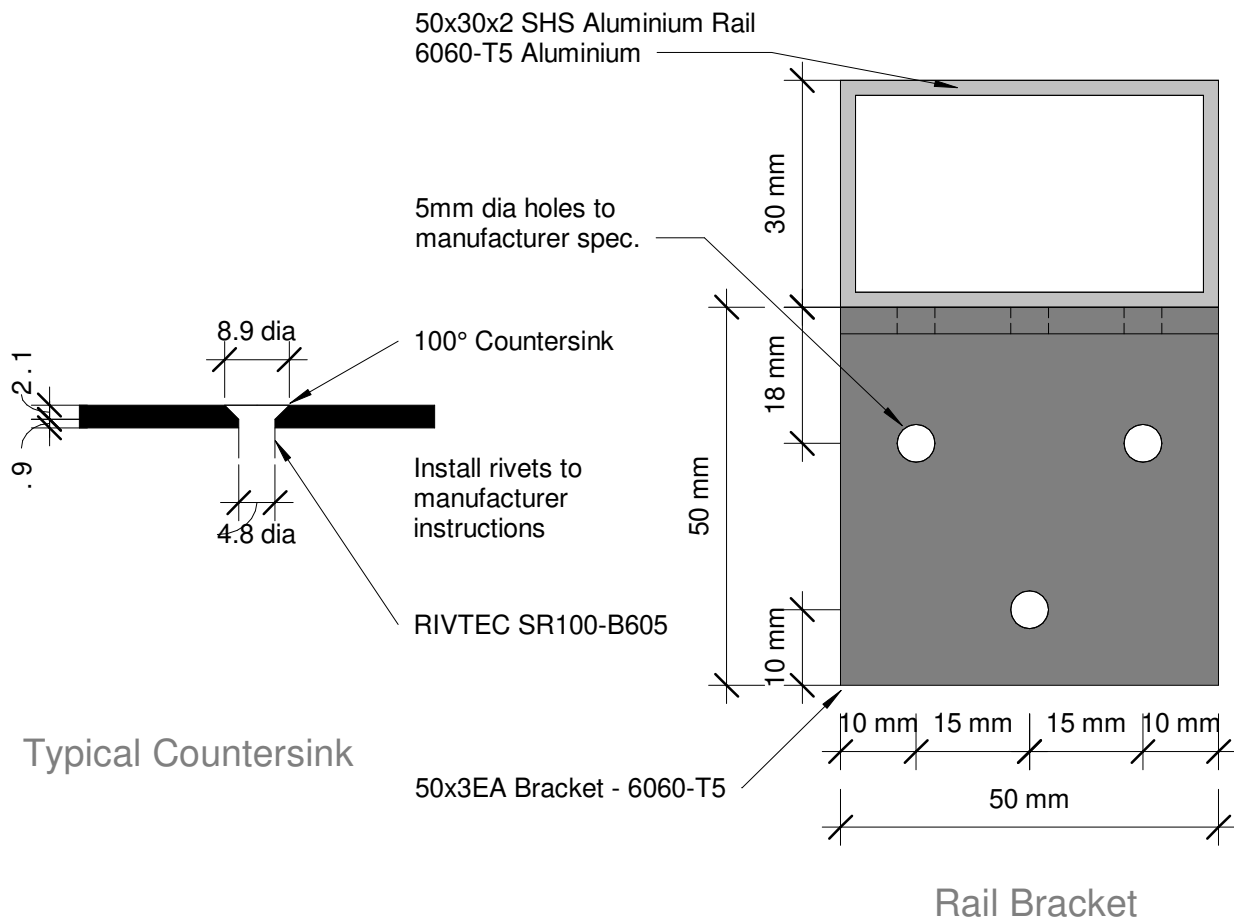
Phone +64 9 414 6565

info@glassvice.com

VB1800_FFT_160



Rail - Post Connection



Plot Date: 02 May 2019 11:37

© 2019. The copyright of this document is the property of Glass Vice Limited and shall not be reproduced, copied, loaned or disposed of directly, or indirectly, nor used for any purpose other than that for which it is specifically furnished without prior consent.

All dimensions in millimetres

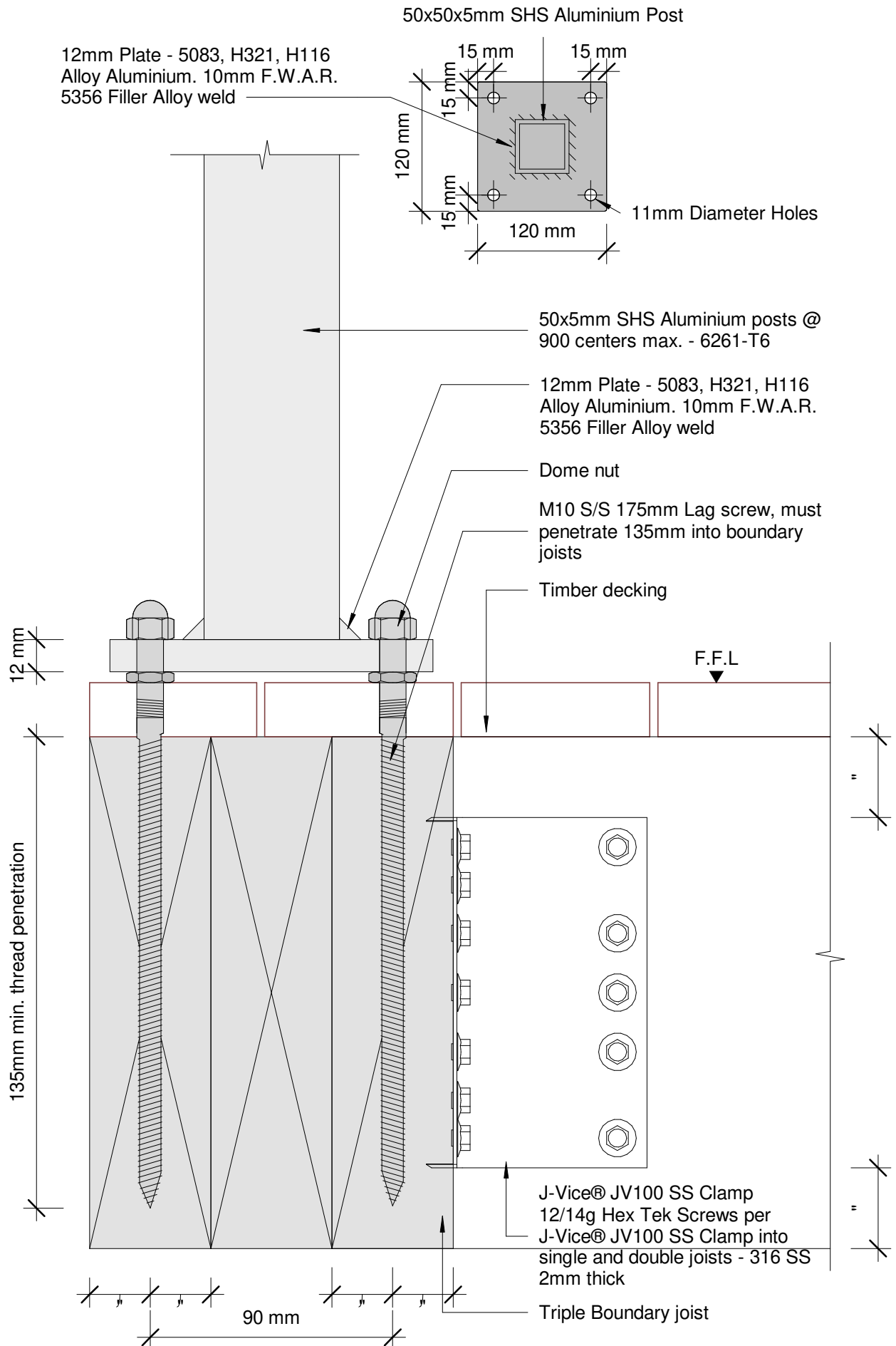
GLASS
VICE

Vertical Battens
Top/Side Fix 1800mm
Detail - Rail - Post Connection

Date: 10 April 2019
Scale: As indicated
Issue 01

www.glassvice.com
Phone +64 9 414 6565
info@glassvice.com

VB1800_RPC_110



Plot Date: 02 May 2019 11:37

© 2019. The copyright of this document is the property of Glass Vice Limited and shall not be reproduced, copied, loaned or disposed of directly, or indirectly, nor used for any purpose other than that for which it is specifically furnished without prior consent.

All dimensions in millimetres

GLASS
VICE®

Vertical Battens

1800mm High Top Fixed into Timber

Detail - Top Fix 190 Triple Joist 1.8M Residential Barrier

Date: 10 April 2019

Scale: As indicated

Issue 01

www.glassvice.com

Phone +64 9 414 6565

info@glassvice.com

VB1800_TFT_130