

# PINECLAD AND PINETRIM XT

## Horizontal Weatherboard External Cladding System

### PURPOSE

Hume Pine (NZ) Ltd supplies Pineclad and Pinetrim XT Horizontal Weatherboard External Cladding systems for use as an external cladding.

### EXPLANATION

The Pineclad and Pinetrim XT Horizontal Weatherboard External Cladding systems (the systems) comprise timber weatherboards, fascia boards, and moulding profiles manufactured from finger-jointed, glued laminated, clear radiata pine.

#### ➤ Pineclad

- is manufactured in New Zealand from locally sourced timber
- is treated to hazard class H3.1 with a light organic solvent preservative (LOSP)
- components are primed with an oil-based factory applied primer ready for undercoating and top coating with a high-grade acrylic, two-coat system on site.

#### ➤ Pinetrim XT

- is manufactured in China from timber sourced from other countries including New Zealand
- is treated to hazard class H3.1 with LOSP
- components are pre-sanded and painted with an acrylic primer and undercoat system ready for top coating with a high-grade acrylic, two-coat system.

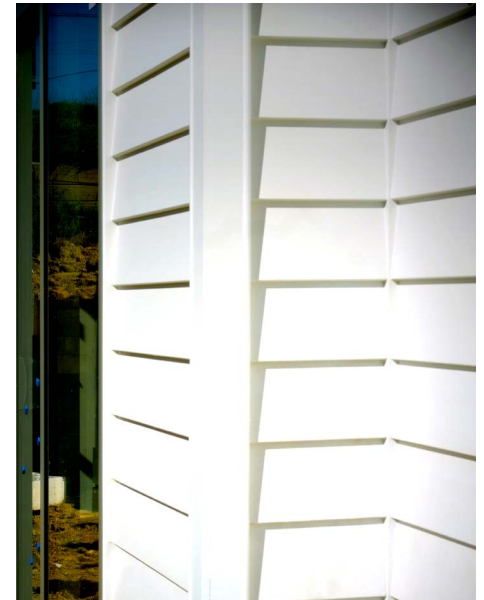
The following components are available:

#### ➤ 18 mm thick weatherboards, in the following widths and profiles:

	135 mm	142 mm	180 mm	187 mm
Rusticated	✓		✓	
Bevel back	✓	✓	✓	✓
Rebated Bevel back	✓			
Shiplap	✓		✓	
Bevel Rustic	✓			

- 18 mm and 29 mm thick fascia boards, in widths of 135 mm, 180 mm and 280 mm
- moulding profiles of Bevelled Cornice, Quad, Scotia, Scriber, D4S, D4S Eaves mould, Weather Grooved Boxed Corners, Sill, and Rustic Plug.

*Pinetrim*™<sup>XT</sup> *Pineclad*



For further assistance please contact:

- ☎ 0508 111 000
- ✉ sales@humpine.nz
- 🌐 [www.humpine.nz](http://www.humpine.nz)



### SCOPE AND LIMITATIONS OF USE

Scope	Limitations
<b>Location</b> In wind zones up to extra high as defined in NZS 3604:2011 or up to a design wind pressure (ULS) of 2.5 kPa. In all exposure zones as defined in NZS 3604:2011. Any proximity to a relevant boundary.	➤ All fixings to comply with E2/AS1 (table 20 and 24) and Section 4, NZS 3604:2011. ➤ For use in microclimatic considerations (s4.2.4, NZS 3604:2011) refer to Hume Pine. ➤ Where located within 1 m of a relevant or notional boundary, it must be subject to specific fire engineering.
<b>Building</b> On timber or lightweight steel framing In conjunction with a primary structure that complies with the NZ Building Code or where the designer and/or installer have established that the existing building is suitable for the intended building work. As an external cladding on all buildings.	➤ A thermal break is required where the system is used in conjunction with steel framing. ➤ On buildings up to 10 m in building height. ➤ On buildings with a risk score of less than 20, when evaluated against the E2/AS1 risk matrix. ➤ Direct fixed or fixed over a drained and ventilated cavity in accordance with table 3, E2/AS1. ➤ In conjunction with a flexible building wrap or rigid air barrier depending on location wind zone and, as a minimum, in accordance with E2/AS1. ➤ With aluminium joinery that meets NZS 4211:2008 or has a current product certificate (CodeMark) or with traditional timber joinery as set out in BRANZ bulletin BU481.

### USEFUL INFORMATION

For information on the design, installation and maintenance of the Pineclad and Pinetrim XT Horizontal Weatherboard External Cladding systems and for our warranty refer to [www.humpine.nz](http://www.humpine.nz).

### OTHER CERTIFICATIONS AND APPROVALS HELD BY HUME PINE (NZ) LTD

- Rainforest Alliance certified FSC C021533.


### VERSION:

## CONDITIONS OF USE

Installation must be completed by a competent person with access to all relevant technical documentation.

## PERFORMANCE CLAIMS

If designed, installed and maintained in accordance with all Hume Pine (NZ) Ltd requirements, the Pineclad and Pinetrim XT Horizontal Weatherboard External Cladding systems will comply with or contribute to compliance with the following performance claims:

NZ Building Code clauses	Compliance statement	BASIS OF COMPLIANCE <sup>1</sup> Demonstrated by
<b>B1 Structure</b> B1.3.1 B1.3.2, B1.3.3 (a, f, h, j, m, q) B1.3.4 (b, c, d, e)		Building Act 2004 s19 How compliance with the building code is established (1) A building consent authority must accept .... the following as establishing compliance with the building code: (d) A current product certificate issued under section 269, if every relevant condition in that product certificate is met
<b>B2 Durability</b> B2.3.1 (b)		
<b>F2 Hazardous Building Materials</b> F2.3.1		

1. The Compliance Statement is the pass holder's statement that they have met their obligations under s14G(2) of the Building Act 2004.

## BASIS OF CERTIFICATION

### Pineclad

- Jowat. [April 2012]. *1-component PUR prepolymer Data Sheet*.
- Dulux. [September 2011]. *839-Line Machine Primers Safety Data Sheet*.
- Hume Pine (NZ) Ltd. [October 2010]. *Tanalised® Azure Limited Structural Guarantee*.
- Lonza. [December 2008]. *Vascol Azure Treated timber Material Safety Data Sheet*.

### Pinetrim XT.

- Dorus. [January 2010]. *SL 3503 Material Safety Data Sheet according to 91/155/EEC – ISO 11014-1*.
- Timber Treatment Plant Registration Authority. [June 2017]. *Certificate of Registration of Preservative Treatment & Allocated Brand*.
- Merry Garden Holdings Ltd. [n.d.]. *Introduction of LOSP H3 treated pine program*.
- AkzoNobel. [May 2017]. *Safety Data Sheet WB Opaque Vacuum Gray Primer(EB)*.
- Merry Garden Holdings Ltd. [May 2018]. *H3.1 LOSP Treated & Primed Timber Limited Warranty*.

2. Sources of information also include the Building Act 2004 and its regulations, including the Building Code (Schedule 1 of the Building Regulations 1992), Acceptable Solutions and Verification Methods, and relevant cited standards.

- Independent Verification Services Labs. *Analysis report*.

### QUALITY

- Global-Mark. *Audit of Pine Trim XT manufacturing facilities*.
- Global-Mark. *Review and Audit of Hume Pine NZ Ltd Quality Plan and associated manufacturing*.

### BUILDABILITY

- Global-Mark NZ Site Audits.

Scan or click this QR code for a full download of Compliance Documentation for this pass™.  
[www.humepine.co.nz/downloads/certification-and-latest-test-results](http://www.humepine.co.nz/downloads/certification-and-latest-test-results)



**VERSION:**

**DATE:**

Note: Uncontrolled in printed format.

**NAME:**

Paul Muggleton

**POSITION:**

National Sales Manager

Signed on behalf of Hume Pine (NZ) Ltd:

By signing this pass™ the signatory confirms that, in respect of the subject of this pass™, the company has met their s14G obligations under the Building Act 2004.



**Hume Pine (NZ) Ltd, 210 Te Ngae Road, Rotorua > sales@humepine.nz > 0508 111 000 > www.humepine.nz**

This Product Assurance Supplier Statement (pass™) has been prepared by TBB in accordance with MBIE PTS guidelines and the recommendations of s9.2, Determination No. 2019-011 (issued 12 April 2019). TBB is ISO9001:2016 certified. Copyright © 2017, The Building Business Limited (TBB). All rights reserved.