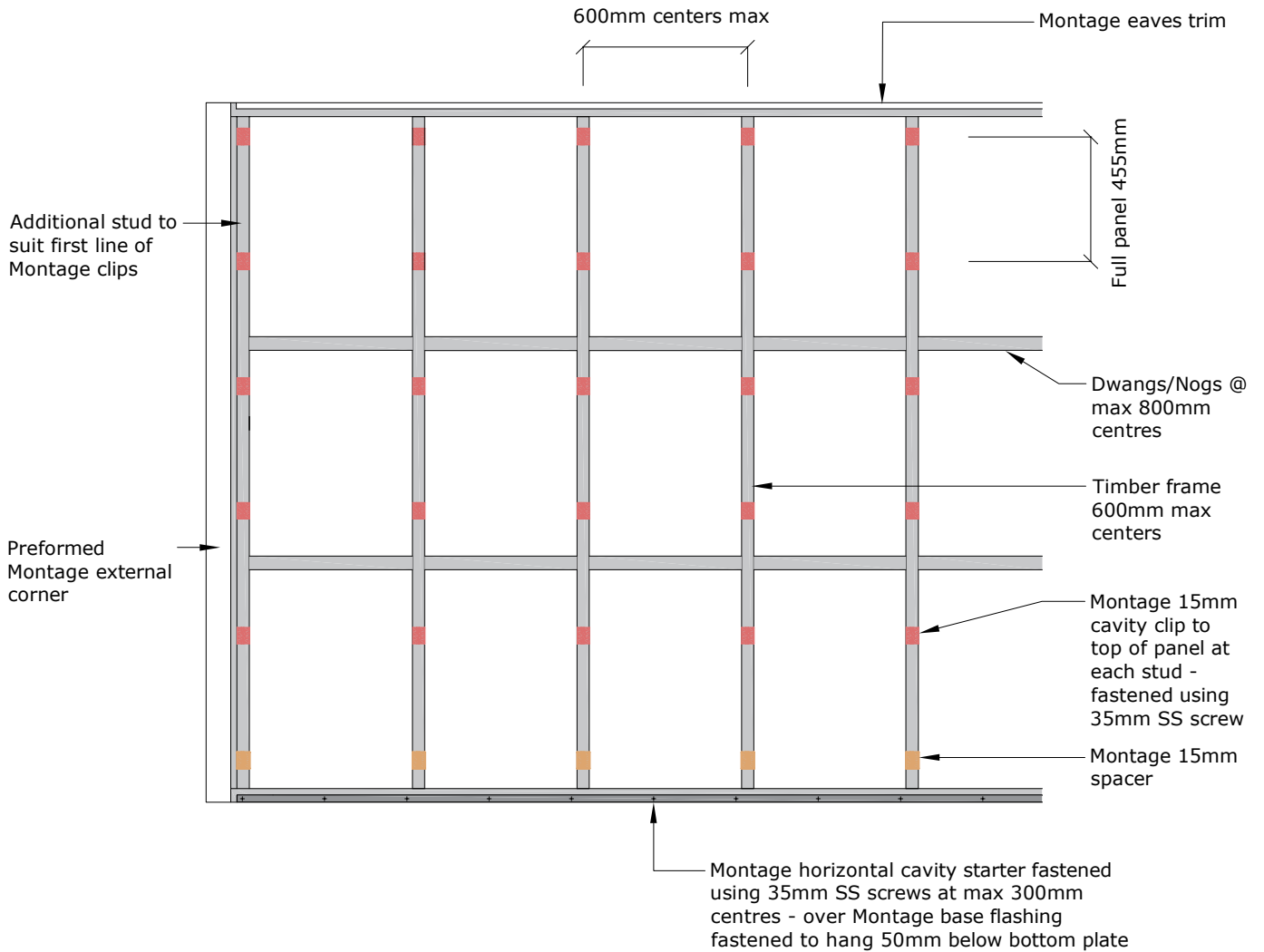




Fibre Cement



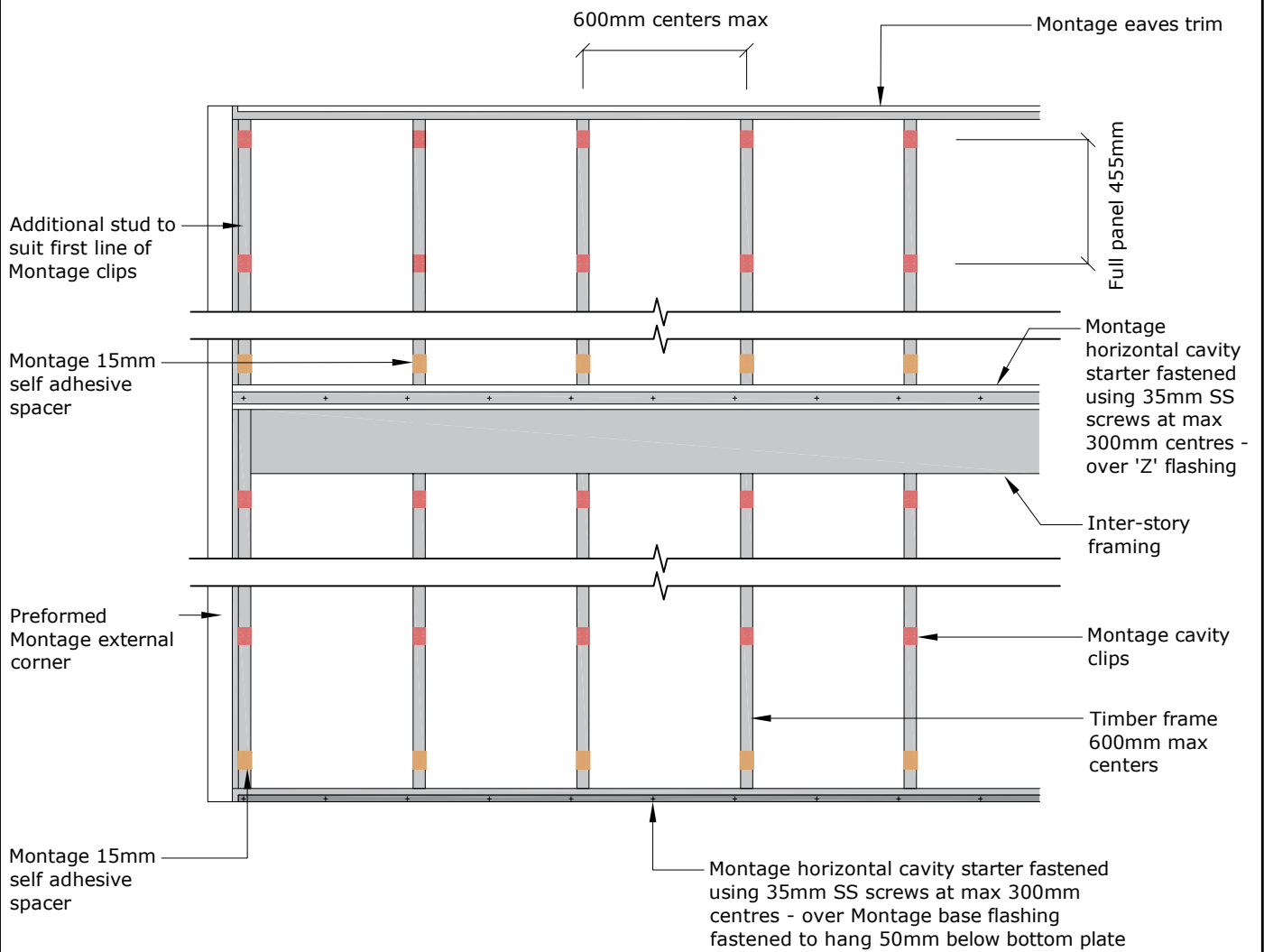
Note: Double stud required at each vertical control joint

PROFILE **BGC Montage™**
 DETAIL **Wall Layout
 Horizontal Installation**

DATE **Mar 2022**
 SCALE **1:25 @ A4**
 DETAIL NO. **EH-3**



Fibre Cement



Note: Control joint required at each floor level

PROFILE **BGC Montage™**

DETAIL **2 Story Wall Layout
Horizontal Installation**

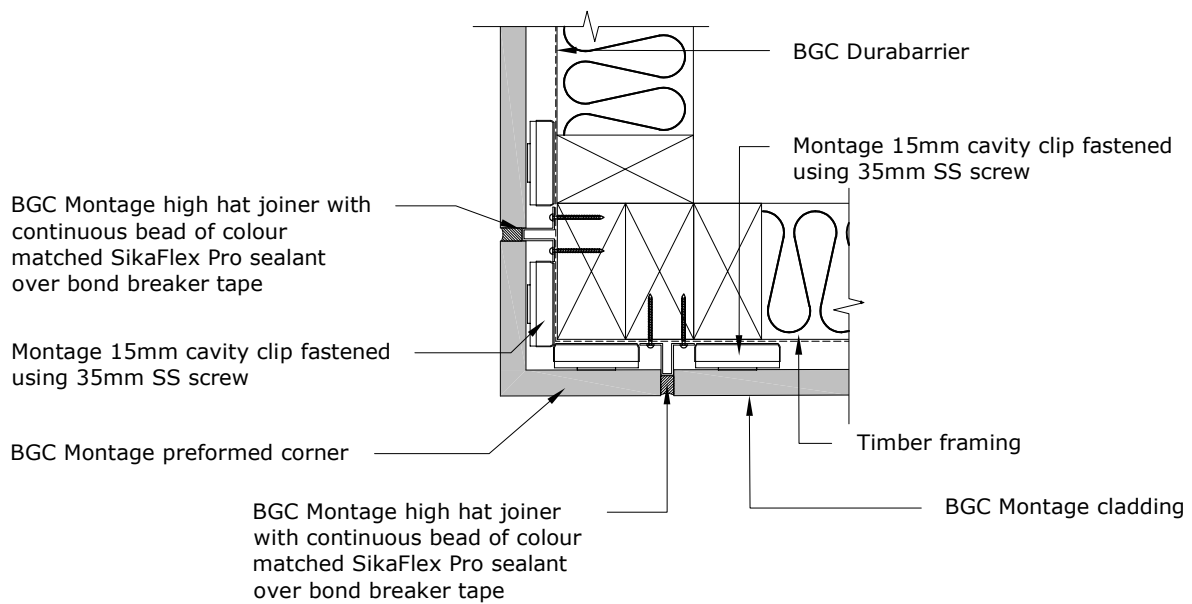
DATE **Mar 2022**

SCALE **1:25 @ A4**

DETAIL NO. **EH-3a**



Fibre Cement



All Montage cut edges to be sealed using Montage K primer and color matched Montage touch up paint as required

PROFILE **BGC Montage™**

DATE Mar 2022

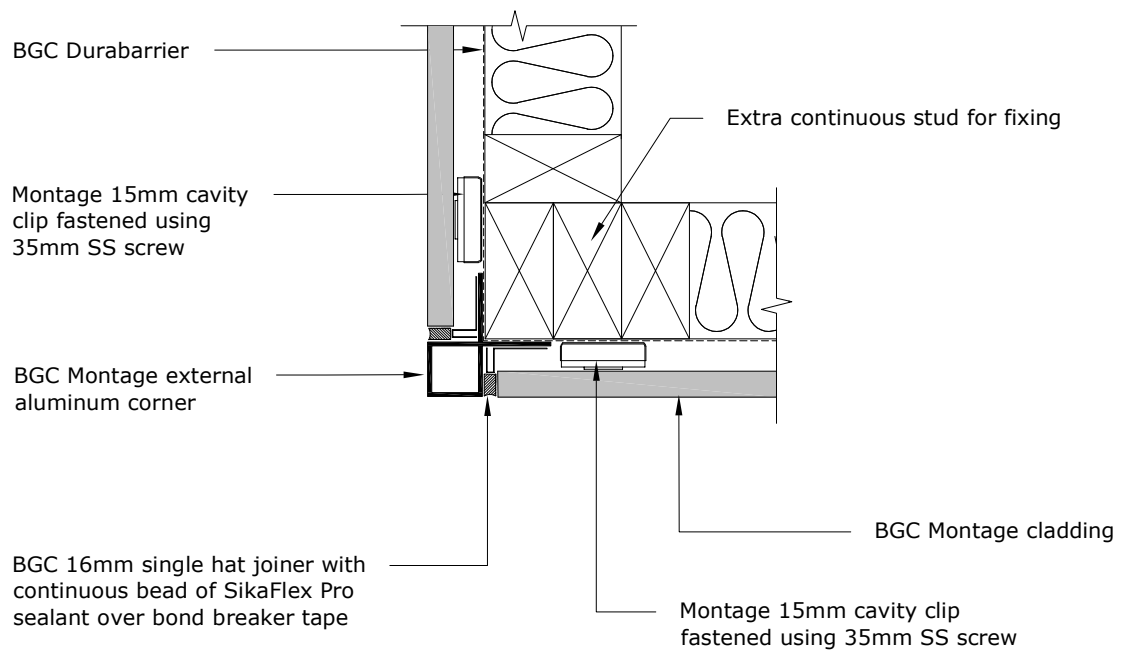
DETAIL **External Corner Detail - Preformed Corner Horizontal Installation**

SCALE 1:5 @ A4

DETAIL NO. **EH-4**



Fibre Cement



All Montage cut edges to be sealed using Montage K primer and color matched Montage touch up paint as required

PROFILE **BGC Montage™**

DATE Mar 2022

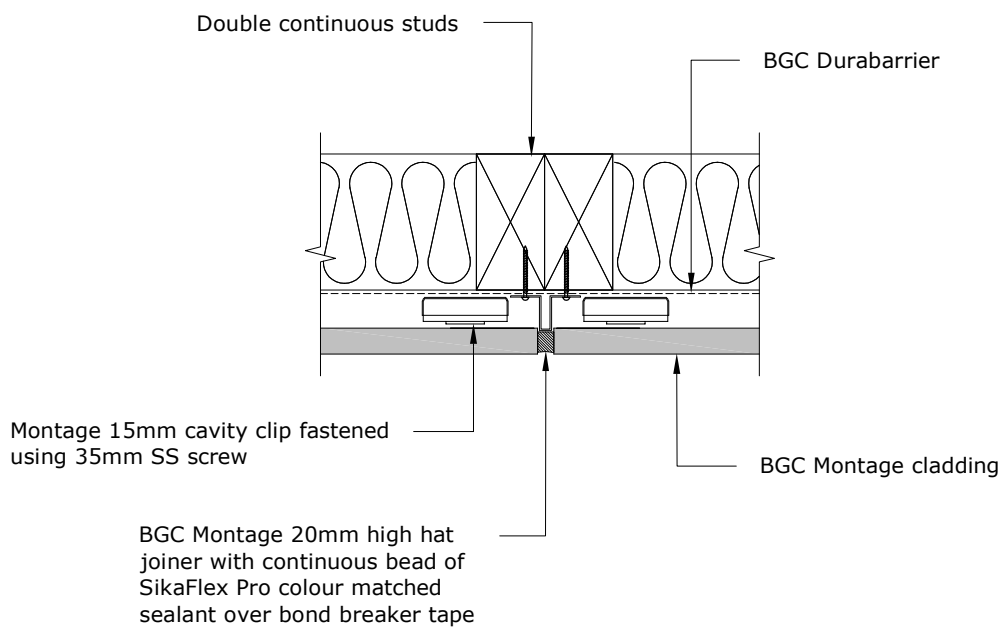
DETAIL **External Corner Detail - Aluminum Corner
Horizontal Installation**

SCALE 1:5 @ A4

DETAIL NO. **EH-4a**



Fibre Cement



All Montage cut edges to be sealed using Montage K primer and color matched Montage touch up paint as required

PROFILE **BGC Montage™**

DATE **Mar 2022**

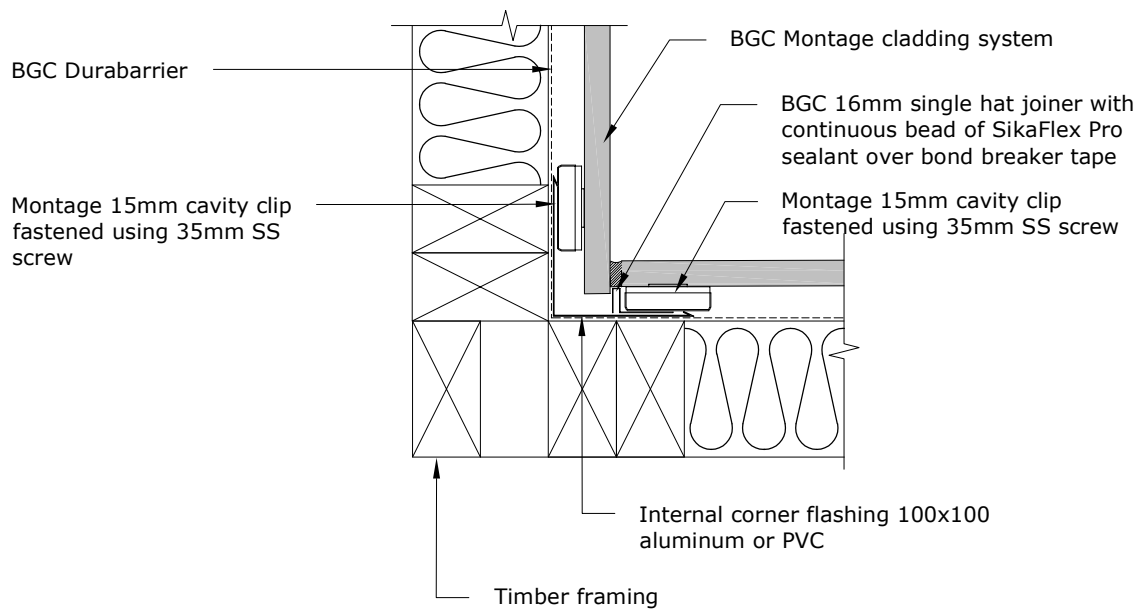
DETAIL **Vertical Control Joint Detail
Horizontal Installation**

SCALE **1:5 @ A4**

DETAIL NO. **EH-5**



Fibre Cement



All Montage cut edges to be sealed using Montage K primer and color matched Montage touch up paint as required

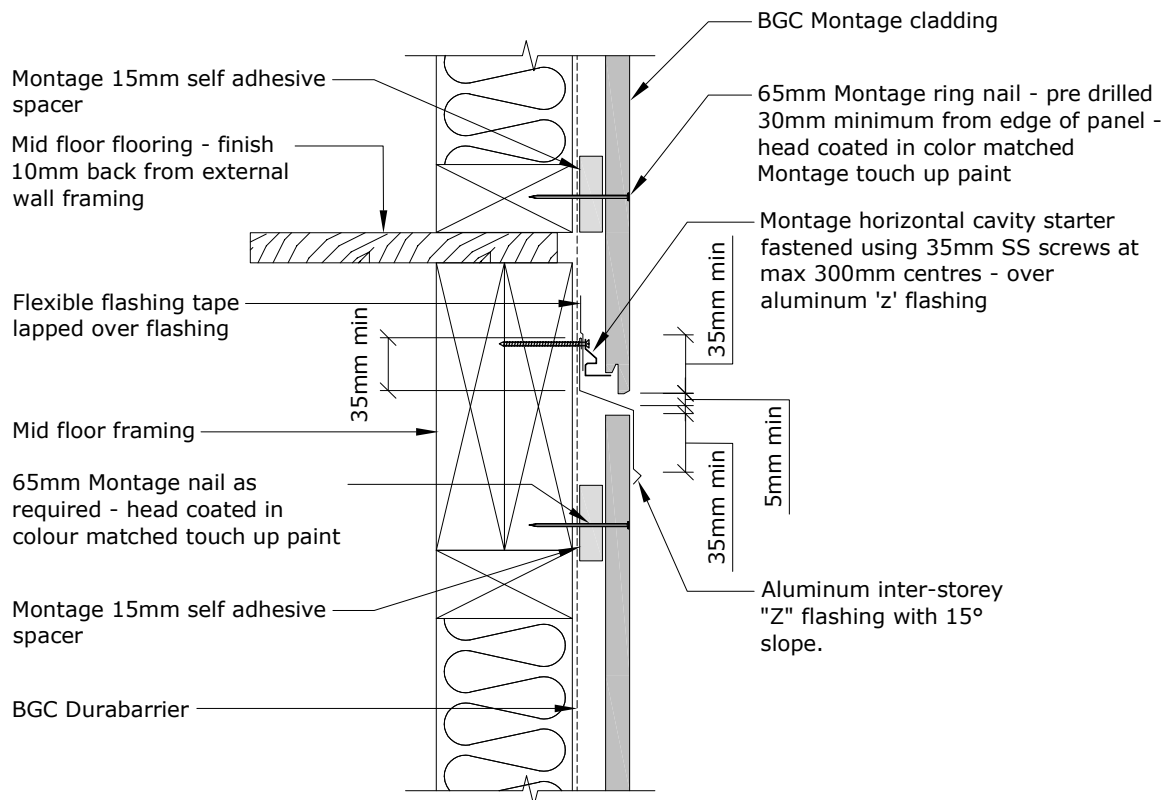
PROFILE **BGC Montage™**

DATE **Mar 2022**

DETAIL **Internal Corner Detail
Horizontal Installation**

SCALE **1:5 @ A4**

DETAIL NO. **EH-6**

BGC**Fibre Cement**

Note: Control joint required at each floor level

All Montage cut edges to be sealed using Montage K primer and color matched Montage touch up paint as required

PROFILE **BGC Montage™**

DATE Mar 2022

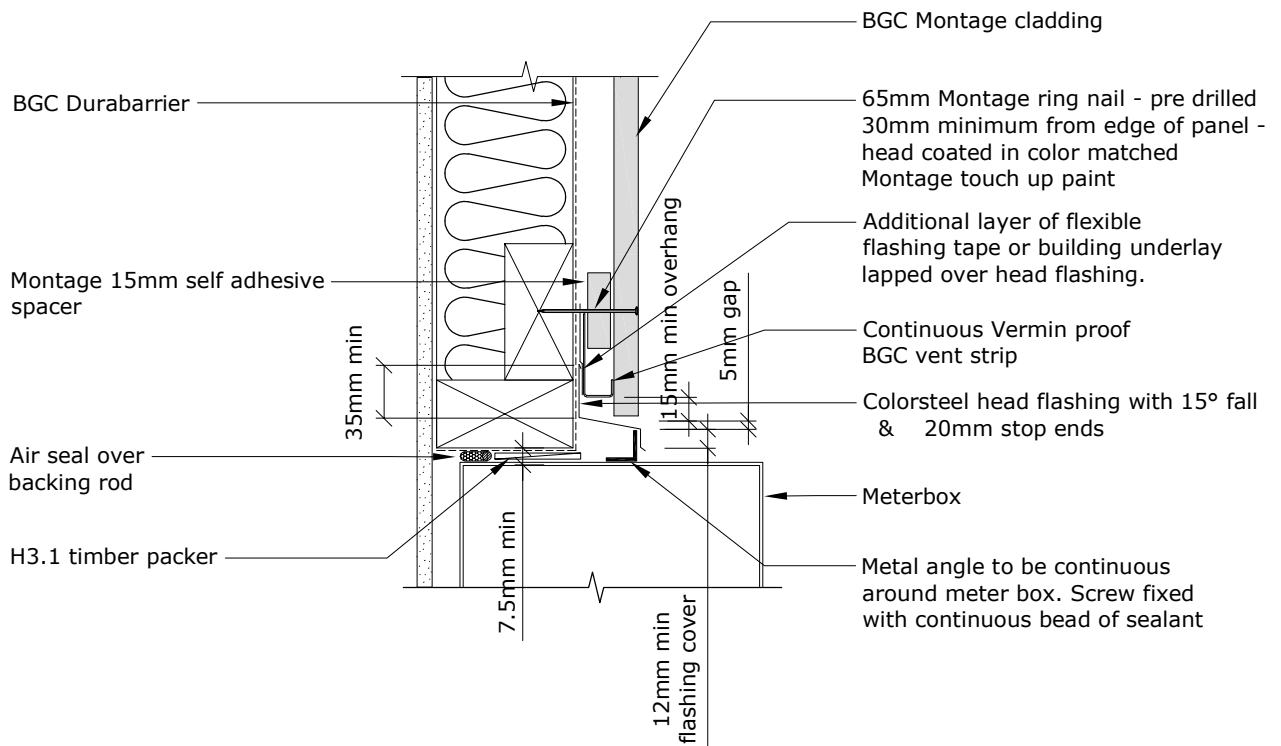
DETAIL **Interstory Control Joint Detail
Horizontal Installation**

SCALE 1:5 @ A4

DETAIL NO. **EH-8**



Fibre Cement



All Montage cut edges to be sealed using Montage K primer and color matched Montage touch up paint as required

PROFILE **BGC Montage™**

DATE **Mar 2022**

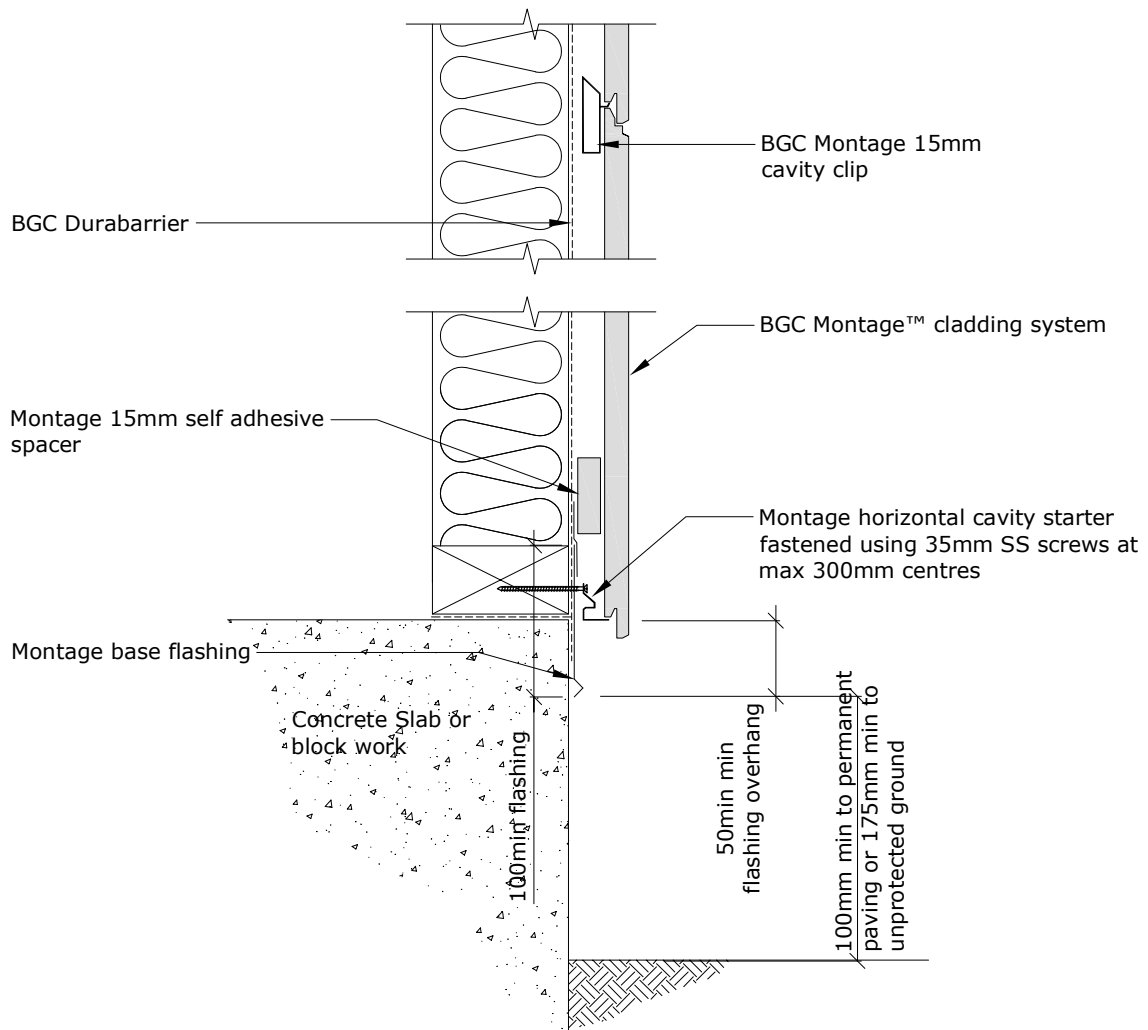
DETAIL **Meter Box Head Detail
Horizontal Installation**

SCALE **1:5 @ A4**

DETAIL NO. **EH-12**



Fibre Cement



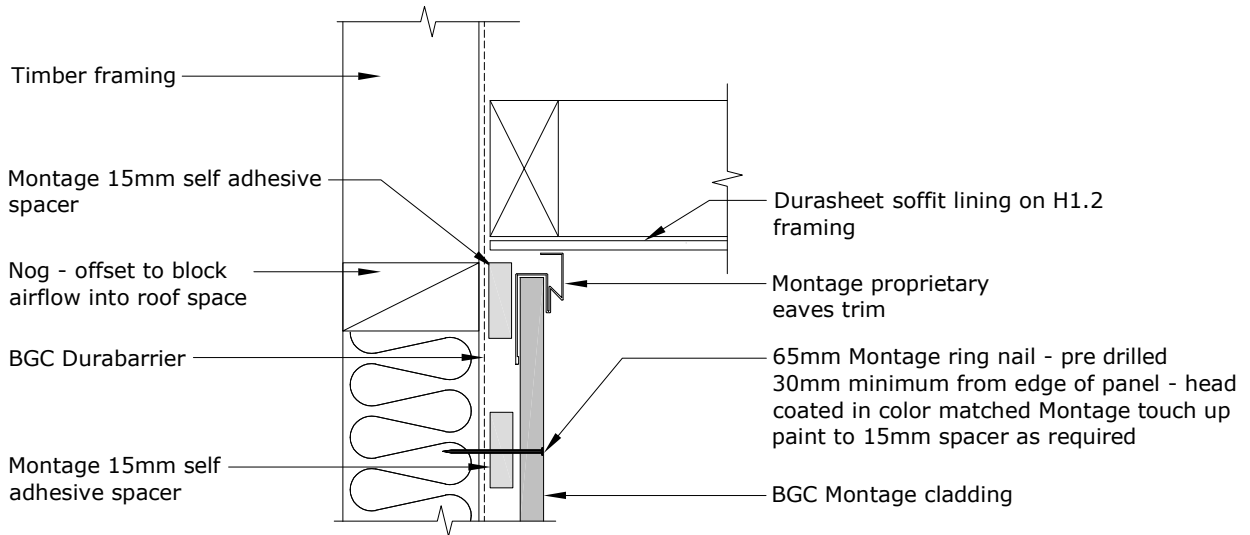
PROFILE BGC Montage™
DETAIL Foundation Detail
Horizontal Installation

DATE Feb 2022
SCALE 1:5 @ A4
DETAIL NO. EH-14

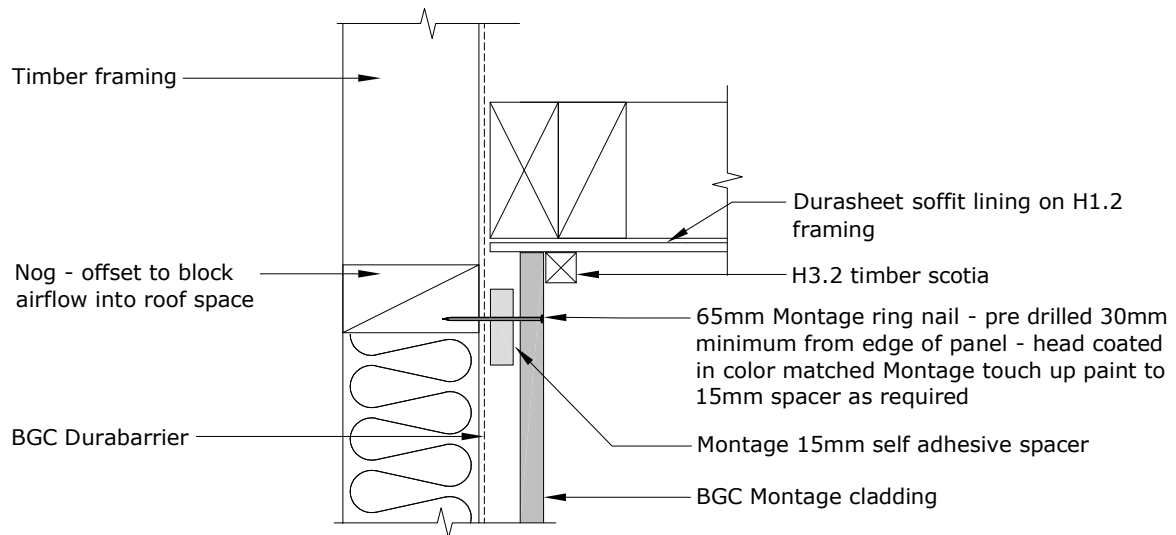


Fibre Cement

All Montage cut edges to be sealed using Montage K primer and color matched Montage touch up paint as required



Trim option



Scotia option

PROFILE **BGC Montage™**

DETAIL **Soffit Detail
Horizontal Installation**

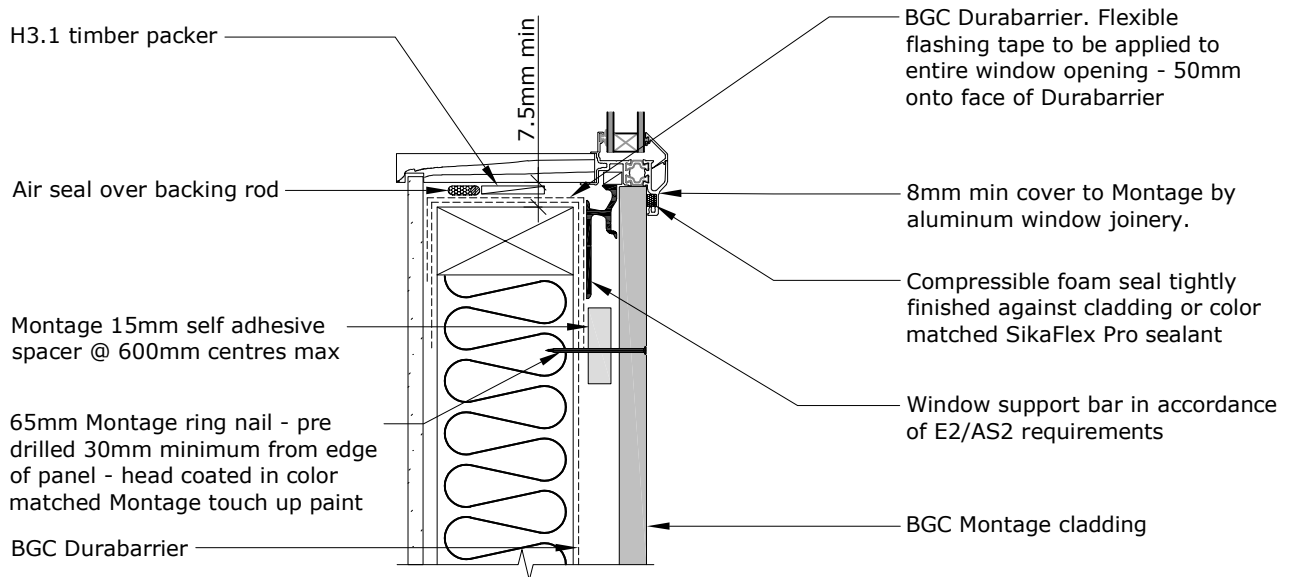
DATE **Mar 2022**

SCALE **1:5 @ A4**

DETAIL NO. **EH-15**



Fibre Cement



All Montage cut edges to be sealed using Montage K primer and color matched Montage touch up paint as required

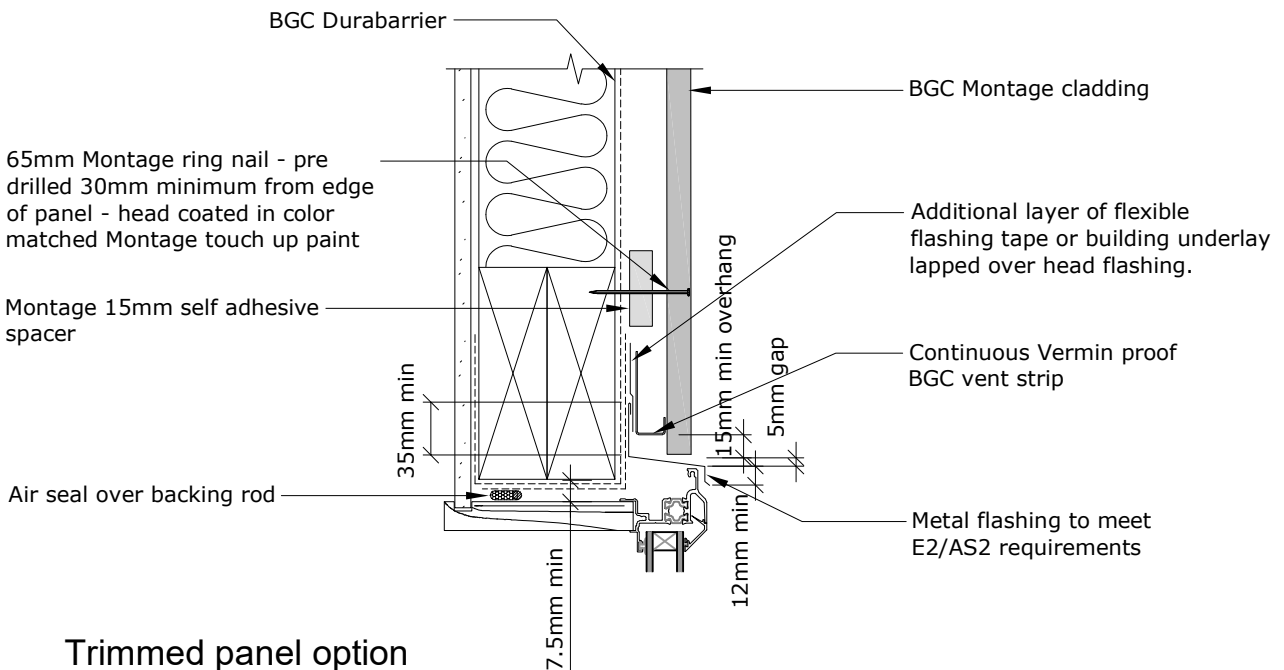
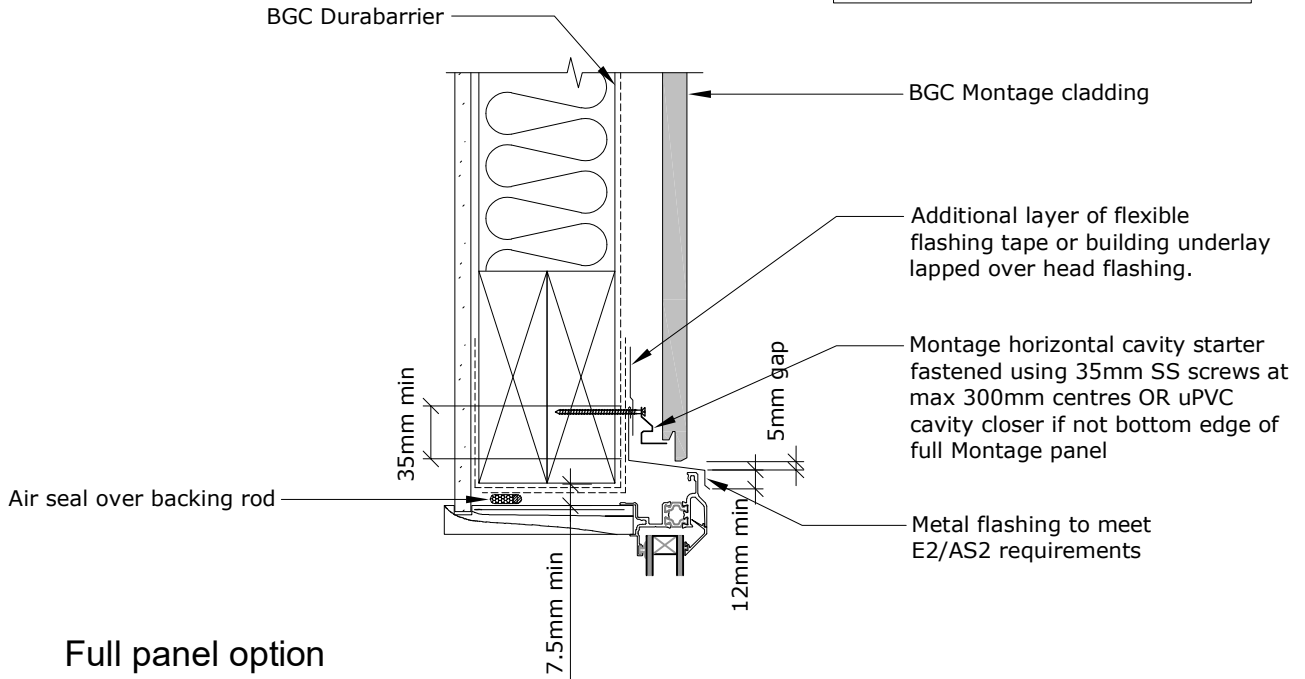
PROFILE **BGC Montage™**
DETAIL **Window Sill Detail
Horizontal Installation**

DATE **Mar 2022**
SCALE **1:5 @ A4**
DETAIL NO. **EH-20a**

BGC

Fibre Cement

For wind exposures Very High and above, sealant to be installed between underside of head flashing and top edge of window head flange



PROFILE BGC Montage™

DATE Mar 2022

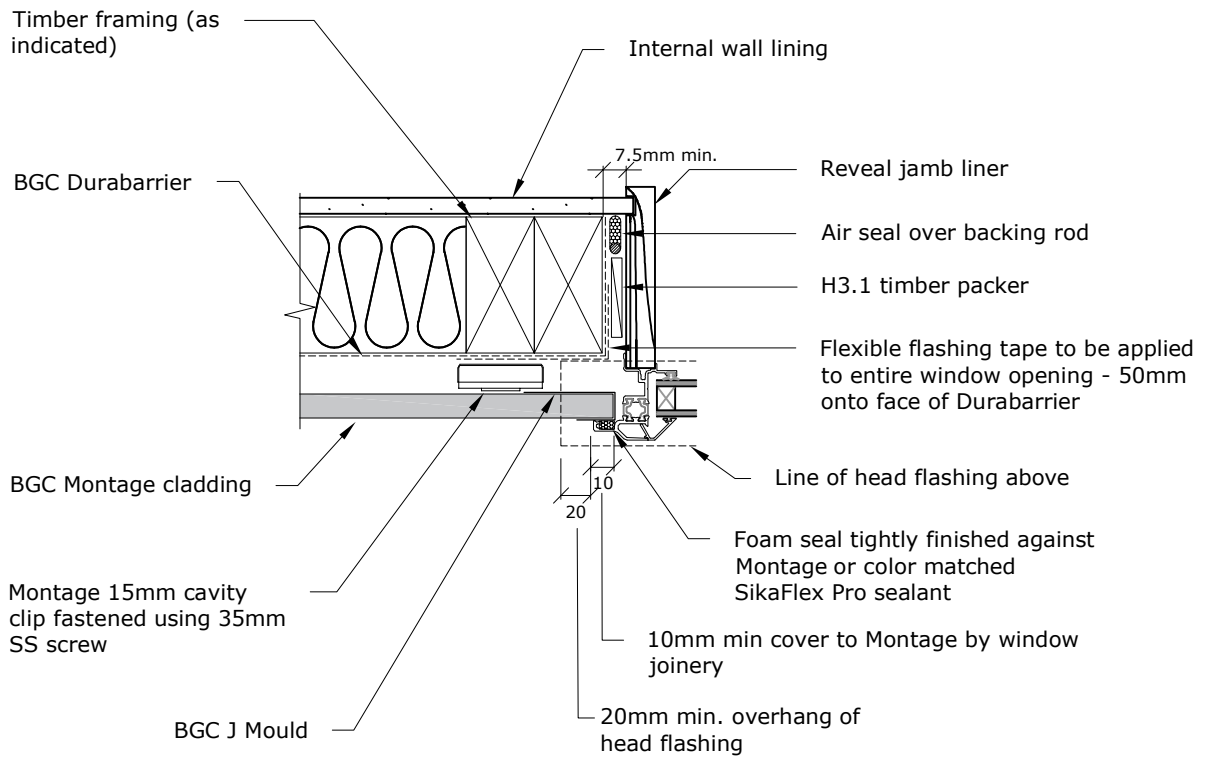
DETAIL Window Head Detail
Horizontal Installation

SCALE 1:5 @ A4

DETAIL NO. EH-20c



Fibre Cement



All Montage cut edges to be sealed using Montage K primer and color matched Montage touch up paint as required

PROFILE **BGC Montage™**

DATE **Mar 2022**

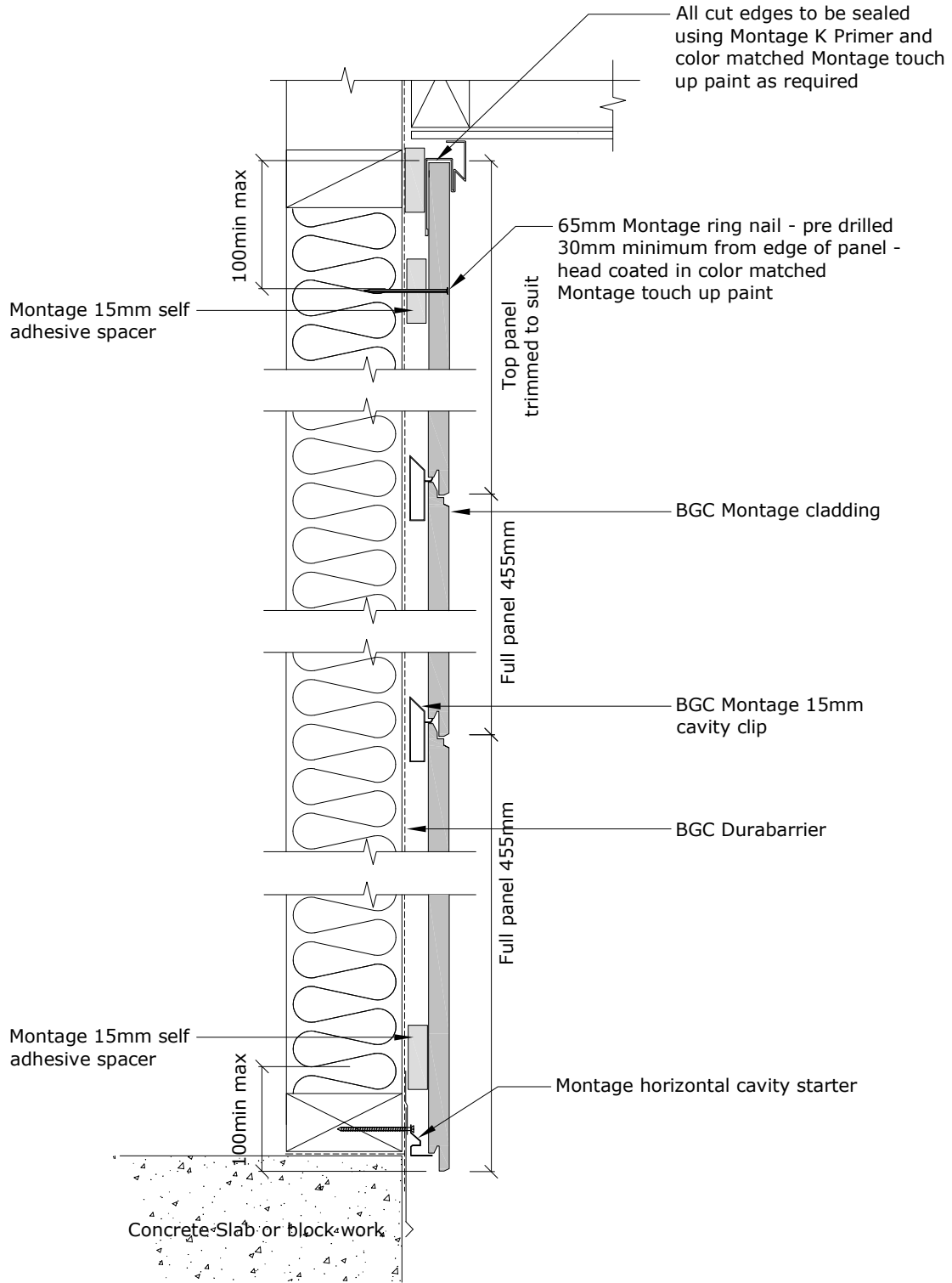
DETAIL **Window Jamb Detail (with J Mould)
Horizontal Installation**

SCALE **1:5 @ A4**

DETAIL NO. **EH-20d**



Fibre Cement



PROFILE **BGC Montage™**

DETAIL **Installation setout
Horizontal Installation**

DATE Feb 2022

SCALE 1:5 @ A4

DETAIL NO. **EH-21**