



GIB®

Fire Rated Systems Supplement

Document

Supplement

ISSUE DATE

ComFlor® composite floor deck flooring system

Oct 2018



GIB®

ComFlor® Detail

Issue Date October 2018

ComFlor® composite floor deck flooring system is commonly used in a wide variety of commercial and residential applications. Winstone Wallboards often receive enquiries about how to detail and construct the junction between GIB® performance partition systems and ComFlor®.

Figures 1 to 4 below show a number of options for the partitions running along and across the ComFlor® profile. The idea is to simply build a flat platform

and construct conventional partition head detail or deflection head detail if the floor deflection has to be accommodated.

Figure 1: ComFlor® detail for wall with profile (option 1)

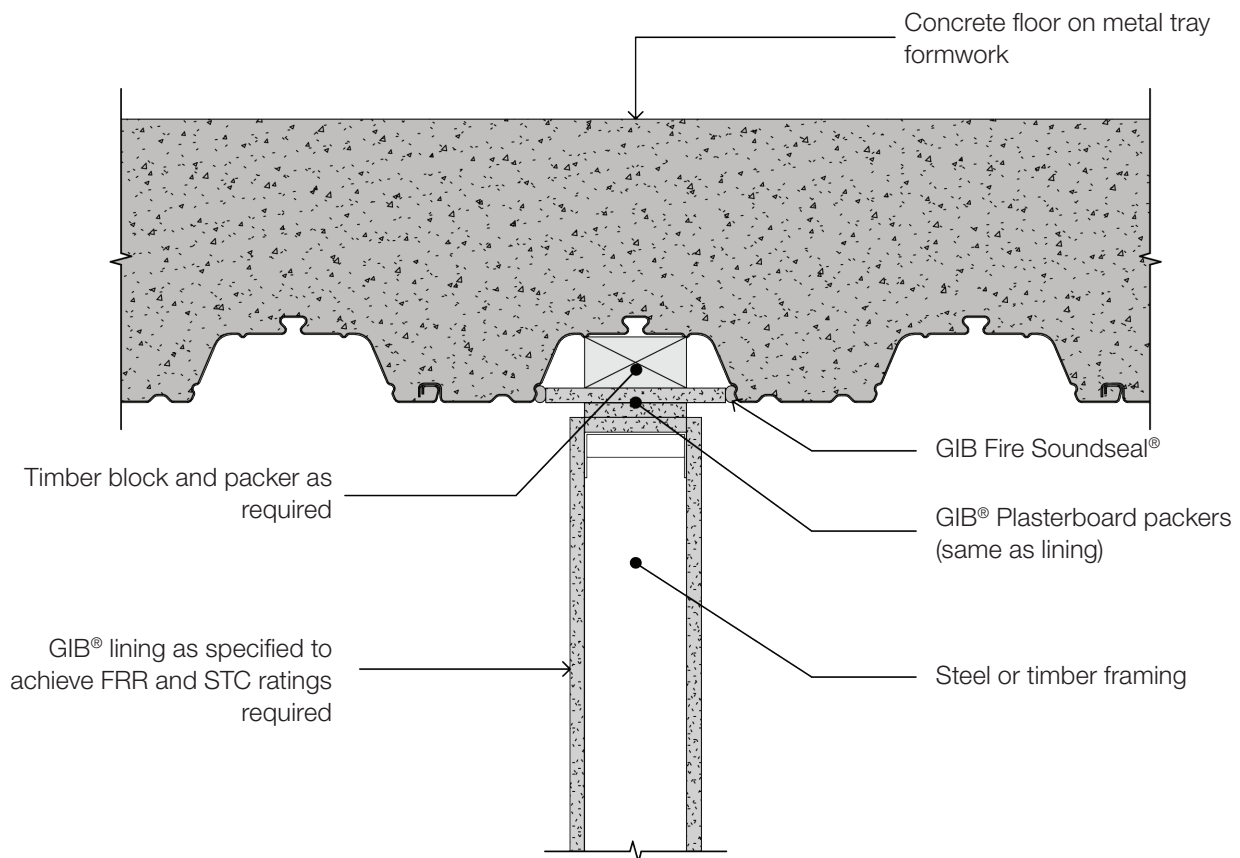


Figure 2: ComFlor® detail for wall with profile (option 2)

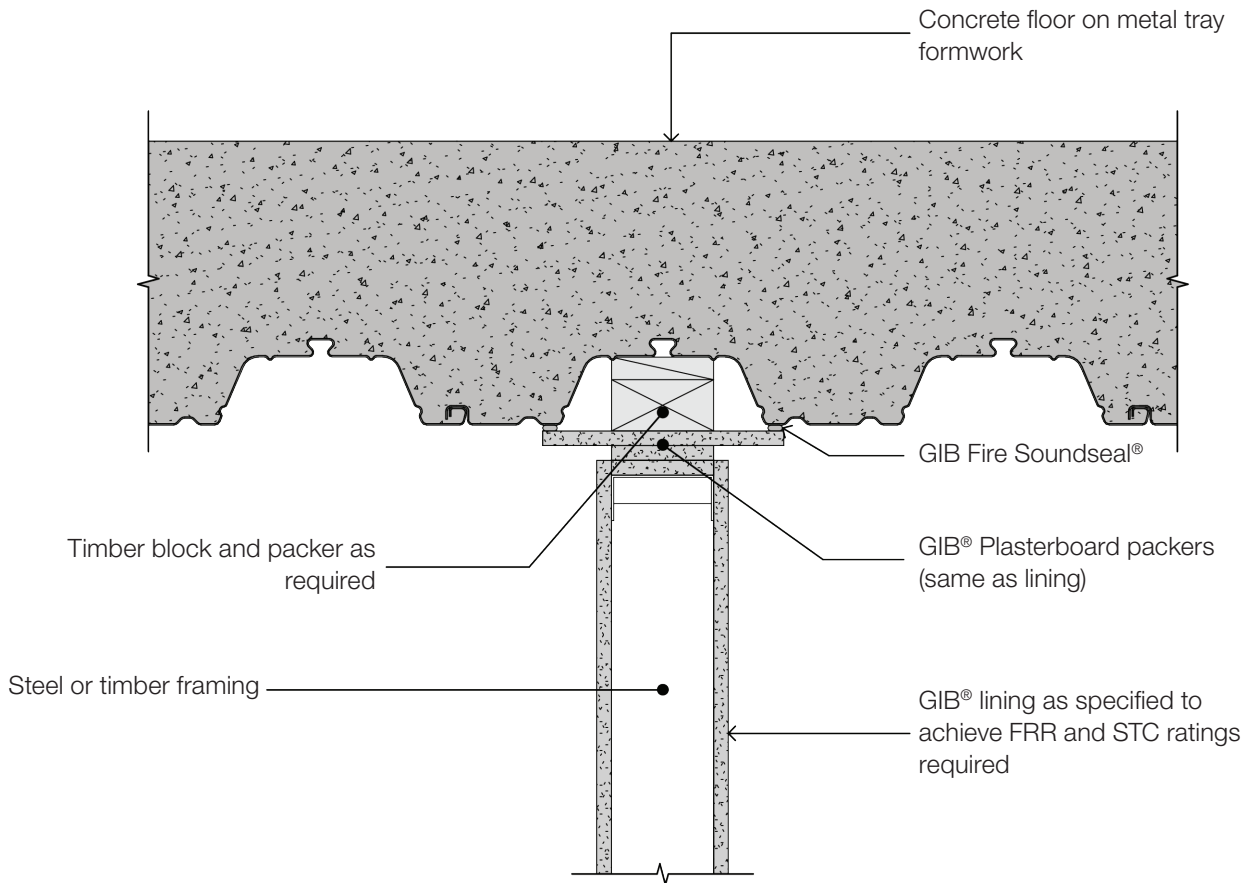


Figure 3: ComFlor® detail for wall with profile (option 3)

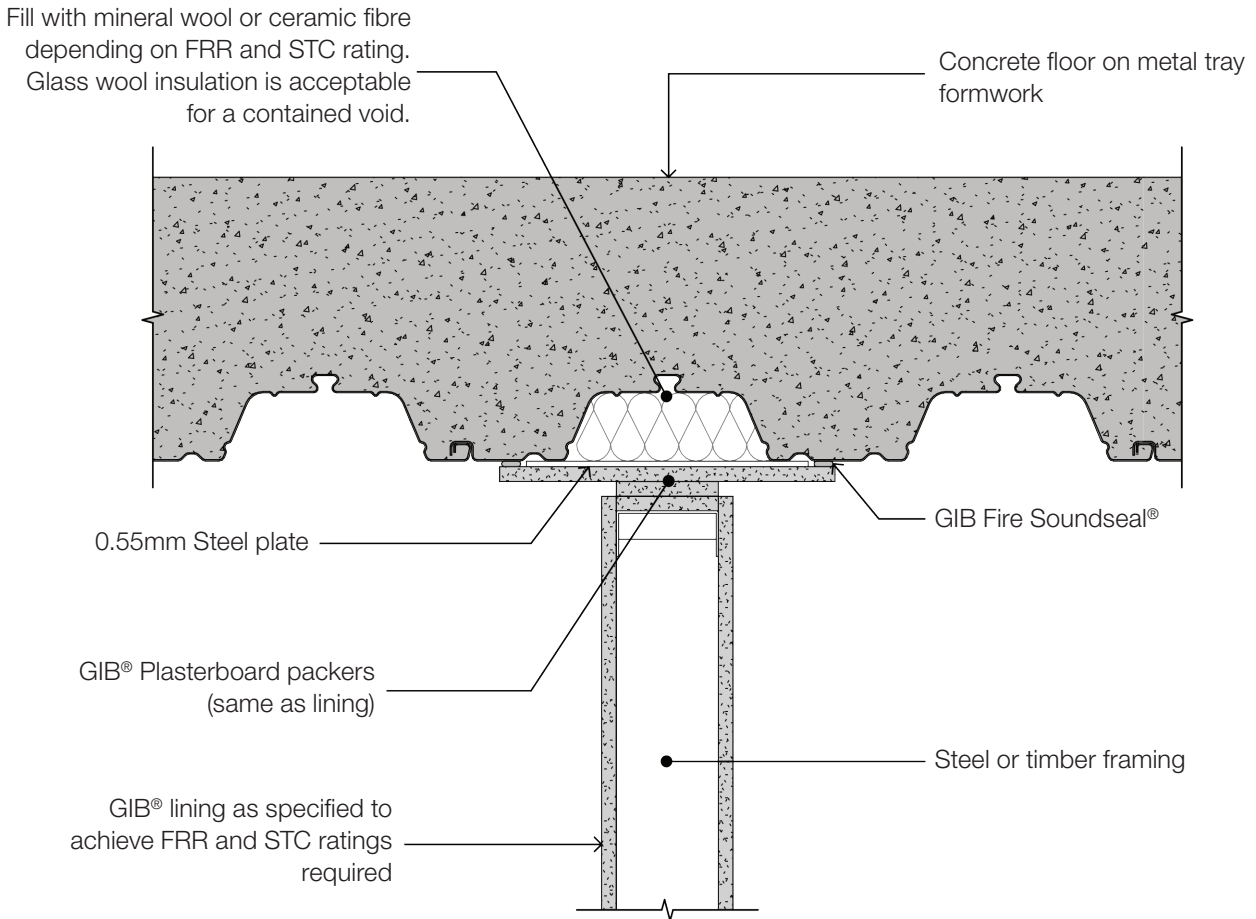
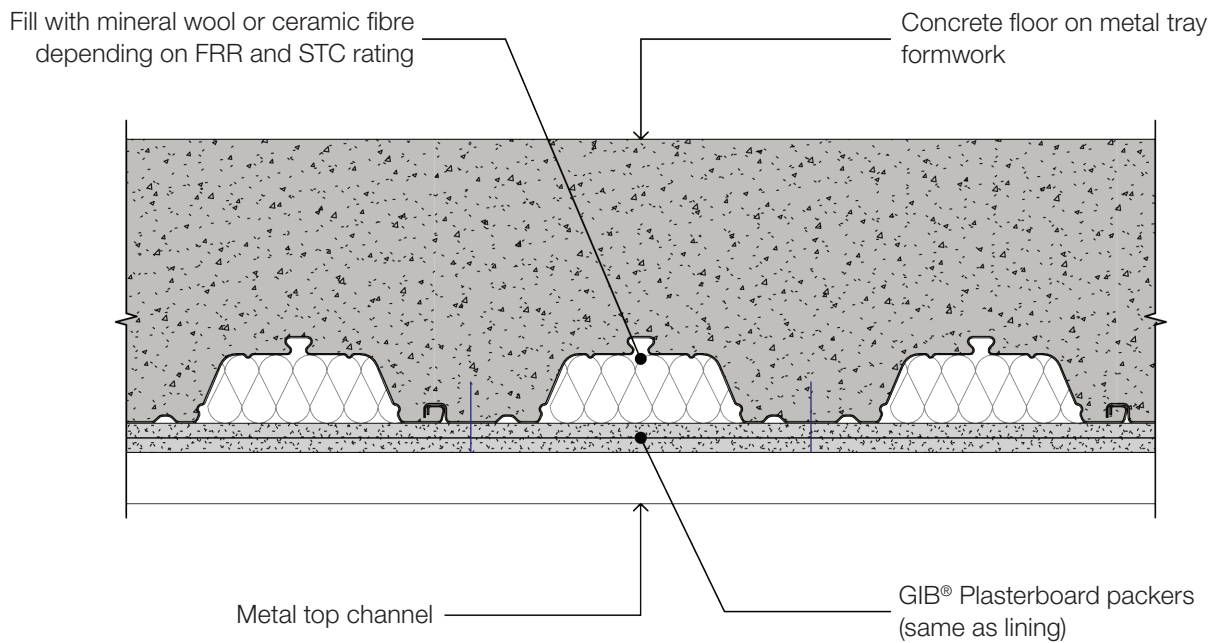


Figure 4: ComFlor® detail for wall across or diagonal to profile



For any further information, please contact the GIB® Helpline on 0800 100 442.