

BGC



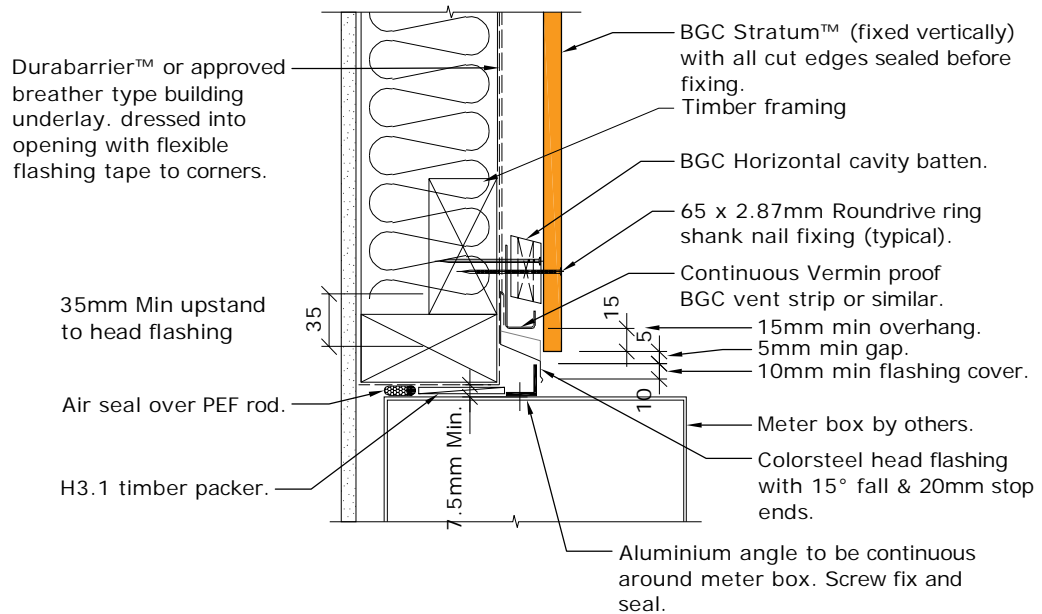
Fibre Cement

Cavity Batten Note:

Refer to cavity batten layout for batten sizes, types, spacing's & fixings

Cladding fixing note:

Refer to cladding fixing layout for all fixing types & spacing's



Note. Where DurabARRIER™ is used flashing tape must be applied to the entire opening

PROFILE **BGC Stratum™ and Stratum™ Duo (Vertical Installation)**
DETAIL **Meter Box Head Detail Cavity Construction**

DATE **May 2019**
SCALE **1:5 @ A4**
DETAIL NO. **SV-16**