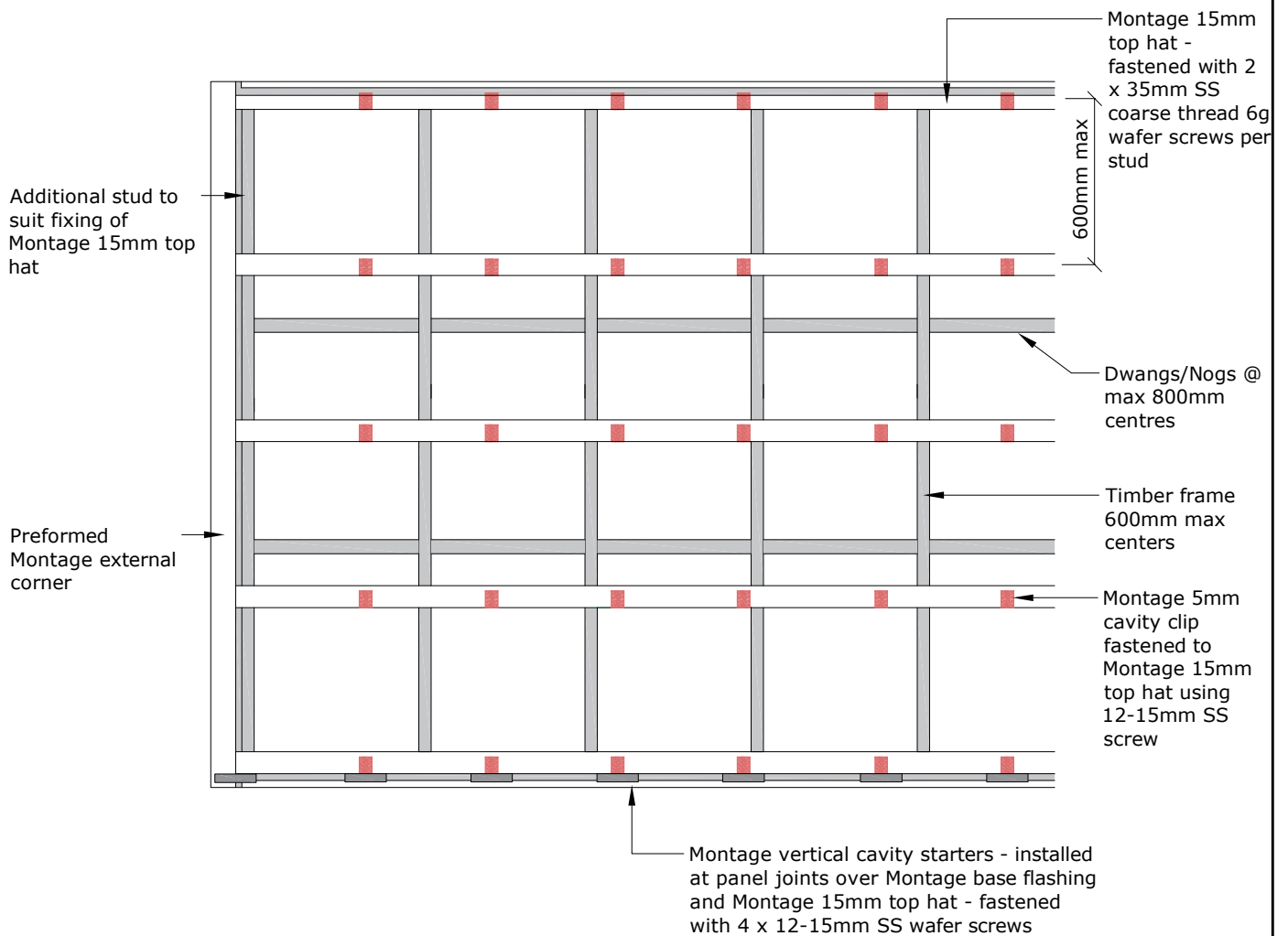




Fibre Cement



PROFILE **BGC Montage™**

DETAIL **Wall Layout Vertical Installation**

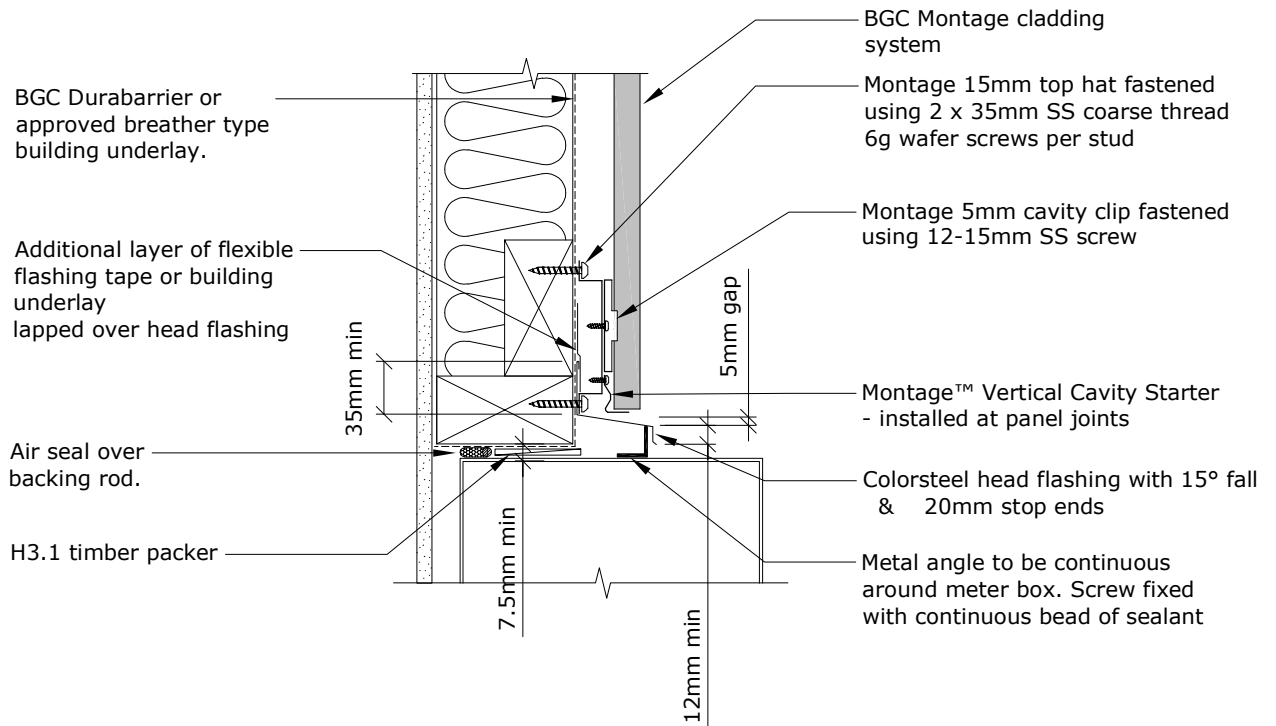
DATE Feb 2022

SCALE 1:25 @ A4

DETAIL NO. **EV-2**



Fibre Cement



PROFILE BGC Montage™

DATE Feb 2022

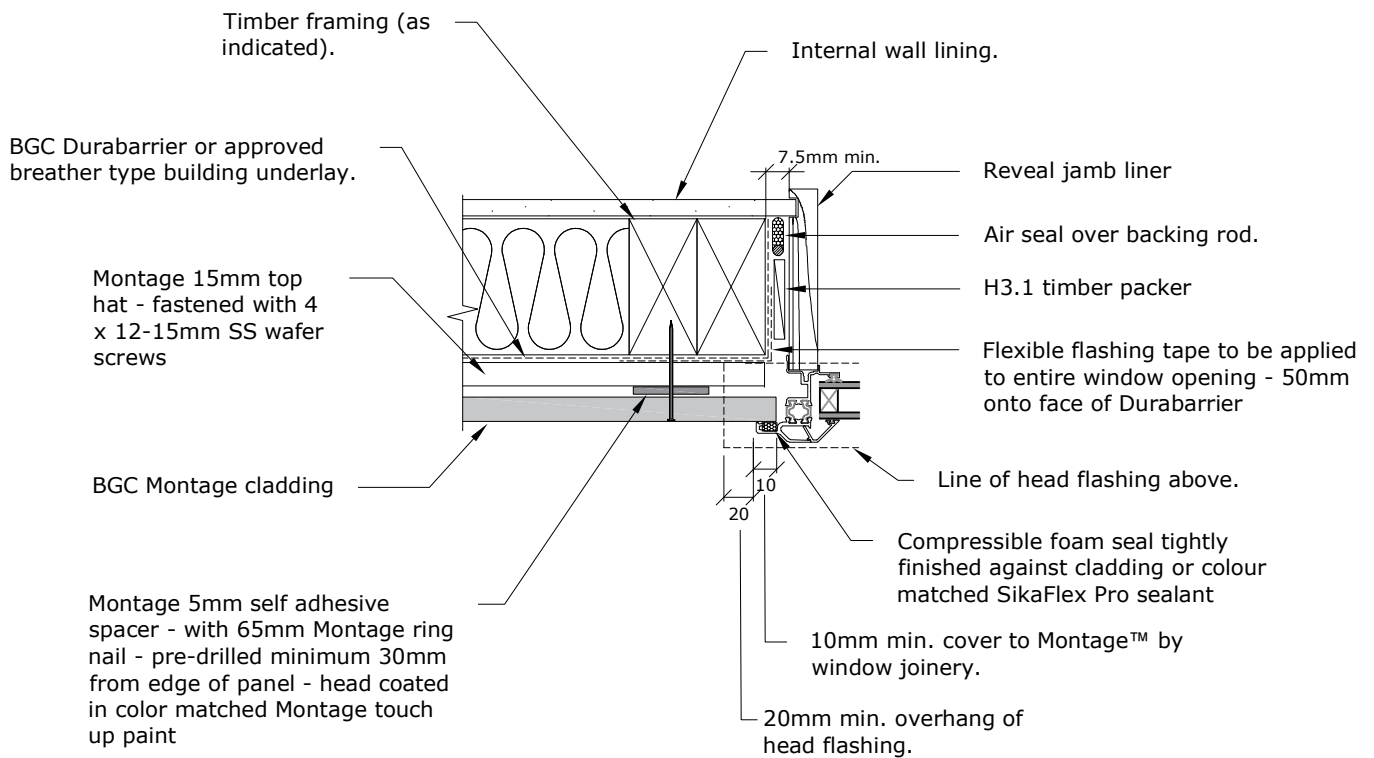
DETAIL Meter Box Head Detail
Vertical Installation

SCALE 1:5 @ A4

DETAIL NO. EV-6



Fibre Cement



Note: All Montage cut edges to be sealed using Montage K Primer and color matched Montage touch up paint as required

PROFILE **BGC Montage™**

DETAIL **Window Jamb Detail
Vertical Installation**

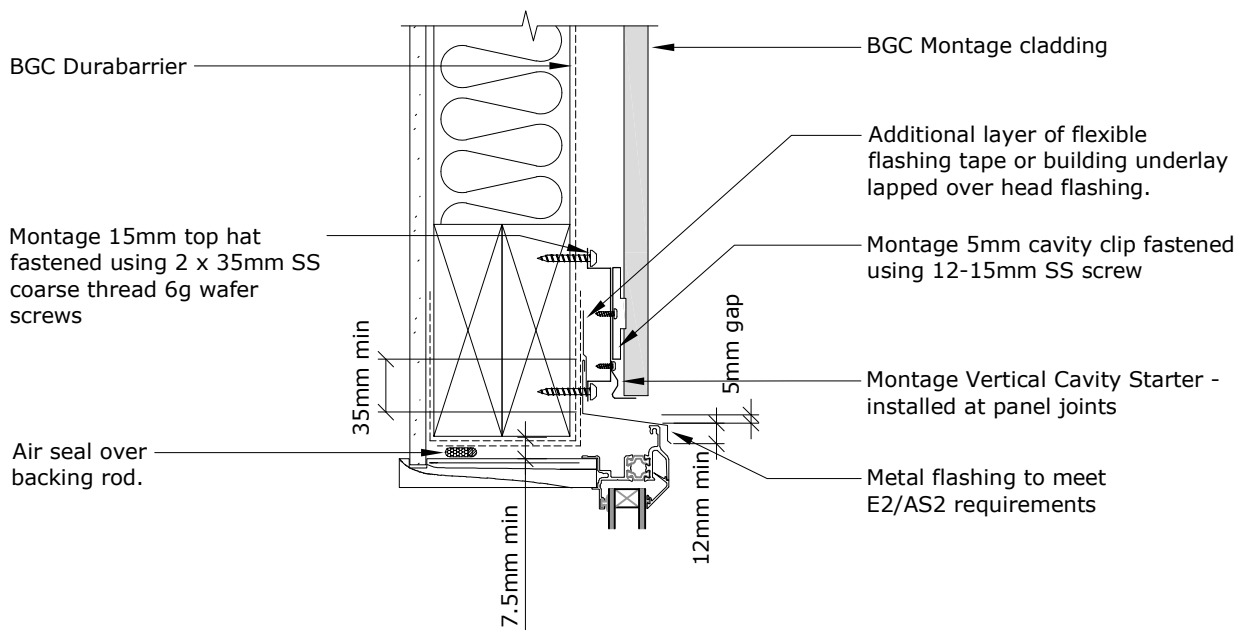
DATE Feb 2022

SCALE 1:5 @ A4

DETAIL NO. **EV-7**



Fibre Cement



For wind exposures Very High and above, sealant to be installed between underside of head flashing and top edge of window head flange

Note: All Montage cut edges to be sealed using Montage K Primer and color matched Montage touch up paint as required

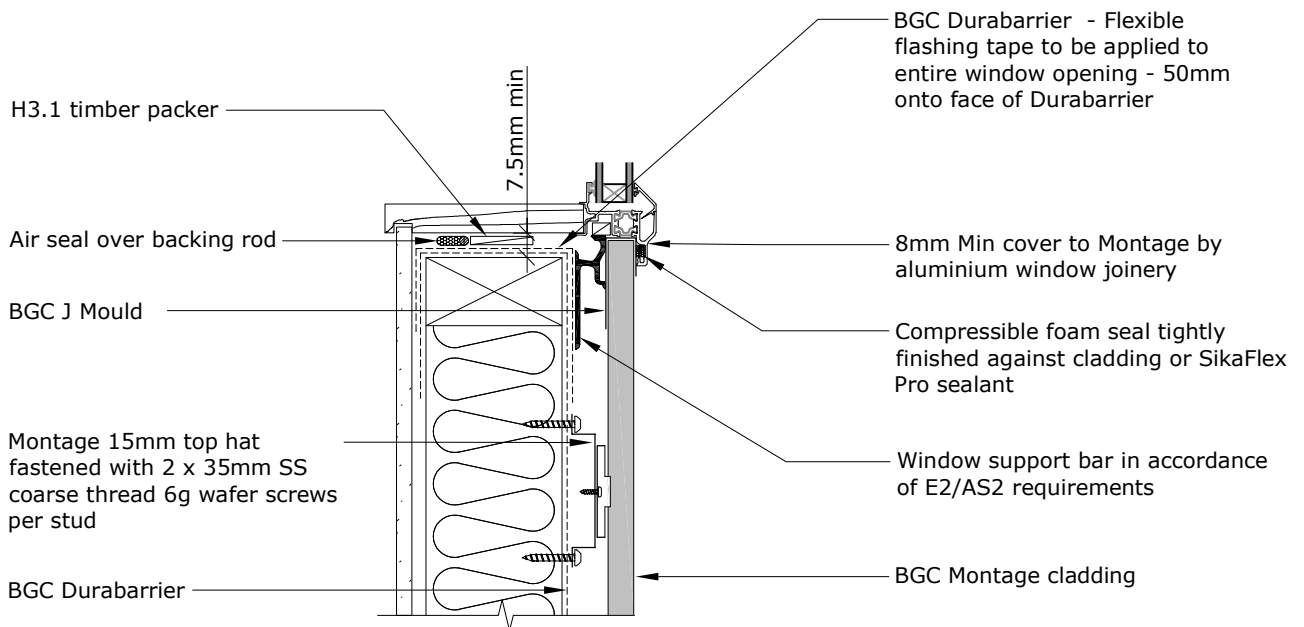
PROFILE **BGC Montage™**

DETAIL **Window Head Detail
Vertical Installation**

DATE Feb 2022

SCALE 1:5 @ A4

DETAIL NO. **EV-8**

BGC**Fibre Cement**

PROFILE **BGC Montage™**

DETAIL **Window Sill Detail
Vertical Installation**

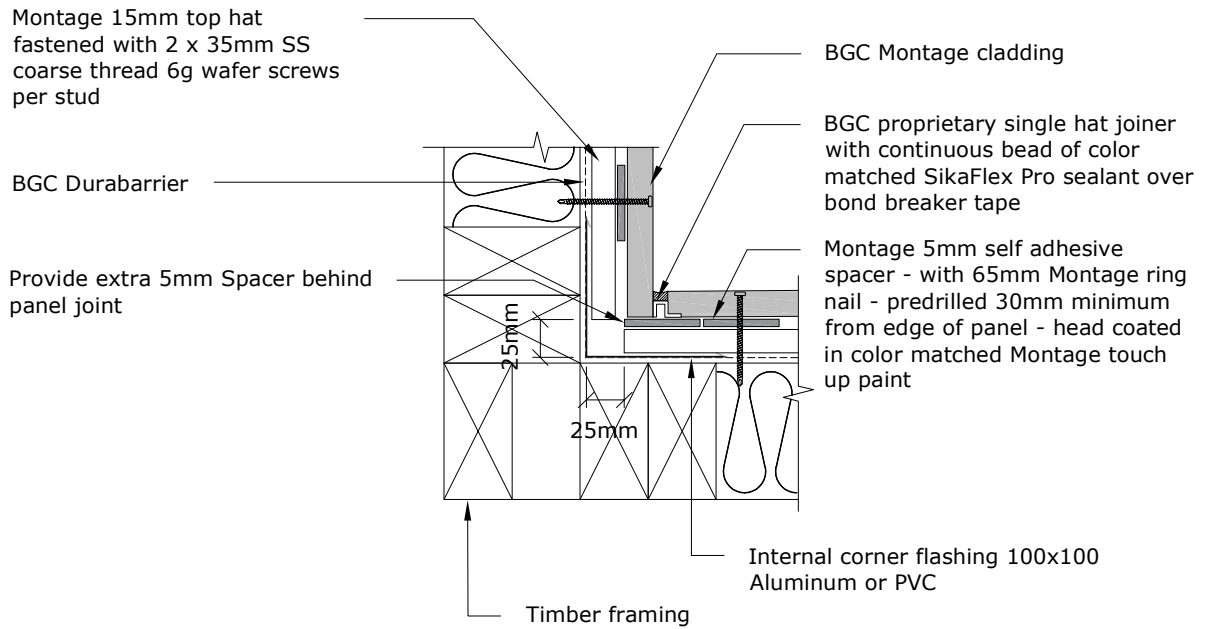
DATE Feb 2022

SCALE 1:5 @ A4

DETAIL NO. **EV-9**



Fibre Cement



PROFILE **BGC Montage™**

DATE Feb 2022

DETAIL **Internal Corner Detail
Vertical Installation**

SCALE 1:5 @ A4

DETAIL NO. **EV-10**



Fibre Cement

Montage 15mm top hat fastened with 2 x 35mm SS coarse thread 6g wafer screws per stud

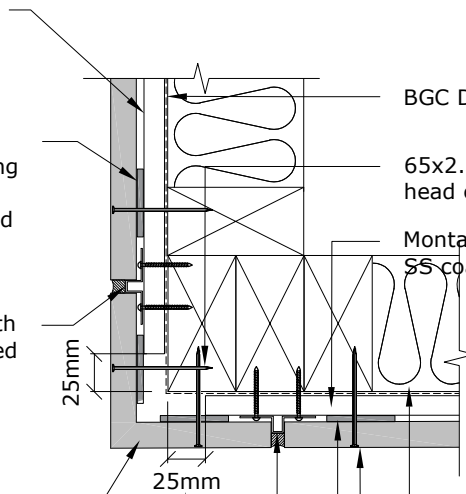
Montage 5mm self adhesive spacer - with 65mm Montage ring nail - predrilled 30mm minimum from edge of panel - head coated in color matched Montage touch up paint

BGC Montage high hat joiner with continuous bead of color matched SikaFlex Pro sealant over bond breaker tape

BGC Montage preformed corner

Montage 15mm top hat stops 25mm back from corner of framing

BGC Montage high hat joiner with continuous bead of color matched SikaFlex Pro sealant over bond breaker tape



BGC DurabARRIER

65x2.8mm Roundrive ring shank galvanized nail - head coated in color matched touch up paint

Montage 15mm top hat fastened with 2 x 35mm SS coarse thread 6g wafer screws per stud

Timber framing

BGC Montage cladding

Montage 5mm self adhesive spacer - with 65mm Montage ring nail - predrilled 30mm minimum from edge of panel - head coated in color matched Montage touch up paint

Note: All Montage cut edges to be sealed using Montage K Primer and color matched Montage touch up paint as required

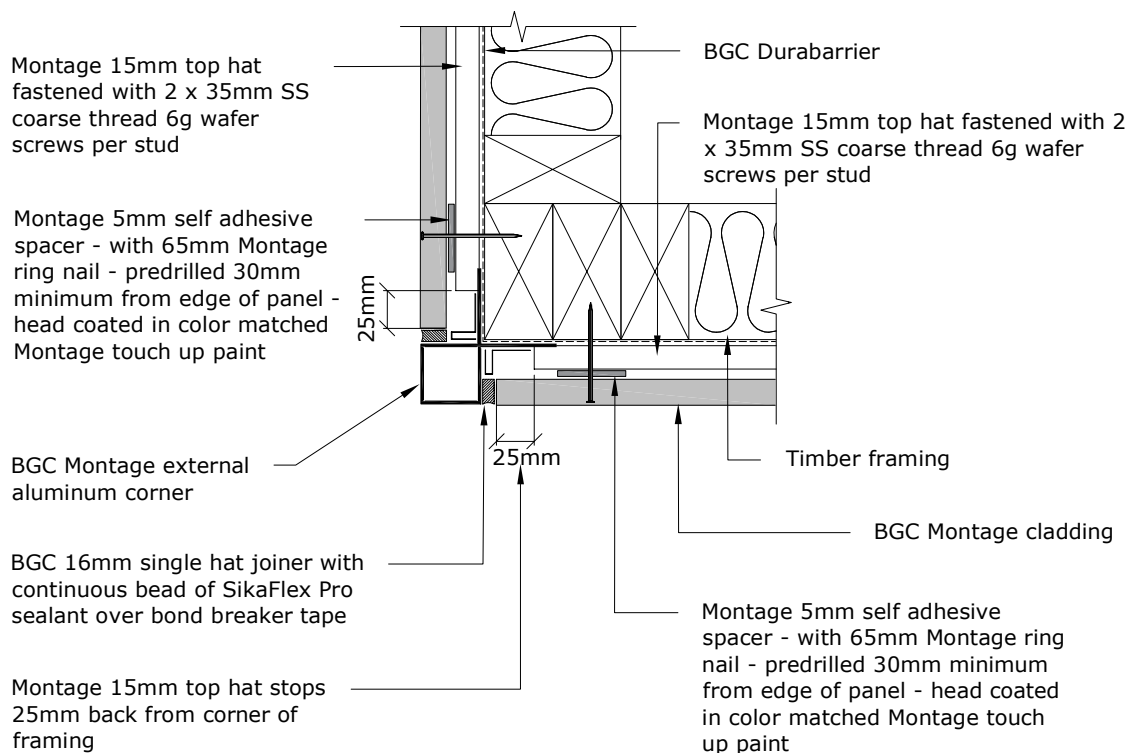
PROFILE **BGC Montage™**

DATE Feb 2022

DETAIL **External Corner Detail - Preformed Corner Vertical Installation**

SCALE 1:5 @ A4

DETAIL NO. **EV-11**

BGC**Fibre Cement**

Note: All Montage cut edges to be sealed using Montage K Primer and color matched Montage touch up paint as required

PROFILE **BGC Montage™**

DATE Mar 2022

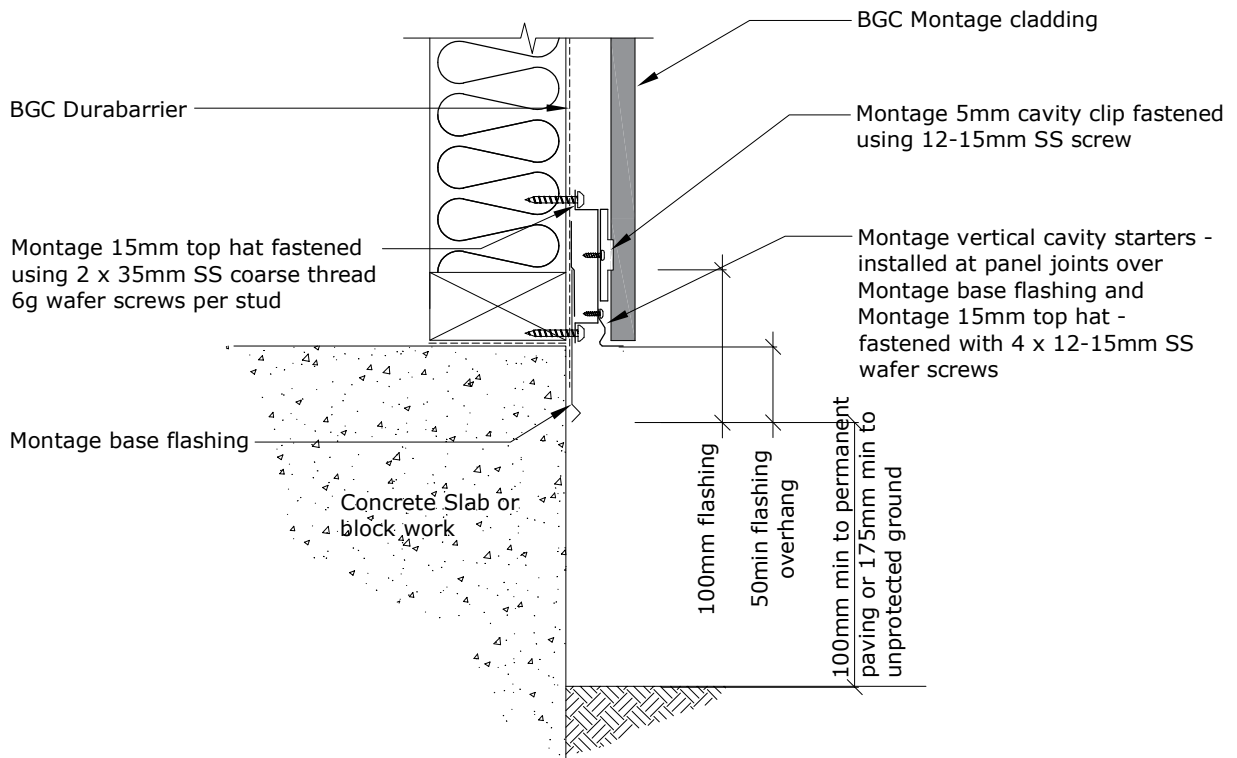
DETAIL **External Corner Detail - Aluminum Corner Vertical Installation**

SCALE 1:5 @ A4

DETAIL NO. **EV-11a**



Fibre Cement



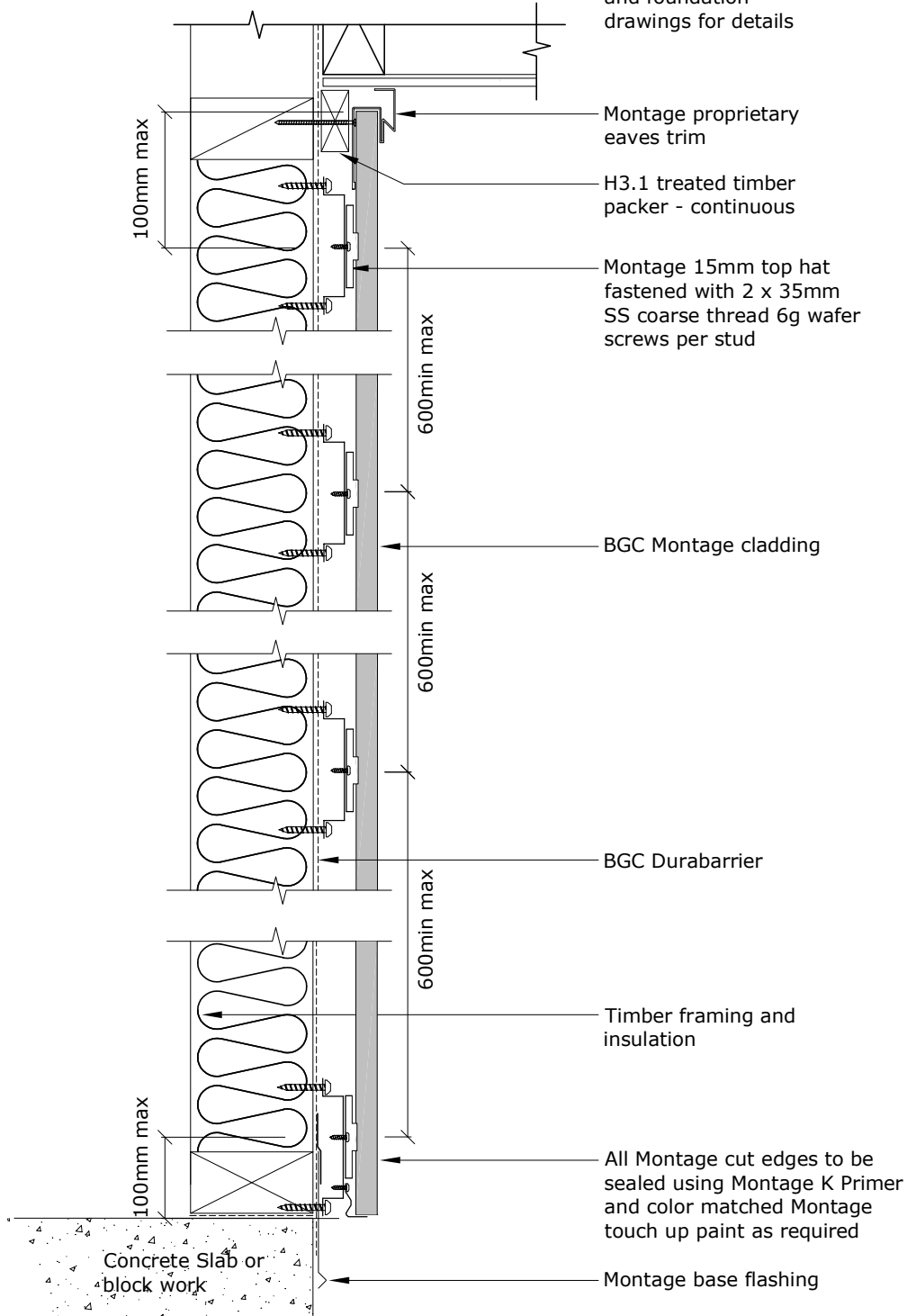
PROFILE **BGC Montage™**
DETAIL **Foundation Detail
Vertical Installation**

DATE Feb 2022
SCALE 1:5 @ A4
DETAIL NO. **EV-12**



Fibre Cement

Note: refer to soffit and foundation drawings for details



PROFILE **BGC Montage™**

DATE Feb 2022

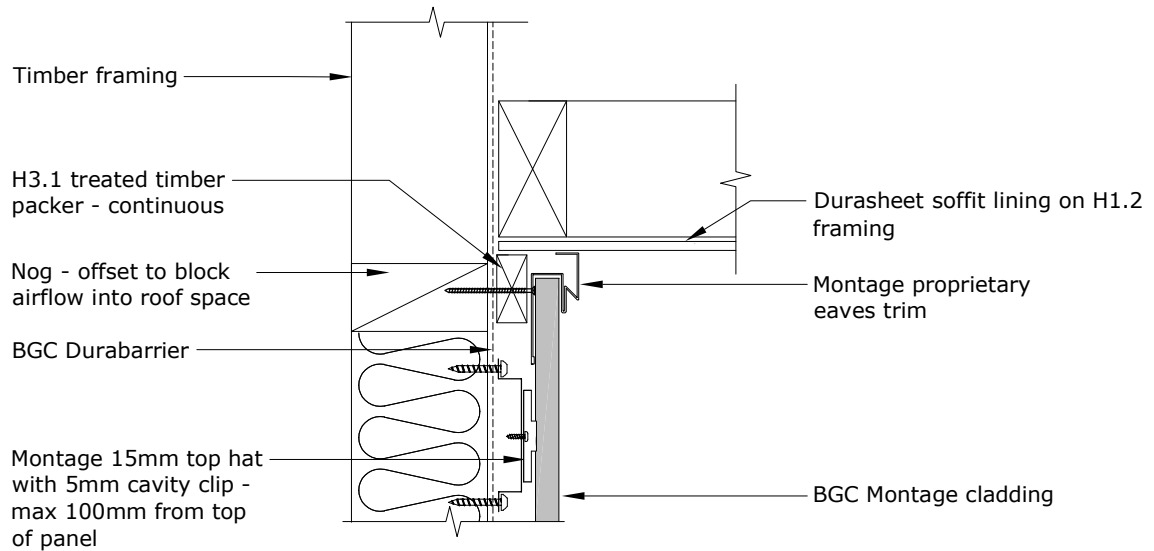
DETAIL **Vertical installation setout
Vertical Installation**

SCALE 1:5 @ A4

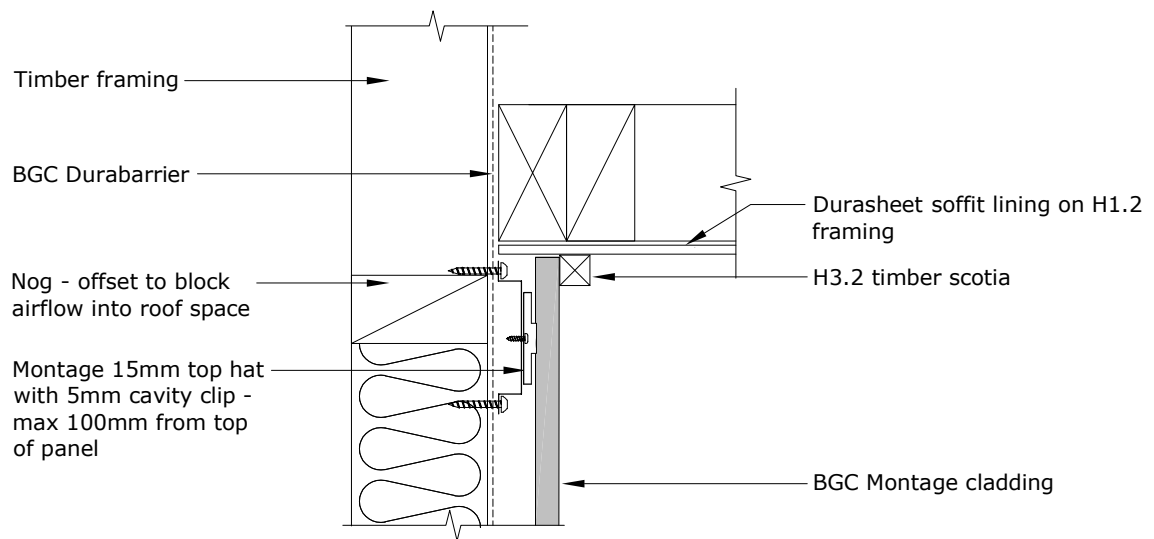
DETAIL NO. **EV-20**



Fibre Cement



Trim option



Scotia option

PROFILE **BGC Montage™**

DETAIL **Soffit Detail
Vertical Installation**

DATE Feb 2022

SCALE 1:5 @ A4

DETAIL NO. **EV-28**