

# BGC



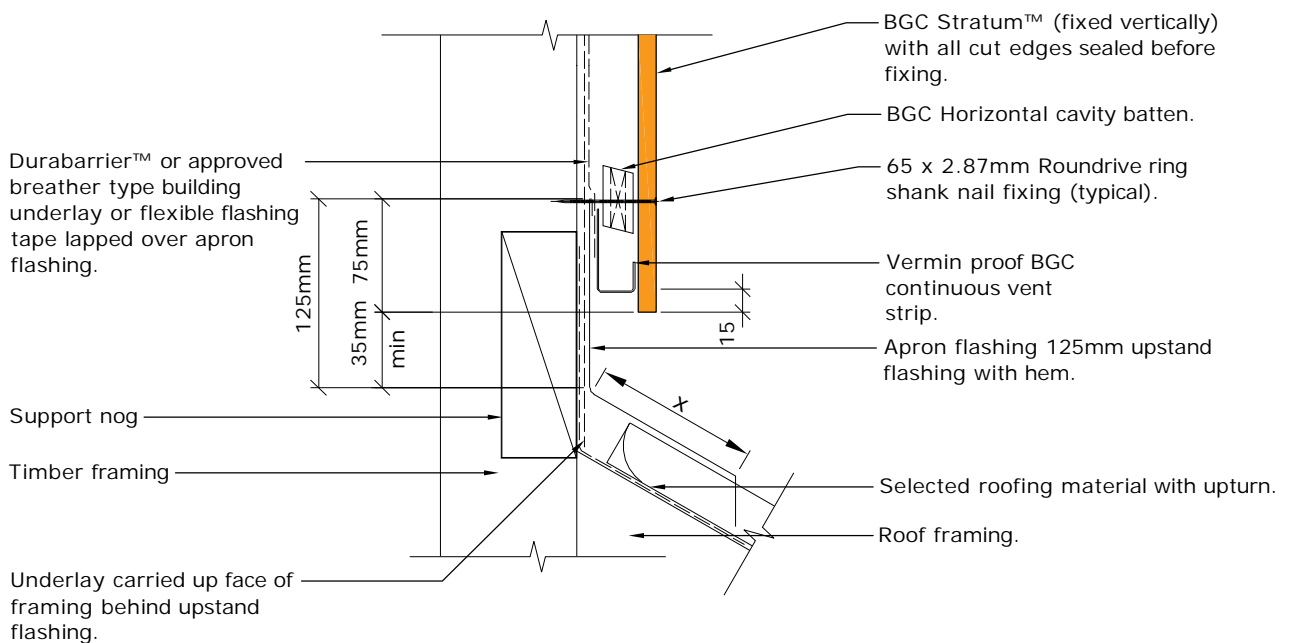
# Fibre Cement

**Cavity Batten Note:**

Refer to cavity batten layout for batten sizes, types, spacing's & fixings

**Cladding fixing note:**

Refer to cladding fixing layout for all fixing types & spacing's



**Note:**

x = Refer to NZBC E2 / AS1 Table for flashing cover requirements

PROFILE **BGC Stratum™ and Stratum™ Duo (Vertical Installation)**  
DETAIL **Transverse Apron Flashing Detail Cavity Construction**

DATE **May 2019**  
SCALE **1:5 @ A4**  
DETAIL NO. **SV-24**