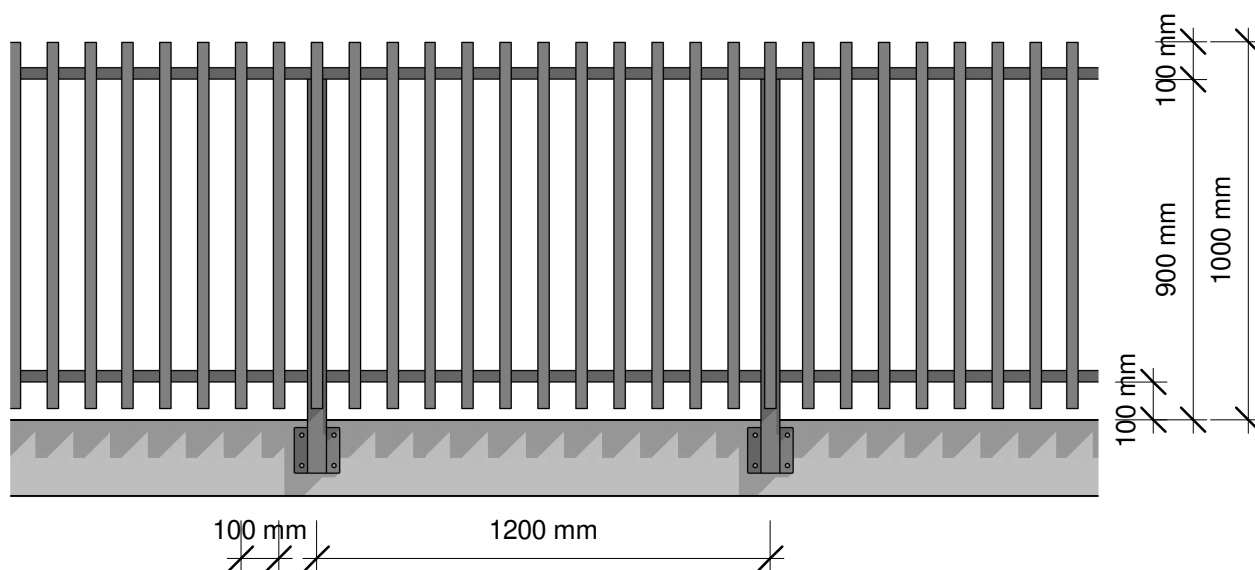


Plan



Elevation

Plot Date: 22 May 2019 13:31

© 2019. The copyright of this document is the property of Glass Vice Limited and shall not be reproduced, copied, loaned or disposed of directly, or indirectly, nor used for any purpose other than that for which it is specifically furnished without prior consent.

All dimensions in millimetres



Vertical Battens

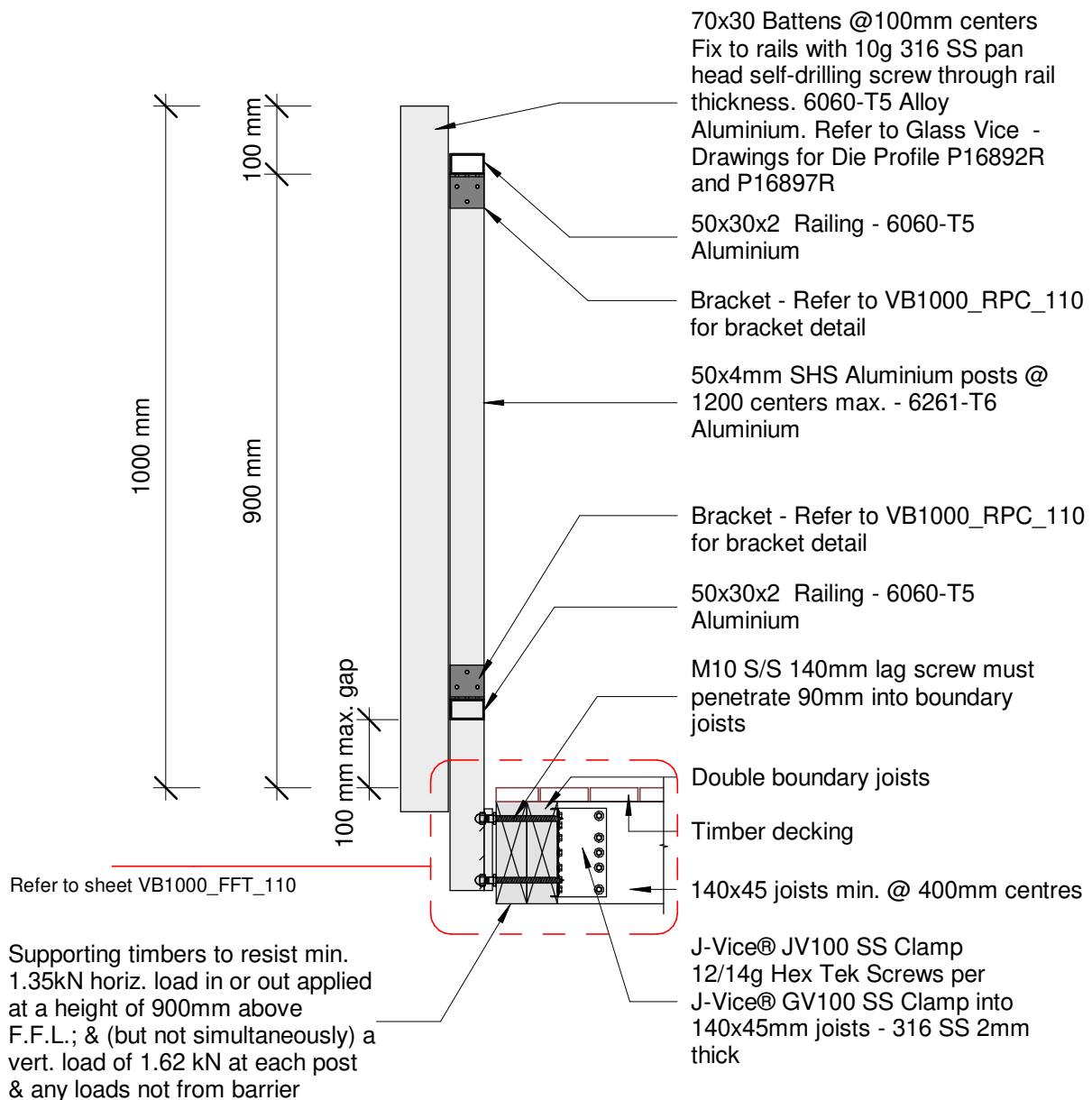
1000mm High Face Fixed

Elevation - Face Fix 1M Residential Barrier

Date: 10 April 2019
Scale: 1 : 20
Issue 01

www.glassvice.com
Phone +64 9 414 6565
info@glassvice.com

VB1000_110



Plot Date: 22 May 2019 13:31

© 2019. The copyright of this document is the property of Glass Vice Limited and shall not be reproduced, copied, loaned or disposed of directly, or indirectly, nor used for any purpose other than that for which it is specifically furnished without prior consent.

All dimensions in millimetres

GLASS
VICE

Vertical Battens

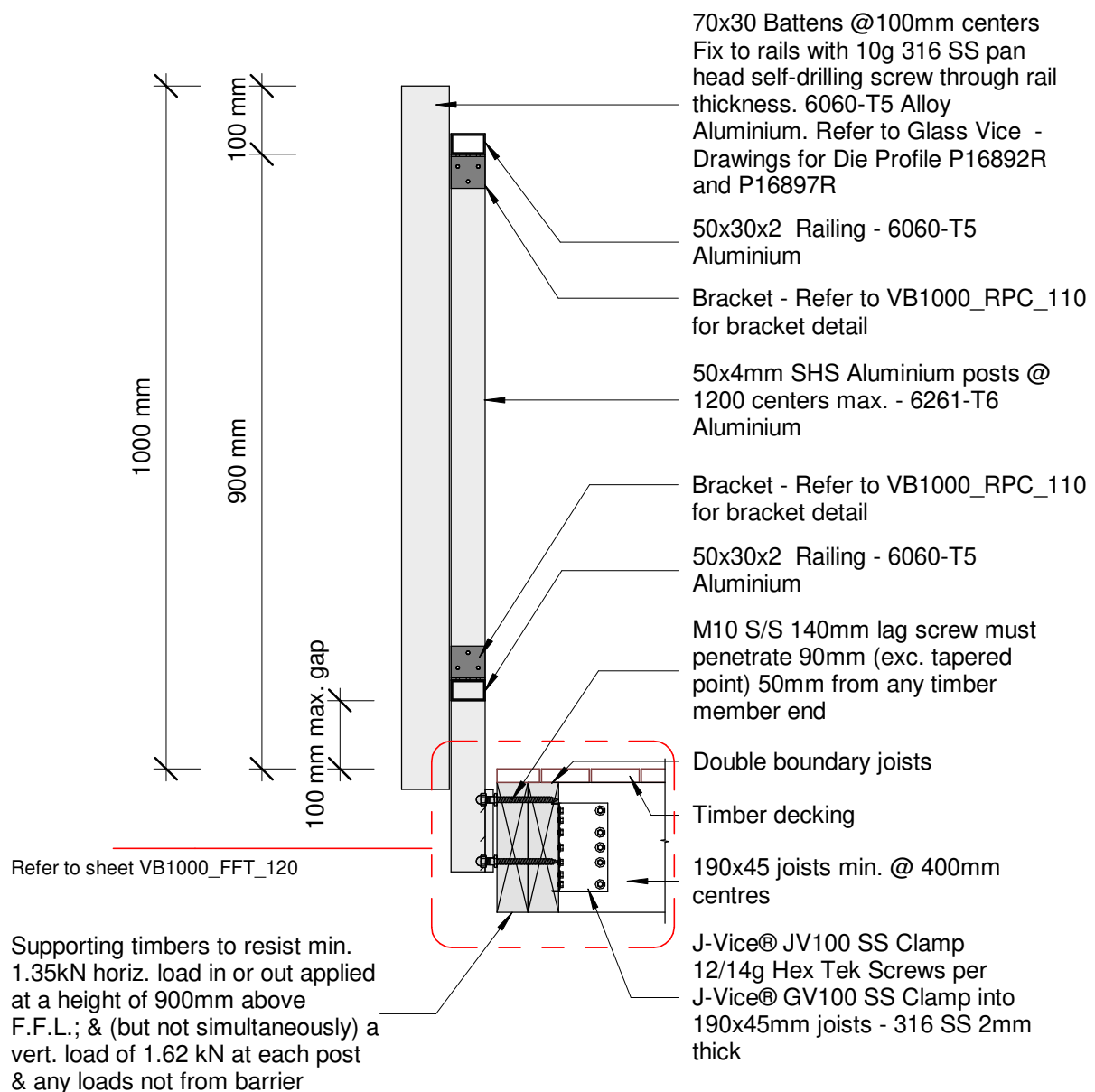
1000mm High Face Fixed into Timber

Section - Face Fix Double Joist 140 1M Residential Barrier

Date: 10 April 2019
Scale: 1 : 10
Issue 01

www.glassvice.com
Phone +64 9 414 6565
info@glassvice.com

VB1000_120



Plot Date: 22 May 2019 13:31

© 2019. The copyright of this document is the property of Glass Vice Limited and shall not be reproduced, copied, loaned or disposed of directly, or indirectly, nor used for any purpose other than that for which it is specifically furnished without prior consent.

All dimensions in millimetres

GLASS
VICE®

Vertical Battens

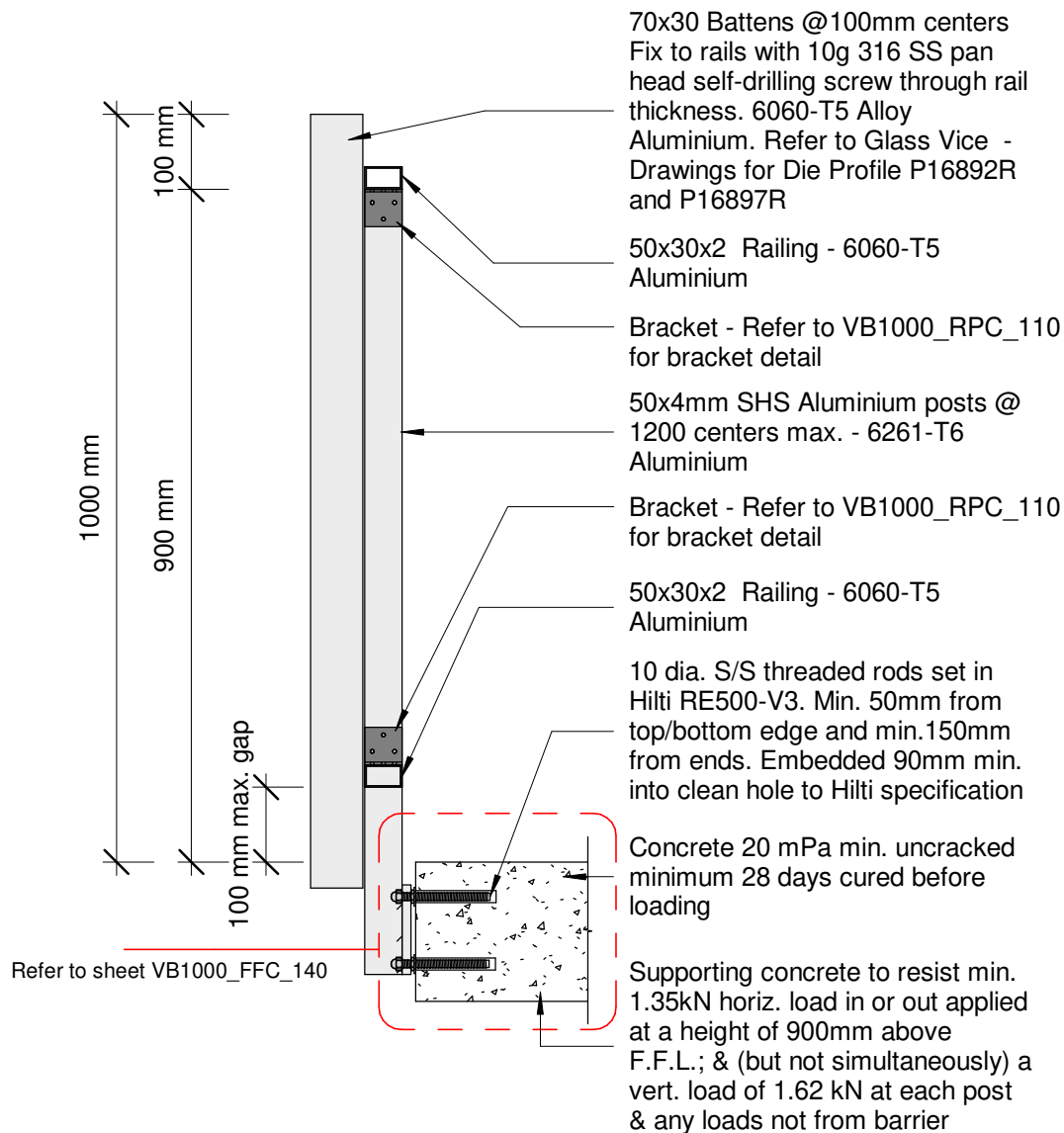
1000mm High Face Fixed into Timber

Section - Face Fix Double Joist 190 1M Residential Barrier

Date: 10 April 2019
Scale: 1 : 10
Issue 01

www.glassvice.com
Phone +64 9 414 6565
info@glassvice.com

VB1000_130



Plot Date: 22 May 2019 13:31

© 2019. The copyright of this document is the property of Glass Vice Limited and shall not be reproduced, copied, loaned or disposed of directly, or indirectly, nor used for any purpose other than that for which it is specifically furnished without prior consent.

All dimensions in millimetres



Vertical Batters

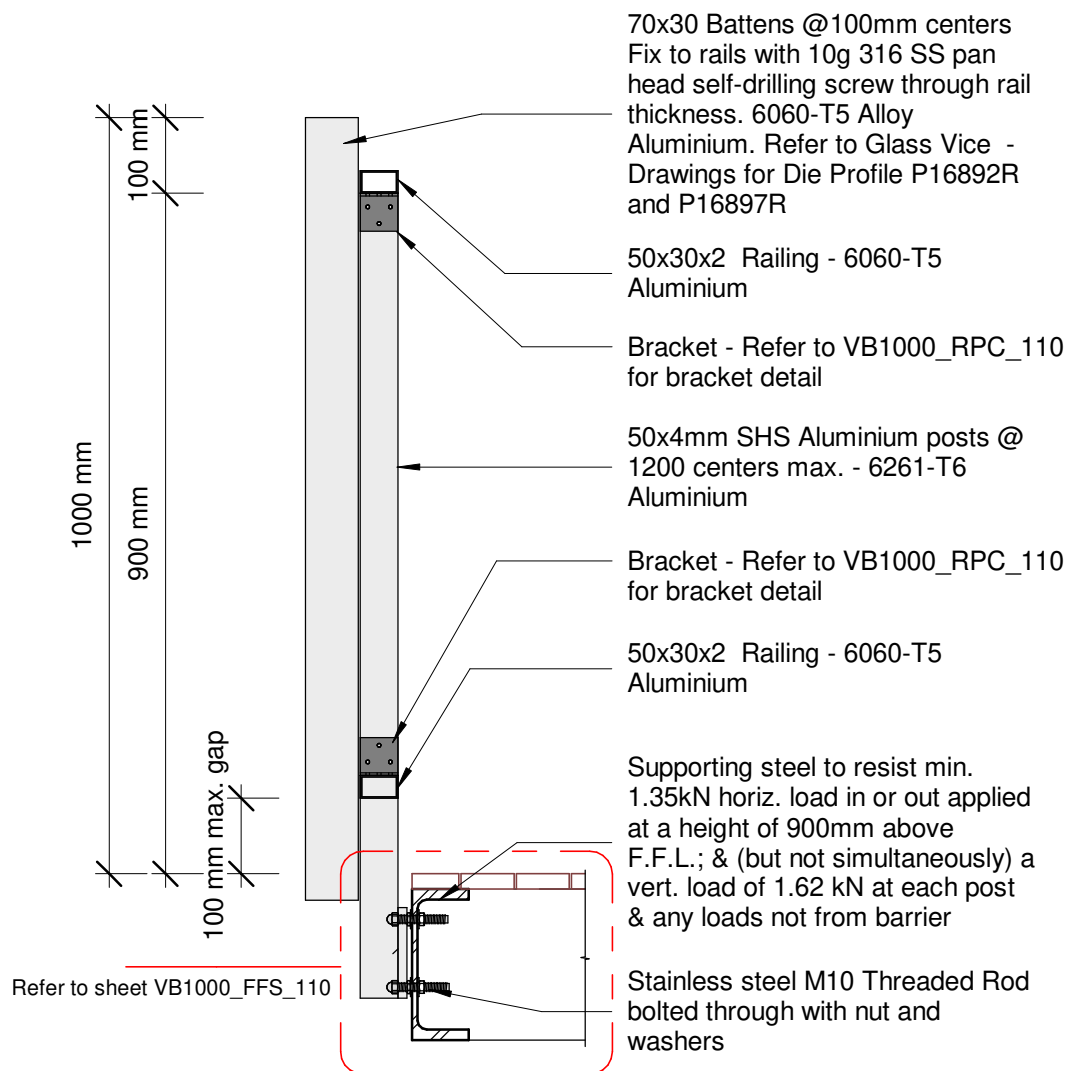
1000mm High Face Fixed into Concrete

Section - Face Fix Concrete 1M Residential Barrier

Date: 10 April 2019
Scale: 1 : 10
Issue 01

www.glassvice.com
Phone +64 9 414 6565
info@glassvice.com

VB1000_140



Plot Date: 22 May 2019 13:31

© 2019. The copyright of this document is the property of Glass Vice Limited and shall not be reproduced, copied, loaned or disposed of directly, or indirectly, nor used for any purpose other than that for which it is specifically furnished without prior consent.

All dimensions in millimetres

GLASS
VICE

Vertical Battens

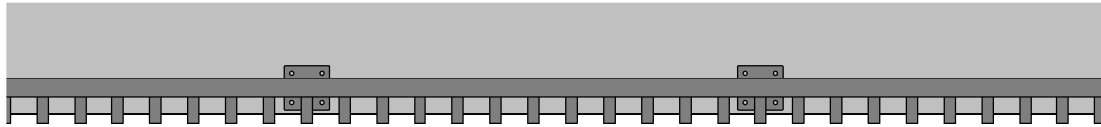
1000mm High Face Fixed into Steel Beam

Section - Face Fix Steel Beam 1M Residential Barrier

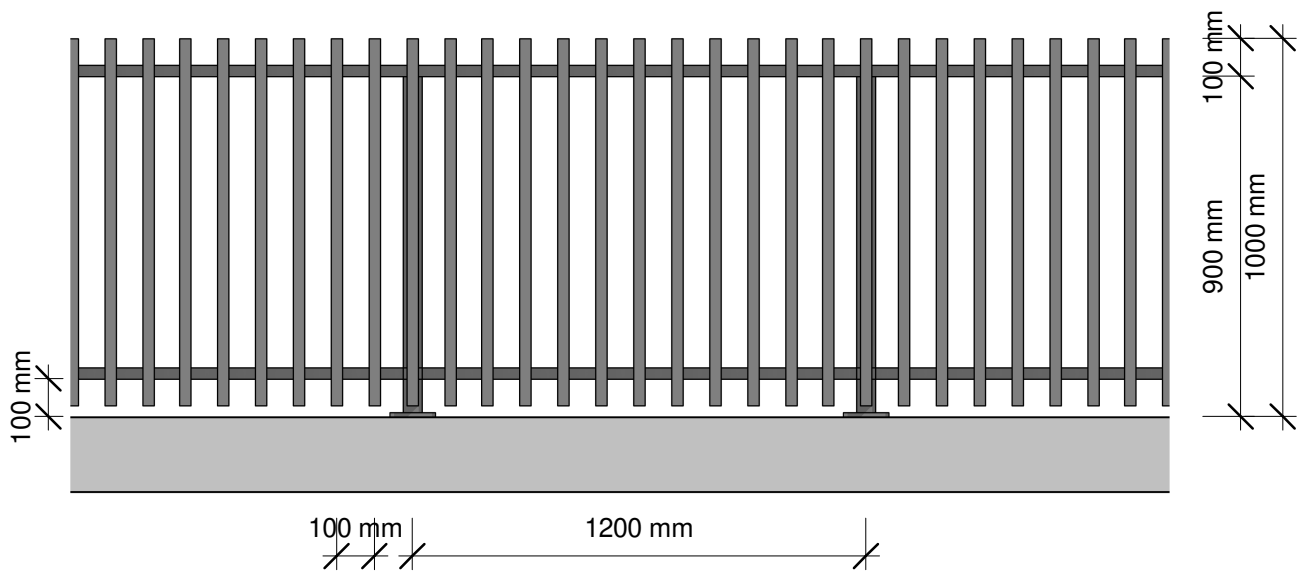
Date: 10 April 2019
Scale: 1 : 10
Issue 01

www.glassvice.com
Phone +64 9 414 6565
info@glassvice.com

VB1000_150



Plan



Elevation

Plot Date: 22 May 2019 13:31

© 2019. The copyright of this document is the property of Glass Vice Limited and shall not be reproduced, copied, loaned or disposed of directly, or indirectly, nor used for any purpose other than that for which it is specifically furnished without prior consent.

All dimensions in millimetres



Vertical Battens

1000mm High Top Fixed

Elevation - Top Fix 1M Residential Barrier

Date: 10 April 2019

Scale: 1 : 20

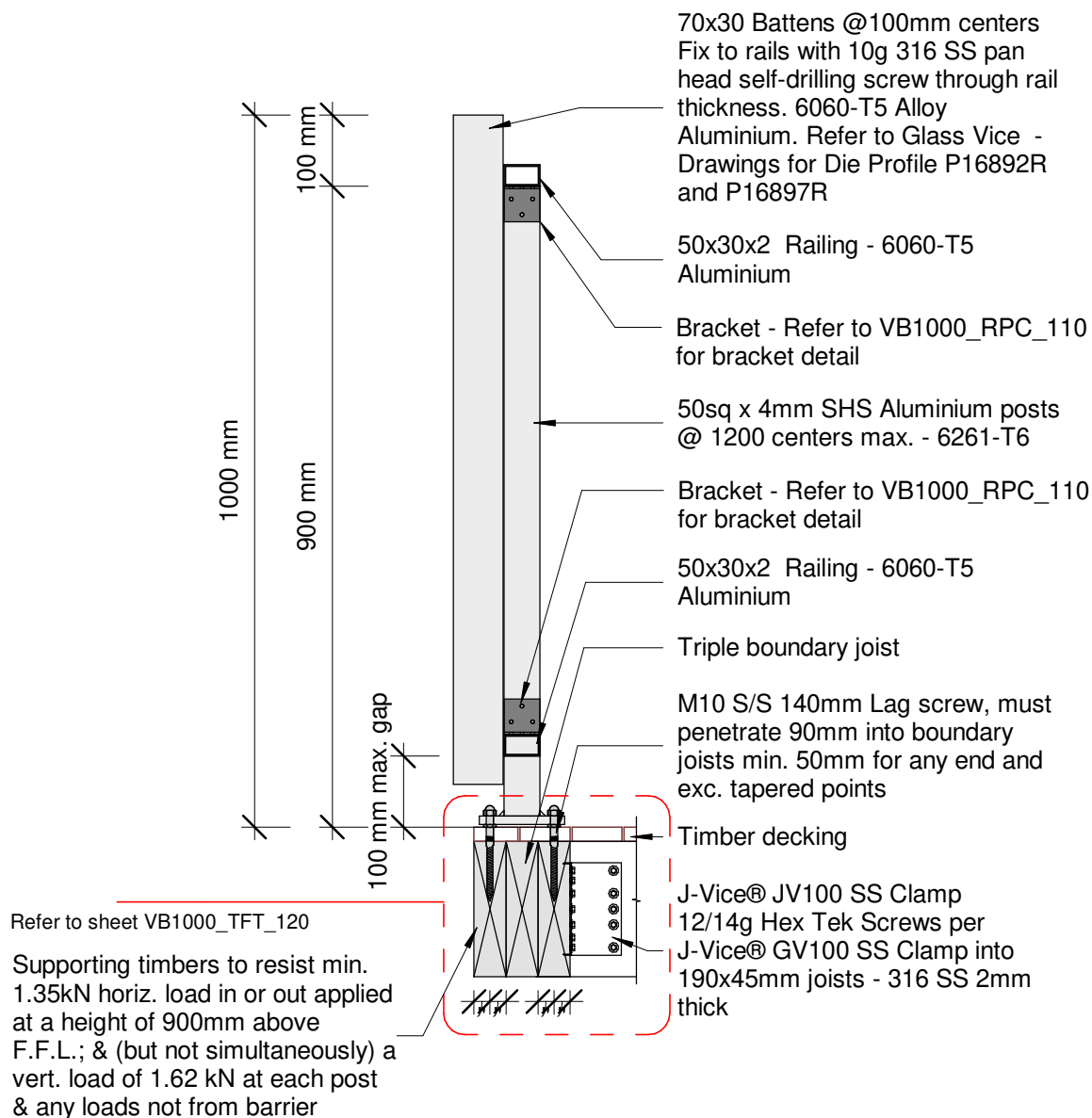
Issue 01

www.glassvice.com

Phone +64 9 414 6565

info@glassvice.com

VB1000_240



Plot Date: 22 May 2019 13:31

© 2019. The copyright of this document is the property of Glass Vice Limited and shall not be reproduced, copied, loaned or disposed of directly, or indirectly, nor used for any purpose other than that for which it is specifically furnished without prior consent.

All dimensions in millimetres

GLASS
VICE®

Vertical Battens

1000mm High Top Fixed into Timber

Section - Top Fix 190 Triple Joist 1M Residential Barrier

Date: 10 April 2019

Scale: 1 : 10

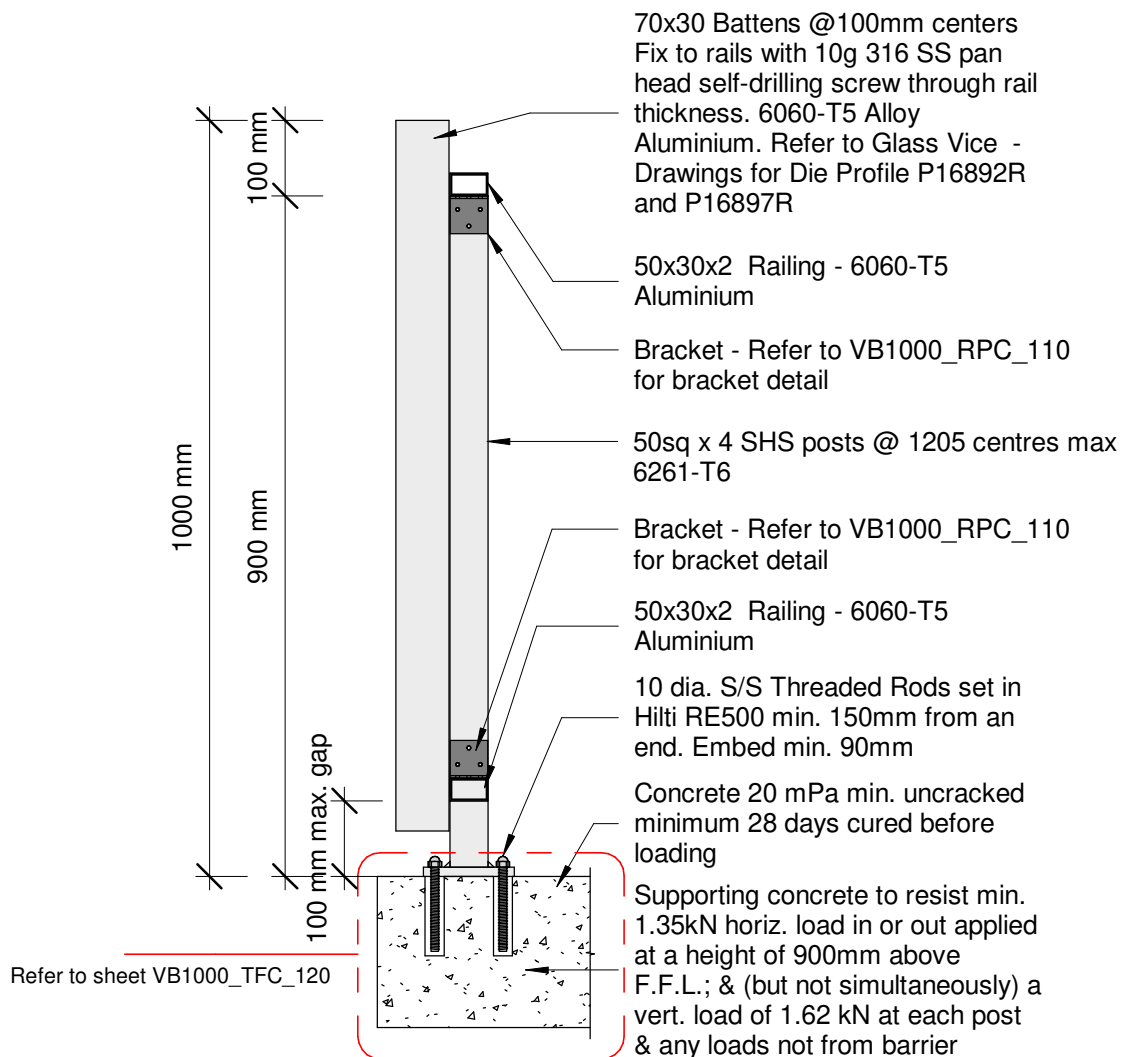
Issue 01

www.glassvice.com

Phone +64 9 414 6565

info@glassvice.com

VB1000_250



Plot Date: 22 May 2019 13:31

© 2019. The copyright of this document is the property of Glass Vice Limited and shall not be reproduced, copied, loaned or disposed of directly, or indirectly, nor used for any purpose other than that for which it is specifically furnished without prior consent.

All dimensions in millimetres

GLASS
VICE

Vertical Batts

1000mm High Top Fixed into Concrete

Section - Top Fix Concrete 1M Residential Barrier

Date: 10 April 2019
Scale: 1 : 10
Issue 01

www.glassvice.com
Phone +64 9 414 6565
info@glassvice.com

VB1000_260

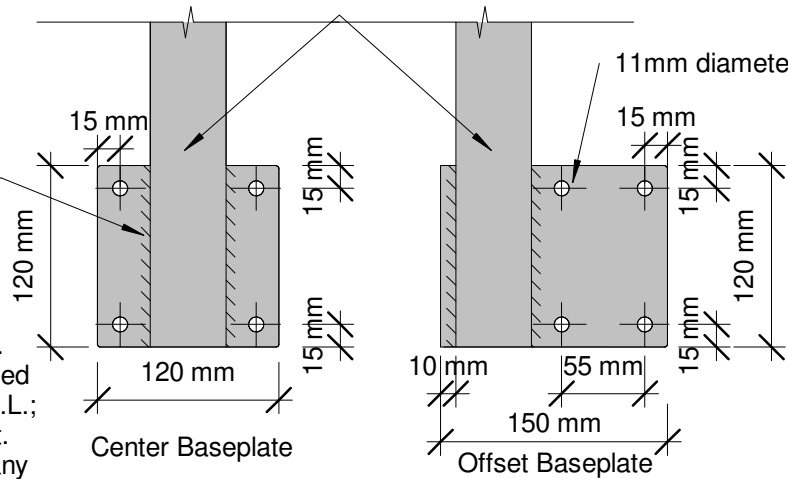
12mm Baseplate - 5083-H321,
H116 Alloy Aluminium 120mm long
6mm fillet weld (leg size, equal)
each side of post with 5356 alloy

Note

Supporting timbers to resist min.
1.35kN horiz. load in or out applied
at a height of 900mm above F.F.L.;
& (but not simultaneously) a vert.
load of 1.62 kN at each post & any
loads not from barrier

50x4mm SHS Aluminium Post

11mm diameter holes



Center Baseplate

Offset Baseplate

50x4mm SHS Aluminium posts @
1200 centers max. - 6261-T6
Aluminium

Dome nut SS M10

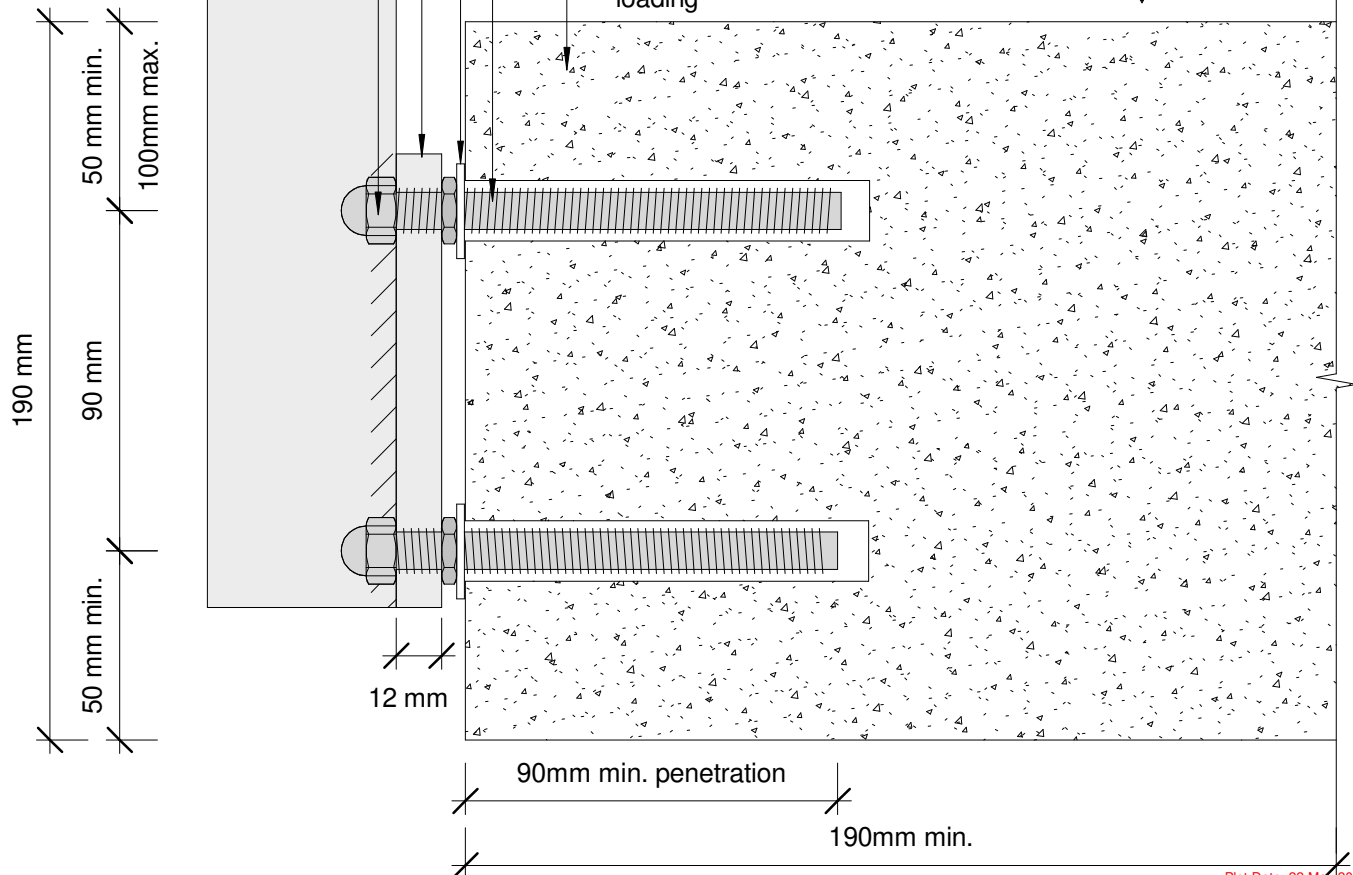
12mm Baseplate - 5083-H321,
H116 Alloy Aluminium 120mm long
6mm fillet weld (leg size, equal)
each side of post with 5356 alloy

M10x25 SS Standoff

10 dia. S/S threaded rods set in
Hilti RE500-V3. Min. 50mm from
top/bottom edge and min. 150mm
from ends. Embedded 90mm min.
into clean hole to Hilti specification

Concrete 20 mPa min. uncracked
minimum 28 days cured before
loading

F.F.L.



Plot Date: 22 May 2019 13:31

© 2019. The copyright of this document is the property of Glass Vice Limited and shall not be reproduced, copied, loaned or disposed of directly, or indirectly, nor used for any purpose other than that for which it is specifically furnished without prior consent.

All dimensions in millimetres

GLASS
VICE

Vertical Battens

1000mm High Face Fixed into Concrete

Detail - Face Fix Concrete 1M Residential Barrier

Date: 10 April 2019

Scale: As indicated

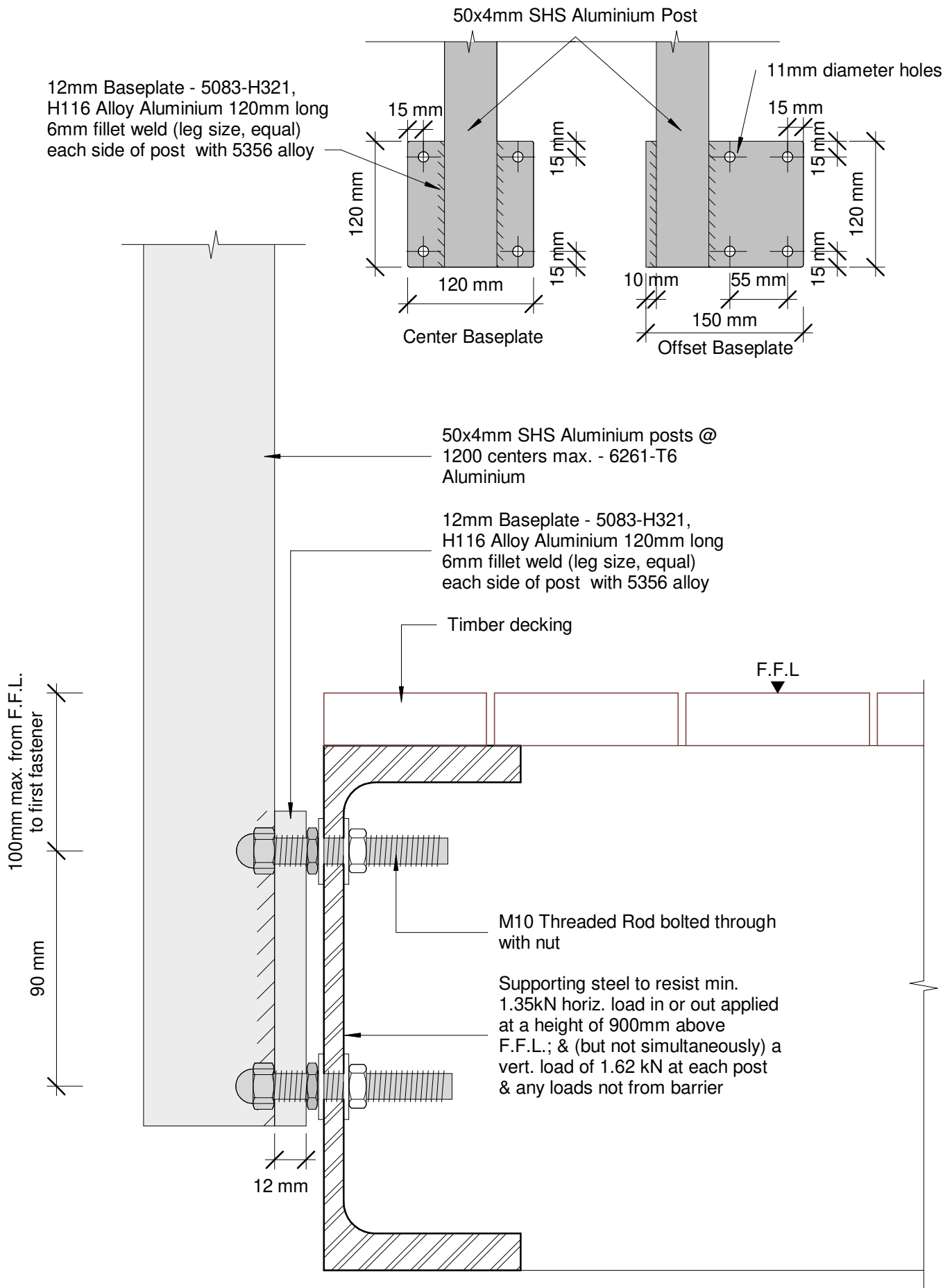
Issue 01

www.glassvice.com

Phone +64 9 414 6565

info@glassvice.com

VB1000_FFC_140



Plot Date: 22 May 2019 13:31

© 2019. The copyright of this document is the property of Glass Vice Limited and shall not be reproduced, copied, loaned or disposed of directly, or indirectly, nor used for any purpose other than that for which it is specifically furnished without prior consent.

All dimensions in millimetres

GLASS
VICE

Vertical Battens

1000mm High Face Fixed into Steel Beam

Detail - Face Fix Steel Beam 1M Residential Barrier

Date: 10 April 2019

Scale: As indicated

Issue 01

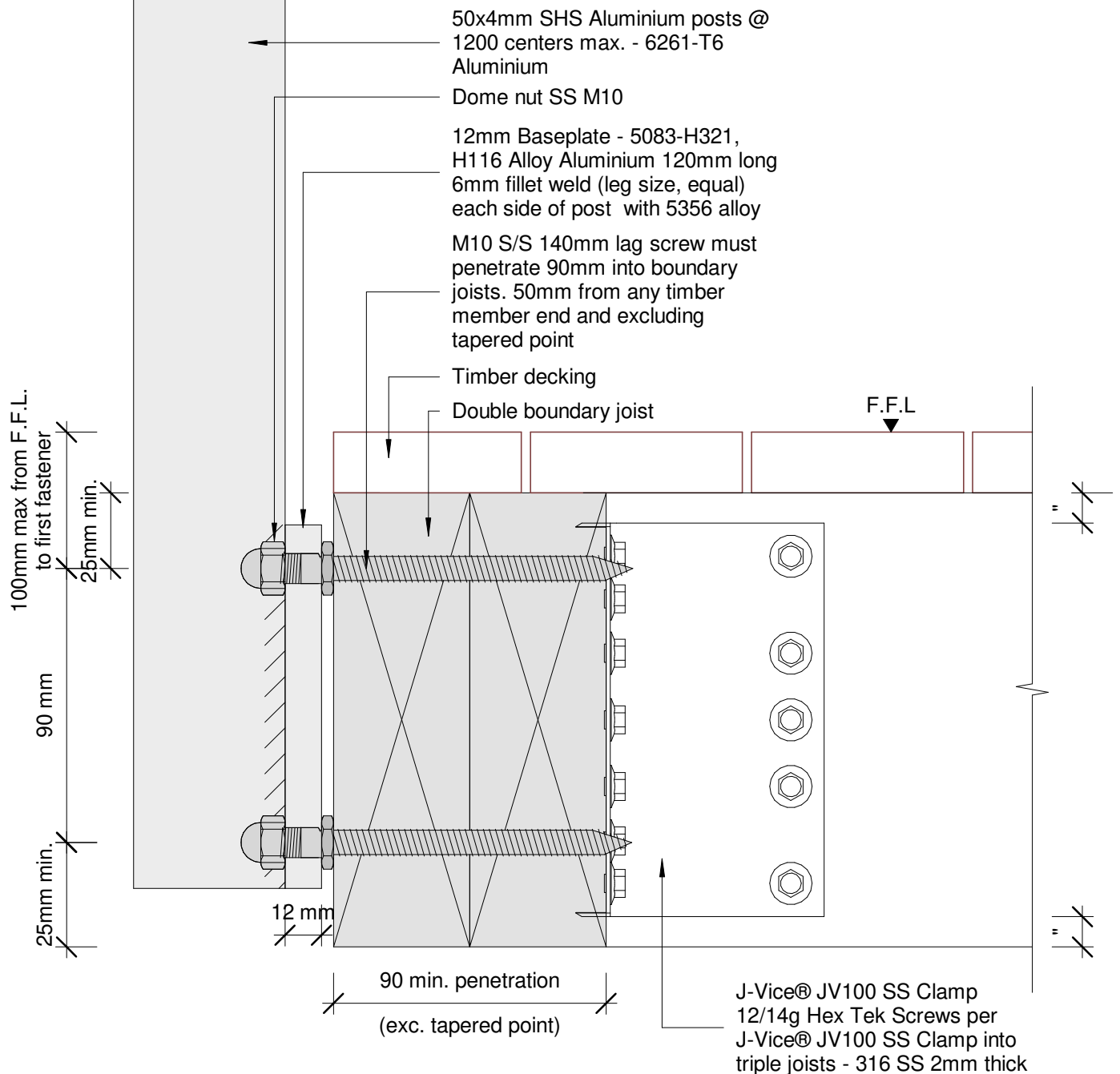
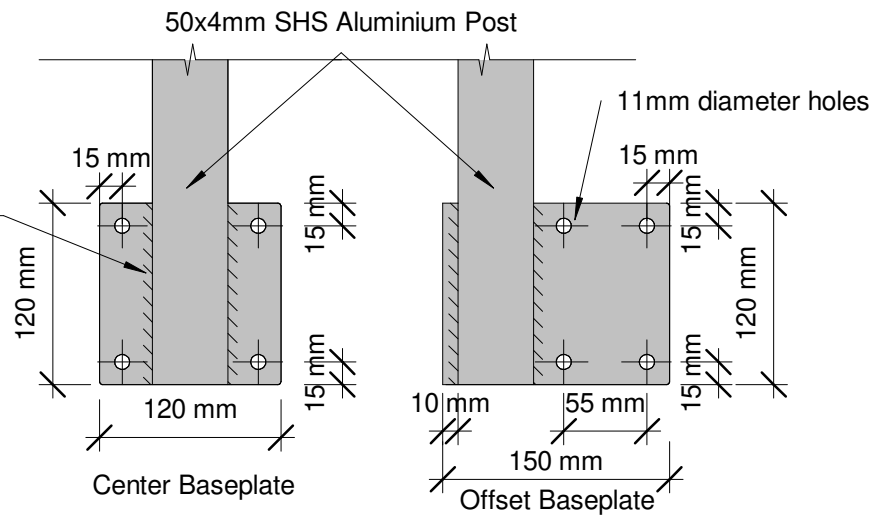
www.glassvice.com

Phone +64 9 414 6565

info@glassvice.com

VB1000_FFS_110

12mm Baseplate - 5083-H321,
H116 Alloy Aluminium 120mm long
6mm fillet weld (leg size, equal)
each side of post with 5356 alloy



Plot Date: 22 May 2019 13:31

© 2019. The copyright of this document is the property of Glass Vice Limited and shall not be reproduced, copied, loaned or disposed of directly, or indirectly, nor used for any purpose other than that for which it is specifically furnished without prior consent.

All dimensions in millimetres



Vertical Battens

1000mm High Face Fixed into Timber

Detail - Face Fix 140 Double Joist 1M Residential Barrier

Date: 10 April 2019

Scale: As indicated

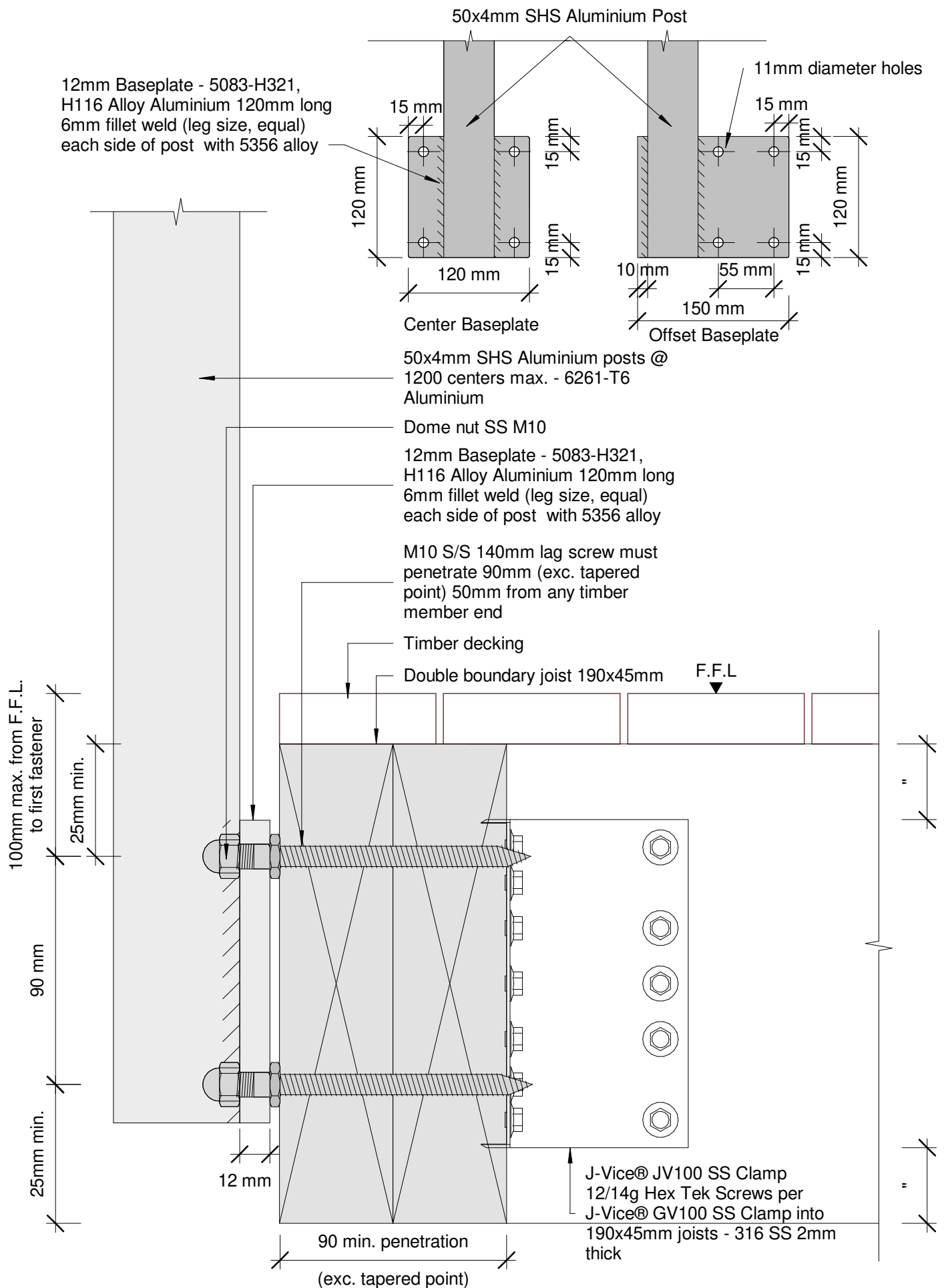
Issue 01

www.glassvice.com

Phone +64 9 414 6565

info@glassvice.com

VB1000_FFT_110



Plot Date: 22 May 2019 13:31

© 2019. The copyright of this document is the property of Glass Vice Limited and shall not be reproduced, copied, loaned or disposed of directly, or indirectly, nor used for any purpose other than that for which it is specifically furnished without prior consent.

All dimensions in millimetres



Vertical Battens

1000mm High Face Fixed into Timber

Detail - Face Fix 190 Double Joist 1M Residential Barrier

Date: 10 April 2019

Scale: As indicated

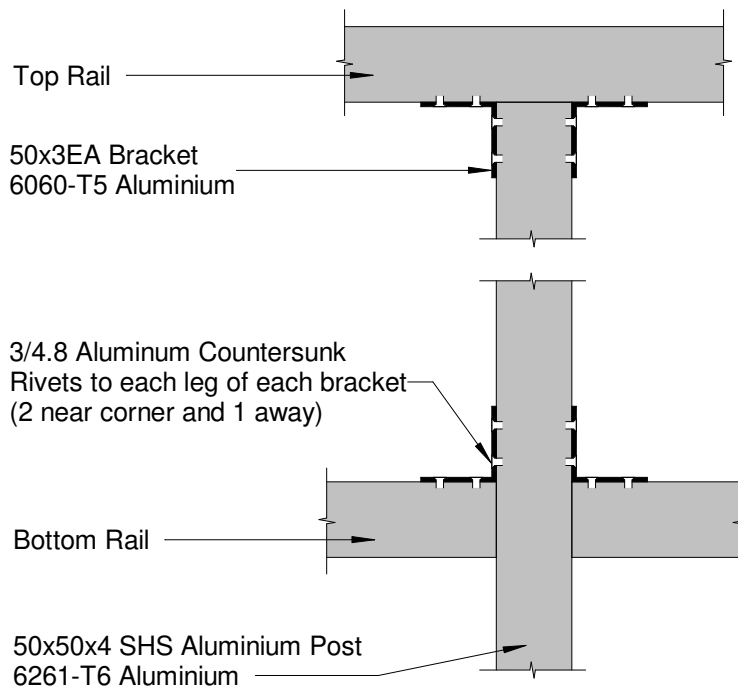
Issue 01

www.glassvice.com

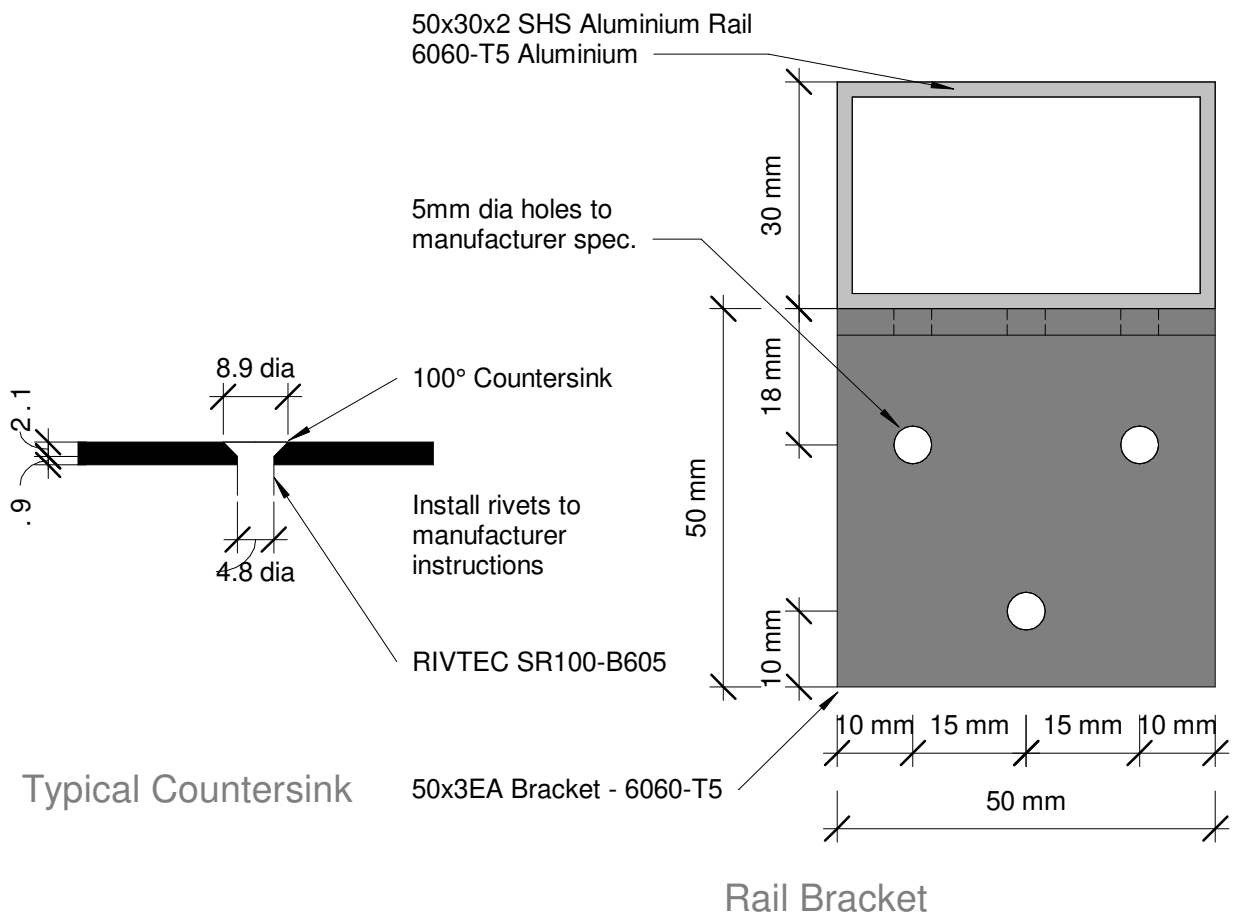
Phone +64 9 414 6565

info@glassvice.com

VB1000_FFT_120



Rail - Post Connection



Plot Date: 22 May 2019 13:31

© 2019. The copyright of this document is the property of Glass Vice Limited and shall not be reproduced, copied, loaned or disposed of directly, or indirectly, nor used for any purpose other than that for which it is specifically furnished without prior consent.

All dimensions in millimetres

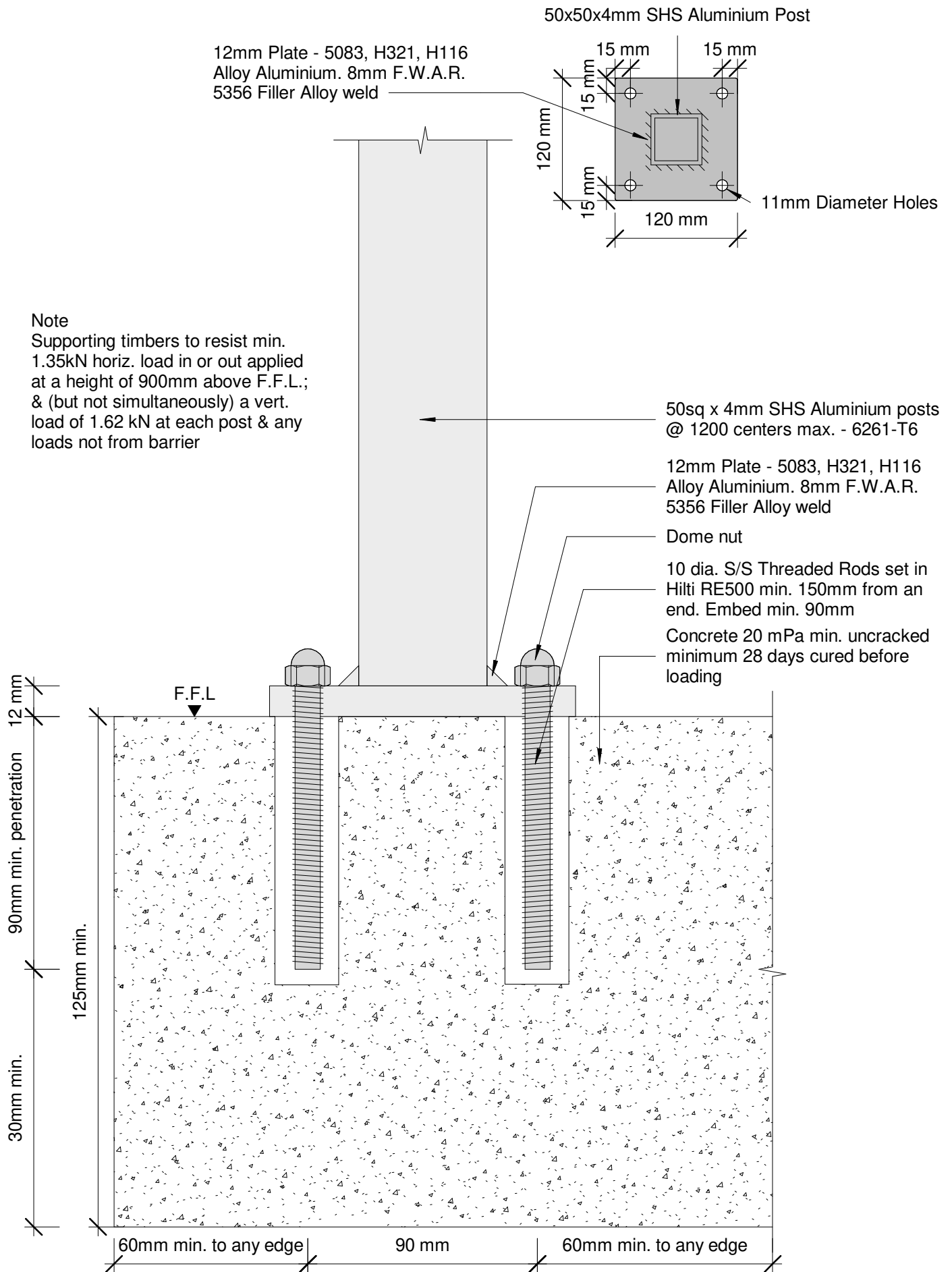


Vertical Battens
Top/Side Fix 1000mm
Detail - Rail - Post Connection

Date: 10 April 2019
Scale: As indicated
Issue 01

www.glassvice.com
Phone +64 9 414 6565
info@glassvice.com

VB1000_RPC_110



Plot Date: 22 May 2019 13:31

© 2019. The copyright of this document is the property of Glass Vice Limited and shall not be reproduced, copied, loaned or disposed of directly, or indirectly, nor used for any purpose other than that for which it is specifically furnished without prior consent.

All dimensions in millimetres



Vertical Battens

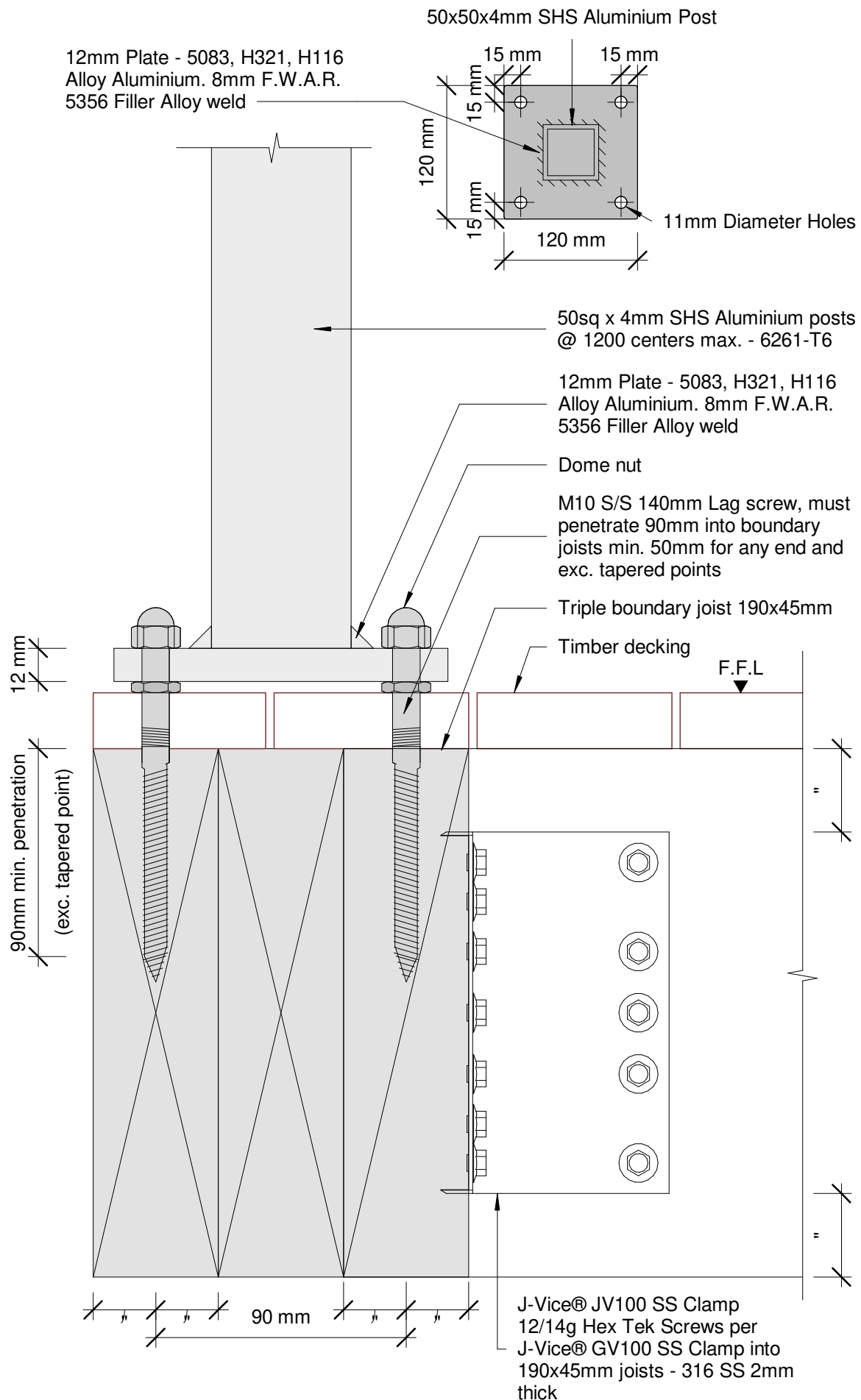
1000 High Top Fixed into Concrete

Detail - Top Fix Concrete 1M Residential Barrier

Date: 10 April 2019
Scale: As indicated
Issue 01

www.glassvice.com
Phone +64 9 414 6565
info@glassvice.com

VB1000_TFC_120



Plot Date: 22 May 2019 13:31

© 2019. The copyright of this document is the property of Glass Vice Limited and shall not be reproduced, copied, loaned or disposed of directly, or indirectly, nor used for any purpose other than that for which it is specifically furnished without prior consent.

All dimensions in millimetres



Vertical Battens

1000mm High Top Fixed into Timber

Detail - Top Fix 190 Triple Joist 1M Residential Barrier

Date: 10 April 2019

Scale: As indicated

Issue 01

www.glassvice.com

Phone +64 9 414 6565

info@glassvice.com

VB1000_TFT_120