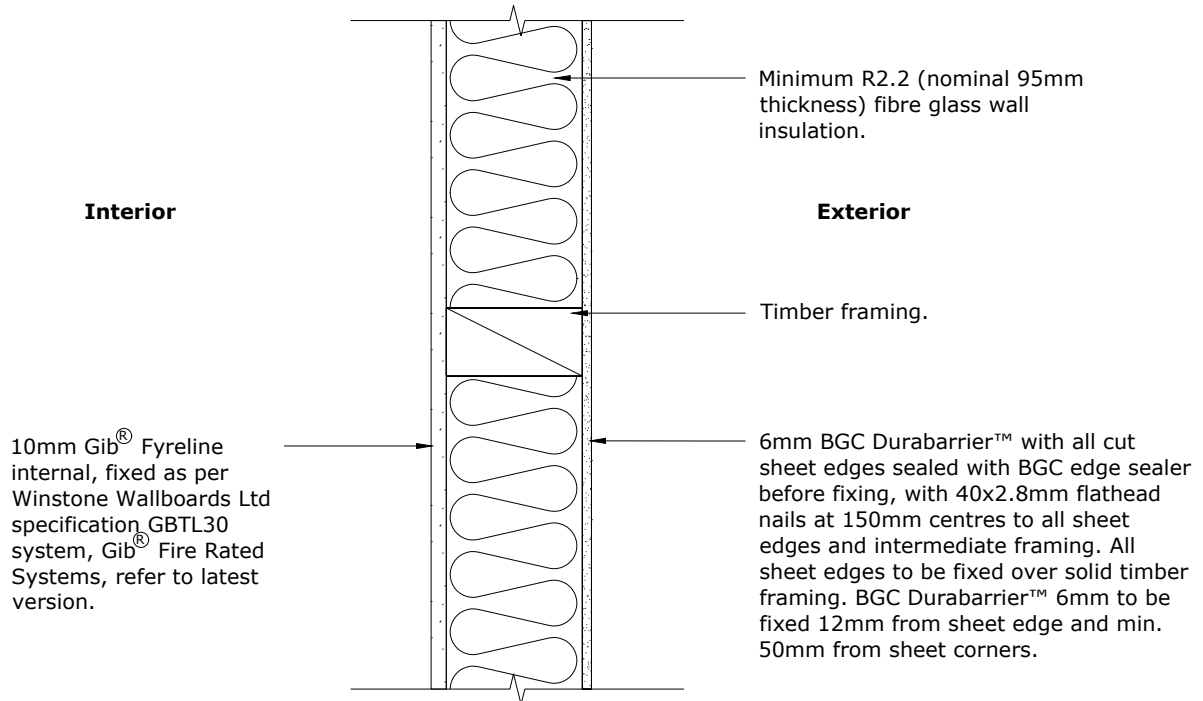




Fibre Cement



FIRE RATING NOTE:
REFER TO FIRE RATING SECTION IN BGC 6mm DURABARRIER™ PRODUCT LITERATURE FOR FURTHER FIRE RATING DETAILS

TIMBER FRAMING:
TIMBER FRAMING TO BE MINIMUM 90mm DEEP x 45mm WIDE, IN ACCORDANCE WITH NZS3604. STUD AT MAXIMUM 600mm CENTERS. NOGGINGS AT MAXIMUM 800mm CENTERS. DOUBLE OR STAGGERED STUDS MAY BE USED.

LOADINGS: MAXIMUM LOAD PER STUD, AS PER TABLE BELOW:

ULTIMATE STRENGTH(kN PER STUD) FOR FIRE EMERGENCY LOADING FOR 30 MINUTES.

ACTUAL STUD SIZE (mm)	Wall Height (m)								
	2.4	2.7	3.0	3.3	3.6	3.9	4.2	4.5	4.8
90 x 45	10.5	8.8	7.4	6.2	5.3	4.4	3.7	3.2	2.6
140 x 45	31.6	28.6	25.7	23.0	20.5	18.3	16.3	14.5	12.9

PROFILE BGC DurabARRIER™ 6mm

DATE Aug 2018

DETAIL 30/30/30 Fire Rating Detail

SCALE 1:5 @ A4

DETAIL NO. DB23