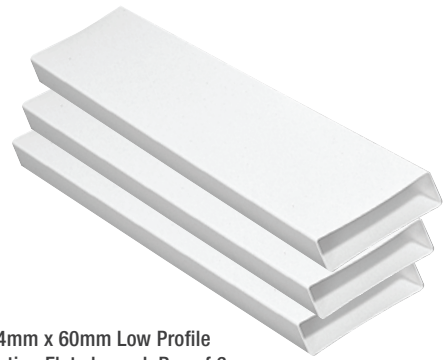


# MANROSE LOW PROFILE DUCTING

## FLAT CHANNEL

### MANROSE LOW PROFILE DUCTING- FLAT CHANNEL

(M) = Male  
(F) = Female



204mm x 60mm Low Profile  
Ducting Flat channel. Box of 6

Dimension (mm)	Equivalent Size (mm)	Length (m)	Order Code
110 x 54	100	1.5	DCT0013 (M)
204 x 60	125	1.5	DCT0519 (M)
220 x 90	150	1.5	DCT1443 (M)
300 x 25	100	1.5	DCT1460 (M)

Low profile ducting enables it to be concealed when installed along the top of wall units. It can also be fitted in ceiling voids and cavity walls, providing versatility whilst remaining unobtrusive. All Manrose system parts and channels are made from flame-retardant material.

#### Four Low Profile System Sizes

##### 110mm x 54mm:

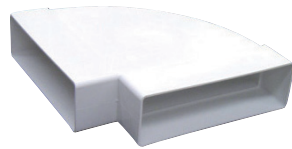
Suitable for applications requiring low extraction rates, such as ventilation of domestic bathrooms and toilets.

With a 5940mm<sup>2</sup> cross-section it provides efficient ducting for short, straight runs connecting to a 100mm round spigot.



#### LOW PROFILE CONNECTORS

Dimension (mm)	Order Code
110 x 54	DCT0014 (F)
204 x 60	DCT0520 (F)
220 x 90	DCT1442 (F)
300 x 25	DCT1459 (F)



#### HORIZONTAL 90° BENDS

Dimension (mm)	Order Code
110 x 54	DCT0125 (F)
204 x 60	DCT0524 (F)
220 x 90	DCT1448 (F)
300 x 25	DCT2097 (F)



#### VERTICAL 90° BENDS

Dimension (mm)	Order Code
110 x 54	DCT0126 (F)
204 x 60	DCT0525 (F)
220 x 90	DCT1447 (F)
300 x 25	DCT2099 (F)



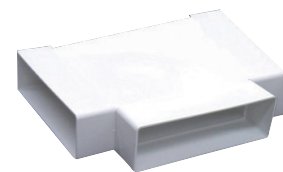
#### HORIZONTAL 45° BEND

Dimension (mm)	Order Code
220 x 90	DCT2701 (F)
300 x 25	DCT2098 (F)



#### VERTICAL 45° BEND

Dimension (mm)	Order Code
220 x 90	DCT2700 (F)
300 x 25	DCT1455 (F)



#### HORIZONTAL T-PIECE CONNECTORS

Dimension (mm)	Order Code
110 x 54	DCT1479 (F)
204 x 60	DCT1114 (F)
220 x 90	DCT3126 (F)

# MANROSE LOW PROFILE DUCTING

## DUCT FITTINGS



### SHORT ADAPTER RECTANGULAR: ROUND

Dimension (mm)	Order Code
110 x 54 : 100	DCT0127 (F)
110 x 54 : 100	DCT0131 (M)

(M) = Male  
(F) = Female



### ADAPTERS RECTANGULAR: ROUND

Dimension (mm)	Order Code
110 x 54 : 100	DCT1482 (F)
204 x 60 : 125	DCT0526 (F)
220 x 90 : 150	DCT1446 (F)
300 x 25 : 100	DCT1461 (F)



### FLAT CHANNEL REDUCERS

Dimension (mm)	Order Code
110 x 54:204 x 60	DCT0136 (F)
204 x 60:220 x 90	DCT1452 (F)
300 x 25:204 x 60	DCT1456 (F)

Designed to fit 204 x 60mm flat channel or airbrick.



### ELBOW BENDS 100mm

Dimension (mm)	Order Code
110 x 54	DCT0124 (M)
110 x 54	DCT0015 (F)
204 x 60	DCT0521 (F)
220 x 90	DCT1444 (F)
300 x 25	DCT2095 (F)

(m) = Male (f) = Female



### ELBOW BENDS 125mm

Dimension (mm)	Order Code
204 x 60	DCT0522 (F)
220 x 90	DCT1440* (F)
300 x 25	DCT2096 (F)

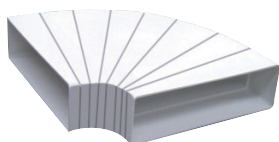
\*Rotating offset spigot



### ELBOW BENDS 150mm

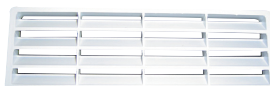
Dimension (mm)	Order Code
204 x 60	DCT0523 (F)
220 x 90	DCT1441* (F)

\*Rotating offset spigot



### HORIZONTAL BEND ADJUSTABLE

Dimension (mm)	Order Code
204 x 60	DCT1480 (F)



### HORIZONTAL AIRBRICK INSERT

Dimension (mm)	Order Code
204 x 60	DCT0137 (M)

Duct connection requires the following Reducer or Connector:

110 x 54: requires: DCT0136  
204 x 60: requires: DCT0520



### VERTICAL AIRBRICK INSERT

Dimension mm)	Order Code
204 x 60	DCT1414 (F)

Comes complete with duct connector DCT0520.

# MANROSE LOW PROFILE DUCTING

## DUCT FITTINGS



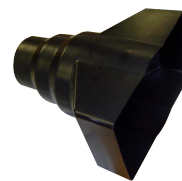
**DOUBLE AIRBRICK**

Dimension (mm)	Order Code
232 x 138	DCT1450 (F)



**DOUBLE AIRBRICK ADAPTOR**

Dimension (mm)	Order Code
220 x 90:232 x 138	DCT1451 (M/F)



**DOUBLE AIRBRICK REDUCER**

Dimension (mm)	Order Code
235 x 140	DCT1453 (M)



**WALL/CEILING PLATES ROUND**

Dimension (mm)	Order Code
155 x 155 : 104 ø	DCT0148
170 x 170 : 130 ø	DCT0149
200 x 200 : 160 ø	DCT0150



**WALL/CEILING PLATES RECTANGULAR**

Dimension (mm)	Order Code
155 x 155 : 110 x 55	DCT0016
264 x 118 : 206 x 60	DCT0528



**EXTERNAL TUBE GRILLE**

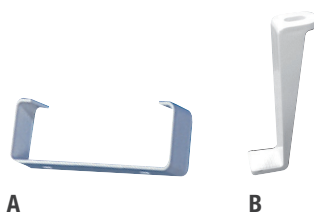
Diameter (mm)	Order Code
100	DCT2206

Designed to fit directly into round solid tube, for systems ducted straight through an external wall.



**EXTERNAL LOUVRED GRILLES**

Diameter (mm)	Order Code
100	DCT2200
125	DCT2201
150	DCT2202



**FLAT CHANNEL CLIPS**

Dimension (mm)	Order Code
110 x 54 (A)	DCT0134
204 x 60 (A)	DCT0527
220 x 90 (B)	DCT1445*
300 x 25 (B)	DCT1458*

\*2 clips are required to secure ducting.