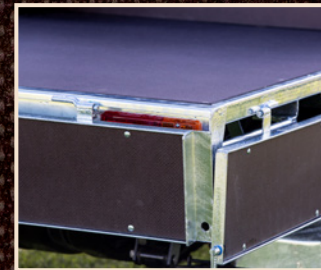


PRODUCT OVERVIEW

Euro Gripdeck (Anti-slip) is a European-made, Euro Birch *Betula pendula* core exterior plywood, with a fantastic non slip surface. Designed for the transport industry, it has a highly durable, phenolic surface that's dark brown with a wire mesh pattern. Extremely popular with engineers in New Zealand, it comes into its own for the ute deck and vehicle fit-out industry, combining high-wear resistance with value-adding visual appeal.

USES

- ◆ Ute decks, Trailers
- ◆ Scaffold Systems, Truck Decks,
- ◆ Exterior Walkways, Stadium Seating
- ◆ Stair Treads, Oversized Formply
- ◆ Vehicle Fit-out Systems, Mezzanine Floors



Hardworking Euro Gripdeck gets tough. Left: Wilpro Engineering ute deck, Wanganui. Above: Detail, of the ute deck corner.

SPECIFICATIONS

Sheet Size	Sheet Thickness	Weight	Grading
2440x1220	12mm, 15mm, 18mm and 21mm	660kg/m ³	Wire Mesh/Smooth
2440x1525	12mm, 15mm, 18mm and 21mm	660kg/m ³	Wire Mesh/Smooth
2440x1850	12mm, 15mm, 18mm and 21mm	660kg/m ³	Wire Mesh/Smooth
3050x1525	12mm, 15mm and 18mm	660kg/m ³	Wire Mesh/Smooth
3650x1850	12mm and 18mm	660kg/m ³	Small Wire Mesh /Smooth

Overlay	Phenolic Film 220/120g/m ² , 700/5000 Taber Rev./Rolling Wear, Wire Mesh Pattern
Material	European Multiply Birch, Edge Sealed Exterior
Glue Bond	WBP EN314-2 Class3, DIN68705-3/BFUI00, BS6566part8, Phenolic Resin Adhesive
Certification	WBP EN314-2 Class3, DIN68705-3/BFUI00, BS6566part8, Phenolic Resin Adhesive
Formaldehyde	Below ClassI (<3.5mg/(2*h)), apx 0.2mg/(2*h), to EN 717-2

SPECIFICATIONS

Euro Gripdeck Ultimate exterior vehicle decking ply

Code	Size	Thickness	Info	Grade
FI040-A	2440 x 800	18mm	220/Lge Wire	Anti-slip/smooth
FI030	2440 x 1220	12mm	220/Lge Wire	Anti-slip/smooth
FI036	2440 x 1220	15mm	220/Lge Wire	Anti-slip/smooth
FI041	2440 x 1220	18mm	220/Lge Wire	Anti-slip/smooth
FI046	2440 x 1220	21mm	220/Lge Wire	Anti-slip/smooth

Euro Gripdeck – 1525 Wide

Code	Size	Thickness	Info	Grade
FI031	2440 x 1525	12mm	220/Lge Wire	Anti-slip/smooth
FI038	2440 x 1525	15mm	220/Lge Wire	Anti-slip/smooth
FI042	2440 x 1525	18mm	220/Lge Wire	Anti-slip/smooth
FI047	2500 x 1525/00	21mm	220/Lge Wire	Anti-slip/smooth
FI032	3050 x 1525	12mm	220/Lge Wire	Anti-slip/smooth
FI037	3050 x 1525	15mm	220/Lge Wire	Anti-slip/smooth
FI043	3050 x 1525	18mm	220/Lge Wire	Anti-slip/smooth

Euro Gripdeck Supersizes – 1850 Wide

Code	Size	Thickness	Info	Grade
FI036-L	2440 x 1850	12mm	220/Lge Wire	Anti-slip/smooth
FI037-L	2440 x 1850	15mm	220/Lge Wire	Anti-slip/smooth
FI041-L	2440 x 1850	18mm	220/Lge Wire	Anti-slip/smooth
FI046-L	2440 x 1850	21mm	220/Sml Wire	Anti-slip/smooth

Euro Gripdeck Kingsize – 1850 Wide

Code	Size	Thickness	Info	Grade
FI032-A	3050 x 1850	12mm	220/Sml Wire	Anti-slip/smooth
FI032-S	3650 x 1850	12mm	220/Sml Wire	Anti-slip/smooth
FI043-A	3050 x 1850	18mm	220/Sml Wire	Anti-slip/smooth
FI043-S	3650 x 1850	18mm	220/Sml Wire	Anti-slip/smooth
FI045	3650 x 2000	18mm	220/Sml Wire	Anti-slip/smooth

HANDLING & APPLICATION INFORMATION

It is critical with Euro Gripdeck that all cut edges are sealed and if possible a sealant is applied to any joints and edges where moisture will sit. Plywood is a natural product that can be affected by changes in weather conditions: moisture and temperature. Increased moisture content or temperature variation may cause internal stresses causing previously flat sheets to bow. At Plymasters, precautions are taken to minimize this effect. However, once the plywood has left our warehouse we cannot guarantee sheets to remain flat unless fastened. When storing panels, stack on a firm raised base with enough support to prevent sagging. Cover the pallet to protect top and edges.