

Dulux[®]

Acra^{te}x[®]

AcraShield[®] CONCRETE



The epitome of modernist style in a quality concrete surface

Add the venetian look to your project facade with Dulux® Acratex® AcraShield® Concrete. Create a modern industrial feature finish, exploiting the natural matt look of raw concrete.

Designed to achieve a smooth mottled effect when applied in multiple coats, *AcraShield* Concrete creates high and low build areas on each coat which present as a light and dark variegated finish.

AcraShield Concrete is flexible to your project requirements and is designed for long-term durability. It's compatible with a wide variety of substrates including masonry, concrete, compressed fibre cement and Gyprock®. *AcraShield* Concrete is best applied over a smooth surface, however it can be applied over fine rendered substrates where the granular pattern can influence the final appearance.

Due to the influence of the surface profile, a site sample applied to the actual project surface is recommended for confirmation of colour and finish.





Willemite



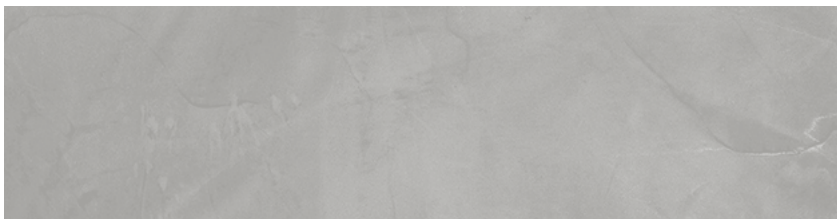
Silver Haze



Toasty White



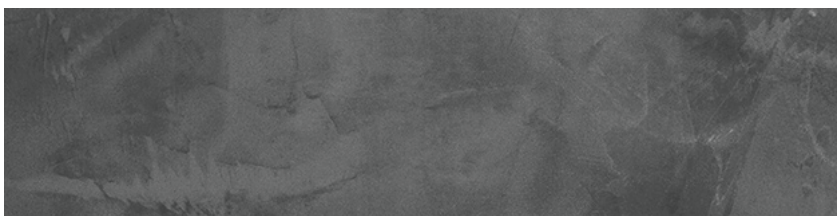
Grey Isle



Oatmeal Grey



Puppy Grey



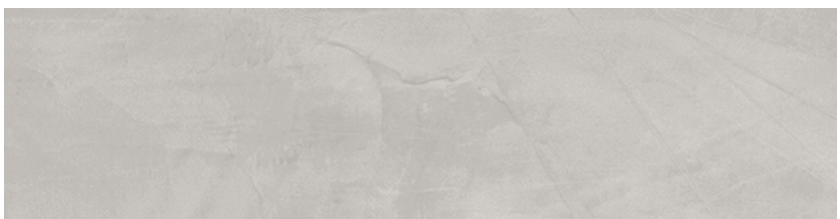
Delta Grey



Icy Blast



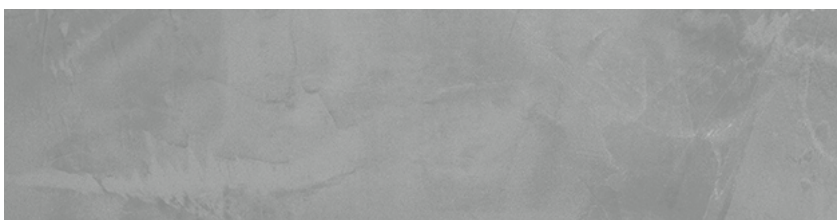
Blanch Grey



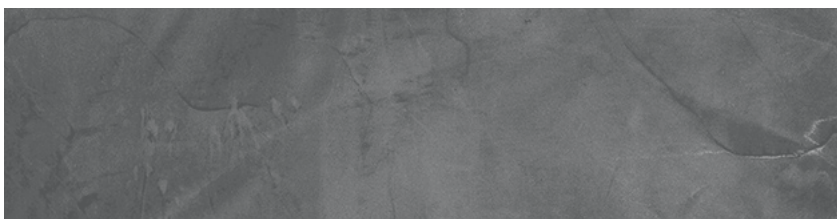
Cool Razz



Haskap



Ash Rock



Charcoal Night



Moonless



COLOUR IN CONCRETE

QUARTER TINT (QTB) LINE SHADE: 194X0602-15L

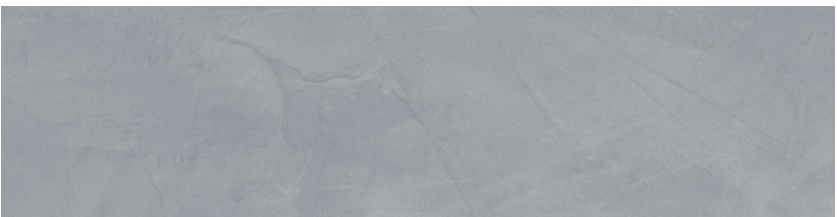
EXTRA BRIGHT TINT BASES (ETB) LINE SHADE 194X0603-15L

AcraShield® Concrete is available in Quarter Tint (QTB) and Extra Bright Tint Bases (ETB), catering for most Dulux® colours from light to dark tones.

Due to the bespoke application technique the final colour can vary depending on application, substrate and weather conditions. As the product creates light and dark areas, the mottled effect is best observed in mid greys through to darker colours, whilst lighter colours will produce a less noticeable effect.



Dulux Water Worn in AcraShield



AcraShield Concrete Igneous (colour matched to Water Worn)

Due to application techniques and the product attributes, the finished colour will achieve a mottle effect and appear slightly lighter.

HOW TO APPLY



FOR SUITABLY PREPARED SURFACES

Expressed joint fibre cement, primed flushed paper faced wall board, AAC, brick & blockwork and concrete panels that have been made flat and smooth.

STEP 1

Prime substrate with Dulux® Acratex® Green Render Sealer™ tinted to approximately the top coat colour.

STEP 2

Apply the first coat with an 18mm nap roller/ fine texture roller or venetian plaster trowel based on your preference. Apply to a spread rate of approximately 2-3m²/litre. Whilst wet, pattern material. Patterning can be done in a variety of different ways at the applicator's discretion including sponge finish. Allow 16 hours dry time between first and second coats.

STEP 3

Sand material with 320 grit sandpaper to remove peaks and de-dust surface. Apply a tight second coat with a venetian plaster trowel or spatula to a spread rate of approximately 15m²/litre. Allow 2 to 3 hours dry time between second and third coats.

STEP 4

Apply a tight third coat with a venetian plaster trowel or spatula to a spread rate of approximately 15m²/L.



FOR SLIGHTLY ROUGHER UNEVEN SURFACES

Slightly rougher rendered surfaces on AAC, brick & blockwork and concrete panels require additional surface preparation.

OPTION 1

Apply a smooth base coat of either *Dulux Acratex AcraPatch Smooth + 5% cement* or *Dulux Acratex RenderWall® Concrete Finish*. Then follow the four step system for suitably prepared surfaces.

OPTION 2

Apply a build coat of *AcraShield® Concrete* after priming with a medium texture roller to 2-3m²/L and pattern with a venetian plaster trowel or spatula.

Then follow from step two for application on suitably prepared surfaces.

TIPS TO IMPROVE OPEN TIME

The second and third coats, which are applied tightly have a significantly reduced open time compared to the first/pattern coat.

- Work in the morning when the temperature is cooler.
- Work in the shade.
- Apply an excess of product initially, to maintain the wet edge, before scraping it back to a tight coat when you are ready to move on.
- Work up and down the panel with a fine nap roller to apply the product and then use the trowel to scrape it back to a smooth finish.

Learn more at acratex.com.au
Acratex Customer Service **13 23 77**

Due to the influence of the surface profile, a site sample applied to the actual project surface is recommended for confirmation of colour and finish.

For further information refer to DuSpec® Product Data Sheet AU_DA02710.

Cover Image: Main feature wall, Concrete in Toasty White. Second level feature, Concrete in Silver Haze.

Colours shown are as close as possible to actual colours and finishes can vary depending on the application. Due to limitations of your display screen and the printing process, photographic and printed images and swatches may not represent the true colour. Refer to actual samples for exact colour and finish.

Dulux Acratex, 1 Jeanes Street, Beverley SA 5009. Dulux Acratex is a division of DuluxGroup (Australia) Pty Ltd. ABN 67 000 049 427. Dulux, Acratex, AcraShield, DuSpec and RenderWall are registered trade marks and Green Render Sealer is a trade mark of DuluxGroup (Australia) Pty Ltd. Gyprock is a trade mark of CSR Limited and under license.

