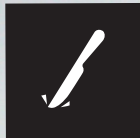




Anti-fingerprint



Scratch resistant



Heat resistant



Low light reflectivity



Anti-bacterial properties



Thermal healing



Polaris HPL – Super Matt

European Birch finished with a innovative solid 1mm through-colour matt laminate perfect for use in cafes, homes, schools and any commercial space.

FOOD SAFETY

Verification tests according to ISO 22196 / JIS Z 2801 conducted by an accredited laboratory to measure the antibacterial performance, demonstrate that the bacterial load is reduced by 99.9% after 24 hours. The structure with its high degree of cross-linking makes its surface compact and non-porous. This characteristic doesn't allow bacterial, fungal and / or micro-organisms colonies to penetrate and proliferate.

FINISHES

White, Dark Grey, Graphite, Black

DIMENSION

3000 x 1250mm – 19mm/13ply, 25mm/17ply

- Comes as a 3m length ideal for benchtops.
- ABS edging: 23mm or 42mm x 1mm – White and Black only

SCOPE OF USE

High-end joinery and furniture. Kitchen benchtops and cabinetry.

LIMITATIONS

For interior use only.

PERFORMANCE

Environment Protection Standard:
ISO 14001:2005

Quality Management Standard:
ISO 9001:2009

Food Safety Standard:
ISO 22196/JIS Z 2801

ULEF: No harmful emissions

FSC and PEFC Certified.

TECHNICAL SPECIFICATIONS

Standard – EN 636-2

Wood Raw Material – European Birch

Density – average 700kg/m³

Class – Hardwood, non-durable

Glue Bond – EN 314-3: Class 2 Exterior

Glue Formaldehyde Emissions – ULEF:

Ultra-Low Emitting Formaldehyde.

EDGING

Because the core is free of voids and is birch throughout, the exposed edges give a unique edge detail. No need to spend time and effort on applying edge tape or solid edge banding unless you want to. Simply sand and finish the edges.

FINISHING

ABS edging is available in black and white. If leaving the edge detail exposed, we advise to sand and aris all end grain before coating to help prevent moisture ingress and increase longevity.

HANDLING AND STORAGE

Plywood is a natural product that can be affected by changes in ambient weather conditions, causing previously flat sheets to bow or twist. All precautions are taken to minimise this effect, however once the plywood has left our warehouse we cannot guarantee sheets to remain flat.

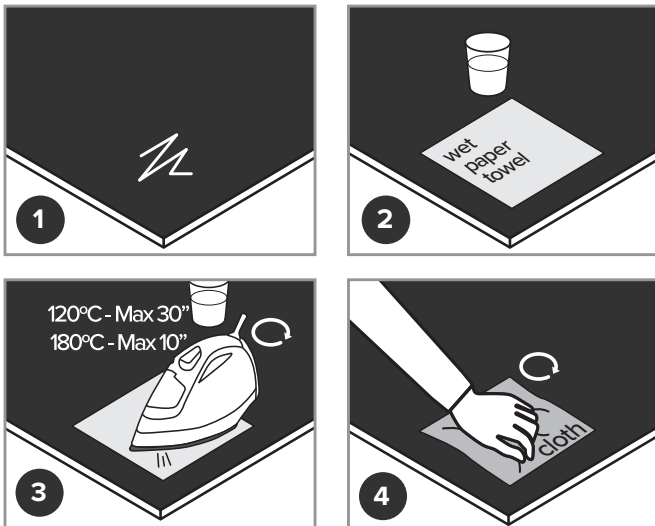
Avoid leaning sheets against walls. Store sheets where construction traffic and construction activity will not damage sheets. Keep the surface free of contaminants such as dust, oil and adhesives that will affect the surface finishes.

The storage area should be protected from sun, rain and wind to minimise rapid changes in temperature and humidity. Treat sheets as a finished product and avoid dragging sheets across other surfaces.

Panels are always to be handled by two people.

CLEANING AND MAINTENANCE

Just use a damp cloth with warm water or mild detergents. When needed, it is suggested to use a melamine (magic) sponge for cleaning the surface. In case of micro scratches, please refer to the specific surface thermal healing instructions.



GENERAL PRECAUTIONS:

Polaris must never be treated with products containing abrasive substances, such as sandpaper or steel wool. Products with high acid or very alkaline content should be avoided. Avoid polishes and wax based cleaners, because they tend to form a sticky layer to which the dirt adheres.

THERMAL HEALING INSTRUCTIONS

1. Superficial defects caused by micro-scratches
 2. Place a dampened kitchen roll sheet on the area where the micro-scratches can be seen
 3. Position the heated iron onto the surface that needs to be repaired. Do not leave the iron on the part of the surface for more than 10 seconds
 4. Rinse the area with lukewarm water and microfibre cloth
- The surface should now be healed.



PLYTECH SHOWROOM

26 Business Parade North, PO Box 204-070, Highbrook, Auckland 2161, New Zealand. Phone: 09 573 5016, Fax: 09 573 5035

sales@plytech.co.nz

While every endeavour has been made to ensure that all information contained in this product sheet is accurate, it is intended to be used as a guide line only. We reserve the right to amend specifications without notice. Product Warranty is as per our Standard Terms and Conditions of Trade.



plytech