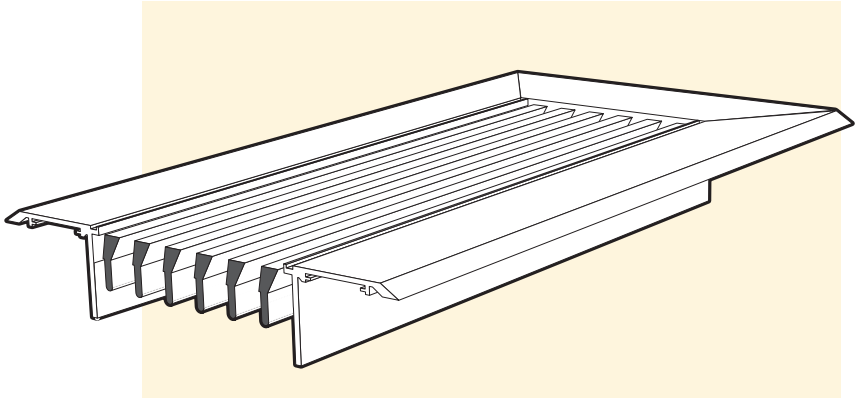
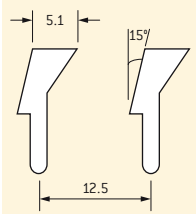


# LDH – Selection Data

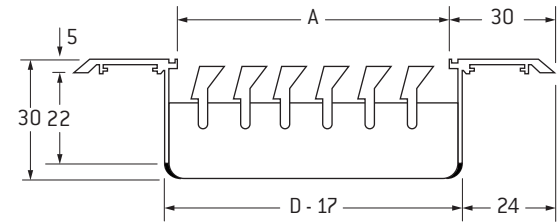
Model: **LDH-1215/LDHF-1215**

- 15° deflection
- 12.5mm spacing
- 5.1mm louver



### Dimensions

D	A	Number of Bars
Listed Size	Opening	
50.0	21.0	2
62.5	33.5	3
75.0	46.0	4
87.5	58.5	5
100.0	71.0	6
125.0	96.0	8
150.0	121.0	10



Same basic design as Model LDH-1200 except that louvers are fixed at 15° deflection. Louvers are spaced on 12.5 centres. Furnished in all standard widths as shown below.

### Floor Application

Where required for floor use, specify LDHF-1215 to signify heavier construction.  
LDHF-1215 grilles have double mullions and frame style 4 solid surround.  
Continuous traffic maximum width 200mm.  
Occasional traffic maximum width 300mm.

Size & Area m <sup>2</sup> /m	Total Pressure	3	7	12	19	27	37	48	61	75
50mm	Flow m <sup>3</sup> /s/m	0.029	0.045	0.059	0.074	0.090	0.104	0.119	0.133	0.149
	NC	-	-	19	26	31	36	40	43	46
	Throw, m	Sill or Floor Side Wall	0.3-0.3 0.9-2.1	1.2-1.2 1.5-3.7	2.1-2.1 2.1-4.9	2.7-3.0 2.7-6.1	3.4-4.0 3.4-7.0	4.3-5.5 3.7-7.6	4.9-6.1 4.3-8.5	5.2-6.7 4.9-9.5
62.5mm	Flow m <sup>3</sup> /s/m	0.042	0.062	0.084	0.104	0.124	0.146	0.166	0.186	0.208
	NC	-	-	19	26	31	36	40	43	46
	Throw, m	Sill or Floor Side Wall	0.3-0.3 1.2-2.4	1.5-1.5 1.8-4.0	2.7-2.7 2.7-5.2	3.4-3.7 3.4-6.4	4.0-4.6 4.0-7.3	4.6-5.5 4.6-8.2	5.2-6.4 5.2-9.5	6.1-6.7 6.1-10.4
75mm	Flow m <sup>3</sup> /s/m	0.053	0.085	0.107	0.133	0.160	0.186	0.214	0.240	0.267
	NC	-	-	19	26	31	36	40	43	46
	Throw, m	Sill or Floor Side Wall	0.6-0.6 1.2-2.7	1.8-1.8 2.1-4.3	3.0-3.4 3.0-5.5	3.7-4.3 3.7-6.7	4.6-5.5 4.6-7.9	5.5-6.1 5.5-9.2	6.1-7.0 6.1-10.1	7.0-7.6 7.0-11.3
87.5mm	Flow m <sup>3</sup> /s/m	0.065	0.098	0.130	0.163	0.195	0.228	0.260	0.293	0.326
	NC	-	-	20	27	32	37	41	44	47
	Throw, m	Sill or Floor Side Wall	0.6-0.6 1.5-3.0	2.4-2.4 2.4-4.6	3.4-3.7 3.4-6.1	4.6-4.6 4.6-7.3	5.2-5.8 5.2-8.5	6.4-6.7 6.4-10.0	6.7-7.6 7.6-11.9	8.5-8.8 8.5-13.1
100mm	Flow m <sup>3</sup> /s/m	0.079	0.118	0.158	0.197	0.236	0.276	0.315	0.353	0.394
	NC	-	-	21	28	33	38	42	45	48
	Throw, m	Sill or Floor Side Wall	0.9-0.9 1.8-3.4	2.7-2.7 3.0-5.2	4.0-4.0 4.0-6.4	4.9-5.2 4.9-7.6	5.8-6.4 5.8-8.8	6.7-7.0 6.7-10.1	7.3-7.9 7.3-11.3	8.2-8.2 8.2-12.5
125mm	Flow m <sup>3</sup> /s/m	0.104	0.155	0.208	0.259	0.310	0.363	0.414	0.467	0.518
	NC	-	-	21	28	33	38	42	45	48
	Throw, m	Sill or Floor Side Wall	1.2-1.2 2.4-4.0	3.0-3.0 3.4-5.5	4.3-4.3 4.3-7.0	5.5-5.5 5.5-8.2	6.4-6.7 6.4-9.5	7.3-7.6 7.3-10.7	7.9-8.5 7.9-11.9	9.2-9.2 9.2-13.1
150mm	Flow m <sup>3</sup> /s/m	0.130	0.195	0.260	0.326	0.391	0.456	0.521	0.586	0.651
	NC	-	-	23	30	35	40	44	47	50
	Throw, m	Sill or Floor Side Wall	1.5-1.5 2.7-4.6	3.0-3.0 4.0-6.1	4.6-4.6 5.2-7.6	5.8-5.8 6.1-8.8	7.0-7.0 7.0-10.0	7.6-7.6 7.9-11.3	8.5-8.8 8.5-12.2	9.5-9.5 9.2-13.4

Guide Product Weights	
Model	Approximate Weight in Kg per metre x 150mm
LDH-1215	2.3
LDHF-1215	3.0

**Note**  
Refer to page 51B, Frame Style 4, for LDHF Surround.

## Fineline Diffusers

**SERIES LD** linear bar grilles are designed for supply and return air distribution in heating, cooling and ventilating applications which call for diffusers having long or continuous slender appearance, fixed air discharge angles of zero or 15 degrees, and installed in walls, floors, sills or ceilings.

**CONSTRUCTION** is of extruded aluminium face, bars and frame of alloy 6063-T5, notched mullions, mechanically compressed together to form a powerfully bonded core, which is welded at mullion ends to the frame. 'F' models for floor use, have double mullions and 30 x 30 x 15 x 3 Solid 'Z' frames.

Model	Bar		
	Width mm	Spacing mm	Deflection
LD-600	3.25	6.35	0°
LD-615	3.25	6.35	15°
LD-1200	3.25	12.5	0°
LD-1215	3.25	12.5	15°
LDH-1200	5.6	12.5	0°
LDHF-1200+	5.6	12.5	0°
LDH-1215	5.6	12.5	15°
LDHF-1215+	5.6	12.5	15°
LDH-2500*	5.6	25	0°
LDH-2515*	5.6	25	15°

\* Return/Exhaust Diffuser + Suitable for floor applications

WIDTH maximum for 'F' models is:

Continuous traffic: 200mm, Occasional traffic: 300mm. All models can be furnished with mitred 90° corners, or other angles where templates are furnished to the factory. Refer illustrations on this sheet for corner descriptions. The minimum length is 200mm. The maximum length for a single section is 2.8m.

### Accessory Damper

Available with opposed blade dampers, screwdriver operated through the face. Specify OBD#1.

### Notes

General Notes to be read in conjunction with performance tables on the following pages.

This data is reliable information for cooling, ventilating and heating applications.

1. All pressures are Pa (N/m<sup>2</sup>).

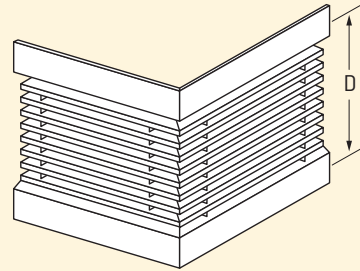
2. Minimum throw values refer to a terminal velocity of 0.75 m/s and maximum to 0.25 m/s, for a 1200mm active section with a cooling temperature differential of 12°C.

The multiplier factors listed in the table below are applicable for other lengths.

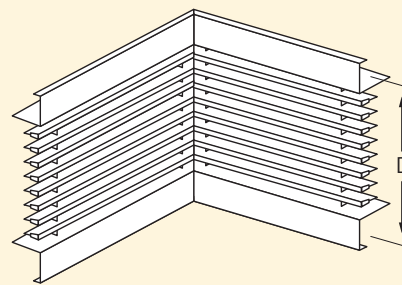
Active Length	Terminal Velocity	
	0.75 m/s	0.25 m/s
300mm	0.5	0.7
3000mm Or Continuous	1.6	1.2

### Mitred Corners

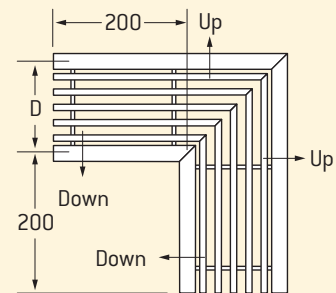
#### Outside corner (Side wall)



#### Inside corner (Side wall)



#### Floor, Ceiling or Sill



Note: When specifying corners ensure to nominate the blade orientation (up or down) if using the 15° blade.

3. The NC values are based on a room absorption of 10dB, re 10<sup>-12</sup> watts and a 3000mm active section.

Use the following multipliers for other active lengths.

NC CORRECTION FOR LENGTH											
Active Length, mm	300	600	1000	1200	1800	2400	3000	4500	6000	7500	9000
	-10	-7	-5	-4	-2	-1	0	+2	+3	+4	+5

4. Return Intake - When used as a return intake the NC value given will be increased by 4 and the negative static pressure will be 0.8 times the total pressure shown.

# LD, LDH, LDHF, LDSD & PMF

## Diffuser Description Code Examples and Suggested Specifications

<b>LD</b> <b>LDH</b> <b>LDHF</b> <b>LDSD</b>	–	<b>600</b> <b>615</b> <b>1200</b> <b>1215</b> <b>2500*</b> <b>2515*</b> <b>Floor</b> <b>Grilles</b>	–	<b>1</b>	–	<b>2100 x 100</b>	–	<b>OBD</b>	–	<b>RC</b>	–	<b>FINISH</b>
Series		Blade Configuration (Spacing/deflection)		Frame Style		Duct Size		Optional Opposed Blade Damper		Removeable Core Frame		Holyoake White Mill Aluminium or Powder Coat

\* Return/Exhaust Grilles, not suitable for floor applications.

The Holyoake LD Range of linear diffusers shall be of extruded aluminium construction. Blades shall be mechanically expanded into notched mullions spaced at nominal centres. Diffusers shall be fitted with accessory dampers and have optional frame styles and finish where indicated.

All shall be as manufactured by Holyoake.

<b>LDH</b>	–	<b>CF</b>	–	<b>600 x 600</b>	–	<b>x 32</b>	–	<b>OBD</b>	–	<b>FINISH</b>
Series		Computer Floor		Module Size		Tile Depth		Optional Opposed Blade Damper		Holyoake White Mill Aluminium or Powder Coat

Holyoake LDH-CF Computer Floor supply grilles shall be of extruded aluminium, welded construction, with blades mechanically expanded into double, notched mullions spaced at nominal centres. They shall be designed to withstand a concentrated load of 500 kg over an area of 645mm<sup>2</sup> (1 square inch) at the centre, with no permanent distortion and maximum deflection under load of 0.66mm. Accessory volume control dampers, adjustable through the face, shall be furnished where indicated.

The whole assembly shall be as manufactured by Holyoake.

<b>PMF</b>	–	<b>LD</b> <b>LDH</b> <b>LF</b>	–	<b>600+</b> <b>615+</b> <b>1200</b> <b>1215</b> <b>2500*</b> <b>2515*</b>	–	<b>SD</b>	–	<b>WxH</b>	–	<b>FINISH</b>
Plaster Mounting Frame		Bar Grille Series		Blade Configuration (Spacing/deflection)		Optional - Adjustable Rear Blades		Duct Size		Holyoake White Mill Aluminium or Powder Coat

\* Return/Exhaust Grilles, not suitable for floor applications. +See Notes on Page 68B.

Holyoake Series PMF – Plaster Mounting Frame shall be of extruded aluminium construction.

PMF Grilles shall have a flange width no greater than 6mm.

The Plaster Mounting Frame shall be fixed into a wall opening and plaster stopped before fitting of the Flangeless Grille. The Grille shall have blades notched into mullions spaced at nominal centres and may have a second row of adjustable 'SD' blades if specified.

All shall be as manufactured by Holyoake.

**Note** When LD Variants are ceiling mounted, seismic restraints are required, but not supplied.