

Precast Concrete coated with a suitable sealer

Head Detail

Custom head flashing

Continuous head seals

OMEGA Windows and Doors 500 Architectural Series

Continuous Water resistant 'Air Seal' to perimeter of trim cavity

Head Detail

Continuous Water resistant 'Air Seal' to perimeter of trim cavity

OMEGA Windows and Doors 500 Architectural Series

OMEGA Windows and Doors 500 Architectural Series

Support Angle

Continuous Water resistant 'Air Seal' to perimeter of trim cavity

Precast Concrete coated with a suitable sealer

Jamb Detail

Sill Detail

Precast Concrete coated with a suitable sealer

Precast Concrete coated with a suitable sealer

Head Detail

Custom head flashing

Continuous head seals

OMEGA Windows and Doors 500 Architectural Series

Continuous Water resistant 'Air Seal' to perimeter of trim cavity

Continuous Water resistant 'Air Seal' to perimeter of trim cavity

OMEGA Windows and Doors 500 Architectural Series

Continuous Water resistant 'Air Seal' to perimeter of trim cavity

OMEGA Windows and Doors 500 Architectural Series

Support Angle

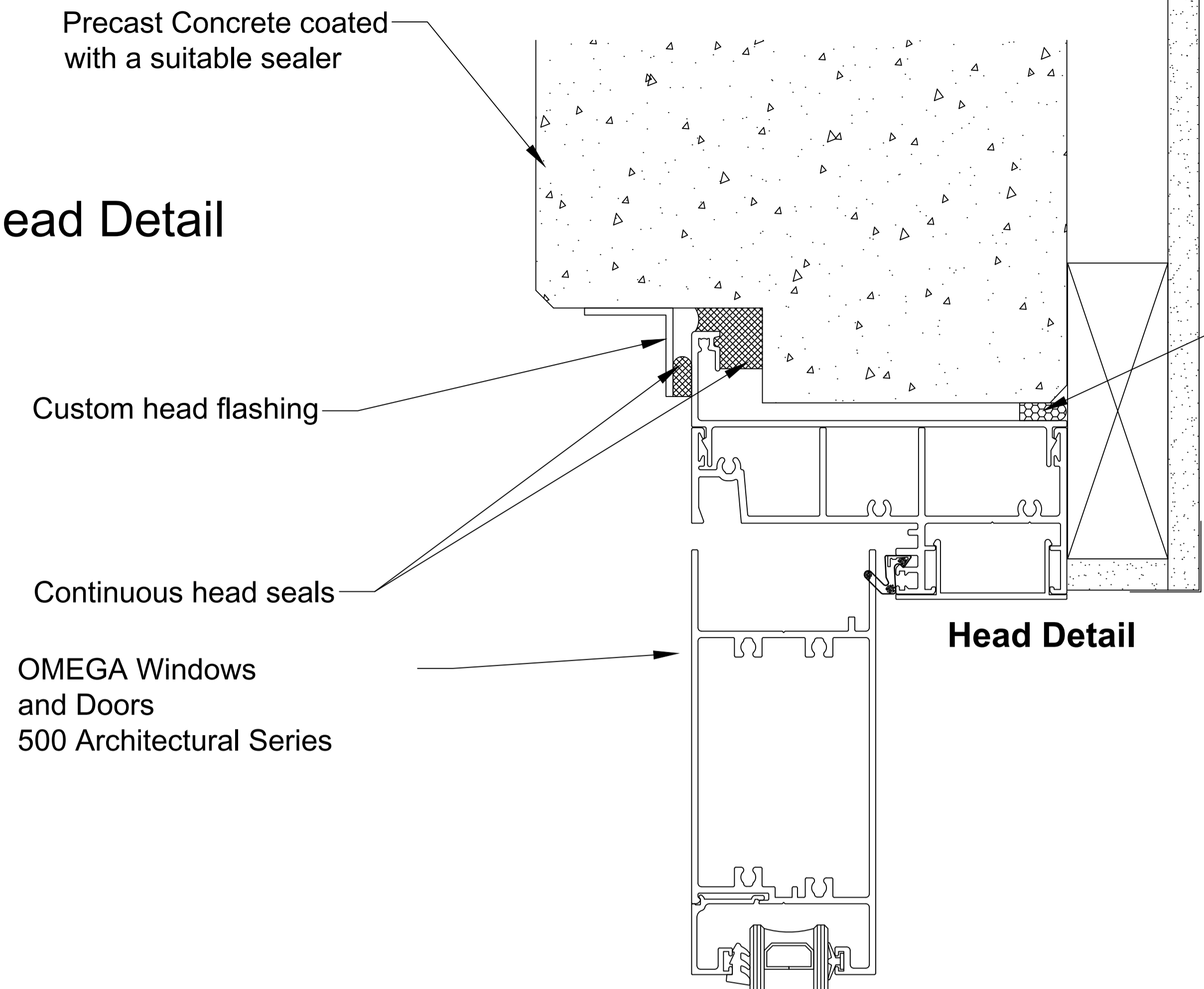
Continuous seal

Precast Concrete coated with a suitable sealer

Sill Detail

Jamb Detail

Head Detail

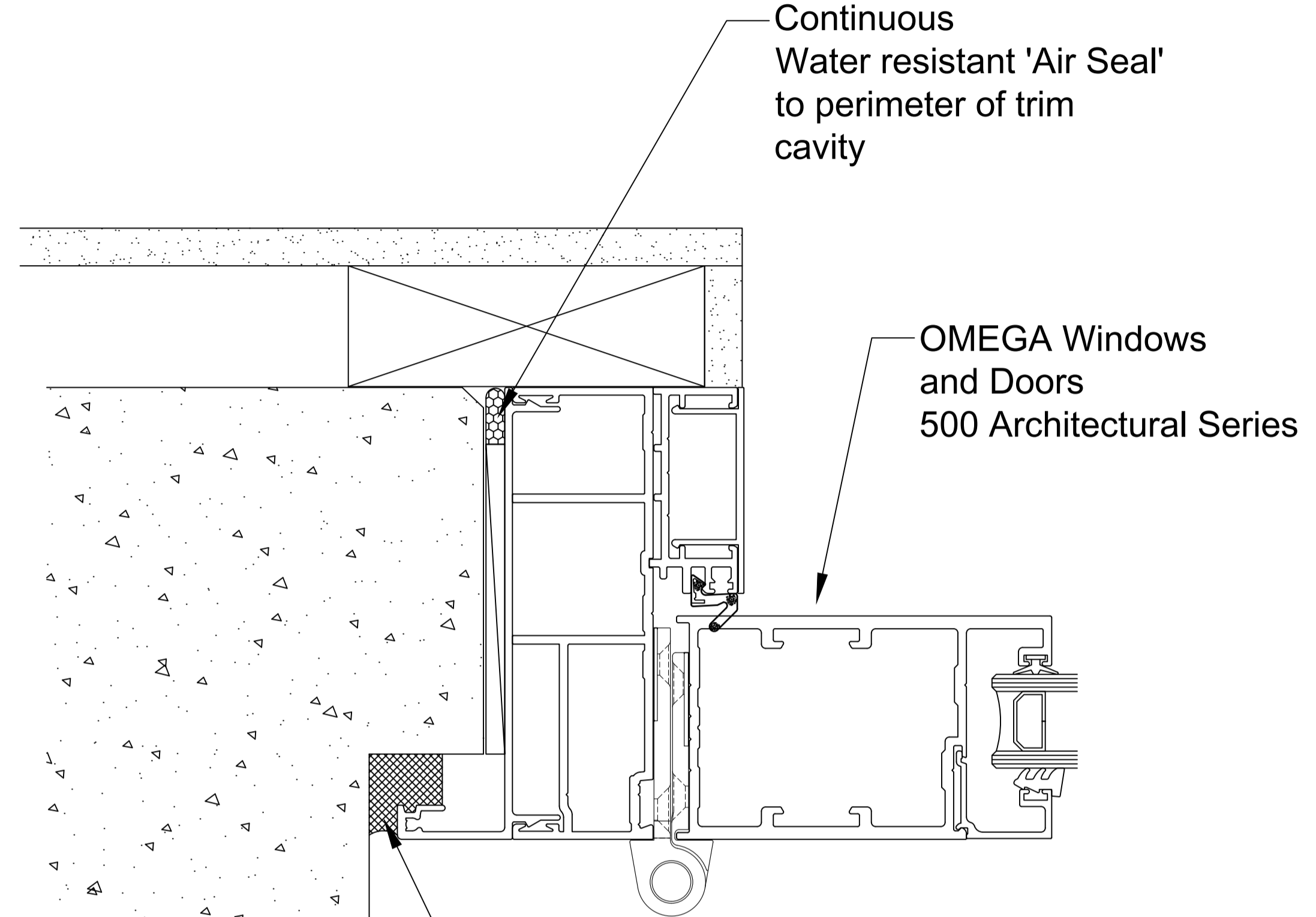


Continuous Water resistant 'Air Seal' to perimeter of trim cavity

Continuous Water resistant 'Air Seal' to perimeter of trim cavity

Head Detail

Jamb Detail



OMEGA Windows and Doors 500 Architectural Series

Continuous Water resistant 'Air Seal' to perimeter of trim cavity

Continuous seal

Unit support block

Approved DPC or similar to sill platform & extend 200mm up the jambs

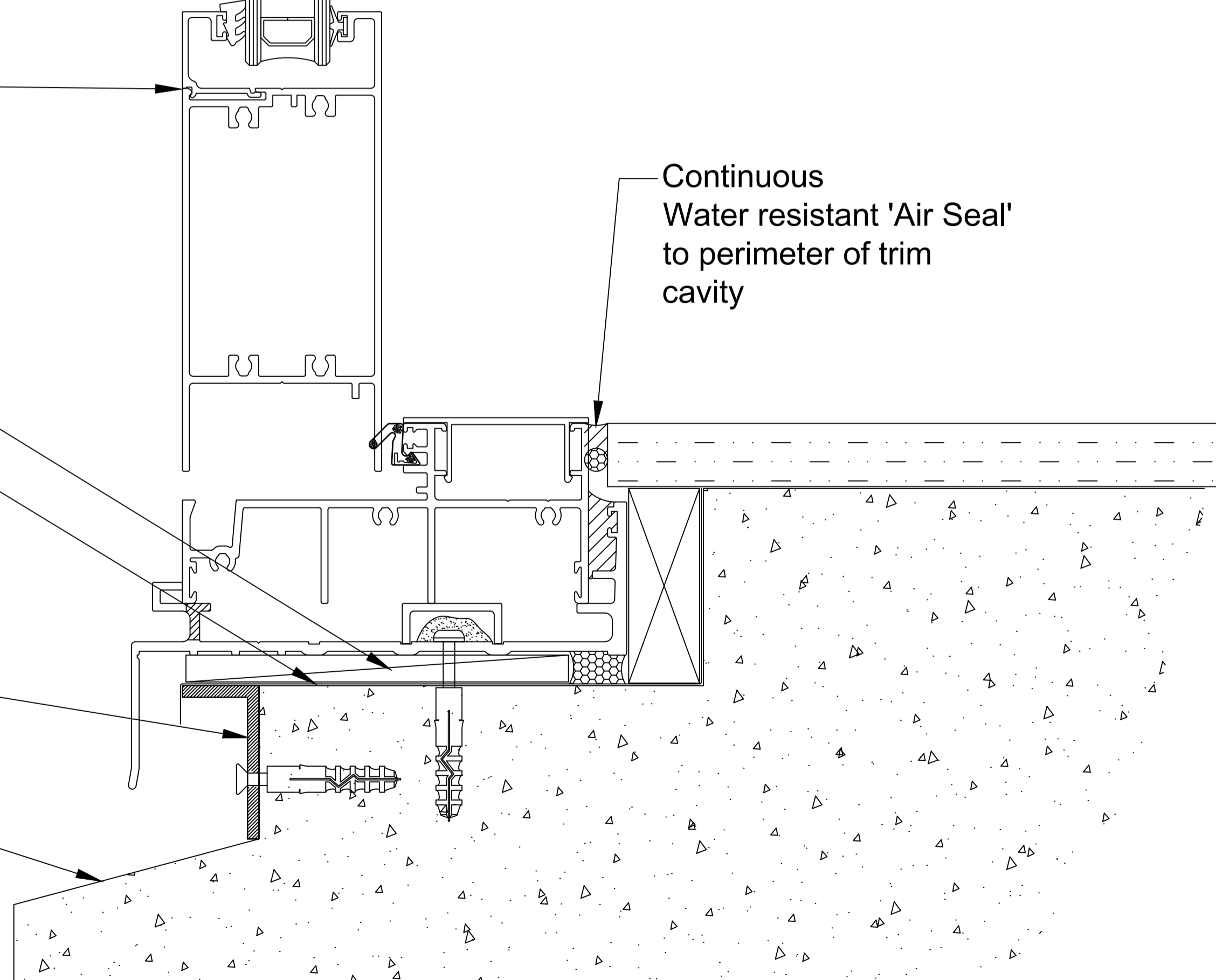
Precast Concrete coated with a suitable sealer

Support Angle

Jamb Detail

Sill rebate as required

Sill Detail



This document is intended as a guide only and is to be used in conjunction with The WANZ Guide to Window Installation as described in E2/AS1 Amendment 5 (see link below) <http://www.wanz.org.nz/download/WANZ%20Guide%20to%20E2%20AS1%20Amd%206%20V1.3%20Dec%202014.pdf>

**OMEGA WINDOWS AND DOORS
OPEN OUT HINGE DOOR
400 SERIES ARCHITECTURAL**

**PRECAST CONCRETE
COATED WITH SUITABLE
SEALER**

50.0
SCALE 1:1 @ A1

Precast Concrete coated with a suitable sealer

Head Detail

Custom head flashing

Continuous head seals

Continuous Water resistant 'Air Seal' to perimeter of trim cavity

Head Detail

OMEGA Windows and Doors 500 Architectural Series

OMEGA Windows and Doors 500 Architectural Series

Continuous Water resistant 'Air Seal' to perimeter of trim cavity

Sill Detail

Support Angle

Sill rebate as required

Continuous Water resistant 'Air Seal' to perimeter of trim cavity

OMEGA Windows and Doors 500 Architectural Series

Continuous seal

Precast Concrete coated with a suitable sealer

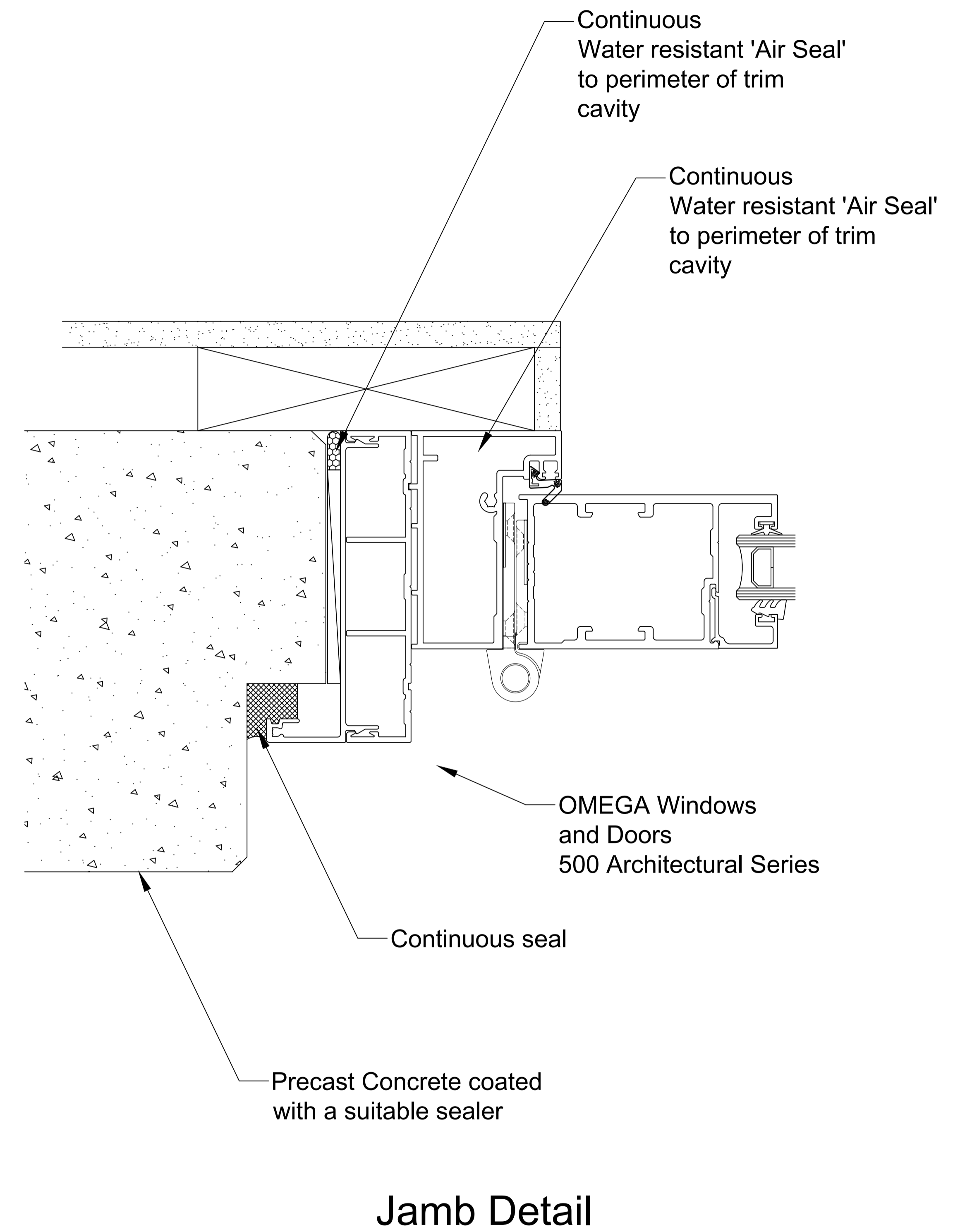
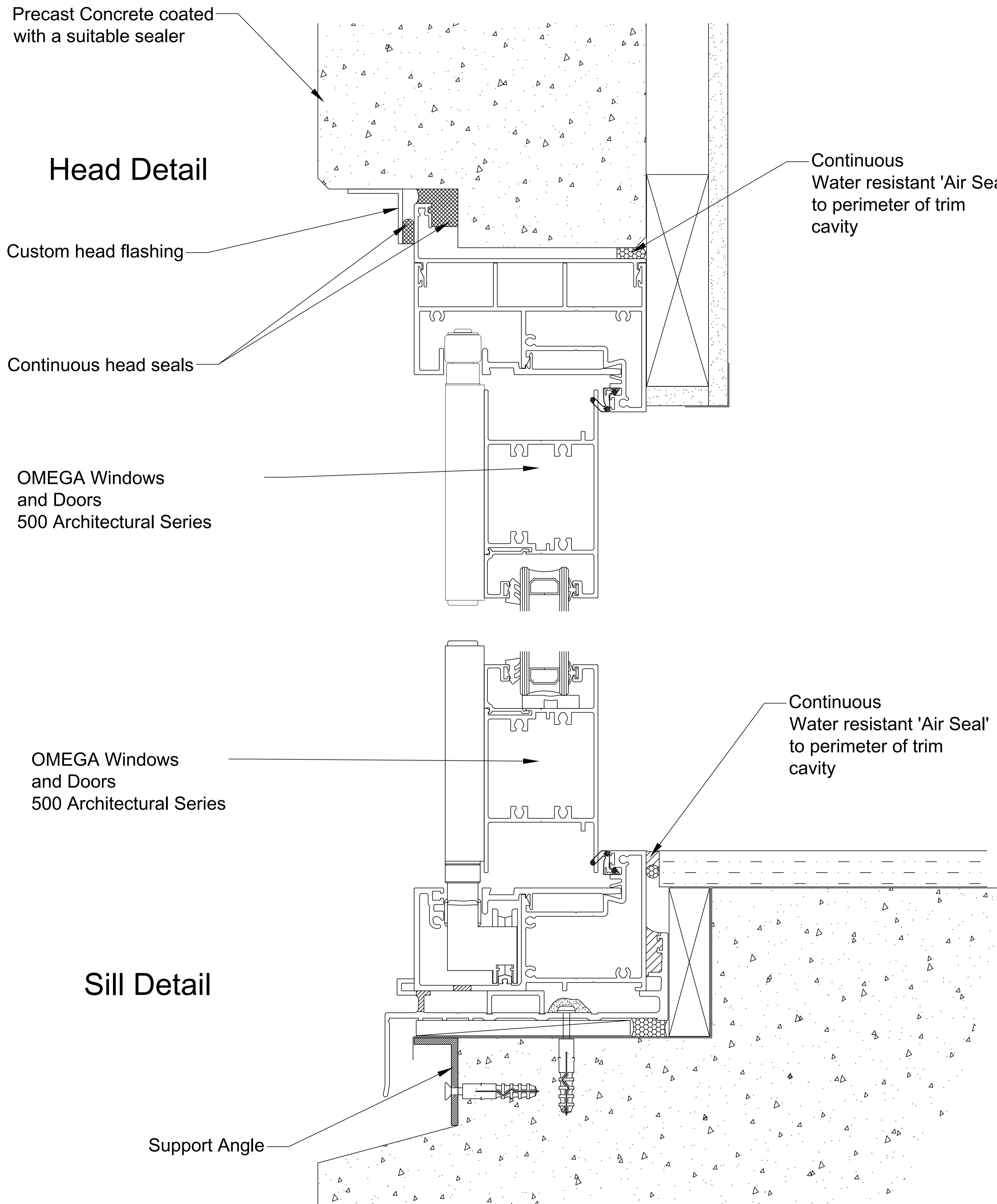
Jamb Detail

This document is intended as a guide only and is to be used in conjunction with The WANZ Guide to Window Installation as described in E2/AS1 Amendment 5 (see link below) <http://www.wanz.org.nz/download/WANZ%20Guide%20to%20E2%20AS1%20Amd%206%20V1.3%20Dec%202014.pdf>

OMEGA WINDOWS AND DOORS
OPEN IN HINGE DOOR
400 SERIES ARCHITECTURAL

PRECAST CONCRETE
COATED WITH SUITABLE
SEALER

50.0
SCALE 1:1 @ A1



This document is intended as a guide only and is to be used in conjunction with The WANZ Guide to Window Installation as described in E2/AS1 Amendment 5 (see link below) <http://www.wanz.org.nz/download/WANZ%20Guide%20to%20E2%20AS1%20Amd%206%20V1.3%20Dec%202014.pdf>

**OMEGA WINDOWS AND DOORS
BIFOLD DOOR
400 SERIES ARCHITECTURAL**

**PRECAST CONCRETE
COATED WITH SUITABLE
SEALER**

50.0
SCALE 1:1 @ A1

Precast Concrete coated with a suitable sealer

Head Detail

Custom head flashing

Continuous head seals

OMEGA Windows and Doors 500 Architectural Series

Continuous Water resistant 'Air Seal' to perimeter of trim cavity

Continuous Water resistant 'Air Seal' to perimeter of trim cavity

OMEGA Windows and Doors 500 Architectural Series

Continuous seal

Precast Concrete coated with a suitable sealer

OMEGA Windows and Doors 500 Architectural Series

Sill Detail

Continuous Water resistant 'Air Seal' to perimeter of trim cavity

Support Angle

Jamb Detail

This document is intended as a guide only and is to be used in conjunction with The WANZ Guide to Window Installation as described in E2/AS1 Amendment 5 (see link below) <http://www.wanz.org.nz/download/WANZ%20Guide%20to%20E2%20AS1%20Amd%206%20V1.3%20Dec%202014.pdf>

OMEGA WINDOWS AND DOORS
SLIDING DOOR
400 SERIES ARCHITECTURAL

PRECAST CONCRETE
COATED WITH SUITABLE
SEALER

50.0
SCALE 1:1 @ A1

Head Detail

Precast Concrete coated with a suitable sealer

Custom head flashing

Continuous head seals

OMEGA Windows and Doors 500 Architectural Series

Continuous Water resistant 'Air Seal' to perimeter of trim cavity

Continuous Water resistant 'Air Seal' to perimeter of trim cavity

OMEGA Windows and Doors 500 Architectural Series

Continuous Water resistant 'Air Seal' to perimeter of trim cavity

Continuous seal

Precast Concrete coated with a suitable sealer

Sill Detail

Support Angle

Sill rebate as required

Jamb Detail

This document is intended as a guide only and is to be used in conjunction with The WANZ Guide to Window Installation as described in E2/AS1 Amendment 5 (see link below) <http://www.wanz.org.nz/download/WANZ%20Guide%20to%20E2%20AS1%20Amd%206%20V1.3%20Dec%202014.pdf>

OMEGA WINDOWS AND DOORS
STACKING SLIDING DOOR
400 SERIES ARCHITECTURAL

PRECAST CONCRETE
COATED WITH SUITABLE
SEALER

50.0
SCALE 1:1 @ A1

Precast Concrete coated with a suitable sealer

Head Detail

Custom head flashing

Continuous head seals

OMEGA Windows and Doors 500 Architectural Series

OMEGA Windows and Doors 500 Architectural Series

Sill Detail

Support Angle

Precast Concrete coated with a suitable sealer

Continuous Water resistant 'Air Seal' to perimeter of trim cavity

Continuous Water resistant 'Air Seal' to perimeter of trim cavity

OMEGA Windows and Doors 500 Architectural Series

Continuous Water resistant 'Air Seal' to perimeter of trim cavity

Continuous seal

Precast Concrete coated with a suitable sealer

Jamb Detail

This document is intended as a guide only and is to be used in conjunction with The WANZ Guide to Window Installation as described in E2/AS1 Amendment 5 (see link below) <http://www.wanz.org.nz/download/WANZ%20Guide%20to%20E2%20AS1%20Amd%206%20V1.3%20Dec%202014.pdf>

OMEGA WINDOWS AND DOORS
STACKING SLIDING DOOR
400 SERIES ARCHITECTURAL

PRECAST CONCRETE
COATED WITH SUITABLE
SEALER

50.0
SCALE 1:1 @ A1