

SOLID INSULATION AND LIGHTWEIGHT POLYSTYRENE CONSTRUCTION SOLUTIONS



Learn about our recycling initiatives



NEW GENERATION
Consciously designed
& engineered



CONCRETE FLOOR EDGE INSULATION

EXPOL's range of concrete floor (slab) edge insulation products provide thermal insulation and strength where it counts. Up to 10% of heat loss from a building is through the concrete slab. A building with slab edge insulation provides a warm, dry and healthy indoor environment for occupants, and reduces heating and cooling costs.

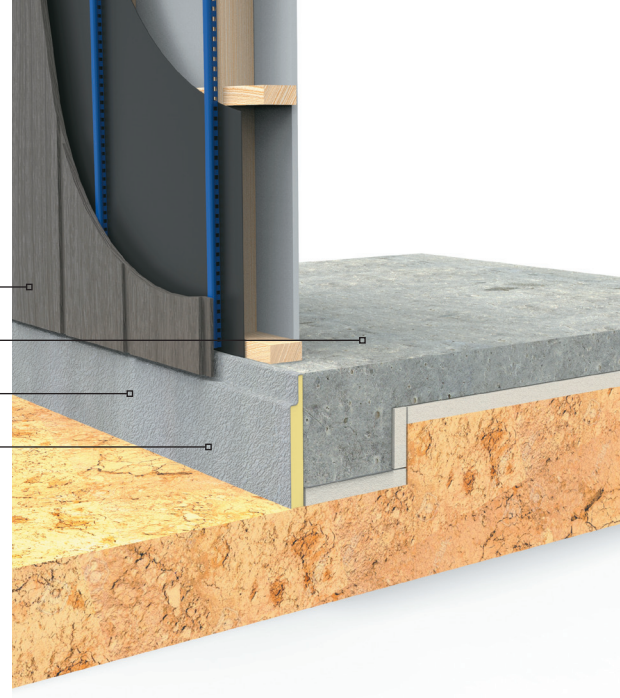
MAXEdge (for in-situ application) and EXPOL ThermaSlab Edge (for retro fit application) won't degrade over time, meaning thermal insulation performance is maintained for the life of the building. EXPOL concrete floor edge insulation is suitable for both residential and commercial building projects.



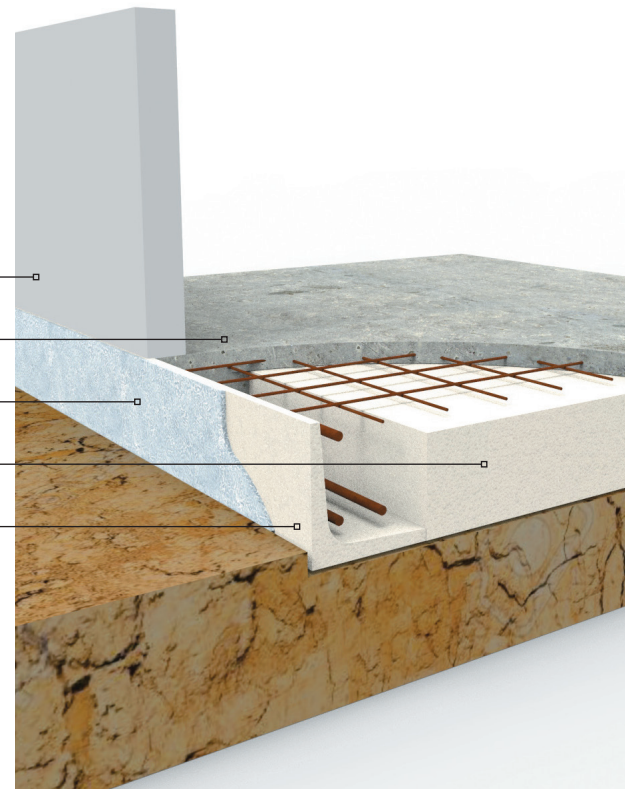
THERMASLAB/EDGE
SLAB EDGE INSULATION

MAXEdge[®]
Patented Technology

External cladding
Concrete floor
Water-proof resin coating
ThermaSlab Edge



External cladding
Concrete floor
Water-proof resin coating
EXPOL Tuff POD
MAXEdge



SYSTEM COMPONENTS



EXPOL Patch Kit

A 4 Litre pail of our water-based, water-proof resin coating suitable for patching joints.



STYRO-FIX CONSTRUCTION ADHESIVE

Styro-FIX is an advanced single component polyurethane-based construction adhesive. This powerful adhesive is developed especially for the construction industry and will bond most types of construction materials including timber (damp and dry), concrete, plasterboard, polystyrene and many other porous and non-porous substrates. It bonds expanded polystyrene to most surfaces, delivers strong adhesion and rapid cure, it is gun-able and non-drip.

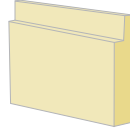


EXPOL DESIGNED HIGH PERFORMANCE SLAB EDGE INSULATION SYSTEM

PRE-COATED - With a water-proof resin coating that does not require painting, saving time and money.



CLEAN INSULATION - ThermaSlab Edge is also available as clean insulation, requiring plastering after the concrete pour.



ThermaSlab Edge Technical Specifications

Property	Unit	EXPOL ThermaSlab Edge	Test Reference
Material		Uncoated - Extruded Polystyrene. Coated - Extruded Polystyrene with a water-based, waterproof resin coating.	
Density	kg/m ³	30	
Product R-value		R1.0	ASTM C518-04

BENEFITS:

- Increases the thermal performance of a building
- A simple, cost-effective slab edge insulation system
- Designed to meet new H1 standards
- No painting required, saving time and money
- Exceptional insulation values
- High water resistance
- Lightweight and easy to handle

PRODUCT OPTIONS & SIZES

Sheet Size (mm)

	Length	Height	Thickness
EXPOL	2500	300	30
ThermaSlab Edge	2500	400	30

MAXEdge®
Patented Technology

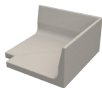
NEW ZEALAND'S LEADING HIGH PERFORMANCE SLAB EDGE INSULATION SYSTEM

Pre-made L Shape Perimeter Slab Insulation

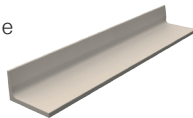
PRE-COATED - With a water-proof resin coating that does not require painting, saving time and money.

CLEAN INSULATION - MAXEdge is also available as clean insulation, requiring plastering after the concrete pour.

Pre-made corners
600 x 600mm



MAXEdge length
2.4m



BENEFITS:

- MAXEdge is a simple solution for your concrete slab perimeter that exceeds H1 requirements
- Fast and Easy: Pre-made L-shaped perimeter insulation that fits inside the formwork
- Standard heights: 305, 320, 340, 385, 400 & 420mm to suit any raft slab, bespoke heights are available
- MAXEdge perimeter insulation comes in lengths of 2.4m
- MAXEdge perimeter insulation is also available in pre-made corners of 600 x 600mm
- Suitable with any frame size

FURTHER INFORMATION

Scan the code to access the EXPOL Concrete Floor Solutions Guide



For further, detailed information on all products refer page 38 & 39 or contact EXPOL 0800 86 33 73.

For Expanded Polystyrene Densities and Colour Coding refer page 39.

Contact EXPOL
T: 0800 86 33 73

Sales
E: sales@expol.co.nz

Quotes / Technical
E: tech@expol.co.nz

EXPOL Product Training
www.expolexpert.co.nz

EXPOL and the Environment
www.expolearth.co.nz

EXPOL
www.EXPOL.co.nz

