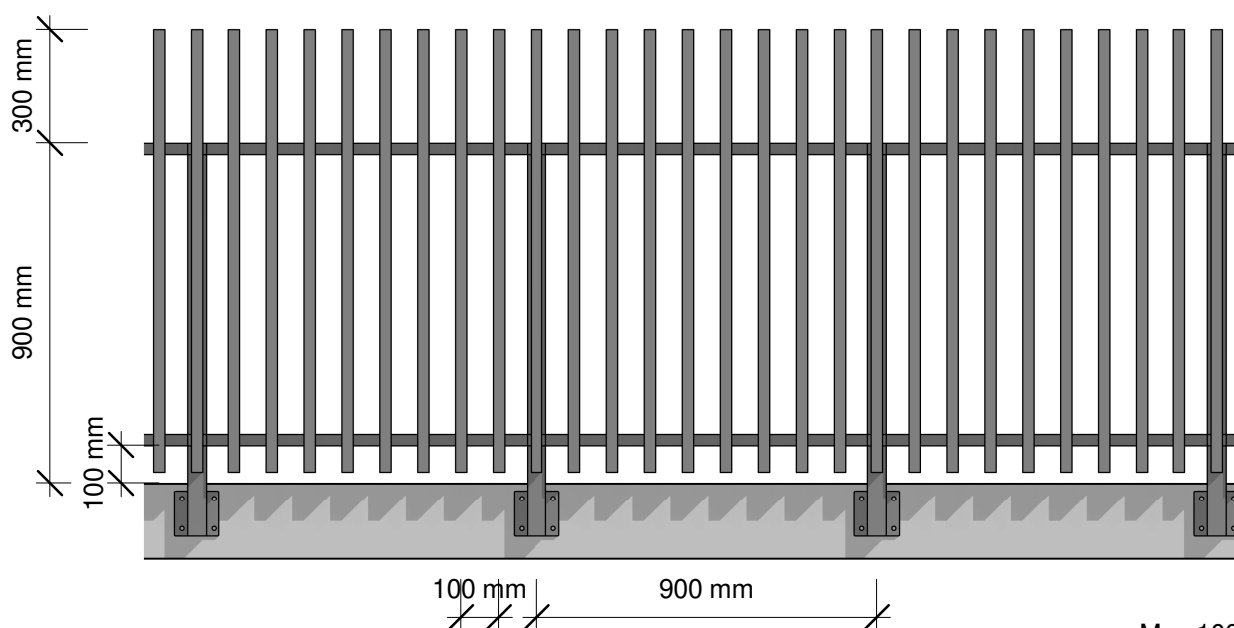


Plan



Max 100mm from
F.F.L. to CL of top
fasteners to all face
fixed barriers

Elevation

Plot Date: 20 May 2019 16:44

© 2019. The copyright of this document is the property of Glass Vice Limited and shall not be reproduced, copied, loaned or disposed of directly, or indirectly, nor used for any purpose other than that for which it is specifically furnished without prior consent.

All dimensions in millimetres

GLASS
VICE

Vertical Battens

1200mm High Face Fixed

Elevation - Face Fix 1.2M Residential Barrier - 300 Top Rail

Date: 10 April 2019

Scale: 1 : 20

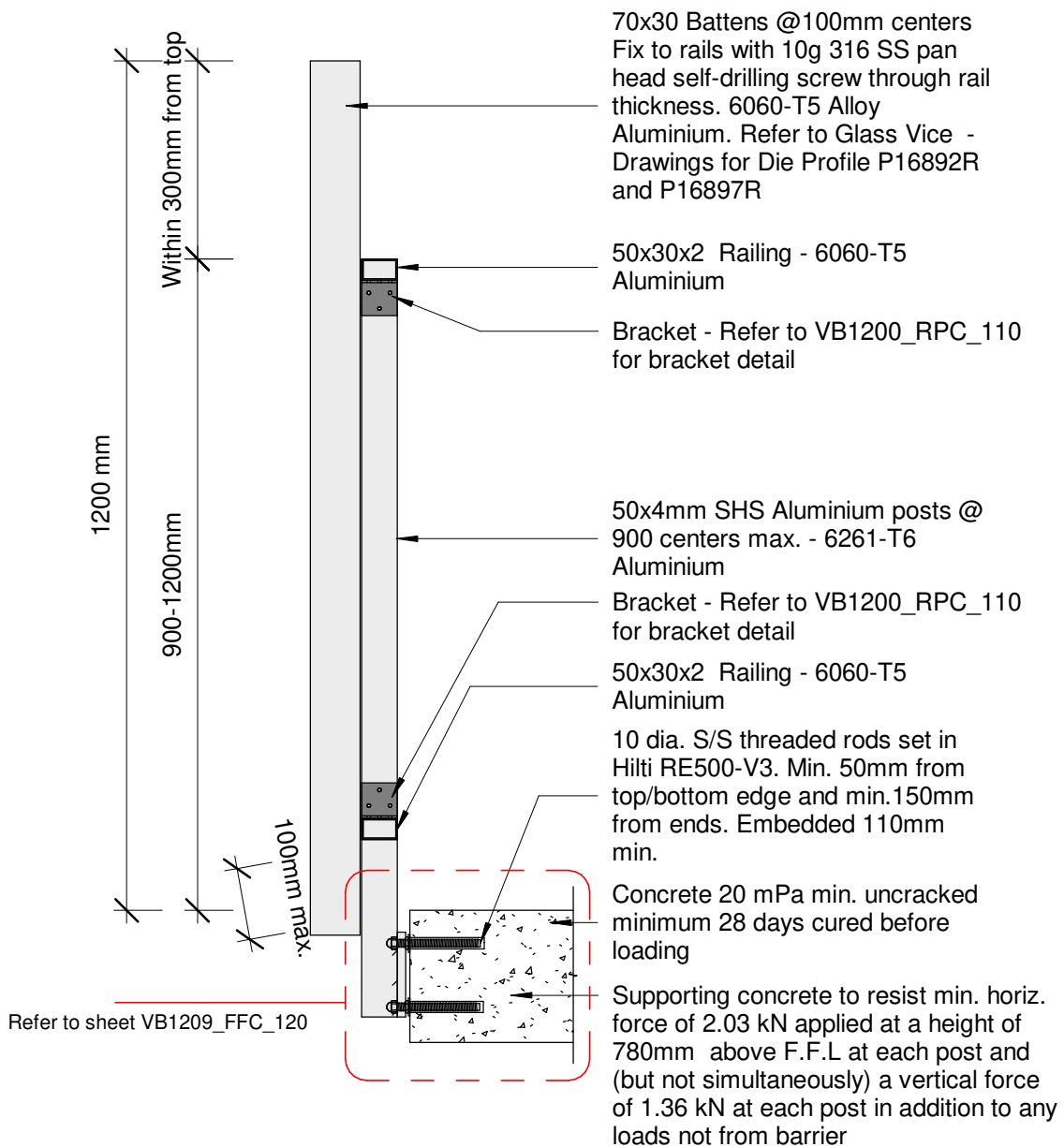
Issue 01

www.glassvice.com

Phone +64 9 414 6565

info@glassvice.com

VB1209_119



Plot Date: 20 May 2019 16:44

© 2019. The copyright of this document is the property of Glass Vice Limited and shall not be reproduced, copied, loaned or disposed of directly, or indirectly, nor used for any purpose other than that for which it is specifically furnished without prior consent.

All dimensions in millimetres



Vertical Battens

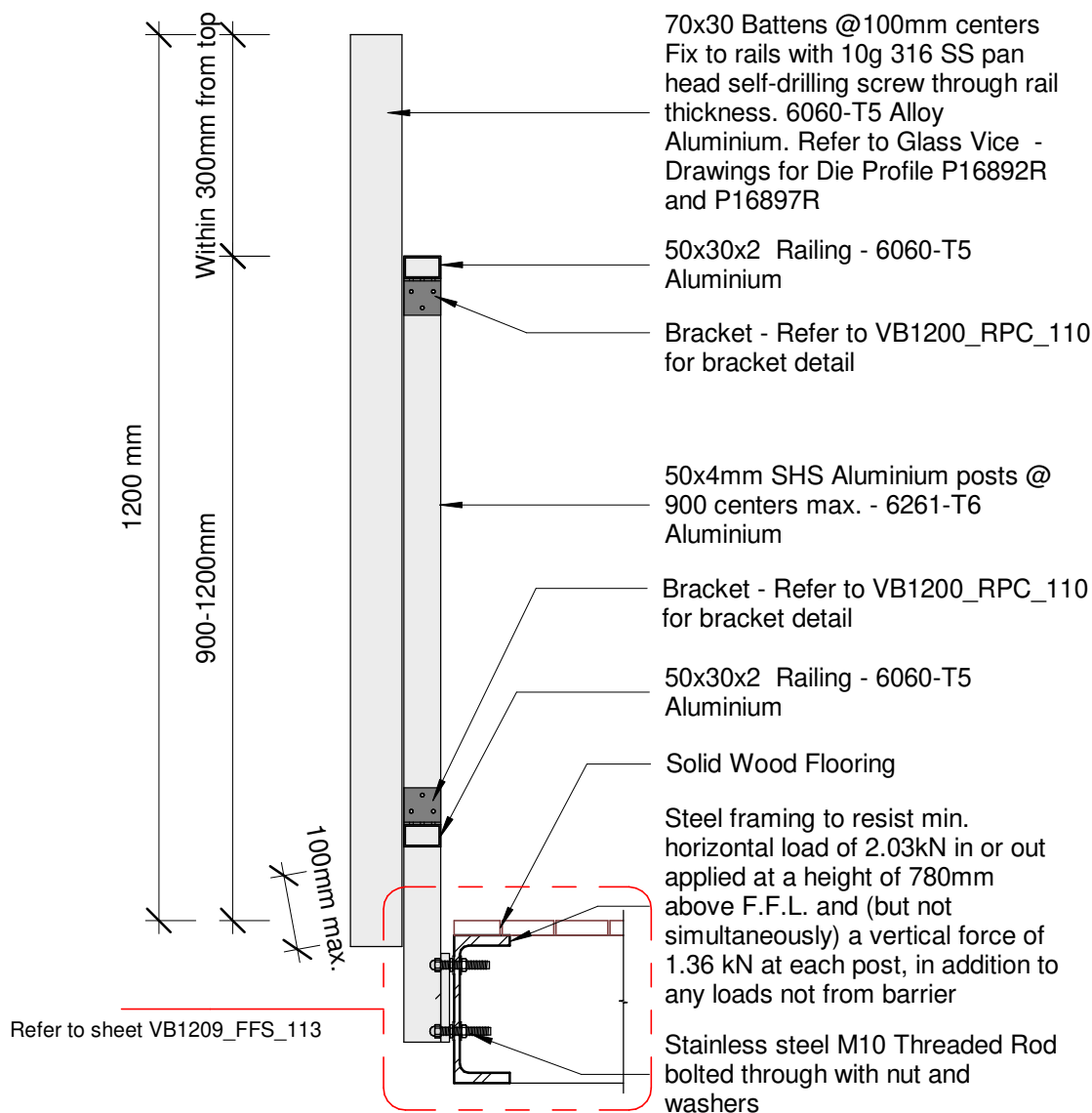
1200mm High Face Fixed into Concrete

Section - Face Fix Concrete 1.2M Residential Barrier - 300 Top Rail

Date: 10 April 2019
Scale: 1 : 10
Issue 01

www.glassvice.com
Phone +64 9 414 6565
info@glassvice.com

VB1209_200



Plot Date: 20 May 2019 16:44

© 2019. The copyright of this document is the property of Glass Vice Limited and shall not be reproduced, copied, loaned or disposed of directly, or indirectly, nor used for any purpose other than that for which it is specifically furnished without prior consent.

All dimensions in millimetres

GLASS
VICE

Vertical Battens

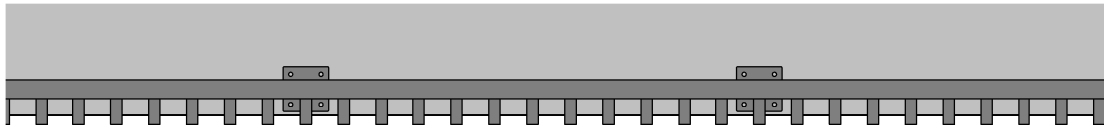
1200mm High Face Fixed into Steel Beam

Section - Face Fix Steel Beam 1.2M Residential Barrier - 300 Top Rail

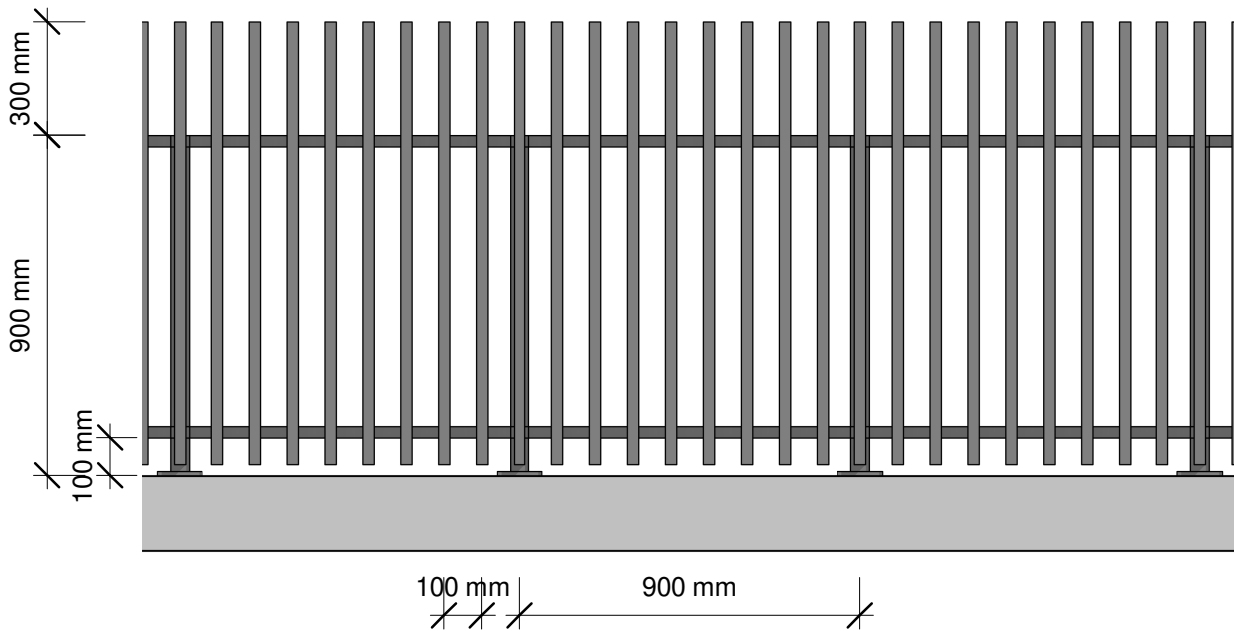
Date: 10 April 2019
Scale: 1 : 10
Issue 01

www.glassvice.com
Phone +64 9 414 6565
info@glassvice.com

VB1209_201



Plan



Elevation

Plot Date: 20 May 2019 16:44

© 2019. The copyright of this document is the property of Glass Vice Limited and shall not be reproduced, copied, loaned or disposed of directly, or indirectly, nor used for any purpose other than that for which it is specifically furnished without prior consent.

All dimensions in millimetres



Vertical Battens 1200mm High Top Fixed

Elevation - Top Fix 1.2M Residential Barrier - 300 Top Rail

Date: 10 April 2019

Scale: 1 : 20

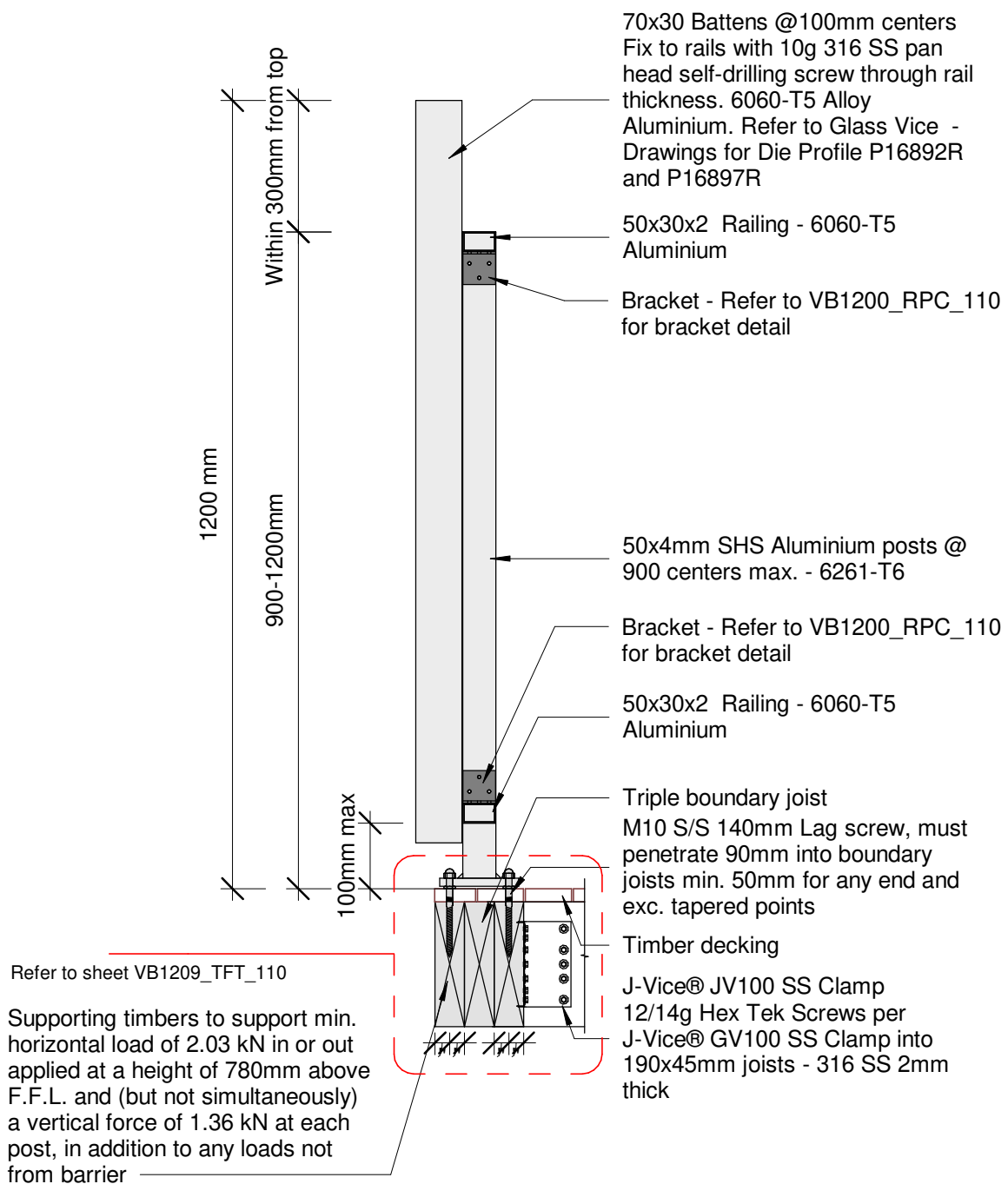
Issue 01

www.glassvice.com

Phone +64 9 414 6565

info@glassvice.com

VB1209_210



Plot Date: 20 May 2019 16:44

© 2019. The copyright of this document is the property of Glass Vice Limited and shall not be reproduced, copied, loaned or disposed of directly, or indirectly, nor used for any purpose other than that for which it is specifically furnished without prior consent.

All dimensions in millimetres

GLASS
VICE®

Vertical Battens

1200mm High Top Fixed into Timber

Section - Top Fix 190 Triple Joist 1.2M Residential Barrier - 300 Top Rail

Date: 10 April 2019

Scale: 1 : 10

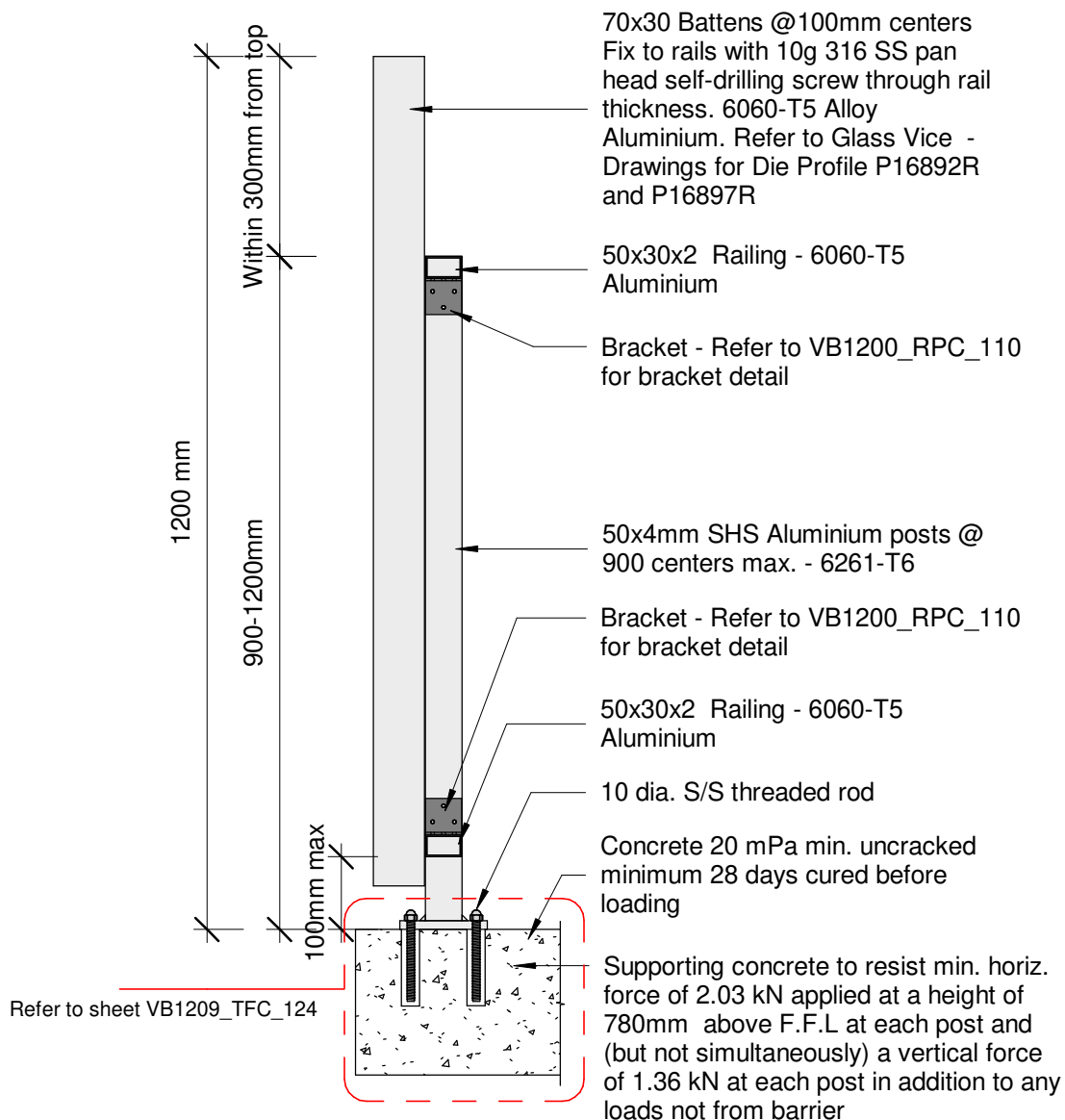
Issue 01

www.glassvice.com

Phone +64 9 414 6565

info@glassvice.com

VB1209_230



Plot Date: 20 May 2019 16:44

© 2019. The copyright of this document is the property of Glass Vice Limited and shall not be reproduced, copied, loaned or disposed of directly, or indirectly, nor used for any purpose other than that for which it is specifically furnished without prior consent.

All dimensions in millimetres

**GLASS
VICE**

Vertical Battens

1200mm High Top Fixed into Concrete

Section - Top Fix Concrete 1.2M Residential Barrier - 300 Top Rail

Date: 10 April 2019

Scale: 1 : 10

Issue 01

www.glassvice.com

Phone +64 9 414 6565

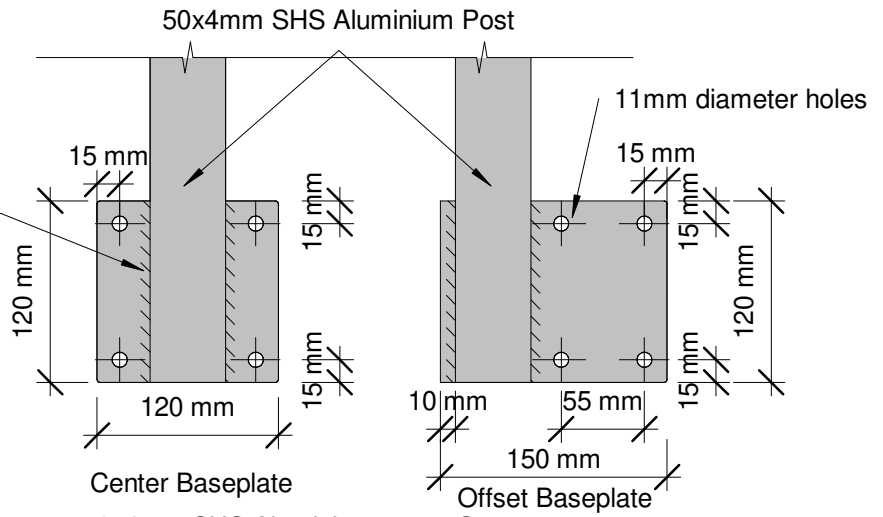
info@glassvice.com

VB1209_251

12mm Baseplate - 5083-H321,
H116 Alloy Aluminium 120mm long
6mm fillet weld (leg size, equal)
each side of post with 5356 alloy

Note:

Supporting concrete to resist min. horiz.
force of 2.03 kN applied at a height of
780mm above F.F.L at each post and
(but not simultaneously) a vertical force
of 1.36 kN at each post in addition to any
loads not from barrier



Center Baseplate

Offset Baseplate

50x4mm SHS Aluminium posts @
900 centers max. - 6261-T6
Aluminium

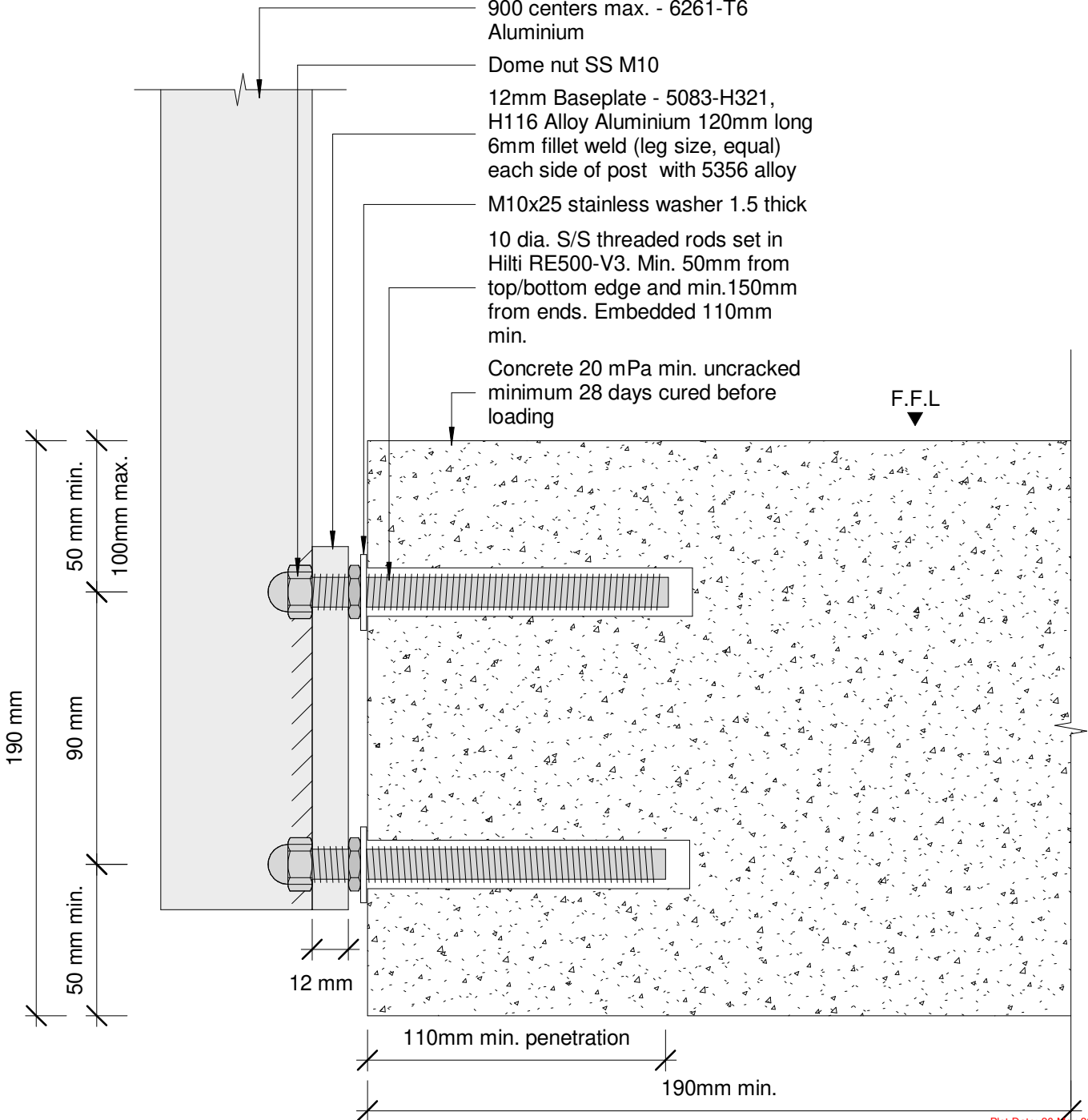
Dome nut SS M10

12mm Baseplate - 5083-H321,
H116 Alloy Aluminium 120mm long
6mm fillet weld (leg size, equal)
each side of post with 5356 alloy

M10x25 stainless washer 1.5 thick

10 dia. S/S threaded rods set in
Hilti RE500-V3. Min. 50mm from
top/bottom edge and min.150mm
from ends. Embedded 110mm
min.

Concrete 20 mPa min. uncracked
minimum 28 days cured before
loading



Plot Date: 20 May 2019 16:44

© 2019. The copyright of this document is the property of Glass Vice Limited and shall not be reproduced, copied, loaned or disposed of directly, or indirectly, nor used for any purpose other than that for which it is specifically furnished without prior consent.

All dimensions in millimetres

**GLASS
VICE**

Vertical Battens

1200mm High Face Fixed into Concrete

Detail - Face Fix Concrete 1.2M Residential Barrier - 300 Top Rail

Date: 10 April 2019

Scale: As indicated

Issue 01

www.glassvice.com

Phone +64 9 414 6565

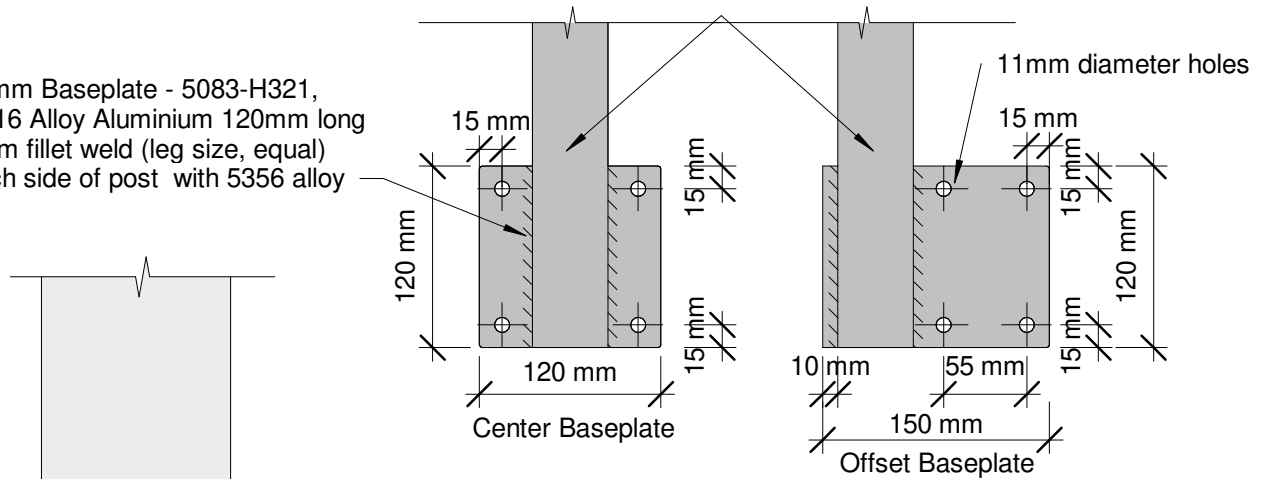
info@glassvice.com

VB1209_FFC_120

12mm Baseplate - 5083-H321,
H116 Alloy Aluminium 120mm long
6mm fillet weld (leg size, equal)
each side of post with 5356 alloy

50x4mm SHS Aluminium Post

11mm diameter holes



50x4mm SHS Aluminium posts @
900 centers max. - 6261-T6
Aluminium

12mm Baseplate - 5083-H321,
H116 Alloy Aluminium 120mm long
6mm fillet weld (leg size, equal)
each side of post with 5356 alloy

Timber decking

F.F.L.

100mm max. from F.F.L.
to first fastener

90 mm

Stainless steel M10 Threaded Rod
bolted through with nut and
washers

Steel framing to resist min.
horizontal load of 2.03kN in or out
applied at a height of 780mm
above F.F.L. and (but not
simultaneously) a vertical force of
1.36 kN at each post, in addition to
any loads not from barrier

12 mm

Plot Date: 20 May 2019 16:44

© 2019. The copyright of this document is the property of Glass Vice Limited and shall not be reproduced, copied, loaned or disposed of directly, or indirectly, nor used for any purpose other than that for which it is specifically furnished without prior consent.

All dimensions in millimetres

GLASS
VICE

Vertical Battens

1200mm High Face Fixed into Steel Beam

Detail - Face Fix Steel Beam 1.2M Residential Barrier - 300 Top Rail

Date: 10 April 2019

Scale: As indicated

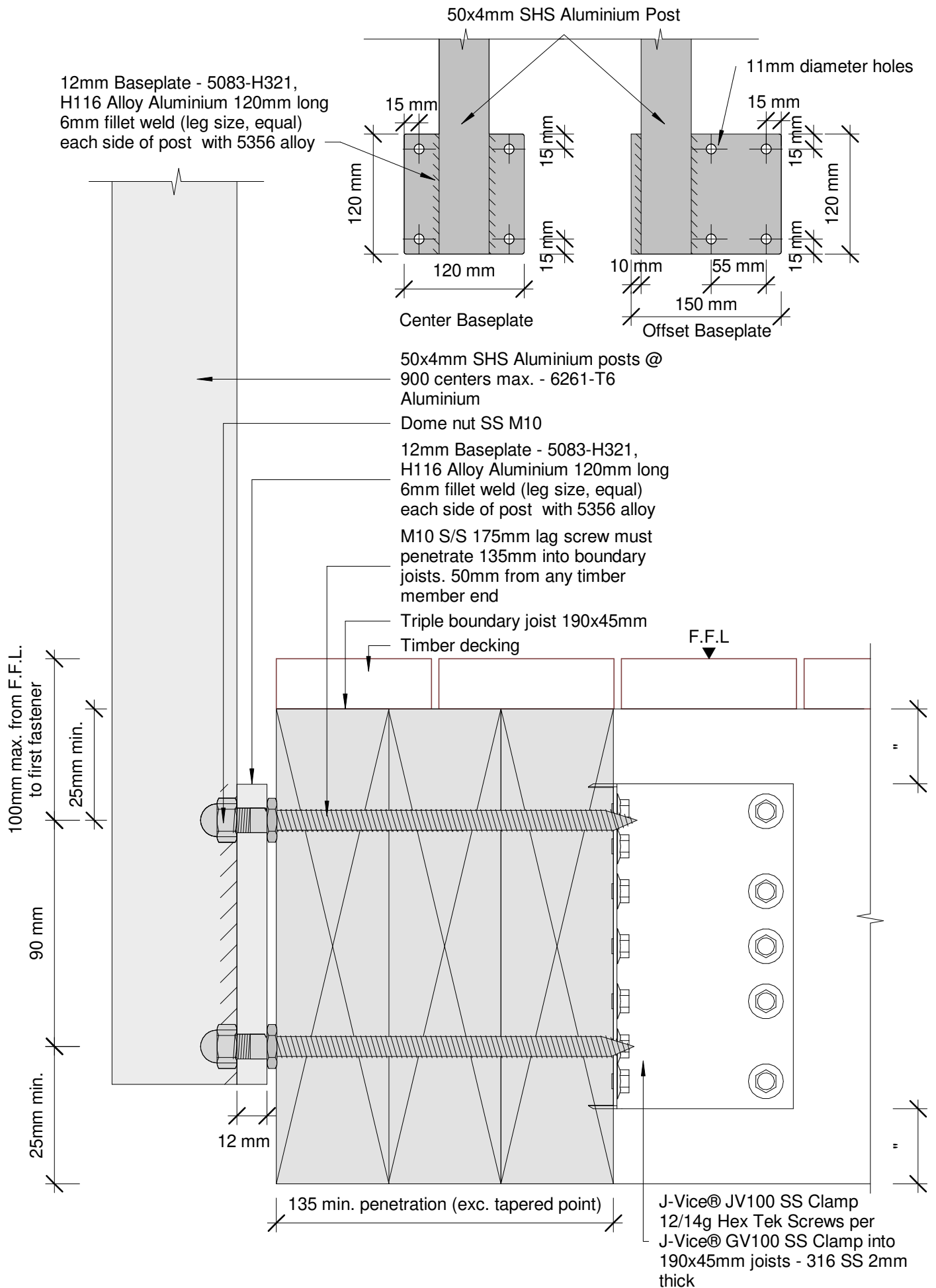
Issue 01

www.glassvice.com

Phone +64 9 414 6565

info@glassvice.com

VB1209_FFS_113



Plot Date: 20 May 2019 16:44

© 2019. The copyright of this document is the property of Glass Vice Limited and shall not be reproduced, copied, loaned or disposed of directly, or indirectly, nor used for any purpose other than that for which it is specifically furnished without prior consent.

All dimensions in millimetres



Vertical Battens

1200mm High Face Fixed into Timber

Detail - Face Fix 190 Triple Joist 1.2M Residential Barrier - 300 Top Rail

Date: 10 April 2019

Scale: As indicated

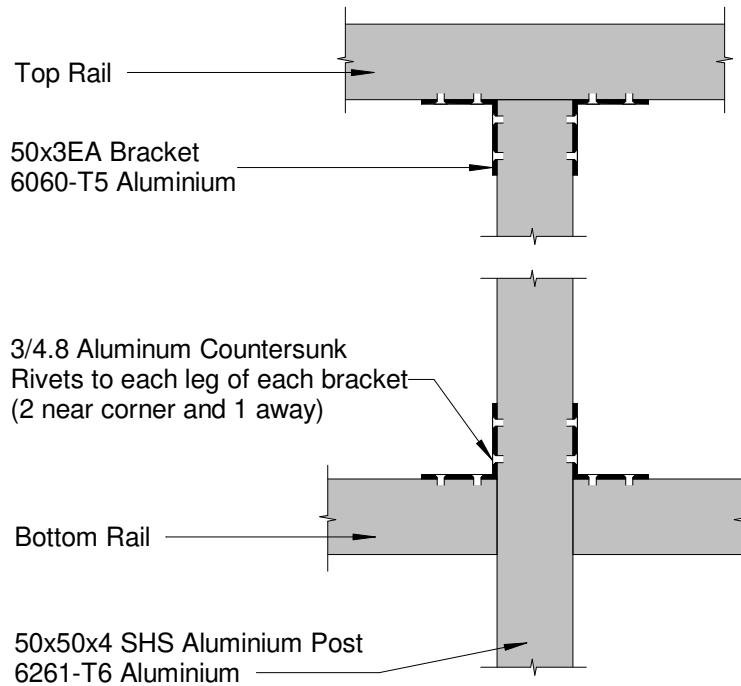
Issue 01

www.glassvice.com

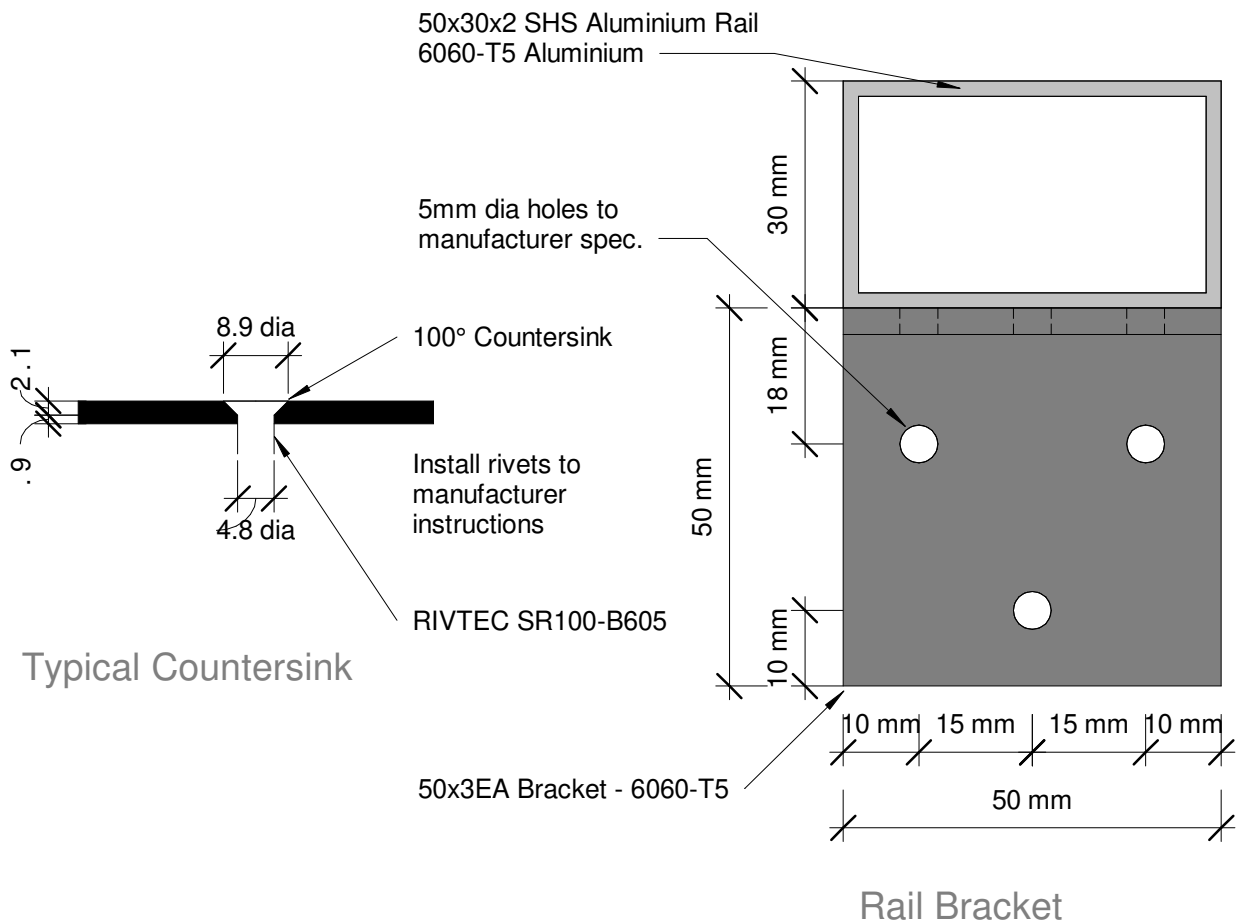
Phone +64 9 414 6565

info@glassvice.com

VB1209_FFT_170



Rail - Post Connection



Plot Date: 20 May 2019 16:44

© 2019. The copyright of this document is the property of Glass Vice Limited and shall not be reproduced, copied, loaned or disposed of directly, or indirectly, nor used for any purpose other than that for which it is specifically furnished without prior consent.

All dimensions in millimetres

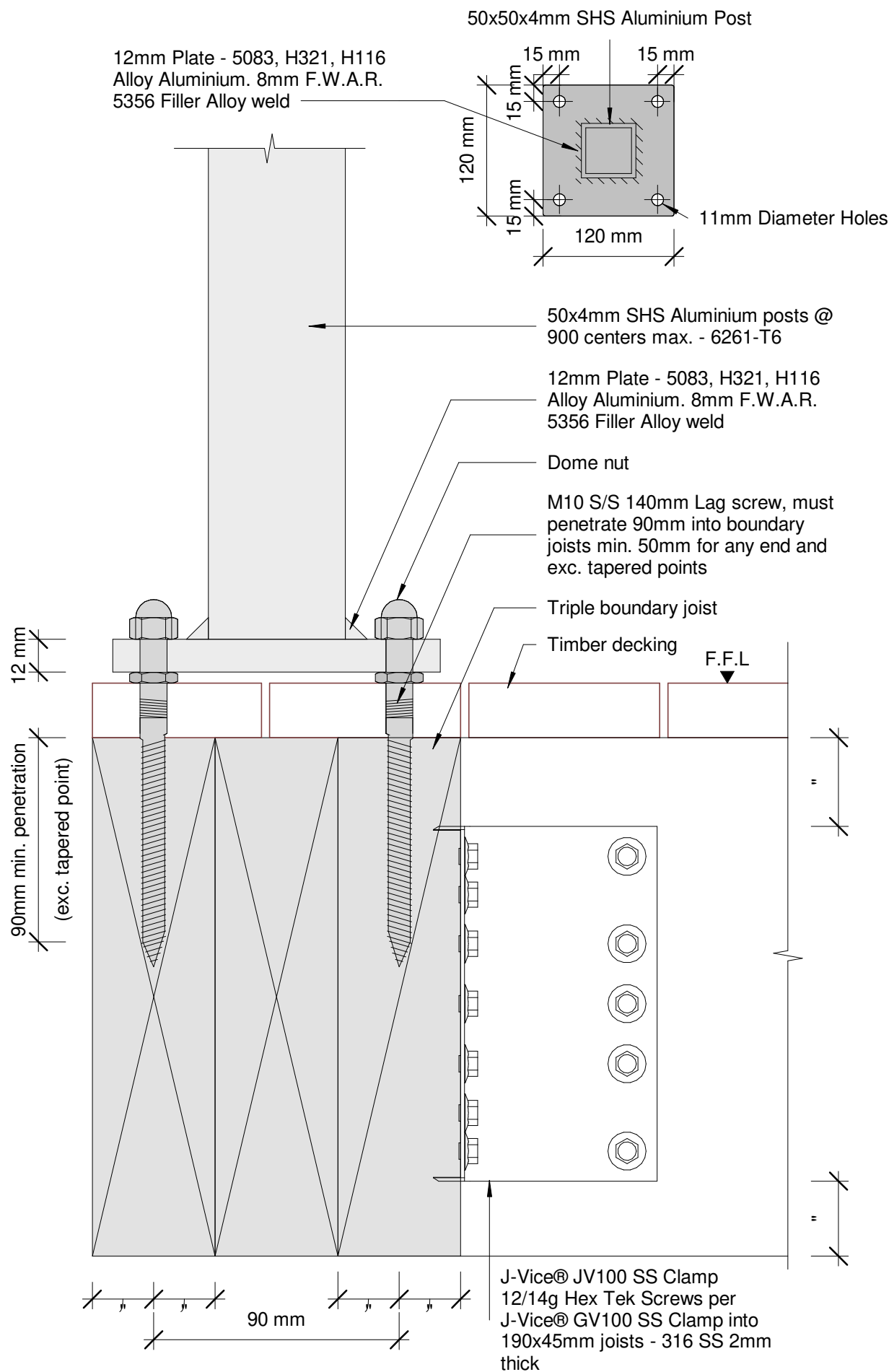


Vertical Battens
Top/Side Fix 1200mm
Detail - Rail - Post Connection

Date: 10 April 2019
Scale: As indicated
Issue 01

www.glassvice.com
Phone +64 9 414 6565
info@glassvice.com

VB1209_RPC_110



Plot Date: 20 May 2019 16:44

© 2019. The copyright of this document is the property of Glass Vice Limited and shall not be reproduced, copied, loaned or disposed of directly, or indirectly, nor used for any purpose other than that for which it is specifically furnished without prior consent.

All dimensions in millimetres

GLASS
VICE®

Vertical Battens

1200mm High Top Fixed into Timber

Detail - Top Fix 190 Triple Joist 1.2M Residential Barrier - 300 Top Rail

Date: 10 April 2019
Scale: As indicated
Issue 01

www.glassvice.com
Phone +64 9 414 6565
info@glassvice.com

VB1209_TFT_110