

# GIB® UltraFlex

High Impact Corner Mould

# GIB® UltraFlex Lite

Corner Mould

Internal & External Structural Drywall Corner Finishing System



- Engineered to withstand:
  - Minor Framing Movement
  - Settling
  - Most Seismic Movement
  - Temperature Variation
- Wet strength – No paper roll up even when joint compound is over-worked
- Scuff and sanding resistant paper

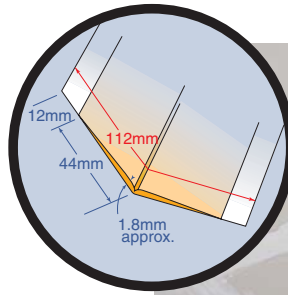
The centre membrane of GIB® Ultraflex is made of incredibly strong, impact-resistant plastic. The plastic not only acts as a shock absorber for all types of structural movement, its tapered design with a paper flap eliminates the need for excessive compound on the corner, eliminating chips and cracks.

## GIB® UltraFlex

### High Impact Corner Mould

Internal and External Drywall Corner Finishing System

- ▀ Suitable for all off-angles
- ▀ Ultra-thin edge for 1-step installation and easy finishing
- ▀ Crack resistant
- ▀ Available in 30m rolls. Cut to length as required

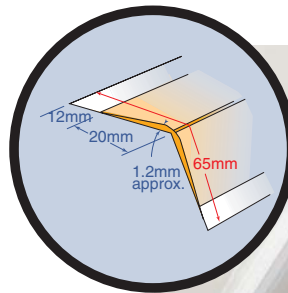


## GIB® UltraFlex Lite

### Corner Mould

Internal and External Drywall Corner Finishing System

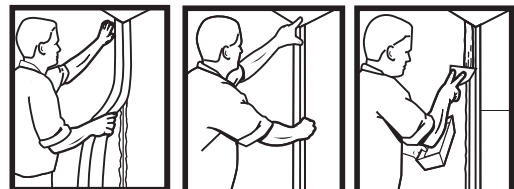
- ▀ Suitable for all off-angles
- ▀ Ultra-thin edge for 1-step installation and easy finishing
- ▀ Crack resistant
- ▀ Perforated edges, allow faster drying
- ▀ Available in 30m rolls. Cut to length as required



### INSTALLATION INSTRUCTIONS

Winstone Wallboards recommend installation of GIB® UltraFlex with GIB Tradeset® 20, 45 or 90.

1. Using a 100 - 150mm broad knife, apply compound to drywall slightly beyond where the edge of the GIB® UltraFlex will be located.
2. Place the GIB® UltraFlex on to the wall and press into position.
3. Embed trim by running the broad knife over it with even pressure to squeeze out excess compound. Using the same broad knife, skim over the GIB® UltraFlex with the compound.
4. Leave to set and dry.
5. Using a 150 - 200mm broad knife, skim over the GIB® UltraFlex once more.
6. Leave to set and dry.
7. Apply a finishing compound such as GIB Plus 4® or GIB ProMix®.
8. Allow to dry. Sand and decorate.



NB: GIB® UltraFlex is a pre-finished product. Press into compound and feather the edges. Keep compound clear of the corner.

For further information contact

#### Winstone Wallboards Limited

37 Felix Street, P O Box 12 256, Penrose, Auckland, New Zealand  
 Phone: 64-9-633 0100 Fax: 64-9-633 0101 Internet website: [www.gib.co.nz](http://www.gib.co.nz)  
 GIB® - Call Free: 0800 100 442, Free Facsimile: 0800 229 222

