

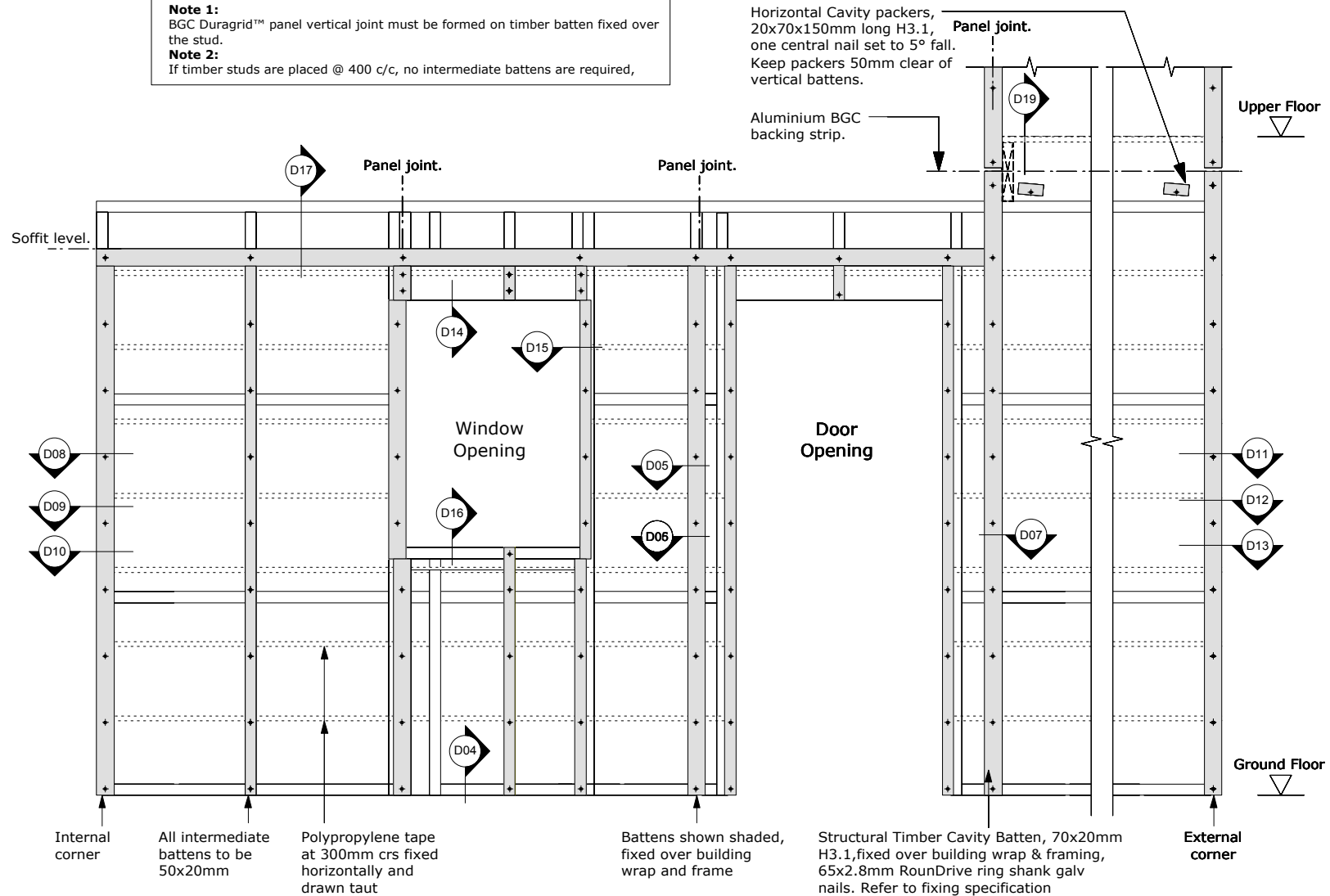
BGC

Fibre Cement

Note 1:
BGC Duragrid™ panel vertical joint must be formed on timber batten fixed over the stud.
Note 2:
If timber studs are placed @ 400 c/c, no intermediate battens are required,

Horizontal Cavity packers, 20x70x150mm long H3.1, one central nail set to 5° fall. Keep packers 50mm clear of vertical battens.

Aluminium BGC backing strip.



PROFILE BGC Duragrid™

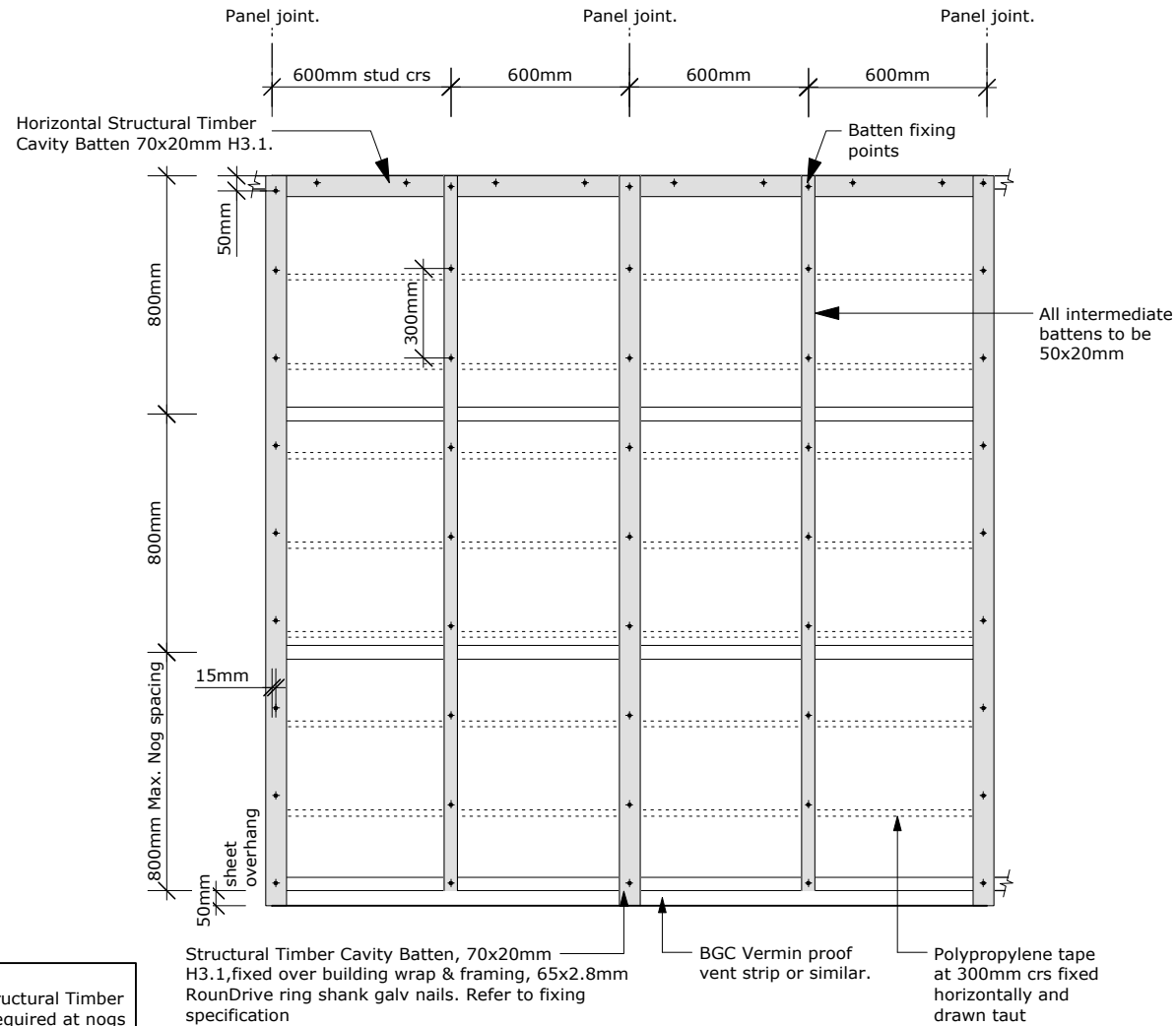
DETAIL Framing Setout

DATE Nov 2011
SCALE 1:25 @ A4

DETAIL NO. D00

BGC

Fibre Cement



BGC Duragrid™ Batten Fixing Setout

PROFILE BGC Duragrid™

DATE Nov 2011

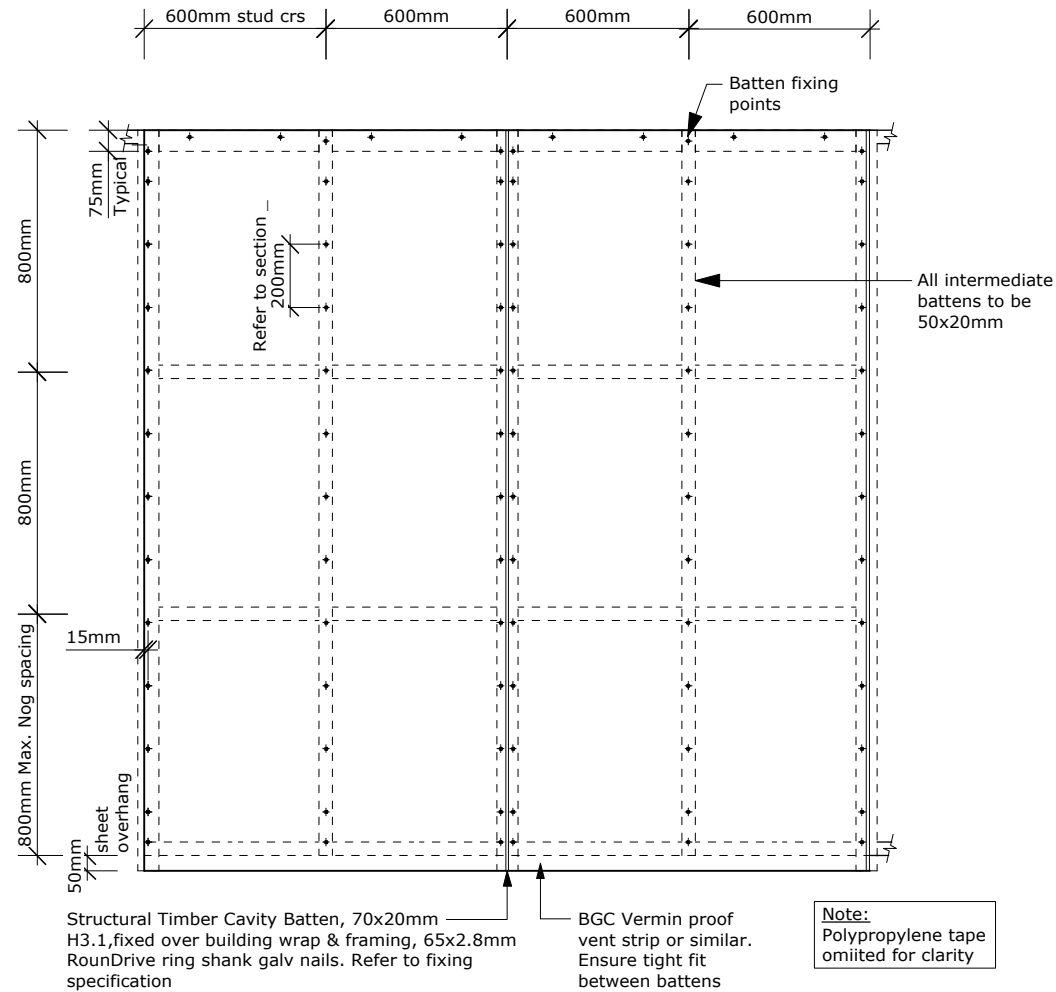
DETAIL Batten Fixing Setout

SCALE 1:25 @ A4

DETAIL NO. D01

BGC

Fibre Cement



BGC Duragrid™ Batten Fixing Setout

PROFILE BGC Duragrid™

DATE Nov 2011

DETAIL Sheet Fixing Setout

SCALE 1:25 @ A4

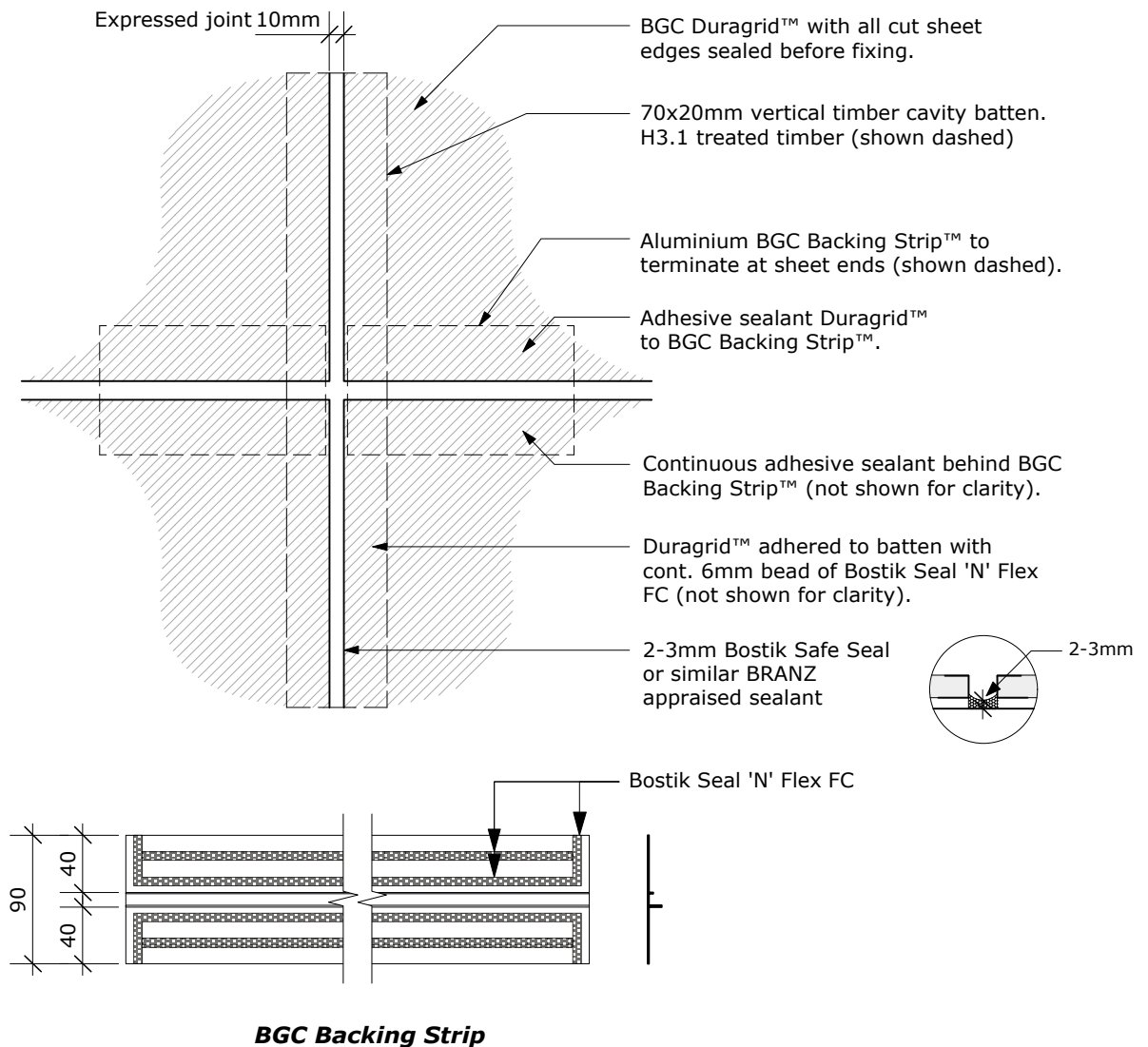
DETAIL NO. D02

BGC

Fibre Cement

Cavity Batten Note:

Refer to cavity batten layout for batten sizes, types, spacings & fixings.

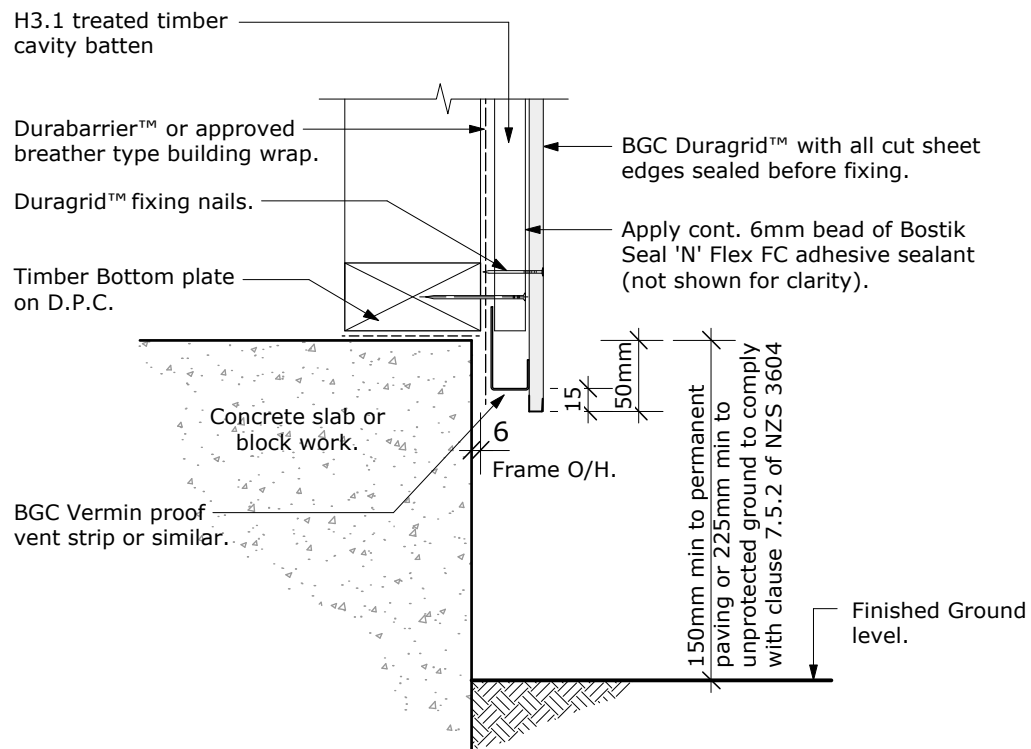


PROFILE **BGC Duragrid™**
DETAIL **Sheet Junction Elevation**

DATE Nov 2011
SCALE 1:5 @ A4
DETAIL NO. **D 03**

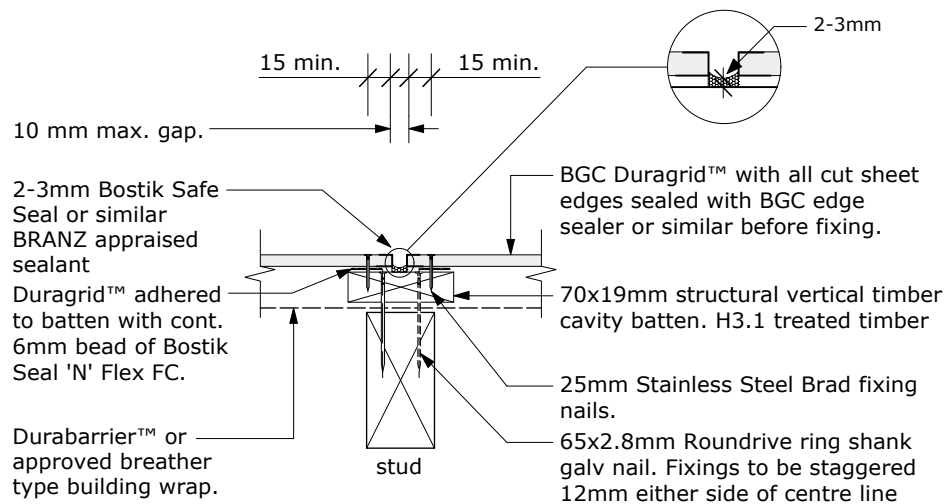
Cavity Batten Note:

Refer to cavity batten layout for batten sizes, types, spacings & fixings.

PROFILE **BGC Duragrid™**DATE **Nov 2011**DETAIL **Foundation Detail**SCALE **1:5 @ A4**DETAIL NO. **D 04**

Cavity Batten Note:

Refer to cavity batten layout for batten sizes, types, spacings & fixings.

PROFILE **BGC Duragrid™**

DATE Nov 2011

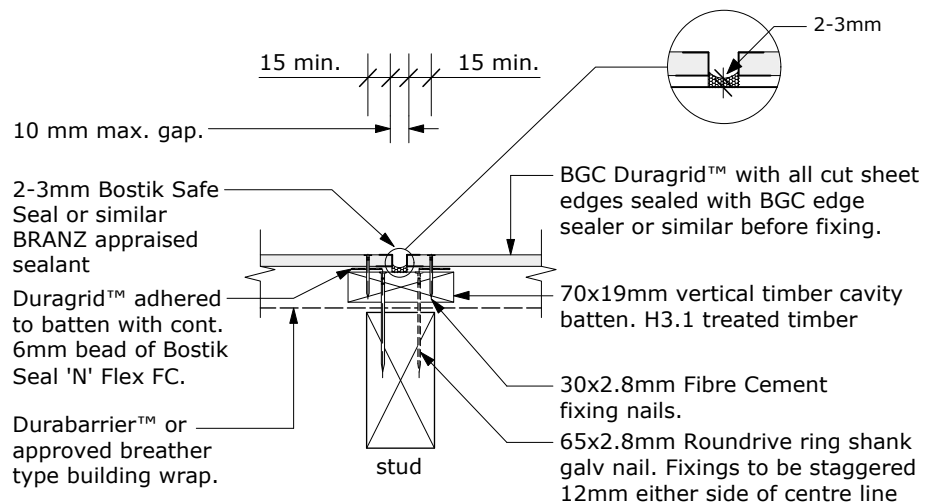
DETAIL **Vertical Express Joint - Brad fixing**

SCALE 1:5 @ A4

DETAIL NO. **D 05**

Cavity Batten Note:

Refer to cavity batten layout for batten sizes, types, spacings & fixings.

PROFILE **BGC Duragrid™**

DATE Nov 2011

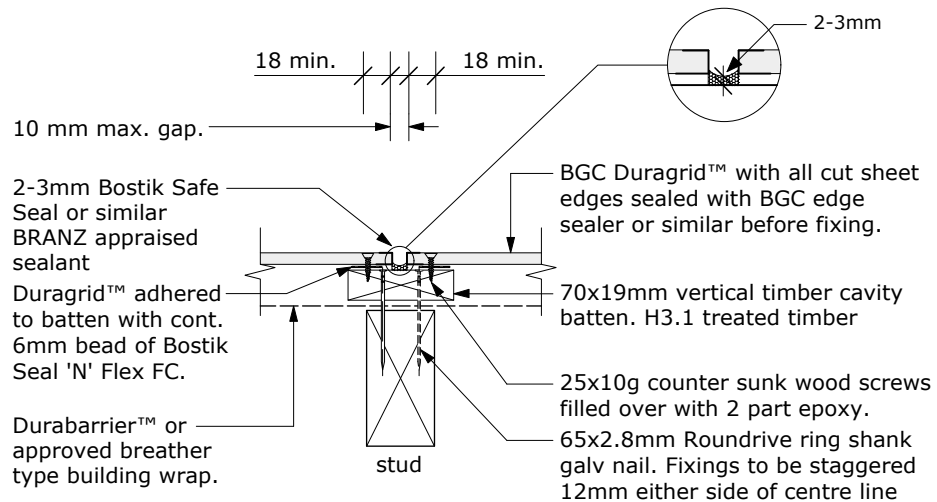
DETAIL **Vertical Express Joint - Nail fixing**

SCALE 1:5 @ A4

DETAIL NO. **D 06**

Cavity Batten Note:

Refer to cavity batten layout for batten sizes, types, spacings & fixings.

PROFILE **BGC Duragrid™**

DATE Nov 2011

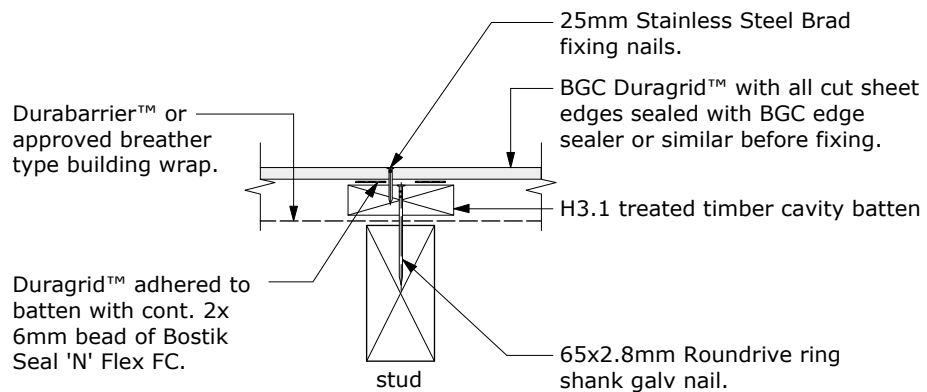
DETAIL **Vertical Express Joint - Screw fixing**

SCALE 1:5 @ A4

DETAIL NO. **D 07**

BGC**Fibre Cement****Cavity Batten Note:**

Refer to cavity batten layout for batten sizes, types, spacings & fixings.

PROFILE **BGC Duragrid™**

DATE Nov 2011

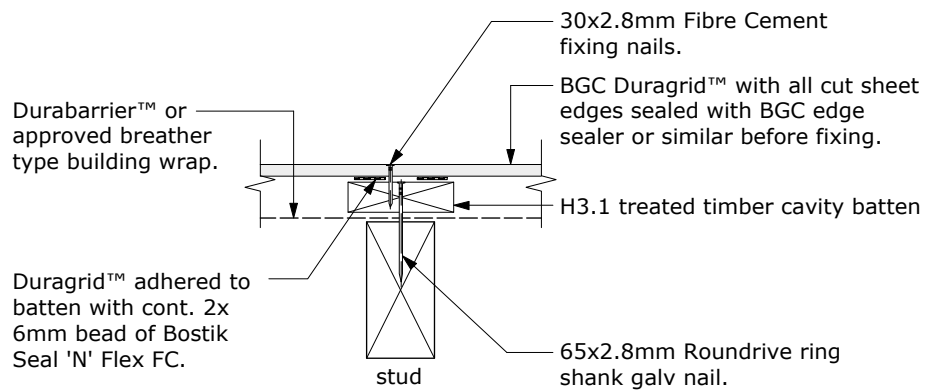
DETAIL Intermediate Stud fixing - Brad fixing

SCALE 1:5 @ A4

DETAIL NO. **D 08**

Cavity Batten Note:

Refer to cavity batten layout for batten sizes, types, spacings & fixings.



PROFILE **BGC Duragrid™**

DETAIL **Intermediate Stud fixing - Nail fixing**

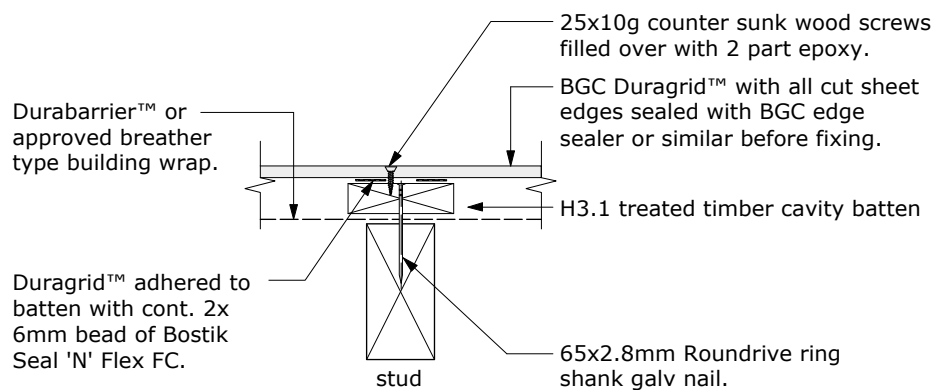
DATE **Nov 2011**

SCALE **1:5 @ A4**

DETAIL NO. **D 09**

Cavity Batten Note:

Refer to cavity batten layout for batten sizes, types, spacings & fixings.



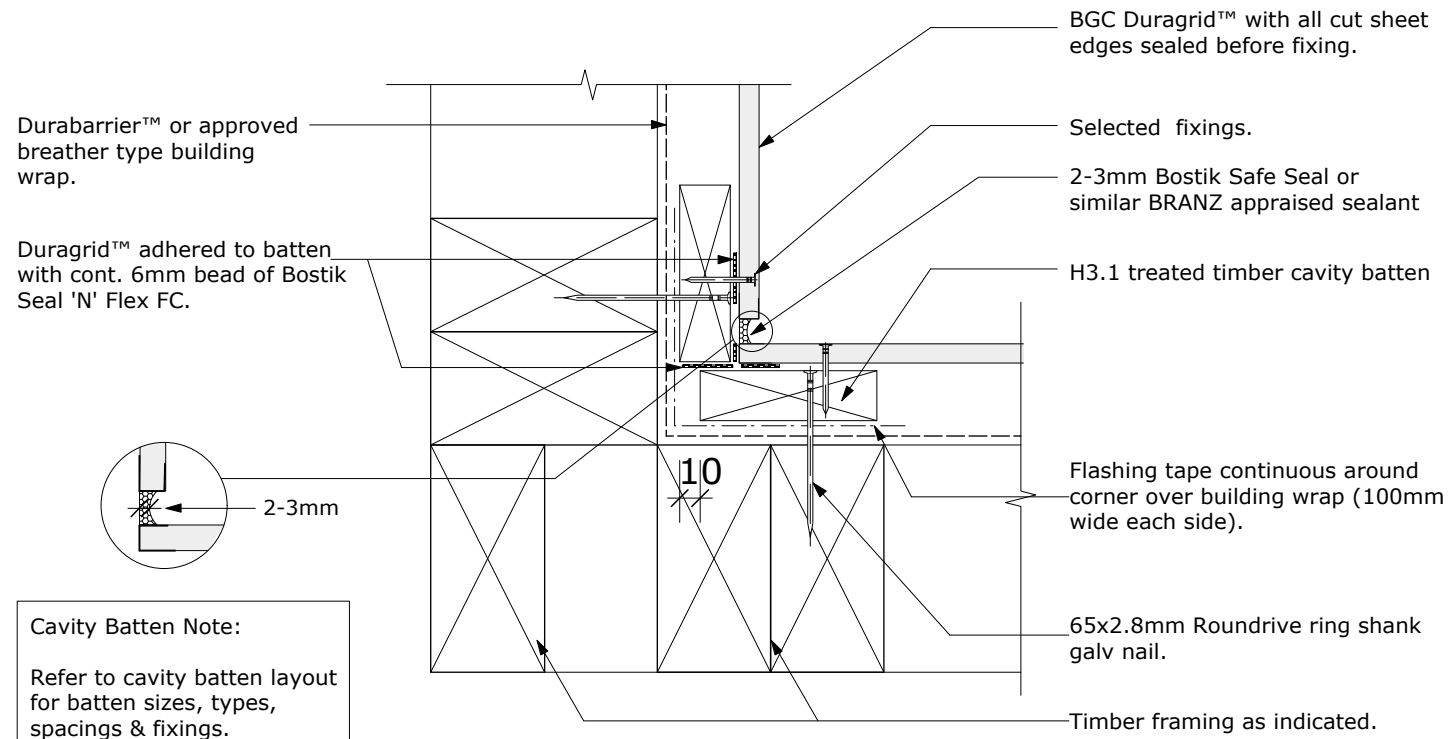
PROFILE **BGC Duragrid™**

DATE Nov 2011

DETAIL **Intermediate Stud fixing - Screw fixing**

SCALE 1:5 @ A4

DETAIL NO. **D 10**

PROFILE **BGC Duragrid™**DATE **Nov 2011**DETAIL **Internal Corner**SCALE **1:3 @ A4**DETAIL NO. **D 11**

BGC**Fibre Cement****Cavity Batten Note:**

Refer to cavity batten layout for batten sizes, types, spacings & fixings.

BGC Duragrid™ with all cut sheet edges sealed before fixing.

Flashing flashing tape continuous around corner over building wrap (100mm wide each side).

H3.1 treated timber cavity batten

2-3mm Bostik Safe Seal or similar BRANZ appraised sealant

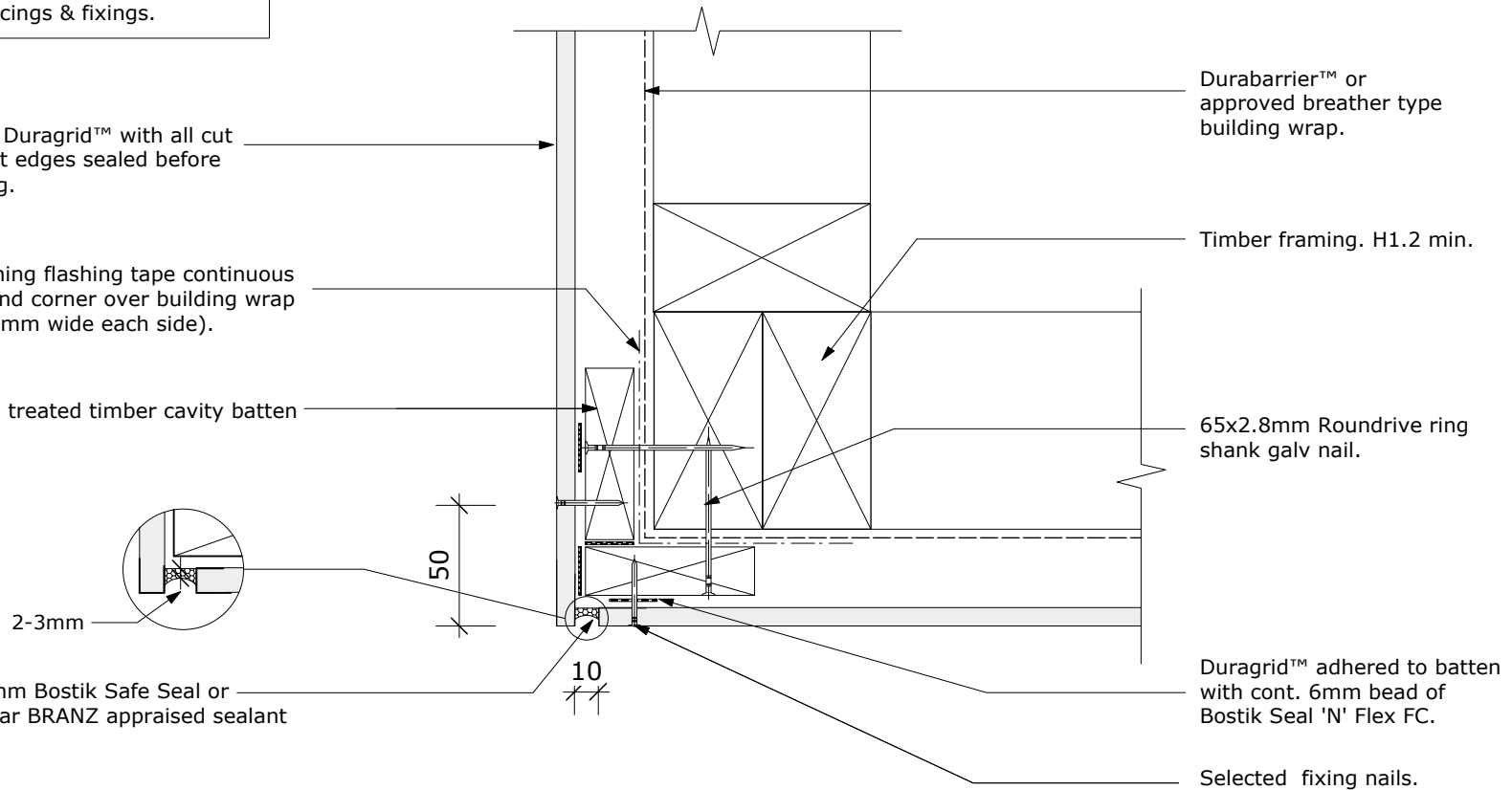
Durabarrier™ or approved breather type building wrap.

Timber framing. H1.2 min.

65x2.8mm Roundrive ring shank galv nail.

Duragrid™ adhered to batten with cont. 6mm bead of Bostik Seal 'N' Flex FC.

Selected fixing nails.



PROFILE BGC Duragrid™

DETAIL External Corner

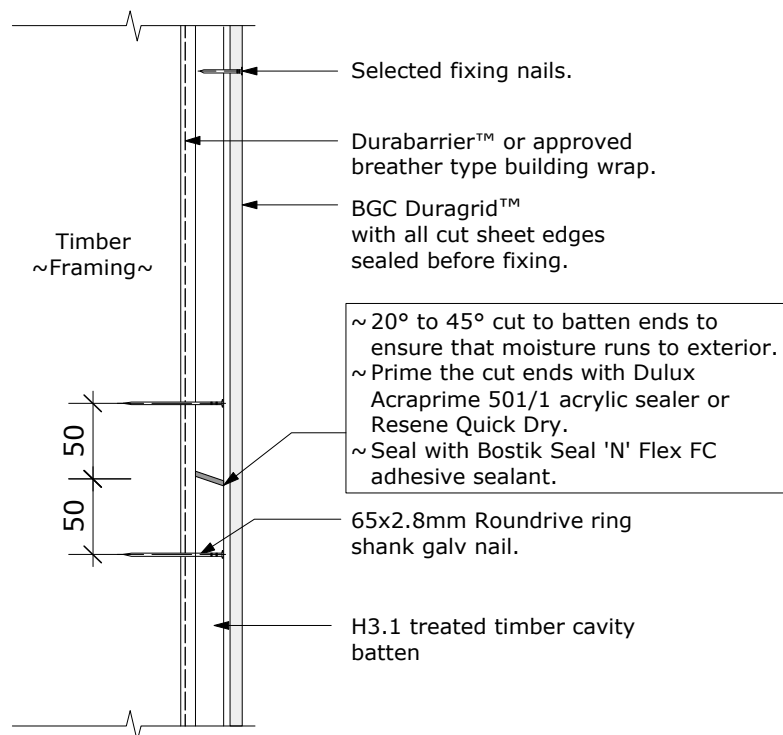
DATE Nov 2011

SCALE 1:3 @ A4

DETAIL NO. D 12

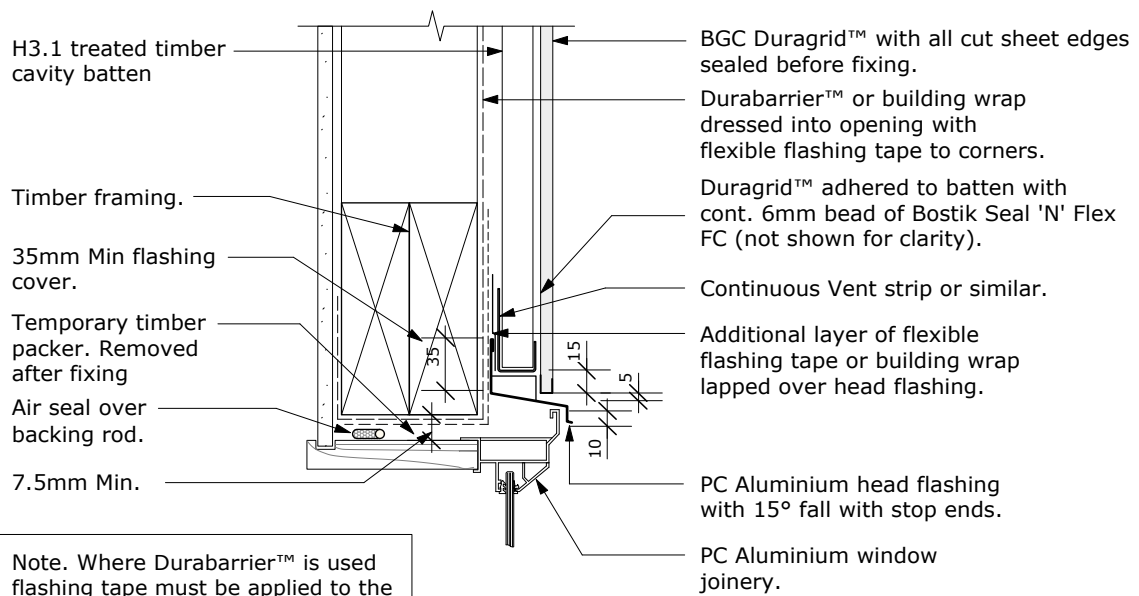
BGC**Fibre Cement****Cavity Batten Note:**

Refer to cavity batten layout for batten sizes, types, spacings & fixings.

PROFILE **BGC Duragrid™**DATE **Nov 2011**DETAIL **Joining of Structural Batten**SCALE **1:5 @ A4**DETAIL NO. **D 13**

Cavity Batten Note:

Refer to cavity batten layout for batten sizes, types, spacings & fixings.



Note. Where DurabARRIER™ is used flashing tape must be applied to the entire opening

PROFILE **BGC Duragrid™**

DETAIL **Window Head**

DATE **Nov 2011**

SCALE **1:5 @ A4**

DETAIL NO. **D 14**

Cavity Batten Note:

Refer to cavity batten layout for batten sizes, types, spacings & fixings.

DurrabARRIER™ or building wrap and flexible flashing tape. Flexible flashing tape to be continuous along sill, 100mm min. up each jamb and 50mm onto face of building wrap.

Timber framing.

DurabARRIER™ or approved breather type building wrap.

BGC Duragrid™ with all cut sheet edges sealed before fixing.

Duragrid™ adhered to batten with cont. 6mm bead of Bostik Seal 'N' Flex FC (not shown for clarity).

Foam seal with tightly finished against cladding.

Air seal over backing rod.

H1.2 timber packer.

7.5mm Min.

H3.1 treated timber cavity batten

Aluminium window joinery.

Line of head flashing over.

20
10mm Min.
Cover

10mm Min cover to Duragrid™ by aluminium window joinery.

20mm Min overhang of head flashing.

Note. Where DurabARRIER™ is used flashing tape must be applied to the entire opening

PROFILE **BGC Duragrid™**

DETAIL **Window Jamb**

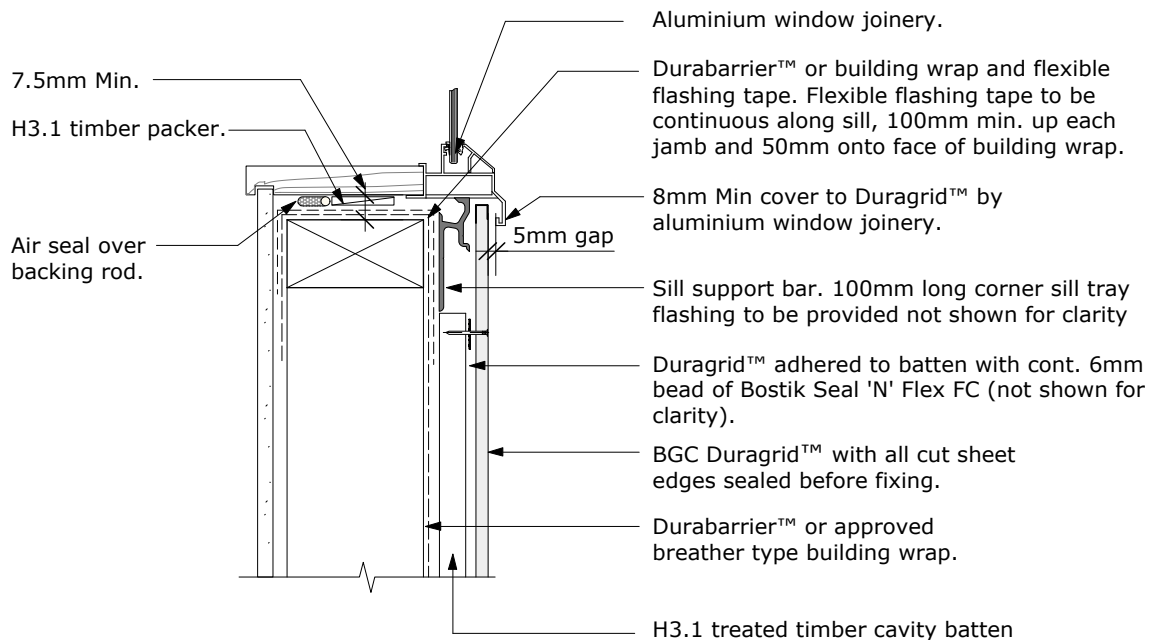
DATE **Nov 2011**

SCALE **1:5 @ A4**

DETAIL NO. **D 15**

Cavity Batten Note:

Refer to cavity batten layout for batten sizes, types, spacings & fixings.



Note. Where DurabARRIER™ is used flashing tape must be applied to the entire opening

PROFILE **BGC Duragrid™**

DETAIL **Window Sill**

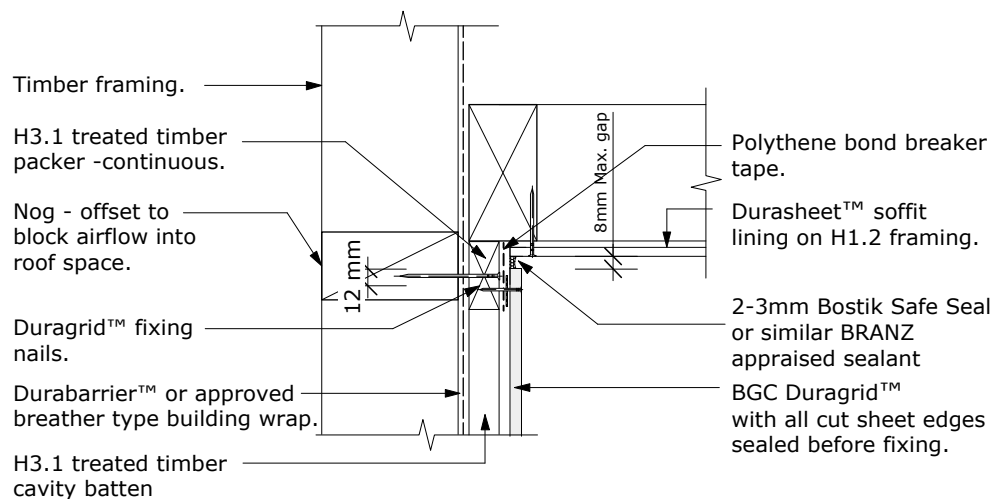
DATE **Nov 2011**

SCALE **1:5 @ A4**

DETAIL NO. **D 16**

Cavity Batten Note:

Refer to cavity batten layout for batten sizes, types, spacings & fixings.



PROFILE **BGC Duragrid™**

DETAIL **Soffit Detail**

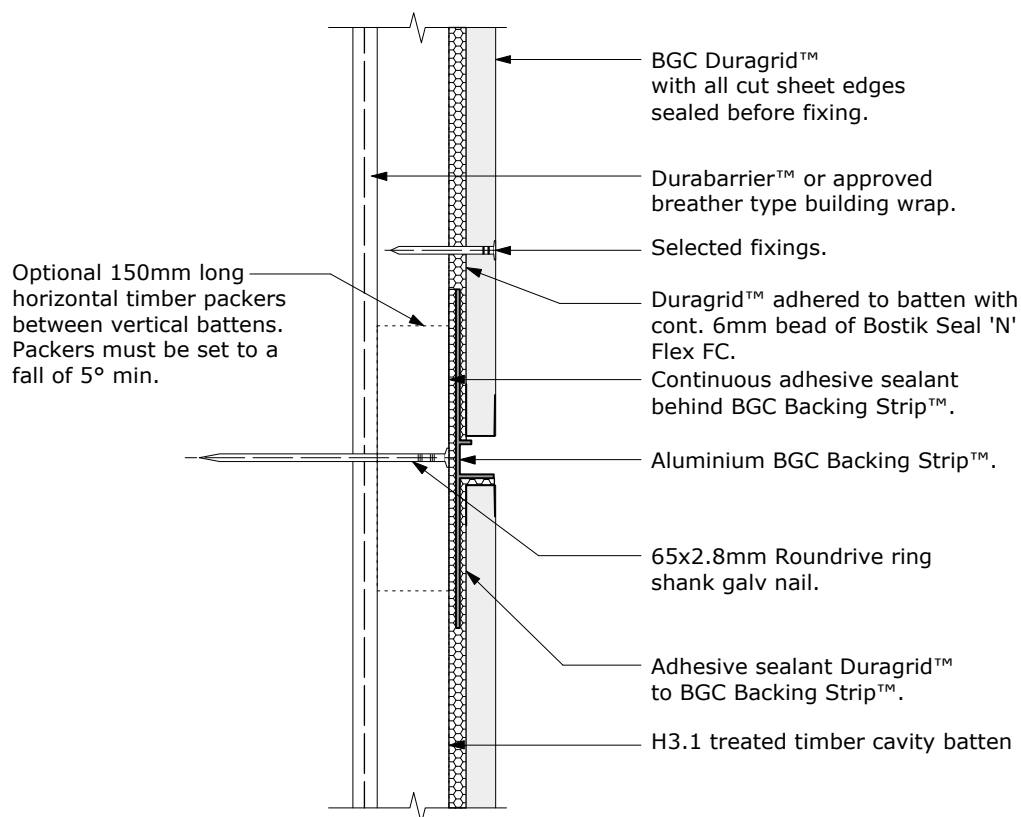
DATE **Nov 2011**

SCALE **1:5 @ A4**

DETAIL NO. **D 17**

Cavity Batten Note:

Refer to cavity batten layout for batten sizes, types, spacings & fixings.



NOTE: ONLY suitable for up to 2 storeys in height. For cavities over 2 storeys in height, refer to D19

PROFILE **BGC Duragrid™**

DATE Nov 2011

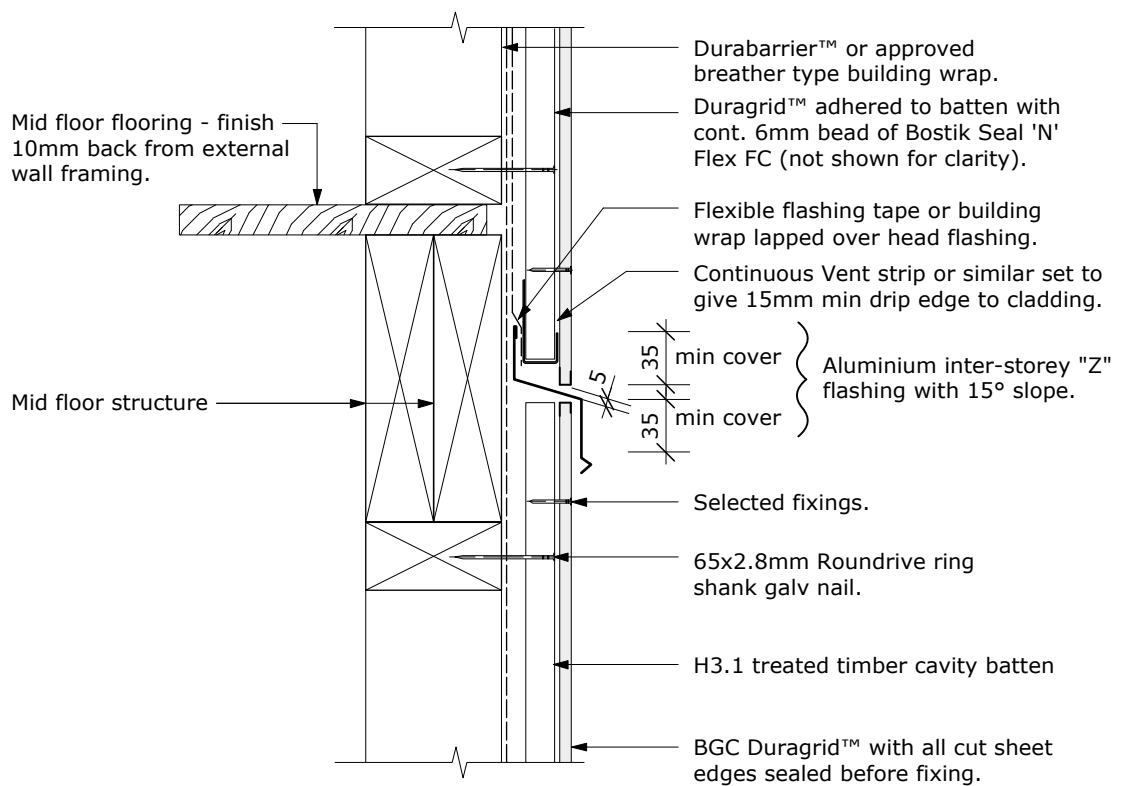
DETAIL **Backing Strip™ Detail - Section**

SCALE 1:2 @ A4

DETAIL NO. **D 18**

Cavity Batten Note:

Refer to cavity batten layout for batten sizes, types, spacings & fixings.



Note: Drained joints must be used to limit cavities to maximum 2 storeys or 7m in height in accordance with NZBC acceptable solution E2/AS1 Paragraph 9.1.9.4

PROFILE BGC Duragrid™

DATE Nov 2011

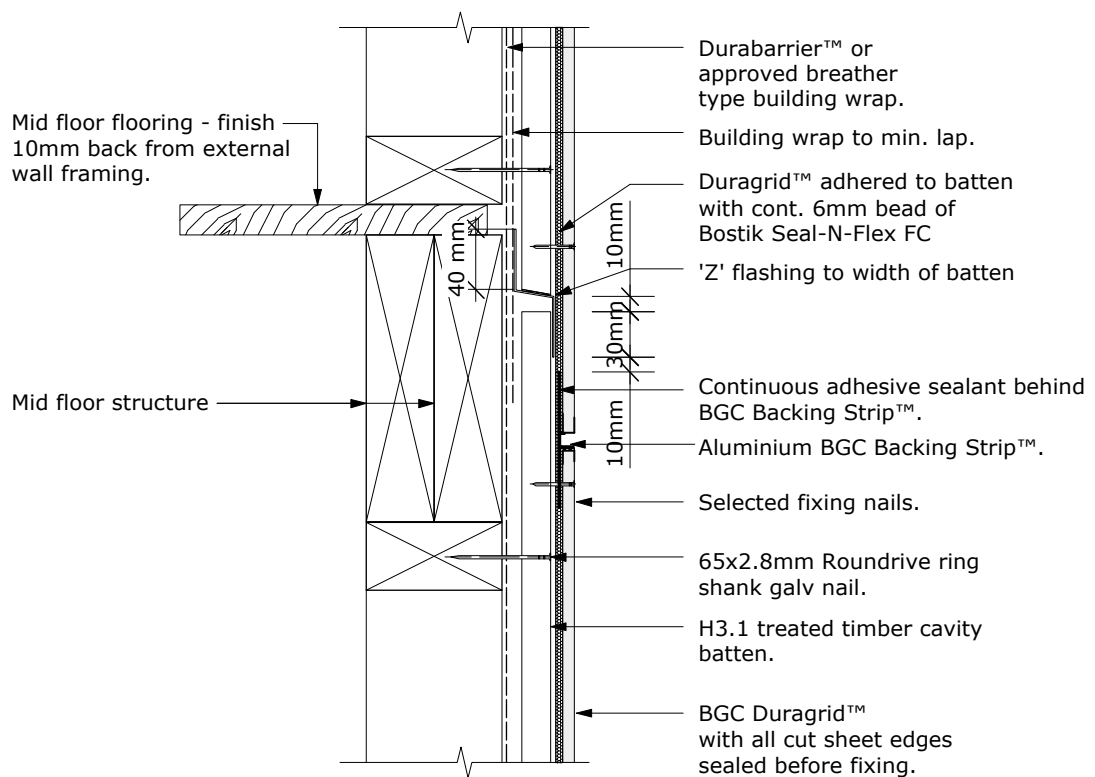
DETAIL Cavity Drain Express Joint at Floor Joist

SCALE 1:5 @ A4

DETAIL NO. D 19

Cavity Batten Note:

Refer to cavity batten layout for batten sizes, types, spacings & fixings.



NOTE: ONLY suitable for up to 2 storeys in height. For cavities over 2 storeys in height, refer to D19

PROFILE **BGC Duragrid™**

DATE Nov 2011

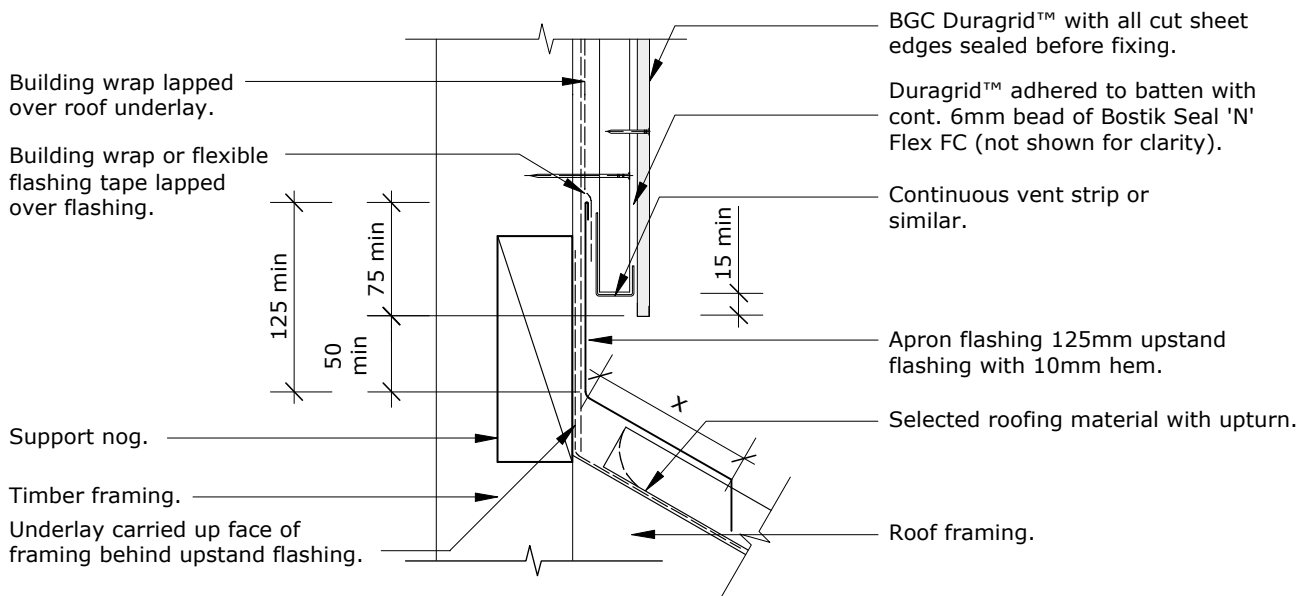
DETAIL **Horizontal Joint Detail**

SCALE 1:5 @ A4

DETAIL NO. **D 20**

Cavity Batten Note:

Refer to cavity batten layout for batten sizes, types, spacings & fixings.



Note:

X = Refer to NZBC E2 / AS1 Table 7 for flashing cover requirements.

PROFILE **BGC Duragrid™**

DETAIL **Apron Roof Flashing**

DATE **Nov 2011**

SCALE **1:5 @ A4**

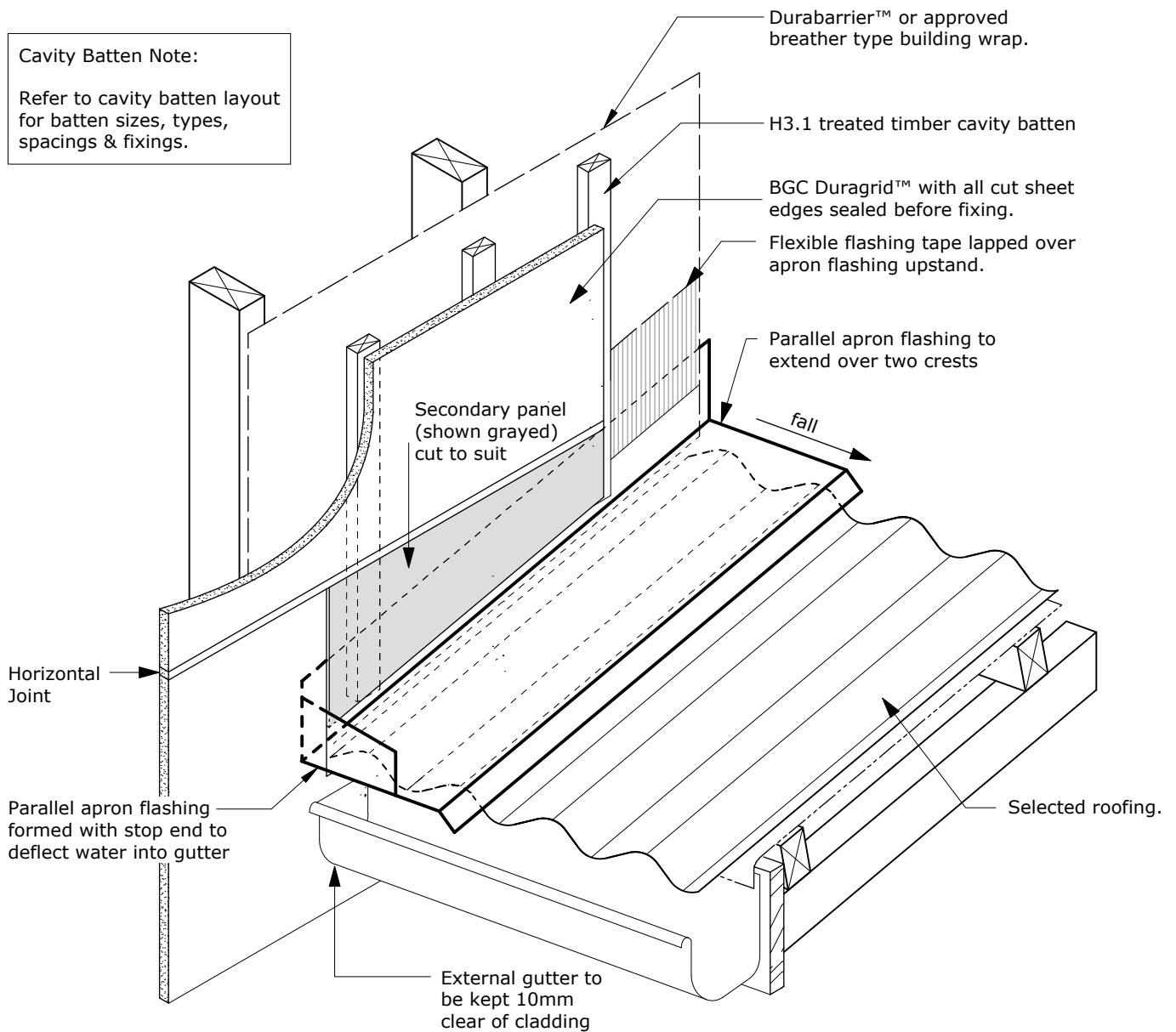
DETAIL NO. **D 21**

BGC

Fibre Cement

Cavity Batten Note:

Refer to cavity batten layout for batten sizes, types, spacings & fixings.



PROFILE **BGC Duragrid™**

DATE Nov 2011

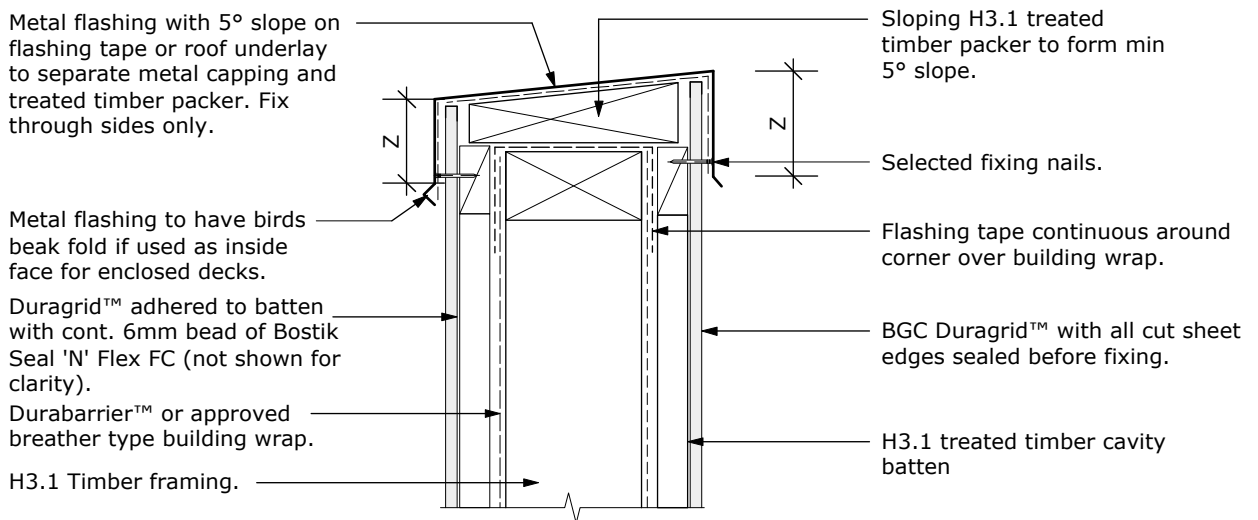
DETAIL **Gutter to Wall Detail**

SCALE 1:5 @ A4

DETAIL NO. **D 22**

Cavity Batten Note:

Refer to cavity batten layout for batten sizes, types, spacings & fixings.

**Note:**

Z = Refer to NZBC E2 / AS1 Table 7 for flashing cover requirements.

PROFILE **BGC Duragrid™**

DETAIL **Parapet Flashing**

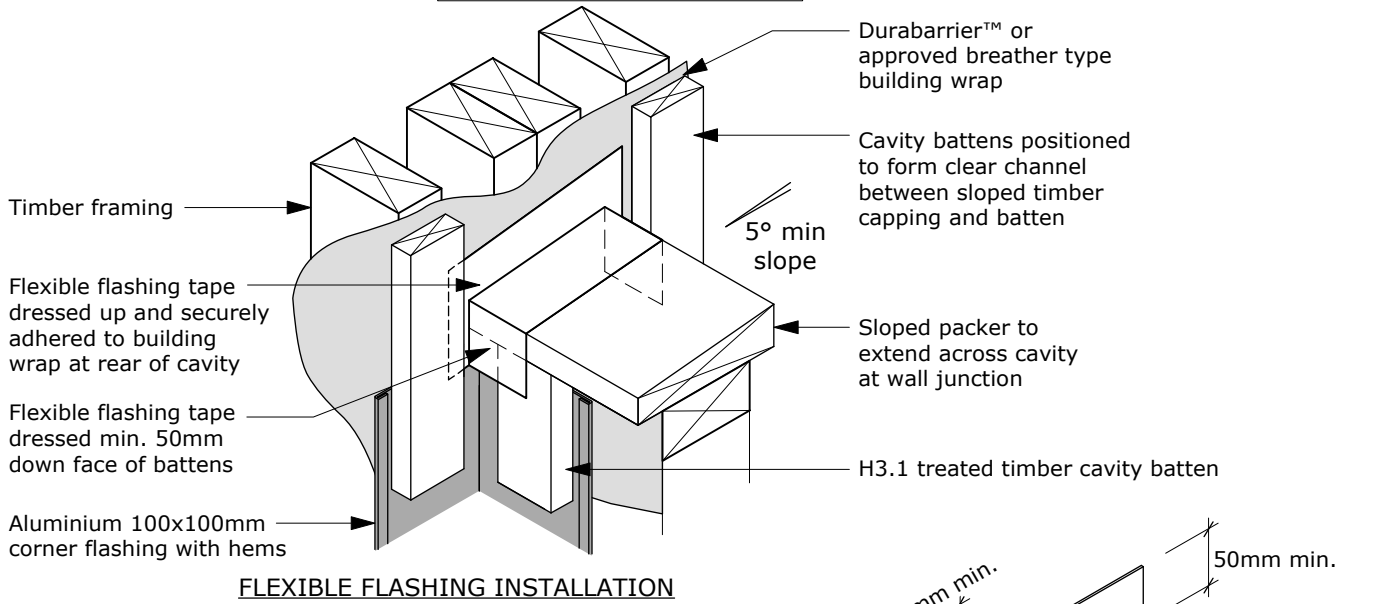
DATE **Nov 2011**

SCALE **1:5 @ A4**

DETAIL NO. **D 23**

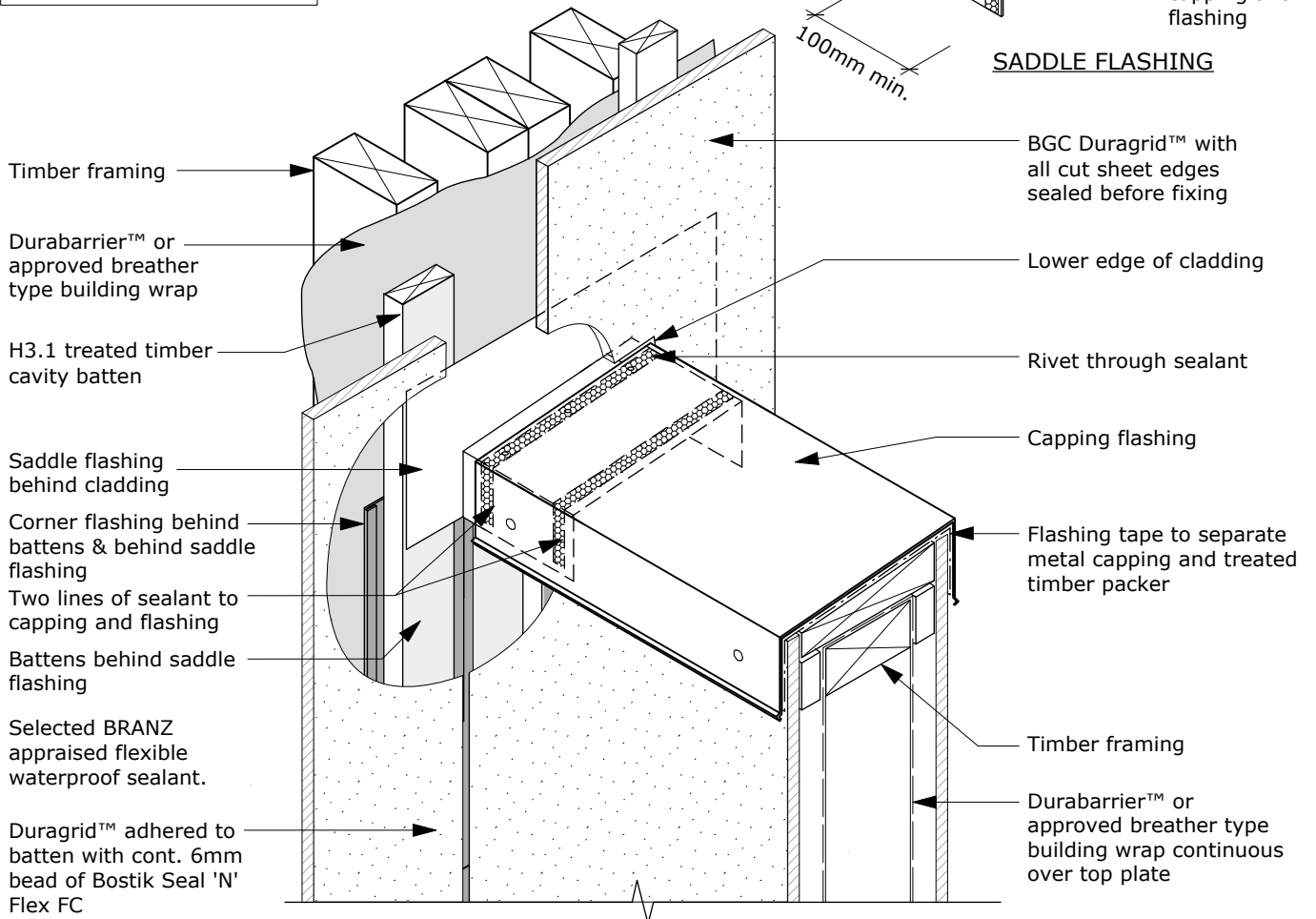
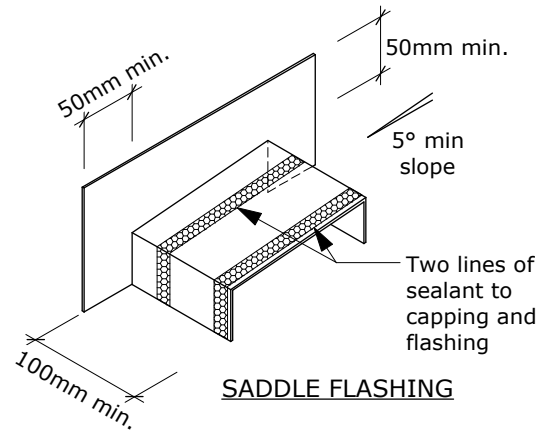
BGC

Fibre Cement



Cavity Batten Note:

Refer to cavity batten layout for batten sizes, types, spacings & fixings.



PROFILE **BGC Duragrid™**

DATE Nov 2011

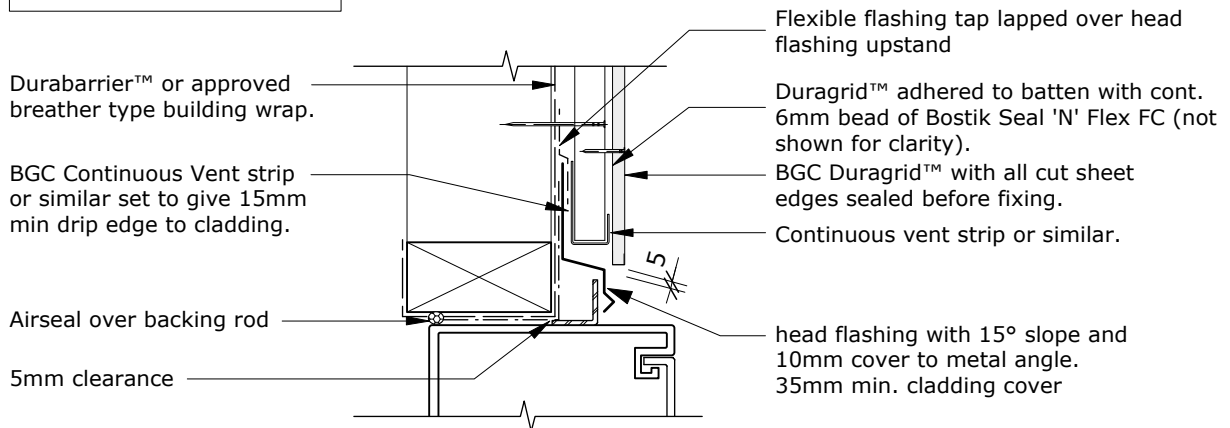
DETAIL **Balustrade to Wall Junction**

SCALE NTS

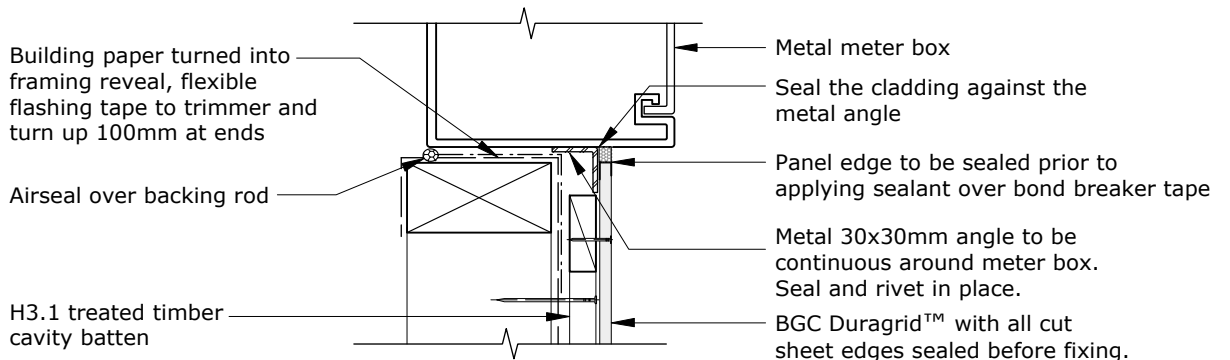
DETAIL NO. **D 24**

Cavity Batten Note:

Refer to cavity batten layout for batten sizes, types, spacings & fixings.



Head



Jamb/Sill

Note:
Jamb detail similar to sill with angle to give support to BGC Duragrid™

PROFILE **BGC Duragrid™**

DATE **Nov 2011**

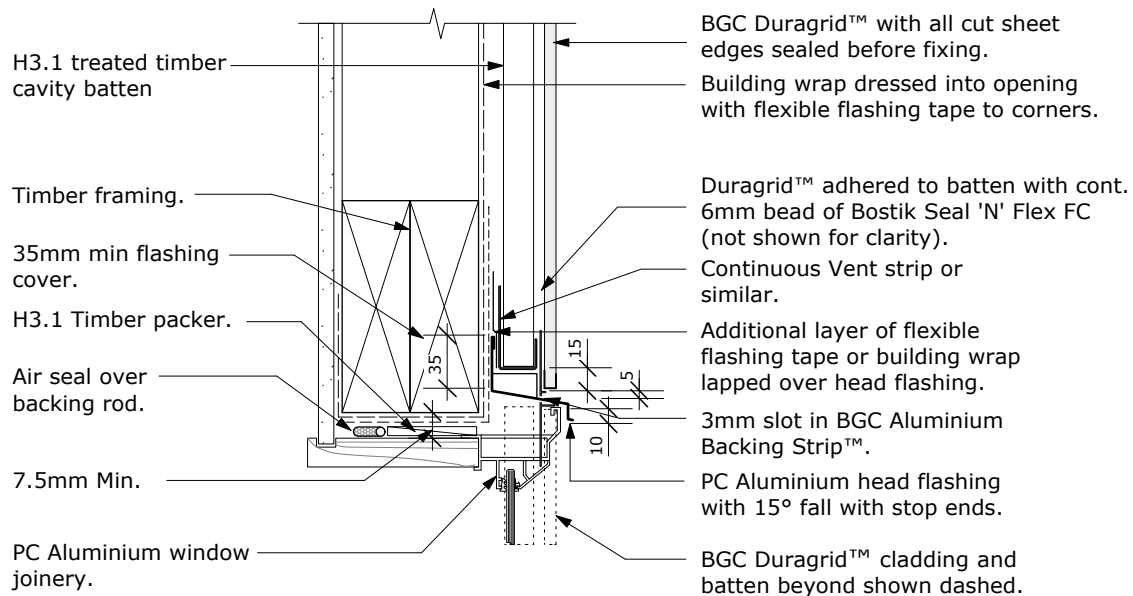
DETAIL **Head/Jamb/Sill Meter Box Details**

SCALE **1:5 @ A4**

DETAIL NO. **D 25**

Cavity Batten Note:

Refer to cavity batten layout for batten sizes, types, spacings & fixings.



Note. Where DurabARRIER™ is used flashing tape must be applied to the entire opening

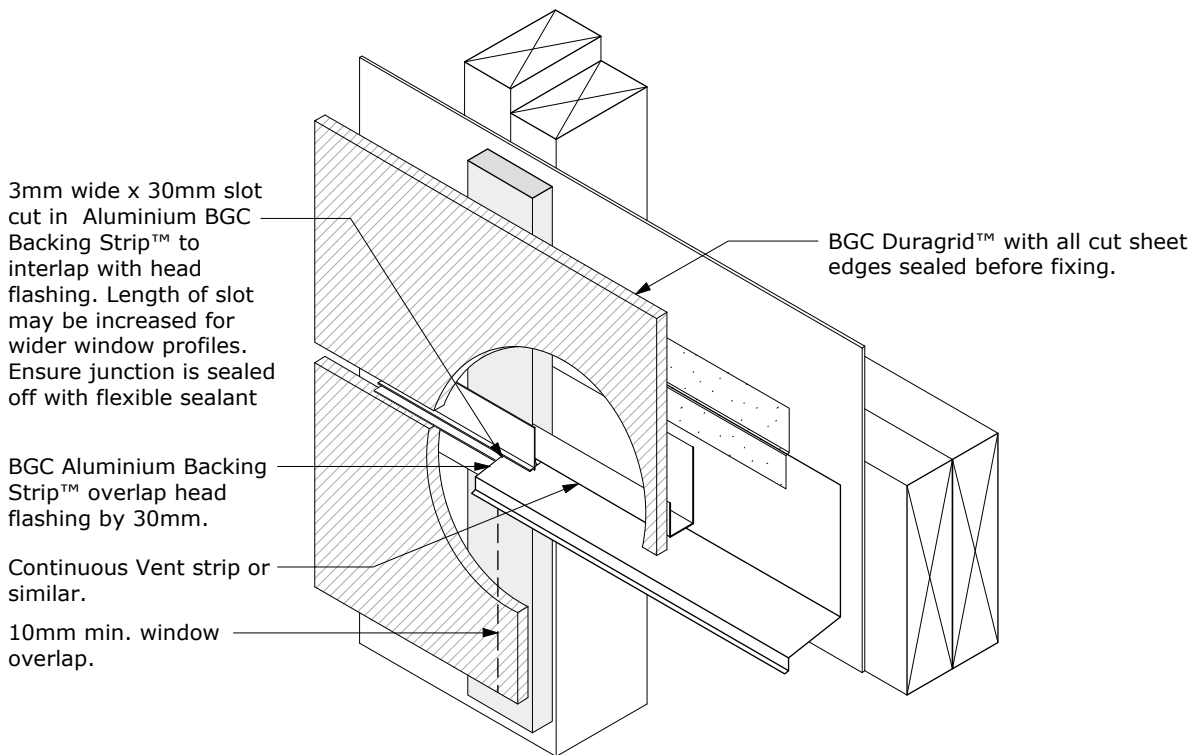
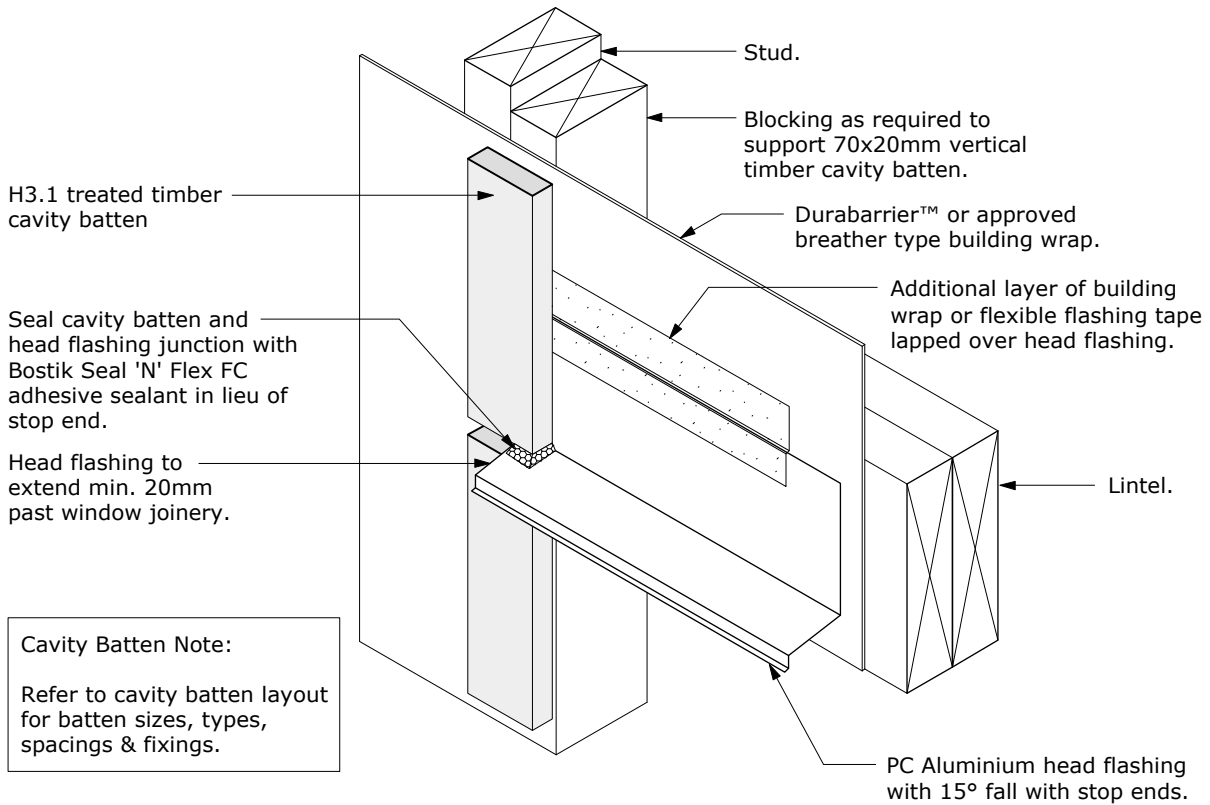
PROFILE **BGC Duragrid™**

DATE Nov 2011

DETAIL **Socket Joint Detail at Window Head**

SCALE 1:5 @ A4

DETAIL NO. **D 26**

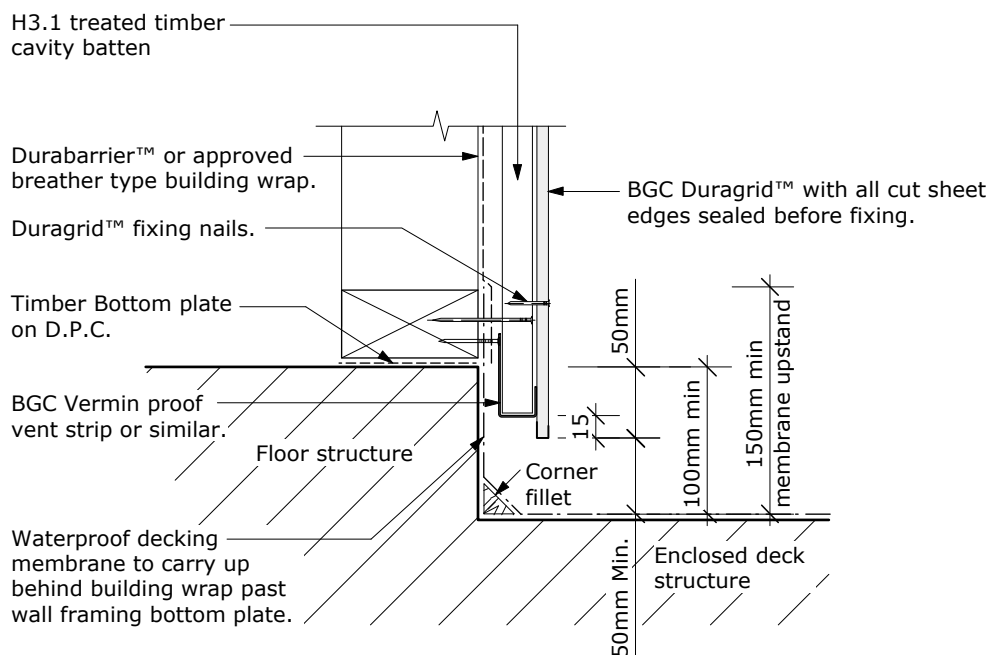


PROFILE **BGC Duragrid™**
 DETAIL **Backing Strip at Window Head**

DATE Nov 2011
 SCALE Nts @ A4
 DETAIL NO. **D 27**

Cavity Batten Note:

Refer to cavity batten layout for batten sizes, types, spacings & fixings.



PROFILE **BGC Duragrid™**
DETAIL **Enclosed Deck Detail**

DATE **Nov 2011**
SCALE **1:5 @ A4**
DETAIL NO. **D 28**