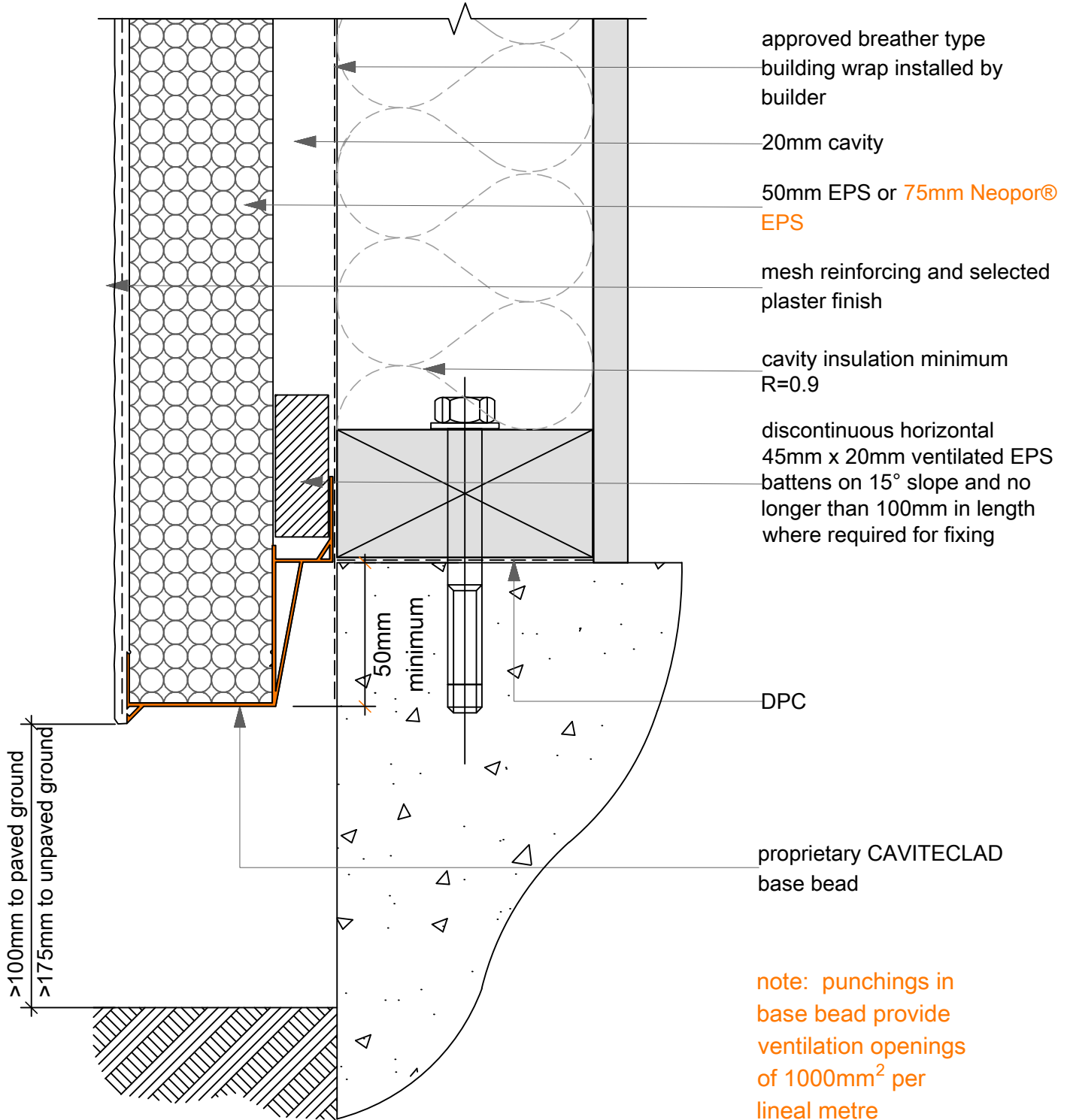


BRANZ Appraised
Appraisal No.510 [2013]



approved breather type building wrap installed by builder

20mm cavity

50mm EPS or 75mm Neopor® EPS

mesh reinforcing and selected plaster finish

cavity insulation minimum R=0.9

discontinuous horizontal 45mm x 20mm ventilated EPS battens on 15° slope and no longer than 100mm in length where required for fixing

>100mm to paved ground
>175mm to unpaved ground

50mm minimum

DPC

proprietary CAVITECLAD base bead

note: punchings in base bead provide ventilation openings of 1000mm² per lineal metre

06D
SCALE: 1:2

Wall / Floor: CONCRETE SLAB (High Back U-Channel)
CAVITECLAD