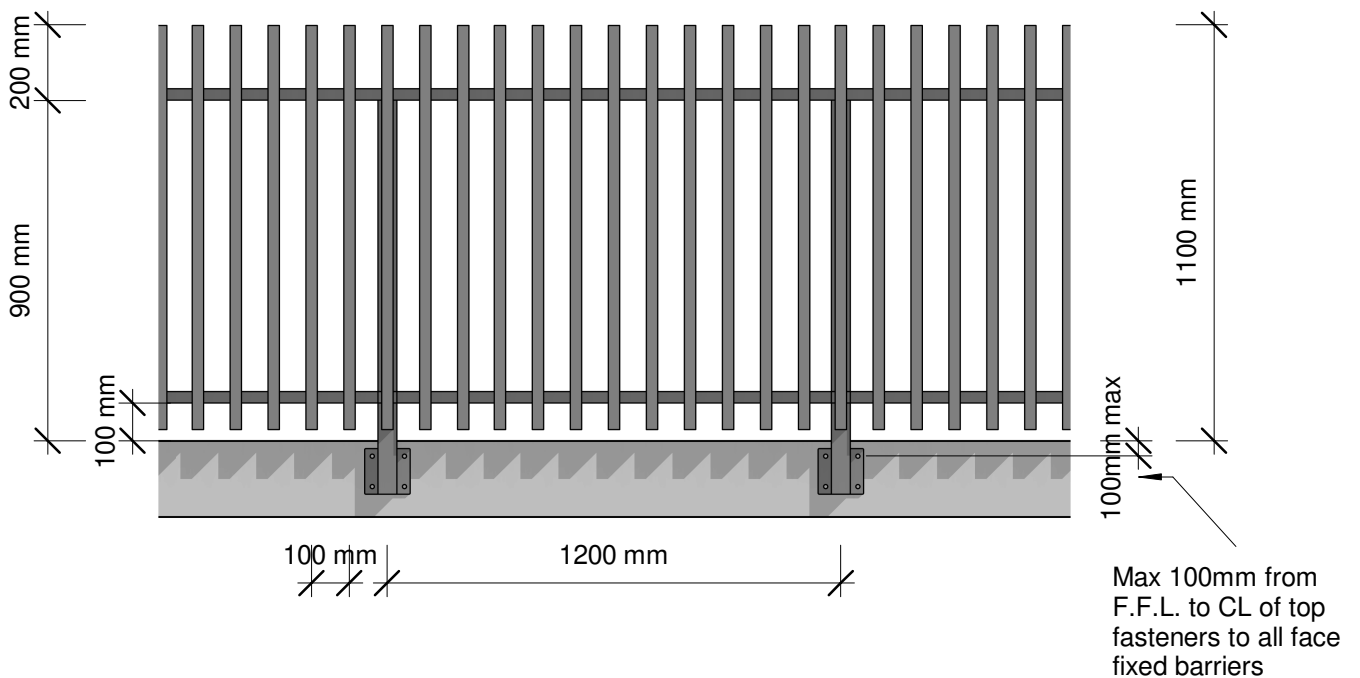


Plan



Elevation

Plot Date: 22 May 2019 13:31

© 2019. The copyright of this document is the property of Glass Vice Limited and shall not be reproduced, copied, loaned or disposed of directly, or indirectly, nor used for any purpose other than that for which it is specifically furnished without prior consent.

All dimensions in millimetres

GLASS  
VICE

# Vertical Battens

## 1100mm High Face Fixed

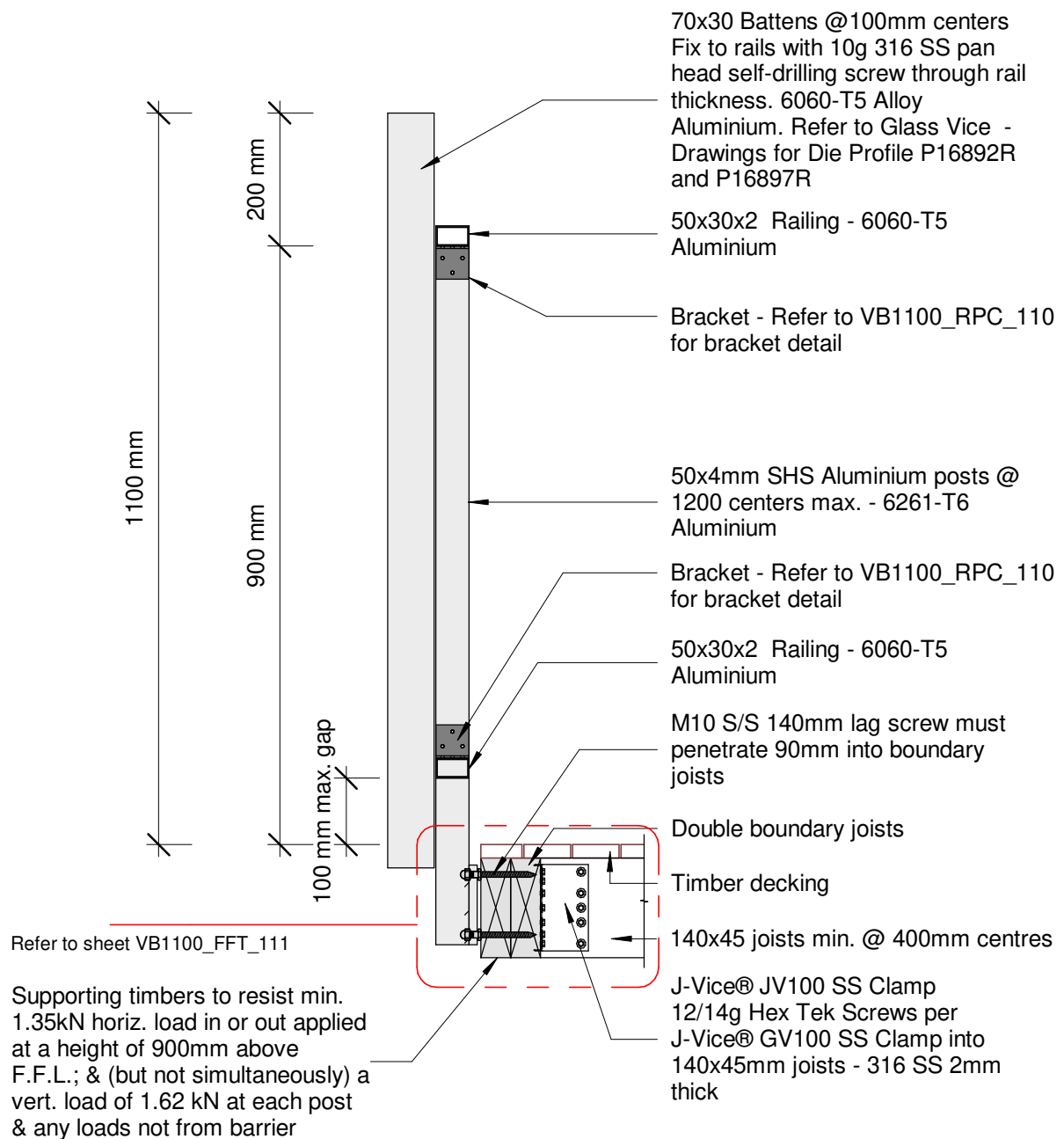
Elevation - Face Fix 1.1M Residential Barrier

Date: 10 April 2019  
Scale: 1 : 20

Issue 01

www.glassvice.com  
Phone +64 9 414 6565  
info@glassvice.com

VB1100\_110



Plot Date: 22 May 2019 13:31

© 2019. The copyright of this document is the property of Glass Vice Limited and shall not be reproduced, copied, loaned or disposed of directly, or indirectly, nor used for any purpose other than that for which it is specifically furnished without prior consent.

All dimensions in millimetres



## Vertical Battens

1100mm High Face Fixed into Timber

Section - Face Fix Double Joist 140 1.1M Residential Barrier

Date: 10 April 2019

Scale: 1 : 10

Issue 01

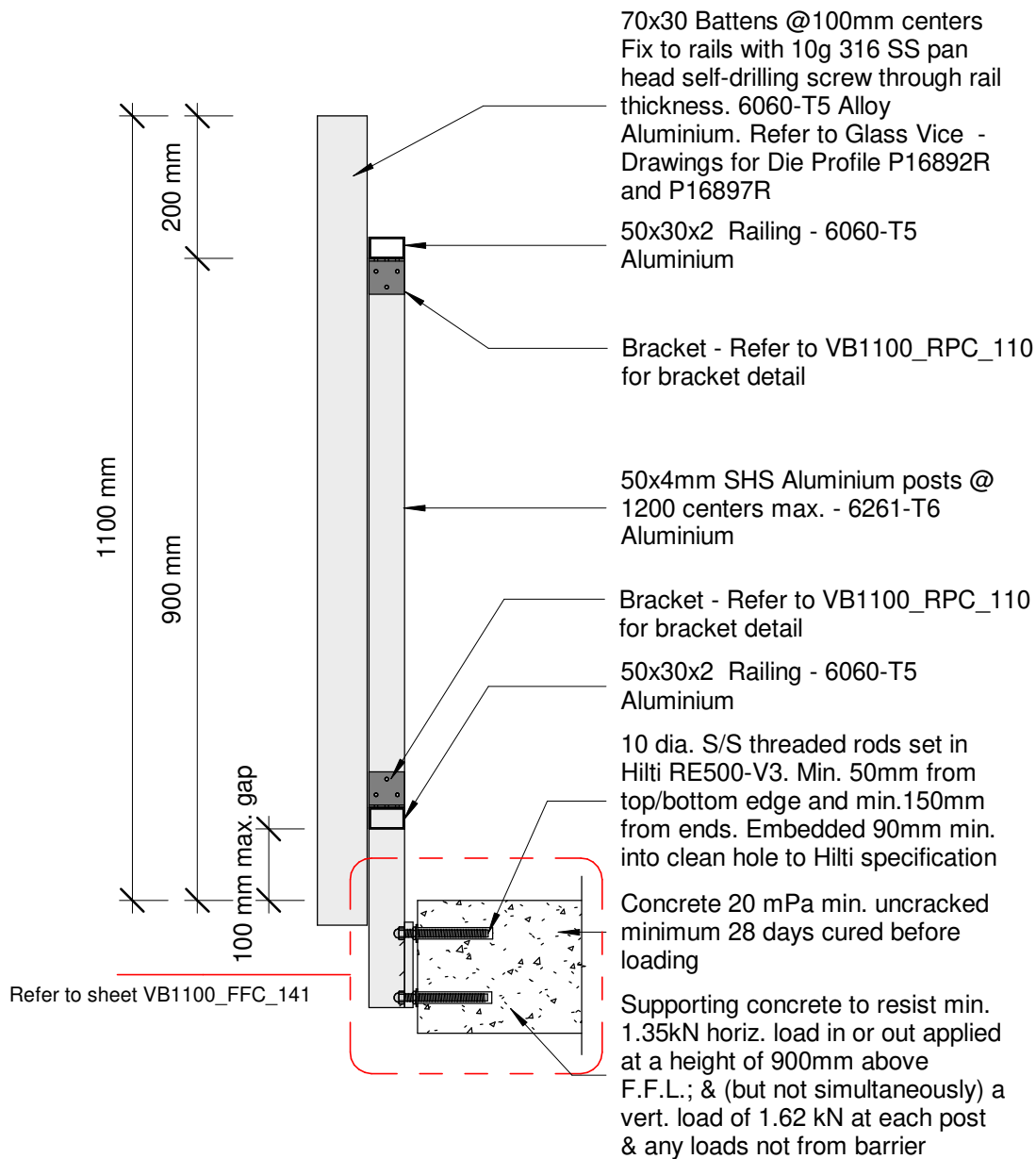
www.glassvice.com

Phone +64 9 414 6565

info@glassvice.com

VB1100\_120





Plot Date: 22 May 2019 13:31

© 2019. The copyright of this document is the property of Glass Vice Limited and shall not be reproduced, copied, loaned or disposed of directly, or indirectly, nor used for any purpose other than that for which it is specifically furnished without prior consent.

All dimensions in millimetres



# Vertical Battens

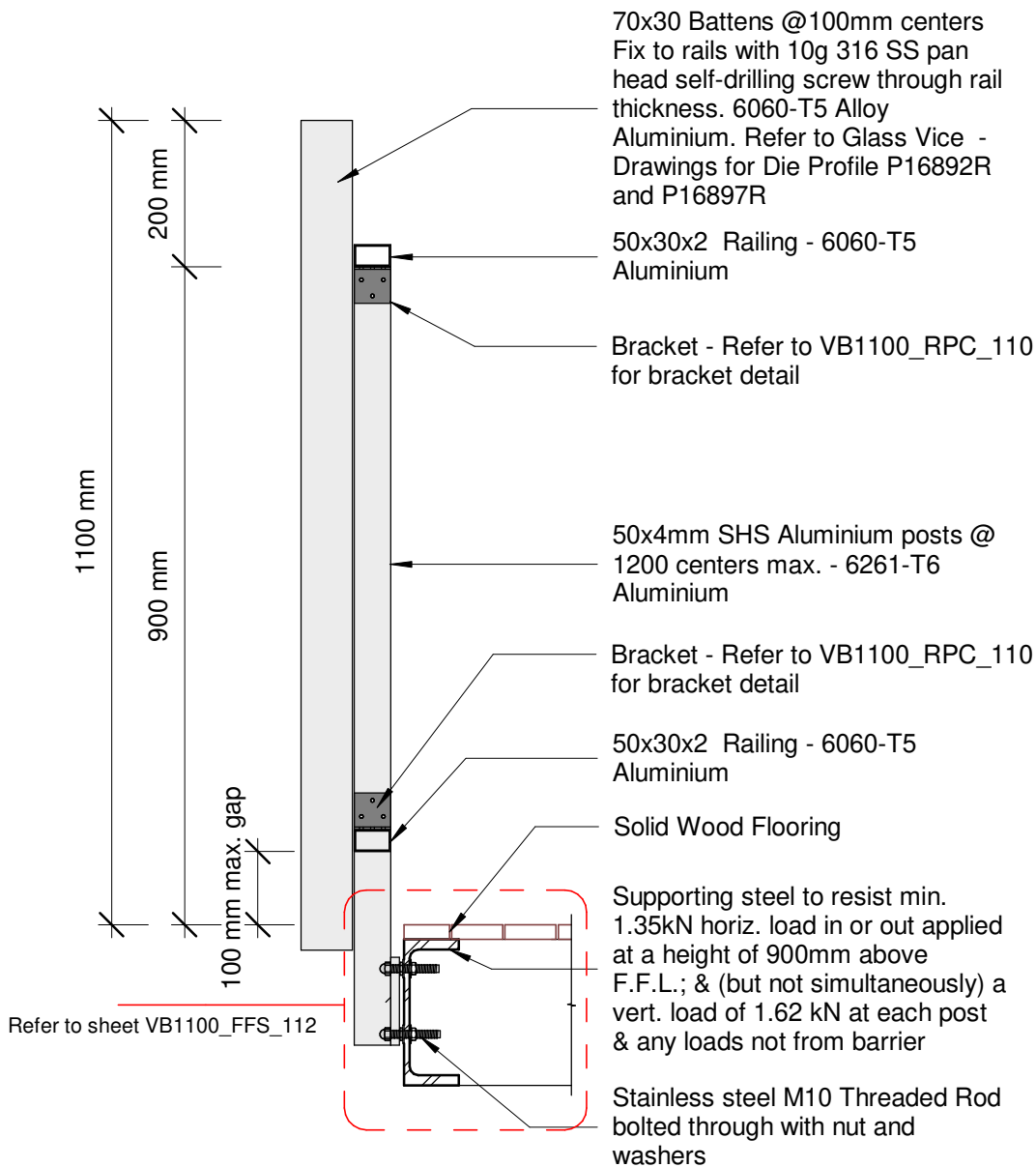
## 1100mm High Face Fixed into Concrete

### Section - Face Fix Concrete 1.1M Residential Barrier

Date: 10 April 2019  
Scale: 1 : 10  
Issue 01

www.glassvice.com  
Phone +64 9 414 6565  
info@glassvice.com

VB1100\_140



Plot Date: 22 May 2019 13:31

© 2019. The copyright of this document is the property of Glass Vice Limited and shall not be reproduced, copied, loaned or disposed of directly, or indirectly, nor used for any purpose other than that for which it is specifically furnished without prior consent.

All dimensions in millimetres



## Vertical Battens

1100mm Face Fixed into Steel Beam

Section - Face Fix Steel Beam 1.1M Residential Barrier

Date: 10 April 2019

Scale: 1 : 10

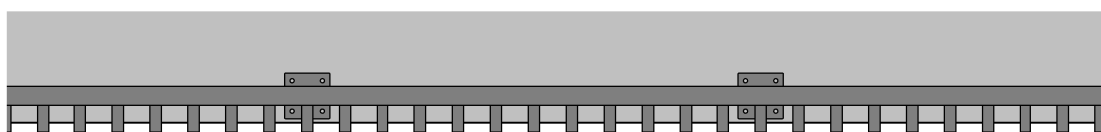
Issue 01

www.glassvice.com

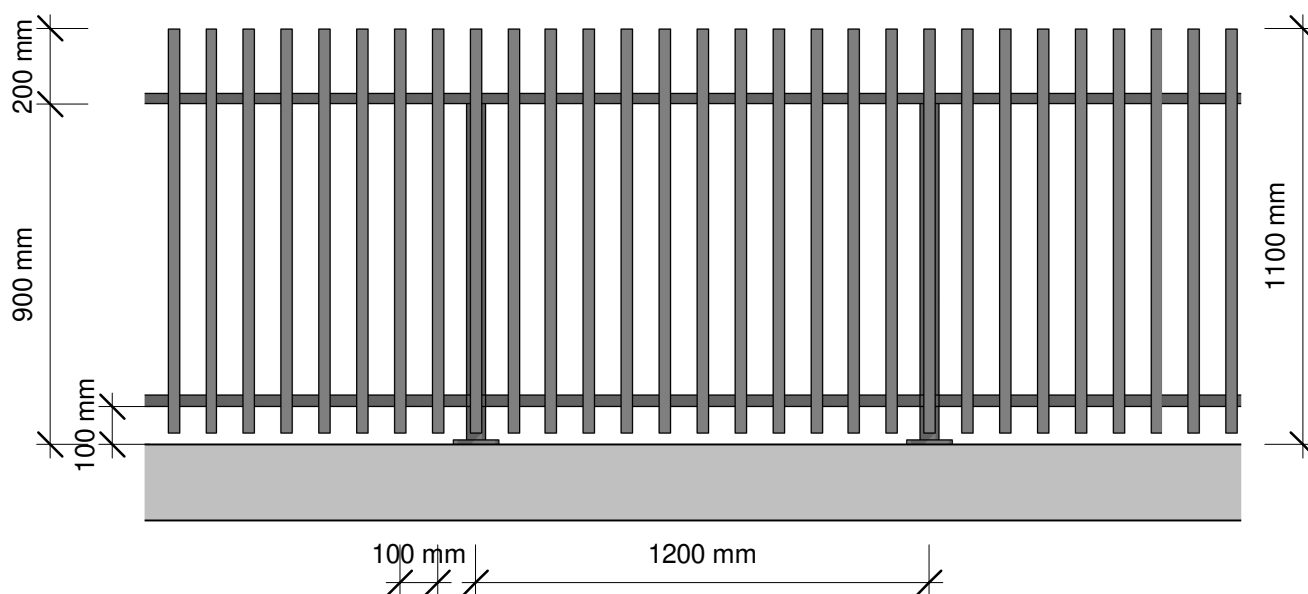
Phone +64 9 414 6565

info@glassvice.com

VB1100\_150



Plan



Elevation

Plot Date: 22 May 2019 13:31

© 2019. The copyright of this document is the property of Glass Vice Limited and shall not be reproduced, copied, loaned or disposed of directly, or indirectly, nor used for any purpose other than that for which it is specifically furnished without prior consent.

All dimensions in millimetres



# Vertical Battens

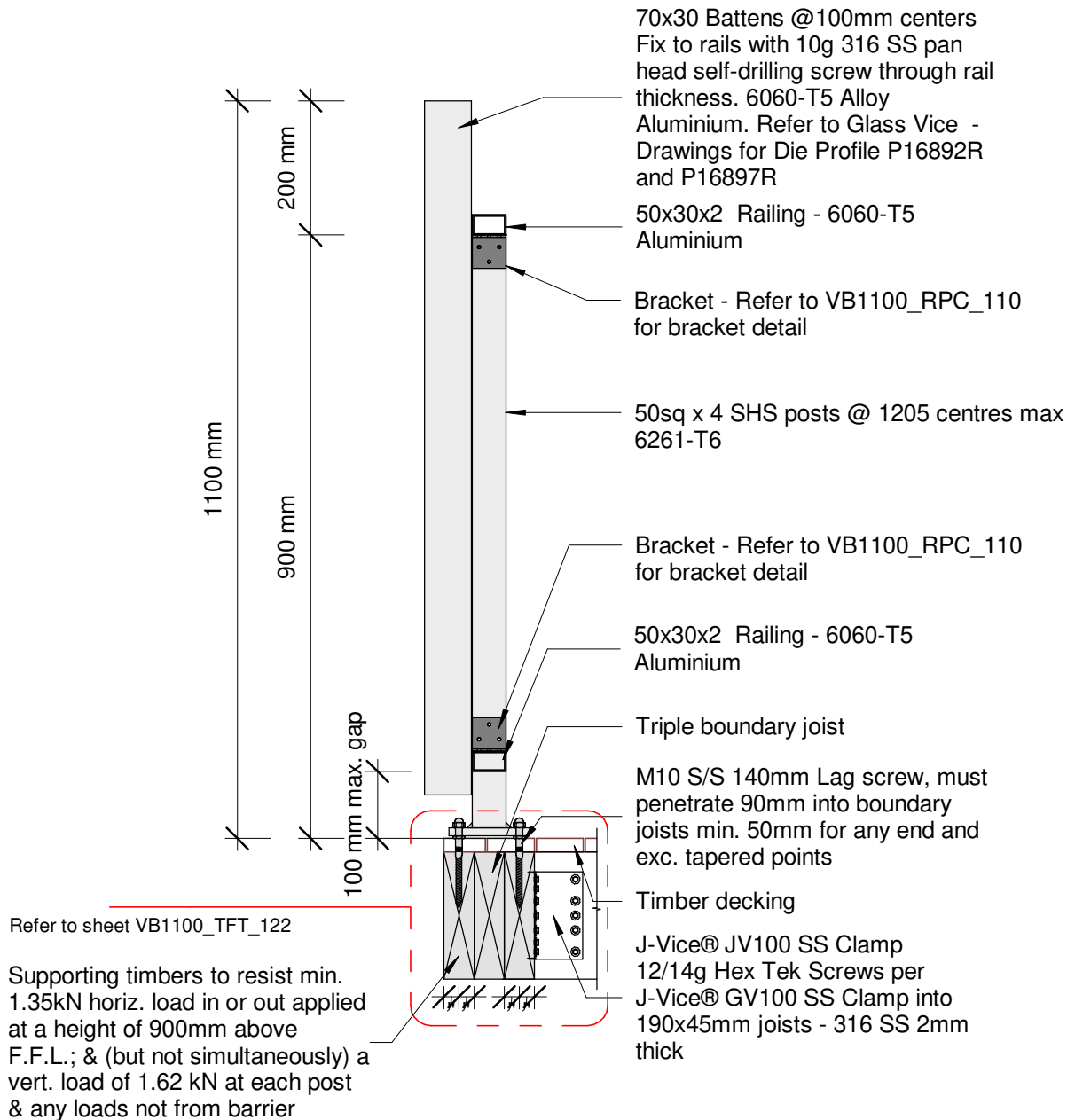
## 1100mm High Top Fixed

Elevation - Top Fix 1.1M Residential Barrier

Date: 10 April 2019  
Scale: 1 : 20  
Issue 01

www.glassvice.com  
Phone +64 9 414 6565  
info@glassvice.com

VB1100\_240



Plot Date: 22 May 2019 13:31

© 2019. The copyright of this document is the property of Glass Vice Limited and shall not be reproduced, copied, loaned or disposed of directly, or indirectly, nor used for any purpose other than that for which it is specifically furnished without prior consent.

All dimensions in millimetres



# Vertical Battens

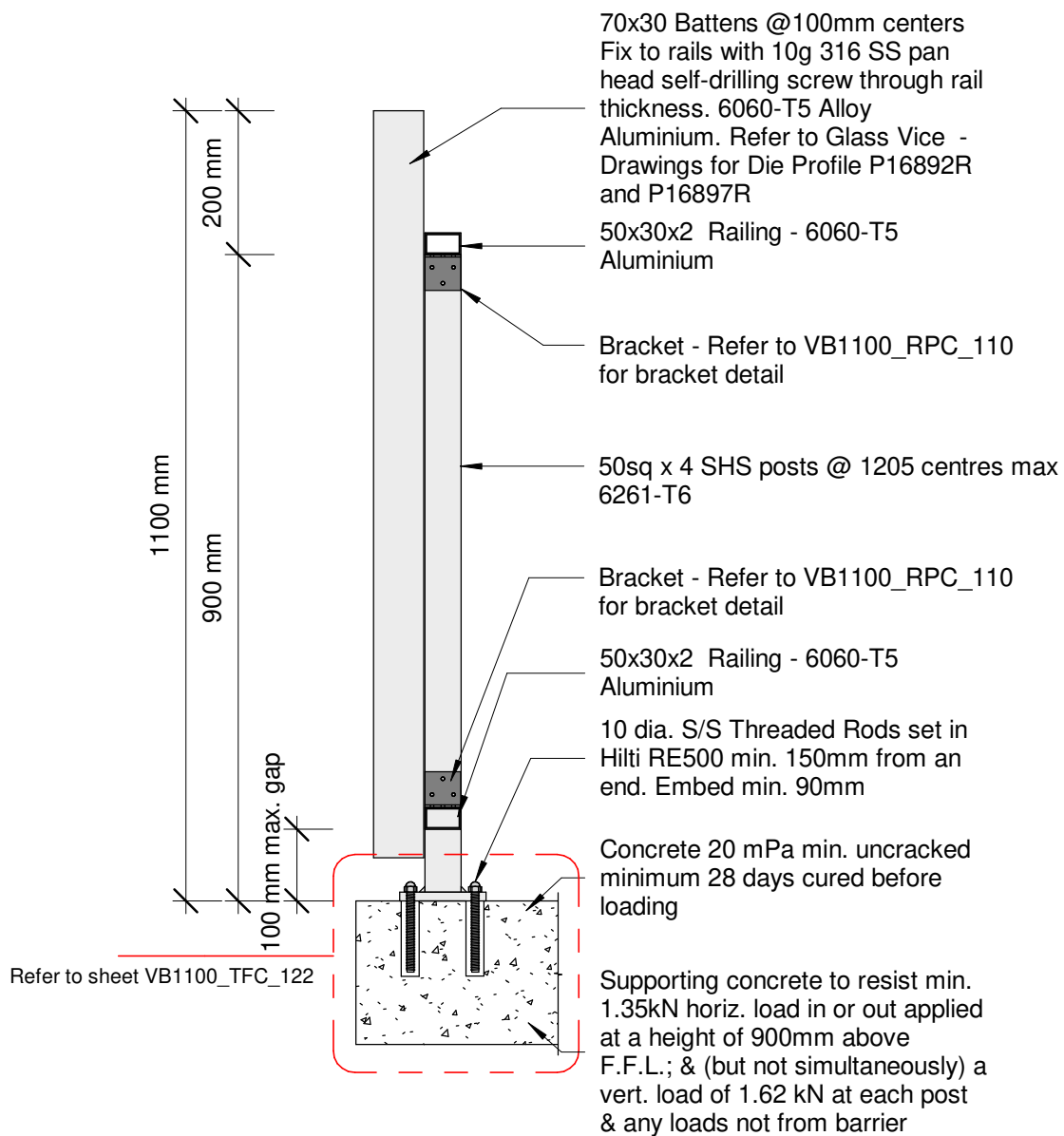
## 1100mm High Top Fixed

Section - Top Fix 190 Triple Joist 1.1M Residential Barrier

Date: 10 April 2019  
Scale: 1 : 10  
Issue 01

www.glassvice.com  
Phone +64 9 414 6565  
info@glassvice.com

VB1100\_250



Plot Date: 22 May 2019 13:31

© 2019. The copyright of this document is the property of Glass Vice Limited and shall not be reproduced, copied, loaned or disposed of directly, or indirectly, nor used for any purpose other than that for which it is specifically furnished without prior consent.

All dimensions in millimetres



# Vertical Battens

## 1100mm High Top Fixed into Concrete

### Section - Top Fix Concrete 1.1M Residential Barrier

Date: 10 April 2019  
Scale: 1 : 10  
Issue 01

www.glassvice.com  
Phone +64 9 414 6565  
info@glassvice.com

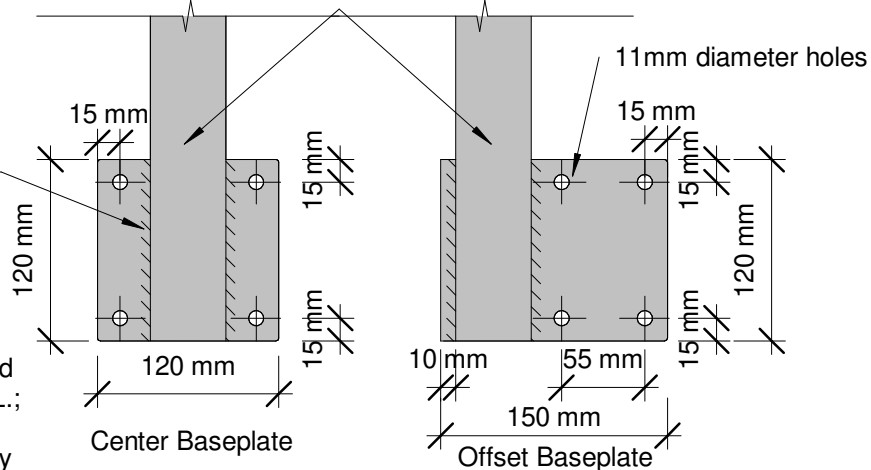
VB1100\_260

12mm Baseplate - 5083-H321,  
H116 Alloy Aluminium 120mm long  
6mm fillet weld (leg size, equal)  
each side of post with 5356 alloy

**Note**

Supporting concrete to resist min.  
1.35kN horiz. load in or out applied  
at a height of 900mm above F.F.L.;  
& (but not simultaneously) a vert.  
load of 1.62 kN at each post & any  
loads not from barrier

50x4mm SHS Aluminium Post



50x4mm SHS Aluminium posts @  
1200 centers max. - 6261-T6  
Aluminium

Dome nut SS M10

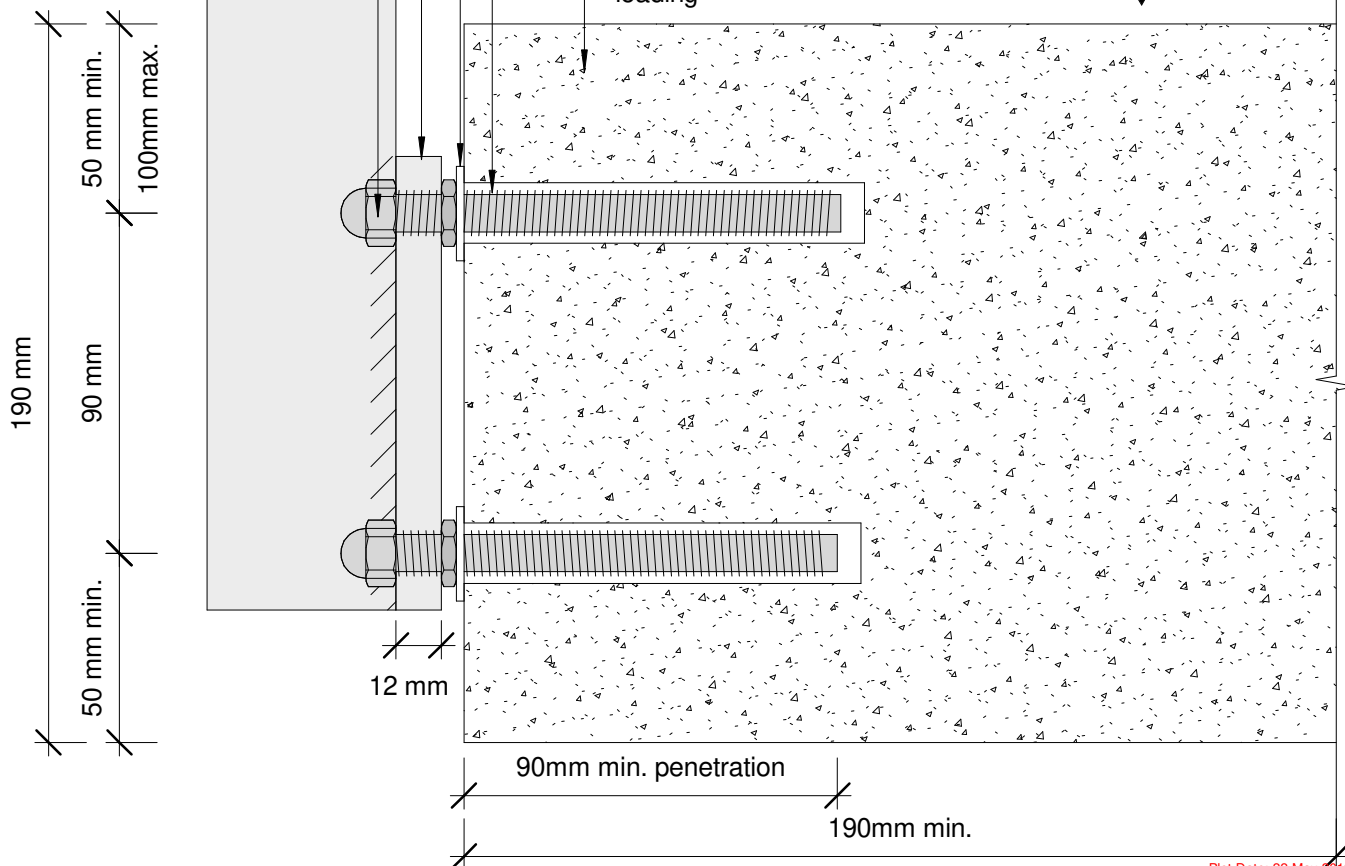
12mm Baseplate - 5083-H321,  
H116 Alloy Aluminium 120mm long  
6mm fillet weld (leg size, equal)  
each side of post with 5356 alloy

M10x25 stainless washer 1.5 thick

10 dia. S/S threaded rods set in  
Hilti RE500-V3. Min. 50mm from  
top/bottom edge and min. 150mm  
from ends. Embedded 90mm min.  
into clean hole to Hilti specification

Concrete 20 mPa min. uncracked  
minimum 28 days cured before  
loading

F.F.L.



Plot Date: 22 May 2019 13:31

© 2019. The copyright of this document is the property of Glass Vice Limited and shall not be reproduced, copied, loaned or disposed of directly, or indirectly, nor used for any purpose other than that for which it is specifically furnished without prior consent.

All dimensions in millimetres

**GLASS  
VICE**

# Vertical Battens

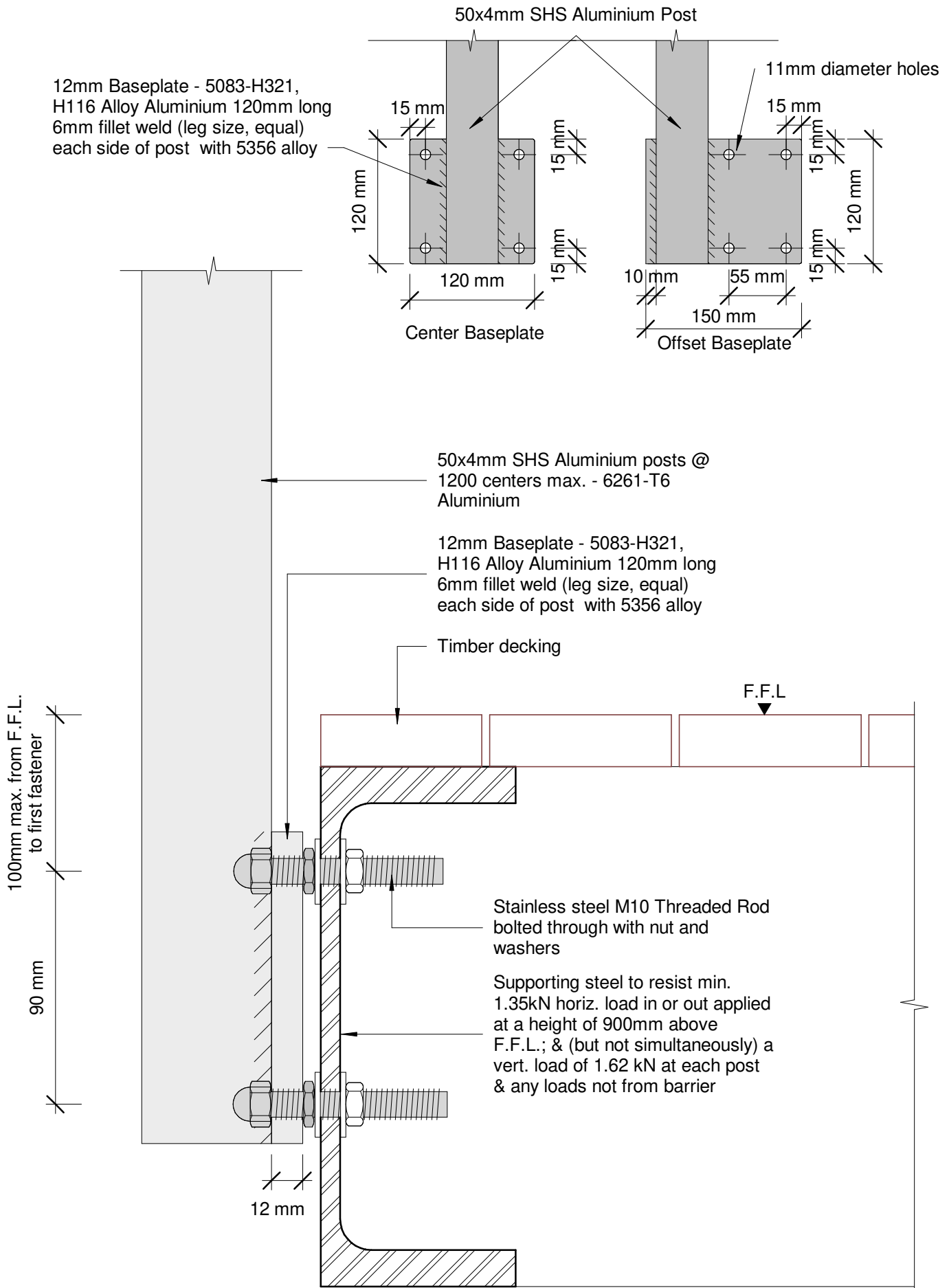
## 1100mm High Face Fixed into Concrete

Detail - Face Fix Concrete 1.1M Residential Barrier

Date: 10 April 2019  
Scale: As indicated  
Issue 01

www.glassvice.com  
Phone +64 9 414 6565  
info@glassvice.com

VB1100\_FFC\_141



Plot Date: 22 May 2019 13:31

© 2019. The copyright of this document is the property of Glass Vice Limited and shall not be reproduced, copied, loaned or disposed of directly, or indirectly, nor used for any purpose other than that for which it is specifically furnished without prior consent.

All dimensions in millimetres

**GLASS  
VICE**

# Vertical Battens

## 1100mm High Face Fixed into Steel Beam

Detail - Face Fix Steel Beam 1.1M Residential Barrier

Date: 10 April 2019

Scale: As indicated

Issue 01

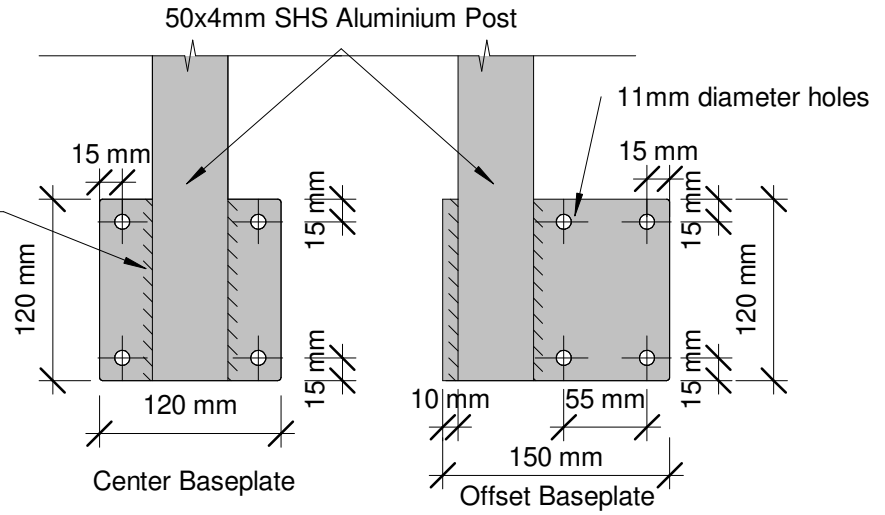
www.glassvice.com

Phone +64 9 414 6565

info@glassvice.com

**VB1100\_FFS\_112**

12mm Baseplate - 5083-H321,  
H116 Alloy Aluminium 120mm long  
6mm fillet weld (leg size, equal)  
each side of post with 5356 alloy



50x4mm SHS Aluminium posts @  
1200 centers max. - 6261-T6  
Aluminium

Dome nut SS M10

12mm Baseplate - 5083-H321,  
H116 Alloy Aluminium 120mm long  
6mm fillet weld (leg size, equal)  
each side of post with 5356 alloy

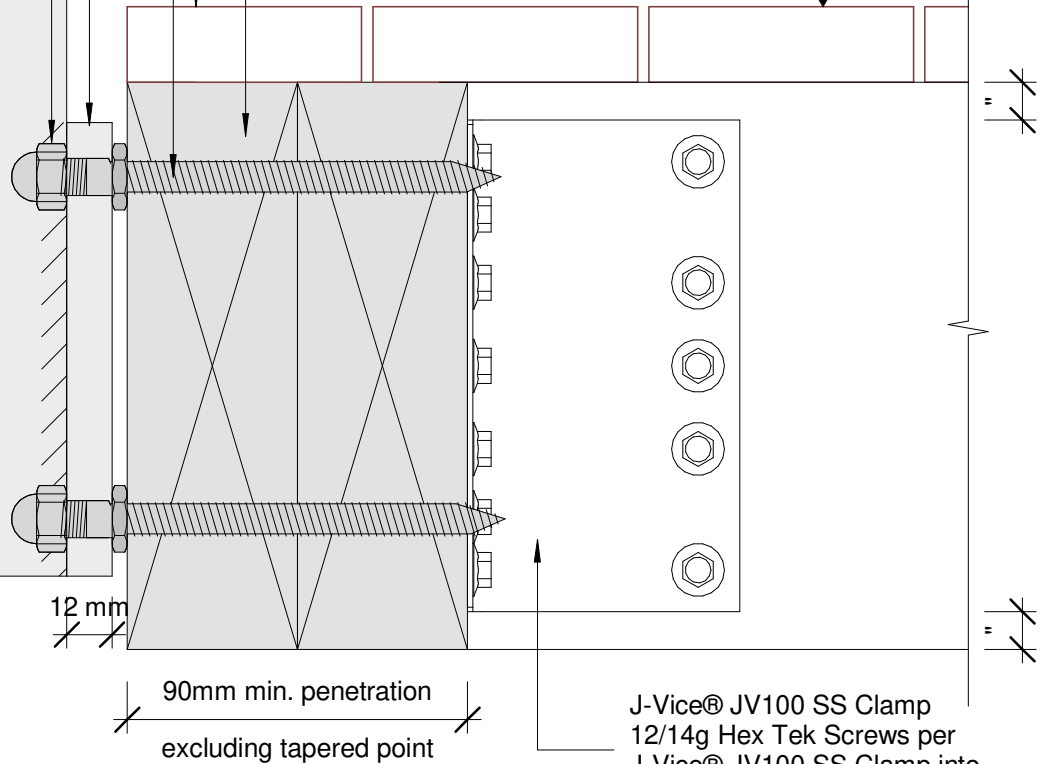
M10 S/S 140mm lag screw must  
penetrate 90mm into boundary  
joists. 50mm from any timber  
member end and excluding  
tapered point

Timber decking

Double boundary joist 140x45mm

F.F.L.

100mm max from F.F.L.  
to first fastener  
25mm min.  
90 mm  
25mm min.



J-Vice® JV100 SS Clamp  
12/14g Hex Tek Screws per  
J-Vice® JV100 SS Clamp into  
triple joists - 316 SS 2mm thick

Plot Date: 22 May 2019 13:31

© 2019. The copyright of this document is the property of Glass Vice Limited and shall not be reproduced, copied, loaned or disposed of directly, or indirectly, nor used for any purpose other than that for which it is specifically furnished without prior consent.

All dimensions in millimetres



## Vertical Battens

1100mm High Face Fixed into Timber

Detail - Face Fix 140 Double Joist 1.1M Residential Barrier

Date: 10 April 2019

Scale: As indicated

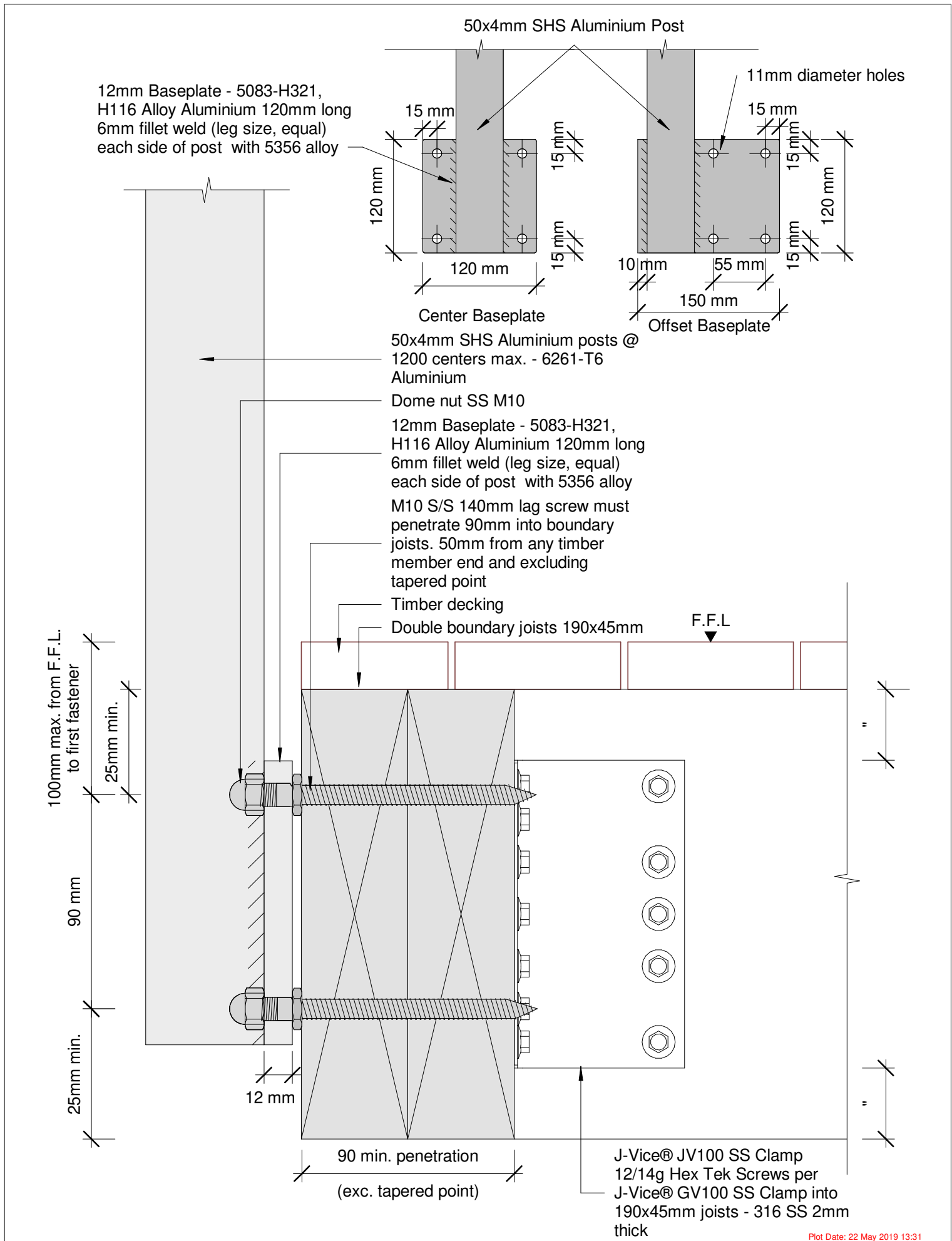
Issue 01

www.glassvice.com

Phone +64 9 414 6565

info@glassvice.com

VB1100\_FFT\_111



Plot Date: 22 May 2019 13:31

© 2019. The copyright of this document is the property of Glass Vice Limited and shall not be reproduced, copied, loaned or disposed of directly, or indirectly, nor used for any purpose other than that for which it is specifically furnished without prior consent.

All dimensions in millimetres



# Vertical Battens

1100mm High Face Fixed into Timber

Detail - Face Fix 190 Double Joist 1.1M Residential Barrier

Date: 10 April 2019

Scale: As indicated

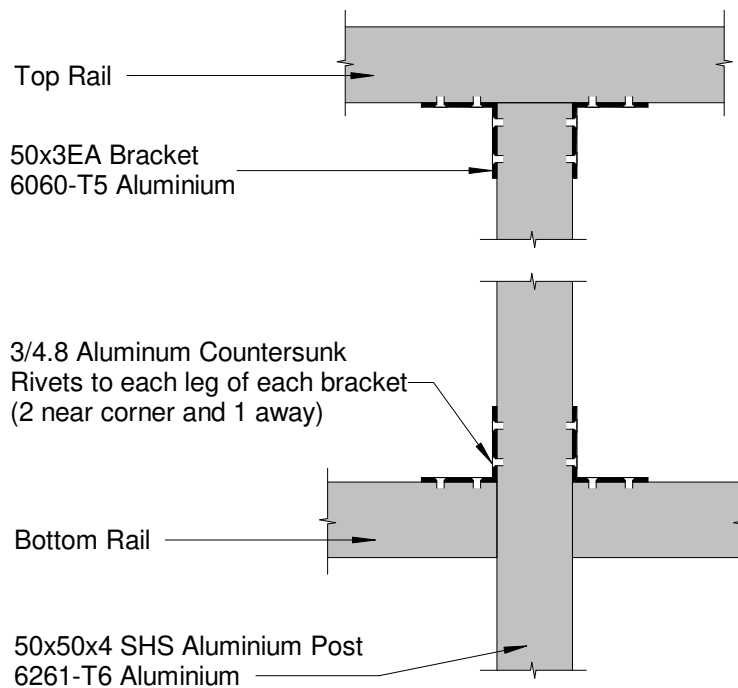
Issue 01

www.glassvice.com

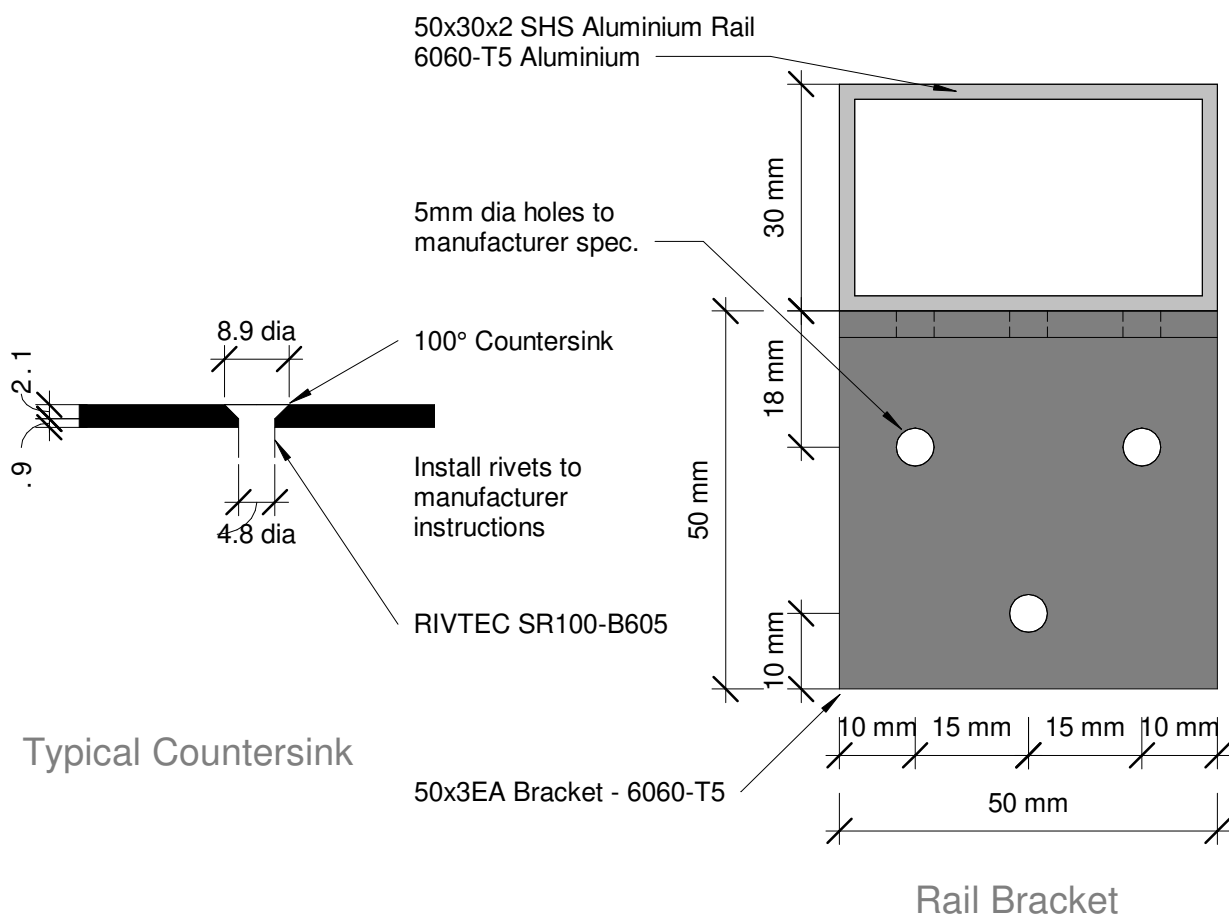
Phone +64 9 414 6565

info@glassvice.com

VB1100\_FFT\_121



## Rail - Post Connection



Plot Date: 22 May 2019 13:31

© 2019. The copyright of this document is the property of Glass Vice Limited and shall not be reproduced, copied, loaned or disposed of directly, or indirectly, nor used for any purpose other than that for which it is specifically furnished without prior consent.

All dimensions in millimetres



**Vertical Battens**  
Top/Side Fix 1100mm  
Detail - Rail - Post Connection

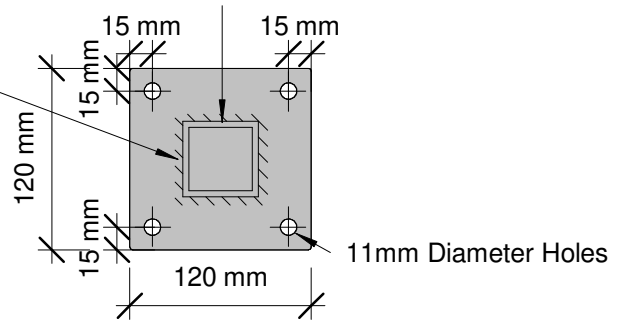
Date: 10 April 2019  
Scale: As indicated  
Issue 01

www.glassvice.com  
Phone +64 9 414 6565  
info@glassvice.com

VB1100\_RPC\_110

12mm Plate - 5083, H321, H116  
Alloy Aluminium. 8mm F.W.A.R.  
5356 Filler Alloy weld

50x50x4mm SHS Aluminium Post



**Note**  
Supporting concrete to resist min.  
1.35kN horiz. load in or out applied  
at a height of 900mm above F.F.L.;  
& (but not simultaneously) a vert.  
load of 1.62 kN at each post & any  
loads not from barrier

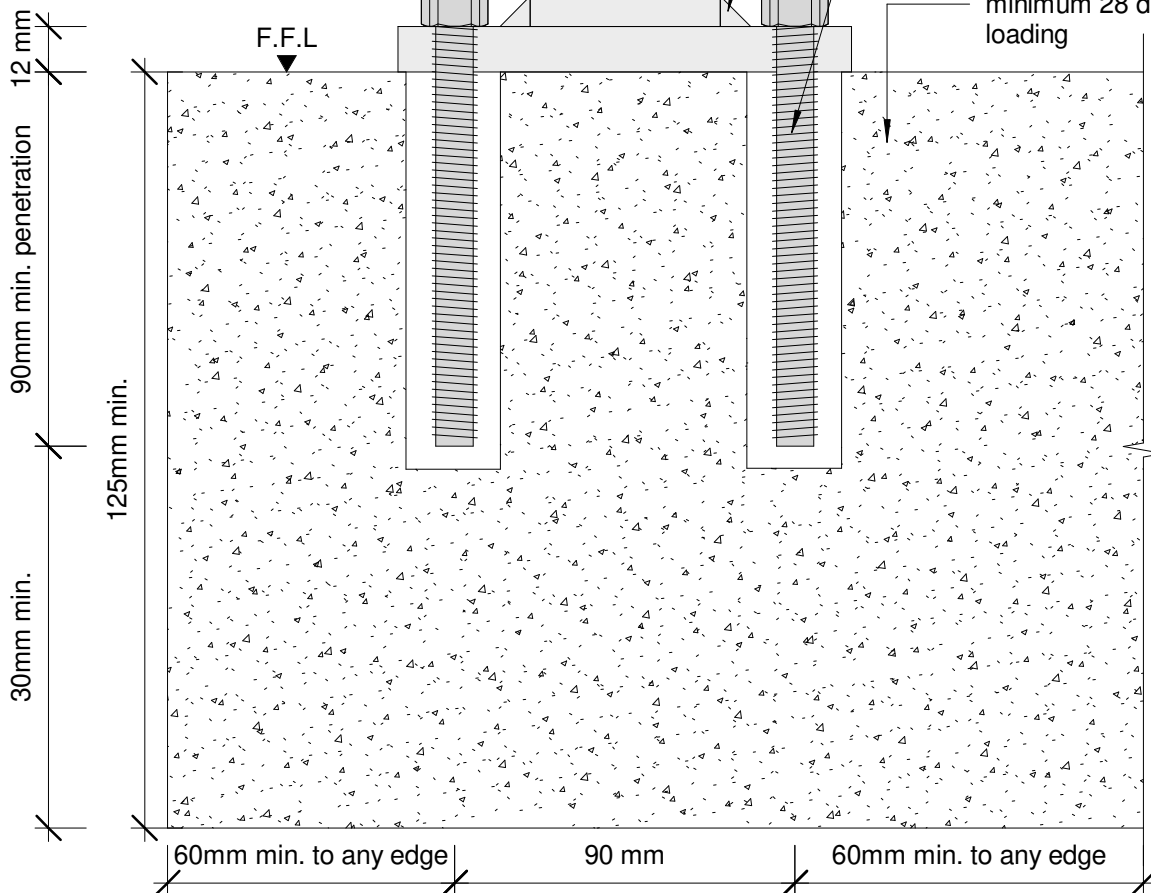
50sq x 4mm SHS Aluminium posts  
@ 1200 centers max. - 6261-T6

12mm Plate - 5083, H321, H116  
Alloy Aluminium. 8mm F.W.A.R.  
5356 Filler Alloy weld

Dome nut

10 dia. S/S Threaded Rods set in  
Hilti RE500 min. 150mm from an  
end. Embed min. 90mm

Concrete 20 mPa min. uncracked  
minimum 28 days cured before  
loading



Plot Date: 22 May 2019 13:31

© 2019. The copyright of this document is the property of Glass Vice Limited and shall not be reproduced, copied, loaned or disposed of directly, or indirectly, nor used for any purpose other than that for which it is specifically furnished without prior consent.

All dimensions in millimetres

**GLASS  
VICE**

# Vertical Battens

## 1100mm High Top Fixed into Concrete

Detail - Top Fix Concrete 1.1M Residential Barrier

Date: 10 April 2019

Scale: As indicated

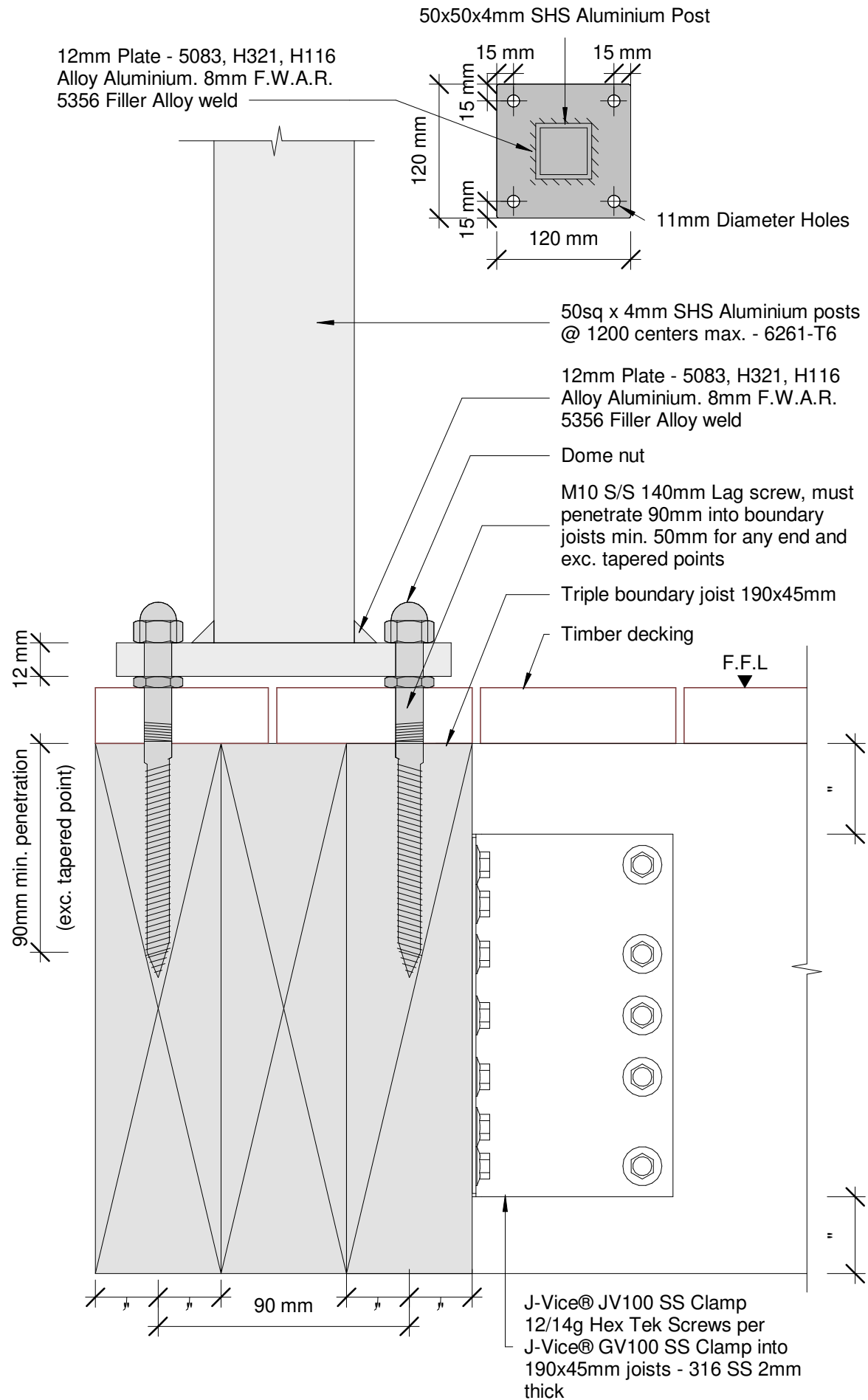
Issue 01

www.glassvice.com

Phone +64 9 414 6565

info@glassvice.com

**VB1100\_TFC\_122**



Plot Date: 22 May 2019 13:31

© 2019. The copyright of this document is the property of Glass Vice Limited and shall not be reproduced, copied, loaned or disposed of directly, or indirectly, nor used for any purpose other than that for which it is specifically furnished without prior consent.

All dimensions in millimetres

GLASS  
VICE®

## Vertical Battens

1100mm High Top Fixed into Timber

Detail - Top Fix 190 Triple Joist 1.1M Residential Barrier

Date: 10 April 2019

Scale: As indicated

Issue 01

www.glassvice.com

Phone +64 9 414 6565

info@glassvice.com

VB1100\_TFT\_122