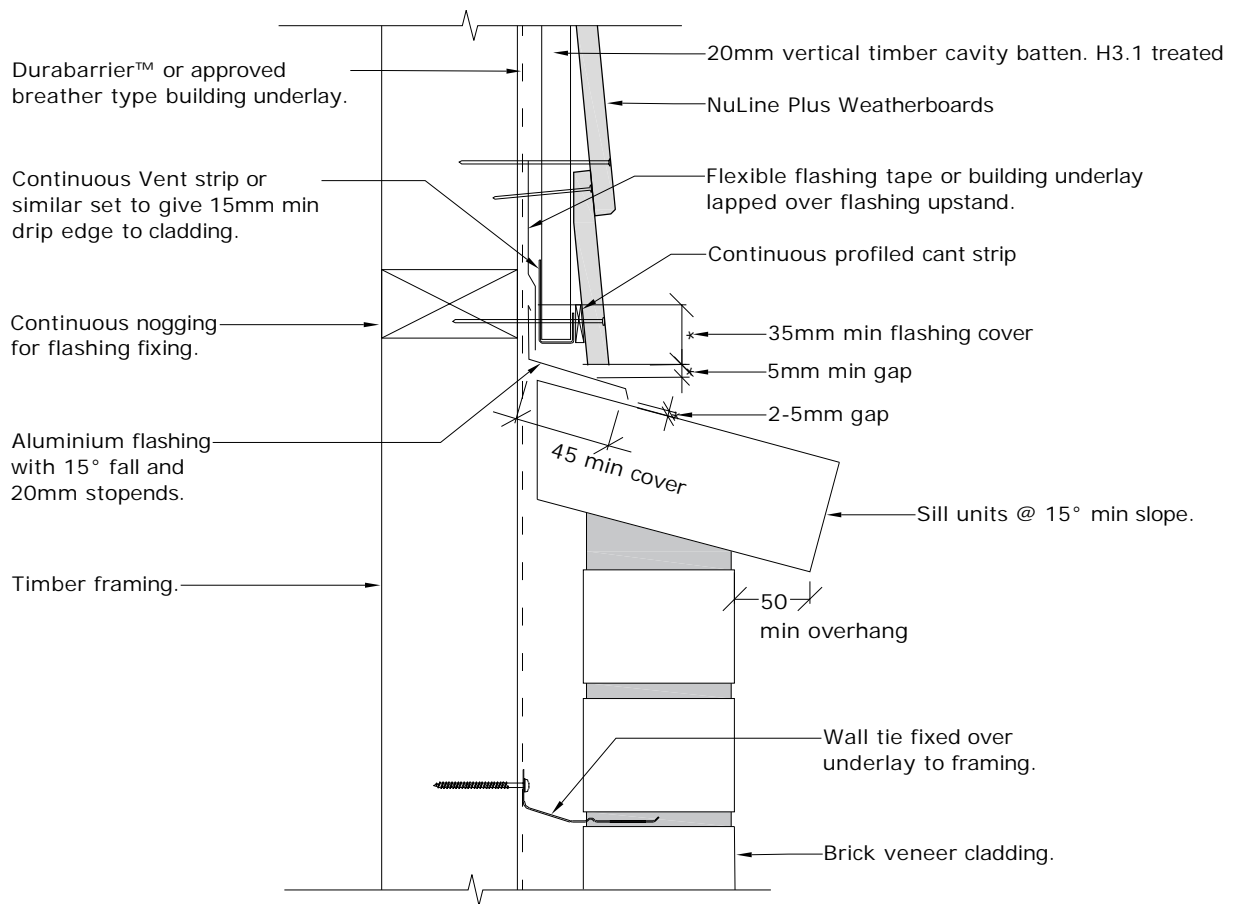


**Cavity Batten Note:**  
Refer to cavity batten layout for batten sizes, types, spacing's & fixings.

**Cladding fixing note:**  
Refer to cladding fixing layout for all fixing types & spacing's



PROFILE **BGC NuLine™ Plus Weatherboards**

DATE **Oct 2019**

DETAIL **Brick veneer - NuLine™ Plus Junction Detail  
Cavity Construction**

SCALE **1:5 @ A4**

DETAIL NO. **NU-31**