

EXTERNAL HORIZONTALLY FIXED WALL CLADDING SYSTEM



CEDARSCREEN

RUSTICATED

RUSTICATED WEATHERBOARDS



Rusticated horizontal boards, sometimes referred to as shiplap, were a derivative of the traditional bevel back board, and with a distinctive scalloped rebate allowing water to fall off.

Reminiscent of rural buildings and originally used in construction of barns, sheds and farm buildings, this profile is renowned for its strength and robustness. Modern machining methods have enabled manufacturers to modify profiles further to create a variety of lap detailing and offer a range of options to suit the needs of designers and end users whatever the context.

No longer simply the preferred choice for rural or agricultural locations, rusticated weatherboarding has come of age and can be seen throughout the country, commonly featured in top end housing and award winning architecture.

GENERAL

Cedarscreen Rusticated Weatherboards is an external horizontally fixed wall cladding system. This system is used for residential and light commercial building types.

The Cedarscreen Rusticated system comprises of direct fixed and cavity fixed options (factory finished to all sides with a migrating wood oil).

Cedarscreen installation guides are intended to link the end user to best practise and correct installation of the specified system. In the literature we primarily reference Western Red Cedar as the timber cladding material.

Rosenfeld Kidson also offer Larch and Truwood as alternative timber cladding species. These timbers are appraised to comply with B2.3.1 (b).

Where there are key differences in these alternative cladding types, we reference Larch and Truwood separately. This generally relates to the species type scope of use, profiles, finishes, fixing and related details.

These species shall be used in accordance with Rosenfeld Kidson's recommended profiles, fixing, finishing and detailing; in addition to the requirements set out in E2/AS1, B2 and F2.

SCOPE

- Cedarscreen Rusticated 20mm cavity system is Codemark certified for mandated compliance CM70081.
- Scope of use conforms to Acceptable Solution E2/AS1 Paragraph 1.1.
- Has a risk score of 0-20 in line with tables 1, 2 and 3 of Acceptable Solution E2/AS1.
- Timber framing to comply with NZS 3604-2011 Timber framed buildings.
- NZS 3604 Wind Zones.
- Aluminium windows and doors joinery to comply with NZS 4211-2008 – Specification for performance windows.
- Materials, products and processes contained within the building scope of NZS 3604-2011.

New Zealand Building Code (NZBC) performance requirements:

- Clause B1 Structural Performance B1.3.1, B1.3.2, B1.3.3 (a), (h), (j) and (q) and B1.3.4.
- Clause B2 Durability: B2.3.1 (b) 15 years and B2.3.2, B2/VM1, 1.1.1(a).
- Clause E2 External Moisture E2.3.2.
- Clause F2 Hazardous Building Material F2.3.1.

SPECIES

WESTERN RED CEDAR

Western Red Cedar (*Thuja plicata*) weatherboards are compliant for above ground use in accordance with New Zealand Standard NZS 3602: 2003 Timber and Wood-based Products, specifically B2.3.1 (b), for use in Building and when fixed above ground exceeds the minimum 15-year durability requirement.

LARCH

Siberian Larch (*Larix sibirica*)

Larch is utilised in horizontal and vertical cladding profiles that are compliant with Branz Bulletin 411. Siberian Larch timber grade supplied by Rosenfeld Kidson & Co Ltd is a mixture of Grades I, II, and III, called Unsorted I-III. The Unsorted I-III grade of Larch is compliant with NZS3631:1988 NZ Timber Grading Rules. Larch is independently appraised to show compliance with B2.3.1 (b).

The Larch supplied by Rosenfeld Kidson has a factory applied oiled finish using Dryden WoodOil. The Larch profile types supplied are available with a band sawn face (BSF).

TRUWOOD®

Thermally modified Ayous

Truwood is utilised in horizontal and vertical cladding profiles that are compliant with Branz Bulletin 411. Truwood is a thermally modified, clear grade, low density hardwood. Truwood is produced using the latest thermal modification technology, which involves applying heat at 160 – 230°C, water vapour and pressure to the timber.

The thermal treatment provides a rich Teak coloured timber with great properties of durability and stability. Truwood is independently appraised to show compliance with B2.3.1 (b).

The Truwood supplied by Rosenfeld Kidson has a factory applied finish using Dryden WoodOil.

MAINTENANCE

Maintenance shall be carried out as necessary to achieve the required durability of materials, components and junctions. The extent of necessary maintenance is dependent on:

- Type of cladding and components used.
- Position of cladding and components on the building.
- Geographical location, (recoating with Dryden WoodOil will be required more frequently on more exposed northern and western faces).
- Coating manufacturer cleaning and recoating schedules.

Regular maintenance is essential to ensure the performance requirements of the NZBC are met and to maximise serviceability of the system.

Annual inspection of the cladding material must be made to ensure that all aspects of the cladding system, including flashings and joints remain weatherproof. Any damaged areas or areas showing signs of deterioration, which could allow water ingress must be repaired immediately.

Regular cleaning (at least annually) of the Dryden WoodOil coating is required to remove dirt or grime or surface mould. Dirt and grime may be removed with the use of a soft brush, warm water and a light detergent cleaner.

Recoating with Dryden WoodOil will be required throughout the life of the cladding system. Check manufacturer's product specific recoating requirements, as these may vary from product to product.

Rosenfeld Kidson recommends the use of Dryden WoodOil depending on the timber species used with all our exterior weatherboard systems. Recoating must be carried out approximately every 2-3 years in accordance with the manufacturer's instruction.

Note: some stains or film forming cedar coatings may require annual maintenance. Refer to individual supplier's maintenance guides for appropriate product specifications. Ensure ends of weatherboards and cut or exposed edges are recoated during any general maintenance.

SUSTAINABILITY

Western Red Cedar is also favoured by conservationists as the forests of British Columbia, from where our cedar is sourced, are well-managed and certified as such. All our producers carry certification under SFI, CSA, FSC or PEFC. Please refer to the following site for more information regarding this: www.wrcea.org/environment-sustainability/intro.htm.

Rosenfeld Kidson Larch and Truwood are sourced with FSC® certification providing independent assurance they are sourced from well-managed forests.



MANUFACTURING

PROFILES

Standard profile range RK67 and RK68.

Architectural range RKA700, RKA701, RKA702, RKA703, RKA704, RKA705, RKA741, RKA742, RKA743, RKA744, RKA745, RKA761, RKA763, RKA764, RKA767 and paint finished profiles RKA702 PP-U and RKA704 PP-U.

The Truwood weatherboard profiles available from Rosenfeld Kidson are as follows: RK67, RK68, RKA700, RKA702 and RKA704.

The Larch weatherboard profiles available from Rosenfeld Kidson are as follows: RKA713 and RKA715.

Profiles are manufactured to meet the requirements of E2/AS1 (Acceptable Solution). This is achieved with compliance to Clauses 9.4.1 and 9.4.1.1 of E2/AS1 and Clause 9.4.1.3 E2/AS1 horizontal rusticated profiles and are as given in NZS 3617 or Branz Bulletin 411.

ACCESSORIES

Fascia:

Western Red Cedar fascia.

RK69 135x18.5mm, supplied in lengths 3.9m and longer.

RK70 180x18.5mm, supplied in lengths 3.9m and longer.

RK71 135x28mm, supplied in lengths 3.9m and longer.

RK72 180x28mm, supplied in lengths 3.9m and longer.

RK73 230x28mm, supplied in lengths 3.9m and longer.

INTERNAL AND EXTERNAL CORNERS

External Timber Corners:

Western Red Cedar: RK97 and RK42.

Truwood: RK97 and RK42.

External Powder-coated Aluminium Corners:

Western Red Cedar: RKFL-31, RKFL-34 (including RKA901 timber bead), RKFL-35 (including RK41 timber bead) and RKFL-36.

Truwood: RKFL-31 and RKFL-35 (including RK41 timber bead).

Larch: RKFL-34 (including RKA901 timber bead) and RKFL-36.

Aluminium supplied in 6m lengths.

External:

Western Red Cedar, Larch or Truwood cover boards RK91 and RK92, 18.5mm thick boards in widths of 69mm and 90mm, supplied in lengths 2.4 m and longer.

Internal:

Western Red Cedar, Larch or Truwood internal corner mould RK41 19x19mm, supplied in lengths 2.4m and longer.

MOULDINGS

Western Red Cedar, Larch or Truwood eaves mould RK32 40x27mm or RK33 26x15mm supplied in lengths 2.4m and longer.






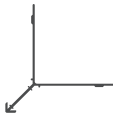

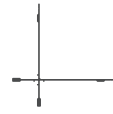


Western Red Cedar, Larch or Truwood bevelled cornice RK7 30x18x10mm, supplied in lengths 2.4m and longer.

SCRIBER

Western Red Cedar, Larch or Truwood scribes RK12 40x17mm and RK13 40x10mm supplied in selected lengths.

Western Red Cedar rustic plug 25x9.5mm supplied in random lengths.

POWDER-COATED ALUMINIUM FLASHINGS

Flashing Code	Profile	Description	Finish	Length
RKFL-09s		65mm x 65mm Internal/External Corner flashing	Powder-coated black	5.85 m
RKFL-10s		90mm x 90mm Internal/External Corner flashing	Powder-coated black	5.85 m
RKFL-11		J - mould (23.5mm)	Mill finish or powder-coated black	6.0 m
RKFL-12		20mm Cavity Closure	Mill finish or powder-coated black	6.0 m
RKFL-17		J - mould (33mm)	Mill finish or powder-coated black	6.0 m
RKFL-31		20mm External Corner Flashing	Mill finish or powder-coated black	6.0 m
RKFL-34		28mm External Corner Flashing	Mill finish or powder-coated black	6.0 m
RKFL-35		20mm External Corner Flashing	Mill finish or powder-coated black	6.0 m
RKFL-36		28mm External Corner Flashing	Mill finish or powder-coated black	6.0 m
RKFL-40		Vertical joint flashing	Mill finish or powder-coated black	6.0 m

ALUMINIUM FLASHING FINISHES

Dulux Duralloy 'Matt Black' is the standard finish on RK extrusions. This coating is suitable for all non-exposed flashings and also in non-coastal environments.

Important: For exposed flashings in coastal zones, Dulux Duratec shall be used.

Visible/exposed flashings (sill flashing, two-piece head flashing and some jamb flashings) are also available in mill-finish. This allows coating in Duratec for coastal environments, or alternative colours to Matt Black and alternative finishes, such as anodised coatings to match window joinery.

When fixing aluminium, only use stainless steel. Silicon bronze (copper) is non-compatible and should not be used.

FINISH

- BSF Band Sawn Face.
- DF Dressed Face or DFS Dressed Faced Sanded (it is recommended dressed face weatherboards are sanded prior to applying coating products).

MOISTURE CONTENT

Western Red Cedar panels are delivered to site air-dried to between 16% and 18% moisture content.

FACTORY COAT

This is a specifically designed coating process for applying stain and wood oil to our weatherboards. Dryden WoodOil is applied prior to delivery to all faces of the weatherboard profile. These uniquely formulated products will increase the durability and performance of the cladding during its in-service life. Factory coating to all faces not only enhances the visual effect of Cedar, Truwood and Larch but when maintained to manufacturer specifications, it also greatly reduces moisture penetration, limiting excessive hygroscopic movement.

AT TIME OF ORDER

- Check dressed faced weatherboards are face sanded, if being factory oiled.
- Sign off profile confirmation check sheet.
- Sign off colour confirmation check sheet.
- Check pre-order of a minimum 4ltr of Dryden WoodOil for sealing cut or exposed edges.

HANDLING & STORAGE

Care should be taken to protect Western Red Cedar, Larch and Truwood from the elements. All plastic wrapping, timber gluts, packers and strapping should remain intact until stored in a suitable location.

Packets of rusticated weatherboards should be stored a minimum 100mm clear from the ground at all times. Storage should be in a dry enclosed location where temperature and humidity are kept relatively stable i.e. dry, dust free and free from sub trade contamination.

FRAMING

FRAMING

- All framing must comply with NZS 3604.

WALL UNDERLAYS

- Must comply with Table 23 and Clauses 9.1.5 – 9.1.7 E2/AS1.
- Flexible flashing tape as per Clause 4.3.1.1 E2/AS1.

FLEXIBLE WALL UNDERLAYS

- Flexible wall underlays shall be in accordance with Table 23 E2/AS1.
- Flexible wall underlays shall be fixed in accordance with Clause 9.1.7.1 E2/AS1.
- Be run horizontally.
- Have upper sheets lapped over lower sheets to ensure that direction of lap will allow water to be shed outside of the wall underlay.
- Be lapped not less than 75mm at horizontal joints.
- Be lapped not less than 150mm over studs and vertical joints – see manufacturer specifications for taped joint options.
- Flexible wall underlay as per Clause 9.1.5 shall be cut and dressed into all sides of openings as per figure 72A and 72B E2/AS1.
- Flexible flashing tape shall be applied to head and sill framing as shown in figure 72A and 72B E2/AS1. Flexible tape shall comply with parts 3.2 and 4 of ICOB Acceptable Criteria AC 148 and be compliant with the wall underlay.
- Extend 35mm below bottom plate or bearer.
- Be restrained from bulging - use polypropylene tape at 300mm centres tape shall be fixed horizontally and drawn taut refer Clause 9.1.8.5 E2/AS1.



RIGID WALL UNDERLAYS

- Are required in Extra High wind zones refer Table 3 and Table 23 E2/AS1.
- Where walls are not lined such as gable ends and attic spaces, an air barrier compliant to Table 23 E2/AS1 shall be fixed to framing prior to installation of cavity battens. For attached garages, underlays to Clause 9.1.3.4 E2/AS1.
- Rigid wall underlays shall be fixed in accordance with Clause 9.1.7.2 E2/AS1.
- Be a minimum 6mm fibre cement sheet or 7mm H3.2 plywood.
- Be installed with sheet edges fixed over solid framing.

- Be over-fixed with a flexible wall underlay from Table 23 and installed as in Clause 9.1.7.1 E2/AS1.

Note: some proprietary systems may not require the addition of a flexible underlay.

- Flexible wall underlay as per Clause 9.1.5 shall be cut and dressed into all sides of openings as per figure 72A and 72B E2/AS1.
- Flexible flashing tape shall be applied to head and sill framing as shown in figure 72A and 72B E2/AS1. Flexible tape shall comply with parts 3.2 and 4 of ICOB Acceptable Criteria AC 148 and be compliant with the wall underlay.
- Be finished flush with the underside of bottom plate or bearer.

Air seals as per Clause 9.1.6 E2/AS1.

- Windows, doors and other penetration openings shall be provided with flexible air seals to minimise the risk of airflow carrying water into the building wall.

GROUND CLEARANCE

As per Clauses 9.1.3 and Table 18 E2/AS1.

At ground level the base of the cladding material shall overlap the concrete slab a minimum 50mm (*Note: direct fixed only wall cladding shall be offset horizontally 6mm to avoid capillary action*). The bottom edge of the cladding material shall finish 100mm above a paved surface or 175mm above an unpaved surface.

PENETRATIONS

As per Clauses 9.1.9, 9.1.9.1, 9.1.9.2, 9.1.9.3 and figure 68 E2/AS1.

DRAINED CAVITIES

As per Clauses 9.1.8 to 9.1.9.2 E2/AS1.

Cavity battens or spacers shall be compliant with B2 (durability) and be nominal 20mm in thickness and be a minimum 45mm wide.

Cavity battens shall be fixed by the wall cladding fixings, to the wall frame. Claddings are fixed through the cavity battens into the wall framing.

REQUIREMENTS

- Treatment to meet the requirements of NZS 3640.
- Be installed over wall underlay, either flexible or rigid compliant with Table 23 E2/AS1.
- Be compliant with B2/AS1.
- Be drained and open to the exterior at the bottom of the cavity.
- Vertical battens shall also be fixed at internal and external corner junctions with a minimum 10mm gap between vertical cavity battens.
- Cavity spacers as shown in figure 67 E2/AS1 horizontal spacers shall be finished 50mm minimum from vertical battens positioned with a 5 degree minimum slope.

Vermin proofing as per Clause 9.1.8.3 E2/AS1.

- Cavity closer to be used in drained cavities at the base of the wall lining and above window heads and inter storey flashings.
- Cavity closure shall provide ventilation area of 1000mm² per metre length. Provide holes or slots between 3mm and 5mm.
- Be positioned to allow a drip edge to the wall cladding of 10mm at the base of walls and 15mm above window and door head flashings.

FLASHINGS

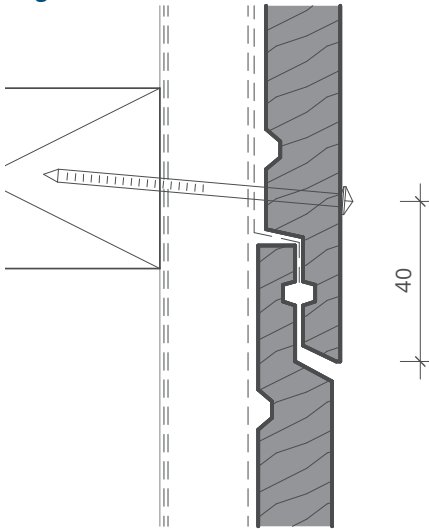
As per Clause 4.0 E2/AS1.

- Flashing material selection shall comply with Table 20 E2/AS1 and meet the compatibility of Tables 21 and 22 E2/AS1. Flashings shall have a minimum 50mm cover.
- Ensure material thicknesses are as per the requirements of Clause 4.0 E2/AS1 prior to ordering.
- Internal and external corners refer figure 79 and Clause 9.4.4.5 E2/AS1.
- Aluminium flashings to be powder coated to all faces and edges.
- Flashing dimensions as per Table 7 E2/AS1.

FIXINGS

As per Table 24 E2/AS1.

Diagram A



Direct Fixing

- Rosenfeld Kidson pentagon head annular grooved nails 60x3.2mm, stainless steel 316 or silicon bronze.

Cavity Fixing

- Rosenfeld Kidson pentagon head annular grooved nails 75x3.2mm, stainless steel 316 or silicon bronze, or 85x3.2mm when using a rigid underlay.

Windows & Doors

The weatherboard system relies on the joinery meeting the requirements of NZS 4211 for the relevant Building Wind Zone or wind pressure.

- Shall be in accordance with Clauses 9.4.6 to 9.4.7 and figures 82 and 86 E2/AS1.
- Window profiles to be selected to achieve cover shown in details.
- Wall underlays to wall openings as per Clause 9.1.5 E2/AS1.
- Sill support bar required conforming to EM6 and Clause 9.1.10.5 refer figure 72B E2/AS1.
- For Very High and Extra High wind zones seal head flashing to window flange as per figure 71b E2/AS1.

HEAD FLASHING

- Head flashings shall be fixed with a minimum 35mm cover flashing upstand with additional tape overlapped over the flashing upstand.
- Extra High wind zones require a minimum 75mm cover flashing to head flashing upstand.
- Ensure head flashings have a minimum 15 degree fall with a 5mm gap between head flashing and weatherboard refer figure 83 E2/AS1.
- Head flashings shall be fixed with stop-ends to suit the cavity depth. Head flashing shall if a J mould is used to provide 30mm cover or if scribes are used the flashing shall extend 20mm past the finished scribe refer figure 82 and 86 (a) and (c) E2/AS1.
- Window sill joinery cover shall be a minimum 8mm at the sill and 10mm minimum at jambs. Jambs shall be scribed using the RK12 profile as per figure 82 and 86 (b) E2/AS1.

Air seals as per Clause 9.1.6 E2/AS1.

- Ensure an air seal is provided with a flexible air seal to minimise the risk of airflows carrying water into the building wall. The air seal shall be provided between the reveal or frame and the wrapped opening as per figure 81 E2/AS1. Be installed over a closed cell polyethylene foam (PEF) backing rod.
- And (i) self-expanding polyurethane foam or (ii) sealant complying with clause 9.1.6 (a) and (b) E2/AS1.
- Temporary packers shall be removed after fixing.

FIXING RUSTICATED WEATHERBOARDS

LIMITATIONS

- Cedarscreen Rusticated must only be installed by a registered LBP (Licenced Building Practitioner).
- Fixing methods shall be in accordance with Clause 9.4 E2/AS1.
- Check weatherboards are factory oiled on all surfaces prior to deliver.
- Apply wood oil to all cut or exposed edges prior to installation.
- Ensure on-site provisions are appropriate, allowing for good storage and working space.
- Ensure all timber products are free from sub-trade and climatic contamination during the building process.

FIXING PROCESS

- Check weatherboard length spread and use appropriately to suit each cladding face.
- Start the fixing process from the bottom plate. Set out a storey rod and account for key measurements between the bottom plate to window sill, head and top plate. This will help set out an accurate layout and position the weatherboards accurately at openings.
- Position weatherboards, ensuring a minimum 50mm overhang of the bottom plate.

FIXINGS

- Weatherboards shall be fixed through the wall underlay to the framing in accordance with Table 24 E2/AS1.
- Fixings shall be hand driven. Do not brad nail weatherboards prior to face fixing.
- Weatherboards shall be pre-drilled prior to fixing with a single fixing to each fixing point.
- Laps shall be 25mm with a minimum 2mm gap at the overlap between boards.
- Ensure the 6x3mm weathergrooves are lined up to form a 6x6mm weathergroove.
- Locate nails 10mm above the shiplap.
- A minimum of 35mm fixing penetration into the framing is required. For fixing over a cavity use 75x3.2mm annular grooved nails, or 85x3.2mm when using a rigid underlay. For direct fixing use 60x3.2mm annular grooved stainless steel 316 or silicon bronze nails.
- Rusticated weatherboards shall be fixed to framing at a maximum 600mm centres.
- Rusticated weatherboard joints shall be made over supports and have corrosive resistant soakers or be scarf or splay cut. Position mitred edges against the prevailing wind.

WINDOWS AND DOORS

- Ensure head flashing stop-ends are in place prior to nailing weatherboards.
- Jamb shall be back flashed with RKFL-11 flashings. Adhesive fix a continuous vertical timber trim to the inner line of the flashing. Use Sika 205 Activator, 3N Primer and Sikaflex 11 FC. Trim the flashing tight under the head and in line with the joinery sill flange. Apply a continuous strip of inseal tape to the outer flange of the flashing. The width and depth of the tape should suit the joinery flange type (depth). The closed cell foam tape should compress to seal the joint between the RKFL-11 flashing and the joinery jamb flange. Trim the timber weatherboards tight into the vertical trim.
- Jamb shall be scribed with the RK12 profile or weatherproofed with a foam bond breaker, with a continuous protective sealant bead along the jamb line. Refer figure 82 and 86 (c) E2/AS1.
- Scribes are to be sealed to weatherboards.
- Diagram C shows a concealed scribe detail, utilising the RKFL- 11 profile and a 9x18.5mm timber trim. If 28mm boards are used use the RKFL-17 profile with a 9x28mm timber trim.

Diagram C

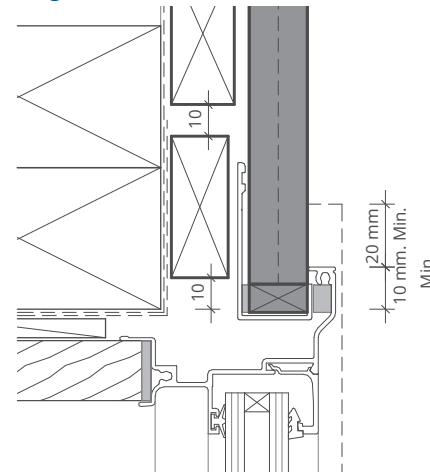
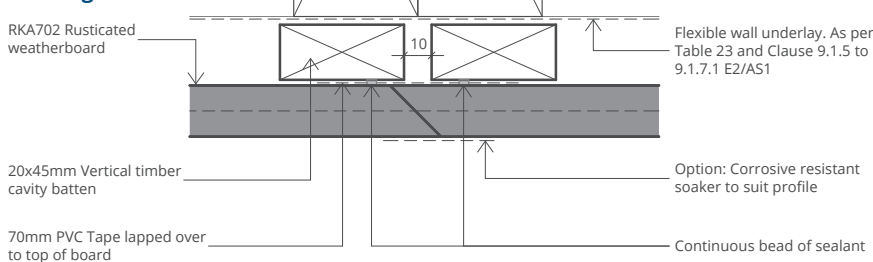


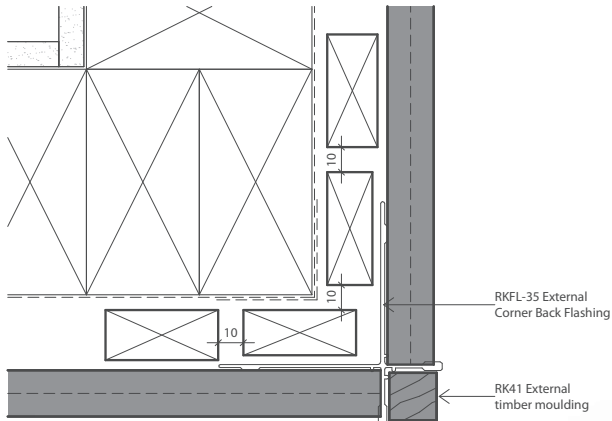
Diagram B



CORNERS

- Internal corners shall be weathertight with RKFL09 65x65mm back flashings using the RK41 corner mould.
- External corners shall be weathertight with RKFL09 65x65mm back flashing, using the RK42 or RK97 external corner. In addition, external corners can be formed with RKFL-31 or 35 flashings. Or for 28mm profiles use the RKFL-34 or 36 profile. The flashings are supplied in powder-coated aluminium and have a flashing cover of 65mm. Refer Diagram D.

Diagram D



FINISHING

- Apply the finishing coat of Dryden WoodOil.
Use or Dryden WoodOil as per manufacturer specifications.

Recommended coverage rates for onsite application of Dryden WoodOil. (These are indicative rates and coverage may vary depending on site conditions).

Dryden WoodOil is a deep, migrating oil that not only adds colour but enhances the timber's natural properties, protecting surface fibres and stabilising the timber's cell structure. To ensure an optimum performance level is achieved your cladding should be annually cleaned and maintained in accordance with Dryden manufacturer maintenance schedules.

- Recommended coverage rate for BSF 8-10 m² per ltr.
- Recommended coverage rate for DF 10-12 m² per ltr.



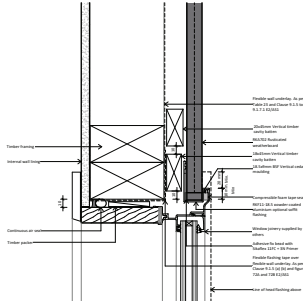


WORKINGSPEC

RUSTICATED QR CODE SHEET

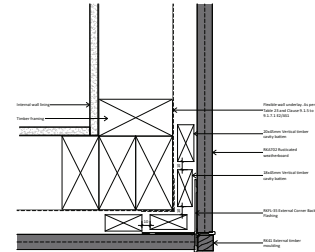
STANDARD WINDOW TRIMMING

<http://wksp.nz/rk-hrw-rkrc02a>



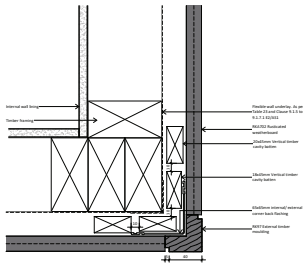
RKFL-35 EXT. CORNER INSTALLATION

<http://wksp.nz/rk-hrw-rkrc26>



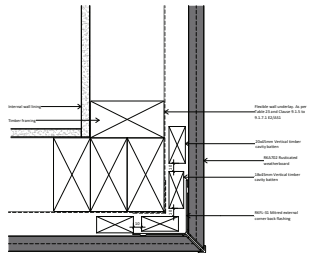
RK97 EXT. CORNER INSTALLATION

<http://wksp.nz/rk-hrw-rkrc23>



RKFL-31 EXT. CORNER INSTALLATION

<http://wksp.nz/rk-hrw-rkrc25>



interactive assembly instructions available

To view interactive, 3D assembly instructions install the **WorkingSpec** app and scan the appropriate QR code, or visit the website listed.

Get **WorkingSpec** from the App Store or Google Play.



E: rk@rosenfeldkidson.co.nz
W: www.rosenfeldkidson.co.nz
www.cedarscreen.co.nz

Postal Address: P O Box 621,
Shortland Street, Auckland 1140

Auckland:
T: +64 9 573 0503
F: +64 9 573 0504
513 Mount Wellington Highway,
Mount Wellington,
Auckland 1060

Christchurch:
T: +64 3 349 3316
F: +64 3 349 3317
15 Edmonton Road, Hornby,
Christchurch 8042