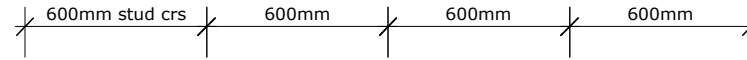
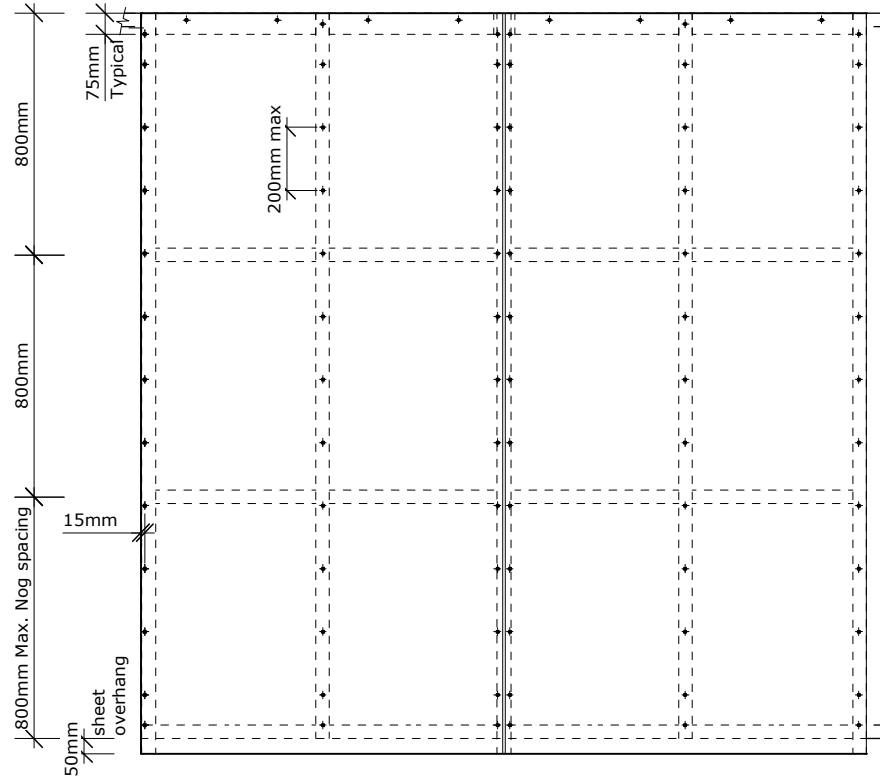


BGC

Fibre Cement



Note 1:
Direct Fix: BGC Duragroove™ sheet fixed with 40x2.8mm Fibre Cement Nail at 200mm centre's up to very highwind zone or ND50 Stainless Steel Brad at 150mm centre's for low wind zone and 100mm centre's for medium wind zone and 75mm centre's for high wind zone.



PROFILE BGC Duragroove™

DATE Nov 2011

DETAIL Direct Fixed Fixing Sheet Set out

SCALE 1:25 @ A4

DETAIL NO. D03