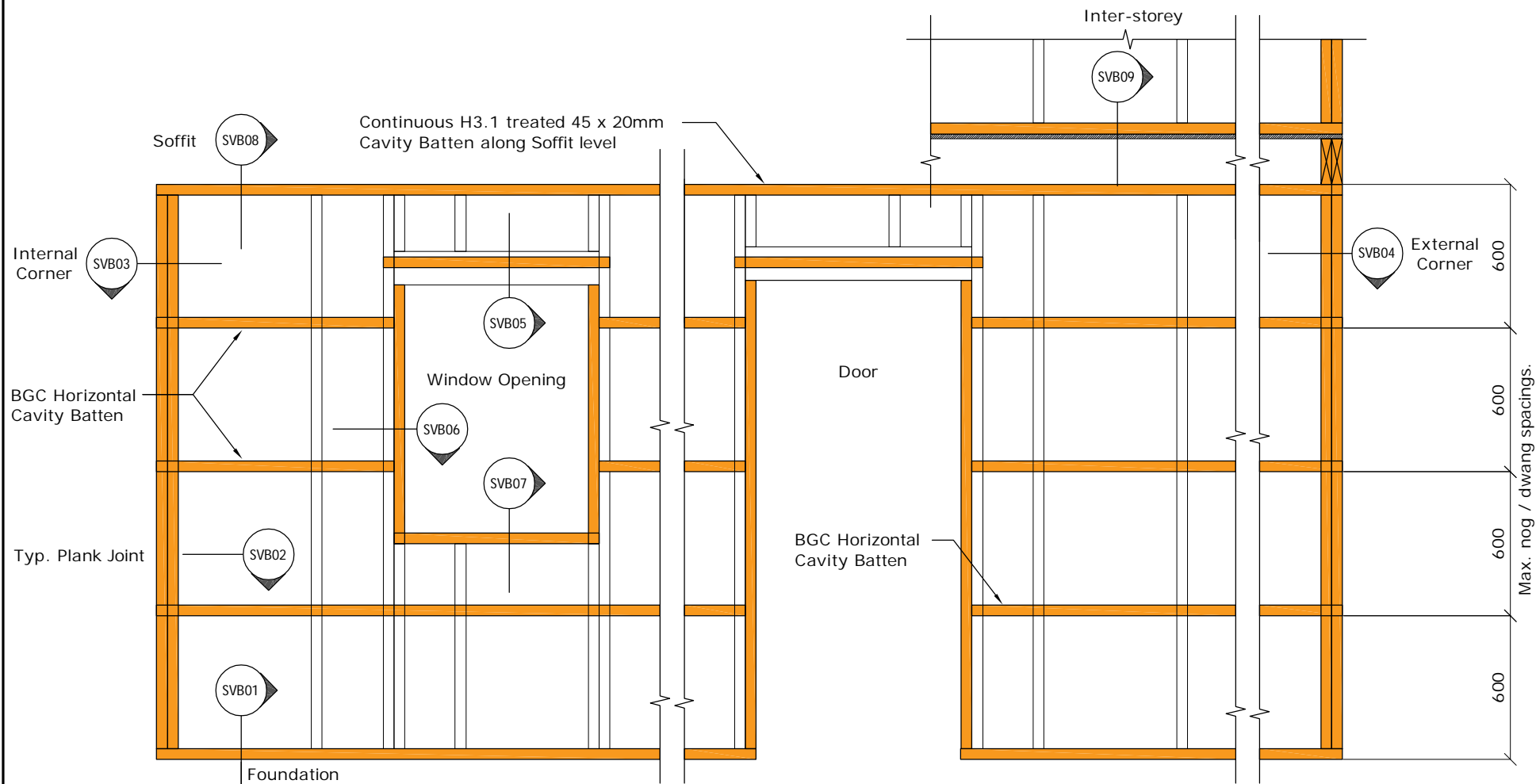


BGC



Fibre Cement



PROFILE **BGC Stratum™ and Stratum™ Duo**
(Vertical Installation)

DETAIL **Batten Layout - Elevation**
(over framing)

DATE Oct 2019

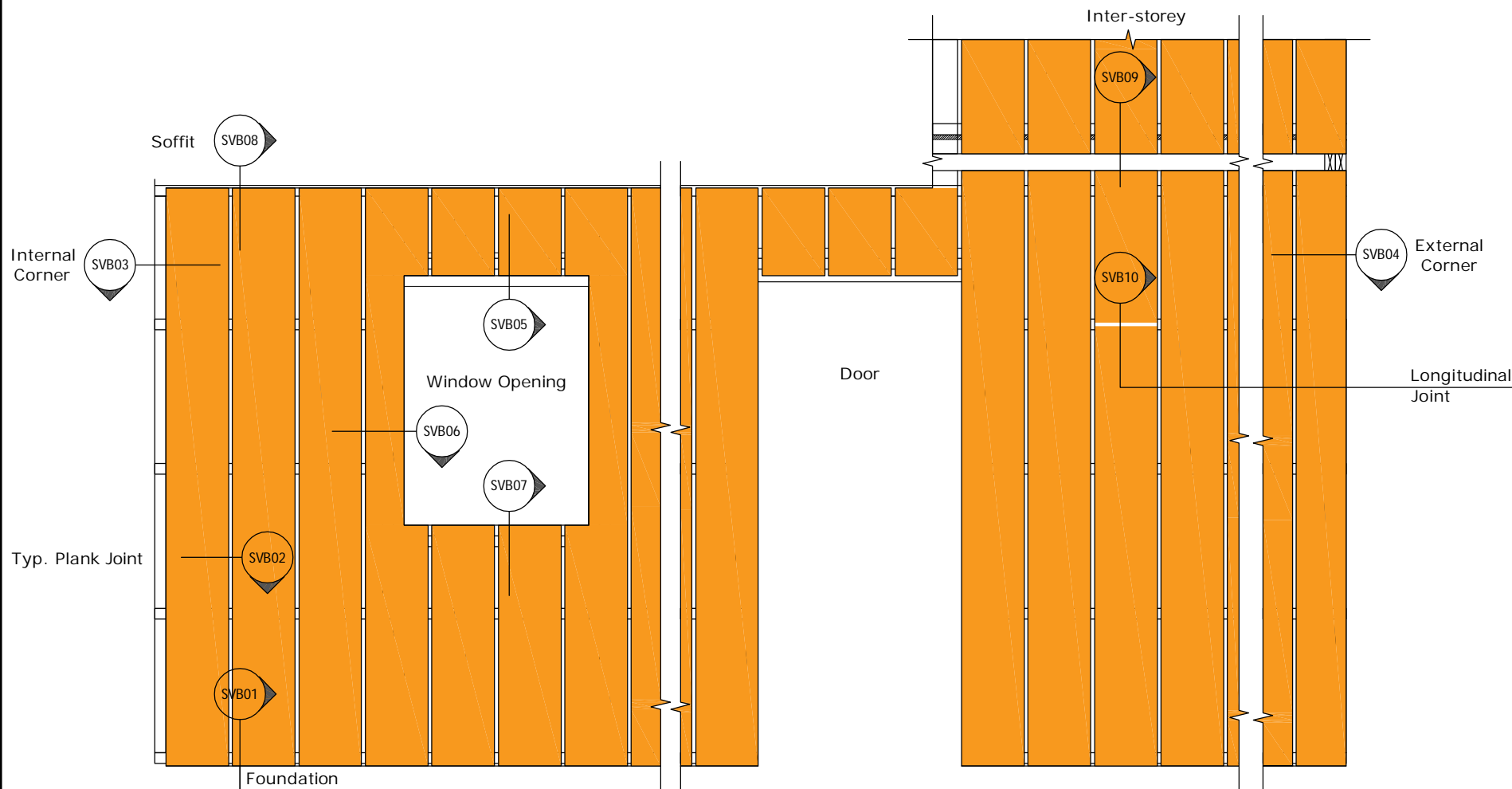
SCALE 1:25 @ A4

DETAIL NO. **SV-001**

BGC



Fibre Cement



PROFILE BGC Stratum™ and Stratum™ Duo
(Vertical Installation)

DATE Oct 2019

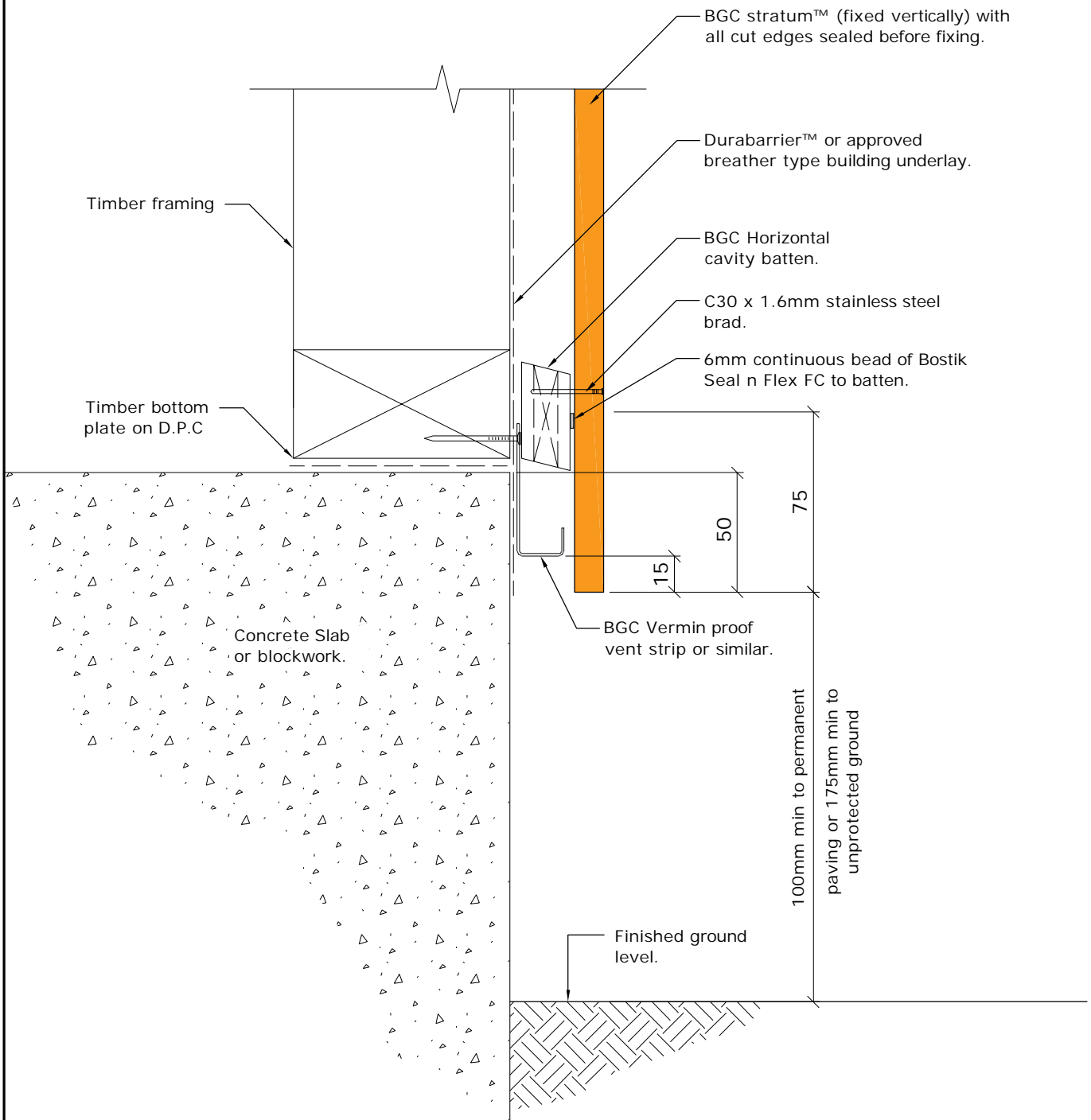
DETAIL Plank Layout - Elevation
(over framing and battens)

SCALE 1:25 @ A4

DETAIL NO. SV-002

BGC

Fibre Cement



PROFILE **BGC Stratum™ and Stratum™ Duo (Vertical Installation)**

DETAIL **Foundation Detail**

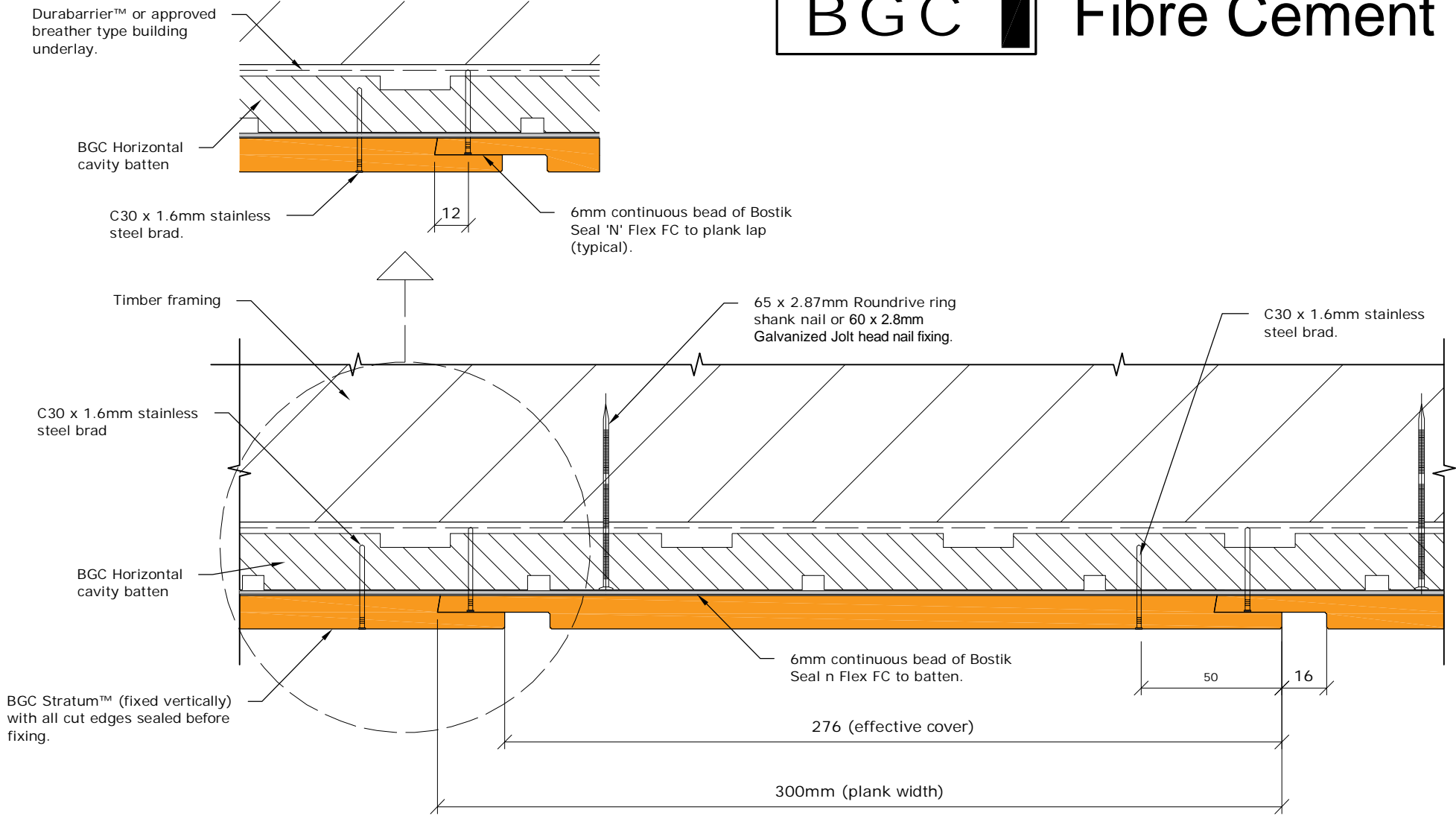
DATE Oct 2019

SCALE 1:2.5 @ A4

DETAIL NO. **SVB-01**



Fibre Cement



PROFILE **BGC Stratum™ and Stratum™ Duo (Vertical Installation)**

DATE Oct 2019

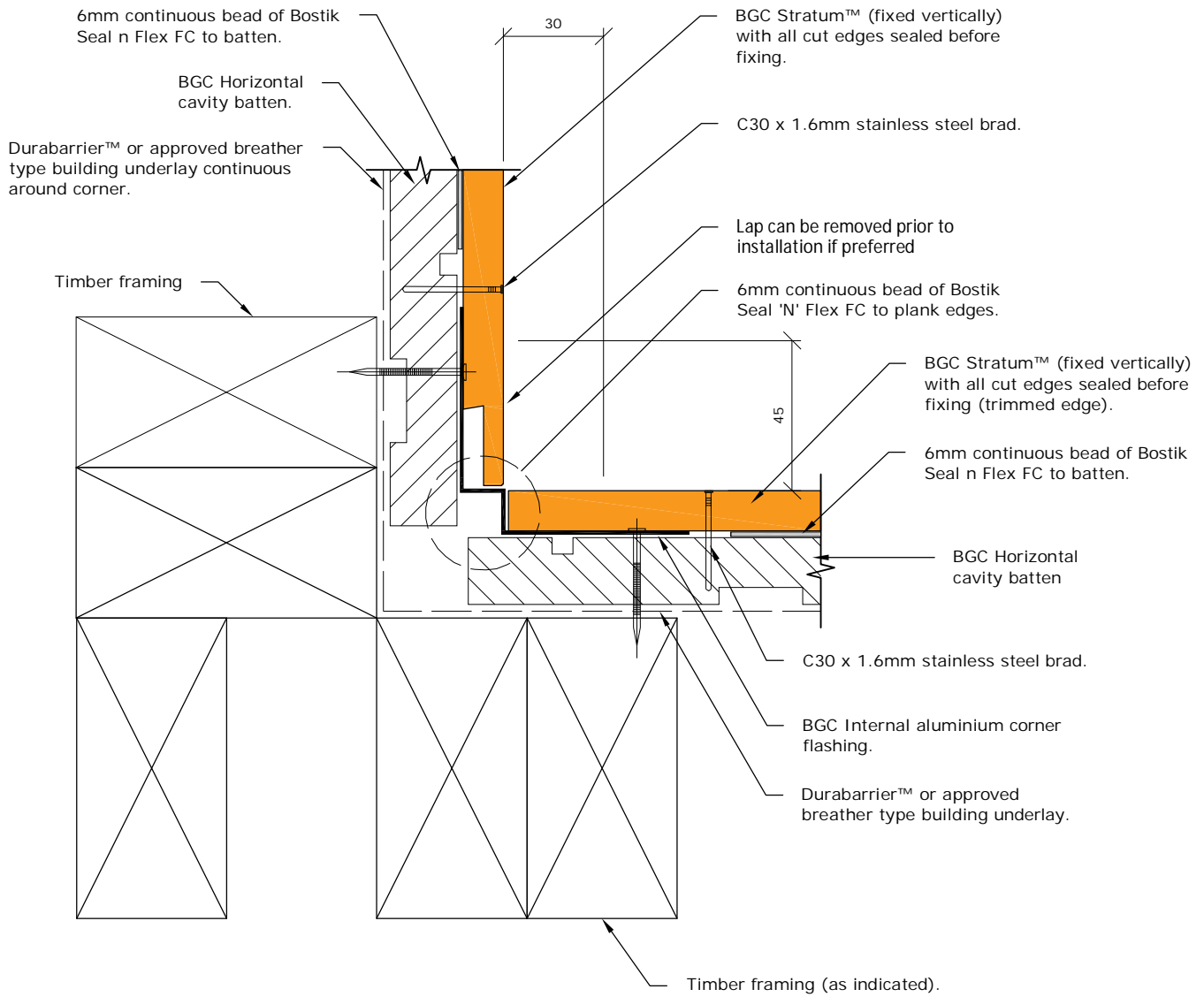
DETAIL **Typical Plank Joint Detail**

SCALE 1:2 @ A4

DETAIL NO. **SVB-02**



Fibre Cement



PROFILE **BGC Stratum™ and Stratum™ Duo**
(Vertical Installation)

DETAIL **Internal Corner Detail**

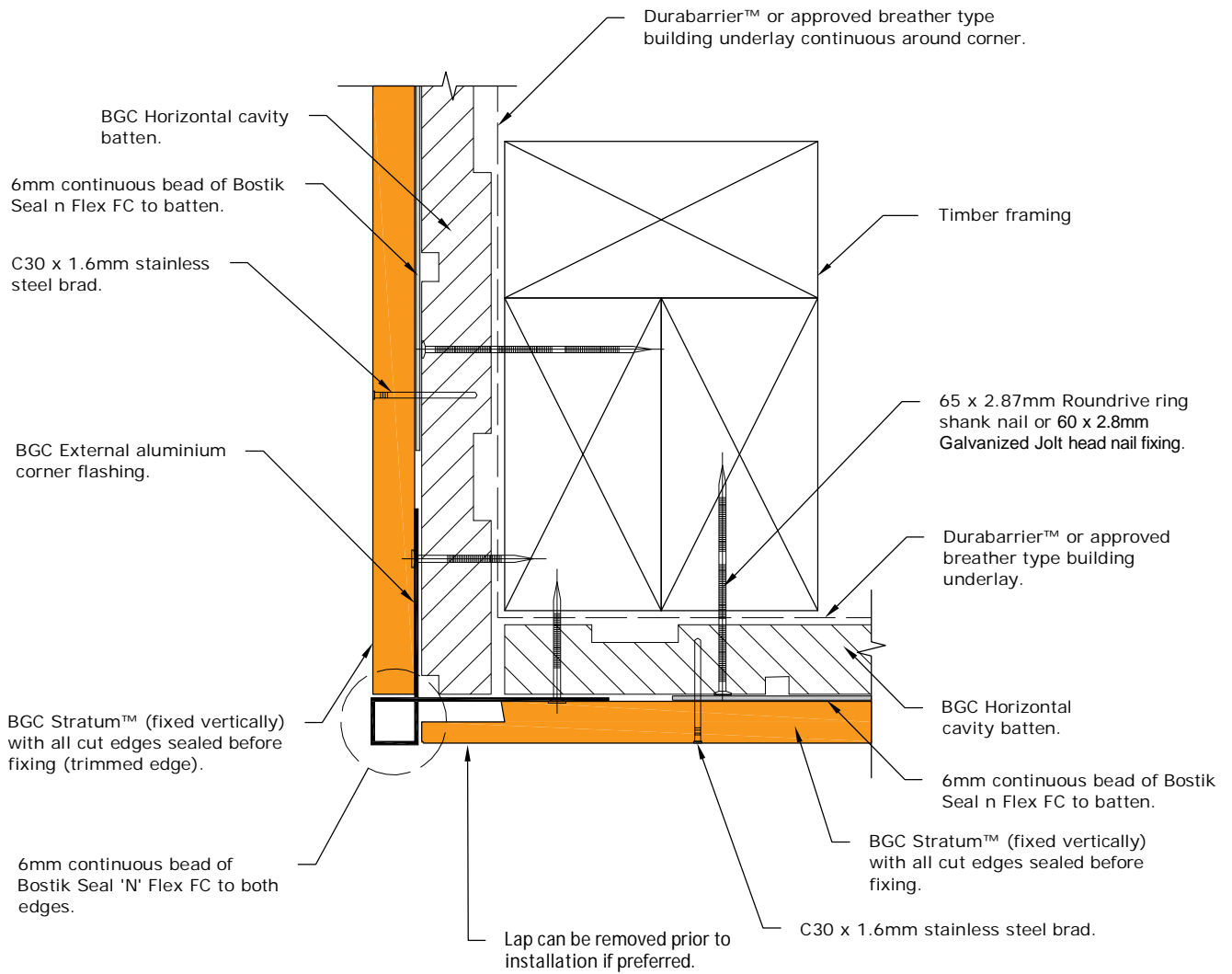
DATE Oct 2019

SCALE 1:2 @ A4

DETAIL NO. **SVB-03**



Fibre Cement



PROFILE **BGC Stratum™ and Stratum™ Duo (Vertical Installation)**

DATE Oct 2019

DETAIL **External Corner Detail**

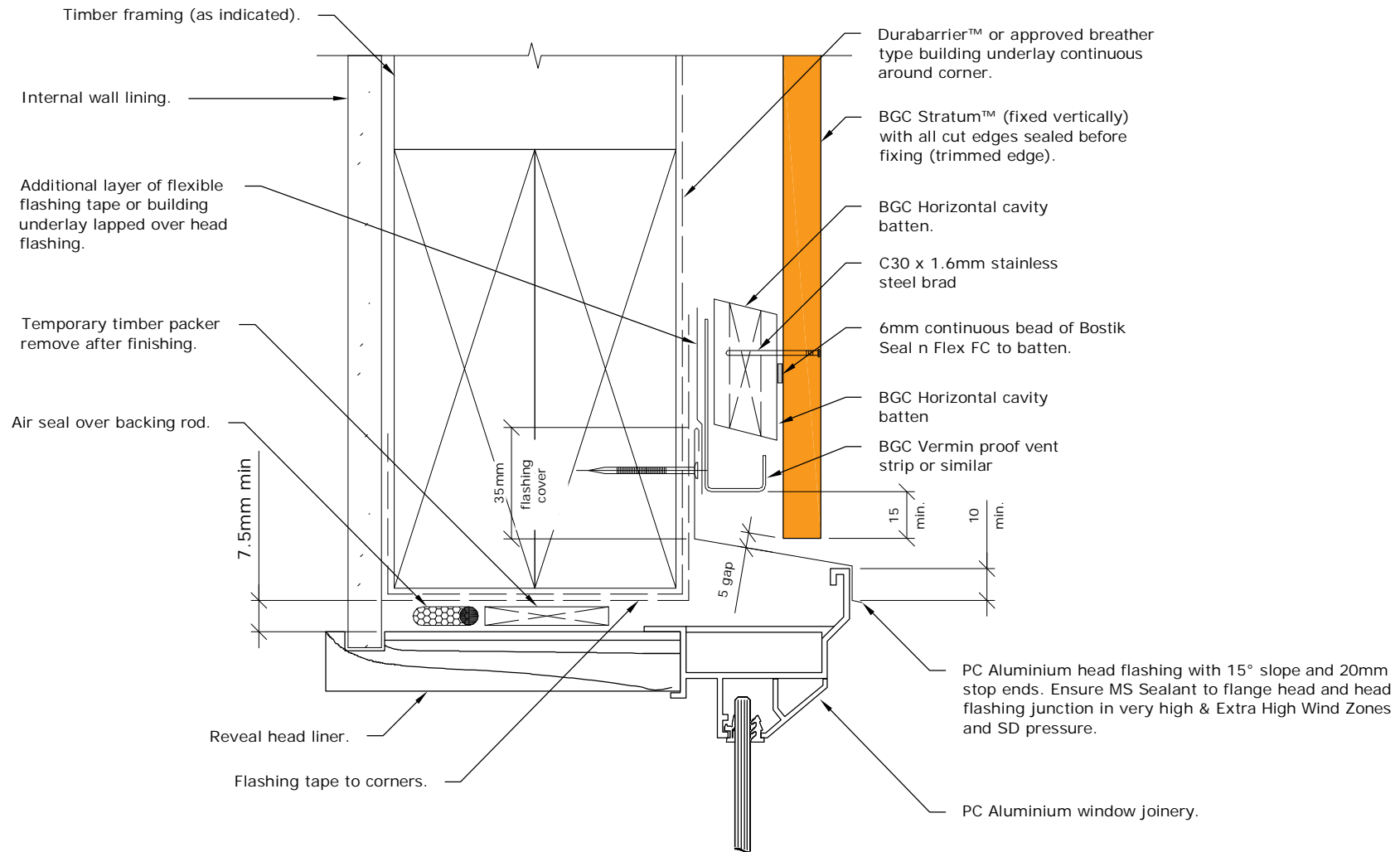
SCALE 1:2 @ A4

DETAIL NO. **SVB-04**

BGC



Fibre Cement



PROFILE **BGC Stratum™ and Stratum™ Duo**
(Vertical Installation)

DETAIL **Window Head Detail**

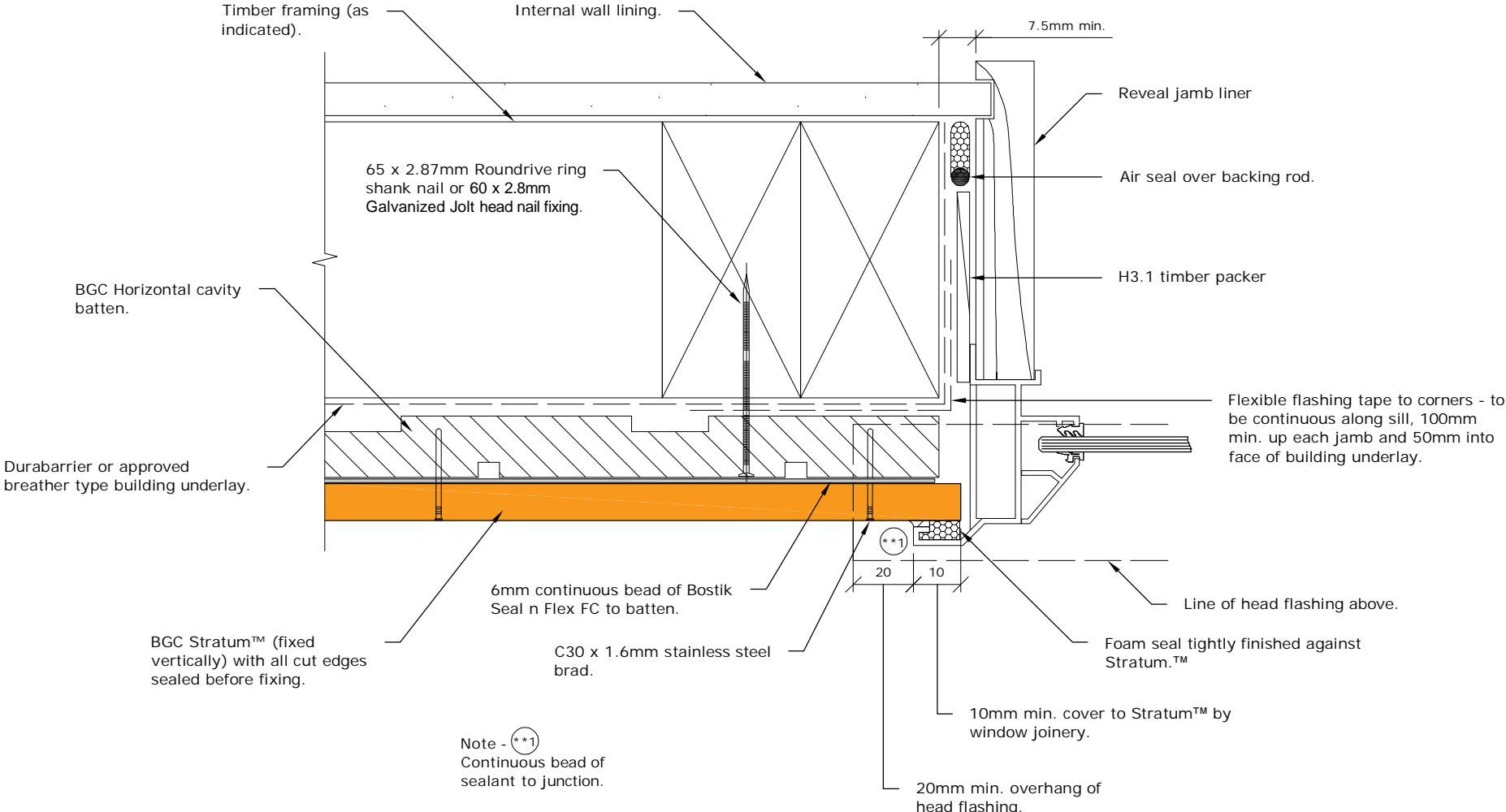
DATE Oct 2019

SCALE 1:2 @ A4

DETAIL NO. **SVB-05**



Fibre Cement



PROFILE **BGC Stratum™ and Stratum™ Duo (Vertical Installation)**

DETAIL **Window Jamb Detail**

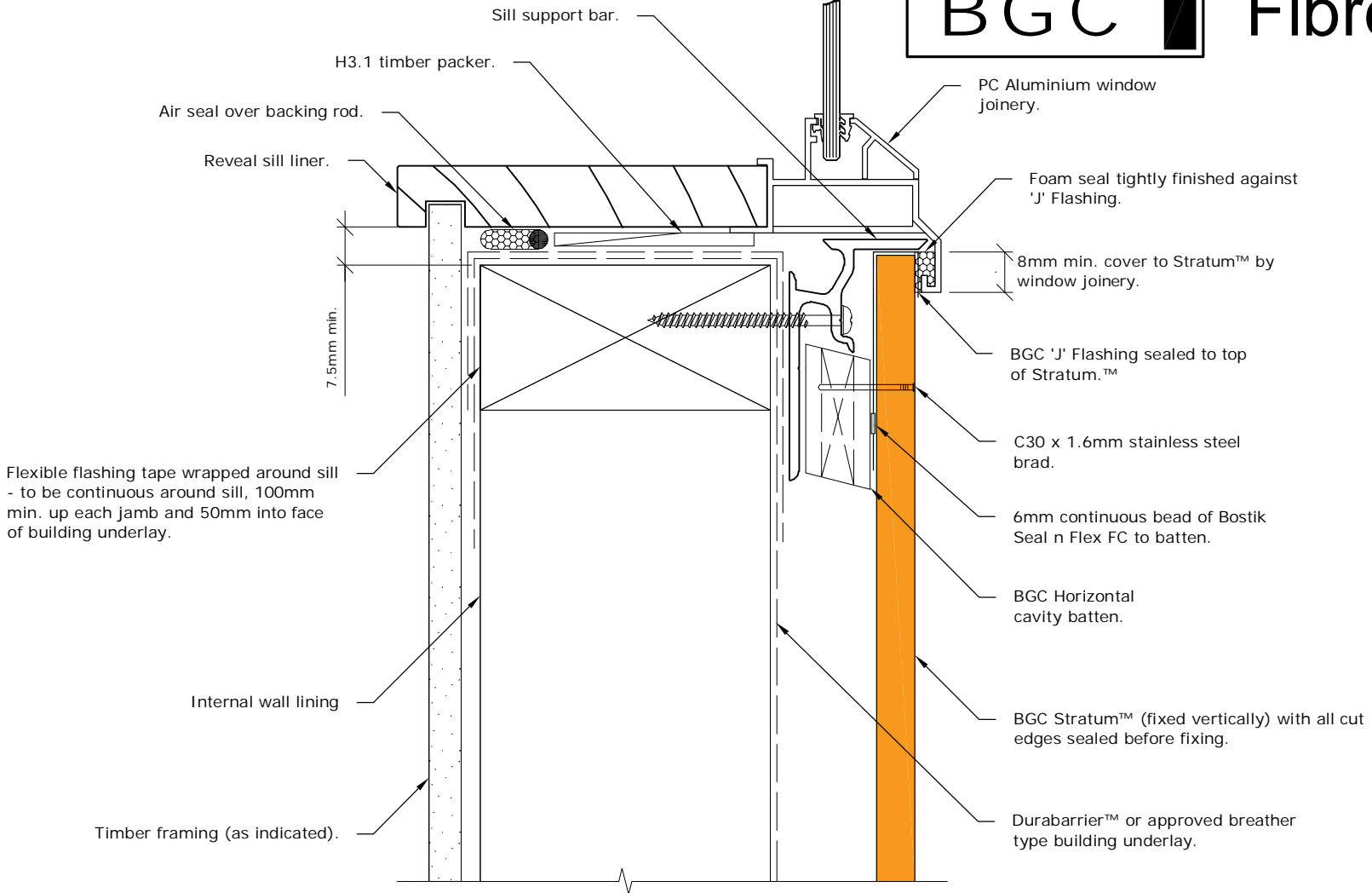
DATE **Oct 2019**

SCALE **1:2 @ A4**

DETAIL NO. **SVB-06**



Fibre Cement



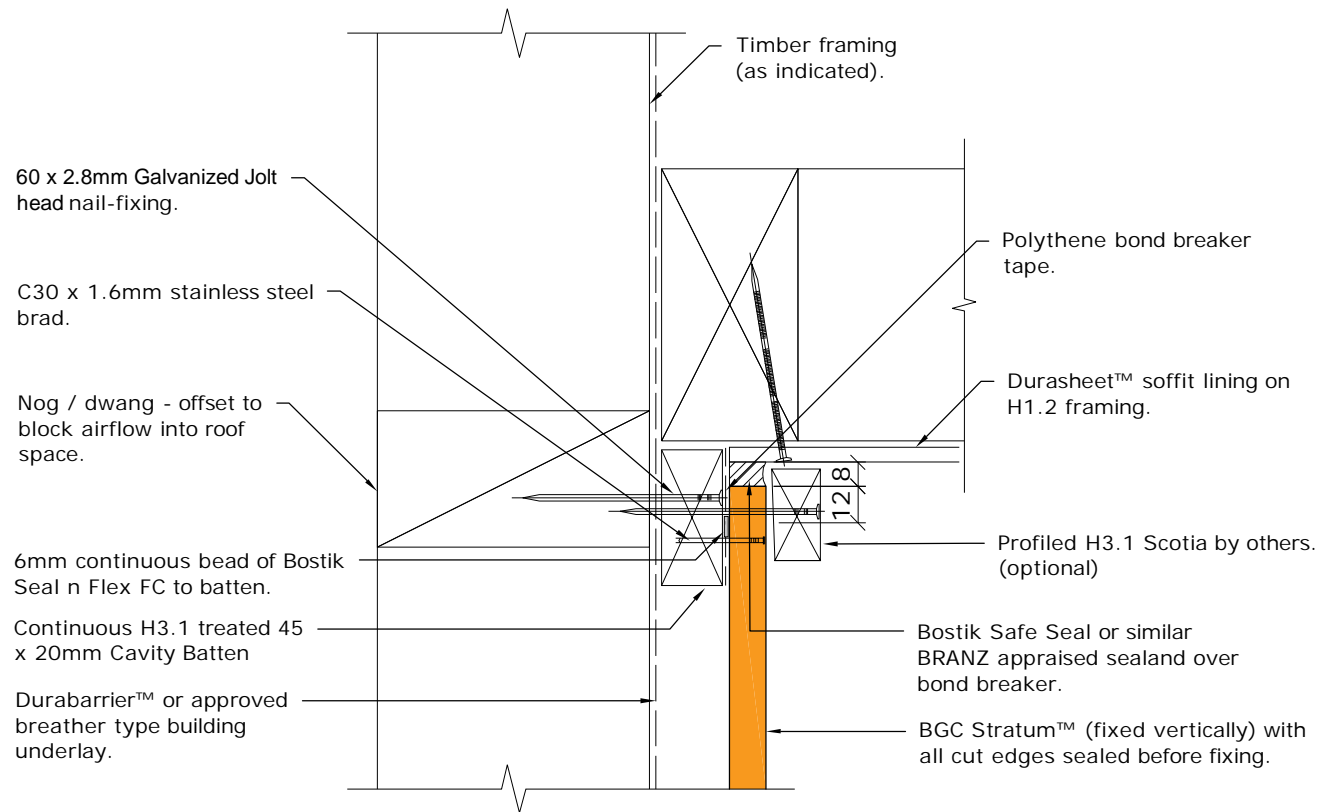
PROFILE **BGC Stratum™ and Stratum™ Duo**
(Vertical Installation)
DETAIL **Window Sill Detail**

DATE Oct 2019
SCALE 1:2 @ A4
DETAIL NO. **SVB-07**

BGC



Fibre Cement



PROFILE

**BGC Stratum™ and Stratum™ Duo
(Vertical Installation)**

DETAIL

Soffit Detail

DATE Oct 2019

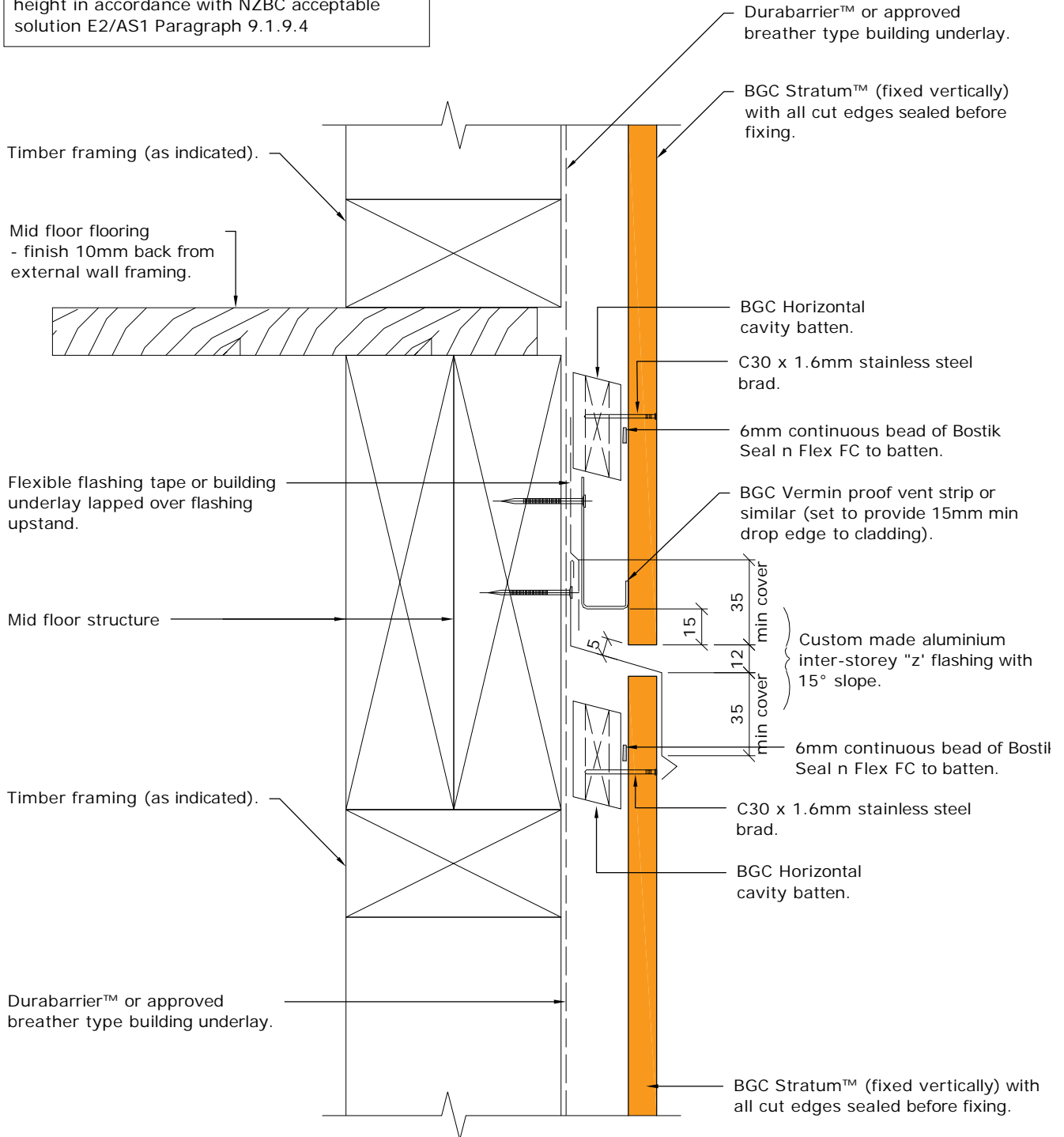
SCALE 1:2.5 @ A4

DETAIL NO. **SVB-08**

BGC

Fibre Cement

Note: Inter-story junctions in claddings over drained cavities shall be formed for walls to limit cavities to maximum 2 stories or 7m in height in accordance with NZBC acceptable solution E2/AS1 Paragraph 9.1.9.4



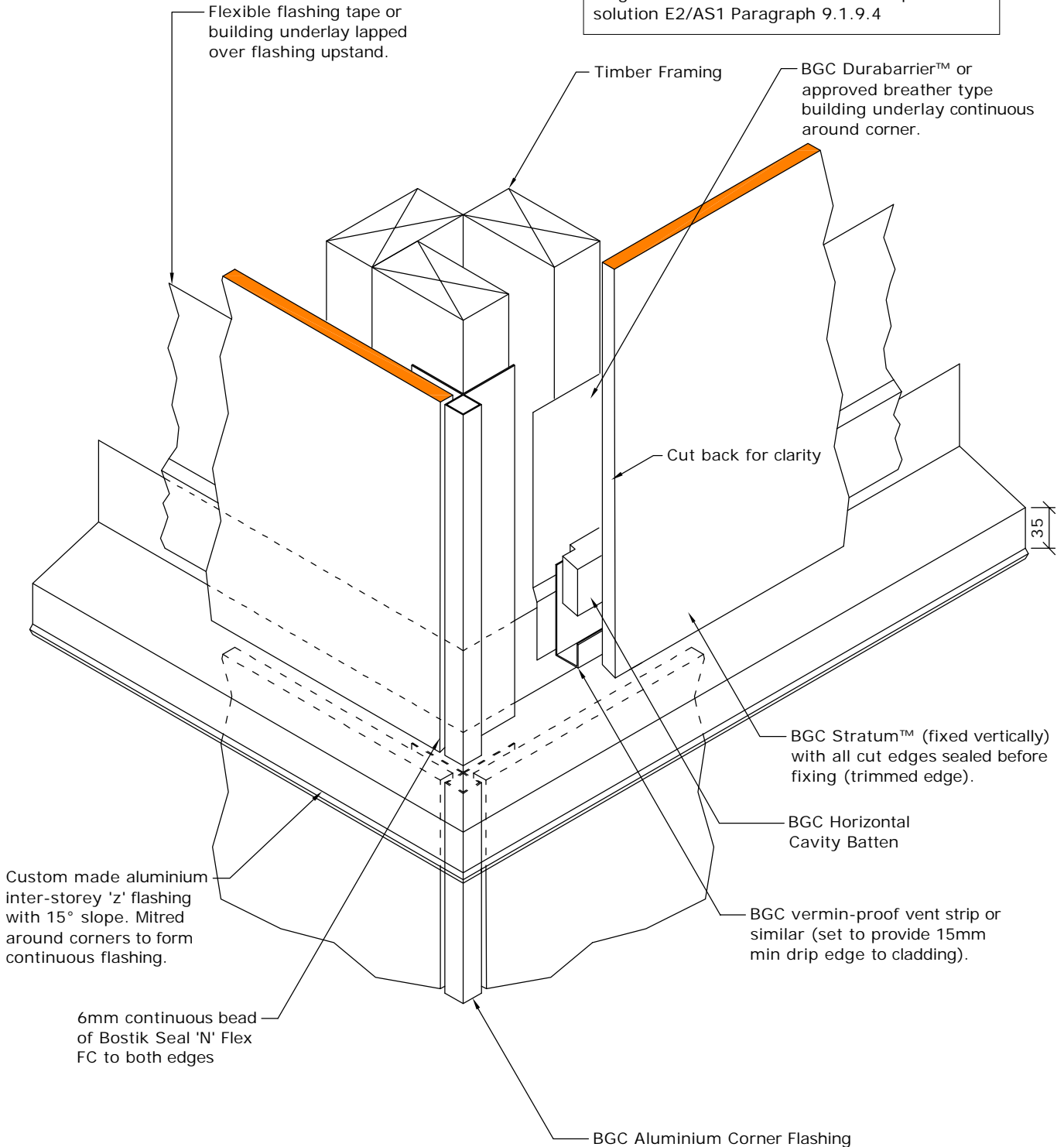
PROFILE **BGC Stratum™ and Stratum™ Duo**
(Vertical Installation)
DETAIL **Inter-storey Drainage Detail**

DATE Oct 2019
SCALE 1:2.5 @ A4
DETAIL NO. **SVB-09**

BGC

Fibre Cement

Note: Inter-story junctions in claddings over drained cavities shall be formed for walls to limit cavities to maximum 2 stories or 7m in height in accordance with NZBC acceptable solution E2/AS1 Paragraph 9.1.9.4



PROFILE

**BGC Stratum™ and Stratum™ Duo
(Vertical Installation)**

DATE Oct 2019

SCALE 1:5 @ A4

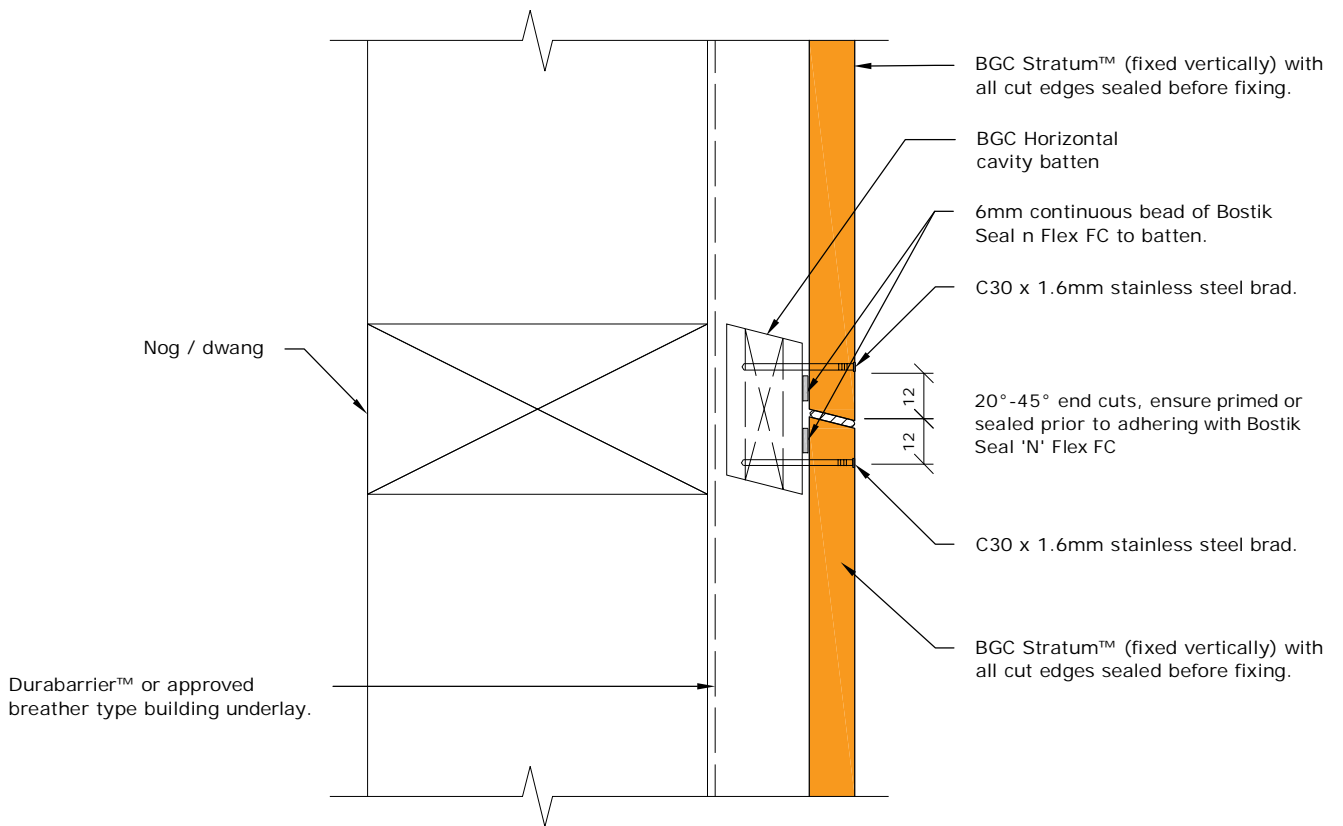
DETAIL

Inter-Storey Drainage - External Corner

DETAIL NO. **SVB-09a**



Fibre Cement



PROFILE **BGC Stratum™ and Stratum™ Duo**
(Vertical Installation)

DETAIL **Plank Joint Detail (Longitudinal)**

DATE Oct 2019

SCALE 1:2 @ A4

DETAIL NO. **SVB-10**

BGC



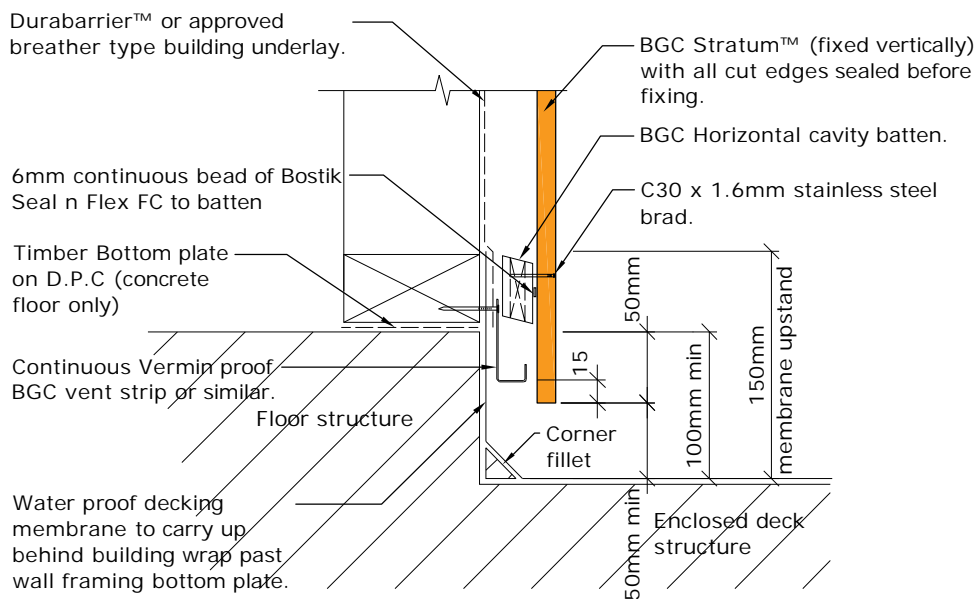
Fibre Cement

Cavity Batten Note:

Refer to cavity batten layout for batten sizes, types, spacing's & fixings.

Cladding fixing note:

Refer to cladding fixing layout for all fixing types & spacing's



PROFILE **BGC Stratum™ and Stratum™ Duo**
(Vertical Installation)
DETAIL **Enclosed Deck Detail**
Cavity Construction

DATE Oct 2019
SCALE 1:5 @ A4
DETAIL NO. **SVB-11**

BGC



Fibre Cement

Cavity Batten Note:

Refer to cavity batten layout for batten sizes, types, spacing's & fixings

Cladding fixing note:

Refer to cladding fixing layout for all fixing types & spacing's

Fold ends of head flashing to form stop ends

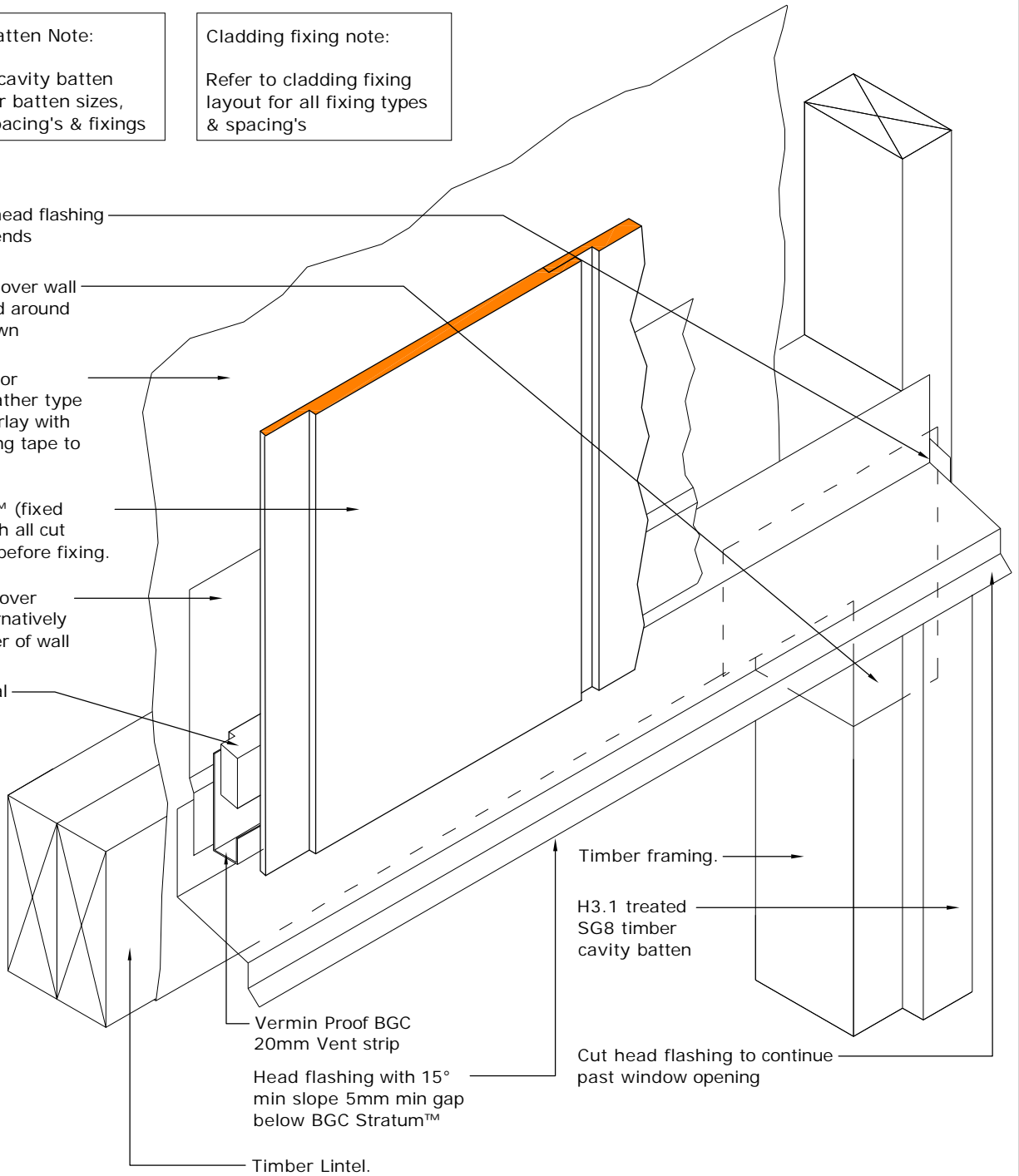
Flashing tape over wall underlay fitted around corner as shown

Durabarrier™ or approved breather type Building underlay with flexible flashing tape to corners.

BGC Stratum™ (fixed vertically) with all cut edges sealed before fixing.

Flashing tape over flashing (alternatively use extra layer of wall underlay)

BGC Horizontal cavity Batten.



Note where Durabarrier™ is used flashing tape must be applied to the entire opening

PROFILE

**BGC Stratum™ and Stratum™ Duo
(Vertical Installation)**

DATE

Oct 2019

DETAIL

**Window Head/Jamb Junction Detail
Cavity Construction**

SCALE

1:5 @ A4

DETAIL NO.

SVB-12

BGC



Fibre Cement

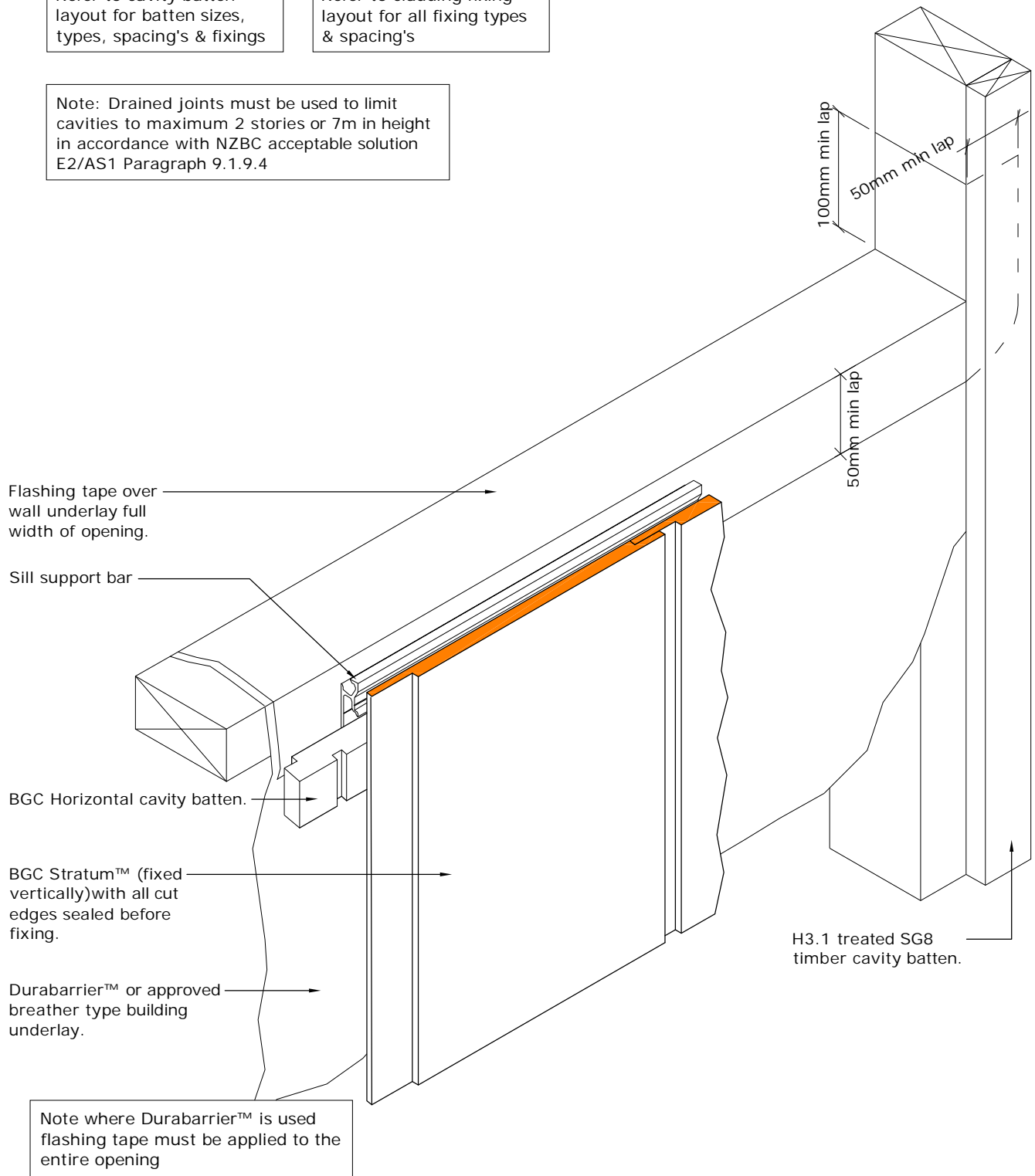
Cavity Batten Note:

Refer to cavity batten layout for batten sizes, types, spacing's & fixings

Cladding fixing note:

Refer to cladding fixing layout for all fixing types & spacing's

Note: Drained joints must be used to limit cavities to maximum 2 stories or 7m in height in accordance with NZBC acceptable solution E2/AS1 Paragraph 9.1.9.4



PROFILE

**BGC Stratum™ and Stratum™ Duo
(Vertical Installation)**

DATE Oct 2019

DETAIL

**Window Sill/Jamb Junction Detail
Cavity Construction**

SCALE 1:5 @ A4

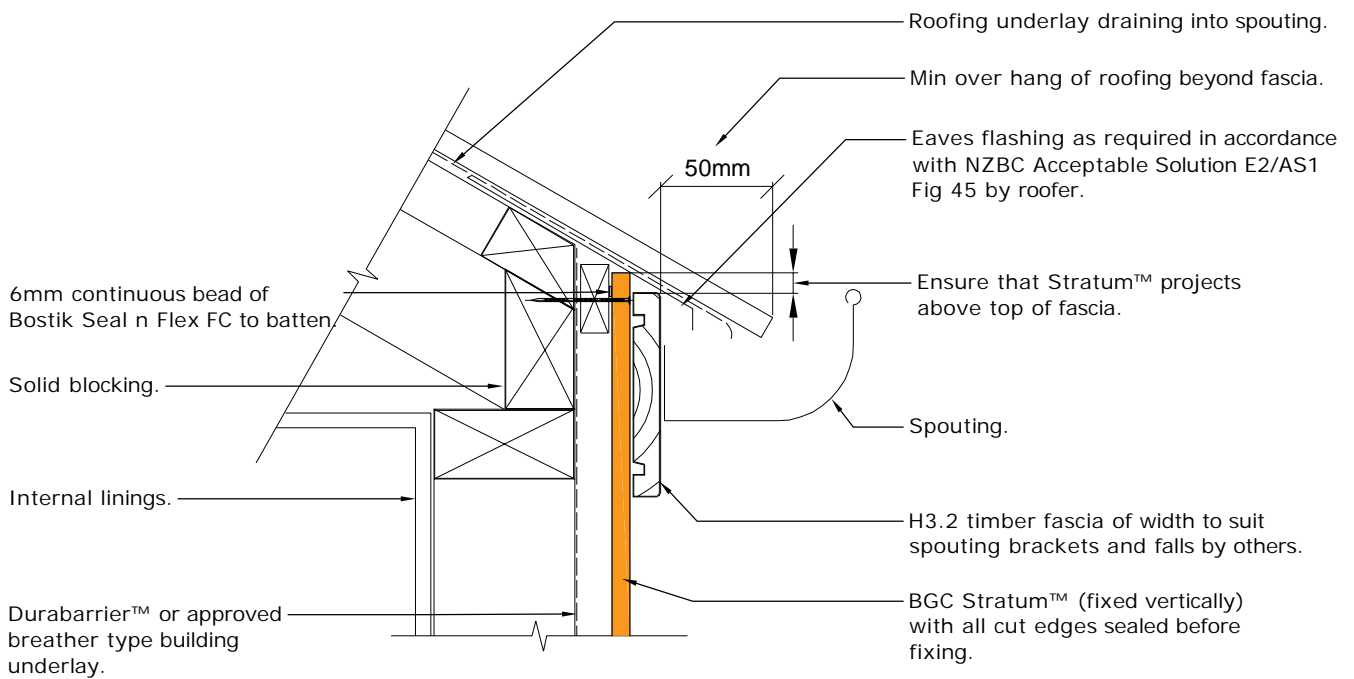
DETAIL NO. **SVB-13**



Fibre Cement

Cavity Batten Note:
Refer to cavity batten layout for batten sizes, types, spacing's & fixings

Cladding fixing note:
Refer to cladding fixing layout for all fixing types & spacing's



PROFILE **BGC Stratum™ and Stratum™ Duo (Vertical Installation)**

DETAIL **Eaves With No Soffit Detail Cavity Construction**

DATE Oct 2019

SCALE 1:5 @ A4

DETAIL NO. **SVB-15**



Fibre Cement

Cavity Batten Note:
Refer to cavity batten layout for batten sizes, types, spacing's & fixings

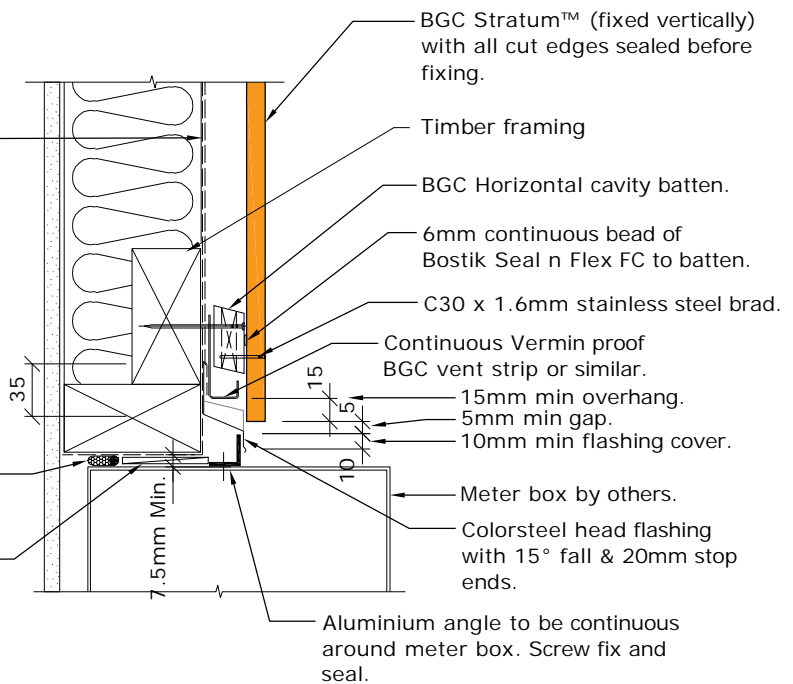
Cladding fixing note:
Refer to cladding fixing layout for all fixing types & spacing's

Durabarrier™ or approved breather type building underlay. dressed into opening with flexible flashing tape to corners.

35mm Min upstand to head flashing

Air seal over PEF rod.

H3.1 timber packer.



Note. Where Durabarrier™ is used flashing tape must be applied to the entire opening

PROFILE **BGC Stratum™ and Stratum™ Duo (Vertical Installation)**
DETAIL **Meter Box Head Detail Cavity Construction**

DATE Oct 2019
SCALE 1:5 @ A4
DETAIL NO. **SVB-16**

BGC

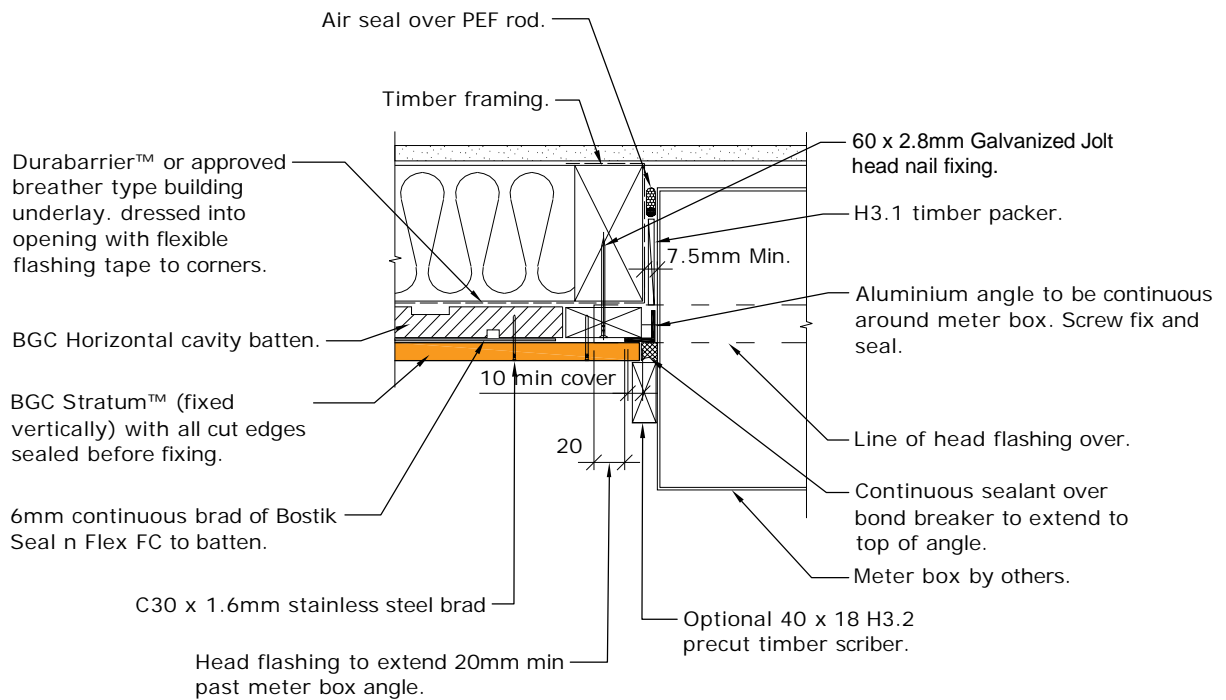
Fibre Cement

Cavity Batten Note:

Refer to cavity batten layout for batten sizes, types, spacing's & fixings

Cladding fixing note:

Refer to cladding fixing layout for all fixing types & spacing's



Note. Where Durabarrier™ is used flashing tape must be applied to the entire opening

PROFILE **BGC Stratum™ and Stratum™ Duo**
(Vertical Installation)

DETAIL **Meter Box Jamb Detail**
Cavity Construction

DATE Oct 2019

SCALE 1:5 @ A4

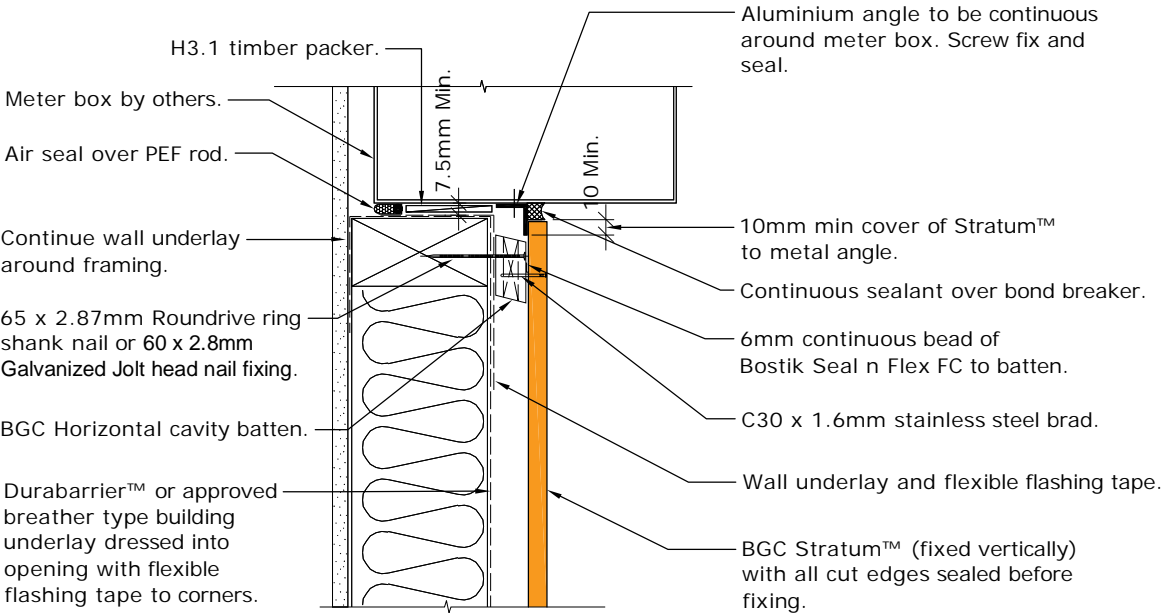
DETAIL NO. **SVB-17**

BGC

Fibre Cement

Cavity Batten Note:
Refer to cavity batten layout for batten sizes, types, spacing's & fixings

Cladding fixing note:
Refer to cladding fixing layout for all fixing types & spacing's



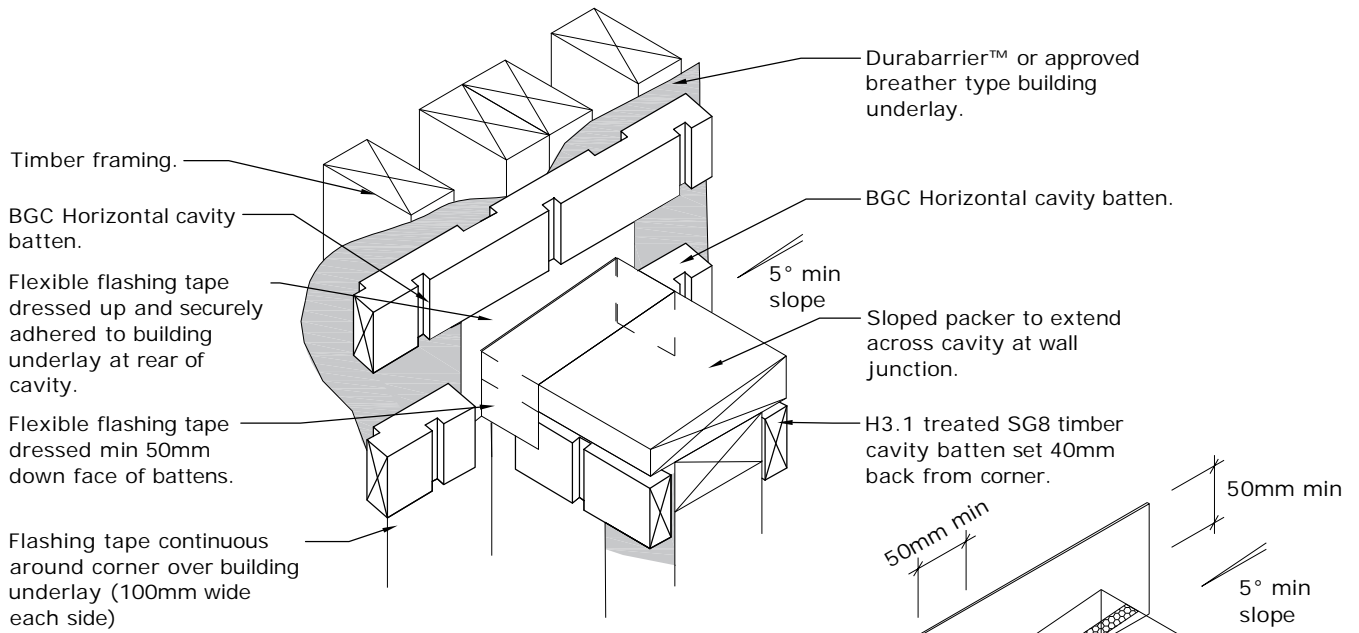
Note. Where Durabarrier™ is used flashing tape must be applied to the entire opening

PROFILE **BGC Stratum™ and Stratum™ Duo (Vertical Installation)**
DETAIL **Meter Box Sill Detail Cavity Construction**

DATE **Oct 2019**
SCALE **1:5 @ A4**
DETAIL NO. **SVB-18**

BGC

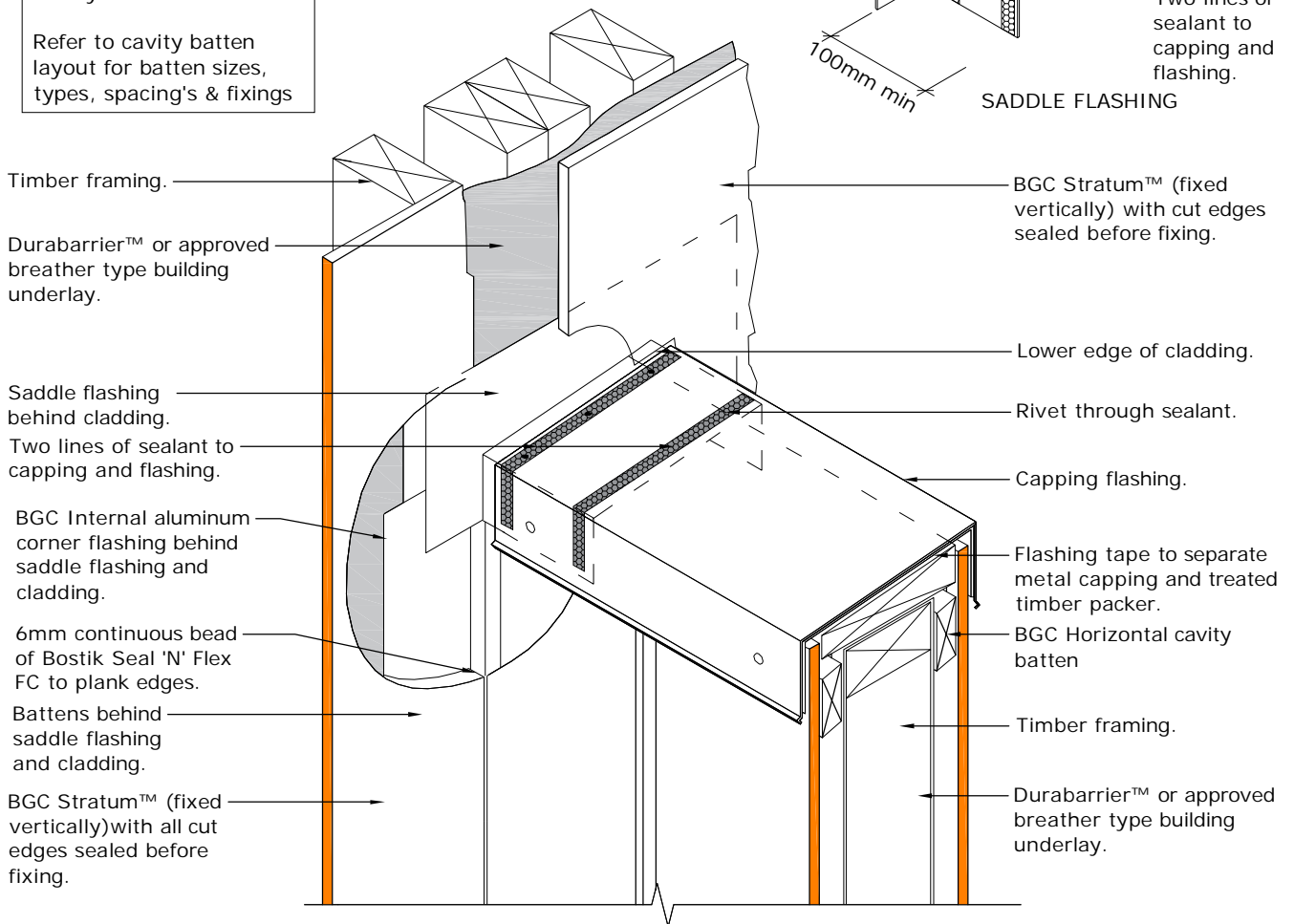
Fibre Cement



FLEXIBLE FLASHING INSTALLATION

Cavity Batten Note:

Refer to cavity batten layout for batten sizes, types, spacing's & fixings



SADDLE FLASHING

PROFILE

**BGC Stratum™ and Stratum™ Duo
(Vertical Installation)**

DATE Oct 2019

DETAIL

**Enclosed Balustrade-Wall Junction 3D
Cavity Construction**

SCALE 1:5 @ A4

DETAIL NO. **SVB-19**



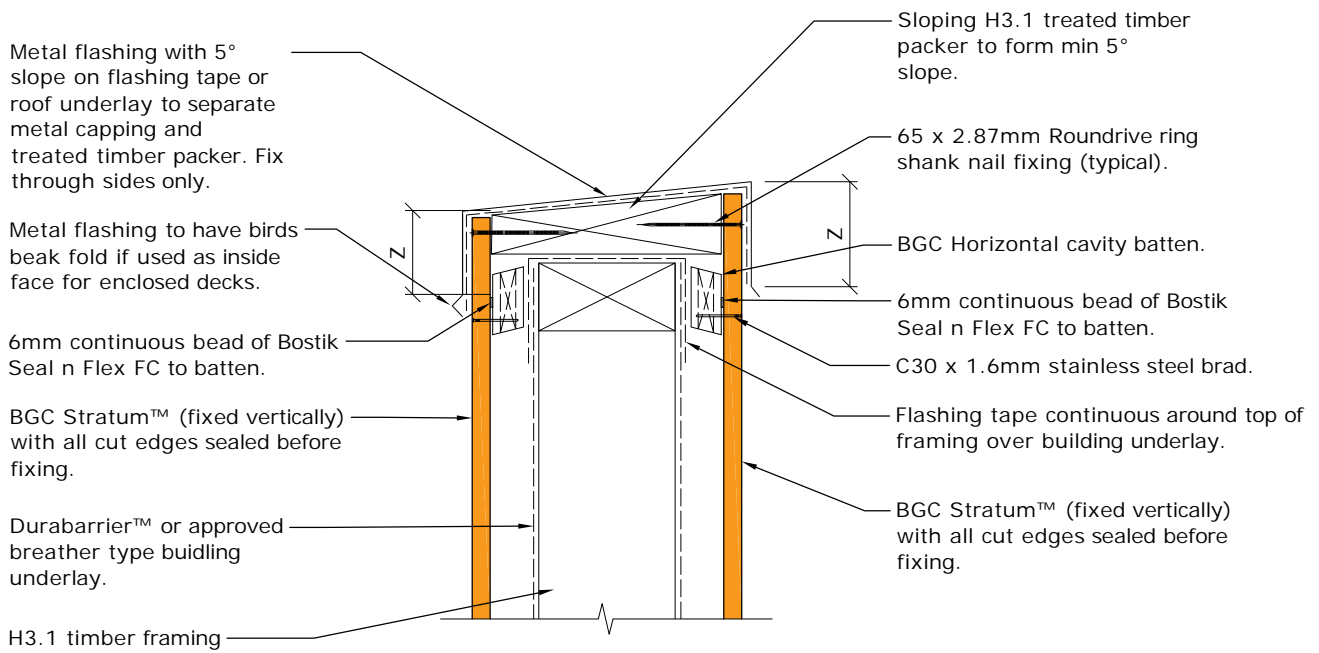
Fibre Cement

Cavity Batten Note:

Refer to cavity batten layout for batten sizes, types, spacing's & fixings

Cladding fixing note:

Refer to cladding fixing layout for all fixing types & spacing's



Note:
Z = Refer to NZBC E2 / AS1 Table 7 for flashing cover requirements

PROFILE **BGC Stratum™ and Stratum™ Duo (Vertical Installation)**
DETAIL **Enclosed Balustrade/Parapet Detail Cavity Construction**

DATE **Oct 2019**
SCALE **1:5 @ A4**
DETAIL NO. **SVB-20**

BGC



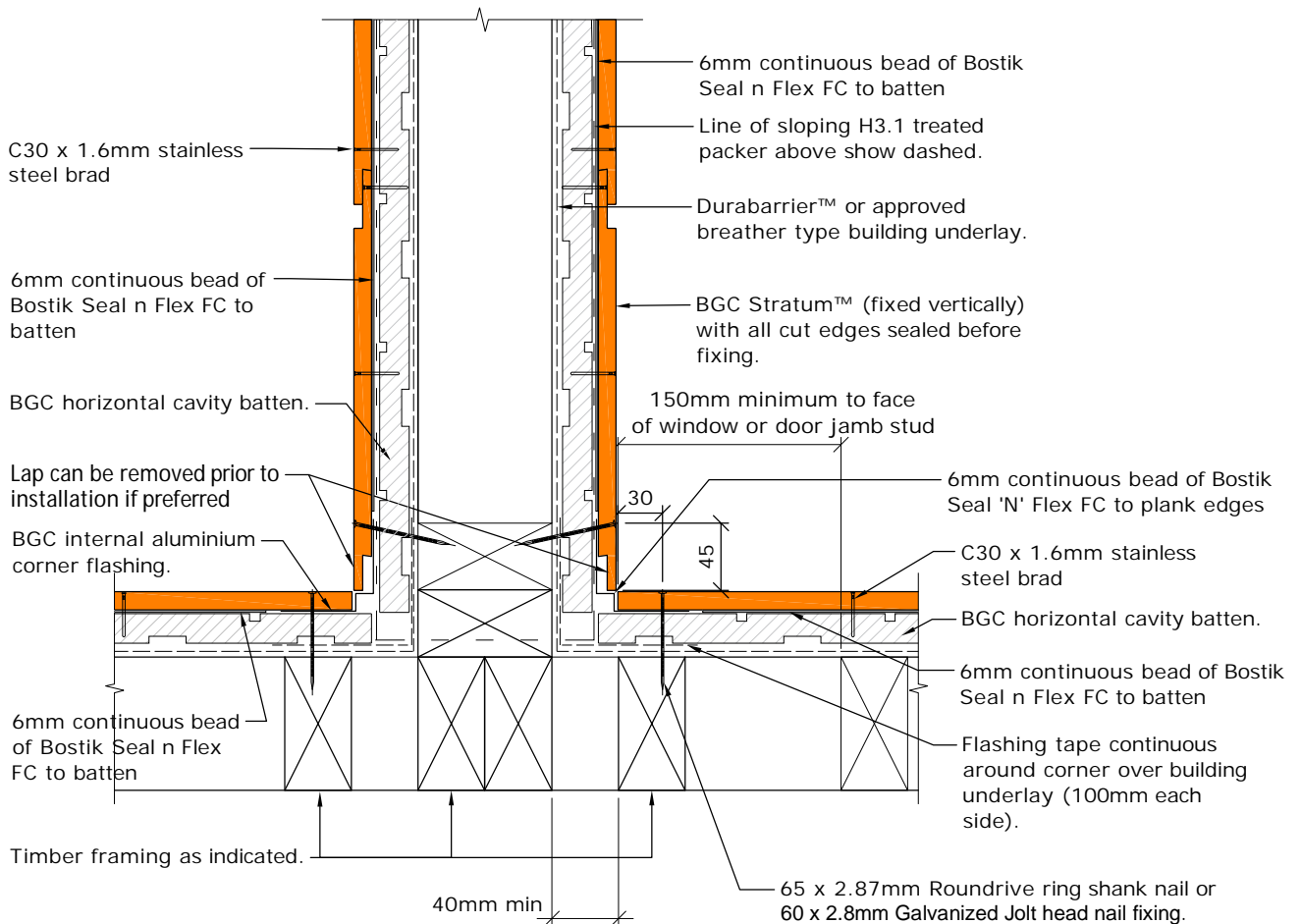
Fibre Cement

Cavity Batten Note:

Refer to cavity batten layout for batten sizes, types, spacing's & fixings

Cladding fixing note:

Refer to cladding fixing layout for all fixing types & spacing's



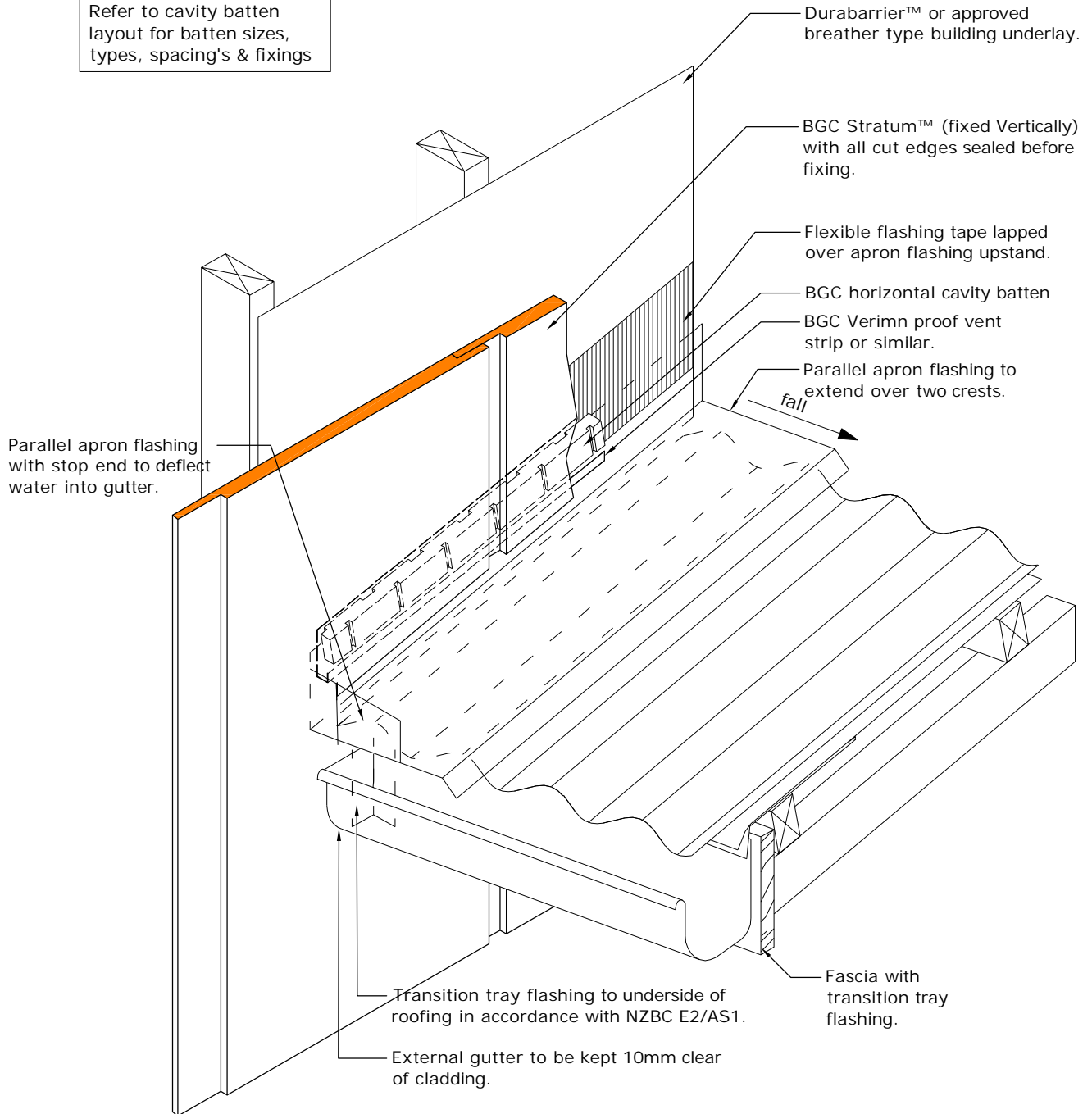
PROFILE **BGC Stratum™ and Stratum™ Duo (Vertical Installation)**
DETAIL **Enclosed Balustrade-Wall Junction Detail Cavity Construction**

DATE Oct 2019
SCALE 1:5 @ A4
DETAIL NO. **SVB-21**



Fibre Cement

Cavity Batten Note:
Refer to cavity batten layout for batten sizes, types, spacing's & fixings



PROFILE **BGC Stratum™ and Stratum™ Duo (Vertical Installation)**

DETAIL **Gutter to Wall Junction Cavity Construction**

DATE **Oct 2019**

SCALE **1:5 @ A4**

DETAIL NO. **SVB-22**

BGC



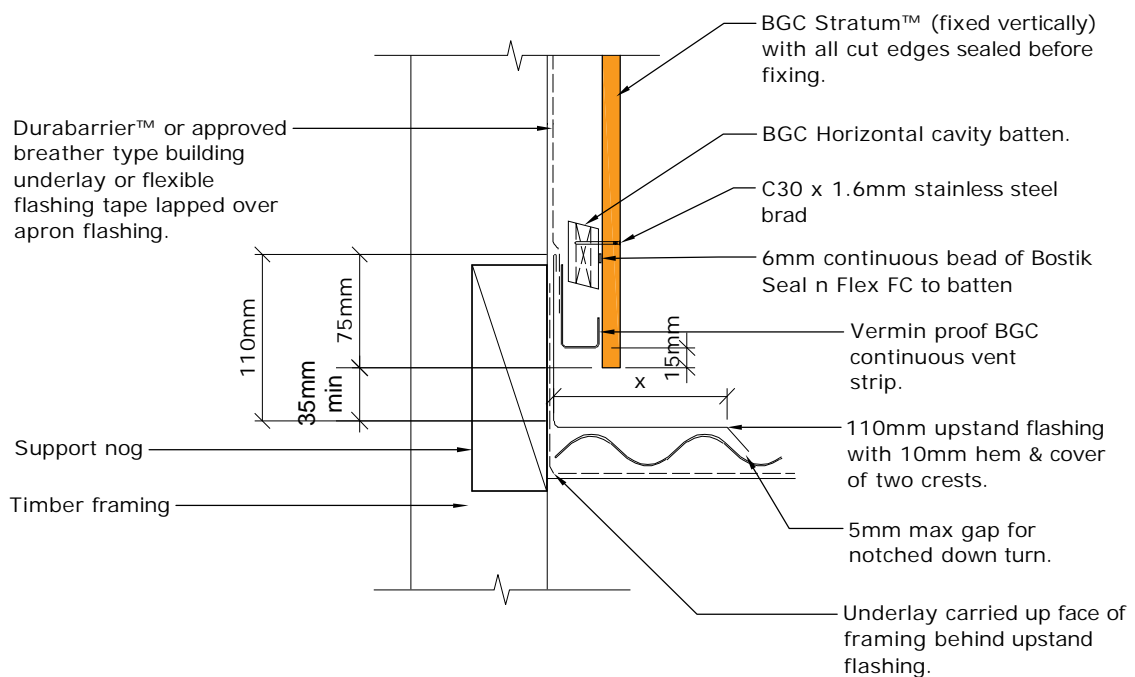
Fibre Cement

Cavity Batten Note:

Refer to cavity batten layout for batten sizes, types, spacing's & fixings

Cladding fixing note:

Refer to cladding fixing layout for all fixing types & spacing's



Note:

x = Refer to NZBC E2 / AS1 Table for flashing cover requirements

PROFILE **BGC Stratum™ and Stratum™ Duo (Vertical Installation)**
DETAIL **Parallel Apron Flashing Detail Cavity Construction**

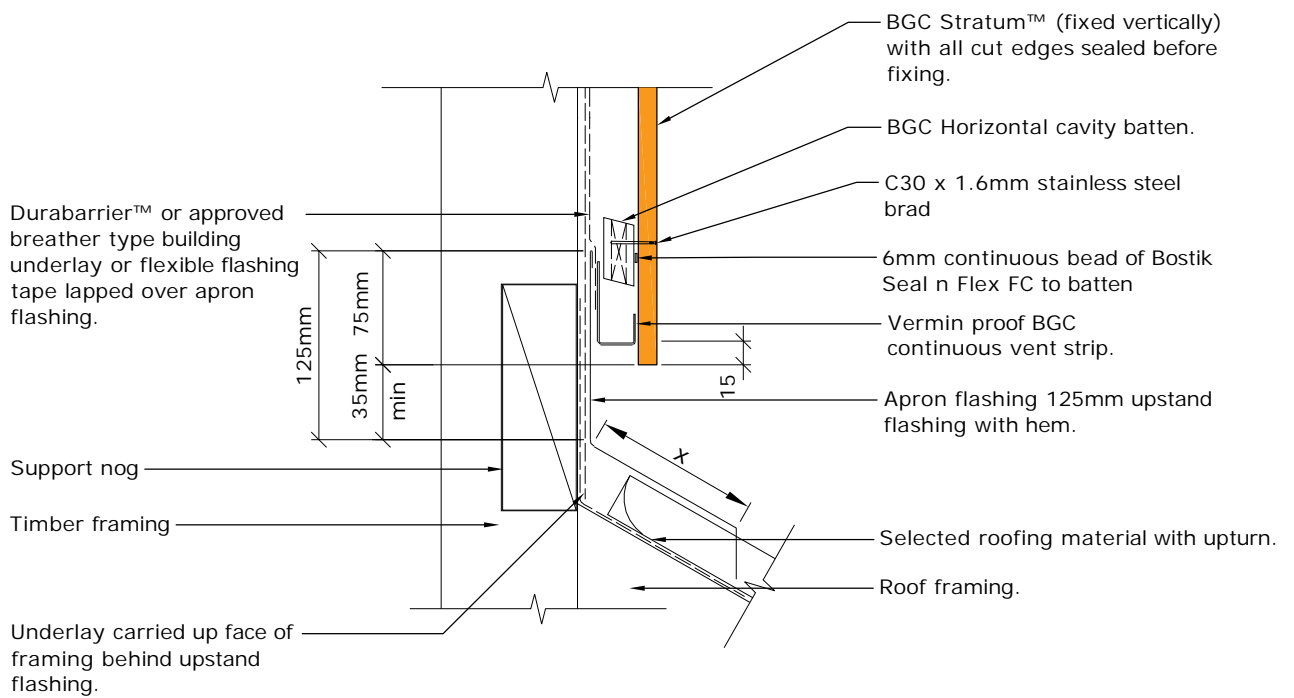
DATE **Oct 2019**
SCALE **1:5 @ A4**
DETAIL NO. **SVB-23**



Fibre Cement

Cavity Batten Note:
Refer to cavity batten layout for batten sizes, types, spacing's & fixings

Cladding fixing note:
Refer to cladding fixing layout for all fixing types & spacing's



Note:
x = Refer to NZBC E2 / AS1 Table for flashing cover requirements

PROFILE **BGC Stratum™ and Stratum™ Duo (Vertical Installation)**
DETAIL **Transverse Apron Flashing Detail Cavity Construction**

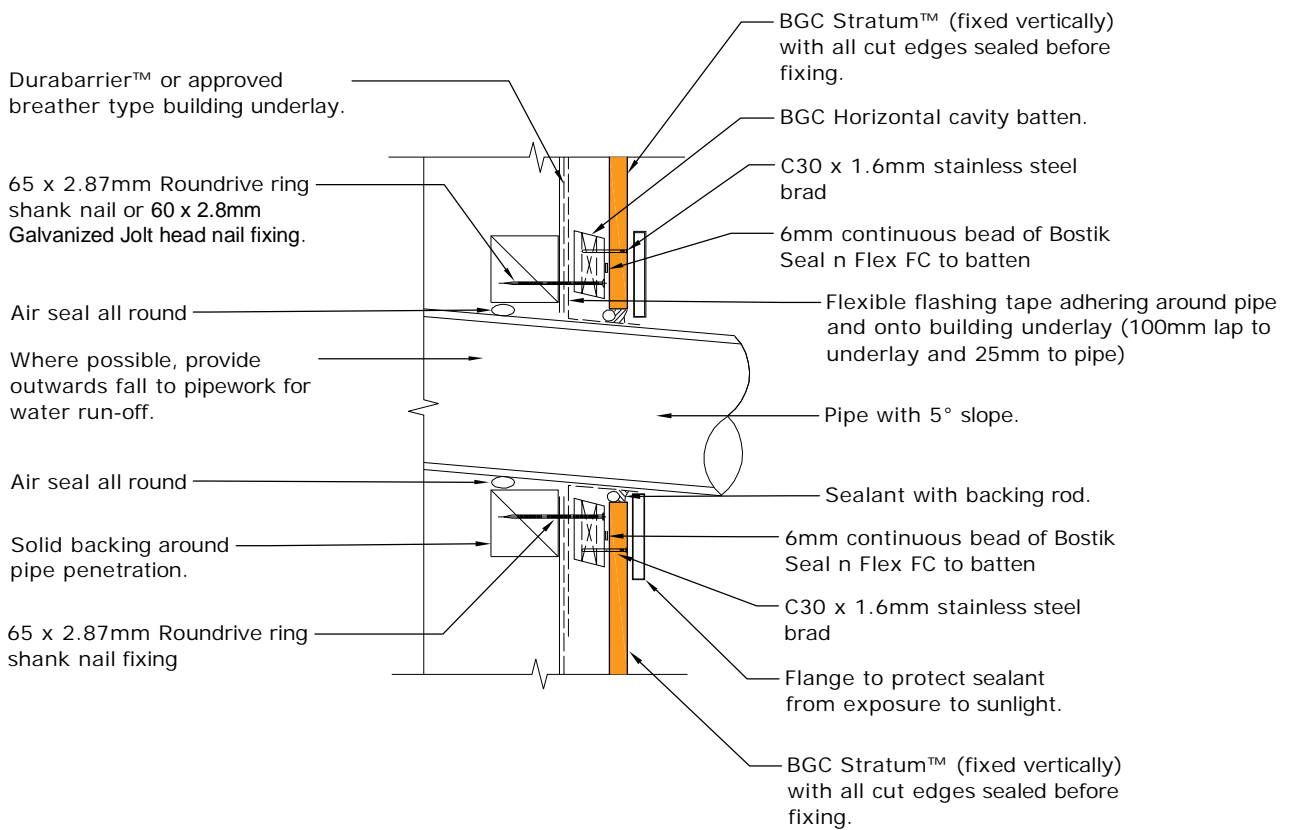
DATE **Oct 2019**
SCALE **1:5 @ A4**
DETAIL NO. **SVB-24**

Cavity Batten Note:

Refer to cavity batten layout for batten sizes, types, spacing's & fixings

Cladding fixing note:

Refer to cladding fixing layout for all fixing types & spacing's



PROFILE **BGC Stratum™ and Stratum™ Duo (Vertical Installation)**

DETAIL **Pipe Penetration Detail Cavity Construction**

DATE Oct 2019

SCALE 1:5 @ A4

DETAIL NO. **SVB-25**