

Ulti Roll Plus

HIGH PERFORMANCE ENVIRONMENT CONTROL DOOR SYSTEM



The Ulti Roll Plus is a premium performance PVC curtain door. Delivering the perfect blend of high speed, crash resistance, easy clean and low maintenance, this door continues to outperform in quality and safety in even the most demanding applications.

Speed Where it Matters

The Ulti Roll Plus has a standard opening speed of up to 2.5m/second. These world-class speeds ensure the door outperforms any approaching traffic, maximising productivity, decreasing energy usage, and minimising the chance of impact damage from forklifts.

Versatile

Due to its compact design and quiet operation the Ulti Roll Plus can be easily incorporated into restricted building clearances. With upgrade options of full stainless-steel framework, it can be applied in wash down/process areas with full confidence.

Ideal for use in

- Food Hygiene Facilities
- Airlocks
- Laboratories
- Warehouses
- Distribution centres
- Manufacturing facilities
- Printing companies
- Logistic companies
- Supermarkets
- Chilled areas
- Heated areas

Crash Resistant

At the heart of the Ulti Roll Plus design is the innovative curtain edge that firmly holds the curtain into the side guides. The Ulti Roll Plus curtain is made of reinforced PVC, with a flexible weighted soft bottom edge. The edge of the curtain has continuous injection moulded profile that allows rapid movement within the self-lubricating polyethylene track. The soft bottom edge enhances safety because there are no metal parts within the curtain design therefore damage is kept to a minimum.

Self Repair

If an accidental impact occurs, the door curtain will automatically release from the retention guides, and for doors up to 3500mm wide, these guides allow the curtain to be easily restored, minimising downtime and service calls.

Multi-Industry Applications

The Ulti Roll Plus outperforms traditional door types in every industry. It can be applied to harsh industrial environments through to high-end laboratory airlocks. The Insulated Curtain option means this door can be used in chilled or heated areas, preventing condensation and retaining temperatures, and the high wind load rating makes it perfect for positive pressure environments.



STANDARD COMPLIANCE

Water Permeability	Class 1	Wind Permeability	Class 4
Wind Loading	Up to Class 4 5000 x 5000 = Class 2	Acoustic Performance	Rw= 17.5dB w/ 7mm insulated curtain
Thermal Resistance	6.02 W/m²k	Safe Openings	Yes
Pressure Differential	Up to 60Pa		

TECHNICAL SPECIFICATIONS

Application	Internal and External
Standard	4000mm H x 3500mm W
Minimum Size	600mm H x 500mm W
Maximum Size	6000mm H x 6000mm W
Opening Speed	Up to 2.5m/second – variable
Closing Speed	0.8m/second – variable
Operating Temperature	-20 to +50°C (<0°C requires insulated curtain + heated frame)

STRUCTURE

Material	Galvanised steel frame structure with aluminium drive drum
Colour	RAL9010

SPACE REQUIREMENTS minimum clearances

Headroom	600mm
Sideroom	175mm (non-motor side), 385mm (motor side)

CURTAIN

Material	Reinforced PVC Curtain
Colour	RAL6018 (standard), RAL1003, RAL5002, RAL7042, RAL9010
Vision Panels	1 row of large clear-vision panels

MOTORISATION

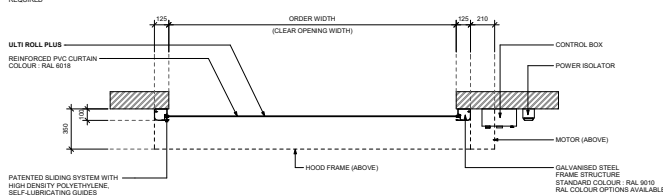
Motor	IP54 rated 1.5kW Heavy Duty 3phase Motor Drive and electromagnetic brake – RH Mounted
Motor Position	RH Side
Control Panel	IP54 rated metal control box with inverter frequency controller
Power Supply	400V; 3phase+N+E; 15Amp Rated adjacent to control box installed to right hand side

SAFETY

Standard Inclusions	Soft PVC Bottom Edge LED Countdown Timer in Control box Reversing sensor system for door curtain obstructions
>2500mm High Doors	2000mm H tower beam safety sensors IP67
<2500mm High Doors	Infrared photocell safety beams IP65
Emergency Egress	Manual hand crank

DIMENSIONS

NOTE:
ORDER DOORS BY CLEAR
SPACING DIMENSIONS
REQUIRED



FLOOR PLAN VIEW

ACTIVATIONS

Manual	Large Heavy-duty Mushroom Head push button Push button and Emergency stop button fitted to control box
--------	---

STANDARD INCLUSIONS

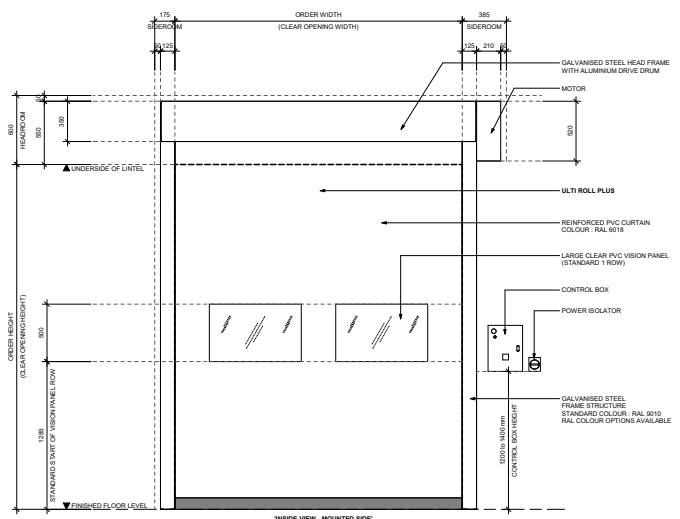
Leg cover, hood cover and motor cover in RAL9010
Patented sliding system with high density polyethylene, self-lubricating guides
Perimeter seal system
Re-feed slot in guides when <3500mm Wide
Encoder control
Performance rated to 1,000,000 cycles

WARRANTY

24 Months or 100,000 Cycles
*Std Warranty terms and conditions apply

OPTIONAL FEATURES

Activations	All Ulti activation options can be applied
Motorisation	IP65 Rated 1.5kw Motor with Stainless Brake (for corrosive applications)
Control Panel	IP54 Corrosion Resistant AISI:304 Stainless Steel
Mounting Options	Left handed power supply, motor, control box Custom control box position Front mount motor reduces sideroom required to 150mm
Low Clearance Options	Compact header unit reduces headroom required to 500mm for doors <3000mm high
Power Supply	Single phase 240V 50Hz control box for door sizes <9m² Heavy duty single phase 240V 50Hz Control box (required for 9m² to 25m² door sizes)
Frame Material	Corrosion Resistant AISI:316 Stainless Steel
Heated Frame	240V door legs and motor heat tracing for freezer applications (additional 10Amp power supply isolator required)
Frame Colours	RAL3000, RAL5002, RAL6018, RAL7042, RAL9005, RAL9010 RAL colour of your choice
Curtain Colours	RAL2008, RAL3000, RAL3004, RAL3020, RAL5005, RAL5011, RAL5013, RAL5015, RAL5021, RAL6005, RAL7038, RAL8017, RAL9005,
Insulated Curtain	3.5mm PVC (4.0W/m²k) – RAL9003, RAL7042 Clear Vision Panels not available 7mm PVC (3.3W/m²k) – RAL1003, RAL2004, RAL3002, RAL5002, RAL7035, RAL9010 Clear Vision Panels not available (additional lead time required)
Vision Panels	2 or 3 rows, custom rows available, Full Vision
Ventilated Panel	1, 2 or 3 rows, custom rows available
Safety	Virtual Vision Extended LED Countdown Timer
Emergency Egress	Counter Balance Manual Release, Zipper Break-Out UPS battery backup (single phase)
Other Features	Custom Printed Curtain Upgrade guides for high wind retention



FRONT ELEVATION VIEW