

# COMMERCIAL SUITE





# FRAMING SOLUTIONS



**FOR OVER 50 YEARS**

# GET TO KNOW FAIRVIEW

## FAIRVIEW'S REPUTATION IS BUILT ON DELIVERING INNOVATIVE AND HIGH END QUALITY SOLUTIONS TO CUSTOMERS WITH SPECIFIC DESIGN NEEDS.

We have a strong history of providing a comprehensive range of products to our customers from mainstream suites to architectural and thermally efficient products and systems. The range of products are tested and designed for New Zealand conditions.

With over 50 years of experience in supplying joinery to the New Zealand construction industry, Fairview is a trusted name in the market. As a family-owned business we supply the industry through a network of independent fabricators who understand the local markets they work in. Being so close to our customers means we proactively seek best practice and work together with industry partners to maintain the highest standard of service and products.

We have the added advantage of having a market-leading, fully in-house research and development operation, design and technical support team. Taking a highly collaborative approach, we'll provide you with full specifications and technical information and installation details when required, so you can deliver the best results for your clients every time.

Fairview covers key aspects of the supply chain from design and testing to the supply of aluminium extrusion, glass and hardware products to deliver a complete system to the market.



### PROUD TO BE ASSOCIATED WITH:



# SPECIFICATION SUPPORT & INFORMATION

## GENERAL AND TECHNICAL ENQUIRIES:

Fairview's specification team have a wide range of experience and are available to answer any questions you may have, we are just a phone call or email away.

Phone: +64 9 574 2900

Email: [archteam@fmi.co.nz](mailto:archteam@fmi.co.nz)

[www.fairviewwindows.co.nz/specifiers](http://www.fairviewwindows.co.nz/specifiers)

E2/ASI install details available as standard. For site specific rebate or flush sill details, please contact our Architectural Advisors.

## FAIRVIEW FABRICATORS

Fairview have an extensive network of Fairview fabricators across New Zealand, who are passionate about design and are experts in their field. Contact them for a free quote and to discuss your next project.

[www.fairviewwindows.co.nz/manufacturers/](http://www.fairviewwindows.co.nz/manufacturers/)

## FAIRVIEW PRODUCT DRAWINGS AND TECHNICAL INFORMATION ARE CONVENIENTLY LOCATED ON THE FOLLOWING PLATFORMS:

### PRODUCTSPEC<sup>®</sup>

architecture, building & landscape products

Productspec - is an extensive library of New Zealand building products including product technical drawings, BIM and CAD files.

[productspec.co.nz](http://productspec.co.nz)

### SMARTSPEC<sup>™</sup>

Smartspec - is a intuitive specification writing tool.

[www.smartspec.co.nz](http://www.smartspec.co.nz)

### masterspec partner

Masterspec - is a specifications tool to increase construction workflow and connectivity.

[masterspec.co.nz](http://masterspec.co.nz)



EnviroSpec - is an independent consultancy providing an online platform where architects, product suppliers and homeowners can compare products in terms of their environmental performance.

[www.envirospec.nz](http://www.envirospec.nz)



### INSTANT ENERGY EFFICIENCY REPORTS



Fairview windows and doors can provide immediate BRANZ-verified R-values on every unit, on the fly while quoting. Personalised reports show exactly what R-value each window and door can achieve – and also the combined value across the whole house. Comparisons across products are also possible.

### PERFORMANCE AND TEST STANDARDS

Tested to specific design criteria where project requirements have demanded higher levels of performance.

### A MORE ENERGY EFFICIENT HOME R-values and thermal ratings

While it is tricky to quantify exactly how much money can be saved as part of a total window system quality, aluminium frames with insulated glazing can definitely help boost the energy efficiency of your home. When combined with a high-performance glass solution, like low-e, the benefits are even greater.

The thermal efficiency of windows and doors is measured by R-value. This is the thermal resistance of the entire window system (including glass, thermal spacer and joinery), not the glass on its own.

This gives you a more complete view of the performance of your Fairview window and door solution. The higher the R-value, the less heat is lost through the system, and the better the insulation will be.

Your Fairview fabricator can show you exactly what R-value rating each of your windows and doors can achieve, as well as the combined value of the house lot of joinery. This provides an easy way to compare multiple product combinations (glass, thermal spacer and joinery), on the same report.

With every Fairview window system quoted, we can provide a BRANZ-verified WEERS\* rating. So it's easy to make the best choice.

Talk to us for more information about our WEERS ratings and how we can help.

### WARRANTIES



15 year powdercoating warranty in most residential environments. Additional and extended warranties are available for commercial applications.

### SUSTAINABILITY STATEMENT:

At Fairview we are committed to sustainability: environmental, social and economic.

- We are committed to best practice production policies to protect our environment.
- 100% of our aluminium billet is sourced from a smelter using a renewable hydropower.
- Aluminium is a 100% recyclable product and is the most recyclable of all materials.
- We support a diverse workforce and strive for continuous improvement.
- We support local jobs and economic growth within our communities.

\* Window Energy Efficiency Rating Systems



# CONTENTS

## FAIRVIEW 50

14

75MM  
SUITE

15

100MM  
SUITE

16

125MM  
SUITE

18

150MM  
SUITE

19

## FAIRVIEW 65

20

100MM  
CURTAIN  
WALL  
SUITE

21

150MM  
CURTAIN  
WALL  
SUITE

23

## ACCESSORIES & FINISHES

25

FINISHES  
& COLOUR

26

POWDER-  
COATING

27

GLASS  
OPTIONS

28



A photograph of a modern commercial building. The building features a central glass atrium with a staircase, surrounded by multi-story wings with a mix of light-colored panels and dark window frames. A courtyard in the foreground contains a young tree and some landscaping. The sky is blue with light clouds. A red horizontal bar is positioned across the middle of the image, with the text 'COMMERCIAL SUITE' written vertically in white over it.

# COMMERCIAL SUITE



## OVERVIEW.

## FAIRVIEW 50/65

### FAIRVIEW 50 COMMERCIAL SUITE

Fairview 50 is a diverse and highly versatile range of suites, specifically designed to cater for New Zealand's unique building and construction practices. Ideal for educational, industrial, office and retail projects.

The development of three base systems, 100mm, 125mm and 150mm ensures ease of fabrication and installation. And provides multiple variations so you can achieve your projects specific performance and aesthetic requirements.

### FAIRVIEW 65 COMMERCIAL SUITE

Our market-leading fully unitised curtain wall systems, 150mm ensures ease of fabrication and installation. Fairview 65 provides flexible glazing variations to make sure you can meet your project's requirements. Ideal for apartment, industrial, institutional, office and recreational projects.

### COMMERCIAL WINDOWS AND DOORS

Our commercial windows and doors are designed to complement all our commercial facade and curtain wall offerings.

### SPECIFIC DESIGN CHARACTERISTICS/AESTHETICS

If your project requires sun louvres, sun protection, controlled ventilation and/or automatic access (automatic doors) please contact our Architectural Advisors.





# SETTING US APART



## END DAMS AND STEEL STRENGTHENING.

### FAIRVIEW 50/65

---

#### END DAMS

End dams have been specifically designed for this range of product. They use 90% less sealant than other systems available, increasing the speed of fabrication and reducing the cost of installation. These specialist end dams, available for both single and double glazing, form junctions that have significantly increased water resistance compared with other similar solutions.

Transom end dams fill the void in the glazing channel of the mullion, where every transom and mullion junction occurs. Without end dams, water is allowed to run down the mullion and potentially track back into the building at these transom mullion junctions.

With these market-leading and specifically designed end dams from Fairview, fabrication is now more efficient and the finished product has even greater performance.

#### STEEL STRENGTHENING

Galvanised structural inserts can be incorporated into mullions as required to provide additional strength. These options give the respective suite another level of performance, flexibility and cost competitiveness while ensuring the architect and/or specifier can achieve their aspirations.

#### SPLIT FINNED MULLION AND BOXED BACK SPLIT MULLION

The split mullion allows the glazing of long strips of windows in a unitised fashion. This type of fabrication allows for increased factory glazing, which can result in a more efficient and cost-effective installation.

When incorporated with seismic channels this provides the ability to expand and contract for both seismic and thermal movement.

#### UNSTIFFENED MULLION



#### STIFFENED MULLION



#### POCKET GLAZED TRANSOM END DAM



*Image not to scale.*

# SEISMIC CHANNELS AND SILL TRAYS.

## SEISMIC CHANNELS

Seismic channels are commonly built-in to the installation of commercial facades in New Zealand. While suites in all their variations can be installed without the use of them, Fairview recognises some construction methods and some environmental conditions call for them. A two-piece, suite specific seismic channel has been developed for this purpose.

## SILL TRAYS

Sill trays are an integral part of all suites. With this in mind, we have developed suite specific sill trays.

The first is a standard sill tray for use in 'direct fix' installation situations. The second is a seismic sill tray to be used in conjunction with the suite specific two-piece seismic channel.

## CURTAIN WALL ANCHORS

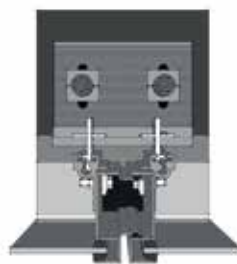
There are a range of methods for connecting curtain wall systems to buildings. Often projects require specifically designed brackets to accommodate the variations in structural systems used by engineers and the diverse detailing of architects.

Fairview has approached the 'anchoring' aspect of the curtain wall by designing a structural alloy anchor bracket that is suitable for use with steel and concrete structures and provides three-dimension adjustment. However, even with this specifically designed anchor bracket, we will design bespoke anchor brackets to suit individual projects as required.

Fixed glazed window



Curtain wall anchor (plan)



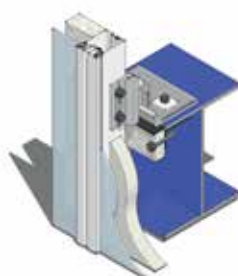
Curtain wall anchor (section)



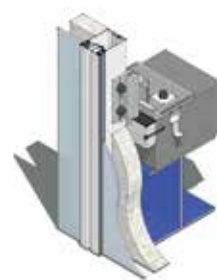
Fixed glazed window alternative



Steel installation



Concrete installation







# FAIRVIEW 50

**FAIRVIEW 50**  
 75MM SUITE - CENTRE GLAZE  
 CAPTIVE - SINGLE GLAZE



**IDEAL APPLICATIONS**

Suitable for low level commercial or retail and internal partitioning systems.

Ideal for:

- Commercial offices
- Factory offices
- Interior fit-outs
- Retail

Provides a modern and minimal aesthetic.

**FEATURES AND BENEFITS**

- Designed to meet AS/NZS 4284.
- Integrated end dams for improved glazing drainage.
- Versatile modular installation methodology.
- Glazing capacity of up to 14mm.

**75MM SUITE - CENTRE GLAZED**

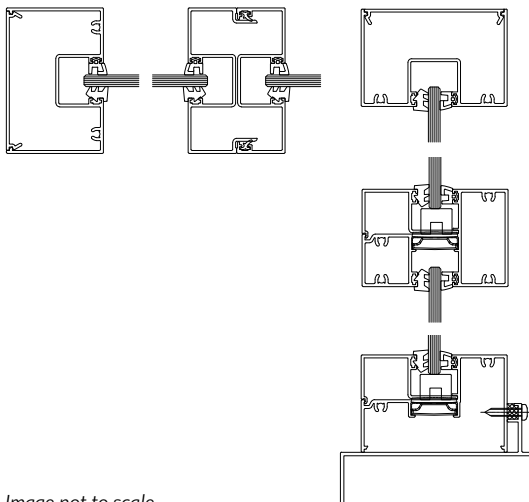
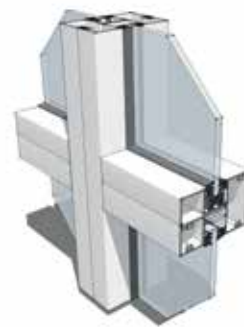


Image not to scale.

**OUTSIDE**



Drawings are of single glazed - captive.  
 Please note: drawing(s) are not to scale.



## FAIRVIEW 50

### 100MM SUITE – CENTRE GLAZE

#### CAPTIVE – SINGLE AND DOUBLE GLAZE

#### IDEAL APPLICATIONS

For applications up to three storeys.  
Ideal for:

- Factory offices
- Commercial offices
- Cafes and restaurants

Provides a modern aesthetic.

#### FEATURES AND BENEFITS

- Tested to AS/NZS 4284.
- Integrated end dams for improved glazing drainage.
- Versatile modular installation methodology.
- Glazing capacity of 4mm single glazed up to 28mm double glazed.
- Combine Fairview 50 across captive and structural facades.
- Can accommodate steel strengthening if and where required.
- Two-piece seismic channel and seismic sill tray available.

F50

#### 100MM SUITE – CENTRE GLAZE

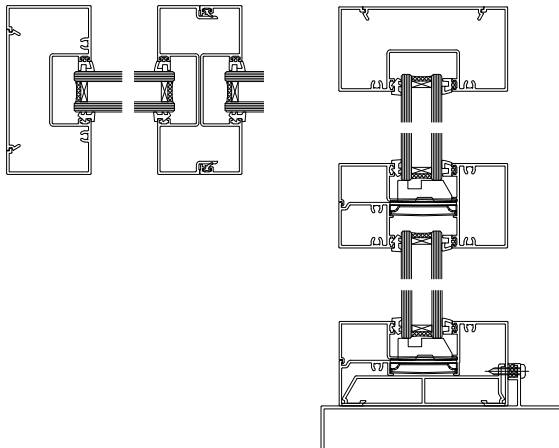
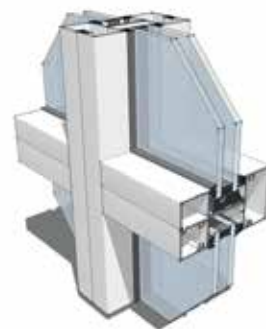


Image not to scale.

#### OUTSIDE



Drawings are of double glazed - captive.  
Please note: drawing(s) are not to scale.

**FAIRVIEW 50**  
 100MM SUITE – FRONT GLAZE  
 CAPTIVE AND 2 SIDED  
 STRUCTURAL – SINGLE AND  
 DOUBLE GLAZE



**IDEAL APPLICATIONS**

For applications up to three storeys.  
 Ideal for:

- Commercial offices
- Factory offices
- Cafes and restaurants
- Schools

Provides a flat modern aesthetic.

**FEATURES AND BENEFITS**

- Integrated end dams for improved glazing drainage.
- Versatile modular installation methodology.
- Glazing capacity of 4mm single glazed up to 28mm double glazed.
- Mix Fairview 50 across front and centre, single and double glazed facades.
- 2 sided structural glaze.
- Blend Fairview 50 across captive and structural facades.
- Can accommodate steel strengthening if and where required.
- Two-piece seismic channel and seismic sill tray available.

**100MM SUITE – FRONT GLAZE**

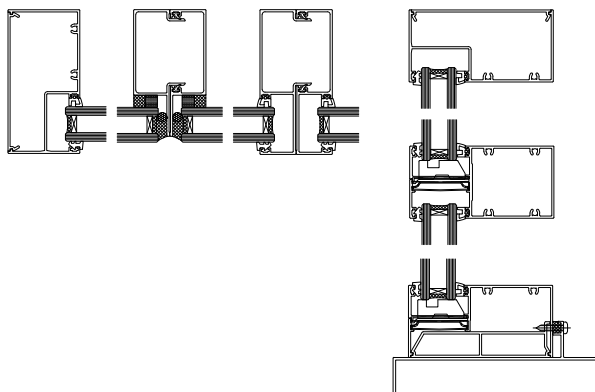


Image not to scale.

**OUTSIDE**



Drawings are of double glazed – captive.  
 Please note: drawing(s) are not to scale.  
 Structural glaze mullion only, no structural transom.



## FAIRVIEW 50

I25MM SUITE - FRONT GLAZE  
CAPTIVE AND 2 SIDED  
STRUCTURAL - SINGLE AND  
DOUBLE GLAZE

### IDEAL APPLICATIONS

For applications up to three storeys.  
Ideal for:

- Commercial offices
- Factory offices
- Retail
- Schools

Provides a flat modern external aesthetic.

### FEATURES AND BENEFITS

- Tested to AS/NZS 4284.
- Integrated end dams for improved glazing drainage.
- Versatile modular installation methodology.
- Glazing capacity of 4mm single glazed up to 28mm double glazed.
- Combine Fairview 50 across the front, single and double glazed facades.
- Integrate Fairview 50 across captive, and 2 sided structural facades.
- Can accommodate steel strengthening if and where required.
- Two-piece seismic channel and seismic sill tray available.

F50

### I25MM SUITE - FRONT GLAZE

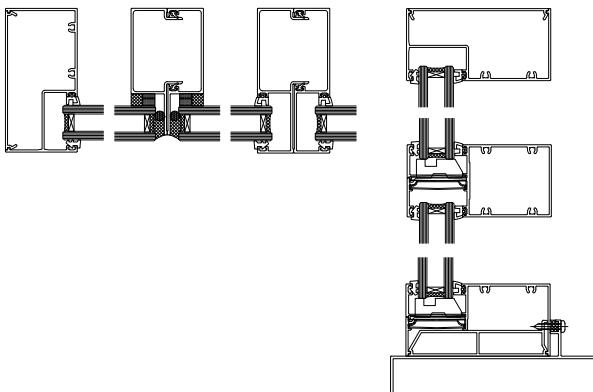


Image not to scale.

### OUTSIDE



Drawings are of double glazed -2 sided structural.  
Please note: drawing(s) are not to scale.  
Structural glaze mullion only, no structural transom.

**FAIRVIEW 50**  
 150MM SUITE – FRONT GLAZE  
 CAPTIVE AND 2 SIDED  
 STRUCTURAL – SINGLE AND  
 DOUBLE GLAZE



**IDEAL APPLICATIONS**

For applications up to four storeys.  
 Ideal for:

- Commercial offices
- Factory offices

Provides a flat modern external aesthetic.

**FEATURES AND BENEFITS**

- Tested to AS/NZS 4284.
- Integrated end dams for improved glazing drainage.
- Versatile modular installation methodology.
- Glazing capacity of 4mm single glazed up to 28mm double glazed.
- Combine Fairview 50 across front and centre, single and double glazed facades.
- Integrate Fairview 50 across captive and structural facades.
- Can accommodate steel strengthening if and where required.
- Two-piece seismic channel and seismic sill tray available.

**150MM SUITE – FRONT GLAZE**

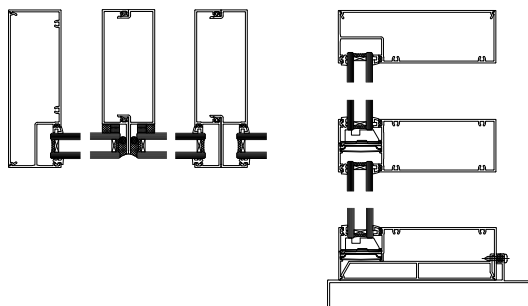
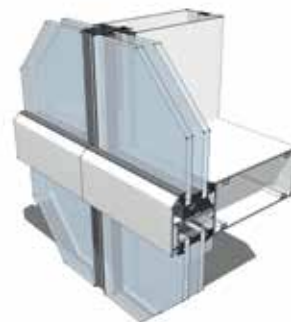


Image not to scale.

**OUTSIDE**



Drawings are of double glazed – 2 sided structural.  
 Please note: drawing(s) are not to scale.

# FAIRVIEW 65





**FAIRVIEW 65**  
 100MM CURTAIN WALL SUITE  
 CAPTIVE - SINGLE AND  
 DOUBLE GLAZE



**IDEAL APPLICATIONS**

- Industrial parks
- Institutional facilities
- Office parks
- Office towers
- Recreational facilities

Provides a minimal and flat external aesthetic.

**FEATURES AND BENEFITS**

- Tested to AS/NZS 4284.
- The fully unitised system provides for increased quality assurance processes providing a more cost-effective and efficient installation phase.
- Integrated end dams for improved glazing drainage.
- Increased seismic performance.

**100MM CURTAIN WALL SUITE - CAPTIVE**

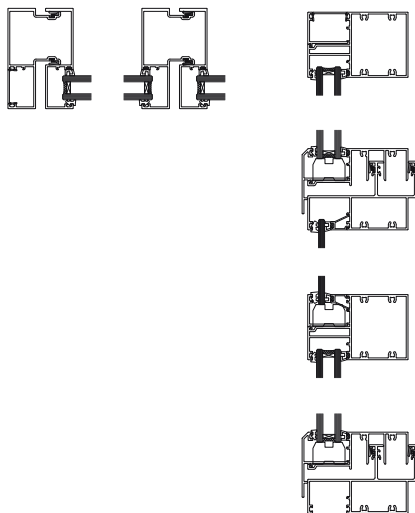


Image not to scale.

**4 SIDED CAPTIVE**



Drawings are of double glazed - captive.  
 Please note: drawing(s) are not to scale.

**FAIRVIEW 65**  
 100MM CURTAIN WALL SUITE  
 2 AND 4 SIDED STRUCTURAL –  
 SINGLE AND DOUBLE GLAZE

**IDEAL APPLICATIONS**

- Industrial parks
- Institutional facilities
- Office parks
- Office towers
- Recreational facilities

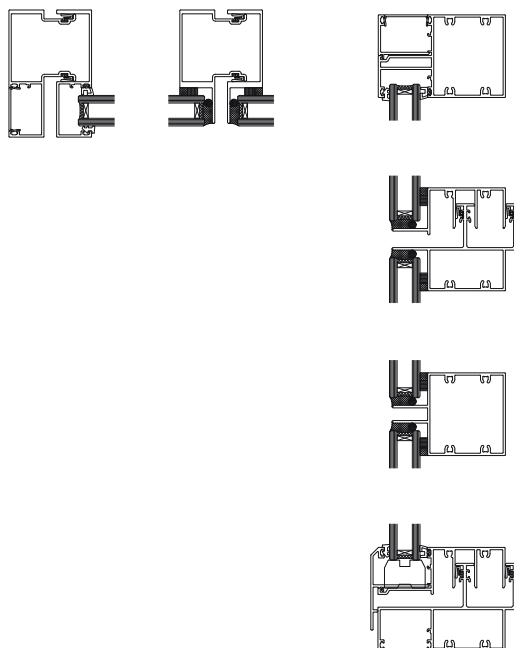
Provides a minimal and flat external aesthetic.

**FEATURES AND BENEFITS**

- Tested to AS/NZS 4284.
- The fully unitised system provides for increased quality assurance processes providing a more cost-effective and efficient installation phase.
- Integrated end dams for improved glazing drainage.
- Increased seismic performance.
- Three-dimensional dead load brackets for improved installation processes.
- Glazing capacity of 4mm single glazed up to 28mm double glazed.
- Structural sash is available.

F65

**100MM CURTAIN WALL SUITE – STRUCTURAL**



**2 SIDED STRUCTURAL A**

**2 SIDED STRUCTURAL B**



**4 SIDED STRUCTURAL**



*Drawings are of double glazed.  
 Please note: drawing(s) are not to scale.*

*Image not to scale.*

**FAIRVIEW 65**  
 150MM CURTAIN WALL SUITE  
 CAPTIVE - SINGLE AND  
 DOUBLE GLAZE



**IDEAL APPLICATIONS**

- Industrial parks
- Institutional facilities
- Office parks
- Office towers
- Recreational facilities

Provides a minimal and flat external aesthetic.

**FEATURES AND BENEFITS**

- Tested to AS/NZS 4284.
- The fully unitised system provides for increased quality assurance processes providing a more cost-effective and efficient installation phase.
- Integrated end dams for improved glazing drainage.
- Increased seismic performance.

**150MM CURTAIN WALL SUITE - CAPTIVE**

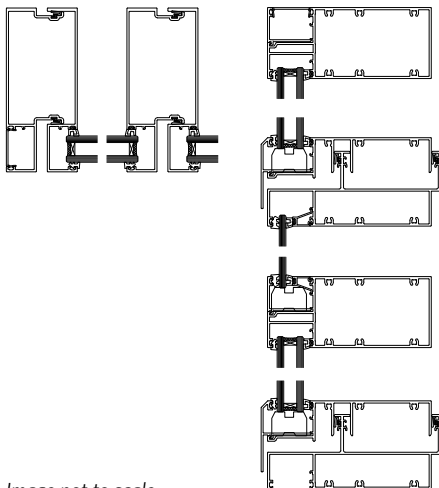


Image not to scale.

**4 SIDED CAPTIVE**



Drawings are of double glazed - captive.  
 Please note: drawing(s) are not to scale.



**FAIRVIEW 65**  
 150MM CURTAIN WALL SUITE  
 2 AND 4 SIDED STRUCTURAL –  
 SINGLE AND DOUBLE GLAZE

**IDEAL APPLICATIONS**

- Industrial parks
- Institutional facilities
- Office parks
- Office towers
- Recreational facilities

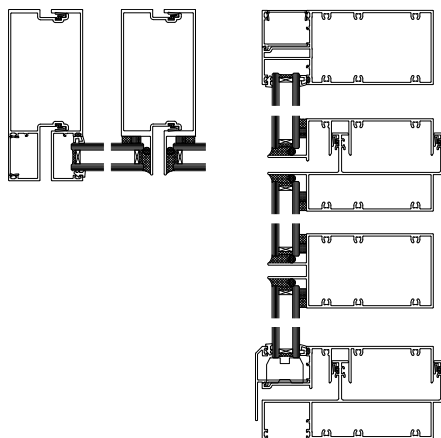
Provides a minimal and flat external aesthetic.

**FEATURES AND BENEFITS**

- Tested to AS/NZS 4284.
- The fully unitised system provides for increased quality assurance processes providing a more cost-effective and efficient installation phase.
- Integrated end dams for improved glazing drainage.
- Increased seismic performance.
- Three dimensional dead load brackets for improved installation processes.
- Glazing capacity of 4mm single glazed up to 28mm double glazed.
- Structural sash is available.

F65

**150MM CURTAIN WALL SUITE – STRUCTURAL**



**2 SIDED STRUCTURAL A**

**2 SIDED STRUCTURAL B**



**4 SIDED STRUCTURAL**



*Drawings are of double glazed.  
 Please note: drawing(s) are not to scale.*

*Image not to scale.*



# ACCESSORIES & FINISHES

## STYLISH, DURABLE & TOUGH.

- Huge range of standard and non-standard powdercoat colours available.
- Anodising provides a matt metallic finish. Standard colour options are silver, black and bronze, 20 and 25 micron thickness, and are subject to a site-specific warranty.

### POWDERCOAT FINISHES

- Powdercoating is one of the most durable colour-coatings available. It's a baked on coating that is available in a wide range of colours.
- With 36 standard colours to choose from, (and 300+ colour range available) it is a popular choice.
- We powdercoat our windows and doors using our own facilities, accredited to WGANZ Enduro Colour Powdercoating Quality Standards, so we know they are built to last.
- Powdercoat products come with a 15-year guarantee\*

AkzoNobel – Partnering up with world-class business to ensure we deliver outstanding quality and trusted outcomes.

### ANODISED FINISHES

Anodising uses an anodic oxide coating to bring out unique colours within the metal of the frame. The result is a stylish, matt metallic finish that's durable and tough wearing.

## FINISHES & COLOURS

### INTERPON BRIGHTS

- Perfect for a bold entrance with dramatic visual effect, the Brights range offers a vibrant selection of UV stable colours. Ultra-durable and weather resistant this premium powdercoating range by Interpon is backed by a global 10/15 year warranty\*.
- Suitable for both residential and commercial applications.

### ENVIRONMENTAL IMPACT

The environmental impact of our products is important to our customers, and it's important to us. That's why we take care to ensure our production processes are as sustainable as possible. Our powdercoatings don't contain Volatile Organic Compounds (VOCs), they are recyclable during the application, and they've been produced using a sustainable manufacturing process. They have a lower ecological footprint than most other coating alternatives. Our finishings are so durable, the need for replacement coatings is reduced.

\* See page 27.



## BUILT TO LAST.

Interpon D is a warranty-grade powdercoatings range engineered specifically for architectural aluminium applications.




This range includes several coating technologies designed to meet the various AAMA standards requirements.

## POWDERCOATING

### HOW TO SPECIFY INTERPON POWDERCOATINGS

Once you have chosen the interpon powdercoating suitable for your project, it's important to use the correct product. This is simply done in 3 easy steps.

1. Nominate the interpon product e.g. DI0000.
2. Nominate the colour, finish and product code e.g. Silver Cornet Satin GY184C.
3. Add to your specification detail.

	INTERPON D2525 FUTURA	INTERPON D1010 PREMIUM COMMERCIAL	INTERPON D1010 PREMIUM RESIDENTIAL
			
WARRANTY LEVEL	Gold	Silver	Silver
FILM INTEGRITY WARRANTY	25 years	15 years	15 years
COLOUR RETENTION WARRANTY	15 years	10 years	15 years
WAGNZ	✓	✓	✓
AAM 2603		✓	✓
AAM 2604	✓		
NEW ZEALAND BUILDING REGULATIONS	A	A	B
COATING TECHNOLOGY	TGIC-Free Ultra Durable Polyester	TGIC-Free Durable Polyester	TGIC-Free Durable Polyester
ENVIRONMENTAL CREDENTIALS	Eligible for Green Star points	Eligible for Green Star points	Eligible for Green Star points

A = Suitable for all classes. Any building, any height. All NZ3604 Zones B, C & D.

B = Suitable only for Clause A1 of the New Zealand Building Regulations, domestic residential buildings of classified uses, class 2.0 housing and Class 7.0 outbuildings. Up to 3 levels in height. All NZ3604 Zones B, C & D.

## WINDOWS AREN'T JUST PART OF YOUR PROJECT'S FRAMEWORK.

- Fairview are pioneers in total window system supply, adding an extensive selection of glass options to our aluminium frame offerings in 2009. Our combined expertise delivers optimum solutions through our national fabricator network.

Windows are not just part of a home's framework. They can add light and life, warmth and beauty. That's why choosing the right glass is so important.

The right glazing options for a home and the costs involved will depend on a number of things. Factors like lifestyle, climate, noise levels and where your windows are positioned need to be considered.

## GLASS

Fairview window and door solutions work to make a home more comfortable. When you combine our exceptional windows and doors with the optimum insulated glass selection, you'll have a living environment that feels 'just right', all year round.

For glass options visit [www.fmiglass.co.nz](http://www.fmiglass.co.nz)

fmi  
GLASS

GLASS

## GET TO KNOW YOUR GLASS

- **LOW-EMISSIVITY (LOW-E) GLASS**  
Glass with an almost invisible coating contained on the inside pane of an insulated glass unit (IGU). This coating lets the sun's light and energy into a building and reflects heat indoors, forming a shield against the cold. In warmer climates, low-e glass can be used to keep the heat out.
- **U-VALUE**  
The measure of air-to-air heat transfer through glass and the difference between the indoor and outdoor temperatures. The lower the U-value, the lower the heat transfer and the better the insulation.
- **R-VALUE**  
The thermal resistance of the total window system (including glass, spacer and joinery type). The higher the R-value, the less heat that is lost through the system and the better the insulation.
- **SHADING CO-EFFICIENT**  
The ratio of total solar heat gain through a particular glass type compared to the total heat gain through 3mm clear glass. The lower the shading co-efficient, the more the glass restricts the transfer of solar heat.
- **VISIBLE LIGHT TRANSMISSION**  
The percentage of visible light transmitted through the glass. The higher the VLT, the more natural light enters the room.
- **ARGON**  
A noble gas used inside a double or triple glazed unit. It restricts the transfer of heat and provides greater insulation. It is often used with Solace Low-E glass.

### INSULATED GLASS UNIT (IGU)

Windows with an IGU can help you halve your heat loss compared to single-glazed windows of the same size and shape.\*

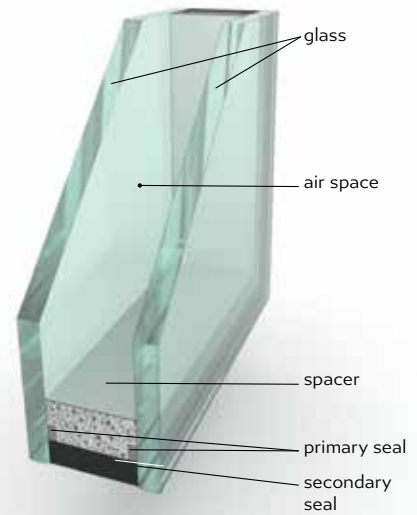
IGU's can add value to your project, using the right glass combination to reduce noise, glare, fading of furnishings and increasing your security and comfort.

An IGU is made of two or more glass panes with sealed air spaces around the perimeter. The sealed air spaces can be filled with an insulating gas like argon.

This allows almost as much sunlight to filter through compared to a single-glazed window, but the heat will be held in more effectively.

Spacers separate the glass panes to reduce condensation and can create a 'warmer edge' to your windows and doors.

INSULATED GLASS UNIT

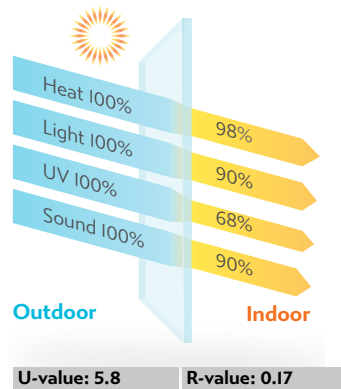




# THERE'S A LOT MORE TO GLASS THAN MOST PEOPLE THINK.

## CLEAR GLASS

Single glazed 4mm clear



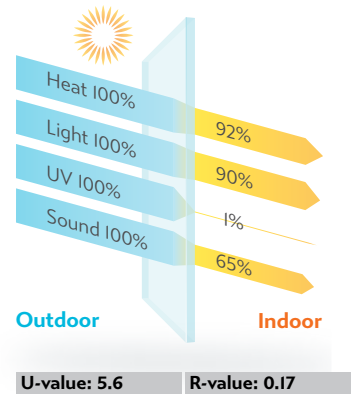
## TINTED GREY & CLEAR GLASS\*

5mm tinted grey, 12mm air, 4mm clear glass



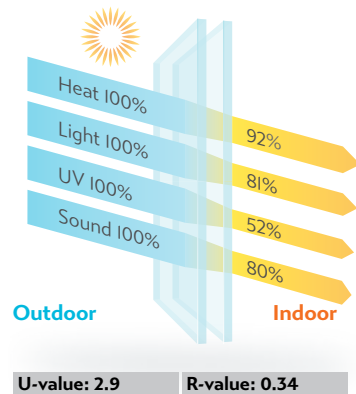
## LAMINATED GLASS

Single glazed 6.38mm clear laminated



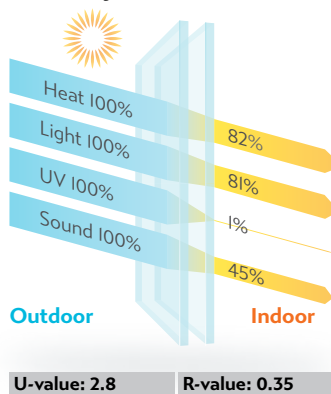
## CLEAR GLASS & CLEAR GLASS

4mm clear glass, 12mm air, 4mm clear glass



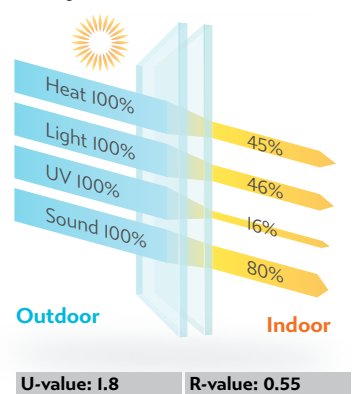
## CLEAR LAMINATED & CLEAR GLASS

6.83mm clear laminated glass, 12mm air, 4mm clear glass



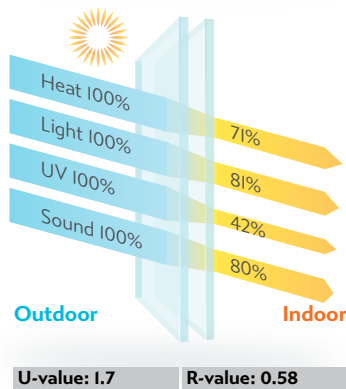
## TINTED GREY & LOW-E GLASS\*

5mm tinted grey, 12mm air, 4mm low-e glass



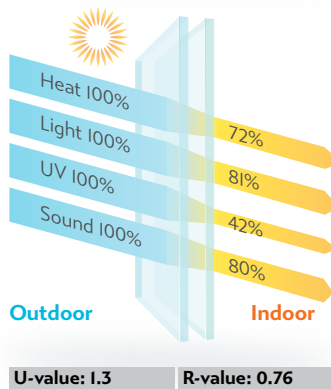
## CLEAR & LOW-E GLASS

4mm clear glass, 12mm air, 4mm low-e glass



## CLEAR, ARGON & LOW E GLASS

4mm clear glass, 12mm argon, low-e glass



\* The use of tinted or reflective glass leads to higher absorption of solar radiant heat, this results in higher thermal stress which may lead to fracturing of the glass pane. Heat strengthened or toughened glass may be required. Talk to your Fairview fabricator for more information.

# MAKE THE CHOICE EVEN EASIER.

## GLASS

To make the choice even easier, we've developed this handy checklist – simply compare the benefits to select the perfect glass solution for your project.

WISH LIST	SOLACE LOW-E GLASS	TOUGHENED GLASS	LAMINATED SAFETY GLASS	LAMINATED ACOUSTIC GLASS	TINTED GLASS	PATTERNED / OPAQUE GLASS
A WARMER BUILDING	■					
A COOLER BUILDER IN SUMMER	■				■	
MINIMISE CONDENSATION	■					
LESS NOISE			■	■		
REDUCE FADING OF FURNISHINGS & ARTWORK	■		■	■	■	
REDUCE GLARE					■	
SAFETY		■	■			
MORE PRIVACY					■*	■

\* Tinted windows only provide privacy during the day, not at night when internal lights are switched on.



### SOLACE LOW-E

Solace Low emissivity (low-e) glass has an almost invisible coating that covers the inside pane of glass.

This coating lets the sun's light and energy into a building and reflects the heat indoors, creating a shield against the cold. Add an insulating gas like argon, and it can keep in even more warmth.

Solace Low-e cuts down heat loss through windows by about 20-30% compared to insulated glass alone.\*\*

How does this help? One benefit is that you can live closer to windows and doors, maximising usable space.

By changing the location of the low-e coating for warmer climates, low-e glass can be used to keep the heat out too.

\*\* EECA Energywise website. Double glazing.

### SAFETY GLASS

Safety glass has extra features that make it less likely to break, or help it to break in a less dangerous way.

There are two types of safety glass to choose from: toughened and laminated. You'll want to think about where and how the glass is being used before you decide which type is best.

### TOUGHENED GLASS

Toughened safety glass has undergone heat treatment to make it stronger overall. If this glass does break, it breaks into small pieces, reducing the risk of injury.

### LAMINATED GLASS

Laminated safety glass is made by applying a plastic interlayer between two (or more) panes of glass. It's much harder to break through and won't shatter like normal glass. Instead it 'spiderwebs' from the centre because the interlayer holds it all in place.





## GLASS

### TINTED GLASS

The sun brings light and warmth into a building, but it can also fade furnishings, carpets and cause issues with electronic devices in office spaces. Tinted glass decreases the amount of UV, visible light and heat that passes through your windows.

Tinted glass is made by adding metal oxides during manufacturing, reducing glare from outside and decreasing the amount of solar heat that reaches through the glass.

#### TIP

- Grey tints have low light transmission, reduce solar heat and glare.
- Bronze tints reduce solar heat and glare and offer more visible light.
- Green tints offer better solar performance and superior light transmission.



### SOUND REDUCING

Whether it's from traffic or someone on the phone, noise can be stressful and irritating. Acoustic laminated glass (sound reducing glass) is an excellent solution for your project that is close to busy roads, or anywhere that noise might be an issue.

Acoustic laminated glass reverberates sound waves back to where they came from and also absorbs the noise energy within the glass. Insulated glass units can also improve sound absorption and reduce the noise coming into the building. Using thicker insulated glass or combining insulated and acoustic laminated glass will give you the best noise protection for your project.

#### TIP

*The type of glass you need will depend on the type of noise. Traffic noise requires a thicker single pane of glass, but acoustic laminates are better for other types of noise.*



# CARE AND MAINTENANCE.

## ■ WINDOWS & DOORS

Fairview products comply with all regulatory requirements and are tested in an international accredited laboratory, and comply with international accreditation NZS ISO IEC 17025:1999. 15 year powder coating warranty on colour integrity and film integrity for use in most residential environments (excludes commercial, high-rise and marine usage). In addition to these standards, there are some simple steps that you can take to ensure the longevity of your new doors and windows.

Post construction and installation it is essential that your joinery, hardware and glass be cleaned to make sure that building dust and debris is removed and to ensure that any drainage holes are not blocked. Cleaning should include the removal of any build up indoor tracks, to ensure that drainage paths remain clear. This cleaning should be repeated every three months, and more frequently in coastal or industrial environments.

We recommend cleaning with a soft brush and warm water containing a mild household detergent. Rinse with fresh water to remove any detergent residue.

Do not use abrasive steel wool, scourers, scrapers or aggressive solvents, as these may damage the finish.

## GLASS

Care must be taken when cleaning glass to avoid scratching or marking. Use only recommended glass cleaning products, and rinse with fresh water after their use.

We recommend washing the glass down with water before cleaning to loosen any dirt.

When cleaning double glazed units, make sure that solvents do not come into contact with the edge laminate or unit sealant.

Avoid cleaning the glass in direct sunlight.

