



Setting new standards for
insulation and environmental
performance

graphex.

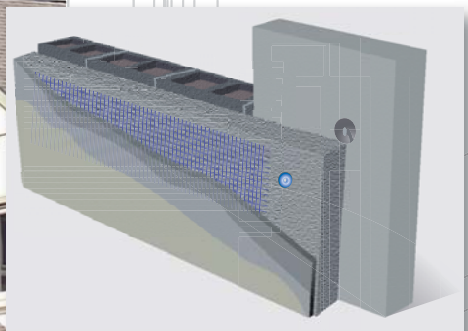


A healthy, comfortable home begins with Graphex

When you want a home that's healthy, stylish and comfortable, choose to build with Graphex. Graphex is a graphite-infused composite construction panel that has been specifically designed for super-insulating and cladding a home's exterior. Widely popular in Europe, the benefits of this leading-edge product can now be enjoyed in New Zealand homes.

The innovation lies in the product's combination of unique infrared absorbers and reflectors, which greatly reduce thermal conductivity. This means it provides insulation up to 20% higher than conventional construction panels. So with Graphex, you'll always have a healthy and comfortable indoor climate – cool in summer and warm in winter.

But smart insulation is not all that's on offer. In combination with modified renders, Graphex provides a look that is timeless and elegant. And with the absolute confidence of durability, you can be sure that your home will be comfortable and stylish for many years to come.



Great thermal insulation for healthier homes

A poorly insulated home is an unpleasant place to live. In these homes mould growth, structural damage, and drafts are common complaints. That's why good insulation is so important.

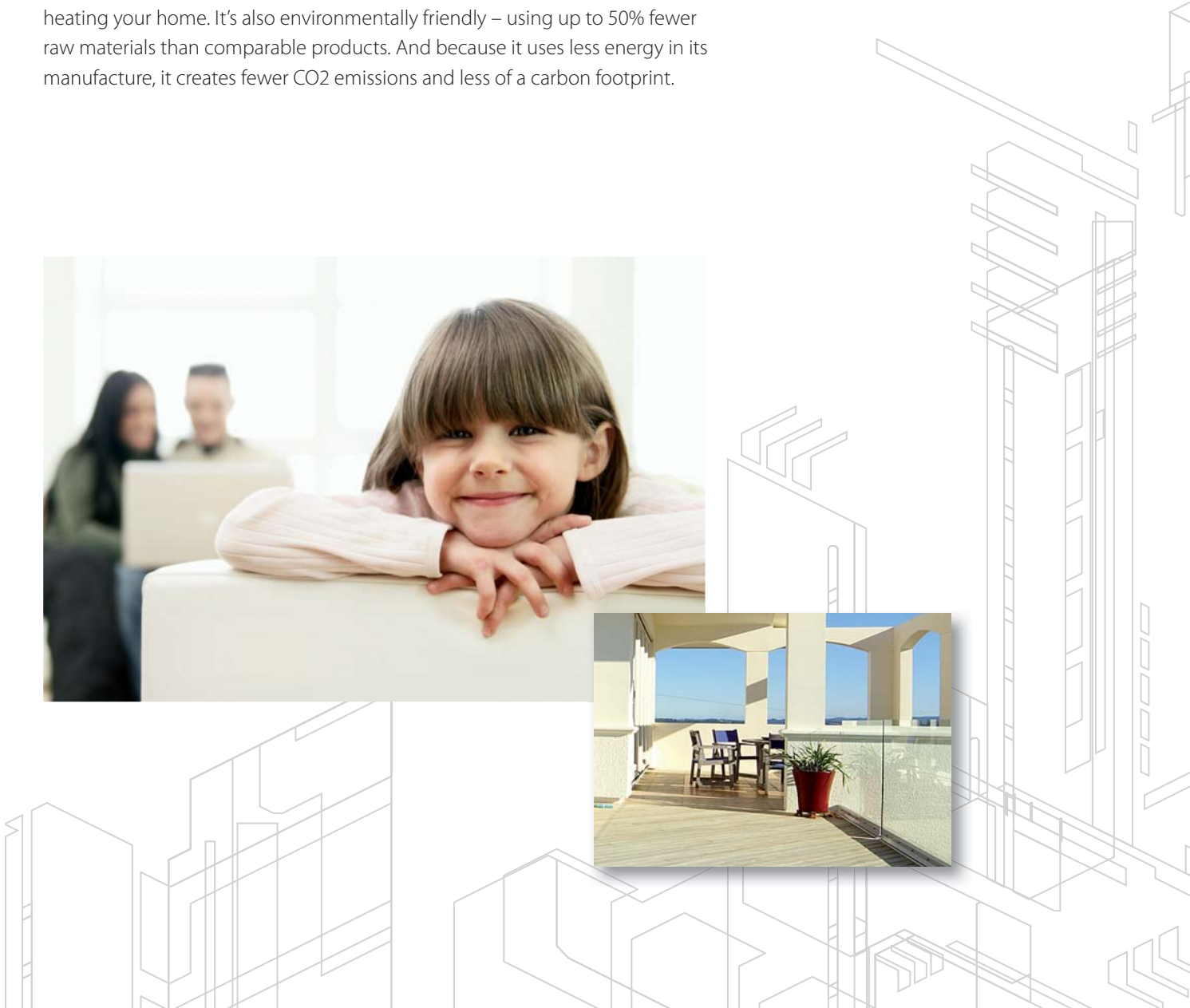
Graphex boasts up to 30% better R-value (insulation measure) than similar products on the market. The graphite particles, which are infrared absorbers and reflectors, help to lower the thermal conductivity and stop thermal losses through exterior walls. This eliminates wide temperature fluctuations.

When installed by a NUFED licensed contractor, Graphex eliminates worries about drafts, condensation and mould growth. So you can be sure that your home is healthy, dry and comfortable all year round.



Energy efficient and kind to the environment

With its superior insulating properties, Graphex helps to lower energy costs in heating your home. It's also environmentally friendly – using up to 50% fewer raw materials than comparable products. And because it uses less energy in its manufacture, it creates fewer CO2 emissions and less of a carbon footprint.



Strong, quiet and affordably stylish

Graphex is built for durability and strength. It boasts outstanding resistance against impact, so it will last the distance. And depending on the panel thickness, it can also improve the sound insulation coefficient by up to 4dB, so your home will be quieter.

When it comes to style, Graphex offers a range of options – from a classic look to the design of your choice. And best of all, this state-of-the-art, high-quality building solution is very affordable. So you get the benefits of great insulation and good looks at a competitive price.



graphex.

The security of a quality system

Graphex is a building solution you can rely on. You can be confident of its quality.

- The product is BRANZ appraised.
- Graphex has a proven performance in Europe.
- Graphex comes with a unique Customer Protection Warranty (when installed by NUFED licensed contractors), for peace of mind.
- Graphex is bought to you by Nuplex/PSL – a company you can trust. Manufactured under license, Nuplex/PSL are leading suppliers of construction materials for the New Zealand construction market.

By choosing and correctly installing Graphex, you'll ensure your home is well protected over time, and also help your home to retain its value.

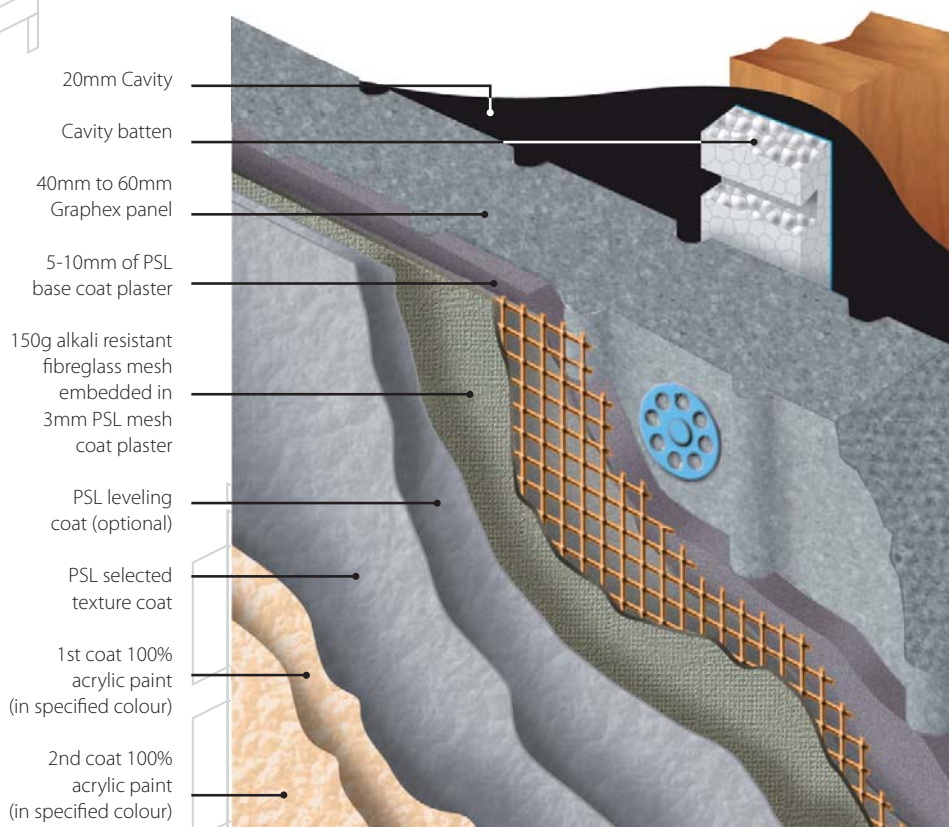


How do I get Graphex included in the construction of my home?

If you're building a new home, let your architect or builder know that you want to use Graphex in the specifications. That way, you know your home is certain to have high-quality insulation and cladding. To ensure Graphex is properly installed, and covered by the Customer Protection Warranty, make sure it's installed by a NUFED licensed contractor. Visit www.nufed.co.nz for more information.

If you have any questions about the product, or want more information please visit www.graphex.co.nz. We're here to help.

How the Graphex system works



graphex.

graphex.

www.graphex.co.nz



www.plastersystems.co.nz

121 Diana Drive, Wairau Valley, North Shore

Ph (09) 444 6440