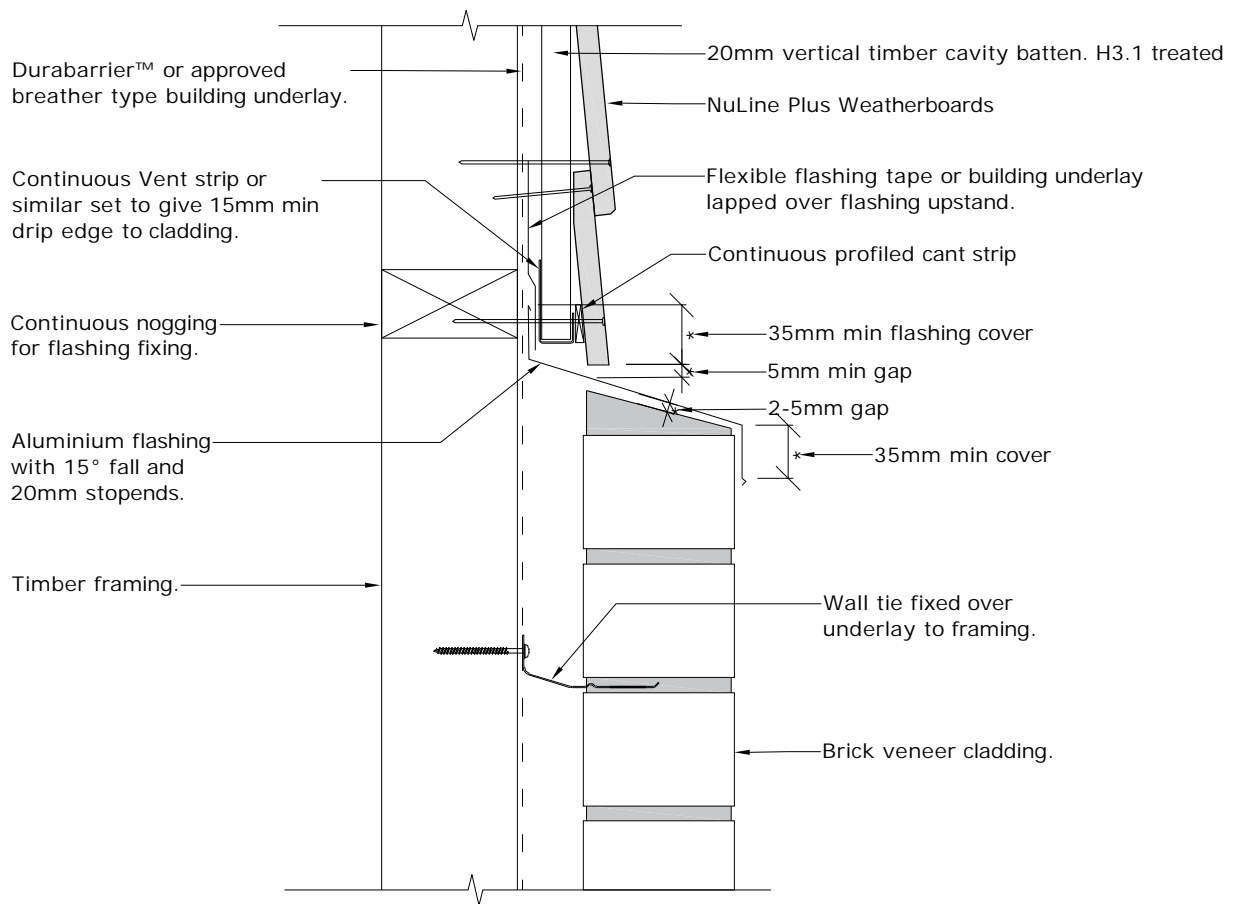




Fibre Cement

Cavity Batten Note:
Refer to cavity batten layout for batten sizes, types, spacing's & fixings.

Cladding fixing note:
Refer to cladding fixing layout for all fixing types & spacing's



PROFILE **BGC NuLine™ Plus Weatherboards**

DETAIL **Brick veneer (without sill) - NuLine™ Plus
Junction Detail - Cavity Construction**

DATE Oct 2019
SCALE 1:5 @ A4
DETAIL NO. **NU-31a**